

STURGEON'S OF PEMBURY

Specialists in all types
of Road and Drive
Construction

Coal Merchants
Haulage Contractors

Henwood Green, Pembury. Tel: Pembury 2221/2/3

PEMBURY

Your VILLAGE newsletter / 56
NO.
WINTER 1988

**NOT TO BE
TAKEN AWAY**

INTO 1989

*planning ahead
for the
New Year*

contents

Viewpoint	2
Pembury Under Pressure	3
The Year Ahead	4
Meet your Councillors	5
Pembury's heritage	5
Two young mothers launch business	6
Christmas Services	6
In Brief	9
Christmas Crossword	10
Keep children safe	11
Video recordings	11
Library's Big Day	12
Arthur Bromwich	13
Look Back	15
Your Clerk Reports	19
Tree planting plans	19
Crossword Solution	19
Your Local Councillors	21
Village Organisations	22
For Your Diary	23

VIEWPOINT



Christmas is the season of giving. It's the time when we can show our love to our families in gifts, and in gargantuan meals – gourmet or otherwise. It's a time of over-indulgence, when we all go a bit over the top.

Some people feel that Christmas has become too commercialised and it's certainly getting harder to maintain a freshness and spontaneity about the Yuletide season when the shops start displaying Christmas cards, calendars and gift wraps in early September. Perhaps we do spend too much on presents for our children – the mountains of parcels around the Christmas tree don't always bring the longed-for tranquillity on Christmas afternoon. And, anyway, little Johnny often ends up playing with the wrapping paper and silver ribbon rather than the contents.

Commercialised or not, we all spend a lot of money at Christmas, but it's not all on ourselves. More and more people make a point of buying charity greetings cards, because they like to make some contribution, however small, to help other folk less fortunate than themselves. Others order gifts from catalogues produced by various charities, or make direct donations. Christmas is a time when none of us like to think of other people suffering or in need, when we're all eating our heads off and lazing in front of the television.

It's strange, isn't it, that although we are no longer a church-going nation and perhaps the deep religious significance of the festival is lost for, or ignored by, many people, we still cling to an idealised view of what Christmas should be. Perhaps it's all due to Charles Dickens, and the description of Mr Pickwick's Yuletide jollifications at Dingley Dell, that we have been left in a sort of Victorian time-warp. How else can you account for the fact that so many Christmas cards feature stage coaches dashing across snowy landscapes carrying ladies in crinolines and muffs and gentlemen in top hats?

So, despite all the modern day fears and anxieties – terrorism and political tension, spy satellites, holes in the ozone layer and chemical pollution damaging the environment – for a few days at the end of 1988 let's stop the world and get off for a traditional Christmas holiday. Here's to you, Mr Dickens!

Editor

PEMBURY UNDER PRESSURE

"No more houses in Pembury" appears to be the view of most local residents. This came across loud and clear at the Pembury Society's annual meeting and is also reflected in recent discussions in the parish council.

Councillors are greatly concerned by the enormous increase in planning applications for demolishing houses with large gardens (and sometimes just average-sized gardens) and building three or four houses on the site. They are even more concerned about the applications from builders for large-scale developments – mainly housing for the elderly – on land between the village and the A21 by-pass which would infringe Green Belt policies.

Tunbridge Wells Borough Council will be producing its Village Plan for Pembury in early 1990 and the parish council wants developers to wait until this is published. But developers are driven by commercial considerations and are not prepared to wait.

One of the largest applications is for 134 houses on land between Cornford Lane and Woodgate Corner. Another is for 20 houses at the rear of 61 High Street. Both these applications infringe the Green Belt in whole or in part.

"The parish council has little control over what happens in the village within the Green Belt," says Dick Miles, parish council chairman. "But if the Green Belt is to be breached eventually we want some planning gain, in the form of amenities, to go along with whatever building takes place."

"We must have something in return, such as a community or leisure centre, if the Green Belt is breached. No more houses without amenities is my feeling."

Dick Miles points out that the

number of planning applications has escalated alarmingly over the last four or five years, whereas nine or ten years ago the council was receiving only about six applications for houses a year.

This point was also made by Mr Stan Brearley, Pembury Society's chairman, speaking at the society's annual general meeting.

"It is quite evident that various development companies are trying to pre-empt the Local Plan by flooding the village with a veritable tidal wave of applications," he commented.

Mr Brearley said that he had calculated that in the area between the Upper Church and Woodgate Corner current applications, if approved, would result in 247 new dwellings with no plans for extra shops or welfare or medical facilities.

"If you are happy to see Pembury become just an urban satellite of Tunbridge Wells, then sit back and do nothing," he told the meeting. "If on the other hand you feel it is time to call a halt to the rapid expansion of the village, then write to the Tunbridge Wells Borough Surveyor a letter of objection when you take exception to any particular planning application."

Mr Barry Eaton, the KCC's Strategic Planning Manager, who also addressed the society, confirmed the necessity to make sure that developers do not get around the Village Plan safeguards by pushing through massive building plans quickly.

"The Environment Minister says the Green Belt is sacred – let us make sure it stays that way," he said.

Pembury Society's membership is now about 420, but more members would be welcome to lend strength to the campaign to keep Pembury a village.

The Year Ahead . . .

The Parish Council works through its six committees, and these are now setting their targets for 1989. Here, some of the committee chairmen outline what they hope to see carried out in the year ahead.

Amenities Committee

"If the money is available in 1989 we want to upgrade certain playground equipment on the Recreation Ground and to improve facilities inside the Pavilion. We're also concerned about the lack of playing fields for football clubs, as some of our youth teams are having to play outside the village, and we are looking at various possible ways of solving this problem."

Arthur Storey
Chairman

Highways Committee

"We intend to continue to improve street lighting in the village. Unfortunately, many lights are obscured by overhanging trees or hedges, so I would ask for the co-operation of local residents concerned to help us by keeping their hedges cut well back so that our streets are sufficiently well lit and the paths kept clear."

Brian Chantler
Chairman

Burial and Allotments Committee

"We will continue to make good the damage caused by the hurricane by tidying and replanting in the burial grounds and around the allotments. There is still some tree surgery to be done, trees and hedges to be replanted and fences replaced, but by the end of 1989 there should be some attractive trees in these areas. We also hope that the elm in the old parish churchyard – felled by the storm winds – can be given a new lease of life. By taking the top out of the elm the experts tell us there is a good chance that the tree will upright itself."

Mary Shepherd
Chairman

Public Relations Committee

"Pembury Parish Council has always been aware of the need to keep local residents well informed about their community and in these days of rapid change that is even more important. Through this quarterly newsletter, which has now been going for 14 years, we hope to reach householders and to keep them in the picture in a readable and entertaining way. We are one of the few parishes which produce a regular publication like this and who have been able to sustain it for so long. The magazine is for the village, so if you have any views, comments or ideas you would like to contribute during the coming year, then please get in touch with the Editor."

John Hawker
Chairman

MEET YOUR COUNCILLORS



John Hawker,
Chairman Public Relations Committee

John Hawker with his wife Pauline and young family came to live in Pembury in 1977. His upbringing was in rural Somerset, in an area of apple orchards and cherry plums, not dissimilar from this locale. In fact, his connections with Kent farming go back to the early sixties.

Now that agriculture is in decline, he feels strongly that the rural environment is worth preserving and must be protected – not as a static, lifeless landscape but with new uses for decaying, redundant buildings, and light industry living in partnership with farming.

A founder member of the Hockey Club, John has a keen interest in sport. He enjoys occasional parts in Pembury Players' productions, but claims that for sheer escapism (and exhaustion) nothing beats tackling an allotment at Woodside. He counts himself extremely fortunate in having a talented wife who can turn even his meagre offerings into palatable vegetables.

Two sons have progressed through Pembury CP School to Skinners, and a third still attends Pembury.

John has been a member of the Parish Council since 1986 and is Chairman of the Public Relations Committee.

Pembury's heritage

A village's past heritage is reflected in the number of its old buildings which are kept intact. One way of preserving buildings of historic or architectural interest is by obtaining 'listed' status under the Department of the Environment's ancient monuments and historic buildings division.

Pembury has seven Grade II listed buildings. They are: Little Hawkwell, Maidstone Road; Knights Place, Lower Green Road; Coach House at Knights Place;

Almshouses, Hastings Road; The Camden Hotel on The Green; 38 Henwood Green Road and Poppingbury, Hastings Road.

There are also some 40 buildings which are currently listed as Grade III, including Downingbury Farmhouse; the Post Office and General Stores, Lower Green Road; the Black Horse Inn; and a number of houses in the High Street, Tonbridge Road and Romford Road.

Two young mothers launch their own business

Spotting a gap in the market can be the first step to business success, and identifying a local need is just what made two young Pembury mothers start their children's clothing venture, Humpty's.

Nina Sibley and Becky Stean realised that many women living in villages outside main shopping centres had problems buying clothes for their toddlers and pre-school age youngsters. Getting into town and trailing round the stores with small children is no picnic, even with a car; without a car and relying only on public transport the exercise can become a nightmare.

So, last May, Nina and Becky set about taking the clothes to the customers. They decided to work through playgroups, nursery schools, mother and toddler groups and even individuals prepared to organise clothing parties in their own homes. They drive with their stock to places within a radius of about 20 miles and now have regular customers as far afield as Bexley, Orpington, Maidstone, Larkfield, Sandhurst and Hawkhurst. The party organisers are paid ten per cent commission, usually in goods.

"This project is ideal for us and we love it," said Nina. "Although we go out every

day and are really working full time, we can arrange it all around our own family needs."

Nina has five-year-old twin girls and was formerly a secretary. She has lived in Pembury since 1981 but comes from Yorkshire. Becky was a physiotherapist working at Pembury Hospital and the Kent and Sussex Hospital before the birth of baby Emma, now 15 months old. Emma travels in the car with them on their business trips.

"We started Humpty's with just a few hundred pounds, but managed to get a Government enterprise allowance," Becky explained. "What we're particularly proud of is the good after-sales service we provide our customers."

Most of the clothing they sell is priced at under £10, and nothing is more expensive than £17. One of the items – a designer knitwear jumper – is their Number One best seller. The jumper, which has a Humpty Dumpty motif, is their own creation and is machine-knitted for them by a friend in Rotherfield, who now devotes her whole time to turning out this one design.

Enquiries about Humpty's children's clothes should be made to Nina Sibley on Pembury 3404.

ALLEN, STONER, STEELE & CO. Certified Accountants

- ★ Limited Company Audits
- ★ Taxation – Corporate & Personal
- ★ Accounts Preparation
- ★ Salaries & Wages Prepared
- ★ V.A.T. Returns & Advice
- ★ Book-keeping Services
- ★ Pension Plans Arranged
- ★ Financial Advice

★ We offer a free initial interview to discuss your affairs ★

**Beechcroft,
125 Ridgeway,
Pembury. Tel: 4810**

**Offices at:
Tonbridge
Sheerness**



CHRISTMAS CHURCH SERVICES

St. Peter's Church

Carols by Candlelight – 6.30 p.m.

18 December

Crib Service – 3.00 p.m. 24 December

Midnight Communion – 11.30 p.m.

24 December

Catholic Church

Services in the Catholic Church Hall,
Pembury are:

Christmas Eve – Carols at 7.30 p.m.

Mass at 8.30 p.m.

Christmas Day – Mass at 10.30 a.m.

Carols at 11.30 p.m., followed by midnight
Mass, will be held on Christmas Eve at
Paddock Wood Catholic Church.

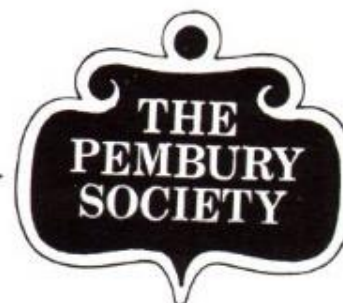
Pembury Free Church

Carols by Candlelight – 6.30 p.m.

18 December

Family Christmas Service – 10.00 a.m.

25 December



SUPPORT YOUR AMENITY WATCHDOG
AND HELP PRESERVE THE VILLAGE

Join

THE PEMBURY SOCIETY

Phone

Membership Secretary: MRS. B. MAY (Tel: 2548)
Chairman: MR. S. BREARLEY (Tel: 2942)

S & B AUTOS

ACCIDENT REPAIR SPECIALISTS



CAMDEN SERVICE STATION PEMBURY
24-Hour Recovery Service



RE-SPRAYING CHASSIS JIG ALIGNMENT
LOW BAKE OVEN FOR FACTORY FINISH

*Come to the people who care
Friendly advice — Courteous Service
Fully Experienced Engineers*

P. J. & J. M. Ditchett

CHEMIST

Medicines
Baby Products
Kodak Films
Developing & Printing

Cosmetics
Fancy Goods
Gift Sets
Toiletries

5, HIGH STREET, Pembury, ☎ 2896

IN BRIEF

The Chairman of the Parish Council, Dick Miles, would like to thank everyone who contributed to his Tree Fund Appeal. Donations totalled £150. A further £200 has also been collected by a local resident.

★ ★ ★

There are still some areas in the village where street lights are not functioning properly. If anyone notices a street light that is not lit, or is lit at irregular times, would they please report it to the Parish Clerk, Henry Plant, on 3459, giving the exact location of the light.

★ ★ ★

The Parish Council's Amenities Committee has decided that no money should be allocated to renewing seats on parish land, such as the Recreation Ground or The Green. However, it was felt that some local residents might like to donate a memorial seat to a loved one. If anyone is interested in this idea, and would like to discuss a possible site, the person to contact is the Parish Clerk.

★ ★ ★

As last year's carol singing was so much enjoyed it has been decided to repeat the experience. All will be welcome to join in the singing and to partake of mince pies and coffee on 23 December at 7.30 in the Village Hall. Come and add your voice to ours.

The Parish Council has earmarked the sum of £2000 for the renewal of curtains in the Village Hall, priority being given to the stage curtains. The Village Hall Management Committee are making a £4500 contribution towards the cost of painting the outside of the hall.

★ ★ ★

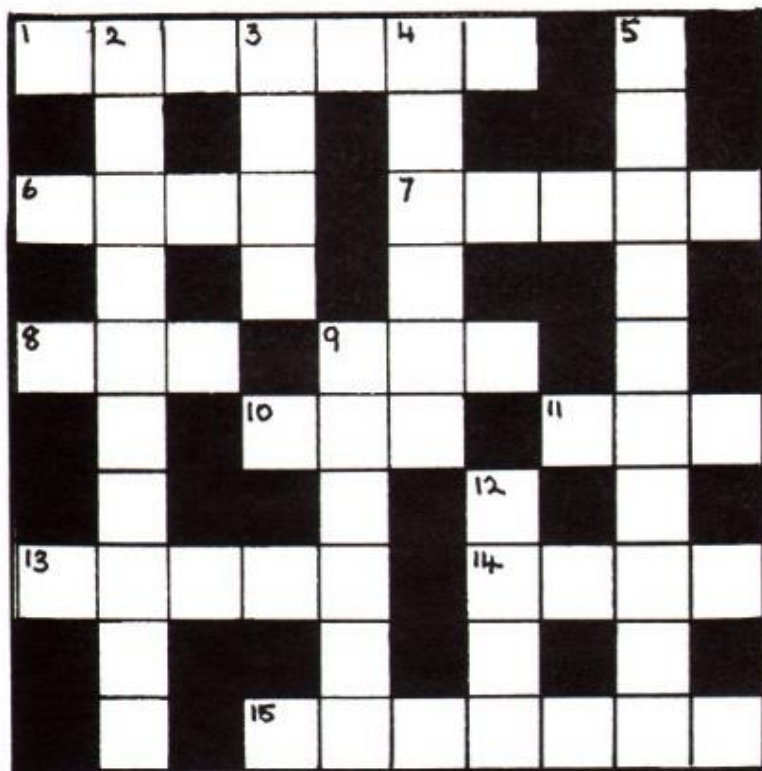
Lower Green Road has been designated a Neighbourhood Watch Area, bringing the total number in Pembury to seven. The other areas are: Amberleaze Drive, Gimble Way, The Forstal, Ridgeway, Woodhill Park and Hastings Road.

★ ★ ★

With the departure of Arthur Bromwich, the management of Woodside Youth Club has had to be reviewed. The Parish Council has agreed to set up a Youth Club Management Committee with nine members – four parish councillors and five others, of which three are adults and two are youngsters from the club. Any voluntary help would be welcome, also any contributions of equipment for indoor sports and activities.

CHRISTMAS CROSSWORD

Put your feet up and try our easy Christmas Crossword. If you haven't imbibed too freely of festive beverages you should be able to finish it in five minutes flat! The answers to some of the clues refer to Pembury village – all clever stuff. The solution is on page 19, but sorry, no prizes!



ACROSS

1. Our village. (7)
6. Remember them at Christmas. (4)
7. An old one can cause trouble! (5)
8. Productive bird. (3)
9. Found in the ointment sometimes. (3)
10. Cheery Spanish expression. (3)
11. "I'm a---, how do you do?" (3)
13. Raise your glass for this. (5)
14. Angelic instrument. (4)
15. They're famous for take-aways. (7)

DOWN

2. When beheaded beasts fly to the trees, they almost make a road. (6,4)
3. He was venerable. (4)
4. A good way to raise funds. (6)
5. His Lordship's local? (6,4)
9. A side of bacon. (6)
12. Two of this means good health. (4)

KEEP CHILDREN SAFE ON THE ROADS

Over 1,800 pedestrians are killed on the roads in Britain every year. The casualty rate for children aged between five and 14 is double the average for all pedestrians.

These are some of the stark facts behind the Government's latest road safety Pedestrian Campaign which is being backed by Kent County Council's Road Safety Section.

Last year in Kent alone three children were killed and 968 were injured on the County's roads. Winter months, with shorter hours of daylight, are a particularly hazardous time. To help keep children in the County safer KCC's Road Safety Section are advising people to follow some simple points:

- * Teach children always to stop at the kerb. Remind them to do this until it becomes second nature.
- * Don't let children play near the road. Children get so involved in their games they forget about the traffic and the dangers associated with it.
- * Make children aware of the difficulties of crossing a road without the help of an adult. Remember, a child under 11 years of age cannot judge the height, distance or speed of traffic.

- * Talk to children about road user behaviour.
- * Children learn through repetition and example and so they should always see parents, or accompanying adults, crossing roads correctly.
- * Drivers should always be on their guard against children running into the road.
- * Drivers should drive with more regard for the safety of pedestrians.

Video recordings

The Video Recordings Act has required classification and labelling of video recordings since 1985, but it was only from last September that all titles required classification. Such labelling will make it easy to see at a glance what videos are suitable for viewing in the home and by which age group.

Video recordings must be certified by the British Board of Film Classification. They also have to be labelled with a symbol and explanatory statement of the category. Parents planning home entertainment during the Christmas holidays should be aware of these categories, which are:

U Universal – suitable for all.

Uc Universal – particularly suitable for children.

PG Parental Guidance – general viewing, but some scenes may be unsuitable for young children.

15 – suitable only for those aged 15 or over.

18 – suitable only for people aged 18 or over.

LIBRARY'S BIG DAY



Pembury Library's tenth birthday celebrations on 24 September proved a very popular and successful event. Joining in the fun and getting things off to an official start were County Librarian Mr Dean Harrison and Mrs Avril Ledward, chairman of the County Libraries Committee.

A highlight of the afternoon for the children was the fire engine, loaned by the Fire Brigade and brought into the car park for them to explore. "Fungus the Bogeyman" – well-known character from children's books – was another welcome

"Dare we get in?" These two little girls hesitate before climbing up onto the Fire Brigade engine at Pembury Library's tenth birthday party.

visitor when he came to present prizes.

The photographic competition attracted entries of a very high standard. The winner of the adult section was Ken Griffiths, with a sparkling seaside action shot of children playing in the surf, while 13-year-old Hamish Macpherson won the junior section with his view of Glen Afric.

The Unknown Pembury competition – a series of photographs of



No qualms for these young lads. They were aboard the fire engine and enjoying themselves before you could say "999".

some of Pembury's hidden corners which had to be identified – was won by Mrs Elizabeth Taylor, the junior winner being Anna Wigley, 13. In the birthday card design competition the adult winner was Mrs Thelma Gage, and the junior winner was 8-year-old Katherine Richards.

Various exhibitions were also staged by local groups and the W.I. provided teas.

Spot the Dog

Pembury Library's winter activities for the under-8s include a visit from Spot the Dog on Wednesday 4 January between 10.30 and 11.30 a.m.

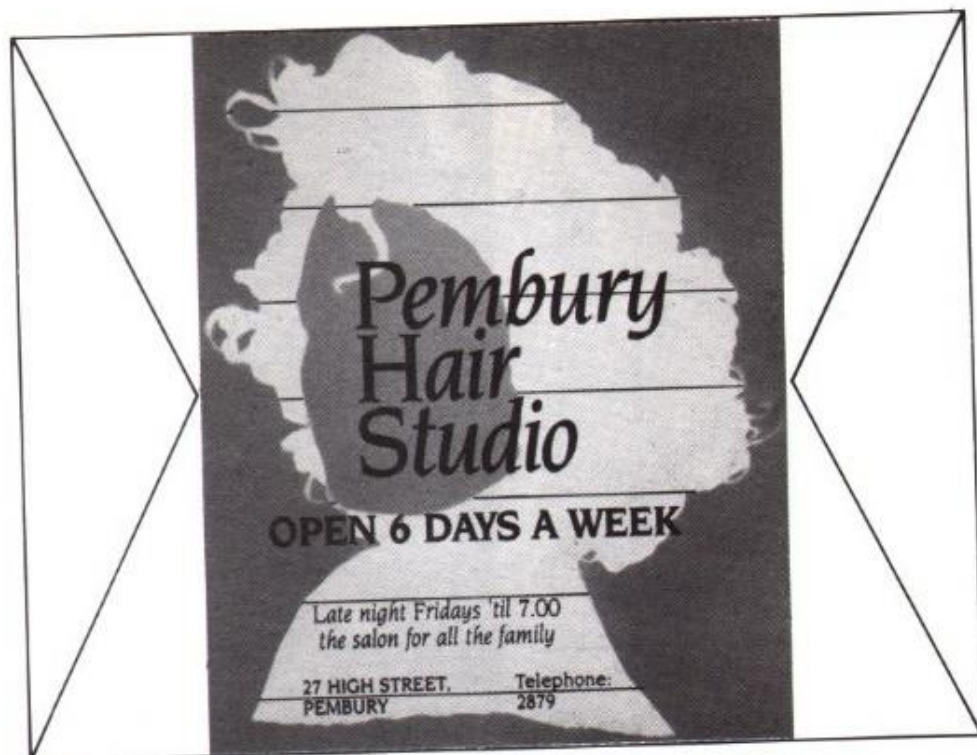


"Fungus the Bogeyman" presented prizes at Pembury Library's birthday celebrations – and nobody looked scared.

Arthur Bromwich leaves Pembury

Arthur Bromwich, who for many years played a prominent part in Pembury community life, has now moved away from the village. His wife died recently and he has gone to Pewsey, in Berkshire, to be near his son.

Mr Bromwich was on the Parish Council for four years before becoming the Borough Councillor for this area from May 1982 to May 1986. He was also the driving force behind the Woodside Youth Club, which he helped to set up.



PEMBURY PARISH COUNCIL

VACANCIES FOR PARISH COUNCILLORS

There are to be vacancies on the Parish Council in the New Year.

Do you think that you can make a contribution to the community?

Would you like to join the Team who are trying to improve life in our Village?

If so, please contact the Clerk to the Council on Pembury 3459 who will be pleased to give you details of the closing date for applications.

LOOK BACK

A Christmas remembered

Before the First World War family entertainment was simpler: people made their own music, they gathered round an upright piano and sang, they read aloud or played charades. But even in those days there were exciting hints of things to come, as is recalled in this nostalgic story of a childhood treat at Christmas. It is one of many personal recollections of Pembury's past given by **E. J. Standen** in his book "Just One Village".

"The first Christmas that I still remember, my grandparents, aunts and uncles, as many as could be packed in, came to tea. My mother had had a job to persuade my sisters and me to try and sleep in the afternoon because there was to be a special treat after tea. Our house had been selected for this party because we had a larger room than any of the others. To make more room, even the table was moved out after the meal, and shortly afterwards the clip clop of a pony's trot was heard on the stable yard. Some went outside and others crowded to the window. My father was the first one back carrying a small cast iron case with a wooden cover like a sewing machine. This he placed on the floor in the middle of the room. The next one brought a brass horn, almost as tall as himself, the third, a fairly high metal stand with a spring and chain hanging from the top, followed by a

large wooden case, which was being handled with great care. My uncle's friend had arrived with his phonograph. One or two present had seen one before but most of them had not.

"The iron box housed the clock-work motor which in turn, by means of a belt turned a covered roller, on to which the records were slid, these being cylindrical in shape. That is why such a big box was wanted to keep them in.

"This particular machine had an extra big horn and that is why it had to stand on the floor, so that it hung freely on the spring and chain, for it was fixed direct on to the sound box, which had to move as the ruby followed along the groove on the record. But what a wonderful thing, bands and singing, and then wonder of wonders, the sound box was taken off and an attachment was put on with a blank record. Two uncles with violins and an aunt with a mandoline tuned up for the owner of the machine to sing 'The Mistletoe Bough'. They got as close as they could to the end of the horn to make the recording, which was afterwards played back to us.

"I expect that the whole programme which we heard that night could be heard now on one 'long play' and we should think it an awful reproduction, but how wonderful we thought it then."

PENN OF PEMBURY



BUILDERS & CONTRACTORS

Domestic & Commercial
Extensions Conversions Alterations
Repairs & Maintenance

13, High Street, Pembury · Tel 2615

M.J.P. AUTOS

M.J.P. AUTOS

SERVICING SPECIALISTS

INCLUDING:

- MOT WORK ● REPAIRS
- RESPRAYS ● ACCIDENT DAMAGE

FREE COLLECTION & DELIVERY SERVICE



24 HR RECOVERY

SUN SPECIALIST ENGINE TUNER
LATEST SPECIFICATION MEA 1500



WADHURST 3306
HAWKHURST 3103/3416

Highway Depot Yard, Faircrough Lane, Wadhurst, E. Sussex

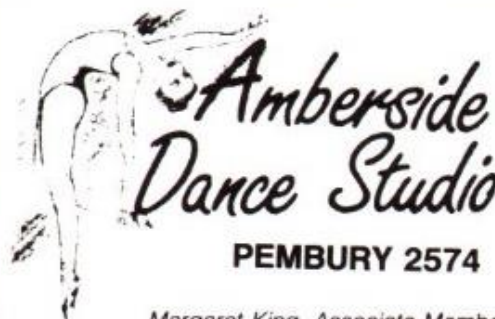
PICK
—
YOUR
—
OWN
&
READY
PICKED
FRUIT



Maidstone Rd, Pembury
Pembury 4569

STRAWBERRIES & RASPBERRIES
LOGANBERRIES & TAYBERRIES
GOOSEBERRIES & REDCURRANTS
BLACKCURRANTS & BLACKBERRIES
PLUMS & CHERRIES
APPLES & PEARS

Also PIPPINS VINTAGE KENT CIDER
June-October: See local press for details



PEMBURY 2574

Margaret King, Associate Member
of the Imperial Society of Teachers of Dancing for
Ballet, Modern Theatre and Tap.

ALL GRADES & ISTD EXAMINATIONS
Special Pre-school Classes

BODYFOCUS for Adults
A carefully devised programme of
exercise and jazz dance
WEDNESDAY EVENINGS
AND
TUESDAY MORNINGS
(creche for toddlers)



Home Improvements — Extensions — Free Estimates

ALAN CLARKE

BUILDERS & DECORATORS

Tel. Pembury 3932

DERWENT LODGE SCHOOL

1 LANSDOWNE ROAD TUNBRIDGE WELLS

Day Preparatory School for girls to 11+ and boys to 7+

Nursery Class for children aged 3-4 years

Parents with daughters aged 7+ to 10+ may be interested in our excellent record of success in preparing girls for the Common Entrance Examination

Girls may also take part in Kent's selection procedure if their parents wish

Phone for prospectus and further details.

Tunbridge Wells 25839

Your Clerk Reports

I would like to thank the many parishioners who took the trouble to telephone me in response to my Report in the summer issue regarding defective parish lighting. I am passing this information on to the Electricity Board who will use their best endeavours to rectify the defects as soon as possible. Please continue to ring me if you have any problems with our street lighting and I will do my best to help.

There are also two other areas where I would ask for your co-operation. Firstly, in relation to the many properties that abut a public footpath that have overgrown hedges, it would help to reduce inconvenience to many local residents if these hedges could be trimmed back as they do cause such a nuisance and in some instances can be very dangerous, especially at night. Secondly, is in relation to trees overhanging some roads in Pembury whose foliage obscures the street light bulb to such an extent that hardly any light is shown on the footway.

I know that the cutting back of trees can be very difficult, but if this applies to your property your help in this respect would be very much appreciated. If there are any real problems perhaps you could let me know and I can see what assistance the Borough or County Council can give.

As mentioned elsewhere in this Newsletter, there is likely to be one or two vacancies for Parish Councillors in the New Year; if you are interested or would like to know more about the role of a Parish Councillor in the community, why not give me a ring.

I would like to end my Report by taking this annual opportunity on behalf of myself, the Chairman and all members of Pembury Parish Council to wish you
**A VERY MERRY CHRISTMAS and a
HAPPY NEW YEAR.**

Henry Plant
Clerk to the Council

Tree planting plans

Pembury has applied for a grant from the Replant the Garden of England Trust Fund and has submitted its tree planting plans for approval. Only native broad-leaved trees qualify for grants.

After site meetings it was agreed that the following trees should be planted.

St. Peter's Upper Church Burial Ground: two oaks, one hawthorn and one hornbeam.

The Recreation Ground: one hawthorn, one whitebeam and two birches.

St. Peter's Parish Church: one lime, two beeches and one alder.

Lower Green Burial Ground: two black poplars, one ash, one Scots pine and one yew.

Three flowering cherry trees will also be planted in the Upper Burial Ground, but these do not qualify for grant aid.



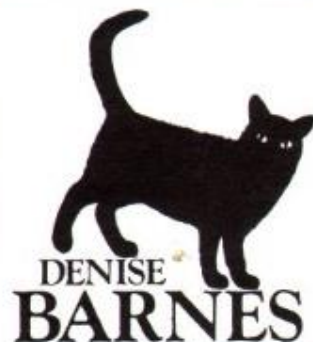
CROSSWORD SOLUTION

Across

1. Pembury. 6. Aged. 7. Flame. 8. Hen. 9. Fly. 10. Olé. 11. Gnu. 13. Toast. 14. Harp. 15. Chinese.

Down

2. Eagleswood. 3. Bede. 4. Raffle. 5. Camden Arms. 9. Flitch. 12. Chin.



ESTATE AGENTS

VALUERS

SURVEYORS

16 High Street, Pembury, Kent Tel: Pembury (089282) 2880

Your **INDEPENDENT** Estate Agency
for personal, experienced and friendly service.
FREE VALUATIONS – 1¼% Commission rates.

Also at
16 HIGH STREET, PEMBURY
PEMBURY MORTGAGE & INSURANCE SERVICES
IMMEDIATE FREE QUOTATIONS

Tel: Paul Low – Pembury (089282) 5477
Mortgage Consultants to Denise Barnes Estate Agents



25 High Street Pembury Telephone 3878

Karen Errett BSc MBOC Ophthalmic Optician

- ☐ Friendly, professional service.
- ☐ Late night and Saturday morning testing now available.
- ☐ Contact lens fitting, solutions & accessories.
- ☐ Over 300 frames on display.
- ☐ Glaucoma screening available.

OPENING TIMES Monday, Tuesday and Friday 9.00am-5.00pm
Thursday 9.00am-8.00pm Saturday 9.00am-1.00pm
(Closed for lunch 1.00pm-1.40pm and all day Wednesday)

Burtons Pembury's Solicitors

Penn House
13a High Street
Pembury

Car park in Penns Builders yard
just behind our offices

Tel Pembury 4577



Pembury Secretaries

shorthand & audio typing
duplicating

photocopying
copy typing

Jackie Prance		4489
Eileen Cordell		3156
Pauline Hawker		4327
Maureen Redmond		2224

PEMBURY

PEMBURY is published four times a year by Pembury Parish Council. The Editor would welcome any contributions for inclusion in the Newsletter. Design and layout by DHR Photographic Ltd; printed by Orchard Printing Services, East Peckham. The views expressed in the Newsletter do not necessarily represent official Parish Council opinion or policy.

EDITOR
Elizabeth Repath

CLERK TO THE COUNCIL
Henry S. J. Plant
16 The Coppice, Pembury 3459

YOUR REPRESENTATIVES

County Council	Derek Hawes Richards, Hop Press Oast, Mascalls Court Road, Paddock Wood. Tel: PW (983) 4692
Borough Council	Bob Brown, 11 Beagles Wood Road. Tel: P 3067 Mrs Hazel Hawes Richards, Hop Press Oast, Mascalls Court Road, Paddock Wood. Tel: PW (983) 4692 Mrs Hildy Swinden, 6 Church Road. Tel: P 3378
Parish Council	Mr Richard Miles (Chairman), Fletchers Farm, Hastings Road. Tel: P 2378 Mr David Coleman (Vice Chairman), 22 The Ridgeway. Tel: P 3402 Mr Hugh Boorman (Chairman Planning), 52 Henwood Green Road. Tel: P 3068 Mr Brian Chantler (Chairman Highways), 4 Stanam Road. Tel: P 3339 Mrs Margaret Gannaway, 31 The Paddock. Tel: P 2513 Mr Derek Goodwin, 27 Greenleas. Tel: P 3822 Mr John Hawker (Chairman Public Relations), 1 The Rowans, Heskett Park. Tel: P 4327 Mr David Hayward, 55 Batchelors. Tel: P 4444 Mr Kit Kelly, 22 Hastings Road Mrs Mary Shepherd (Chairman Burial & Allotments), 37-39 High Street. Tel: P 2329 Mrs Betty Roberts, 16 Woodhill Park. Tel: P 4914 Mr Arthur Storey (Chairman Amenities), 13 Henwood Green Road. Tel: P 2509 Mr Bob Wilkes (Chairman Environment), 6 Bellfield Road. Tel: P 3264

KENT RADIATOR SERVICES

UNIT 3, COLEBROOK INDUSTRIAL ESTATE
LONGFIELD ROAD, TUNBRIDGE WELLS

*Specialists in Car and Commercial
Radiators and Heaters (fitting available)
Same Day Service on Repairs and Exchanges
Choke. Conversion Kits also stocked*

Phone: Tunbridge Wells **511437** After Hours: Pembury **2197**

VILLAGE ORGANIZATIONS

AGE CONCERN

Mrs. M. Harris, Tel: T.W. 22591
ASSOCIATION OF PEMBURY FOOTBALL CLUBS
J. Smith, 18 Westway, Tel: 3714

BOWLS CLUB

Secretary: D. J. Duquemin, 1 The Forstal, Tel: 2628
1st BROWNIES GUIDER

Mrs. Harden, 55 Ridgeway, Tel: 2665

3rd BROWNIES GUIDER

Mrs. Boorman, 65 Heskett Park, Tel: 2355

CAMDEN GREEN BADMINTON CLUB

R. Holt, 50 Ridgeway, Tel: 3830

CATHOLIC CHURCH

Father Buckley, The Presbytery, 11 Alliance Way,
Paddock Wood, Tel: P.W. 3699

CONSERVATIVE PARTY

Sarah Rowe, 84 London Road, Tunbridge Wells

CRICKET CLUB

P. Chandler, 149 Sherwood Road, Tunbridge Wells.
Tel: Tunbridge Wells 33886

CUBS

J. Wiltshire, 4 Henwoods Mount, Tel: 4574

DARBY & JOAN CLUB

Mrs. B. Greatrex, 52 High Street, Tel: 2669

FRIENDS OF PEMBURY HOSPITAL

c/o Pembury Hospital, Tel: 3535

FRIENDS OF PEMBURY PARISH CHURCH

Treasurer: D. J. Ould, 42 Lower Green Road,
Tel: 2616

GUIDE GUIDERS

1st Pembury Company: Mrs. A. Baker, 67 High St.
Tel: 4441

3rd Pembury Company: Mrs. J. Usherwood,
1 Ridgeway, Tel: 2235

HOCKEY CLUB

James Whitehorn, Tel: 4854

HORTICULTURAL SOCIETY

M. Mephram, 16 The Paddock, Tel: 2703

JUNIOR FOOTBALL CLUB

L. Frowde, Hawkwell House, Maidstone Road,
Tel: 2826

KENT COLLEGE

Headmaster: Rev. J. Barrett, Tel: 2006

KENTISH VALE ROUND TABLE

J. Barsley, Briar Cottage, Poplars Farm, Churn Lane,
Horsmonden, Tel: Brenchley

KENTISH VALE LADIES' CIRCLE

Mrs. Wendy Kingcome, 11 Fellows Way,
Hildenborough, Tel: H'boro 833403

KING WILLIAM IV FOOTBALL CLUB

Kevin Barden, 24 Beagles Wood Road, Tel: 4708

LABOUR PARTY

S. Fowler, 71a St. John's Road, Tunbridge Wells.

Tel: Tunbridge Wells 20250

LADIES' NETBALL CLUB

Mrs. M. Walker, 65 Belfield Road, Tel: 3439

LARKFIELD HALL

Principal: J. H. Mason, Cornford Lane, Tel: 2168

LAWN TENNIS CLUB

Mrs. S. Smith, 2 Ridgeway, Tel: 2405

LIBERAL PARTY

Bob Brown, 11 Beagles Wood Road, Tel: 3067

MUMS AND TINY TOTS CLUB

Mrs. J. Pipe, 17 Batchelors, Tel: 4783 and

Mrs. R. Biela, 6 Beagles Wood Road.

OUTGROWN CHILDREN'S WEAR

Mrs. E. Westbook, 6 Carlton Road, Tunbridge Wells.
Tel: Tunbridge Wells 35794

PEMBURY BUSINESS ASSOCIATION

T. P. Burton, 13a High Street, Tel: 4577

PEMBURY FOOTBALL CLUB

L. Frowde, Hawkwell House, Maidstone Road.
Tel: 2826

PEMBURY FOOTPATH WALKERS

N. & K. Franklin, 11 The Meadow, Tel: 3212

PEMBURY FREE CHURCH

Rev. G. Pimental, 56 Lower Green Road, Tel: 4917

PEMBURY FREE CHURCH PLAYGROUP

Mrs. Wendy Parrett, Paddock Wood, Tel: 6945

PEMBURY FRIENDS OF SEVEN SPRINGS

Mrs. Durant, 39 Lower Green Road, Tel: 2196

PEMBURY LADIES' SOCIAL GROUP

Mrs. C. Segens, Tel: 3846

PEMBURY PARISH CHURCH

Rev. Annette Cooper, Tel: 2715

PEMBURY PLAYERS

P. Wells, 120 Beagles Wood Road, Tel: 3397

PEMBURY PLAY GROUP

Mrs. J. Yorke, 34 Greenleas, Tel: 2641

PEMBURY PRIMARY SCHOOL

Headmaster: Mr. R. Nisbet, Lower Green Road,
Tel: 2259

PEMBURY SEQUENCE DANCE CLUB

Mrs. Hasted, The Glade, Cryals Road, Matfield.
Tel: Brenchley 3531

PEMBURY SHORT MAT BOWLING CLUB

Mr. E. Ruddell, Chiringa, Pembury Grange
Tel: 4498

PEMBURY SOCIETY

S. Brearley, 17 Greenleas, Tel: 2942

PEMBURY WOODSIDE YOUTH CLUB

Mrs. P. Hawker, 1 The Rowans, Heskett Park.
Tel: 4327

Warden: Mrs. L. Weller, Tel: T. Wells 33157

PRIMARY SCHOOL PARENT-TEACHER ASSOCIATION

Mrs. R. Burton, Secretary, Tel: 4491

ROYAL BRITISH LEGION

J. Young, 13 Bulls Place.

ROYAL NATIONAL LIFEBOAT INSTITUTION

W. H. Dee, 1a Woodhill Park, Tel: 3131

SCOUT GROUP

J. Wiltshire, 4 Henwoods Mount, Tel: 4574

SCOUT & GUIDE BUILDING FUND

Tony Berry, 85 Hastings Road, Tel: 2517

TABLE TENNIS CLUB

M. Nash, 8 The Coppice, Tel: 3225

TINY TOTS PLAY GROUP

Mrs. J. Cook, 38 Lower Green Road, Tel: 3118

VENTURE SCOUTS

Jim Wiltshire, 4 Henwoods Mount, Tel: 4574

VILLAGE HALL

Manager (bookings): Mr. J. Goodsell, 61 Belfield Road.
Tel: 2342

WOMEN'S INSTITUTES

Afternoon: Mrs. B. Greenwood, Pixie Cottage,
Romford Road, Tel: 2533

Evening: Mrs. V. Ballantine, 6 Maidstone Road.

Tel: 2156

W.R.V.S.

Mrs. H. Swinden, 6 Church Road, Tel: 3378

FOR YOUR DIARY

- JAN**
- 5 Afternoon W.I. Talk by Mr P. Speaight, 2.15 p.m. Village Hall.
 - 6 Evening W.I. "Women Aware", talk by Tunbridge Wells Police, 7.45 p.m. Village Hall.
 - 7 Pembury Footpath Walkers, walk starting from Bo-Peep Corner, 2.15 p.m.
 - 9 Parish Council Meeting, 8 p.m. Village Hall.
 - 10 Darby & Joan Club, Village Hall 2-4.30 p.m.
 - 24 Darby & Joan Club, Village Hall 2-4.30 p.m.
 - 30 Parish Council Meeting, 8 p.m. Village Hall.
- FEB**
- 2 Afternoon W.I. Talk by Miss Mary Standen, 2.15 p.m. Village Hall
 - 3 Evening W.I. Antiques Roadshow, 7.45 p.m. Village Hall
 - 4 Pembury Footpath Walkers - Walk starting from Stonecourt Lane 2.15 p.m.
 - 7 Darby & Joan Club, Village Hall 2-4.30 p.m.
 - 20 Parish Council Meeting, Village Hall 8 p.m.
 - 21 Darby & Joan Club, Village Hall 2-4.30 p.m.
 - 23 Horticultural Society AGM, 7.45 p.m. Village Hall
- MAR**
- 2 Afternoon W.I. "Reflexology" by Mrs Mary Bennett, 2.15 p.m. Village Hall
 - 3 Evening W.I. Enamelling demonstration, 7.45 p.m. Village Hall.
 - 4 Pembury Footpath Walkers - Walk starting from Camden Hotel car park, 2.15 p.m.
 - 7 Darby and Joan Club, Village Hall 2-4.30 p.m.
 - 13 Parish Council Meeting, Village Hall 8 p.m.
 - 13 Horticultural Society, Floral Art Group, Village Hall 8 p.m.
 - 21 Darby & Joan Club, Village Hall 2-4.30 p.m.
 - 29 ANNUAL PARISH MEETING, 8 p.m. Village Hall.
 - 30 Horticultural Society: Pan Britanica Quiz, 8 p.m. Village Hall.

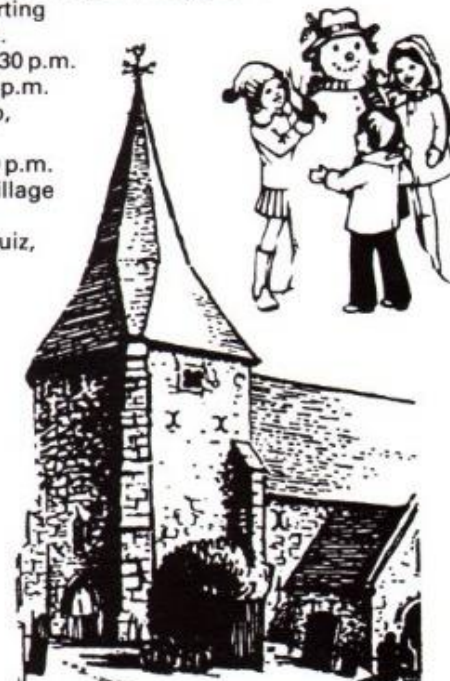
ST. PETER'S CHURCH SERVICES

Upper Church

- 8.00 a.m. Holy Communion
- 9.45 a.m. Parish Communion and Junior Church
- 6.30 p.m. Evensong
- 10.00 a.m. Holy Communion (Wednesdays)

Parish Church

- 11.30 a.m. Matins (except first Sunday, Holy Communion)



Every Friday - Pembury Village Market - V. Hall 9.45-11.15 a.m.

Every Monday - Pembury Sequence Dance Club - Catholic Hall 7.45-10.15 p.m.