

PEMBURY VILLAGE NEWS

ISSUE 167
Autumn 2016



PRIDE IN PEMBURY 2016

CONTENTS

Chair's Report	3	Hospice in the Weald 10K Run	24
Kent Fire & Rescue Service	4	Pippins Apple Day	26
District Cub Camp	6	The Pembury Society	28
Brownie Photo Challenge	7	Pembury Gardeners 'Summer Show'	28
Coffee Shop	7	Alzheimer's Society	30
Pembury People	10	Citizens Advice Bureau	30
Pembury People Continued	10	Civic Amenity Vehicle Collections	31
Pembury Fireworks	10	Remembrance Day Service	30
2nd Pembury Rainbows	13	Recipes	32
The Hospice Shop	15	Paying Too Much for Gas & Electricity?	34
Royal British Legion Poppy Appeal 2016	16	Crime Figures	36
Hospice in the Weald Harvest Harmonies	19	Crime Report	37
Pembury Picnic on the Green 2016	20	Useful Contact Numbers	37
The Iridescent Starling	21	Your Reps	38
Pembury U3A	23	Village Organisations	39

Front Cover: Selection of Pride in Pembury Winners' Gardens

PEMBURY VILLAGE NEWS

C/O Parish Council Office, Lower Green Recreation Ground,
Lower Green Road, Pembury, TN2 4DZ.

Distribution enquiries: Parish Clerk 01892 823193

Email: deputy@pemburypc.kentparishes.gov.uk

www.pemburypc.kentparishes.gov.uk

Pembury Village News is published four times a year by the Parish Council, but the views expressed in the magazine do not necessarily represent official council opinion or policy.

Please note: the Editorial team's decision is final on whether or not to publish any item submitted. They reserve the right to edit (that is to cut, précis, alter, correct grammar and spelling) any item published.

The Editor and Publisher, Pembury Parish Council, are not responsible for any opinions or comments made by contributors or advertisers in the Pembury Village News.

CHAIR'S REPORT

What a wonderful turn out for this year's Picnic on the Green. It was such a fantastic afternoon of entertainment sponsored very generously by James and Carol Cunningham of the Camden Arms and us as a Parish Council. Our local extra-special group 'Sold Out' was on top form and their singer was amazing. A very sincere thank you to them and the Camden who sponsored the 'Jersey Boys' tribute act. They were both brilliant and got lots of the audience up and dancing ! This was the Village Green at its best. A huge thank you to Patrick Gillan for being a superb M.C. who, complete with wigs, kept the afternoon/evening flowing with fun. It was great to see so many new faces on the Green that afternoon so if you have just moved into the Village or came along for the first time – welcome! Please remember - as a Parish Council we are here for you.

As I write this article, the judging for our 'Pride in Pembury' competition for all you superb gardeners was taking place and I was genuinely in awe of the stunning displays and colours there were throughout the Village. Thank you so much to all who took part in helping to enhance our Village. I am so grateful to all our businesses that, despite being busy, still take the time to provide hanging baskets or tubs which, with the Parish Council hanging baskets make for an attractive High Street. Our local farm shop has also excelled with their display. We are proud of where we live and just want it to look its best at all times don't we?

The negativity is that we are experiencing serious litter problems and general scruffiness. We are aware services are being cut back from our two local Authorities, which is why we will need to do more ourselves, so can I respectfully ask that litter is taken home and not just dropped on the pavement. One worry I have is that broken glass has been re-occurring in the Recreation Ground; this is a significant problem and our children and pets are at risk, so please be vigilant about this serious hazard. Our valued litter picker does an excellent job for all of us but we also need your help.

What's next? The Parish Council has the Pride in Pembury Winners' Tea and Awards at the beginning of October, then it's Firework Evening in the Recreation Ground when the Mayor of Tunbridge Wells will do the countdown but there are so many events going on via the local churches and other very worthy organizations so keep an eye out for posters or look at the 'For Your Diary' page at the back of this magazine. Don't forget the coffee stops in our Village which you will find so welcoming - Monday mornings at the Pavilion, Tuesdays the Village Market and Wednesdays at St. Peter's Church. Hope to see you there!

Kind Regards

June

COPY DEADLINE FOR NEXT ISSUE

Any news items or articles for possible inclusion in the next issue of this magazine must be forwarded to the Parish Office, Lower Green Recreation Ground, Lower Green Road, Pembury, TN2 4DZ

1st November 2016

Please send your article and photos in by email to deputy@pemburypc.kentparishes.gov.uk

DO YOUR MEALTIMES FEEL LIKE A JUGGLING ACT?



**Kent Fire &
Rescue Service**



Mealtimes can be a busy time for families and often residents find themselves trying to juggle many other tasks while trying to cook for everyone.

Whether it's trying to get the kids organised or catching up with household chores, it is

tempting to try to fit in other pressing jobs while waiting for food to cook.

There are many other distractions that can cause you to take your eye off your cooking: maybe the phone ringing or a text message or even a knock at the door.

Or maybe taking a few moments to catch the end of a favourite TV programme or to check your social media newsfeed or helping with homework... whatever the activity, you can be sure that it is preventing you from concentrating fully on your cooking.

In a hectic home it's easy to get diverted for longer than you intended and even forget all about your cooking. For most of the time, the worst that may happen is that you burn the dinner, causing a bit of an inconvenience. But sadly, as Kent Fire and Rescue Service (KFRS) knows only too well, unattended cooking can lead to a serious fire which could result in severe damage to your home and may put you, and your family, at risk.

Unfortunately, over half of all the fires KFRS attends start in the kitchen and the majority are caused by unattended cooking, a build up of grease and fat on the cooker, or by kitchen mishaps, where items such as tea towels, chopping boards or washing baskets have been placed on a hot hob.

By taking a few moments to work out what is coming between you and a fire safe mealtime, you can avoid a fire of this type happening in your home.

Make fire safety your main ingredient and help prevent a kitchen fire in your home by following these tips:

- Keep an eye on your cooking and remember to switch off your cooker if you have to leave the room
- Use a timer for items placed in your oven or grill to remind when your food is done and to save it from burning
- Plan and prepare - if you know you have a busy week ahead, try and plan in advance and prepare meals that do not require lots of cooking
- Avoid storing or placing household items on your cooker or stove
- Keep your cooker, grill and oven clean to avoid a build up of grease and fat that could start a fire
- Keep children and pets well away from your cooking area
- Ensure electric cookers, toasters and microwaves are turned off at the mains when you have finished using them
- Fit a working smoke alarm on each floor of your home and test it weekly to ensure it provides early warning in the event of a fire.

For further fire safety advice visit www.kent.fire-uk.org/cooking or call 0800 923 7000.



Earn Extra Money as a Host Family

We are looking for friendly people in

PEMBURY and TUNBRIDGE WELLS

to accommodate short stay (3 - 4 nights) European students

Families can host 2 or 3 students

Out all day - no weekends

Earn up to £180 per stay

(or MORE, if hosting TEACHERS)

Pick up/drop off points –

TESCO PEMBURY or TUNBRIDGE WELLS ST JOHN'S SPORTS CENTRE

For further details please contact **Mrs Emilia Sanders** on **01892 549 880**

Brenchley Dental



General and Cosmetic Dentistry

With combined experience
of over 70 years our
dental professionals
offer a variety of treatments.

New patient oral health check £45

Free cosmetic consultations

0% Finance available

Call us on 01892 723529

General & restorative | Cosmetic | Implants

Whitening | Clear Braces

Veneers | Non Surgical Aesthetic Treatments

Aesthetic Crowns | Hygiene - Direct Access

appointments@brenchleydental.co.uk www.brenchleydental.co.uk

Free onsite parking available

DISTRICT CUB CAMP

Over the weekend of 24th, 25th and 26th June, fourteen Cub Scouts from the 'Sturgeon' (Monday Night) Pack attended a District Activity Camp at a very wet Broadstone Warren Scout Campsite on the Ashdown Forest.



The Cubs spent two nights camping under canvas many for the first time!

Upon arrival the boys pitched their own tents and had a sausage and beans supper before settling down for the night.

Greeted by blue skies and sunshine the next morning, we all enjoyed a bacon sandwich breakfast before heading off for flag break and a morning of activities such as archery, abseiling, leap of faith, pedal carts, potholes, zip wire and many more.

After lunch all the activities were again on offer and despite the persistent rain that fell the afternoon was enjoyed by all.

Finally the rain stopped early evening in time for dinner and a traditional campfire lead by the Tunbridge Wells District Commissioner and owner of the Broadstone Warren Site.

Following a good night's sleep we were all up in the sunshine for breakfast before attending flag break where one of our own Pembury boys was chosen by the District Commissioner to 'break the flag'. Afterwards the boys had the opportunity to try their hand at some circus skills while the leaders and some volunteer parents started striking the tents and packing up. Some brave boys even took up the opportunity to go swimming in the rather chilly outdoor pool!

Despite the wet conditions a great time was had by all.

A video of the weekend can be seen on Youtube, (Royal Tunbridge Wells District Camp).

Richard Alfieri, Akela,
1st Pembury 'Sturgeon' Cub Pack.



BROWNIE PHOTO CHALLENGE



In the summer term, when the weather was good (!) the Brownies liked to get out and about.

In June, they were set a challenge with a twist – they had to find different things and then take a picture. There were many things to find – a ‘For Sale’ sign; a piece of history; an arched window to name a few. There were also things to do – pose beside a post box, hold hands round a lamp post and, possibly the hardest, a picture of the whole team jumping. You have no idea how many tries it took to get that one! Thank goodness for digital cameras.

Two challenges made them think – a picture of a Union Flag and a picture of the Queen. Thanks to a lovely window display for the Queen’s 90th birthday by the Chemist in the High Street, both were easily achieved.

Moirá Allan

1st Pembury Brownies

COFFEE SHOP



A right Royal occasion was enjoyed by all at the Pavilion in Pembury on the 13th June when we celebrated in style our Queen’s 90th Birthday. The Pavilion was decked with Union flags including a very special Union flag lent to us for this special morning by the Scouts and Guides of Pembury. The theme of red, white and blue was a sight to be seen and the traditional cakes and biscuits baked by our team can only be described in one word - DELICIOUS. Thank you to everyone for joining us to celebrate this momentous occasion.

We are open every Monday from 9.30am to 12 noon with the exception of Bank Holidays. On the third Monday we do close earlier at 11.30am. Do pop along - you won’t be disappointed. On fine days we can offer outside seating.

What a lovely morning, with our regulars popping in and some new faces too!

COMPUTER REPAIRS

HOME PC'S • LAPTOPS • SERVERS
INSTALLATIONS • MAINTENANCE • BUSINESS NETWORKS

Free estimates provided within 24 hours.

Recently moved to new workshops in PEMBURY.

Ring or call in to discuss your requirements.



- MG Computer Services -

"A reputable company established in 1982 with experienced staff"

145B Hastings Road - Pembury - 01892 826130



Caroline Milwidsky

The Reliable and Professional Service with the
Personal Touch

Accounting Bookkeeping Payroll and PAYE National Insurance Self Assessment
RTI Compliance Management Accounts Corporation Tax Budgets and cash flows VAT

???? How much time do you spend on your accounts rather than running your business ????

Not only can we prepare your annual accounts and deal with the tax, but we can also help on a day by day,
week by week, monthly or quarterly basis.

Our clients include Self Employed Sole Traders and Limited Companies across a wide
and varied range of businesses.

Contact: Caroline Milwidsky Tel: 01892 891220 - Mob: 07885 249968

Email: c.milwidsky@btconnect.com

Dawn Hodgson

MSSCh MBChA

Chiropodist

Police Checked

Professional Advice
and Friendly Care

Diabetic Assessment &
Maintenance

Verruca Treatment

Ingrowing Toenail Care

Treatment for Fungal
Infections

Day & Evening
Appointments Available

Discounts for Over 70's

Simply Health 50%
Refund Available



**HPC Registered -
Home Visits**

7 Greenleas, Pembury,
Tunbridge Wells, Kent.
TN2 4NS

Mob: 07761 583756

Tel: 01892 824916

Make the right move in

2016

Contact the team

Tonbridge 01732 771616 - Pembury 01892 822880

BarnesKingsnorth



PEMBURY PEOPLE

Gillian Norman

I have chosen the artistic Gillie Norman for this issue's profile.

Gillie was born in the Fen Country (Isle of Ely) and spent many of her holidays in one of the houses her father had designed for his sisters. She recalls that they were a pair of modest detached houses joined by an air raid shelter, which was accessed by a small door by the fireplace. It doubled as her cousin's art studio, which fascinated her.

Gillie's father, who started life as a surveyor, was a talented watercolourist and her mother an excellent needlewoman.

All Gillie's schooldays were spent in Chelmsford, and she remembers her father, as Bridge Engineer for Essex, taking her off on sketching sprees to his favourite spots. Gillie spent many happy hours in the mud under Canvey Island Bridge or messing around in boats on the River Blackwater.

She was never particularly academic and her Headmistress at High School was a Miss Cadbury, a member of the Cadbury Family. She was only really interested in pupils who were university material or destined to become top nurses. Art was not given a lot of time or teaching. So Gillie went to Colchester Art School at 16 and did lots of life drawing, pottery, painting and basic photography and print making. However progress was hampered by not being able to go near the printing presses unless the technician was there- and he never was! One of the teachers was Richard Chopping, who did the illustrations for the covers of the original Ian Fleming 007 books.

Gillie then took a year out and her father found her a job as assistant teacher at a girl's primary school. She found herself in front of a class of 47, all squashed into a small room! She still worries whether they have been successful in life. During this time Gillie was now starting to take art commissions.

After her teaching year, Gillie obtained a place at Bath Academy of Art and a grant for an Art Teaching qualification. Gillie did ceramics and painting as her two main disciplines. She obtained a Distinction for Ceramics, but missed the Painting Distinction by one mark!

Gillie's first job was teaching in a Dunstable Secondary Modern. She was literally the art department, which had no equipment or stock. She stuck it for a year then a friend told Gillie that a boarding school not far away would soon be requiring an Art Teacher. After wavering for a couple of weeks Gillie wrote to the Head, and within a week was offered the job at Hawnes School.

Gillie spent a very happy eight years there teaching drawing and pottery, whilst sharing the room with cookery and needlework! Three years after the old Head left, the numbers dropped and the School had to close in 1975. Gillie is still in touch with many of the girls and staff.

Front page headlines in the Daily Telegraph led to Gillie obtaining the post as Head of Art at Kent College, Pembury. In 1976 she moved to a property in Heskett Park, Pembury. Gillie soon joined the Oast Theatre through one of her Kent College colleagues, wanting some help with scenery. She also later joined Pembury



PEMBURY PEOPLE

Players. As well as painting sets for Kent College and a couple of theatres in Hastings, Gillie had a regular slot at the Oast Theatre for over 30 years.

Gillie loved her job at Kent College, which she held for over 20 years. Due to personal circumstances Gillie felt she needed a change and took a post teaching Art at a Special Needs School in Hastings. This proved a great experience and a few pupils obtained O'Level Art, with the rest obtaining good grades at Entry level.

Gillie retired in 2009 and joined Pembury U3A. She organises the Historic Houses and Gardens Group with her neighbour and the Art Appreciation Group. She has also joined beadwork and one of the paint and natter groups. Today she still paints sets for Pembury Players and teaches a watercolour group. She enjoys helping others to gain confidence and success with their own Art. Over the years she has taken on challenging commissions and painted for family and friends – anything from 'miniatures' to whole wall murals.

Gillie and her partner David, who first met at the Bath Academy of Art enjoy spending time in their lovely garden. In 2015 they were approached by the Pembury Society to see if they would be interested in producing the artwork for the Historic Map on the Village Green. Gillie is fascinated in history and as David and Gillie both like pen and ink drawing, they often work together. They started with the two main churches - David on the Old Church and Gillie was determined to draw the Upper Church with its original spire as she first knew it! They split the other illustrations between them, the results of which now have pride of place on the Village Green for all to enjoy.

Richard Snow



PEMBURY FIREWORK EVENT

FRIDAY 4 NOVEMBER 2016
AT THE RECREATION GROUND,
LOWER GREEN ROAD, TN2 4DZ
FIRE-OFF 7.30PM

FREE ENTRY – RETIRING COLLECTION.
ORGANISED BY PEMBURY PARISH COUNCIL



- New Patients Welcome
- Children seen under NHS
- Full range of preventative treatments
- Cosmetic dentistry (veneers, crown & bridgework)
- Tooth Whitening
- Implant Dentistry
- Digital x-ray
- Direct access to Hygienist
- Relaxing, friendly environment

Dr.Nelis du Plessis B.Ch.D.(Pret)
Katharine Brice Hygienist

Address: 67 Hastings Road, Pembury, Tunbridge Wells, Kent, TN2 4JS
 Tel: 01892 823044 - Email: info@pemburydentalsurgery.co.uk
 Web: www.pemburydentalsurgery.co.uk

Committed to Quality Dentistry



Friendly professional service for all your foot care needs.

Surgery and home visits available. HPC registered.

Reduced fees for over 70s at surgery appointments.

67 Hastings Road, Pembury, TN12 4JS.

All major cards accepted

Surgery: 01892 822855 Mob: 07901922901

2nd PEMBURY RAINBOWS

Perhaps with a mother who has actively been involved in Guiding in the village for over three decades, it was inevitable. Perhaps it's because I grew up with regular Christmas Day showings of 'The Wizard of Oz', or maybe I love Kermit's rendition of 'The Rainbow Connection' too much. Whatever the reason, I have become the new leader of 2nd Pembury Rainbows, meeting on a Monday evening.

And what a unit of girls I have. Ten in number at present, but with three new members joining in September, they are fun, caring, energetic, brave and curious.



Rainbows are at that wonderful age, 5 to 7, where they embrace and enjoy all opportunities given to them and it is my role as their leader to provide a vast range of opportunities. As a unit, we plan to be very active in our learning of how we can help our environment and have a greater understanding of the people and life around us, including each other. Next term we already have lined up a visit to Folly Wildlife Hospital and The Fox Project, as well as visits from The Kent Bat Group, Guide Dogs for the Blind and the local Police. Over the summer, we will be taking part in Bedgebury's BioBlitz, which will give the girls a chance to actively assist in recording all the wildlife to be found at The Pinetum. I can't help but think of them as little eco 'Rainbow Warriors'.

Joining Rainbows is a wonderful first step into Guiding, an opportunity to work as a team, to become more independent, to care for each other and to begin a journey that we hope they will never forget.

Amanda Baker/ Toto

If you are interested in your daughter becoming a Rainbow,
please register her for either the Monday or Thursday Unit on

www.girlguiding.org.uk



Leaflets | Programmes | Posters
Booklets | Wedding Stationery | Calendars
Business Stationery | Yearbooks | Brochures

Established for over 20 years, we are a family run printing company based in Pembury.
We have experience of working with small and medium sized businesses working within predefined budgets and offering a complete service from design to print if required, and 10 years experience of producing Funeral Service Sheets to Funeral Directors and Families.

We also produce exclusive car prints in conjunction with KAR-ART.

COMPOSING OPERATIONS LTD

PRE-PRESS • PRINTING • FINISHING • DOCUMENT MANAGEMENT

T: 01892 823988

E: compops@btconnect.com W: www.composingoperations.co.uk

HELP

You call... we HELP!

We have a specialist tradesman
for **EVERY** trade.

No matter the job... No matter the size!

*Discreet & Confidential Work Undertaken

Mr Morgan Miller

M: 07796868979 24/7 LINE

H: 01892 315712



R Goode Plastering

All plastering & Rendering works

15 years experience Contact for free
quote



1 Herons Way
Pembury TN2 4DH

Tel: 01892 319853 Mobile: 07900 907445
E-Mail: rgoodeplastering@hotmail.co.uk

HOSPICE SHOP

Several years ago I wrote an article for the Village News in praise of our Hospice Shop. Now we are in our 20th year I thought it was time for an update of the progress and changes that have evolved. The shop was originally set up by Sue Boreham from the Link Group. The interior was like Aladdin's cave quite dark with racks so full of clothes, that people had to rummage through them to find their bargains. Bric a Brac was in piles on the floor as we had few display cabinets. Everyone embraced the shop bringing in their donations and we packed them in and piled them high.

Since its inception we have had a number of Managers who have all contributed to the success it is today. Our present Manager Dave, or to give him his full name David Williams, has been our 'Skipper'. He occupies this role with humour, patience and shrewdness. Having access to computerised trading, he can sniff out the many valuable and interesting donations, whether it is designer handbags, (not fakes), or rare china, glass, or quirky items. A smallish shaded blue glass bowl was donated and David spotted something unusual. It had been priced modestly.

However after researching on the internet, surprise, surprise, it proved to be a work of famous glass artist Helen Millard and priced at £1200!!!!. David emailed her and she, by return, offered to buy it from us for the full price. It seems she did not want her work sold unknown and cheaply in a Charity Shop! Sometimes customers comment that items are expensive, but they are usually below that quoted on the internet. We had a beautiful inlaid Italian accordion donated, valued at £450. Many admired it, but few people seemed keen to take it up as an instrument. One of our customers came in and said he could play it and proceeded to entertain us with great verve, but informed us he already owned 7 accordions and did not want another one. Of course as with everything, one enthusiast bought it and I am sure it will be played and treasured.

The shop is open longer hours and all day Saturday which has increased the sales. Still the donations keep coming, many from people down-sizing and clearing out all those cupboards and attics where we all put stuff we hope maybe useful someday, but find we no longer desire or require them. Modern families want dishwasher, microwave-proof glasses and tableware, and the treasured crystal and china of our parents and grandparents appears on our shelves. Thankfully there are still those discerning customers who find these objects desirable and beautiful to have in their homes.

There seems an unending supply of donations through our door but finding volunteers is a problem. Volunteering is not just about a 3 hour shift once a week, but on joining you become part of a 'family', make new friends and become acquainted with people from Pembury and the wider community. David has about 30 volunteers, all ladies and mostly retired but very enthusiastic and committed. We all enjoy working with him even though our shifts can be hectic and busy; there are plenty of laughs and banter. In July David and his wife Amanda arranged for all of us to enjoy a cream tea in the Cricket Pavilion baked and served by them. This was the 3rd year and it was a very social event and gave us all an opportunity to meet up with the volunteers from other days. David and Chris Ashby, who is a Shop Development Manager, presented five of us with badges for twenty years' service! However we still need more people to volunteer so please consider coming into the Shop for the necessary Application Form.

Lastly our thanks must go to all the people, not only in Pembury, but from the surrounding areas who donate so generously, and support the wonderful work of our local Hospice. Personally my family and I have reason to be grateful as my husband died of cancer in 2013 and the support and care we received was outstanding.



Jenny Humphrey

Walker Electrical

Domestic Electrical Contractor

ELECSA/Part P Registered

Fully Insured



For a **FREE** quotation call Neil

07717 170221
01892 822496

PEMBURY FITNESS



PEMBURY FITNESS - EXERCISE CLASSES FOR ALL AGES AND ABILITIES

Current Timetable:

Body Conditioning - Mondays - 9.30am-10.30am Pembury Village Hall
Zumba - Tuesdays - 8pm-9pm Pembury Primary School
Body Conditioning - Wednesdays - 9.30am-10.30am Pembury Pavilion
Clubbercise - Wednesdays - 7pm-8pm Pembury School
Zumba Gold (beginners) - Thursdays - 6pm-7pm Pembury School
Zumba - Thursdays - 7.30pm-8.30pm Pembury School

£5 per class, or £40 for 10 classes

Bookings can be made : www.pemburyfitness.co.uk
or call Adele on 07876 787869

ROYAL BRITISH LEGION POPPY APPEAL 2016

This year's Poppy Collection is being organised by the Parish Council under the guidance of Jeffery Rowland. Most of you will be aware that Jeffery organised the Appeal successfully for many years.

The Appeal includes collections at the Tesco Store Pembury, and static boxes on counters in commercial premises.

This year's collection will take place between 29th October and 12th November.

Certain changes have been put in place nationally by the British Legion, in conjunction with Tesco Stores.

This will mean that empty boxes and poppies will be issued by Tesco Stores and taken back in after each session.

The Parish Office has already been given a list of previous collectors who will be contacted in due course. However there is always a need for more collectors. If you can spare an hour and would like to collect at Tesco Pembury then please phone 01892 823193 to register your name.

We thank you in advance for your support.

Cllr Mrs C Snow





rnli.org.uk



Lifeboats

Come to
The Catholic Hall,
Lower Green Road,
Pembury



AUTUMN FAYRE

Saturday 5 November 2016

10am – 12noon

to be opened by

The Mayor & Mayoress of Tunbridge Wells
Cllr David Neve and Mrs Jill Neve

Admission 50p (including refreshments)
Children 20p

GIFTS * SOUVENIRS * TOYS * GAMES
GRAND RAFFLE * CAKES * HOMECRAFTS
WHITE ELEPHANT * CHRISTMAS CARDS

The RNLI is the charity that saves lives at sea

Registered in England and Wales (209000) and Scotland (SC017796) Charity number CHY 2616 in the Republic of Ireland



RNLI



Burtons has been a part of the local community, which now includes The Tunbridge Wells Hospital, for over 30 years and as such understands the value of a personal, friendly and professional service.

As a smaller firm we are able to get to know our clients and tailor our expertise to meet their requirements. Our excellent staff are approachable and ensure we are easily available to our clients, looking after matters promptly and efficiently.

Our areas of expertise include:

- Residential Conveyancing
- Equity Release
- Lasting Powers of Attorney
- Wills & Trusts
- Deputyship Applications
- Administration of Financial Affairs
- Probate
- Change of Name Deeds
- Employment Law
- Buying or Selling a Business
- Commercial Property
- General Powers of Attorney

The legal assistance we need through life cannot always be put into categories so please contact us and we shall be happy to discuss your requirements with you.

Reflexology for Optimum Health and Well-being

New Pembury Holistic Therapies

The Floating Factor has arrived in Pembury offering Reflexology, Aromatherapy, Swedish Massage and the wonderful healing effects of Reiki treatments.



Holistic therapies help aid the body in restoring its natural healing abilities with huge health benefits and wellness.



These wonderful relaxing treatments help balance, energise and heal thus improving overall well-being and are excellent for relieving stress.

Michelle would like to welcome you to her tranquil therapy room in Pembury just outside Tunbridge Wells. If you would like to make an appointment please contact Michelle on the below details to receive a 20% introductory discount.



Contact Tel: 01892 309604

Mob: 07733074390

Email: michelle25sanson@sky.com

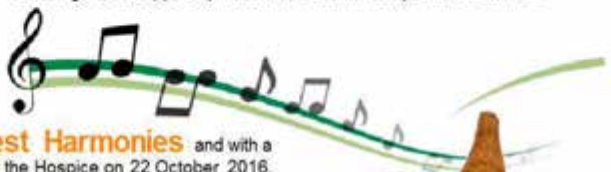
Visit: www.thefloatingfactor.co.uk

(20% Introductory Discounts)



A cornucopia of your favourite songs

On 22 October the **Hospice in the Weald Community Choir** offer a veritable harvest of good music and a variety of other entertainments at the Hospice at Pembury. We are a choir who thrive on diversity so we will have on offer some Disney tunes for children of all ages (0-100), a few traditional airs, some choral challenges all wrapped up with a little showmanship and razzmatazz.

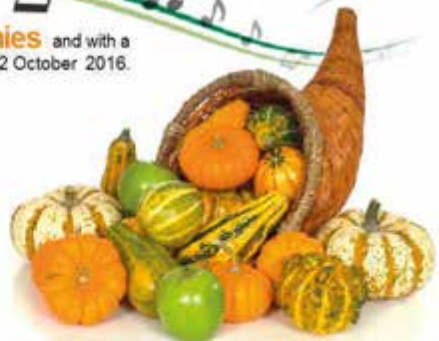


Our concert this year is entitled **Harvest Harmonies** and with a supporting cast we will be performing at the Hospice on 22 October 2016. The doors open at 7.30 pm and the concert starts at 8 pm.



Homemade refreshments will be available and we will be having another of our famous raffles!

Tickets cost £6 per person - you may buy them online www.hospiceintheweald.org.uk or simply join us on the day!



All proceeds go to Hospice in the Weald
Compassionate, individualised, holistic and support care
Registered Charity No. 290276

PEMBURY PICNIC ON THE GREEN 2016

The best way to describe this year's Picnic on the Green would be to use a popular urban term often spoken by our young people and that word is Bangin! In other words quite marvellous darling! The band 'Sold Out' led by lead singer Nell Mellerick got everyone in the mood and even brought the sun out! What powers you have Nel! This annual event is a delightful fixture in Pembury Parish Council's diary and our Parish Chair Cllr Mrs June Crowhurst is full of admiration for everyone who made this event happen. Once again this year the Parish Council is indebted to James and Carol at the Camden Arms for financially supporting the outstanding, phenomenal and colourful 'Jersey Boys Tribute Band' who rocked so much that even the Parish Clerk, Barbara Russell threw caution to the wind and boogied all the way to the end. It is a thrill to see families with their picnics laid out and everyone smiling and just enjoying themselves.

Big thanks to our outrageous and very funny MC Patrick Gillan who was thrilled to have an excuse to wear his pink wig. So from Pembury Parish Council to all our lovely Pembury residents we will see you again next year!!



THE IRIDESCENT STARLING

Starlings (common starlings) are birds that are resident to most of the UK and they can be seen all year round, though more arrive in the autumn to spend winter with us. Starlings can also be found over Europe, Asia and Africa.

Living in groups, starlings are very social and boisterous and they can often be seen in gardens. They are smaller than blackbirds, more upright with a pointed head, sharp pointed beak and a short tail. They can appear black from afar but get close enough and starlings are very colourful and iridescent.

In breeding plumage male starlings have a slight blue grey blush at the base of their bill and the females have a pink blush. Juveniles are light brown grey with a dull bill, before they moult and grow adult plumage.

My Dad calls Starlings harriers because when they are coming in for a landing they remind him of harrier jump jets! They do fly fast and direct and their wings are pointed and triangular. (My Nan however used to call them gobble-de-gooks, possibly due to their feeding habits!) On the deck, Starlings walk or run rather than hop.

If you take the time to watch your Starlings, you'll see they are comical and excellent mimics! They can imitate some other bird species (Blackbirds, Pied Wagtails, and Magpies) and other sounds like phones.

They eat mainly fruit and insects (including many pest insects) but they are omnivorous and can also eat seeds, suet and more. Chicks are fed insects. Starlings use their beak to probe the ground; they have the ability to open their beak in the ground to part the soil and reach buried food. They can actually look down and see what's inside the parted soil, inside their own beak. They can do this due to big muscles for opening the jaw and a narrow skull shape.



Starlings can descend on a garden in flocks and very quickly gobble up any bird food provided; personally I enjoy watching this but it can feel like it's hurting my wallet. To make sure small birds get a look in, an enclosed feeder which excludes the Starlings could be used. Starlings also have a hard time on traditional hanging feeders.

I love it when the fledglings are in the garden and watching both parents run up and down grabbing full beaks of food and shoving it into their young gaping mouths.

Starlings breed from April to June and they can rear two broods if they're lucky. They nest in holes in trees or buildings; it's the male that starts it with some grass, then the female makes it comfy by lining it with moss and feathers. Starlings will use nest boxes and I intend on getting, or making, some for them. They need a hole diameter of 45mm.

When in a flock, Starlings have the wonderful ability to form murmurations. They are wonderful aerial displays of flying prowess! Thousands of birds flying in perfect unison. This tends to occur when Starlings form autumn roosts; they fly together before settling down for the night, possibly exchanging information on feeding grounds. There is also safety in numbers and it's thought the displays make it harder for predators such as the peregrine falcon to target a single bird. In the UK, according to RSPB website, early evening just before dusk is the best time to see them. Some of the RSPB reserves are good murmuration sites.

Declining numbers make starlings a conservational priority; they are currently on the red list of threatened species, though they are still one of our most common garden birds. Reasons for their decline may include - changes to farming practices and land management, fewer nesting sites due to development and less food due to pesticides.

Consider welcoming them to your garden and enjoy their antics and the cheap pest control. To encourage them provide some food and water. They prefer short grass to forage in and if you can, a few nest boxes would help. Attracting more insects attracts more birds, so planting with this in mind would also be beneficial.



Hair & Beauty

- Wella Master colour award salon
- Experienced staff
Vidal Sassoon trained.
- Loyalty cards
- Student and senior citizens discounts.
- Great Lengths hair extensions.
- Wedding hair and photography packages.

Check our website and app for monthly offers.
Contact Helen for Beauty treatments at Putlands
Leisure centre at Paddock Wood

Tel: 077240 026964

43 Hastings Road, Pembury, Kent TN2 4PB

Tel: 01892 824420

www.bladerunners2.co.uk



PEMBURY U3A

I was elected as Chairman of Pembury U3A back in July. As I told members at the time, I am very proud to take over the helm from my predecessor Sally Sturcke and to continue for the next three years to build on the excellent foundations created by Sally, Pauline Hawker, Janet Richardson and everyone else who has contributed to our U3A's success.

The year ahead is especially significant as it represents the 10th year since our U3A was founded and we have also now reached the milestone of having over 300 members. Within that membership we have a wide range of experience, skills and abilities which are all put to good use in the interest groups which are the core of U3A's activities. There are now well over 50 interest groups covering areas such as creative arts and crafts, sports, languages, games, music and culture (to name just a few). In addition there are excursions, visits, lecture lunches, holidays and social events organised throughout the year as well as our regular monthly meetings in the Village Hall where we usually have a guest speaker. All this is open to members paying a very modest membership fee.

Published last month was a survey of older people's attitudes to life in retirement - what they like, what worries them and so on. One of its key findings was that loneliness is a major factor in unhappiness. But I can honestly say that U3A members are rarely lonely; there is nearly always something going on for members and plenty of things to look forward to, and all in the company of friendly, welcoming people.

Members can join our U3A at any time but our activities restart in early autumn. On 6th September from 2.00 pm we have our signing-on session in the Village Hall when current and prospective U3A members can come along to meet the leaders of our interest groups and decide which they wish to join as well as finding out what else is on offer. So if you are no longer in full time employment or are without full-time parental responsibilities and whether you are a long time resident of Pembury or have recently moved in to the village, why not come along and see what our U3A can provide for you?

For more information, please go to our website www.pemburyu3a.org or contact our membership secretary on 01892 824012.

Roger Gardner
Chairman



Photo taken by a member of the
Pembury U3A Digital Photography Group



Our challenging 10K Road Race is back and will be taking place on **25th September** starting at **10:00am** from the **Lower Cricket Ground, Tunbridge Wells**.

This year we plan to make our 10K bigger and better than ever as we look to attract over 1000 runners. There will be prizes for 1st, 2nd and 3rd places for both male and female racers supplied by our supporters Nuffield Health. Join us for a Zumba warm-up class before the event and planned entertainment throughout.

Prices

Adult:	£30	Affiliated club runner:	£23
Child under 16 & over 12:	£15	On the day:	£35

Your Support

As a charity, not part of the NHS, it costs over £7 million to run Hospice in the Weald every year so your involvement in our 10K run will play a big part in making a difference to the lives of our patients, their families and carers. Every donation we receive, no matter the size, makes a difference.

How to sign up

To sign up for the 10K Road Race please go onto our website at: www.hospiceintheweald.org.uk. Alternatively you can contact Duncan Philip - Fundraising Events Coordinator, on 01892 820527 or duncan.philip@hospiceintheweald.org.uk

Kinesiology | Sports Massage

- Kinesiology is a holistic remedial hands on therapy using simple muscle tests to identify body imbalances and gentle techniques to bring the body back to balance.
- Benefits include relief from a wide range of conditions; from neck & back pain, frequent infections and illnesses, weight, hormonal issues, digestion, IBS, stress, fatigue, headaches and more...
- Massage treatments help stretch out the fascia easing tightness and restriction of movement. Releasing soft tissues that are stuck together and feel hard, stiff and sore, easing tension, improving mobility and reducing general aches and pains.
- Appropriate for everyone of any age.

balanced
being

Kinesiology · Nutrition · Massage · Skin Care

Contact: Clare

Tel: 07471 734799

Email: clare@balancedbeingkinesiology.co.uk

BoogieFit OVER 50's!

"Probably the fittest folk in Kent"

**Great Music, Fun Atmosphere.
Smile and Enjoy Keeping Fit**

The Over 50's Classes held at:

Matfield V.Hall Tuesdays 9.30am - 10.30am

St Andrews, P.Wood Thursdays 10am - 11am

Pembury V.Hall Wednesdays 9.30am - 10.30am

.....

The Over 65's Class held at:

Matfield V Hall

Tuesdays 10.45am - 11.45am

£6 per session

It's never too late to Get Fitter!!...
So Bite the Bullet



Please call Charlotte Fairs on
01892 890841 or 07887 868438
or email: info@activefuture.co.uk



Pippins Farm Apple Day

Sunday October 16th 2016

11am – 5pm



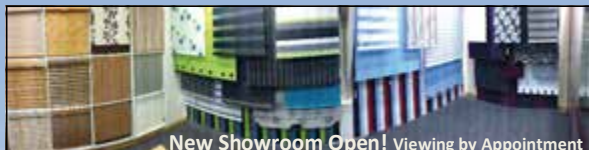
- Apple Pressing Demonstrations
- Free litre of fresh juice per adult (own container)
 - Juice and Cider Tastings
- Apple Tastings and Displays – approx 50 varieties
 - Orchard Tours
 - Pick Your Own & Farm Shop
 - Apple Games
 - “Apple Art” Display
- Hog Roast & Homemade Refreshments

ENTRY: Adults £4 (proceeds to Hospice in the Weald)

From A21 – take A228 for Paddock Wood. Follow signs for Pembury and Hospice in the Weald.

Pippins Farm, Maidstone Road, Pembury, Kent, TN2 4AD
(www.pippinsfarm.co.uk) 01892 824544)

Reg Charity No. 280276



THE BEST KEPT SECRET IN PEMBURY!

Penumbra Blinds have been Manufacturing & Supplying Internal Window Blinds & Curtains, External Awnings and Canopies to residential and commercial customers from our facilities on Romford Road since 1991!

Your truly local company for any of the following:-

- ◆ All types of Internal Blinds including the new Vision™ roller blind system
- ◆ External Blinds, Awnings, Canopies & Gazebos
- ◆ Solar Control & Security Window Films
- ◆ Friendly Service
- ◆ Expert Advice
- ◆ No Pressure Sales!

Visit us at the far end of Romford Road and find out why we've been here so long!



Tel: 01892 825522 E-mail: info@penumbrablinds.com

www.penumbrablinds.com



Unit 2 Albans Farm, Romford Road, Pembury, Tunbridge Wells TN2 4BB



Clear professional advice
Cost effective solutions
For all your hedging and tree surgery needs

Nick Winram Tel: 01732 440050
info@treeability.co.uk Mob: 07974 918879
www.treeability.co.uk

PRIVATE TUITION

FOR 7-11 YEAR OLDS

Experienced teacher offers:
Booster English and Maths.
Preparation for 11+ and
Common Entrance/Scholarship exams.
French and German to GCSE

Enquiries to:
Mrs. Nicolette Collins
MA Oxon, PGCE

Tel: 01892 822093 / 07826 523251
nicolette5@hotmail.co.uk



THE PEMBURY SOCIETY



The Pembury Society holds its Autumn Meeting (including the AGM) on Wednesday 19th October, 7.45pm, at the Upper Church, when our speaker is Glenn Douglas, CEO of the Maidstone and Tunbridge Wells NHS Trust which includes our hospital at Pembury.

I am sure that all of us have had some contact with the hospital since its transformation, either as a patient or visitor, serving our community as it does. Do come along and hear some of the inside stories, the challenges of running a busy hospital, meeting patient expectations, its financial constraints as a consequence of being placed in Special Measures and how that might impact on patients, and much more!

It will be followed by a Question and Answer time. So do come, and bring your questions for what should be an interesting evening!! Members and non-members welcome. (Non-members £3 which enables you to join the Society).

It is our AGM as well, so we will be reporting to members on the activities during this last year, reviewing the Annual Accounts, and electing officers for the coming year. We will also update you on planning applications that we have been monitoring during the last six months.

David Hanes
Chairman

SUMMER SHOW – PEMBURY GARDENERS

The Pembury Gardeners' Society held its Summer Show on Saturday 25th June at the Village Hall.

The entries were slightly down on last year but this was probably due to the poor weather we had earlier in the month. Cold nights and rain caused bud drop in the sweet peas and the rain and hail damaged the roses; apart from this the quality was high.

The awards were presented by the chairman Mrs Ann Purton to the following:

Sweet Peas

John Gorringe Award

for most points in classes 1 to 5 ~ Mrs B Brown.

Doug Steward Award

for the best vase in class 1 ~ Doug Drury.

National Sweet Pea Society Medal

for best vase in classes 1 to 6 ~ Doug Drury.

Roses

John Baggeson Award

for most points in classes 9 to 16 ~ Miss M Pettitt.

Society Award

for best exhibit in classes 9 to 16 ~ Miss M Pettitt.

Floral Art

Helen Reeves Award

for most points in classes 30 to 33 ~ Mrs B Penfold.

Certificate for best floral art exhibit

in classes 30 to 33 ~ Mrs B Penfold.

Vegetables

R W Smeal Award

for most points in classes 39 to 43 ~ Bob Purton.

Cookery

Miss Harthan Award

for most points in classes 49 to 55 ~ Mrs H Wood.

Handicraft

Mary Standen Award

for most points in Classes 58 to 61 ~ Mrs H Wood.

We look forward to seeing you at the next show on Saturday 10th September at the Village Hall.

The Society would like to thank all the helpers and exhibitors as without your help we would not be able to put on a Show.

Schedules are available from 18 Lower Green Road.

John Wood
Show Secretary



Wright & Son

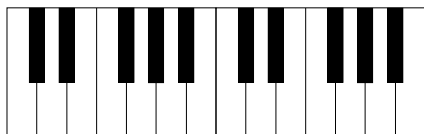
Painters and Decorators

- ❖ Interior painting
- ❖ Exterior painting to include sheds, fencing and garages
- ❖ Wallpaper hanging
- ❖ Friendly and reliable service
- ❖ Free quotations given

Tel: 07889 285769

01892 834402

www.wrightandson.co.uk



Piano Lessons Theory of Music Lessons

Catherine S Brown LRAM PGCE

*Member of The Incorporated Society
of Musicians*

- Highly qualified and experienced teacher
- Beginner to grade 8 offered (all ages)
- Outstanding success rate with public examinations

Contact: 01892 824670

catherinesusanbrown@hotmail.com



THERE IS A PUBLIC ACCESS
DEFIBRILLATOR
ON THE WALL AT THE
CHEMIST SHOP
IN THE HIGH STREET



All patients are invited to The Waterfield House Practice Patient Group (PPG)'s AGM on Tuesday 8th November 2016 at 7:00pm at Waterfield House Surgery, 186 Henwood Green Road, Pembury.

You will hear about some of the changes which have happened during the year and initiatives which will be implemented in the coming months.

This year will also be focusing on mental health, which is almost a 'hidden disease', but of course it is as extensive and diverse as physical diseases. However it is often overlooked and not well understood.

We often think that it only affects people that have suffered a trauma or are under stress at work or older people with dementia. The reality is very different and the signs are often missed when it affects children and teenagers. We will have somebody from the Child and Adolescent Mental Health Services ('CAMHS') to come and enlighten us on that issue and the signs to look out for.

Another form of mental illness with which we might be more familiar is dementia. It is something that many people fear will happen to them, or to their loved ones, knowing that they will be 'lost' perhaps years before they die. From personal experience, not being able to remember happy times with my step-grandmother and for her not to remember me, although she married my grandfather a couple of months after I was born, is distressing.

Learning to live with that is very difficult but the Alzheimer's Society gives tremendous support to people in that position and, as important, the Society is able to help us all to understand how we can prepare to live with, and delay the effects of, dementia.

I hope that you will join us.

Justin Cumberlege,
Chair of the Waterfield House Practice Patient Group



Citizens Advice Bureau
Pembury Library
Alternate Tuesdays
9.30 - 11.30am

September	13th	27th
October	11th	25th
November	8th	22nd
December	6th	20th

REMEMBRANCE SERVICE

The Annual Remembrance Parade and Service will be held on Sunday 13th November at 10.45am in St. Peter's Upper Church, Hastings Road, Pembury.

Following the service wreath laying will take place at the War Memorial.

CIVIC AMENITY VEHICLE DATES AND TYPES OF COLLECTIONS

DOMESTIC RUBBISH	COMPOSTABLE GARDEN RUBBISH
18 SEPTEMBER	4 SEPTEMBER
16 OCTOBER	2 OCTOBER
13 NOVEMBER	30 OCTOBER
11 DECEMBER	27 NOVEMBER
8 JANUARY	22 JANUARY
<p>12.00 - 12.55 Henwood Crescent 13.00 - 13.55 Herons Way 14.00 - 15.00 Woodhill Park</p>	

Are you looking to lose weight, cut down on sugary snacks, do more exercise or want to find ways to manage stress?

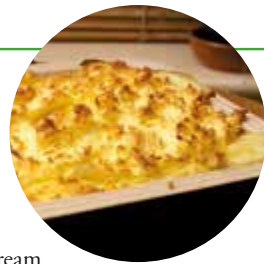
Why not book yourself in for a free one to one session with Healthy Lifestyles Advisor, Kathryn, from Tunbridge Wells Borough Council's Health Improvement Team. Kathryn is based at Waterfield House Surgery on the second Friday morning of each month. Kathryn has a degree in Nutrition and Health as well as a level 4 certificate in exercise instruction for people who are overweight. She has also undertaken skills and training in mental health first aid, smoking cessation and alcohol advice. During your 30 minute appointment you will be offered advice and guidance to help you achieve your personal goals. Further support will be available over a series of appointments to track your progress. Kathryn also has a great deal of knowledge about the local area and can also offer information and signposting to other services. Topics that Kathryn can offer support with include:

- Weight loss and weight maintenance
- Healthy eating
- Being more active
- Stopping smoking
- Alcohol brief advice
- Diabetes and sugar control
- Lowering cholesterol
- Mindful eating
- Managing stress



Appointments available between 10am -12pm on the 2nd Friday of each month at Waterfield House surgery

RECIPES



OLD FASHIONED FISH PIE

450g (1lb) Haddock, Cod or Coley Fillets
300ml (½ pint) Milk
1 Bay Leaf
6 Black Peppercorns
2 Onion Slices
1 Medium Egg
Salt and Pepper

150ml (¼ pint) single cream
2 tbsp. Parsley
6 tbsp. Milk
900g (2lb) Potatoes – cooked and mashed
65g (2½ oz) Butter
3 tbsp. Flour

1. Put the fish in a frying pan, pour the milk over, add the bay leaf, peppercorns, onion slices and a pinch of salt. Bring to the boil, cover and simmer for about 8-10 minutes
2. Lift the fish from the pan and put onto a plate, flake the fish, discarding the skin and any bones
3. Strain the milk and put to one side
4. Melt 40g (1½ oz) butter in a pan, stir in the flour and cook for a minute or so. Remove the pan from the heat and gradually stir in the reserved milk. Bring to the boil and stir until the sauce thickens. Season.
5. Stir in the cream and fish and add the chopped parsley. Spoon mix into a 2 pint pie dish (200°C) 180° fan – Gas mark 6.
6. Spoon the potatoes over the fish mix and roughen with a fork
7. Cook for 15 minutes. Beat the egg and brush over the pie and cook until golden brown.

You could try: adding cheese 125g (4 oz) to the sauce

QUEEN OF PUDDINGS

2 oz Caster Sugar
½ pint Milk
½ pint Breadcrumbs
½ oz Butter
2 pint ovenproof dish

Grated Rind of 1 Lemon
½ oz Caster Sugar
2 eggs – separated
2 tbsp. Jam



1. Warm milk and butter and pour over the breadcrumbs, adding the lemon rind and sugar (½ oz)
2. Set aside for ½ hour to swell
3. Beat in egg yolks and cook - (200°C) 180° fan – Gas mark 6 for about ½ hour until set
4. Spread a layer of jam over the top
5. Beat egg whites until thick, gradually beat in 2 oz caster sugar
6. Pile over the top and cook. 120°C – Gas mark 3 for about 20 minutes until crisp and golden

NEW SERVICE

**Deliver
myfeed**.co.uk



PET & ANIMAL FOOD
Delivered To Your Door

Why shop with us...

- ✓ Huge range of products for all of your pets & animals
- ✓ Free delivery on orders over £25
- ✓ Regular delivery day
- ✓ Friendly & helpful delivery driver
- ✓ No need to be in, items can be left in a safe place
- ✓ Competitive prices on top brands

or visit us to shop
in store at

Broadfeed



6&7 Spa Industrial Park,
Longfield Road, Royal Tunbridge
Wells, Kent TN2 3EN

Order online at www.delivermyfeed.co.uk or call us on 01892 515 010. Find us on



Pembury, Kent

personal touch computers

www.pt-c.co.uk

n e t w o r k i n g



Home and business IT

Up front costs, no unexpected hourly fees

s e c u r i t y



Laptops/custom PCs

Wireless / ADSL / CABLE installs, helpful advice

r e i n s t a l l a t i o n



Callouts available

Business hours / evenings and weekends

u p g r a d e s

Aaron Taylor 07545 996 410
email – aaron@pt-c.co.uk

P C / s e r v e r b u i l d s

r e p a i r s

WHY ARE WE PAYING TOO MUCH FOR OUR GAS AND ELECTRICITY?

Did you know that two out of every three households across the UK are paying more than they need to for gas and electricity? In many cases, substantial savings are available by changing to a different supplier or tariff. Given how carefully most of us budget these days, it seems really strange that so many of us still pay too much for such a basic essential. So why is this happening? It could be a mix of three things:

1. Inertia. Generally speaking, if we do nothing, our electricity and gas keep arriving, and we keep paying for it. It's not like normal shopping where the very act of buying things prompts us to look at prices and find the best value.
2. Confusion. Energy suppliers offer multiple tariffs, with different standing charges and unit charges, fixed and variable prices, and different payment mechanisms, so many of us feel confused, and don't feel confident we can find the best deal.
3. Lack of trust. Research by the consumer organisation Which? showed that only one person in every five thinks their energy supplier will offer them the best available deal, so it's not surprising we aren't all convinced that switching will be a safe move.

Would you like practical help to get the best deal for your energy?

Citizens Advice is working with the energy regulator Ofgem to offer you free, impartial advice on how to get the best deal for your gas and electricity. We are particularly keen to support people who are: in fuel poverty; of pensionable age, living with a disability or long term illness; on low incomes or living in rural areas. But advice is free to everyone, regardless of circumstances so do contact us now (see below).

When you contact us, we will arrange a meeting to help you. Usually this will be at one of our branch offices in Tunbridge Wells and Cranbrook, but if you are less mobile, we may be able to visit you at home. We will work with you to understand your personal circumstances, your current energy contract and what you are paying. We will explain the options available to you, and show you the pros and cons of each, including an indication of how much money you might be able to save. If you are currently on a pre-payment meter, or in debt to an energy company, we will explain how this affects your options and suggest practical steps to improve. We can also assist with the practical process of switching tariff or supplier, and with other ways to reduce your fuel bills, such as insulating your home and managing your energy usage more effectively.



Contact Citizens Advice now by emailing advice@twcab.cabnet.org.uk, by dropping in to the Tunbridge Wells Gateway, or by calling us on 01892 533880.

FOR YOUR DIARY

Village Market – Village Hall, Tuesday 9am – 11.30am
 Town/Country Housing Group Clinic – last Tuesday in the month - Housing Manager Stephen Aspinall
 CAB – Pembury Library – alternate Tuesdays 9.30am – 11.30am
 Community Coffee Shop – Pembury Pavilion, Recreation Ground – Mondays 9.30-12noon
 'The Shed' Youth Café – at Pembury Baptist Church – Fridays 6 – 8pm (school yrs 7-13) term time only

Sept			
5th	Parish Council Meeting	8pm	Parish Council Office, Recreation Ground
5th	Flower Workshop	8pm	Pembury Baptist Church
10th	Pembury Gardeners'	2pm	Autumn Show – Village Hall
13th	Tuesday Club for over 55s	10-2pm	Pembury Baptist Church
14th	Women2Women Indian Meal	7.30pm	Baptist Church – Speaker: Karen Hickson-Smith
29th	Beginners Free Computer Course	weekly	Meet at Baptist Church for lift to Kent College – Contact 825590
Oct			
2nd	Harvest Service & Harvest Lunch	10am	Pembury Baptist Church
3rd	Parish Council Meeting	8pm	Parish Council Office, Recreation Ground
3rd	Flower Workshop	8pm	Pembury Baptist Church
4th	U3A	2pm	Village Hall – Israel & Palestine Speaker: Brian Beeley
5th	Mum2Mum Quality 2nd hand Sale	7-8.30pm	Pembury Baptist Church Hall
6th	Mum2Mum Quality 2nd hand Sale	10am – noon	Pembury Baptist Church Hall
7th	Evening WI	7.45pm	Village Hall – Zumba Demo/Talk/Join in
16th	Pippins Apple Day	11am – 5pm	Pippins Farm, Maidstone Rd, TN2 4AD
19th	Pembury Society Autumn Meeting & AGM	7.45pm	St. Peter's Upper Church – Speaker Glenn Douglas CEO Maidstone/Tunbridge Wells NHS Trust
Nov			
1st	U3A	2pm	Village Hall – A Wealden Woman's War Speaker: Penny Harris
4th	Parish Council – FIREWORKS	7.30pm	Recreation Ground
4th	Evening WI	7.45pm	Village Hall – Christmas Craft Workshop
5th	RNLI Autumn Fayre	10am-12noon	St. Anselm's Catholic Hall
6th	Service to Remember the Departed	3pm	St. Peter's Upper Church
7th	Flower Workshop	8pm	Pembury Baptist Church
7th	Parish Council Meeting	8pm	Parish Council Office, Recreation Ground
8th	Patient Participation Group AGM	6.30pm	Waterfield House Surgery – Talk from the 'Dementia Friends' and Child and Adolescent Mental Health Issues
13th	Remembrance Sunday	10.45am	St. Peter's Upper Church
19th	Pembury Ladies Breakfast £10 pp (823174)	8.30am	The Mercure Hotel – Flower Arranging Theme
26th	Christmas Fayre	10am-12noon	St. Peter's Upper Church
Dec			
2nd	Evening WI	7.45pm	Village Hall – American Supper
5th	U3A	2pm	Christmas Lunch
5th	Parish Council Meeting	8pm	Parish Council Office, Recreation Ground
5th	Flower Workshop	8pm	Pembury Baptist Church
10th	Christmas Concert	7.30pm	St. Peter's Upper Church
11th	Civic Carol Service	6pm	St. Peter's Upper Church

Richard Snow has taken over responsibility for updating the Village Diary, which can be viewed at www.pembury.org.
 The diary serves two purposes. Firstly to enable event organisers to check the diary before arranging an event to avoid clashes. Secondly to enable everyone to know what is happening in the village. It is important that information is sent to Richard at events@pembury.org with date, times, title of event, venue and contact details.

Please note that to view the calendar you must be using a recent version of Firefox, Google Chrome or Internet Explorer (IE11 or later). Computers running Windows XP will only be able to view the calendar using Firefox or Google Chrome.

CRIME FIGURES

Recorded crime in Pembury

If a road name does not appear in the table below, it is because no crimes have been reported to Kent Police in that road during the specified period.

Crime type by reported month	Violent Crime	Burglary Dwelling	Burglary Other	Theft of Motor Vehicle	Vehicle Interference	Criminal Damage Offences	Theft Offences (exc vehicle offences)	Drug Offences	Possession Of Weapons	Other Offences	Total recorded crime
Apr-16	10		1		1	7	6			1	26
May-16	8	1	3	1		6	7	1	1		28
Jun-16	12		1			2	4			1	20
April - June 2016	30	1	5	1	1	15	17	1	1	2	74

	Violent Crime	Burglary Dwelling	Burglary Other	Theft of Motor Vehicle	Vehicle Interference	Criminal Damage Offences	Theft Offences (exc vehicle offences)	Drug Offences	Possession Of Weapons	Other Offences	Total recorded crime (exc BURGLARY DWELLING & OTHER)
A21 A						1					1
AMBERLEAZE DRIVE						1					1
BEAGLES WOOD ROAD	1					1					2
BELLFIELD ROAD							2				2
BRICKFIELDS						1					1
CAMDEN AVENUE	1										1
CHURCH ROAD	1										1
FOREST WAY	1										1
HASTINGS ROAD						1					1
HENWOOD GREEN ROAD	4					1				1	6
HENWOODS CRESCENT	2					1					3
HENWOODS MOUNT	2										2
HIGH STREET	3						3				6
MAIDSTONE ROAD							1				1
PEMBURY ROAD	3			1		4	7		1	1	17
PENNS YARD	1										1
RIDGEWAY	1					1		1			3
ROMFORD ROAD	2						1				3
SNIPE CLOSE	1										1
THE GROVE	1				1						2
TONBRIDGE ROAD	5					3	2				10
WOODSGATE WAY	1										1
WOODSIDE ROAD							1				1
TOTAL RECORDED CRIME (EXC BURGLARY DWELLING & OTHER)	30			1	1	15	17	1	1	2	68

The data above was extracted from Kent Police's LIVE crime recording system GENESIS on 5th July 2016 at 12:30 hrs, and is therefore subject to change.

CRIME REPORT

I have just realised as I write this report on July 25th for the months of April, May and June that Christmas is exactly five months away!

Unfortunately recorded crime figures for the last quarter make depressing reading. When I reported the figures for the first quarter of the year I thought we had turned the corner and now right out of the blue I have received figures that have risen quite sharply, and are against the trend for this time of year. But, whilst they are disappointing I would ask you to remember that Pembury is still a very safe place to live and that the population of Pembury is considerably larger than most of the surrounding Parishes such as Matfield, Brenchley, Horsmonden, Capel and Five Oak Green for example. The total of 74 equates to less than one a day, but this is still too many.

Unfortunately, criminal damage, the mindless damage to people's property is nearly twice as high as the previous quarter, 15 against 8 and theft offences, excluding vehicles, again nearly twice as high 17 against 9.

For the first time in all the years that I have been

reporting these figures, four instances of dangerous dog activity have been reported. I have no other information on this and I don't know if it involved the action of one breed that has been banned, or if it was a badly controlled dog or if anyone was hurt. These items are included in the violent crime figures which also include six of domestic violence. There were also three sexual offences, one kidnap or false imprisonment, two public order offences, one wounding, (thankfully not serious), one attempted wounding and eight each of assault and common assault; please remember that assault does not always result in injury. There was also one threat of homicide but thankfully it would appear that this was more of a threat.

Please remember that these crime figures are exactly the same as those sent by the Central Analytical Team sent to Police Headquarters in London. We must give the Police one hundred per cent of our support and also each other and I still believe that the stronger a community is the better we will be able to fight crime.

Be careful out there.

Hugh Boorman.

USEFUL CONTACT NUMBERS/EMAIL ADDRESSES

Parish Council Chair	Cllr Mrs J Crowhurst	01892 824873
Clerk to the Parish Council	Mrs Barbara Russell	01892 823193
Tunbridge Wells Borough Council	info@tunbridgewells.gov.uk	01892 526121
Kent County Council	county.hall@kent.gov.uk	03000 414141
Town/Country Housing Manager	info@tchg.org.uk (Stephen Aspinall)	01892 501480
Pembury Surgery		01892 825488
NHS Medical Advice		111
Tunbridge Wells Hospital, Pembury		01892 823535
Pembury Pharmacy		01832 822896
Pembury Library	pemburylibrary@kent.gov.uk	01892 822278
Police – Emergency		999
Police – Non-Emergency		101
Childline		0800 1111
Samaritans		116 123
St. Peter's Upper Church	Rev'd Douglas Robertson	01892 824761
St. Anselms Catholic Church	Father Ed Tomlinson	01892 825009
Pembury Baptist Church	Pastor Dave Baxter	01892 825590

YOUR REPRESENTATIVES

PARISH COUNCIL



Cllr Mrs June Crowhurst
44 Elmhurst Avenue, TN2 4DA
Tel: 824873
Chair of Parish Council



Cllr Sean Cawley
c/o Henry Paul Funerals
10 High Street, TN2 4NY
Tel: 825505
*Chair of Environment/Environmental Issues
(inc. Allotments & Burials) Working Group*



Cllr Alan Gaukroger
The Limes, Cornford Close, TN2 4QP
Tel: 824671



Cllr Mrs Shelley Harris
29 Lower Green Road, TN2 4DZ
Tel: 822544
*Vice Chair of Parish Council
Chair of Audit, Finance & Personnel Working Group*



Cllr Mrs Louise Mills
114 Henwood Green Road, TN2 4LN
Tel: 07882 65416



Cllr Steve Rose
84 Woodhill Park, TN2 4NP
*Chair of Planning &
Highways Working Group*



Cllr Mrs Chris Snow
1 Cornford Park, TN2 4PW
Tel: 825428



Cllr Mrs Katy Brooks
54 Hastings Road, TN2 4JP
Tel: 825882



Cllr David Coleman
22 Ridgeway, TN2 4ER
Tel: 823402
Vice Chair of Parish Council
*Chair of Amenities, Christmas Lights
Pride in Pembury & Public Relations*



Cllr Patrick Gillan
1 Knights Close, TN2 4EL
Tel: 825324



Cllr Patrick Kirby
51 Hastings Road, TN2 4JS
Tel: 824431



Cllr Mrs S Sharp
1 Sweeps Hill Close, TN2 4LT
Tel: 823040



Clerk to Pembury Parish Council
Barbara Russell,
c/o Parish Council Offices,
Lower Green Recreation Ground
Lower Green Road
Pembury, TN2 4DZ
Tel: 823193
Email: clerk@pemburypc.kentparishes.gov.uk

Deputy Clerk to Pembury Parish Council
c/o Parish Council Offices,
Lower Green Recreation Ground
Lower Green Road
Pembury, TN2 4DZ
Tel: 823193
Email: deputy@pemburypc.kentparishes.gov.uk

BOROUGH COUNCIL

Cllr Paul Barrington-King, 57 Henwood Green Rd ,TN2 4LH Tel: 07899 731696
Cllr David Reilly, 8 Forest Way, TN2 2EP Tel: 458216
Cllr Sue Nuttall - 6 Greenleas TN2 4NS Tel: 07973 273244

COUNTY COUNCIL

Mr Chris Hoare
KCC, Sessions House, County Hall, Maidstone, ME14 1XQ

VILLAGE ORGANISATIONS

AGE CONCERN

Mrs Sandra Springett. Tel: 522591

AMBERSIDE DANCE STUDIO

Principal: Sadie Van Der Spuy. Tel: 07734 053509

www.360dance.co.uk

CATHOLIC CHURCH

Fr. Ed Tomlinson. Tel: 825009

SECRETARY OF PEMBURY

CONSERVATIVE ASSOCIATION

Sue Nuttall. Tel: 01892 822776

FRIENDS OF PEMBURY PARISH CHURCH

Chairman: Mrs S. Clarke, Little Stanton, Romford Road.
Tel: 823932

GUIDES, BROWNIES AND RAINBOWS

Mrs M. Allan, 9 Henwood Green Road. Tel: 822373

HOSPICE IN THE WEALD

Maidstone Road. Tel: 820500

KENT COLLEGE

Headmistress: Ms J. Lodnick. Tel: 822006

KENT COLLEGE PREP SCHOOL & NURSERY

Headteacher: Mr O. Snowball Tel: 820204

LIBERAL DEMOCRATIC PARTY

David Mills. Tel: 825577

LITTLE RASCALS

c/o PBC Office. Tel: 825590

MULTIPLE SCLEROSIS SOCIETY

TW District. Tel: 0845 6037882

NATIONAL FEDERATION OF THE BLIND, UK

Michael Coggles. Tel: 822705

NEIGHBOURHOOD WATCH

Janet Ditchett. Tel: 822586

OUT AND ABOUT CLUB

Sue Giles. Tel: 823318

PEMBURY ATHLETIC (YOUTH) FOOTBALL

CLUB Colin Forward. Tel: 825436

PEMBURY BAPTIST CHURCH

Church Office. Tel: 825590

PEMBURY BOWLS CLUB

Phil Griffin. Tel: 01892 823129

PEMBURY BRIDGE CLUB

Geoff Plummer. Tel: 824362

PEMBURY CRICKET CLUB

Secretary/Treasurer: Mr A Weaver,

51 Heskett Park. Tel: 824362

PEMBURY DAY CENTRE

c/o PBC Office. Tel: 825590

PEMBURY ECO GROUP

Rick and Masha Bayles. Tel: 822865

PEMBURY FOOTBALL CLUB

Saturday Secretary: Bill Baker. Tel: 825822

Sunday Secretary: Phil Craxton. 823928 Chairman:

Andy Rice-Tucker. Tel. 822483

PEMBURY FOOTPATH WALKERS

N. & K. Franklin, 11 The Meadow. Tel: 823212

PEMBURY GARDENERS' SOCIETY

Ann Purton. Tel: 824223

PEMBURY PAVILION BOOKINGS

Gillian Mayrick. Tel: 824852

PEMBURY PLAYERS

James Whitehorn. Tel: 824854

PEMBURY SCHOOL

School Office. Tel: 822259

PEMBURY SCHOOL ASSOCIATION

Chair: Theresa Mason. email: psa@pembury.kent.sch.uk

PEMBURY SCHOOL HOUSE NURSERY

Teacher in charge: Rachel Teigen. Tel: 825580

PEMBURY SHORT MAT BOWLING CLUB

Arthur Storey. Tel: 822509

PEMBURY SOCIETY

Chairman: David Hanes. Tel: 823174

PEMBURY TENNIS CLUB

Mrs S. Smith, 2 Ridgeway. Tel: 822405

PEMBURY U3A

Membership Secretary: Andrew Richardson. Tel: 824012

PEMBURY UPPER AND OLD CHURCH

Rev'd. Douglas Robertson. Tel: 824761

PEMBURY VILLAGE MARKET

Suzanne Leviton. Tel: 07927 713256

Jean Tyler. Tel: 01732 357820

PEPENBURY

Principal: Mr Roger Gibson, Cornford Lane. Tel: 822168

POLICE COMMUNITY SUPPORT OFFICER

PCSO Nick Brown. Tel: 07772 226001

ROTARY CLUB OF SOUTHBOROUGH & PEMBURY

Secretary: Nigel Stratton. Tel: 822936

ROYAL NATIONAL LIFEBOAT INSTITUTION

Peter Chartres, 54 Woodhill Park. Tel: 823759

SCOUTS, CUBS AND BEAVERS

Michelle Usherwood. Tel: 822020

SCOUT & GUIDE HQ MANAGEMENT TEAM

Michelle Usherwood. Tel: 822020

ST. ANSELM HALL ENQUIRIES

Janet Ditchett. Tel: 822586.

ST. PETER'S MOTHERS' UNION

Secretary: Tina Walters. Tel: 822545 (after 4pm)

TABLE TENNIS CLUB

John Burleton. Tel: 823250

THE ORDINariate OF OUR LADY OF WALSINGHAM

Fr. Ed Tomlinson, 31 Henwoods Crescent. Tel: 825009

TOWN & COUNTRY (HIGH WEALD HOUSING)

Housing manager: Stephen Aspinall.

Tel: 0845 8731 321

TREE WARDEN

Hugh Boorman. Tel: 823068

TUNBRIDGE WELLS ACCESS GROUP

Gill Pavely. Tel: 822605

TUNBRIDGE WELLS & DISTRICT VICTIM SUPPORT SCHEME.

Tel: 513969

VILLAGE HALL

Manager (bookings): Karen Tamblyn. Tel: 07983 228181

WOMEN'S INSTITUTE

Evening: Mrs Gillian Williamson. Tel: 01892 822 577

Email: pewisecretary@gmail.com

01892 825505



HENRY PAUL FUNERALS

Contemporary and Traditional Services

HENRY PAUL FUNERALS is a traditional family owned funeral directors purposely dedicated to providing distinct levels of service, choice, dignity and care to bereaved families in Pembury, Tunbridge Wells, Tonbridge and surrounding areas.

24 Hour Emergency Service • Home Visits • Private Chapel of Rest
Full Fleet of Modern & Vintage Vehicles • Floral Tributes • Catering
Memorial Masonry • Pre-paid Funeral Plans • Repatriation



Golden Charter
Funeral Plans

Perfect Choice
Funeral Plans

HEAD OFFICE

10 High Street, Pembury,
Tunbridge Wells, Kent TN2 4NY

01892 825505

pembury@henrypaulfunerals.co.uk

FUNERAL DIRECTORS

49-51 London Road, Southborough,
Tunbridge Wells, Kent TN4 0PB

01892 458338

southborough@henrypaulfunerals.co.uk

FUNERAL DIRECTORS & MEMORIAL SHOWROOM

88a Shipbourne Road,
Tonbridge, Kent TN10 3EG

01732 605002

tonbridge@henrypaulfunerals.co.uk

www.henrypaulfunerals.co.uk