

PEMBURY VILLAGE NEWS

Issue 138
SUMMER 2009

CONTENTS

Editor's Notes	3	Horse Riding	25
New Councillor – Melanie Karpinski	3	Green Gardening – Living With	
Parish Chair's Report	5 & 7	Wildlife	27 & 28
Pembury Tennis Club	7	Spring Arrived – Eventually	28
Pembury Village Quiz	9	Pembury Football Club	29
Pembury Trees – Lime Trees	9	Scouts & Guides Hall Management	
Support Our Post Office	11	Committee	29
Wanted: New Bowlers	11	Library Opening Times	30
Hospice in the Weald	11	Wealden Wine	31 & 32
Snippets	13	Pepenbury Events	32
Bishop's Visit to Pembury	15	The Day The Automobile Association	
My Plot	15	Came to Pembury	33
Pembury Village Website	16	Crime In Pembury	34
Pembury's Got Talent	17	For Your Diary	35
Pembury Athletic Youth Football Club	17	Rosie's Recipes	36 & 37
Pride in Pembury and Entry Form	19 & 20	Bats	37
Wildlife In Pembury Of Old	21	Church Times	37
Dick Miles – Obituary	23	Your Representatives	38
Pembury Cricket Club	23	Village Organisations	39

Cover photograph by Louise Fowlie.

Editorial Working Group:

Louise Fowlie (Editor), Paul Barrington-King, Rosie Bass, Masha Bayles, Rick Bayles, June Crowhurst, Janet Ditchett, Melanie Karpinski, Sally Osborn and Kathy Wallwork.

Please note: The Editor's decision is final on whether or not to publish any item submitted. The Editor reserves the right to edit (that is to cut, précis, alter, correct grammar and spelling) any item published.

PEMBURY VILLAGE NEWS

Editor: Miss Louise Fowlie
c/o 6 The Grove, Pembury TN2 4BU
Distribution enquiries: Parish Clerk 823193
Email: pvn@pembury.org
Website: www.pembury.org

Pembury Village News is published four times a year by the Parish Council, but the views expressed in the magazine do not necessarily represent official council opinion or policy.

Typeset and printed by
Folderspring and Heronswood
Press, Tunbridge Wells.

EDITOR'S NOTES

WELL, THE summer is most definitely around the corner, and our village is blooming. In this issue you will find an entry form for the new Pride in Pembury and Images in Pembury competitions which are being run by the Parish Council. This is your chance to capture your pride in the village and show it in bloom. See page 19 for more details.

I've had the privilege to attend several events in the village recently, such as the village quiz. We are also lucky to have so many events planned for the summer months; the musical picnic on 20 June and It's a Knockout in September to name just two. More events are on the diary page, page 35.

This issue brings me to a complete calendar year of working on this magazine, I can't believe how quickly it has passed! Of course I couldn't have got even this far without all of the hard work from my editorial team and I would like to thank them all for their continued support and help. So here's to another year! I hope you continue to enjoy the selection of articles we bring you and the variety of village events covered. I am always keen to hear your views and comments; please do not hesitate to email me on pvn@pembury.org, or write to me at the address on the inside front cover. I look forward to hearing from you.

Louise Fowlie, Editor

NEW COUNCILLOR – MELANIE KARPINSKI

HELLO, MY name is Melanie Karpinski. I am a freelance translator and moved to Pembury a year ago after returning to England from Switzerland. I have three children in their twenties, two cats with attitude and a free-spirited King Charles Cavalier.

I was immediately struck by the sense of community that there is in the village and the amazing amount of activities that are on offer on a daily basis. Moreover, I am bowled over by all the beautiful countryside that is right on our doorstep, whilst knowing that we are just a stone's throw from London.

I feel I am very lucky to have found such a lovely place to settle in and should like to actively contribute something to the community as a whole. I look forward to my role as councillor and hope I can really be of use to the village.



COPY FOR NEXT ISSUE

Any news items or articles for possible inclusion in the next issue of this magazine must be forwarded to the Parish Office, c/o 6 The Grove before
1 August 2009.

If you use a computer to type your article, it would be extremely helpful if you could send it (and photos) in by e-mail to pvn@pembury.org



BarnesKingsnorth



Please call in to discuss all your property requirements in a relaxed, friendly environment where we will be pleased to assist you.

16 High Street, Pembury TN2 4NY.

Tel: 01892 822880. Fax: 01892 825250

Email: pembury@bkea.co.uk

ALL OUR PROPERTIES ARE AVAILABLE TO VIEW ON THE INTERNET
24 HOURS A DAY, 365 DAYS A YEAR

www.bkestateagents.co.uk

Other offices at

TONBRIDGE
141 High Street
Tonbridge, Kent TN9 1DH
Tel: 01732 771616

LETTINGS:
141 High Street
Tonbridge, Kent TN9 1DH
Tel: 01732 771616

Burtons Pembury's Solicitors

★ Prompt Efficient Friendly Service

The Tyled House
23a High Street
Pembury, Kent TN2 4PH

Tel (01892) 824577

PARISH CHAIR'S REPORT

I AM REALLY excited by this year's planned projects for the Parish Council. After concentrating for the last few years on the Recreation Ground, there was a huge need to look at the village as a whole, and to make a concentrated push to conserve our Parish and its beauty. There are areas of the village that have become neglected and overgrown, and we need to retain our entire village.

With the help of the Borough, hopefully the High Weald Project, and our own passionate conservationists in the Parish, Sally Osborn as Chair of the Environment Working Group and with the expertise of Hugh Boorman and Rick Bayles, they have a huge task on their hands but one that will be so rewarding for the village. We know this project

will be well received by many of you, since, as we have a village to be proud of, we need to safeguard it for the future. In the next few months we shall need volunteers, once we have identified where to start. So please let us know if you are interested in volunteering to protect our village.

Now that, at long last, we have a full Parish Council, we will be able to cover more areas of the village and each councillor will be able to overview an area.

Pride in Pembury is being launched this year. The Parish Council are running their own competition for gardens, allotments, etc. When I have judged it in the past, it has always been a joy to see the pride that is taken to attain beauty and perfection, so hence Pride in Pembury. And of course we shall need your help, so please enter and make this a bumper year. We will also have a photographic competition for those who do not have green fingers! This will be titled Images of Pembury, and all pictures will be displayed so we can all see the fabulous talent we have in the village. So, please fill in your entrance forms and good luck!

The adult keep-fit equipment will be installed by the summer in the recreation ground and the reclaimed land by the Football Pavilion will be done.

The picnic on the green in June is a time to relax and meet old friends or to make new ones. This year's is one to look forward to as we have local musicians, so please keep the evening of 20 June free.

It's a Knockout for the youth is a keenly fought competition and it's fantastic to see all the youngsters in the village competing for the challenge cup. A huge thank you to all the youth leaders who, with their teams, come up with the most amazing range of games and help to support and encourage our youth.

I would like to say thank you to everyone who gets involved with our initiatives, whether it be Parish Council, Borough, County or our many partners in Pembury. We never take your help for granted, it is all so appreciated.

Obviously no Chair of a Parish Council is complete without the support of her colleagues. I have a wonderful team of dedicated councillors, who are so willing to be proactive. The chairpersons of all the working groups have to be commended for the hard work of all their



continued on page 7

ACCIDENT REPAIR SPECIALISTS.		ALL MECHANICAL WORK AND SERVICING.
ALL INSURANCE WORK UNDERTAKEN		MOTs ARRANGED
COME TO THE PEOPLE WHO CARE – FRIENDLY, COURTEOUS SERVICE		
Tel: 01892 822761	<i>Family Owned Business</i>	Fax: 01892 824591

West Kent Shooting School		
New Hay Farm, Old Hay (off Pearsons Green Road), Paddock Wood, Kent TN12 7DG		
A PREMIER PLUS GROUND We offer the most comprehensive range of Clay Pigeon Shooting in the South East		Practice Facilities in English Sporting • Skeet Gun Fitting & Lessons Corporate Days • Gift Vouchers Fully Equipped Clothing and Accessory Shop
Events Young Shots Days • Have a Go Days Charity Events • Ladies Days Check our website for dates		
Open Monday to Friday from 10 am to 5 pm Tel: 01892 83 4306. info@wkss.demon.co.uk. www.wkss.demon.co.uk		

SIRA CHAPMAN BABTAC
BEAUTY & HOLISTIC THERAPIST
Comprehensive range of treatments available, including –
✿ MANICURE ✿ PEDICURE ✿ MASSAGE ✿ LASH & BROW TINTING ✿ WAXING ✿ PRESCRIPTIVE FACIALS ✿ EYEBROW SHAPE
Please ring for any enquiries or treatment details on:
Pembury (01892) 822479

When you get to a certain age you've earned the right to: have an afternoon nap, listen to The Archers, have someone else do the housework, get taken out shopping or simply enjoy staying at home... And they say it's a dog's life.	
TerraBlu provides domiciliary support in Pembury and Tunbridge Wells. The company has an 'excellent' rating from CSCI (Commission for Social Care Inspection) and provides services to Private, Social Service and Kent Card clients.	
Call: 01892 529429 or email: julia.Mead@terraflu.co.uk	
 Taking care... www.terraflu.co.uk	

PARISH CHAIR'S REPORT – continued

projects, but also the commitment of the councillors old and new, who help each other make such valuable contributions to our Parish Council.

Behind every Parish Council is a dedicated team who ensure we do our jobs properly. Our clerks have a very high standard of work and ethics. The work load has increased over the last few years but they handle it with confidence and experience.

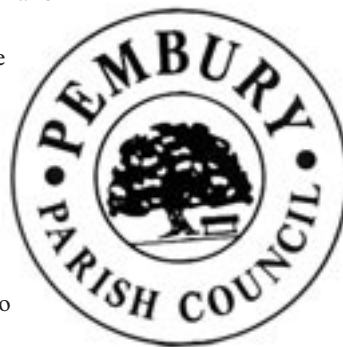
Our groundsmen have a huge parish to cover but they do all so proficiently, to keep our village clean and tidy.

The PVN goes from strength to strength under the capable hands of Louise and her editorial group and we wish it to continue to do so. It's a magazine to be proud of.

Kevin Lynes, our County Councillor, and Paul Barrington-King and Mike Tompsett have all contributed in so many ways to make our village a good place to live in.

Lastly I would like to thank all of you who live in our village. You make it what it is today, which determines its future and makes it an embracing village to be part of.

June Crowhurst



PEMBURY TENNIS CLUB

PEMBURY TENNIS Club is a small, friendly club situated in the Recreation Ground, Lower Green Road. We play Wednesday and Friday evenings from 6pm during the summer and Sunday mornings from 10.30am all year round. We play mainly mixed doubles and provide the tennis balls. We are always pleased to welcome new members, so dust off your racquet and come and join us. If you are interested and need any further information, please contact Kim Phipps on 824224 or Sheila Smith on 822405. We hope to see some new faces this summer.



Parish Tennis Courts

If you would like to play tennis on the courts in the Recreation Ground, you can buy a permit for one month (£30), two months (£50), or even a year (£75). These are available from the Parish Office; phone 823193 or email clerk@pemburypc.kentparishes.gov.uk.



PEMBURY PAVILION

NOW AVAILABLE FOR HIRE

Brand New Facilities in the Recreation Ground
Suitable for Children's Parties, Social Groups, Sports Events, Meeting and more . . .

For further information contact
Carole Edser on 823643 or pemburypavilion@msn.com

David Salter

Gas & Plumbing Services

Central Heating Installations & Upgrades

Boiler & Cylinder Changes

Breakdowns, Connections & Servicing of all gas appliances

15 Years experience with British Gas

Corgi Registered



EMERGENCY CALL OUTS – MOBILE 07733 107333 – HOME 01892 824481



The Old Chapel
Kryisia Ritchie BSc (Hons) Ost

Registered Osteopath

Babies, children, adults
and during pregnancy

Tel: 01892 826 133

The Old Chapel | Hastings Road | Pembury | Kent TN2 4JS

Heritage New Drives

Block Paving Specialists

www.heritagewdrives.co.uk

Tel: 01892 723849 Mobile: 07785 112583

Thinking of a new drive?

Free Estimates – Give us a call

Paydon, Petteridge Lane, Matfield, Tonbridge, Kent TN12 7LX

PEMBURY VILLAGE QUIZ

TWENTY-ONE TEAMS gathered in the village hall on Friday 8 May to take part in the Village Quiz. The quiz was organised by, and in aid of, the Scouts and Guides, and is a firm fixture in the village calendar. Many of the village's organisations were represented by the teams; each hoping to win the Parish Council Cup and a cheque for £300 to donate to a charity of their choice.

Keith Merrin was the quiz master for the evening, and the dedicated team from the scouts and guides kept the evening running very smoothly.

The themed rounds (geography, the Bible, novels, toys and games, places around England, pop songs, adverts, English history, what's on the table and pot luck) were interspersed with quick-fire rounds with a long round on anagrams of chocolate names and brands.

The scores were close all through the night, but the final winners were EurekaMania, the

team from the U3A organisation, with Graduated Rods (last year's winners, formerly "The Pembury Plonkers") in second place and the Black Horse in third place. The winning team kindly donated the cheque to the Scouts and Guides, which boosted the profit from the evening up to over £800. This will greatly help them with their "daylight project", aiming to get windows into the building, which will make a huge difference.

Janet Ditchett, the former secretary of the Scout and Guide Management Committee was presented with a gift and thanked for all of her hard work over the many years.

The evening was very enjoyable and thanks are due to all those who came and supported the event, kindly donated raffle prizes, and those who helped to organise and run the evening.

The Scouts and Guides look forward to seeing you all there again next year!

Editor



PEMBURY TREES – LIME TREES

THIS TREE is in Lower Green Road, on the corner with Ridgeway, down towards the school. It is a Broadleaved Lime or Linden tree (*Tilia platyphyllos*).

There are other Limes around the village and most of them have the tell-tale huge nest of twigs around the bottom of the trunk. There's a few along the northern side of Hastings Road, which suggests they may have been planted around the same time. The first one is next to the petrol station and the last outside Bladerunners the hairdressers. Maybe there used to be more?

Limes smell gorgeous in midsummer when they're in flower and the bees in them can be heard from a distance. However, the downside of this sweetness is the aphids that rain 'honeydew' down onto cars parked beneath, making them gooey and then filthy, as all the dust sticks. A lovely street tree, prior to the invention of the motor vehicle!

Caroline Mazzezy



G. F. GROVES

YOUR FRIENDLY LOCAL BUILDER

**CARPENTERS
JOINERS**

**BUILDING
CONTRACTORS**

EXTENSIONS/CONVERSIONS/NEW-BUILD

**PLANNING SERVICE AVAILABLE
PURPOSE-MADE JOINERY**

FREE ESTIMATES • FAST SERVICE

Telephone (01892) 724424

www.apexaccountancy.com

Orchard Business Centre, Badsell Road,
Five Oak Green, Tonbridge TN12 6QU



CHARTERED CERTIFIED ACCOUNTANTS

PADDOCK WOOD

01892 835738



- ACCOUNTS • BOOKKEEPING • VAT • SELF-ASSESSMENT
- NEW BUSINESS START UPS • FREE INITIAL VISIT
- FIXED FEES ON OUR WEBSITE

SUPPORT OUR POST OFFICE

MANY OF YOU will have noticed the roadworks along Hastings Road over the last few weeks. This might have caused some difficulties with parking and impacted upon the customer base at the Post Office. Both John and Linda, along with the team, will have to endure this predicament for some further months in the summer. Please help us support our local Post Office during this difficult time by continuing to use the excellent services that they offer Pembury.

Paul Barrington-King

WANTED: NEW BOWLERS

THE OUTDOOR bowling season has got off to a good start with our bowling green showing the benefit of the care and attention given to it over the winter months. With an improved green and a clubhouse the envy of many bowling clubs, we are looking to add to our membership. By the time this is published, we will have held our "open day" for anyone interested in having a go at bowling. You will, however, find members of the club having a roll-up every Friday afternoon throughout the summer and we will welcome new faces. Please wear flat shoes (trainers permitted).



During the season our friendly and league matches with other clubs, together with internal club competitions, will be taking place and anyone is welcome to come and watch. The flags will be flying on 31 May when we will be holding our annual Open Triples Turnaround Tournament with competitors coming from as far as Chessington and Brighton.

Barbara Scholten

HOSPICE IN THE WEALD

HOSPICE IN the Weald have arranged a number of fundraising events over the summer months. For more information on any of them, please phone 820508.

Friday 19 June – The Hospice in the Weald Moonlight Walk on Friday 19 June will be one of the highlights of the 2009 fundraising calendar. The sponsored walk will start at 10pm from Hospice in the Weald and follow a circular route along well lit roads towards Tunbridge Wells. Walkers will return to the Hospice to raid the larder for chocolate treats and hot chocolate and marshmallows. Please phone 820508 for entry forms.

Friday 26 to Sunday 28 June – There will be an art exhibition and sale of original paintings

and prints donated to the Hospice in the Weald by local and national artists, with all proceeds going directly to the running of the Hospice. Entrance is free.

Friday 26 June 10am to 4pm, Saturday 27 June and Sunday 28 June 11am to 4pm at The First Floor Studio, Hospice in the Weald Furniture Store,

Tunbridge Wells Trade Park, Longfield Road, Tunbridge Wells, Kent TN2 3QF

Sunday 2 August – Hospice in the Weald Wacky Races, 11am to 4pm at the Land Registry, Tunbridge Wells.

Sunday 20 September – Hospice in the Weald 10K Run and 1K Fun Run. Starts 10am at Lower Cricket Ground, Tunbridge Wells.



WALROND FULLER

CHARTERED BUILDING
SURVEYORS

01892 709600

www.walrondfuller.co.uk

We have returned to the
Village and are now in
The Granary at Pippins Farm.

Come and discuss your
property issues.

**STRUCTURAL SURVEYS
ADVICE ON LISTED AND
PERIOD PROPERTIES**

BLADERunners

Cut and colour specialist



All Hairstyles And
Photography Created By
Bladerunners Artistic
Team



43 Hastings Road,
Pembury,
Kent,
TN2 4PB



Tel: 01892 824420

Lucy's
BEAUTY STUDIO
HEALTH AND BEAUTY

- Facial Treatments
- Body Treatments
- Massage
- Hands & Feet with Nailtiques
- Make-up
- Beauty Treatments
- FREE Parking
- 10% OFF Your First Treatment When You Mention This Advert

Please give me a call on -
01892 820444

Lucy Pifford L.A. & L.L.C. LONDON
Rebecca Davis Hair
11, Tennyson Road, Tennyson Park, Kent, TN2 4PB
www.lucysbeautystudio.co.uk



Citizens Advice Bureau
**FREE CONFIDENTIAL
ADVICE**

Pembury Library
Alternate Thursdays
9.30 to 11.30am

SNIPPETS

DOWNINGBURY FARM

Sunday 7 June, Downingbury Farm is having an open day with strawberries in full flow and some special activities, including a barbecue. Entrance will be free with contributions to the Hospice in the Weald. Contact Peter Jervis on 824282 for more information.

Pippins Farm will be holding an event in October, details of which will be in the Autumn issue of the News.

STRAWBERRY TEA

Come to tea at the Old Church on Sunday 28 June from 2.30pm to 4.30pm. Enjoy strawberries and cream, home-made scones and cakes and listen to the music of the Wealden Ramblers in a country churchyard (if wet, inside the church). All welcome.

PEMBURY HOSPITAL

Work on the hospital is progressing extremely well – so much so that it's difficult to keep up to date with the development through the quarterly PVN. To make sure you have access to the most up to date information available we've created a special web-page on the Pembury website. Go to www.pembury.org and click on the Pembury Hospital Building Project headline on the right hand side of the page. You'll be able to view regular monthly updates and the latest photos of the site.

Remember; if you don't have access to a computer at home you can always make use of the facility at our own library.

ST PETER'S HOLIDAY CLUB

St Peter's is looking for children aged 5 to 11 to join in an adventure as they join with Razzamatazz Robots for four days of fun. This year's holiday club runs in the Upper Church daily from Tuesday 25 August to Friday 28 August, 10am to 12.30pm. The cost is £3.50 per session. Registration forms can be obtained by calling 824761, by emailing robots@pemburychurch.net or you can pick one up from the Upper Church porch.

PRESIDENCY OF KENT ASSOCIATION

On 1 April, David Coleman took over the Presidency of Ken Association of Local Councils. David has been an active member of the KALC Exec for many years. He served a three-year term as Chairman from 1997 to 2000, and was elected as a Vice President in November 2000. During the last few years, David has held a number of representative positions for KALC and, at present, is Vice Chairman of the County Strategy Group and a member of the Kent Safer and Stronger Communities Group. Bob Scruton, the previous President is greatly thanked for all of his work over the last twelve years.

CAMP BEAUMONT

Camp Beaumont will be operating children's activity day camps at Kent College, Pembury, during the school summer holidays. The camps are open from Monday to Friday, 8am to 6pm. They are OFSTED registered and all the staff are extremely well-trained and qualified. Activities range from swimming and archery to tennis, basketball and treasure hunts. Prices start at £40 per day. For more information, phone 01263 823000.

Orchard Walk - May 2009

Pippins Farm enjoyed sunny skies for an apple blossom walk on Saturday 2 May. A short tour of the orchards in various states of bloom allowed visitors to see the different varieties and to discuss the changes during the season. Some trees had finished flowering whilst others such as Ellisons Orange were in full bloom and the latest variety, Crawley Beauty, was only just breaking bud. Tips for pruning and garden growing were offered by David Knight from the farm.

After a short tour, the walkers enjoyed sampling the new Pippins apple juice. Generous donations were made to the Hospice in the Weald, and David Knight wishes to thank everyone who came along and supported the event.

PEMBURY DENTAL SURGERY



Nelis du Plessis B.Ch.D. (Pret)

67 Hastings Road, Pembury, Tunbridge Wells, Kent TN2 4JS

Tel: (01892) 823044

Committed to Quality Dentistry

G-Tech Computers

Home and Home Office PC Support



Contact Details:

Pembury - 01892 823994

Mobile - 07929 903126

info@gtechpcsupport.co.uk

*Home Visits or Free Collection & Delivery
Full Support Services for the Home & Home Office User
No Fix - No Fee & No Call out Charge
Virus Detection, Removal & Prevention
Upgrades to your Existing PC
Broadband & Wireless Network Installation
New PC System Sales
Servicing and Preventive Maintenance*

Steffan Keily

FOR ALL YOUR FENCING REQUIREMENTS



All types of fencing supplied and fitted
Close board, panels, palisade, post & rail, gates

FREE ESTIMATES FULLY INSURED
HOME: (PEMBURY) 01892-824048 MOBILE: 07941138060

P.L.H. DECORATING

Interior - Exterior
Painting & Decorating

01732 773414

Mobile 07941 068717

E-mail: plh_decor@sky.com

BISHOP'S VISIT TO PEMBURY

THIS YEAR is very special for the parishioners of St. Anselm's Catholic Church; it is the 900th anniversary of St. Anselm and the church is celebrating it in style.

On St. Anselm's feast day, 21 April, a special Mass was held and Bishop John Hine was invited to preside. He expressed his delight that such a milestone anniversary was being recognised and celebrated in such a wonderful way. During his homily, Bishop John reminded everyone that Anselm was one of three Archbishops of Canterbury who have been canonised as saints and has contributed so much to the history of the church.



After celebrating Mass, everyone enjoyed a generous buffet provided by the parishioners and an opportunity to talk to the Bishop.

Fr. Liam Gallagher, Parish Priest, said "It was fantastic to see everyone celebrating together on this momentous occasion in our year." The church will be continuing the celebration of this anniversary throughout the year with

various other events planned, including a special parish pilgrimage to Canterbury Cathedral in June, where they have been granted special permission to celebrate Mass.

Editor

MY PLOT

IN NEARLY twenty years I have never known the allotments so busy! There is so much going on and there are so many new faces, it's lovely.

Two years ago there was a celebration because all the plots were taken, although there were, in fact, several more that could have been 'brought back' into use. This photo (from Google Earth, printed in the Winter 2007 magazine), showed how things were at the time. As you can see, about one quarter of the land was uncultivated.

Now the picture would be quite different. Lots of redundant plots have been reclaimed and the council has marked out and sprayed rectangles of the correct size, ready to rent out to new tenants. Once they are cleared, this will make them perfect. Taking on a previously-rented plot may have the advantage of a few pre-grown fruit and veg, but there would also be a lot of weeding to do. So, hurry up and book one of those fresh fields now!! You can see a much more up-to-



date photo using www.maps.google.uk. Put it onto satellite view and zoom in. I think the image was captured late last summer.

Allotments

If you would like to rent an allotment off Woodside Road, there are still some plots available, and the price is very reasonable. It costs just £20 for a whole plot and £10 for a half plot. Contact the Parish Office for more information on 823193 or email clerk@pemburypc.kentparishes.gov.uk.

Caroline Mazzey

PEMBURY VILLAGE WEBSITE

THE PEMBURY Village Website (www.pembury.org) recently celebrated its 10th anniversary of existing on the internet. The website was launched in about November 1998, although the precise date is a little bit lost in the mists of time! Originally the address was www.pbss.demon.co.uk/pvn/, not exactly easy to remember. In about the year 2000 it became www.pembury.org.uk and then about a year later www.pembury.org.

The original site started off as a very simple Pembury Village News site compared to the village site we now have. It's slowly evolved over time, been expanded, modified and redesigned, although there are recognisable elements of its original design still present in the current version of the site.

Steve Morton has been its editor since its inception and continues to add new material as it becomes available. I've met a few people who have decided to move to Pembury after viewing the Pembury website, which was a bit scary when I first heard it; something I was doing as a hobby has been used to make life-changing decisions!

The site aims to cover as much of life in Pembury as possible, a central point of information about the various organisations and businesses, as well as highlights of the Pembury Village News. There is also a section on the history of Pembury containing scans of maps and photographs. A lot of the content has been donated to the site.

The scans of the old postcards have been donated by Glenn Reay who actually lives in Yorkshire, although he has visited the village in the past. I'm attempting to take similar modern day photographs of the same scenes in the postcards, but it's not as easy as I originally thought it was going to be, so it's a 'work in progress' project. The historical maps are from the collection of Tony Nicholls, who came to live in the village a few years ago.

There is a Pembury Community Online Forum, which started in 2005. The forum can get a little lively at times, although the number of active users has always been fairly low. Several people on there have got to know each other on a face-to-face basis, as well as online. 'Meetings' have taken place at the Camden to exchange thoughts and views and to put the world to rights. The forum is open to anyone and membership is free. There is a link to the forum from the home page of the website.

Time has not stood still in Pembury. Back in 1998 there were only one or two other Pembury websites, the others being associated with businesses, but not in our village. Now when you pop Pembury into Google you will be flooded with other sites. A lot of the organisations in the village have their own sites, sports clubs, recreation clubs, and businesses. I welcome 'link exchanges' from organisations and businesses in the village. Please contact me with your link.

So, here's to the next 10 years.

Steve Morton



PEMBURY'S GOT TALENT

THE LEVEL of interest for our first Art and Craft Exhibition held at St. Peter's Upper Church at the beginning of May was over whelming. Display space had to be increased with a marquee! Exhibits ranged from 2D art work through to installations. Both visiting public and exhibitors are looking forward to the next one, and planning has already started for May 2010.

Carole Wakeford

PEMBURY ATHLETIC YOUTH FOOTBALL CLUB

ON 9 MAY, Pembury Athletic Youth FC held their end of season awards day at the Pavilion.

The club has had another enjoyable season, and now has over 190 active members aged between 4 and 17.

During the season, Luke Carpenter, Under 14 Coach, completed his FA Level 2 Certificate in Coaching following three assessments and a large number of days in and out of the classroom with the Football Association. Well done, Luke!

The club started a new Under 5 age group and at the season end had 12 children registered with the club.



The Pavilion has started to form an integral part of village life. It is used every match day, when there can be over 100 children and parents using the pavilion's facilities, along with private hire available for businesses and usage by local residents for birthday parties. The Pavilion even staged its first televised football match, an England World Cup Qualifier!

Moving forward to next season, the club will have nine teams entered into the Crowborough & District League, and a new Under 14 team entered into the Tandridge League respectively.

The awards were presented, at our awards day, by the respective Year Group Coaches as follows:

Under 7 – Clubman Award: Matthew Rackliffe; Merit Awards: Dylan Salter, Dante DiNardo, Matthew Rackliffe.

Under 8 – Clubman Award: Luke Hunton; Merit Awards: Alex Wood, Louis White, Reece Reddick, Stephen Kromm, Harrison Coe.

Under 9 – Clubman Award: Benjamin Morley; Merit Awards: Thomas Slater, Elijah Lewis, Matthew Burleton.

Under 10 – Clubman Award: Tony Osbourn; Merit Awards: Lauryn Underhill, Christoph McCleod, Jack Sheer.

Under 11 – Clubman Award: Louis McKeeve; Player of the Year: Edward Leonard; Merit Awards: Marc Chappel, Matthew Peckham, Dan Payne, James Vernon.

Under 13 – Clubman Award: Bryn Monkman; Player of the Year: William Baker; Merit Awards: William Mawson, Luke Sammons

Under 14 – Manager's Player of the Year: Tom Philpot; Player's Player of the Year: Ashley Waterman; Clubman of the Year: Mark Smith; Most Improved Player: Jay Lawrence.

Under 18 – Clubman Award: Sammy Lee-Balcombe; Merit Awards: Oliver Bryant, Craig McClay, Alec Rieck.

Matt Foley, Club Secretary



Broadfeed^{LTD}

Feeding All Creatures Great And Small

Animal & pet feeds, saddlery, clothing, accessories, bedding and much more.

• Free & Easy Parking • Helpful Staff • Friendly Advice • Delivery Service

**6-7 Spa Industrial Park, Longfield Road,
Tunbridge Wells, Kent. (Opposite Kwik Fit).**

Tel: 01892 532619

www.broadfeed.co.uk

Open 8.00 – 5.30 Monday to Friday, 8.30 – 4.00 Saturdays

FREE ESTIMATES

● EXTENSIONS ● HOME IMPROVEMENTS ● DECORATING

Contact

Alan Clarke of


CWC BUILDERS LTD

13 High Street, Pembury TN2 4PH

Tel: 01892 823932

E-mail: cwcbuilders@aol.com

Company Reg. No. 6392201



Pembury Parish Council presents

Pride in Pembury

NEW annual garden and photographic competition

**Enter by July 31st 2009 and you could win
one of the coveted cups and an invitation to
the winners' tea at the Pavilion.**

*And, the top three entries for the photograph competition will have
their photograph on display in the village for a whole year.*

Horticultural Categories:

Best Front Garden - Best Hanging Basket or Container
Best Commercial Frontage - Best Allotment
Best Container planted by a Child or Group of Children

**Photographic entries
should reflect
"Pembury Life".**



Entry Form

Please complete this form and return it to:
Pembury Parish Council, 6 The Grove Pembury, TN2 4BU
or include your information on an email to
clerk@pemburypc.kentparishes.gov.uk

Category of Entry (please tick)

- ☐ Best Front Garden (*domestic dwellings only*)
- ☐ Best Hanging Basket or Container (*domestic dwellings only*)
- ☐ Best Commercial Frontage
- ☐ Best Allotment
- ☐ Best Container Planted and Maintained by a Child
or a Group of Children (*aged up to 16*)
- ☐ Best Photograph of "Pembury Life"
fix your photograph to this form - sorry no photographs by email

Please complete in BLOCK CAPITALS

Name of Entrant: _____

Name of person nominating entry (if different from above):

Full Address of entry: _____

**Forms must reach the Parish Office by noon on
Friday 31st July 2009**

The Small Print: The competition is not open to Parish Councillors or Parish Council employees or their close families. Garden entries must be within the boundaries of the civil parish. It will not be possible to return photographs. Judges will not be permitted to discuss entries. The date of judging will not be published in advance. The decision of the judges is final and no correspondence will be entered into. The names of winners will be published in Pembury Village News at the first possible opportunity. The winner of each category must be willing to participate in a publicity photograph. Entry to the competition is deemed acceptance of these rules.

WILDLIFE IN PEMBURY OF OLD

IN RESPONSE to one of my articles about butterflies, I received a letter sent by Mr Robin Kenworthy, who lived in Pembury at the time of the Battle of Britain.

The letter is long and nostalgic and it shall be split into two parts, the next of which will be published in the Autumn issue 2009.

Hugh Boorman

Part One

I was interested to see the article on butterflies and moths and making the garden insect friendly in one of your issues.

I lived in Pembury from the time of the Battle of Britain until going into National Service in 1953. We watched the battle from Kings Toll Farm, which is where we went hop-picking. We lived at Beverley, then in Fairlight, Stanam Road. My parents cultivated the strip of land from Beverley to the back of the Henwood Green Road houses, but ownership of the plot has since been broken up. We had a couple of dozen chickens and rabbits to augment the rations- as did several others in the area. We also had guinea pigs as pets.

There were pigs and chickens over on the Woodside allotments, and this is also where we gathered Beech nuts and learned how to cycle. We used to go to the woods to find the Sweet Chestnuts, which were our favourite. I remember there being pigs on Henwood Green Road, where the footpath cuts across to Belfield, and also in Baggasons nursery at Woodgate Corner. I can remember the steam traction engine and threshing machine parked there.

I recall seeing Woodpeckers in the trees at Beverley, and seeing men with shotguns shooting the rabbits, as the corn was cut and stooked in the field opposite. After it had been taken in, we would go and gather the dropped ears and the loose straw, for the chickens.



Butterflies were particularly attracted to a vacant plot at the top of Stanam Road, with Brambles, Thistles, Nettles and Ragwort. Cinnabar and Burnet moths were abundant here, as well as on the wide verge at Bo-Peep. We had a butterfly-friendly garden; my Dad was a member of the Amateur Entomological Society, and most summers I had half a dozen breeding cages or muslins nets in the garden- we had lots of Small and Large White butterflies. In season there were always Tortoise Shell, Red Admiral, Peacock, Painted Lady (often migrants) and Common Blue. However, Comma, Brimstone and Wall Butterflies weren't so commonly found.

In many places in Pembury, you could sometimes also find Grayling, Gate Keeper, Meadow Brown, Ringlet, Small Copper and Small Skipper.

In the fields and woods along Kings Toll Road, both of the Pearl Bordered Fritillaries could be found. If one went through the wood from the old A21 into the fields at the bottom, there were Silver Washed Fritillary and White Admirals. This walk came back through Kippings Cross.

To be continued . . .

Dawn Hodgson
Chiropodist

MSSCh MBChA

- Professional Advice and Friendly Care
- Diabetic Assessment & Maintenance
- Verruca Treatment, Natural Remedies or Chemical
- Ingrowing Toenail Care
- Treatment for Fungal Infections
- Day and Evening appointments available



7 Greenleas, Pembury TN2 4NS
Tel: 07761 583 756
01892 824916

Full range of
Footcare products,
including 100% Natural
and Diabetic Friendly

Discounts for over over 70s

HSA 50% refund available

Foot Health Care – Home Visiting Service

- ❖ Nail Trimming ❖ Ingrown Toenail ❖ Athletes Foot ❖ Callus & Corn Removal
- ❖ Verrucae & Wart ❖ Fungal Nail ❖ Reflexology

CARMEL DUNMALL

RGN, RM BSc(Hons), MAR MCFHP MAFHP – Foot Health Practitioner

For a home visit call

07969 080860



Friendly professional service for all your foot care needs.

Surgery and home visits available. HPC registered.

Reduced fees for over 70s at surgery appointments.

67 Hastings Road, Pembury, TN12 4JS.

Surgery: 01892 822855 Mob: 07901922901

DICK MILES – OBITUARY

RICHARD GORDON MILES
12 April 1925 to 12 March 2009

DICK MILES was a long serving member of the Parish Council, having been elected in 1961, when he was a councillor for eight years, and then again in May 1979 for a further 18 years. It was during this second period, from 1979, that he was initially Vice Chairman of the Council and then Chairman for the period 1987 to 1994.

His parents lived in Pembury; Dick went to school locally and then, following his marriage to Frances at the Old Church, Pembury in 1949 they made their home at Fletchers Farm after very brief spells away at Matfield and Leigh.

Dick will forever be remembered for the twinkle in his eye, his courtesy at all times and his patience and tolerance. He was involved in all aspects of village life including the Pembury Society, Footpath Walkers and sports clubs, particularly as a boy.

As a prominent local farmer he was Chairman of the local NFU. He was Chairman of the South East Jersey Club and had a life long love affair with his dairy cows. His knowledge of the local area was legendary.

He was a Founder member of the local Samaritans and also much involved as a volunteer with the CAB.

He was a man of many parts who will be sorely missed by those who had the privilege of knowing him and also by his much loved wife, children, grandchildren and great grandchildren.

Sarah Clarke

PEMBURY CRICKET CLUB

THE CRICKET club goes into a new season with refreshed hope. Both the Saturday adult league teams are in the top Kent Feeder league now and a successful season by either team could see the club move into the Kent League properly for the first time in its history. The club also continues to run adult sides on a Sunday and has a Tuesday evening team. Alongside the teams we have a burgeoning social membership who enjoy watching the cricket and making great use of the club's facilities and, importantly, creating a warm family atmosphere in the clubhouse.

The Junior section of the club remains very active with many young players from 7-16 being coached on a Saturday morning using facilities at both the cricket club and Pembury School. There are also some very competitive games in the Under 13 and 15 leagues, where our talented junior members learn the match skills that will hopefully help them progress into adult cricket in later years.

The key to the ongoing health of the club is to attract new members and families of all ages. Playing-wise, we cater for a wide range of abilities and it is only through introducing new players at all levels that the club can go from strength to strength. If you are interested in playing, or just watching, then we would be delighted to hear from you. Details can be found on page 39

Andrew Dawes, Secretary





Heritage

Garden maintenance & landscaping specialist

All garden maintenance and landscaping work undertaken, including lawnmowing, weeding, hedgecutting, pruning, turf laying and planting. Also paving, brickwork, stonework, timberwork and water features. Friendly and reliable service.

Contact Alex Walsh:

Mob: 07794 070261 • Home: 01959 577684



In life, we sometimes experience times when we find it difficult to cope – counselling can help.

Stress – Depression – Relationship Difficulties

Bereavement – Anxiety – Anger

Karen Hannam Dip Counselling MBACP ACC

07943 777327

karen@hopecounsellingkent.com

Contact me for a free initial assessment

RYMORE LTD

Building Contractors

- Extensions
- Conservatories
- Conversions
- Patios
- Refurbishments
- Landscaping
- Plumbing & Electrical

Free quotations - No obligation



01892 822321 www.rymore.com



HORSE RIDING

THERE IS no shortage of opportunities to appreciate our gorgeous countryside this summer and get a good workout at the same time. Take horse riding for example. It does wonders for your posture and muscle tone. A half-hour lesson could produce far better results than a few hours in the gym; and it's undoubtedly far more enjoyable out in the fresh air surrounded by gorgeous scenery.

After a long gap I got back in the saddle for a lesson. I was so tired out afterwards that I fell off the horse trying to get down and was nursing my legs for a week or two. I used to go hacking for hours with my friends in the Russian countryside and I hope to kick my body back into shape and do the same around Pembury, as I think our countryside is every bit as beautiful and fascinating as Russia's.

You don't have to own a horse to enjoy riding. There are excellent stables and a riding school right on the fringe of Pembury. I was a bit nervous booking my first lesson – I hate being yelled at and treated as an incompetent idiot, which in the past seemed to be a rather common practice in equestrian sports. I was pleasantly surprised by Emma's respectful and friendly approach. I learnt more in a short while with her, than in all my previous years, despite the fact that all my knowledge of equestrian terminology is in Russian, not English! My other surprise was how well natured and trained were Emma's horses. I can't wait for my next time in the saddle.



Masha Odintsova-Bayles

Want to see your advert here?


The Pembury Village News is distributed
to over 2,300 households.

There is still some advertising space
available for the rest of this year.


Email: pvn@pembury.org
for more information

Barsleys

The Department Store



A family business founded in Brenchley in 1891. Over a century of personal service.



The Department Store in Paddock Wood

- Carpets • Flooring • Beds
- Furniture • Curtains
- Blinds • Tracks & Poles
- Free Local Estimates & Delivery
- Fitting Services Available
- Fabrics • Bedwear • Linens
- Duvets • Pillows • Towels
- Schoolwear
- Scout and Guide Uniforms
- Clothing & Footwear for all the family
- Coffee Shop

"Why go anywhere else?"

Barsleys Department Store
16-22 Commercial Road, Paddock Wood Tel: 01892 833464
email: mail@barsleys.co.uk www.barsleys.co.uk

The national agent with local knowledge.

Get the best of both worlds with **YOUR MOVE.**

Contact your local branch on **01892 825355*** or visit our website

www.your-move.co.uk



YOUR MOVE

Moving made easier

*Calls may be monitored and/or recorded for training and/or data protection purposes.

GREEN GARDENING – LIVING WITH WILDLIFE

I AM NO saint when it comes to wildlife on my premises. I am guilty of evicting a mouse and a nesting wasp queen from our shed. Maybe not much of a crime in your eyes, but I know people who won't break a spider's web, let alone chase anything. I guess the degree of tolerance towards wildlife is everyone's private business. But what I would like to advocate is a sensible compromise. We just can't have it all on our terms at the expense of others anymore. I believe that we can find a way to co-exist peacefully, side by side, even in our not-so-large private gardens.

If you don't want wildlife in your garden, fine, but don't harm it. Rather than calling pest control or buying endless killers and deterrents, communicate your message clearly to the opposition. Take away their food and shelter opportunities, plentiful in an average village garden. Common sense won't go amiss. Don't leave food scraps where they could be easily found. Fill up the gaps under the shed and any other garden buildings. Put up a side gate to limit the access to the garden. Clear tall grass and prune the lower levels of your shrubs. The RSPCA has heaps of advice on their website - www.rspca.org.uk. Take care not to trouble a young family if you find one. Wait until later in the season. If you need professional help, there is just the man that I can recommend. John Bryant, www.jbryant.co.uk; 01732 357355 or 07770 788566, is the Animal Welfare Consultant with the British Humane Wildlife Deterrence Association. He has persuaded animals to leave places where they are not welcome or can endanger themselves. He has done work for the NHS, National Grid, various football clubs and even Downing Street. Despite his formidable client list he is far more affordable than a common pest controller and won't harm a fly while helping you out.

If you are worried about snakes in your garden, call Rick Bayles, Pembury Pond Warden and Krag member on 07785 956 141. He'll know what to do.

It really frustrates me that in our 'green' age, the shelves in garden centres are still packed with killing and deterring products from chemicals to ultrasonics. I can't see why anyone would think that they are a good idea. What harm do moles do apart from messing up your lawn? Killing them doesn't help anyone and is a complete waste of time. New ones rapidly find a ready made network of tunnels and gratefully move in. By the way, a mole hill is a fantastic source of fertile soil – just scoop it up and use as compost. Some people are even grateful for moles' tunnels and use them to their advantage, like Mike Leonard, Pembury winemaker.

Foxes, badgers and hedgehogs may be smelly and messy, but they're adorable to watch. Why are we so worried about the diseases they carry and damage they can inflict? How well grounded are these fears? You are no more at risk of catching anything from foxes than from cats and dogs. And if you treat wild animals with the respect they deserve and keep a safe

continued on page 28



Trevor Williams with a rescued cub, Fox Project

GREEN GARDENING – LIVING WITH WILDLIFE

– continued

distance, you don't have to worry about close contact. Most wild animals will only attack humans when provoked. So be sensible and don't try to pet a badger or a fox. If you do come across an animal in need of professional attention, contact the Fox Project, based right here in Pembury and run by Trevor Williams. Their ambulance operates 9am to 9pm daily, just call 07778 909092. For general enquiries, call the Fox Project Head Office 11am-3.30pm, Monday to Friday on 824 111.

People like John and Trevor, my colleagues from Kent Wildlife Trust and BTCV have this wonderful feel about them. I don't know whether it is kindness or compassion or curiosity about nature that makes them so pleasant. But I have to admit that it is remarkably infectious. If caring for wildlife makes us better people, then I am all for it. And there is just the chance for those of you who want to give it a go. Kent Wildlife Trust runs an award scheme "Wild About Gardens", that encourages people to create a range of wildlife habitats in their gardens. Anyone can enter the scheme. You can find information on their website at www.kentwildlifetrust.org.uk/our-work/wild-about-gardens/ or pick up an entry form from the Wyevale garden centre in Paddock Wood. It's a great chance to meet like-minded people. For creative ideas and tips on how to make successful habitats visit KWT Tyland Barn centre near Maidstone. Good luck! In my role as a scheme advisor, I hope I'll be visiting your garden this summer.

Masha Odintsova-Bayles

SPRING ARRIVED – EVENTUALLY

PEMBURY GARDENERS' Spring show was very welcome after such a long, drawn-out winter. The daffodils opened just in time and there were even a few vases of early tulips. In all, 33 exhibitors showed 190 exhibits!

The children decorated eggs beautifully – won by Jemima Dawes and Ruth Mazzei – and this year, children also had their own cookery class to make biscuits. This was won by Lisa Sefton who made delicious heart-shapes, sandwiched with strawberry jam and dusted with icing sugar.

The next show will be on 11 July and features Sweet Peas – perfuming the village hall as soon as you enter. For flower-showing novices, there is a class for three roses; or if you are a newcomer to floral art,

you could make an arrangement that includes seashells. In addition to these, there are many other flower, vegetable, cookery and handicraft sections.



Children can make a miniature garden in a seed tray – including a water feature (under 7 and 7-11 years), and/or to make three decorated Fairy Cakes.

To enter any of the competitions, please contact John Gorringe on 01892 722725. Entry monies and forms must be in by 8pm on Wednesday 8 July. Schedules of Pembury

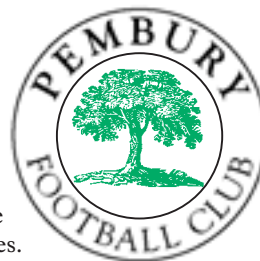
Gardeners' Society events are available from Shirley Smout; call 822031.

Even if you don't enter yourself, just come along and smell the Sweet Peas.

PEMBURY FOOTBALL CLUB

AT THE time of writing, we are entering the final phase of what has, at times, been a testing season. Local football, in general, is going through a difficult period caused by a real shortage of player availability, interest and commitment. We at Pembury are not alone in experiencing this; in fact we are one of the clubs best placed to cope. However there is, throughout the leagues we compete in, a real struggle to not just win games, but to fulfil fixtures.

This season we had to disband our Sunday Third Team in order to preserve the strength of our remaining teams. In continuing to run four teams across two days, we are still acutely aware of the problems that many clubs still face. Next season we will continue to run a first and reserve team on Saturdays and Sundays and call on all potential players in the village and the surrounding area to come and join us for pre-season. We are a club of over 100 years standing, play to a good standard at our highest level and have a good social ethic. Visit our web site on www.pemburyfootball.co.uk to learn more about us. It is updated regularly and will advise when pre-season training begins.



Our current league campaigns have either come to an end or are approaching it. We have had a mixed season. Our Saturday first team compete in Division Two East of the Kent County League, and are involved in a relegation battle with three games left. We are hopeful that we will get enough points from those games to get away from the bottom two. On a positive note we have reached the final of the Tunbridge Wells Charities Senior Cup, where we will play Hawkenbury. The Saturday Reserves play in Division One of the Tonbridge & District League and have completed their fixtures finishing in mid-table. Having been champions for the previous two seasons, our Sunday First Team have finished in third place this year. They rounded off the season in style, though, by beating Simla 2-1 in the West Kent Sunday League Senior Cup Final. The Sunday Reserves play in Division Two of the West Kent Sunday League and are also involved in a relegation battle with three games to go. Of course this is disappointing, but we should remember that this is a reserve side competing against the first teams of other clubs. So, in summary, a mixed season with tough league campaigns; although we are in two senior cup finals and remain hopeful of some silverware.

Andy Rice-Tucker, Chairman

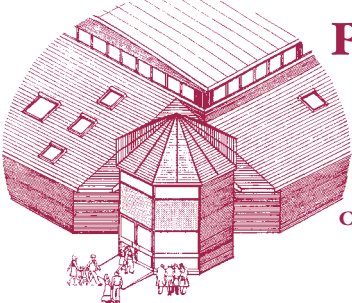
SCOUTS & GUIDES HALL MANAGEMENT COMMITTEE

THE SCOUT and Guide Hut is managed by a committee who maintain and run the hall, and ensure that the hall has all the necessary safety certificates, with an aim to be able to hire it out within the guidelines of the lease agreement with the Parish Council. This stipulates the hall should be used for educational and youth purposes only.



The Hall Committee have had a few changes, and to keep you up to date, here are a few of the members of this committee: Chair – Dick Crouch; Vice Chair (Scouts) – Mike Cartwright; Vice Chair (Guides) – Moira Allan.

The committee is in urgent need of a secretary to take the minutes at the quarterly meetings. If you are interested in taking on this position, please contact one of the members of the hall committee, whose details can be found on page 39.



PEMBURY VILLAGE HALL

AVAILABLE FOR HIRE

Facilities include Main Hall, Meeting Room, Stage, Kitchen, Changing Rooms and Services.

Ideal for Club Meetings, Weddings, Anniversaries, Corporate Functions, Shows, Dances, Musical Events, etc.

CONTACT BOOKINGS MANAGER –
RACHEL WINDUS ON 822837



vintage kids

re-selling well-known Kids' brands in top-notch condition but at credit-crunch prices



We stock great children's clothes, shoes and accessories from brands such as Gap, Boden, OshKosh and Petit Bateau as well as more unique Labels - all for a fraction of the high street price.

For details of our forthcoming events at Pembury Baptist Church, the Village Market and other local venues visit:
www.vintagekidsclothing.co.uk
or call Julie 07894 90371 / Mary-Jane 07981 735994

LIBRARY OPENING TIMES

Pembury Library, The Hop House, Henwood Green Road, Pembury TN2 4HS
Tel: 822278. Email: pemburylibrary@kent.gov.uk

Monday:

Closed

Tuesday:

9 am to 6 pm

Wednesday:

9 am to 6 pm

Thursday:

9 am to 6 pm

Friday:

9 am to 6 pm

Saturday:

10 am to 2 pm

Sunday:

Closed



WEALDEN WINE

IT'S SUMMER, and our thoughts turn to cold, crisp glasses of wine, sipped in the shade of the garden as the sun starts to go down. Well, mine do anyway!

There's something about summer that seems synonymous with wine – I can probably make connections with autumn, winter and spring as well, but summer in particular seems to lend itself to drinking fermented grape juice.

So what has that got to do with Pembury, you may ask. Well, we do have a small vineyard in the village, and more on that later, but the Weald as a whole has a long association with viticulture and, with our changing climate, it may be that vineyards will again become a common feature of our countryside.

According to historical records, a vineyard existed at Ightham as long ago as Roman times and the Domesday Book of Norman England records Kentish vineyards at Chart Sutton, Chislet and Leeds.

During the Middle Ages, vineyards extended from Thame to London and from Sevenoaks to Tenterden and when Henry VIII succeeded to the throne there were 139 sizeable vineyards in Kent!

Then the climate changed, bringing longer, colder winters and local wine making went

into a period of decline until two Kent men, Edward Hyams & George Ordish, helped a revival in English winemaking in the 1940s & 50s. By 1986, Kent vineyards were producing about a quarter of the output of English wine, with vineyards occupying over 300 acres.

Our nearest commercial vineyard is Lamberhurst, with 20 acres under vines and growing a variety of grapes that include Bachus, Rondo, Ortega, Pinot Noir, Reichensteiner and Muller Thurgau. But no wine is actually made at Lamberhurst; their crop goes to the Chapel Down Vineyard at Tenterden, the largest in Kent, and the wine is produced there.

English wine has come on in leaps and bounds in the last few years and now regularly wins awards at international competitions and we're building a particularly strong reputation for our sparkling wines. Unfortunately English wine tends to be expensive, partly because our growers can't achieve the economies of scale that countries like France can manage, but mostly because of the tax the government puts on locally produced wine. Wine makers in the UK face an average total tax bill of over £2 on every bottle of wine they produce; one of the highest rates of tax on wine production in Europe. By the time you factor in the cost of growing the grapes, bottling, marketing etc it's no wonder our locally produced wine struggles to compete with imports.

continued on page 28



WEALDEN WINE – continued

Of course, these costs only apply if you're producing for commercial markets. So perhaps the answer is to take a tip out of Mike Leonard's book and run your own private vineyard!

Mike runs a small vineyard, nearly 400 vines, on a corner of Pippins Farm, just off Stone Court Lane. A chemist by profession, Mike has long held an interest in wine and thought he'd have a go at making his own. Pippins Farm used to run its own small commercial vineyard – some of you will remember the Millennium Wine they produced in 2000 – but, like many growers, found that it was hard to make it run as a viable business. Mike took over what had been their testing ground for the vines and grows an eclectic selection of grapes, similar to that at Lamberhurst but also including other varieties such as Siegerrebe and Chardonnay. In a good year, this small vineyard has produced as much as 200 litres but more commonly produces about half that amount.

It's a challenge to produce large amounts of good quality wine here in the UK. Late frosts are always a big worry for vine growers. Ian Button, the vineyard manager at Lamberhurst, told me that in his 25 years there he's seen the first budding of the vines advance by a good month. That means first buds appearing by early to mid April, when there's still the threat of bad frosts and this can be a major setback. Too much rain, as we've had in the past couple of years, can also be a big problem as the grapes don't develop enough sugar content for conversion to alcohol.

One advantage Mike's vineyard does have is a major infestation of moles! They may be bad news if you're trying to create the perfect lawn, but when you're growing a plant that really needs good soil drainage it's hard to improve on a network of mole burrows!

We can produce very good wines and some of the best English wines come from Kentish vineyards. A warming climate suggests that our wines will only get better; but we can't compete on quantity and price. Kentish wines are destined to be the summer drink of choice for those discerning enough to know that it's worth spending those extra few pounds on locally produced wine – or for those who might want to try producing their own.

Perhaps it's time you gave up on that mole infested lawn and started planting a vine or two!!

Rick Bayles

PEPENBURY EVENTS

THERE ARE several upcoming events arranged by Pepenbury on Cornford Lane. For further details on any of them, contact Maggie Jenkins on 822168 or maggiejenkins@pepenbury.info, or visit www.pepenbury.info.

On 22 June, they will be holding a charity golf day, offering each player the chance to have brunch, play 18 holes and have an evening meal together. A family treasure hunt has been organised for 30 July. On 12 September, a Dragon Boat race at Bewl



Water is in the air. You can join the team, or just sponsor them.

Or if you don't fancy any of these events, you could visit their coffee shop and gift shop, which is now open 7 days a week.

Maggie Jenkins

THE DAY THE AUTOMOBILE ASSOCIATION CAME TO PEMBURY

ONE HUNDRED years ago, the Automobile Association was just four years old. To publicise the Association and to demonstrate the potentialities of motoring, it was decided to transport a battalion of soldiers, at war strength, from London to the sea. It is claimed that the original idea of moving troops by mechanised means was put to the army by the AA itself.



The MP for Hastings, who was a member of the AA, was approached and he obtained the agreement of the Secretary of State for War to arrange for the services of a Guards Battalion to take part. The date fixed for the event was St. Patrick's Day, 17 March 1909, when a fully equipped battalion was to be transported from London to Hastings and back. The Mayor and Council of Hastings also agreed to give the guardsmen Irish stew for lunch at the expense of the town.

Today it would be a simple undertaking, but 100 years ago it was an enormous feat, since the use of mechanised vehicles on such a scale had never been carried out before. Along with the transportation of the guards, with five men to a car, it also meant taking machine guns, ammunition, pickaxes, etc. To overcome this problem, it was decided to rip the bodies off 30 London taxis and replace them with platforms on which to lash all this equipment. Instructions were also given to all police inspectors on the London to Hastings road to co-operate, not only with the battalion of guards, but with the AA patrols, who would be part of the cavalcade and would be out in force. Along with the guards and patrolmen, members of the AA were also invited as guests, and to join the event on 17 March 1909.

Leaflets were distributed in advance to everybody in towns and villages on the London to Hastings road, advising them that there would be several hundred motor cars passing through, and would all drivers, cyclists and pedestrians kindly keep as closely as possible to the near side of the road as the cars go by.

In 1909, motoring was for the very rich, and to see just one motor car caused a stir and sometimes hostility amongst people at that time. An event of such a magnitude would have encouraged everybody along the route to be out in force when the cavalcade passed through

on the way to Hastings and when the guards returned later in the day. It would undoubtedly have remained in the memories of everybody who witnessed it.



In the AA's jubilee year in 1930, the guards' London to Hastings run was re-enacted and many older residents in the village may well remember that event or can recall their parents or grandparents telling them about the original event on 17 March 1909; the day that the AA came to Pembury.

Les Cook

CRIME IN PEMBURY

WELL, BY the time you read this, we will already be halfway through the year! Still, let us look at the good news; the overall reported crime figure is down to 43, which is the lowest it has been for a long time.

Sometimes, I am criticised for being cynical . . . I just hope that the police method of reporting crime has not altered. We are only too well aware that last year three separate incidents regarding parish property received only one reference number.

Although criminal damage in the last two reports seems to be on the decline, I have received reports that over the weekend 25/26 April, possibly 17 cars were damaged in Canterbury Road and Henwood Green Road, possibly during the early morning. I hope all were reported to the police by residents and owners and that individual

reference numbers were given by the police. We worry that it may have been months in planning and surveillance to launch a series of attacks like that. Or perhaps it was just opportunistic . . .

It seems that theft is the number one pain at the moment, so please look after what is yours. Perhaps it is related to the present economic climate; we will probably never know.

In the last week, it has also been brought to my attention that expensive wooden farm gates and metal gates have been stolen. Look at your own gates and if possible make them difficult to remove.

Please do keep assisting the police; report anything suspicious but do not accept any negative response. Good Luck!

Hugh Boorman

MONTH	Burglary Dwelling	Burglary Other	Criminal Damage	Drugs	Fraud and Forgery	Other Offences	Theft from Motor Vehicle	Theft Offences	Violent Crime	TOTAL
January 2009			1		5	1	2	3	4	16
February 2009		4			3		1	1	1	10
March 2009	2		2	2			1	10		17
TOTAL	2	4	3	2	8	1	4	14	5	43
ROAD										
Brickfields			1							1
Half Moon Lane				1						1
Hastings Road	1	1				1	2	1	3	9
Henwood Green Road		1						3		4
Henwoods Mount								1		1
High Street					5			3		8
Lower Green Road									1	1
Maidstone Road	1							1		2
Old Church Road								1		1
Pembury Road				1	3		1	2	1	8
Penns Yard			1							1
Romford Road		2								2
Tonbridge Road			1				1	2		4
TOTAL	2	4	3	2	8	1	4	14	5	43

FOR YOUR DIARY

Village Market – Village Hall, Tuesdays 9am-11.30am.

Pembury Community Warden Surgery – Village Hall, Tuesdays 10am-11.30am.

Town & Country (High Weald Housing) – Clinic, Tuesdays 10am-11.30am.

WRVS Lunch Club – Village Hall, Wednesdays 11.45am during school term time.

CAB – Pembury Library, Thursdays 9.30am-11.30am.

June

- 7 Farm Open Day – Downingbury Farm – Contact Peter Jervis on 824282
- 20 Musical Picnic on the Village Green – 6.30pm

July

- 1 St. Peter's Mothers' Union – Visit to Broadview Gardens at Hadlow College – Meet Upper Church Car Park – 2pm
- 2 Pembury Afternoon WI: Talk on Diabetes by Judith Strutt – Village Hall – 2pm
- 3 Pembury Evening WI: Call My Bluff, Mary Longhurst & Friends – Village Hall – 7.45pm
- 4 Pembury School Summer Fayre – Pembury School – 2pm
- 4 Pembury Footpath Walkers – Meet outside the Camden Arms – 2.15pm
- 6 Floral Art – Village Hall – 7.45pm
- 6 Parish Council Meeting – Lower Green Recreation Ground Pavilion – 8pm
- 9 Pembury Book Group – Pembury Library – 11am
- 11 Pembury Gardeners' Society Summer Show – Village Hall – 2.30pm
- 13 Pembury U3A – Catholic Hall – 2pm

August

- 1 Pembury Footpath Walkers – Meet at Stonecourt Lane Bus Stop – 2.15pm
- 3 Floral Art – Village Hall – 7.45pm
- 5 St. Peter's Mothers' Union: Garden Party & Bring & Buy Sale – 2a Lower Green Road – 3pm
- 6 Pembury Afternoon WI – Village Hall – 2pm
- 7 Pembury Evening WI: Annual Social Evening – Julia Jarman's garden – Village Hall – 7.45pm
- 10 Pembury U3A – Catholic Hall – 2.30pm
- 13 Pembury Book Group – Pembury Library

September

- 2 St. Peter's Mothers' Union: Visit to Glazy Daisy Ceramic Studio, Southborough – 7pm
- 3 Pembury Afternoon WI: Osteopathy by Matt Stanford – Village Hall – 2pm
- 4 Pembury Evening WI: An Evening of Laughter, Marianne Martin – Village Hall – 7.45pm
- 5 Pembury Footpath Walkers – Meet at BoPeep Corner – 2.15pm
- 7 Floral Art – Village Hall – 7.45pm
- 10 Pembury Book Group – Pembury Library – 11am
- 12 Pembury Gardeners' Society Autumn Show – Village Hall – 2.30pm
- 14 Pembury U3A – Catholic Hall – 2.30pm
- 14 Parish Council Meeting – Village Hall – 8pm
- 26 It's a Knockout – Lower Green Recreation Ground – 1pm

ROSIE'S RECIPES

THIS SUMMER'S selection of recipes I have chosen are something for the children, something for the whole family and one for the adults to enjoy. Let's hope we get some nice weather to go with them.

Fruity Milkshakes

Ingredients for 2 servings (Apricot Milkshake)

300 ml (1/2pt)
cold milk
150 g (5oz)
apricot yoghurt
1-2 tsp caster
sugar, to taste
4 scoops of
vanilla ice cream
Pinch of nutmeg



Preparation:

Place milk, apricot yoghurt and sugar in blender or processor and purée for 30 seconds. Pour into 2 glasses and top with ice cream and nutmeg.

Ingredients for 2 servings (Banana and Chocolate Milkshake)

3 tsp drinking chocolate
1 small banana, sliced
450 ml (3/4 pt) cold milk
4 tbsp double cream
Crushed ice, to taste
2 chocolate flake bars

Preparation:

Dissolve drinking chocolate in tbsp hot water. Cool. Place banana, milk, cream and chocolate mixture in a blender or processor and purée for 30 seconds. Place crushed ice in two glasses and pour milkshake over. Serve each with a chocolate flake bar.

Cherry Ice Cake

Ingredients for 4 servings:

1/2 tbsp oil
2 x 411g (14oz) cans cherries, pitted or 225g (8oz) fresh cherries
1 litre (2pt) block raspberry ripple ice cream

150 ml (1/4 pt)
double cream
Cherries and
mint springs, to
decorate

Preparation:

Grease and line a 900 g (2lb) loaf tin. Drain cherries if using canned, or wash fresh fruit. Measure ice cream block against loaf tin and cut length to fit. Carefully slice ice cream block into three, lengthways. Place a slice of ice cream in base of tin and arrange half the cherries over top. Place another slice of ice cream on top and repeat cherry layer. Top with final layer of ice cream, cover and freeze for at least 3 hours. Remove from freezer at least 10 minutes before serving. Turn onto a serving plate and whip cream. Pipe cream along top of cake and around base. Decorate with cherries and mint. Serve immediately.
Note: Make sure you work quickly once ice cream is out of the freezer as it softens quickly and will become unworkable.



Summer Wine Punch

This is a light and refreshing punch and is excellent to serve when fresh strawberries are in season.

Ingredients for about 20 servings:

450 g (1lb) fresh strawberries hulled and halved
50 g (2oz) caster sugar
2 bottles Riesling or Chablis, chilled
250ml (8floz) vermouth (dry or sweet, as preferred), chilled
1 litre (1 1/2pt) bottle sparkling lemonade or soda water, chilled
Ice cubes, to serve



ROSIE'S RECIPES – continued

Preparation:

Put strawberries into a chilled punch bowl. Sprinkle with sugar and stir well. Pour chilled wine, vermouth and lemonade or soda water over strawberries. Stir well, add ice cubes and serve at once. Good served with salted nuts, olives and canapés.

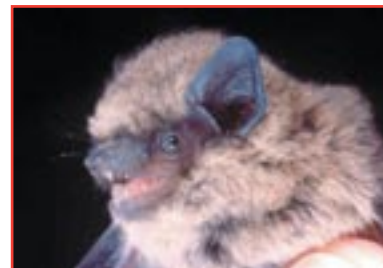
Note: This punch is best served immediately, as it loses its sparkle if left to stand for too long. Be sure to have all the ingredients well chilled before commencing.

Enjoy the Summer.

Rosie Bass

BATS

“**H**ELP! BATS are ruining my attic! Calm down, they don't.” They are exceptionally delicate creatures who use existing tiny holes and cavities to get inside buildings. On most occasions you won't even know they are there! The presence of Pipistrelle, Serotine, Noctule and Long Eared bats have all been recorded in Pembury in the last year. If you do come across them in your house, you can get advice from the Kent Bat Group via www.kentbatgroup.org.uk or on 01227 275439. It is a crime to disturb a roosting bat, even if that means you have to postpone work on your house. But that doesn't mean you'll have to cancel it. Let professionals advise you on how best to proceed. Because the bat population in the UK is currently in decline, all species are protected by the law. Keep that in mind, please.



Pipistrelle bat

Masha Odintsova-Bayles

CHURCH TIMES

ST. PETER'S CHURCH SERVICES

Upper Church

8am Holy Communion

9.45am The Parish

Eucharist and Jun Chch

10am Holy Communion

(Wednesdays)

Old Church

11.30am Matins (except

first Sunday, Holy

Communion)

Evening services as advertised on Church noticeboards.

Contact tel. no. 824761.

www.pemburychurch.net

CATHOLIC CHAPEL OF ST. ANSELM – PEMBURY

Sunday Mass 10.30am

Holy Days – Vigil Mass
7.30pm

Weekday Service:

Wednesday – Mass 7pm

www.stjustusandanselm.org.uk

PEMBURY BAPTIST CHURCH

Whether you are familiar with church or have never been to a church before, PBC is an enjoyable, caring and diverse community with activities all through the week for all ages.

Our services explore relevant life issues and are on Sundays at 10am for a family service (with children's activities) and 6.30pm for a café service. We'd love to see you there!

Please call 825590 or visit www.pemburybaptistchurch.org.uk for details.

YOUR REPRESENTATIVES

PARISH COUNCIL



Cllr June Crowhurst,
44 Elmhurst Avenue TN2 4DA
Tel: 824873

Chairman of Parish Council
*Chairman, Amenities, Christmas
Lights and Pride in Pembury*



Cllr David Coleman
22 Ridgeway TN2 4ER
Tel: 823402



Cllr Patrick Gillan
1 Knights Close TN2 4EL
Tel: 825324



Cllr Matthew Jackson
4 Hastings Road TN2 4PD
Tel: 824761

*Chair Public Relations
Working Group*



Cllr Steve Morton
2 The Coppice TN2 4EY
Tel: 824938



Cllr Andrew Procter
82 Woodhill Park TN2 4NP
Tel: 823064
*Chairman, Audit, Finance and
Personnel Working Group*



Cllr Chris Snow
1 Cornford Park TN2 4PW
Tel: 825428



Cllr Kevin Edser,
49 The Gill TN2 4DJ
Tel: 823643

Vice Chairman of Parish Council
*Chairman of Planning & Highways
Working Group*



Cllr Janet Ditchett,
7 Cornford Park TN2 4PW
Tel: 822586



Cllr Duncan Hope
80 Woodhill Park TN2 4NP
Tel: 824496



Cllr Melanie Karpinski
48 Maidstone Road TN2 4DE
Tel: 824466



Cllr Sally Osborn
34 Canterbury Road
TN2 4JT. Tel: 822726
*Chairman, Environment,
Environmental Issues (incorporating
Allotments & Burials)*



Cllr Beverli Shaw
3 Knight Ridge TN2 4HP
Tel: 823268



**Clerk to the Pembury Parish
Council**
Barbara Russell, 6 The Grove
TN2 4BU. Tel: 823193. Email:
clerk@pemburypc.kentparishes.gov.uk

Deputy Clerk to the Pembury Parish Council

Yvette Allen, 6 The Grove TN2 4BU. Tel: 823193 Email: deputy@pemburypc.kentparishes.gov.uk

BOROUGH COUNCIL

Paul Barrington-King, 22 The Coppice, TN2 4EY. Tel: 825144

June Crowhurst, 44 Elmhurst Avenue TN2 4DA. Tel: 824873

Mike Tompsett, 14 Gimble Way, TN2 4BX. Tel: 822711

COUNTY COUNCIL

Kevin Lynes, 5 Downs Cottages, The Down, Lamberhurst, Kent TN3 8EX. Tel: 890922

VILLAGE ORGANISATIONS

AGE CONCERN

Mrs Sandra Springett. Tel: 522591

BLACK & WHITE MARCHING MILITAIRE

Louise. Tel: 823097

CATHOLIC CHURCH

Hall Enquiries: Janet Ditchett. Tel: 822586

CONSERVATIVE PARTY

Terry Cload, 56 Herons Way. Tel: 823966

FRIENDS OF PEMBURY HOSPITAL

c/o Pembury Hospital. Tel: 823535

FRIENDS OF PEMBURY PARISH CHURCH

Chairman: Mrs S. Clarke, Little Stanton,
Romford Road. Tel: 823932

GUIDES, BROWNIES AND RAINBOWS

Mrs M. Allan, 9 Henwood Green Road. Tel: 822373

HOSPICE IN THE WEALD

Maidstone Road. Tel: 820500

KENT COLLEGE

Headmistress: Mrs Sally-Anne Huang. Tel: 822006

KENT COLLEGE PREP SCHOOL & NURSERY

Headmistress: Mrs Ann Lawson. Tel: 820204

LABOUR PARTY

Dave & Sally Osborn, 34 Canterbury Rd. Tel: 822726

LIBERAL DEMOCRATIC PARTY

David Mills. Tel: 825577

LITTLE RASCALS

c/o PBC Office. Tel: 825590

MULTIPLE SCLEROSIS SOCIETY

TW District. Tel: 0845 6037882

NATIONAL FEDERATION OF THE BLIND, UK

Michael Coggles. Tel: 822705

NEIGHBOURHOOD WATCH

Gill Pavely. Tel: 822605

PEMBURY ALLOTMENT ASSOCIATION

Brenda Brown. Tel: 824163

PEMBURY ATHLETIC (YOUTH) FOOTBALL CLUB

David Gow. Tel: 824119

PEMBURY BAPTIST CHURCH

Rev. Wayne Alexander, Church Office. Tel: 825590

PEMBURY BOWLS CLUB

Len Birnie. Tel: 01892 681222

PEMBURY BRIDGE CLUB

Geoff Plummer. Tel: 824652

PEMBURY COMMUNITY LINK GROUP FOR

HOSPICE IN THE WEALD

Graham Hayler, 9 The Gill. Tel: 824680

PEMBURY COMMUNITY WARDEN

Tel: 07813 694138

PEMBURY COMMUNITY WORKING PARTNERSHIP

Parish Office. Tel: 823193

PEMBURY CRICKET CLUB

Hon. Secretary: Andy Dawes, 17 Cornford Park, Pembury.
Tel: 822862

PEMBURY FOOTBALL CLUB

Saturday Secretary: Bill Baker. Tel: 825822

Sunday Secretary: Phil Craxton. 823928

Chairman: Andy Rice-Tucker,

35 Woodhill Park. Tel: 822483

PEMBURY FOOTPATH WALKERS

N. & K. Franklin, 11 The Meadow. Tel: 823212

PEMBURY GARDENERS

Ann Purton. Tel: 824223

PEMBURY PAVILION BOOKINGS

Carole Edser. Tel: 823643

PEMBURY PHOENIX TWIRLERS

Dave Brett. Tel: 824233

PEMBURY PLAYERS

James Whitehorn. Tel: 824854

PEMBURY SCHOOL

Headteacher: Mrs C. Thewlis. Tel: 822259

PEMBURY SCHOOL ASSOCIATION

Sam Knight. Tel: 824862

PEMBURY SCHOOL HOUSE NURSERY

Teacher in charge: Rachel Teigen. Tel: 825580

PEMBURY SEQUENCE DANCE CLUB

Secretary: Mrs Marion Warren. Tel: 547617

PEMBURY SHORT MAT BOWLING CLUB

Arthur Storey. Tel: 822509

PEMBURY SOCIETY

Chairman: Ken Watts. Tel: 822770

PEMBURY TENNIS CLUB

Mrs S. Smith, 2 Ridgeway. Tel: 822405

PEMBURY U3A

Membership Secretary: Andrew Richardson.
Tel: 824012

PEMBURY UPPER AND OLD CHURCH

Rev. Matthew Jackson Tel: 824761

PEMBURY VILLAGE MARKET

Karol Young. Tel: 823413

Julie Patten. Tel: 824479

PEMBURY YOUTH THEATRE ACADEMY

Dee Barrington-King. Tel: 825144

PEMBURY

Principal: Mr Roger Gibson, Cornford Lane. Tel: 822168

POLICE COMMUNITY SUPPORT OFFICER

PCSO Nick Brown. Tel: 07772 226001

ROTARY CLUB OF SOUTHBOROUGH & PEMBURY

Secretary: Mike Raper. Tel: 01892 520171

ROYAL NATIONAL LIFEBOAT INSTITUTION

Peter Chartres, 54 Woodhill Park. Tel: 823759

SCOUTS, CUBS AND BEAVERS

Mike Cartwright, 16 Cornford Park. Tel: 823235

SCOUT & GUIDE HQ MANAGEMENT TEAM

Mike Cartwright, 16 Cornford Park. Tel: 823235 and

Moirá Allan, 9 Henwood Green Road. Tel: 822373

ST. ANSELM HALL ENQUIRIES

Janet Ditchett. Tel: 822586.

ST. PETER'S MOTHERS' UNION

Secretary: Mrs M. Adams. Tel: 822769

TOWN & COUNTRY (HIGH WEALD HOUSING)

Sally Hunter. Tel: 501605

TREE WARDEN. Caroline Mazzei. Tel: 822493

TUNBRIDGE WELLS ACCESS GROUP

Gill Pavely. Tel: 822605

TUNBRIDGE WELLS & DISTRICT VICTIM SUPPORT

SCHEME. Tel: 513969

VILLAGE HALL

Manager (bookings): Rachel Windus. Tel: 822837

WHEELCHAIR LOAN

(24 hour maximum, for Pembury Residents)

Pauline Hawker. Tel: 824327

WOMEN'S INSTITUTES

Afternoon: Mrs Margaret Buss. Tel: 822530

Evening: Mrs Angela Saunders. Tel: 822307

WRVS LUNCH CLUB

Mrs Amanda Everett. Tel: 823280



Kent
College
Preparatory School



care

**Kent College Preparatory school
for girls aged 3-11**

Old Church Road, Pembury,
Tunbridge Wells, Kent TN2 4AX

Tel: 01892 820204 Fax: 01892 820214
prepschool@kentcollege.kent.sch.uk
www.kent-college.co.uk

Kent College is a registered charity no 307920 and is a
member of the Methodist Independent Schools Group.