

PEMBURY VILLAGE NEWS

A photograph of a stone church with a tall spire, surrounded by a snowy graveyard under a blue sky. The church is made of light-colored stone and has a dark, steeply pitched roof. The spire is also covered in snow. The graveyard in the foreground is filled with numerous gravestones of various shapes and sizes, all partially covered in snow. A large evergreen tree is on the left side of the church. The sky is a clear, bright blue with a few wispy clouds.

Issue 136

WINTER 2008

CONTENTS

Editor's Note	3	Pembury Gardeners' Society	
Fireworks	3	Autumn Show	25
Clerk's Report	5	My Plot	27
Pembury Youth It's A Knockout	5	Pembury Scouts Survival	
Behind The Blue Hoardings	7	Weekend Camp	28
Does Every Little Help?	9	A New House And The Ultimate	
In Memory of Elizabeth Coxon-Taylor	11	Challenge	28
Butterflies	11	Pembury Bowls Club	29
Snippets	13	Dieppe To Marseille – 6-Day	
Dick Whittington Returns To		Epic Bike Ride	29
Pembury	13	Green Gardening – Happy Hedging!	31
Pembury People – Bernie Bass	15 & 16	Church Services Over The	
Pembury Day Centre	16	Christmas Period	33
Report Of The Pembury Society	17	A Reply To 'Crime in Pembury'	34
Kent College	17	Crime in Pembury	34
Clara and William Henry Burgess	19 & 20	For Your Diary	35
Pembury In The Past	20	Rosie's Recipes	36
Pembury Village Market	21	Pembury Library's Birthday	37
Pembury School Raises £2,044		Church Times	37
For Africa	21	Your Representatives	38
Your County Councillor Reports	23	Village Organisations	39
Kent Police Male Voice Choir	25		

Cover photograph by Hugh Boorman.

Editorial Working Group:

Louise Fowlie (Editor), Paul Barrington-King, Rosie Bass, Masha Bayles, Rick Bayles, David Coleman, June Crowhurst, Janet Ditchett, Sally Osborn and Kathy Wallwork.

Please note: The Editor's decision is final on whether or not to publish any item submitted. The Editor reserves the right to edit (that is to cut, précis, alter, correct grammar and spelling) any item published.

PEMBURY VILLAGE NEWS

Editor: Miss Louise Fowlie
c/o 6 The Grove, Pembury TN2 4BU

Distribution enquiries: Parish Clerk 823193

Email: pvn@pembury.org

Website: www.pembury.org

Pembury Village News is published four times a year by the Parish Council, but the views expressed in the magazine do not necessarily represent official council opinion or policy.

Typeset and printed by Folderspring and Heronswood Press, Tunbridge Wells.

EDITOR'S NOTE

2008 HAS BEEN a busy and eventful year in our calendar. We have been fortunate to have facilities improved in our village, such as the Pavilion in the Lower Green Recreation Ground for community and junior football use. The Multi-Use Sports Area, also in the Recreation Ground, is another facility which has been well used.

Our community has seen some changes too. The churches of our village joined forces for Hope 2008 and supported our community throughout the year by holding many events and raising money for the Hospice in the Weald.

Pepenbury, on Cornford Lane, celebrated its 80th birthday. They held various events throughout the year including a Charity Fundraising Ball back in May.

St. Peter's Upper Church played host to two

concerts this year, the first featuring Rebecca Hollweg and her group, and the second featuring the Police Male Voice Choir.

Our Council also changed. We saw the change of Chairman from David Coleman to June Crowhurst. We also saw the departure of Steve and Alison Morton, Jennifer Roberts, Keith Farley and the arrival of Andrew Procter, Kevin Edser, Patrick Gillan and Chris Snow. All have settled well into their new roles.

The Peabury Village News saw a change of editor too. I am extremely grateful to Alison for all the help she has given me (and still gives) as I take over this role.

And now with the festive season upon us, it is just left for me to wish you all a happy and wonderful Christmas.

Louise Fowlie, Editor

FIREWORKS!

THE ANNUAL display held on 7 November, organised by Peabury Parish Council, was better than ever. Thousands of people flocked to the Recreation Ground to watch the spectacular display. Thank you to everyone for your especially kind donations which amounted to £2,176, the highest ever given at this event, and will be donated to Peppenbury and St. John's Ambulance. Thank you too to those involved in the organisation and running of the evening, helping to ensure we all have a great time. We look forward to next year's event.

Editor



COPY FOR NEXT ISSUE

Any news items or articles for possible inclusion in the next issue of this magazine must be forwarded to the Parish Office, c/o 6 The Grove before
1 February 2009.

If you use a computer to type your article, it would be extremely helpful if you could send it (and photos) in by e-mail to pvn@peabury.org



BarnesKingsnorth



ESTATE AGENTS

Please call in to discuss all your property requirements in a relaxed,
friendly environment

☆☆ OPEN 6 DAYS A WEEK – MONDAY TO SATURDAY ☆☆

16 High Street, Pembury TN2 4NY. Tel: 01892 822880

Email: pembury@bkea.co.uk

Other offices at

TONBRIDGE
119a High Street
Tonbridge, Kent TN9 1DL
Tel: 01732 771616

RESIDENTIAL LETTINGS:
119a High Street
Tonbridge, Kent TN9 1DL
Tel: 01732 771616

Burtons Pembury's Solicitors

★ Prompt Efficient Friendly Service

The Tyled House
23a High Street
Pembury, Kent TN2 4PH

Tel (01892) 824577

CLERK'S REPORT



THE LAST couple of months have been very busy for the Parish Council. In November, a very successful fireworks evening was held, with a retiring collection of £2276 to be divided between St. John Ambulance and Pepenbury.

The Annual Remembrance Day Parade and Service took place at the Upper Church. This was extremely well attended by both young and old, and the Parish Council would like to give special thanks to the uniformed branches of the Scouts and Guides and the Parade Leader, Mike Cartwright.

The new youth area in the Lower Green Recreation Ground is due to be opened by the Mayor of Royal Tunbridge Wells, Cllr Mike Rusbridge, on Saturday 13 December 2008 at 11.00am. This is an example of the partnership between the Parish Council and Tunbridge Wells Borough Council as Leisure Services at TWBC were able to facilitate a large grant from the Lottery Fund to assist in the project.

If you have not been to the Recreation Ground lately, it is well worth a visit. Over the last three years, a new kindergarten has been installed, a state-of-the-art sports pavilion with an area for community use has been completed, and now the youth area comprising of a multi-use games area, a skate park and older children's play equipment is in full use. The next project is, hopefully, to install outdoor adult gym equipment on the old tennis courts. The Parish Council is aware that gym membership is beyond some people's pocket and hopes that free use of equipment in the heart of the village will encourage many adults to increase their fitness levels.

Finally, there are vacancies for councillors on the Parish Council. If you are interested and would like to find out more, please contact me on 823652 or email [HYPERLINK "mailto:clerk@pemburypc.kentparishes.gov.uk"](mailto:clerk@pemburypc.kentparishes.gov.uk) clerk@pemburypc.kentparishes.gov.uk.

Barbara Russell

PEMBURY YOUTH IT'S A KNOCKOUT

THE AFTERNOON of Saturday 20 September saw groups of 11-16 year-olds from around Pembury village gather together to participate in 'It's A Knockout'. Seven groups of youngsters attempted to win the 'Denise Barnes' Cup' by taking part in six different activities. These games were arranged by different organisations from around the village and included a basketball game, a football shoot-out, and rounders.

The afternoon aimed at raising money for the new Youth Area in the Recreation Ground, and participators and spectators had the opportunity to enter a raffle and have a go on the tombola. Many people turned out for the event, which is now an annual occasion.

The teams went head-to-head in each activity for points, and after they had finished, the winning teams were announced. In third place came the team from St. Anselm's. In second place, the team from St. Peter's received certificates to mark their success. The winning team, from Pembury Athletic Youth Football Club, were presented with certificates and the Denise Barnes' Cup, by Denise Barnes. The team celebrated by running a victory lap around the Recreation Ground.

The afternoon has been deemed a huge success, and I am in no doubt that the youth of the village will be eagerly awaiting next year's event.

Editor



W H A T E V E R
T H E O C C A S I O N
Your local Hotel

- Conferences, Meetings & Events
- Dinner Dances, Christenings & Funerals
- Weddings & Civil ceremonies
- Poolside Club and Spa
- Mallows Restaurant for great dining
- Free car parking - Open to all

TO BOOK PLEASE CALL **01892 823567**

www.ramadajarvis.co.uk/tunbridgewells



West Kent Shooting School

New Hay Farm, Old Hay (off Pearsons Green Road), Paddock Wood, Kent TN12 7DG

A PREMIER PLUS GROUND

We offer the most comprehensive range of Clay Pigeon Shooting in the South East

Events

Young Shots Days • Have a Go Days
Charity Events • Ladies Days
[Check our website for dates](#)



Practice Facilities in

English Sporting • Skeet

[Gun Fitting & Lessons](#)

[Corporate Days • Gift Vouchers](#)

[Fully Equipped Clothing and Accessory Shop](#)

Open Monday to Friday from 10 am to 5 pm

Tel: 01892 83 4306. info@wkss.demon.co.uk. www.wkss.demon.co.uk

Brian V Toogood

CARPETS & VINYLs SUPPLIED & FITTED
CARPETS & UPHOLSTERY CLEANED



Stain protection treatment for carpets and upholstery

FOR PERSONAL & PROFESSIONAL SERVICE



OVER 28 YEARS' EXPERIENCE.
EST 1977

Any make of carpet available.
Pattern books brought to your home.
Carpet and upholstery cleaning, also rugs and orientals.
Carpets adapted and repaired.

TEL: PEMBURY 824252



KNIGHTS KITCHENS

**KITCHENS. BEDROOMS.
BATHROOMS AND STUDIES**

For all your Design Needs

Full Design service Offered - Suppl. Only or Fit Only if Required

Tel: (01892) 826016 Mob: (07973) 738777

WWW.KNIGHTSKITCHENS.CO.UK

BEHIND THE BLUE HOARDINGS

FOR MANY of us, travelling past Notcutts on the way to the A21, two thoughts come to mind; “When are these roadworks going to be finished?” and “What exactly is going on behind those blue hoardings?” Well, now your PVN can reveal all.

The roadworks will all be completed in early December (of this year!). As for what’s happening behind the hoardings; the new Pembury Hospital is progressing at considerable pace. I recently met members of the development team at the new hospital – an enthusiastic bunch, justifiably proud of their project.

This will be one of the finest hospitals in the country when it’s completed. The hospital is costing £226 million to build and will have 512 beds which will all be in single occupancy rooms with en-suite facilities – the first acute hospital in the country to offer 100% single room occupancy; something that is at the forefront of current thinking on the future of health care.

The approach behind this new hospital puts the patient at the very centre of the hospital’s focus, with special reference to the patient’s safety and with the accent on ensuring a positive hospital experience, adding to the patients’ well-being and potential recovery rate.

The finished hospital is still some four years away, (though the first patients will start to use the hospital facilities in early 2011) but work is progressing extremely well. Everything is running to schedule; a major services upgrade has recently been completed, bringing improved power and

water services into the site, the new hospital entrance and roundabout is fully operational and a new road for construction traffic has been opened to the south of the site.

This hospital is being built with the next 60 years in mind and the attention to detail is impressive. A biomass boiler is being installed and the management team have been set tough energy targets for the running of the hospital to ensure that environmental issues are addressed. Certainly, it’s an exciting build on a large scale but it’s when you look at the thought that has gone into designing the patients’ rooms, the positioning of facilities and furniture, the organisation of technical and nursing support that you start to understand the scale of vision that’s behind our new hospital.

I could go on at considerable length about construction details, occupation schedules, the Pebble project (an international research programme on hospital design) and many more details – but constraints of space mean that can’t happen in this issue. However, we plan to bring you regular updates on the hospital’s progress over the coming months – and if you have any questions about the new hospital please let us know and we’ll try to address these in future articles.

For now, rest assured that the project is on schedule – and those roadworks will be all finished in time for Christmas!

Rick Bayles





PEMBURY PAVILION

NOW AVAILABLE FOR HIRE

Brand New Facilities in the Recreation Ground
Suitable for Children's Parties, Social Groups, Sports Events, Meeting and more . . .

For further information contact
Carole Edser on 823643 or pemburypavilion@msn.com

David Salter

Gas & Plumbing Services

Central Heating Installations & Upgrades

Boiler & Cylinder Changes

Breakdowns, Connections & Servicing of all gas appliances

15 Years experience with British Gas

Corgi Registered



EMERGENCY CALL OUTS – MOBILE 07733 107333 – HOME 01892 824481



The Old Chapel
Krysia Ritchie BSc (Hons) Ost

Babies, children, adults
and during pregnancy

Registered Osteopath

Tel: 01892 826 133

The Old Chapel | Hastings Road | Pembury | Kent TN2 4JS

Heritage New Drives

Block Paving Specialists

www.heritagenewdrives.co.uk

Tel: 01892 723849 Mobile: 07785 112583

Thinking of a new drive?

Free Estimates – Give us a call

Paydon, Petteridge Lane, Matfield, Tonbridge, Kent TN12 7LX

DOES EVERY LITTLE HELP?

IT SEEMS THAT our modest Tesco, on Pembury Road, is among the superstore giant's most popular stores across the UK. As a result, Tesco have announced plans to seek planning permission to extend the current store in order to better meet the growing demands of local consumers.

Many of you will have seen the flyers that Tesco distributed at the Pembury Road store to advise customers of their plans for a new store with a modern, environmentally friendly design. Under Tesco's proposals a new 40,000 square foot store will replace the existing 16,000 square foot supermarket – almost tripling the size of the current building. Their proposals feature a timber framed store design that includes a number of environmentally friendly features, including green roofing, extra bicycle parking and new recycling facilities. This new store would provide a wider selection of products, allow Tesco's to carry more stock and provide a number of new jobs in the area. Their proposals even include a possible community facility, though the exact nature of this is yet to be devised.

Asking around it seems that most people are reasonably positive about the proposals. In general there's an acknowledgment that the store is oversubscribed for the area it serves and that a larger store will offer more choice and be less likely to run out of stock. Most concerns centre around the impact the expansion will have on the character of Pembury. How will it impact on our local shops and services and will it just turn us into another suburb of Tunbridge Wells?

I put these concerns to Tesco and their response was as follows: "We'd expect a new Tesco to be both popular, but also complementary to existing shops and services in Pembury. I'm sure local people using them will continue to do so, but will now also be able to complete their full grocery shop in the village, rather than travelling further afield".

They're absolutely right. The reality is that it will have as much impact as we want it to have. If we're concerned about the village character of Pembury then it's up to us to preserve that character.

If we continue to use our local independent shops and treat the supermarket as a convenience that supplements the facilities we already have, then there's no reason that it needs to have any more effect on the village than our current Tesco store. The building of the original store attracted its fair share of criticism when it first appeared some ten years ago but it does serve a very strong need and the village still has a number of independent food stores and farm shops. Tesco's own tagline says "Every little helps". If we all do our own little bit to support all our local businesses we can keep our village character and still benefit from an improved supermarket service.

We understand that Tesco will submit their planning application later this year. If you want to find out more about their plans for the new store you can visit the store information desk or contact Francis Mallinson on 020 7842 0155 or email community@pemburytesco.co.uk.

Rick Bayles



G. F. GROVES

YOUR FRIENDLY LOCAL BUILDER

**CARPENTERS
JOINERS**

**BUILDING
CONTRACTORS**

EXTENSIONS/CONVERSIONS/NEW-BUILD

**PLANNING SERVICE AVAILABLE
PURPOSE-MADE JOINERY**

FREE ESTIMATES • FAST SERVICE

Telephone (01892) 724424

NEED AN ACCOUNTANT?

APEX ACCOUNTANCY - CHARTERED CERTIFIED ACCOUNTANTS

10% DISCOUNT ON OUR PUBLISHED
FIXED FEES WHEN YOU MENTION
THIS ADVERT (SEE WEBSITE FOR
DETAILS OF OUR CHARGES)

**Paddock Wood
01892 835738**

www.apexaccountancy.co.uk

**SOLE TRADER, PARTNERSHIP AND LIMITED
COMPANY ACCOUNTS; PERSONAL AND
COMPANY TAX INCLUDING SELF
ASSESSMENT TAX RETURNS; VAT, PAYROLL
AND CIS; REGULAR BOOKKEEPING SERVICE
AVAILABLE**

**SPECIALISTS IN SAGE ACCOUNTS SOFTWARE AND
MEMBERS OF THE SAGE ACCOUNTANTS CLUB.**

**CALL NOW FOR A FREE NO OBLIGATION
CONSULTATION. YOU CAN ALSO VISIT OUR
WEBSITE FOR MORE INFORMATION AND TO
VIEW OUR FIXED FEE CHARGES**



IN MEMORY OF ELIZABETH COXON-TAYLOR

I THINK I SPEAK for many Pembury people when I say how sad and shocked I was to learn that my friend, Elizabeth Coxon-Taylor, had died whilst I was away on holiday.

I have known Elizabeth for 20 years. Not long after I opened Denise Barnes Estate Agents in 1988, she came into my office asking if I would make some photocopies for her. We started chatting and she asked if I would be interested in sponsoring her charity, bringing Russian children to Kent to sing their folk songs. I agreed and from that moment on we became firm friends.

She would sometimes ring and invite me to lunch – she worried that I was working too hard and never got time to eat, and I would say, “I’ll come if you’re just making a simple sandwich”. She would agree and when I arrived there would always be a table laden with special vegetarian dishes and lots of vegetables, salads and desserts. Frequently, she would have other interesting guests and



they would all have to ‘go vegetarian’!

She was a great support throughout some of my problems, giving common-sense, advice, or just lending a sympathetic ear. It was a great day when she had her autobiography published and gave her talk at Pembury Library about her life. A few days before she was due to give her talk, she seemed quite nervous. I asked if she would like me to read what she’d written. She was almost in tears saying what a muddle it

was, but together we sorted it out.

It was nice to do something for Elizabeth for a change. The talk was very successful; she had a great sense of humour. I put myself in charge of selling her books, and soon sold a boxful! If you haven’t already read *Breweries, Ballet & Bedpans*, I urge you to do so. You’ll be amazed at her adventurous and fulfilling life.

Goodbye, dear Elizabeth. We shall all miss you terribly.

Denise Barnes

BUTTERFLIES

WHAT A DISASTER! I have never known such a poor year for these graceful and beautiful creatures.

Even in places such as the allotments, normally a site where many different species can be seen, the only one that seemed to be surviving our wretched summer was the Cabbage White. What is more worrying is what will happen to our already diminishing species if we have a repeat, weather-wise, next year?

Please go to any reputable nursery and they will have lists of butterfly-inducing plants, preferably high in nectar, and buy a collection of plants to go in now and improve the chances of survival for generations to come. Think of our shame if future generations of children could only look at pictures of what we take for granted now.

Come on, do your bit to save our butterflies.

Hugh Boorman



WALROND FULLER

CHARTERED BUILDING
SURVEYORS AND
PROJECT MANAGERS

01892 709600

STRUCTURAL SURVEYS
ADVICE ON LISTED AND
PERIOD PROPERTIES

Ballet, Tap, Modern & Jazz classes
for all ages from 2½yrs+

AMBERSIDE DANCE
STUDIO
Pembury

- Fun, Structured Classes
- Qualified Teachers
- Regular exam Sessions
- Bi-Annual Show
- Weekday & Weekend classes

Please Contact Victoria Mustill-King
Tel: 01892 724777 or 07961 017 032
Email: ambersidedance@aol.com

Belle Gardens

Established 14 years

- Consultations •
- Design • Planting •
- Maintenance •

by professionals
based in Stonegate
(near Wadhurst) East Sussex

Bella Ryan BA (Hons) NCH

Tel: 01580 201354

Mobile: 07973 488 135

e-mail: bella@bellegardens.co.uk

www.bellegardens.co.uk

The Best Beech Inn

Wadhurst



Tel: 01892 782046



Traditional English pub serving the
finest Shepherd Neame ales and lagers

- Food served 12-3pm & 6pm-9.30pm
Monday to Saturday
- Excellent menu lunchtime and evening
- Daily specials
- Sunday Roast from 12-6pm
- Relaxed atmosphere
- Bed & Breakfast available

Best Beech Hill, Wadhurst TN5 6JH

www.bestbeechinn.co.uk

SNIPPETS

KENT POLICE

Working together with Kent Police, making your home and personal possessions more secure is now easier than before. If you are interested in purchasing a shed alarm or a passive infra red system at a small cost, or a property marking kit which helps to deter thieves, please contact our Neighbourhood Watch Liaison Officer, Carey Amor, on 01580 711004 or email carey.amor@kent.pnn.police.uk

ORGANISING AN EVENT IN PEMBURY

Whenever you're planning an event, there are many things you should always consider; how you will advertise it, who you are planning to invite, and importantly, the date of the event. To ensure that your event does not clash with others in the village, please check the date in the online calendar, and contact Janet Ditchett on 822586 or email jmditchett@pt-c.co.uk.

PEPENBURY CHRISTMAS TREES

Christmas trees will be on sale at Pepenbury, in Cornford Lane, from Friday 28 November. Wreaths, cards, hampers and other gifts are also available from the gift shop. For further information, please contact Nigel Hill or Maggie Jenkins on 822168.

PEMBURY MUSICAL PICNIC

Are you thinking about the summer already? The Parish Council is planning next year's Musical Picnic on the Village Green and would like to hear from any musical group who would like to be involved with the entertainment. The Picnic will be on the evening of Saturday 20 June. Anyone interested should contact the Parish Council Office (details page 38).

PEMBURY YOUTH THEATRE ACADEMY

Pembury Youth Theatre Academy will be putting on a one-hour panto and variety show on Saturday 31 January 2009. It will begin at 7.30pm at Pembury Baptist Church. The first half of the show will be a pantomime, and the second half a variety show. Tickets cost £5 each. The Academy is open to anyone from the age of 4-14. For more information contact Dee on 825144.

CIDER PRESSING

Earlier this year the decision was made to produce a Pembury brew. This plan is about to swing into action with the first of the apples due to be pressed during the month of November. We will run an article in the next issue of the News about the progress that has been made. There are plans to run a community event, a "Ciderfest", sometime in 2009 when the brew will be available for sampling.

DICK WHITTINGTON RETURNS TO PEMBURY

THIS YEAR Pembury Players decided to get back to basics and put on a traditional pantomime, aimed at a young audience with a simple plot and plenty of silly jokes to brighten up a January evening. This excellent amateur performance of Dick Whittington, by Jim Sperinck, is presented in arrangement with Jasper Publishing with some local and topical variations thrown in to help the audience get their bearings.

In a nutshell, the plot soon finds Dick in disgrace for stealing from Fitzwarren's store, before being smuggled aboard the 'Saucy Sal'

ship to Morocco. He then returns to London as a hero, with a few adventures along the way.



The panto features several talented new actors from within the village and nearby in a new partnership with Pembury Youth Theatre Academy.

Evening performances at the Village Hall are scheduled for Thursday 8, Friday 9 and Saturday 10 January plus a matinee show on the Saturday. A warm welcome and a good laugh are guaranteed . . . Oh yes they are!!

James Whitehorn

PEMBURY DENTAL SURGERY



Nelis du Plessis B.Ch.D. (Pret)

67 Hastings Road, Pembury, Tunbridge Wells, Kent TN2 4JS

Tel: (01892) 823044

Committed to Quality Dentistry



G-Tech Computers

Home and Home Office PC
Support

Pembury – 01892 823994

Mobile – 07929 903126

E-mail address

info@gtechpcsupport.co.uk

Home Visits or Free Collection & Delivery
Full Support Services For The Home & Office User
No Fix – No Fee & No Call Out Charge
Virus Detection, Removal & Prevention
Upgrades To Your Existing PC
Broadband & Wireless Network Installation
New PC System Sales
Servicing and Preventive Maintenance

Steffan Keily

FOR ALL YOUR FENCING REQUIREMENTS



All types of fencing supplied and fitted
Close board, panels, palisade, post & rail, gates

FREE ESTIMATES FULLY INSURED
HOME: (PEMBURY) 01892-824048 MOBILE: 07941138060

P.L.H. DECORATING

Interior - Exterior
Painting & Decorating

01732 773414

Mobile 07941 068717

E-mail: plh.decor@virgin.net

PEMBURY PEOPLE – BERNIE BASS

LONG AGO, in ancient Greece, Athenian troops defeated a much larger Persian army on the plain of Marathon in 490 B.C., about 25 miles from Athens. Pheidippides, a soldier in the Athenian army, is said to have run to Athens bringing news of a Greek victory over the Persians. Legend has it that Pheidippides delivered the momentous message, “Victory” or “Nike”, before dropping dead. Not the most encouraging news for anyone interested in taking up running, but in recent years we have seen an incredible participation in events such as The London Marathon and The Great North Run. Marathons are hard, I have completed more than a few myself and as someone rightly said ‘Running a mile is like burning your finger with a match – running a marathon is like being slowly roasted over hot coals’. I am sure that you will have noticed our local athletes pounding the roads in ever-increasing numbers as they prepare for their own particular challenge. Many of us will know and recognise one of these as Bernie Bass, ticking along at a fair old lick on his regular training forays. I met Bernie to find out what drives him out in all weathers. His incredible running exploits and life story are the subject of this edition’s Pembury People.

Bernie was born in 1947 and his early years were spent in Hayes and Southall in Middlesex. When he was nine years old he contracted bronchial pneumonia and his parents were advised to ‘up sticks’ and move near to the coast to Hailsham, East Sussex. Having recovered, Bernie attended Hailsham School where he first discovered his love of athletics competing in track and cross-country. Leaving school, his first job was as an electrician before moving on to work for British Gypsum in Battle. During the 1980’s, Bernie set his sights on better employment opportunities in South Africa. Early in 1981 he secured a position at Goldfields and worked the gold mines at Carltonville, near Johannesburg. Next came a promotion to foreman at the Rooizberg tin mine and it was during this time that, at the age of 33, he began running again.

Joining a local club, it was only a matter of time before one of the most famous events in the world was brought to Bernie’s attention – The Comrades Marathon. At 55 miles long, the Comrades is a South African institution, internationally recognised for the body-sapping challenge it poses and the camaraderie it fosters among its thousands of participants. Run between the capital of the Kwazulu-Natal province, Pietermaritzburg, and the coastal city of Durban, the race alternates annually between the “up run” from Durban and the “down run” from Pietermaritzburg. The Comrades was run for the first time on Empire Day, 24 May 1921, and with the exception of a break during World War II, it has been held every year since. The race was the idea of World War I veteran Vic Clapham to commemorate the South African soldiers killed during the war. Clapham, who had endured a 2,700-kilometre route march through sweltering German East Africa, wanted the memorial to be a unique test of the physical endurance of the entrants.

Bernie’s hard training of up to 150 miles a week gained him an amazing silver medal standard, the first in his club to have achieved this in his initial attempt. Silver medals are awarded to competitors who finish outside the top ten and under 7 hours 30 minutes, this against 12,000 competitors. Bernie paced himself well despite ‘old timers’ telling him to slow up. Finishing in Durban he was elated with his remarkable time of 7 hours 25 minutes and this was recognized



continued on page 16

PEMBURY PEOPLE – continued

the following day with headlines in the papers celebrating his achievement. This acted as a springboard for Bernie's talents and he was selected for an Anglo-American team competing nationally in many events. A brief sojourn back in Blighty in 1990 to run his own business saw no running, but upon returning to South Africa in 1994 he swiftly signed with a local running club, Glenwood Harriers, and began training seriously again. The Comrades was very much in his programme along with the Two Oceans event over a course in Cape Town covering 32 miles. He managed to accrue a total of four silver medals and was selected to run for South Africa in the marathon at the World Veterans Championships. During this time, Bernie would rise early and train at 5.30am with his club, often over distances of 36 miles. His best Comrades run was in 1997 finishing in 6 hours 50 minutes – seven completions in total with four at silver medal standard.

Bernie returned to England in June 1999 and started work at Pembury Hospital. Romance was soon in the air when he met the lovely Rosie at the hospital and they were married in September 2005. The couple are extremely active at The Baptist Church and Bernie's recent completion of the Blackpool marathon raised £800 for an orphanage in Maputo, Mozambique. I am sure you will join me in wishing Bernie every success with his athletic aspirations and we look forward to hearing of further amazing exploits as he pounds the long hard road.

Paul Barrington-King

PEMBURY DAY CENTRE

MEMBERS OF the Day Centre remember the wonderful day we had in Hastings. We enjoyed coffee 'al fresco' at an Italian coffee shop before a saunter along the seafront. We couldn't visit Hastings without a fish and chip lunch, which we did by taking over the Seagull restaurant, who were so helpful to us and our wheelchairs.

The Day Centre have just received a grant from Sport Relief for "Movement to Music" to pay for a qualified keep-fit instructor to help us chase the cold away! Each week we will be giggling about the armchair contortions we will attempt in our bid to stay looking younger and living longer. Each session will be followed by a wholesome home-cooked two-course meal.

Packed into the day (10am to 2.30pm) at the Day Centre we have various other events planned,

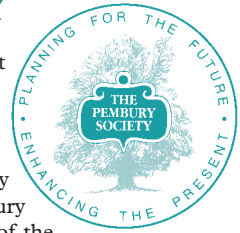


such as sharing World War II memorabilia and memories with Pembury School, a talk from the Pembury Fox Project, a trip to Broadview Gardens at Hadlow and regular visits by a foot practitioner and an opportunity to sit on Santa's knee in December!

If you, or a friend, are over 60 and would like to join us, we meet at Pembury Baptist Church every Tuesday during termtime. Contact Ada Fidler on 822502 or Helen at the Church Office on 825590, or just turn-up. Each session costs just £3.

Helen Nevison, Pembury Baptist Church Community Projects Worker

REPORT OF THE PEMBURY SOCIETY



THE PEMBURY Society held their AGM recently. It was with regret that the resignation of the secretary, Jan Cook, was received. She has held the position for several years and was thanked for all her hard work. She will, however, remain on the committee.

In his Chairman's report, Ken Watts spoke about the Pembury Community Partnership's aims to pursue projects that would bring the people of Pembury closer together. The Pembury Society has long noted that Pembury is one of the few villages in the area that does not have a village sign and feels that such a sign, prominently displayed on the Green, would represent the community spirit that the Partnership hopes to nurture.



Les Cook, the society's planning officer, noted the considerable downturn in planning applications affecting the village over the past year. He also led a general discussion on Tesco's proposals to redevelop their store at Woodgate.

After coffee, we had a very interesting talk from Tom Younger, our Community Support Officer, accompanied by Nick Brown, the Police Community Support officer for Pembury, Brenchley and Matfield. Apart from some very useful general advice on how to keep our houses secure, they also

explained how they see themselves fitting in to Pembury life. Mr Younger works very closely with the police, but his role within the community is much wider than just dealing with anti-social behaviour. We may sometimes feel that the police do not listen, or take notice of low level crime, but they assured us this is not so. They also emphasised the importance of reporting all incidents as, if they are not reported, they cannot be counted or investigated.

Kathryn Franklin, Publicity Officer

KENT COLLEGE

KENT COLLEGE began the term with the opening of their new science laboratories – the Darbyshire Wing, opened by the Vice Chancellor of the University of Kent, Professor Goodfellow CBE. It will provide both Preparatory and Senior School students with fantastic facilities for bigger and better experiments! It will also provide Sixth Formers with better laboratories which will help those keen on continuing with this subject in higher education.

The school celebrated its 122nd Anniversary; this year the guest speaker was Germaine Greer who provided an interesting and humorous account of her latest book.

In September, both Preparatory and Senior School staff, students, parents and a dog or two, joined in the Annual Sponsored Walk. All proceeds raised went towards the Shelterbox

Charity and The Kent College Nepal School Charity.

On the performing arts front, audiences were treated to a spectacular operatic performance of Dido and Aeneas at Pembury Old Church. Student musicians showed off their talents with a tea-time concert. Auditions are still continuing for the whole school play which promises to be fantastic.

In Sport the U11 Netball team and U13 Cross-Country team performed very well, with the Cross-Country team winning the District Championships in the IAPS District Cross-Country event.

Trips this term have included the Houses of Parliament and RNLI in Newhaven.

Emma Chandler



Animal & pet feeds, saddlery, clothing, accessories, bedding and much more.

- Free & Easy Parking
- Helpful Staff
- Friendly Advice
- Delivery Service

**6-7 Spa Industrial Park, Longfield Road,
Tunbridge Wells, Kent. (Opposite Kwik Fit).**

Tel: 01892 532619

www.broadfeed.co.uk

Open 8.00 – 5.30 Monday to Friday, 8.30 – 4.00 Saturdays

FREE ESTIMATES

- EXTENSIONS
- HOME IMPROVEMENTS
- DECORATING

Contact

Alan Clarke of

CWC BUILDERS LTD

13 High Street, Pembury TN2 4PH

Tel: 01892 823932

E-mail: cwcbuilders@aol.com

Company Reg. No. 6392201

CLARA AND WILLIAM HENRY BURGESS

WHEN RESEARCHING my family history in the 'nineties, I was sad to see that where my Grandparents were buried in Lower Green Cemetery was a bare patch of grass. Perhaps my relatives were too poor in 1944 to afford a memorial. Sixty-four years later, I have been able to remedy this and visitors to the Cemetery will find a new headstone and curb, which contrasts with the other ageing memorials.

William Henry was, in many ways, a remarkable man and a well known figure in Pembury. His ancestors hailed from the little village of Warbleton, in East Sussex, at least as far back as 1500. He was born in Wadhurst in 1854, one of a family of ten (his twin sister dying aged 29). He worked on the land in Wadhurst and Ticehurst before his marriage to Clara Weeks in 1887. There were five children of the marriage: four boys and a girl; my father, Frank, being the eldest.

The family moved to Pembury around 1890/95 and lived at Cornford Cottages in Cornford Lane, which were probably tied to a local farm. These cottages are still there, though much modernised.

They later moved to 2 Grovehurst Cottages on the London/Hastings Road; presumably linked to the Grovehurst Farm Estate of Richard Clifford Smith J.P. where William acted as Stockman. These cottages are also still there, modernised and renumbered 65-67 London Road. The Estate itself is long gone, having been bisected by the A21 Pembury By-Pass.

My father attended Lower Green Board School where, together with my other relatives, he was taught by the Misses Morgan, Ratcliffe and Jarvis, who also taught me from 1933-38. As a child, he remembers running up Cornford Lane to see the first motor car in the village, owned by a Doctor. Later he worked as a manservant and footman for Lady Adair at 'Heatherton' opposite Grovehurst Cottages. She gave him a reference to join the Navy in 1908 when he was nineteen. Whilst there, William's other sons, Percy, Ernest and Sidney, joined the Forces in the First World War and survived. Percy became well known in Pembury and was in the Home Guard in the Second World War.

Sometime in the 'twenties, my Grandfather moved to Butt's Cottages, Cousley Wood, where he continued to work until he was over 70. He and Clara returned to Pembury around 1930 and were granted a place in the Charles Amhurst Almshouses. There he lived at No. 2 until his death at the age of 90.

I saw a lot of my Grandparents between 1932 and 1938 as I frequently had to walk from school to stay with them to await my parents' return from Tunbridge Wells. The Almshouses were very primitive in those days: no running water, no bathroom or kitchen and a shared latrine outside. Cooking and heating were from an old black coal-fired range in the living room. There was, of course, no gas or electricity, only an oil lamp supplemented candles – a highly dangerous situation for eighty-year olds. The narrow stairs led directly into the only bedroom through a hole in the floor. How my Grandparents managed I cannot imagine, but it was cosy.

The Marquis of Camden relinquished control over the Almshouses to the Charity Commissioners in 1950 and they became the responsibility of a small group of Trustees who substantially modernised them. They were re-designated Numbers 9 to 19 Hastings Road.

I must have been a trial to my Grandparents. Granny was a kind and gentle soul, but I took delight



continued on page 20

CLARA AND WILLIAM HENRY BURGESS – continued

in creeping behind her chair and making her jump. This was the only time I ever saw my Grandad angry. I enjoyed my visits: making toast by the open fire, playing with Grandad's ear trumpet, waiting for the oil lamp to be lit on winter evenings, swinging on the front gate and watching the streams of traffic along the London/Hastings Road, especially on Bank Holidays and at weekends, going to or coming from the Coast.

My Grandfather was largely a non-drinker, although he would sometimes indulge in a herbal cigarette. He loved gardening and there was always produce in the large back garden. He was a dedicated reader of the large family Bible and would sit for hours in the front window reading beneath its array of geraniums. Although he was a Baptist, he used to go over to St. Peter's Church on Sundays and on special occasions to 'blow the organ'. The bellows had to be pumped by hand before the advent of an electric pump. He was frequently to be seen on the village green where he would sit under the old chestnut tree.

My parents moved from May's Cottages, Romford Road, in 1938 to a Council House in Rusthall. Clara had already died and my mother and William's other daughters-in-law shared responsibility for his care. He was fiercely independent and insisted on remaining in the Almshouse. I can still see his bent figure coming down our road in Rusthall with his laundry to be washed, even though this entailed taking two buses each way through Tunbridge Wells.

Whilst it seems unlikely that anyone in Pembury will remember this grand old man, his memorial is now in Lower Green for anyone who cares to visit the Cemetery.

Raymond Burgess

PEMBURY IN THE PAST

IN THE LAST issue we printed a photograph taken in 1988 of a WI Ladies trip to Wickenbreaux. Some of the ladies have been identified. Do you recognise yourself or your friends or know who any of the other ladies are? If so, contact the editor.



*Win Murtagh, Joan Curd, Beryl Greenwood, Eileen Watson, Edith Scadden, Lilian Bell, Jenny Shipley, Lily Hammond, Isabel Callum, Jessie Holland, Mabel Luck, Sybil Gummery, Marian Brearly, Doris Edmondson, Millie Harris, Kath Drury, Chris Russell, Pat Mercer.
(There are two others who may be there – Connie Yardley and Daisy Curd.)*

PEMBURY VILLAGE MARKET

THE VILLAGE market and coffee shop are held every Tuesday morning in the Village Hall between 9.30am and 11.30am. There is a wide range of stalls each week, some of which support local charities.

The fresh produce on the fruit and vegetable stall mainly comes from local growers and is often organic. The home-made cakes and savouries are always popular and we also have a variety of jams, marmalades and chutneys.

If you are looking for gifts, visit the card stall for that special occasion. They are all beautifully made and you can order them. The hand-crafted jewellery is suited to all ages.

There is a very good second-hand book stall and a good bric-a-brac stall, often with many new items. Once a month, there is also a good-as-new toy stall.

With Christmas fast approaching, our stalls will be selling more gifts, especially Christmas wreaths on the seasonal plant stall. Or you can just come along for a tea or coffee and meet up with friends.

Tom Younger, Pembury's Community Warden, and occasionally Nick Brown, our local PCSO, have surgeries here each week, as does a Town & Country representative. June Crowhurst and Mike Tompsett have monthly surgeries, also to help with any problems.

If you would like to rent a stall for a Tuesday morning, please phone 823413. Stalls cost £2.50.

Karol Young



PEMBURY SCHOOL RAISES £2,044 FOR AFRICA

FROM 6-20 OCTOBER, Pembury School children gave their all in an attempt to raise £2,000 for the Home Sweet Home Appeal, the 5th the school has run for the Iris Orphanage in Maputo, Mozambique.

13% of children in Mozambique are orphans which, if in England, would mean two whole classes out of Pembury School's 14 would be orphans. The children were challenged to build a home for Chiko, who was orphaned when he was four and has grown up at the Iris Centre. The challenge was spurred on by a local business, Red and Green Marketing, who promised to match the amount raised up to £2,000.

The school playground became a hive of activity for the two weeks with cake and bric-a-brac sales

as well as numerous sponsored events taking place both at school and home. Some wonderfully creative houses were entered in the Build a House competition, made out of cake to Lego, cardboard to papier-mâché. Parents let their creative juices flow in a Poetic Parents competition.

With Red and Green's generous gift of £2,000, the grand total of £4,044 was raised. Well done Pembury School for giving Chiko a present that will change his life forever. A big thank you to Red and Green, whose gift has meant that Pembury School will build not one house, but two. Chiko and Hermione will soon have their dreams come true, their own Home Sweet Home.

Christine Sayell





Kent College Pembury

An independent school for girls aged 11-18

Nurturing Confidence, Inspiring Success



Building self-esteem is at the very heart of our ethos. All girls get a chance to shine, try something different, feel good about themselves and develop new and existing talents. Exciting opportunities to develop confidence are an integral part of school life: overseas music, drama and sports tours, an Australian exchange, 65 extra-curricular activities, and leadership courses, to name a few. Our aim is to equip students with the confidence, skills and positive attitude to succeed in their GCSE and A-level examinations, university and in their chosen career.

“The School has many strengths . . . teaching is very good overall, and often excellent, enabling pupils to achieve very well and make very good progress. . . excellent wide-ranging programme of extra-curricular activities. . . very high levels of pastoral care.”

Independent Schools Inspectorate Report

Kent College Pembury, Old Church Road, Pembury, Tunbridge Wells TN24AX
Tel: 01892 822006 Email: admissions@kentcollege.kent.sch.uk www.kent-college.co.uk

YOUR COUNTY COUNCILLOR REPORTS

IT'S BEEN AN interesting summer. I don't usually have time for holidays, but this year my wife booked a week for us on the Norfolk Broads. Although the first few hours of piloting a large cruiser were a little daunting, once I got used to the controls it was very relaxing, and a week of navigating the broads still only took us ten minutes away by car from where we'd started!

On the last day, the Leader of KCC, Paul Carter called me to ask if I would leave my role as Cabinet Member for Adult Social services, and take responsibility for Kent's Regeneration and Economic Development programme. It's a real challenge; in the next decade or two Kent will somehow have to find space for around 125,000 new houses, occupied by some quarter of a million new Kent residents. The County Council are fighting hard to get Government to put in the infrastructure, because without the roads, sewers, water supplies and transport we can't build real communities. We also have to make sure that there's real employment, and that we don't just create dormitory towns.



On a more local note, isn't it great to see the new lollipop lady down at Pembury Primary School? We'd tried everything – public meetings, Radio Kent, BBC TV, the Courier – and just when we thought the vacancy wouldn't be filled, I'm told that the last "In Touch" newsletter from your Pembury Councillor Team brought a successful application! It's excellent news and I'm really pleased for the children with the darker evenings coming.

You'll probably have heard locally, or read in the press recently, about the "Pembury Agreement". I've negotiated a reward fund of £25,000 with Kent County Council if Pembury's various organisations – Parish Council, Churches, Scouts and Guides, school etc, can meet a set of targets which will improve the quality of life around the village. We've started to define the target areas through the Pembury Community Partnership, and the targets will involve activities with and between older and younger people, and building more volunteers. I'm told that this will be one of the first agreements of its kind in the country, and it will be closely watched.

At the time of writing this piece, the new Tunbridge Wells Gateway is about to open in the former McDonald's building at Fiveways in the town centre. Kent County Council opened its first Gateway at Park Mall in Ashford four years ago, delivering joined up services from nearly 40 different public sector agencies. In Tunbridge Wells, the Gateway is a real partnership between the County and Borough Councils, open six days a week from spacious and modern retail premises. Why not go along and visit?

And a final reminder – you can keep track of what's going on in Pembury, and what your County Councillor is doing for you every day by visiting my blog site at <http://kevinlynes.wordpress.com> or my website at www.kevinlynes.com.

If you want to talk to me about anything, please call me on my mobile – 07834 308015.

Kevin Lynes



Heritage

Garden maintenance & landscaping specialist

All garden maintenance and landscaping work undertaken, including lawnmowing, weeding, hedgecutting, pruning, turf laying and planting. Also paving, brickwork, stonework, timberwork and water features. Friendly and reliable service.

Contact Alex Walsh:

Mob: 07794 070261 • Home: 01959 577684

24Hr Call Out King & Country Plumbing Services

Full bathroom & shower installation
Drains & blockages cleared, Pumps & valves,
Radiators & pipes, Immersion heaters, Leaking taps & burst pipes,
Free estimates & honest advice

Tel: 01892 822721 Mob: 07939 667871

Patty Young

ITEC Qualified IPTI

Massage Therapist

Massage therapy for total relaxation and well being

deep tissue massage - lymphatic drainage - Bowen technique

18 years experience

01892 543656



Caring, professional, counselling in a comfortable, confidential setting.

Karen Hannam Dip Counselling
MBACP ACC

07943 777327

karen@hopecounsellingkent.com
Contact me for a free initial assessment

COMPASSIONATE HELP, PROFESSIONAL CARE

KENT POLICE MALE VOICE CHOIR

SATURDAY 27 SEPTEMBER saw some 130 of Pembury's community gather in St. Peter's Upper Church for a recital by 30 members of the Kent Police Male Voice Choir.

The Choir impressively filed down the central aisle and easily slotted into their positions. Musical Director David Vening followed to his conductor's lectern.

After singing the National Anthem, their programme set off at a good pace with Scott Joplin's "The Entertainer", and after a wonderful mix of music from different countries, including solos and a duet, the first half ended resoundingly with an arrangement of "The Saints Go Marching In".

The Interval gave the audience a chance to have a drink and a chat with members of the choir. A varied second half included songs by Flanders and Swan and Mendelssohn, and concluded with a Fantasia of English Melodies. Altogether an enjoyable evening.

The next concert at St. Peter's will be on 30 May 2009, when we will have a return of the internationally known organist Carlo Curley, who played here on the St. Peter's organ when it was first installed in June 1994. More information about that concert will feature in the Spring Issue of the News.

Derek Hollweg



PEMBURY GARDENERS' SOCIETY AUTUMN SHOW

THE GARDENERS' Autumn Show was held on 13 September. It is normally our largest show of the year, and this year was no exception. 36 exhibitors produced 223 entries. The star, of course, was the splendid display of dahlias and chrysanthemums; the weather had been windy and wet but the blooms looked immaculate. There were eight Floral Art entries; less than usual but themes of autumn produced outstanding exhibits.

Six children entered their vegetable animals and we had a scary marrow whale, two squash hedgehogs, a bushy celery-tailed monster, a creepy spider and a beautiful giraffe. Thank you everyone for having a go.

The cookery section was large this year. There is a list of 13 different cookery or wine items which can be entered. It changes slightly for each show and is set out in our schedule or catalogue, available early in the New Year. The vegetable section had three large displays of grouped vegetables, a two-and-a-half pound onion, huge leeks, celery sticks, red tomatoes and smooth-skinned potatoes.

The handicraft section was bigger than usual and included a turned wooden bowl on a stand which looked really professional. All this, plus cake, plant and book sales, refreshments and a raffle made for an excellent afternoon. Flowers and veggies get auctioned off at the end of each show.

Our other recent activities have included a talk on 'Vertical Gardening', a line-dancing Halloween evening and a coach outing to Canterbury in December. To join in at our next show, ring me on 822031 for a schedule, fill in the entry form and return it. You can enter classes at the show without being a member, but it's worth joining and very cheap - £1 for over 60s annually and £2 for an adult, adult couple or family. Do come and see our flower shows, and bring the family. Perhaps we can inspire the next generation of gardeners.

Shirley Smout





*Penumbra Blinds
& Solar Control Ltd*

YOUR LOCAL BLIND SUPPLIER

<p>Manufacturers & Suppliers of:</p> <p>INTERNAL BLINDS Roman Venetian Roller Vertical Pleated Wood Slat Velux</p> <p>EXTERNAL BLINDS Dutch Blinds Awnings Canopies Free standing Pabola</p> <p>Manual or Automatic</p> <p>SOLAR CONTROL & SECURITY WINDOW FILMS</p>	    	<p>Unit 2 Abans Farm, Romford Road, Pembury Tunbridge Wells TN2 4BB Tel:- 01892 825522 info@penumbraoblinds.com www.penumbraoblinds.com</p>  
---	---	---

Local To You

CV Concierge

To much To Do & Too Little Time To do It?...

- We Can Help!**
- We Can Organise To**
- Declutter & Organise Your Belongings**
- Do Your Shopping/Run Errands**
- Organise A Special Family Event**
- Help With Relocation**
- And Much More.....**

Visit Our Website
www.cvconcierge.co.uk
Telephone – 07968 978767

The national agent with local knowledge.

Get the best of both worlds with YOUR MOVE.

**Contact your local branch on 01892 825355*
or visit our website**

www.your-move.co.uk



Moving made easier

*Calls may be monitored and/or recorded for training and/or data protection purposes.

MY PLOT

LAST SUMMER, from all my marrow, pumpkin and squash plants, I grew just one, small courgette! Why? Maybe it was the cool weather? Or maybe it was fighting for space in amongst millions of meadow flowers? It certainly wasn't lack of water. There was one other tiny courgette which was ruined by slugs and then, when I'd given up all hope, the late sunshine in September and early October suddenly set about five butternut squashes. Despite the meadow cramping it, the squash plant just scrambled over the top – just as I had hoped they all would. Yet, cruelly, the frosts in late October mushed the plants before the squashes could swell. And as for the cucumbers – what a dead loss!

My Victoria Plum tree cropped heavily again but nearly a month early. Usually it is a September treat, but this year they had peaked before we'd even got back from holiday at the end of August. Was this a symptom of the funny summer as well?



I did really well on turnips, beetroots, parsnips and carrots this season – which looks like a pattern to do with fat, edible roots liking cool, damp weather to me. I also grew lettuce the size of medicine balls. And runner beans which were well over 40cms long but were still edible.



What I failed to do was produce even one tomato. The plants gave up when we had a few unseasonably cold nights in mid summer. The stems turned black and the green tomatoes went brown. In fact, they did a perfect impression of November! Meanwhile my neighbour who makes copious use of copper-based fungicide, grew truck-loads of tomatoes which didn't die from the frost.

That could mean that I'm in a frost pocket and he isn't, but more likely is that when his plants got stressed by the cold there was no infection waiting to take advantage, whereas my pathetic plants..? Well, when they got stressed, they caught every germ going and dropped dead!

The best thing for me all summer was a wonderful supply of sweet peas (as opposed to sugar peas – my eight year-old gets confused over this). For two and a half months or more, I had about fifty flowers, every other day. It was just beautiful and I must thank my supplier of seedlings (Hughie) for bringing me such loveliness. And 'Yes, please' to any spare plants next spring.

Caroline Mazzey



PEMBURY SCOUTS SURVIVAL WEEKEND CAMP

SXTEEN SCOUTS, their leaders and three dads spent the weekend of 24 October at Broadstone Warren Scout Campsite in the Ashdown Forest.

The boys and girls built their own shelters made out of branches of trees, ferns and polythene sheets to make them waterproof. This being successfully accomplished, they slept in them on the Saturday night. All the cooking was done on open wood fires without using modern cooking utensils, except for a penknife. They made kebabs, pork chops cooked with vegetables in a parcel, baked apples and the inevitable sausage on a stick.



On Saturday afternoon they all had a whale of a time abseiling and rock-wall climbing; even some of the leaders were brave enough to have a go.

These activities are only possible with the help of all the Leaders and parents. A big thank you to all.

Mike Cartwright, Group Scout Leader

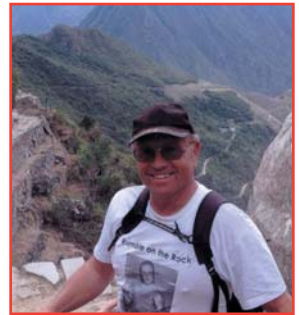
A NEW HOUSE AND THE ULTIMATE CHALLENGE

MY NAME IS Ray Brittle. My wife and I moved to Pembury from London last year. I am a former Boxing Champion and I'll be 60 this year.

Last year, I spotted an advert in the Evening Standard for a trek to Peru for the Anthony Nolan Cancer Trust; the Ultimate Challenge. At 59 and 167 lbs I started to walk around Pembury. After many years of no hard training or walking, it was hard to begin with, but soon it started to get better. I lost three stone as the months went on and reached my target of £3,000 sponsorship.

Then, 10 weeks before I was due to go, my daughter became seriously ill. I had no intention of going to Peru, but my daughter insisted.

After a 14-hour flight, and a chance to acclimatise, we met our guides in Chilipahua. We headed towards Watuq'asa Pass, to Ankascocha. Then we ascended up and over Pampaq'asa Pass before continuing down the Quilca River to the mighty Mount Veronica. In the Quilca Valley and other base stops, we stopped at different schools to meet teachers and children to give them books, pencils and pens. We continued across open farmland and passed through gorges with stunning cascades of flora and even spotted the mighty condor! We enjoyed our first sighting of the Sacred Valley, camped on the edge of the Urubamba River, before trekking to Wiñay Wayna to the famous Sun Gate off the Inca trail. We finished the trek on top of the steps of Machu Picchu. After six hard and splendid days of trekking to the top, my phone rang for the first time in nine days. It was a text from my daughter saying congratulations.



I completed the ultimate challenge and enjoyed some of the most breathtaking scenery in the world with 26 wonderful people who each raised £3,000.

The ultimate challenge this year is to find 20 people of any age to take part with me in order to raise money for the Hospice in the Weald. Anybody wishing to take part and train for this event with my wife and I, please phone 822811.

Ray Brittle

PEMBURY BOWLS CLUB



THERE WERE mixed results during the season for the various league teams but our friendly matches against other clubs both home and away were much enjoyed, whatever the outcome. A grey overcast 7 September saw ten matches being played on Finals Day at the club, followed by a welcome barbeque. Our green was closed early this year in order that remedial work could be started, to bring the green back to good condition after two years of enforced neglect, the results are already there to be seen and next year we hope our green will be in good condition.

Next year will be our 80th year in existence and to start our anniversary year off we are holding a 50/60/70's Valentine's Dance at the Village Hall on Saturday 14 February 2009. Music will be provided by the acclaimed band "Ricochet" and anyone who has heard them knows they are great to listen and dance to. Tickets priced at £10 will be available nearer the time from myself and club members, a wine and beer bar will be available, but bring your own nibbles. We are hoping that the villagers of Pembury will support this event whether interested or not in bowls, as a great evening is guaranteed.

Barbara Scholten, Competition Secretary

DIEPPE TO MARSEILLE – 6-DAY EPIC BIKE RIDE

IN JULY 2009 a group of bike riders from Pembury will be embarking on a gruelling ride across France, from Dieppe to Marseille. The full team is yet to be established but Mike James, Trevor Crysell and veteran long distance racer and rider Paul Barrington-King have already committed themselves to the endeavour along with Pete Lester who heads up the support team.



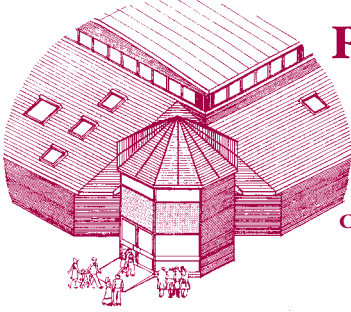
The aim is to complete the coast to coast route in six stages in just six days. This will mean the riders having to complete over 120 miles each day with a total of 41,000 ft of climbing. The route will also include riding over the daunting 16-mile mountain climb of Mt. Ventoux in Provence. The mountain will also be tackled in next year's Tour de France and is a legend in the sport of bicycle racing, with riders not only struggling with the almost constant 10% gradient but also having to endure searing heat and vicious Mistral winds that batter the exposed summit. After tackling this monster climb on their last stage, they then have a further

100 miles of more modest terrain that day before reaching their destination in Marseille.

So if you ever wondered what it might be like to ride the Tour de France route, these local lads from Pembury should be able to give you a fair idea after their epic adventure next year. A website has been set up for the Coast to Coast ride (<http://www.freewebs.com/coast-coast>), which shows the contact details for the organiser, the route, team member profiles and also includes a blog of their training progress throughout the year.

If you are up and about early enough at the weekend you might also catch a glimpse of the team on their weekend rides, starting at 8am on Saturday and Sunday mornings from Pembury Village Green. Anyone can join in these rides, details on the website, although it is advisable to have reasonable fitness and a road bike. We currently have a mixed bunch of riders on the weekend runs from tri-athletes, ex-road racers, sportive riders and fitness riders. If you are interested, contact Mike James by emailing mike.james67@btinternet.com

Mike James



PEMBURY VILLAGE HALL

AVAILABLE FOR HIRE

Facilities include Main Hall, Meeting Room, Stage, Kitchen, Changing Rooms and Services.

Ideal for Club Meetings, Weddings, Anniversaries, Corporate Functions, Shows, Dances, Musical Events, etc.

CONTACT BOOKINGS MANAGER –
RACHEL WINDUS ON 822837



Rapid, Safe & Permanent Weight Loss

I lost 10 stone in 10 months
now I can help you to lose your excess weight with

- A personalised, medically based, healthy eating plan.
- No pills, shakes or injections.
- Confidential one to one support.

For a Free Consultation please call

LB Well Being **01892 826196**

or email: louise@lbwellbeing.co.uk



weight loss & well Being

www.lbwellbeing.co.uk

Dawn Hodgson MSSCh MBChA Chiroprapist

- Professional Advice and Friendly Care
- Diabetic Assessment & Maintenance
- Verruca Treatment, Natural Remedies or Chemical
- Ingrowing Toenail Care
- Treatment for Fungal Infections
- Day and Evening appointments available



7 Greenleas, Pembury TN2 4NS
Tel: 07761 583 756
01892 824916

Full range of
Footcare products,
including 100% Natural
and Diabetic Friendly

Discounts for over over 70s

HSA 50% refund available

GREEN GARDENING – HAPPY HEDGING!

MIXED NATIVE hedges – want to have a go? Winter is a perfect time to give your hedge the loving attention it deserves, or how about planting a new one?

Hedges are a marvellous creation. They serve as living barriers wherever needed; pleasing to the eye, vicious to a trespasser and accommodating to wildlife. Native hedge rows provide a rich source of food and perfect shelter for birds and small mammals. They also make green corridors linking otherwise isolated wildlife habitats and enrich local biodiversity. Hedges disperse wind, improve soil and hide unsightly views. They have been with us since Stonehenge days; and are still thriving. In recent years, an increase in public interest and available grants has given hedges a new lease of life.

We are incredibly lucky in Kent; we have the oldest hedges around us, marking the boundaries of orchards. They are such an inspiration! With quite a few skilful hedge layers in the county, an excellent tree nursery in Heathfield and readily available advice from the BTCV, anyone can have a go at creating a mixed native hedge in their garden.

I am certainly planning to do that in the coming weeks. I tried last year, but didn't really know what I was doing. So this year I went on a hedge-laying course to learn how to do it properly, and bought my very own vintage billhook. I discovered that there is much more to it than sticking a few saplings in the ground in the hope they'll turn into an attractive hedge.



To achieve good results, you need a healthy mixture of native shrubs and trees, about 50% hawthorn for good structure, the rest being hazel, crab apple, elm, ash, field maple, spindle, guelder rose, beach, plum, holly, hornbeam, wild privet, whitebeam and dog rose. For smaller gardens, concentrate on shrubs and avoid trees (although their growth is restricted, they may still be too overwhelming). If there is no livestock nearby you can incorporate yew and box for an evergreen effect. There are no limits to how creative you can be with hedges: leaf colour and texture, berries' shapes, the profile of trunks and branches; and some of the most stunning blossoms of all kind – there is a lot to play with even if your hedge is only a yard long. For a most eye-pleasing effect, create a support structure from vertical hazel posts bound by horizontal branches for stability. Plant trees and shrubs alternatively, 18 inches apart. Choose the ones that have more branches that you can weave into the hazel structure.

If you already have a hedge, then maintaining it as thick as possible becomes your priority. It could be achieved by pruning, filling in gaps or pleaching. When pruning, take care not to damage the stems. Torn stems, like the ones often seen by the side of the road, are not only unsightly but also highly prone to disease and dieback. Wait until the berries have all been harvested by wildlife. February is best. Don't wait for spring – birds love to nest in hedges. If you want to fill in the gaps with new plants, go 'green', choose natives, be creative. And as for pleaching, do not attempt it unless you've been trained. Better hire a professional and learn from him (or her) onsite. BTCV (British Conservation Organisation in Ashford) can recommend you a skilful hedge-layer and give you tips or advice specific to your needs (Mike Phillips 01233 666519; kent@btcv.org.uk). So what are you waiting for? Happy hedging!

Masha Odintsova-Bayles



'Outstanding' is a word used frequently in our 2007 ISI inspection report.

So when we claim to be one of the country's top independent schools for girls don't just take our word for it.

Read it for yourself at www.walthamstow-hall.co.uk



WALTHAMSTOW HALL
SEVENOAKS KENT

Tel: 01732 451334 www.walthamstow-hall.co.uk

Walthamstow Hall is a registered charity founded in 1838 for the education of girls.

OUTSTANDING

CHURCH SERVICES OVER THE CHRISTMAS PERIOD

ST PETER'S

14 December	6.30pm	A Victorian Christmas by Candlelight – Old Church
17 December	2.30pm	Pepenbury Carol Service with the Bishop of Tonbridge – Upper Church
20 December	4pm	Carols, Candles and Coffee – Upper Church
21 December	9.45am	Nativity Service – Upper Church
	6.30pm	Parish Carol Service – Upper Church
24 December	4pm	Crib Service – Upper Church
	11.30pm	Midnight Mass – Upper Church
25 December	8am	Holy Communion – Upper Church
	10am	A Celebration of Christmas with Communion – Upper Church
	10am	Communion for Christmas Morning from the Book of Common Prayer – Old Church
28 December	11.30am	A Service of Carols and Readings – Old Church
4 January 2009	9.45am	Epiphany Service with Christingles – Upper Church

ST ANSELM'S

21 December	10.30am	Fourth Sunday of Advent
24 December	6pm	Carols and Readings
	6.30pm	Mass of the Vigil of Christmas (for Children and Nativity)
25 December	10.30am	Christmas Day Mass
28 December	10.30am	Mass of the Holy Family



PEMBURY BAPTIST CHURCH

14 December	5 & 7pm	Carols by Candlelight Service
20 December	7pm	Christmas Party at Village Hall
24 December	11.30pm	Christmas Eve Reflective Service
25 December	10am	Christmas Day Family Fun Service

CAROL SINGING

The churches of Pembury will be carol singing outside the Camden Arms on 17 December at 7pm. All proceeds will go to the Hospice in the Weald.

All are invited to join in!

For more details call 825590 or 824761

A REPLY TO 'CRIME IN PEMBURY'

AFTER READING 'Crime in Pembury' in the Autumn issue of the Pembury Village News and working in the security industry, I consider that we should not be worried to sleep in our beds at night but that we need to help to reduce crime in our area.

Criminal damage is nearly 39% of all crime reported locally, but what is 'criminal damage'? It is an umbrella title covering damage to property and vehicles and is often considered by authorities as a 'minor crime', but it gives an area a feeling of insecurity caused by fear. It can also be seen as a catalyst to other forms of anti-social behaviour and crime.

As members of the community, we all need to protect our property, which is not always easy. Most people work hard, save up and enjoy a well earned holiday perhaps in a sunnier climate. A number of years ago it was possible to arrange for the local police office when out on foot patrol to look into your property to ensure its safety. But as time became pressurised, these tasks slowly disappeared.

I believe that "presence is protection" and would like to offer my community an opportunity which I consider is lacking in today's society. For more information, contact Simon Oakley at A1 Security Services on 07857 897668 (24 hour).

Simon Oakley

CRIME IN PEMBURY

I KNOW IT'S depressing to be talking about winter and dark evenings again but you never know, the weather might be better than the awful summer we have just had.

Sadly, unless we take extra precautions, it is a sure bet the crime figures will rise again. The last quarter, July, August and September, has shown an increase from the previous quarter from 50 to 68 reported offences. Criminal damage actually dropped from 18 to 16 but burglary, fraud and forgery, mainly in the High Street, and theft offences doubled and nearly trebled in one category.

Please don't forget what I have said many times in the past, be over cautious. Don't leave goods, handbags, mobile phones, even laptops in some instances on display in your car or in your home. I know that you think that I am being over cautious but when you are indoors or in the back garden, lock your doors.

Please enjoy your Christmas, but don't let some uninvited persons enjoy it at your expense.

Please assist the police by notifying them of anything suspicious and in the event of an incident, get that reference or incident number. In the event that you get a negative response from the police, I need to know. Please watch out for those around you who are on their own. Invite them round for a drink or more but at least make sure they are warm and okay.

Happy Christmas and a Better New Year.

Hugh Boorman

MONTH	Burglary Dwelling	Burglary Other	Criminal Damage	Drugs	Fraud and Forgery	Theft from Motor Vehicle	Theft Offences	Theft of Motor Vehicle	Vehicle Interference	Violent Crime	TOTAL
July 2008	1	5	1	5	1	3			1	2	19
August 2008	2	5	6	2	3	2	4	1			30
September 2008	1	2	5	1	2	1	5				19
TOTAL	3	8	16	4	10	4	12	1	1	9	68
ROAD											
A21B										2	2
Amberleaze Drive							1				1
Bulls Place							1				1
Chalket Lane		2		2			1				5
Church Road			3			1				1	5
Cornford Park				1							1
Elmhurst Avenue		1	1				1				3
Greenleas	1										1
Hastings Road			2			1	1		1	1	6
Henwood Green Road		1	1			1					3
Henwoods Crescent			1								1
Heron's Way							1				1
Heskett Park										1	1
High Street			2		10		2				16
Lower Green Road		2	2	1				1			6
Pembury Road	1						3			1	5
Ridgeway			1								1
Romford Road		1				1	1				3
Stonecourt Lane			1								1
Sweeps Hill Close										1	1
The Forstal		1									1
Tonbridge Road			1								1
Woodhill Park	1										1
Woodside Road			1								1
TOTAL	3	8	16	4	10	4	12	1	1	9	68

FOR YOUR DIARY

Village Market – Village Hall, Tuesdays 9.30am-11.30am

Pembury Community Warden Surgery – Village Hall, Tuesdays 10am-11.30am

Town & Country (High Weald Housing) – Clinic, Tuesdays 10am-11.30am

WRVS Lunch Club – Village Hall, Wednesdays 11.45am during school term time

CAB – Pembury Library, Thursdays 9.30am-11.30am

December

- 10 Little Rascals (Mums and Toddlers) Christmas Party and Service – Baptist Church – 10am
- 11 Little Rascals (Mums and Toddlers) Christmas Party and Service – Baptist Church – 10am
- 17 Carol Singing at the Camden Arms – 7pm

January

- 1 Pembury Footpath Walkers – meet at Stonecourt Lane Bus Stop – 10.15am. No dogs, please
- 1 Pembury Afternoon WI: New Year's Party – Village Hall – 2pm
- 3 Pembury Footpath Walkers – meet at Stonecourt Lane Bus Stop – 2.15pm
- 3 St. Peter's Mothers' Union: 'Doing it Ourselves' – Upper Church Meeting Room – 8pm
- 8 Pembury Book Group – Pembury Library – 11am
- 8 Dick Whittington Panto – Pembury Players – Village Hall – 7pm
- 9 Dick Whittington Panto – Pembury Players – Village Hall – 7pm
- 9 Pembury Evening WI: 'Because Memories Matter' with Julie Pennell – Pembury Baptist Church – 7.45pm
- 10 Dick Whittington Panto – Pembury Players – Village Hall – 2pm and 7pm
- 12 Pembury U3A – Catholic Hall – 2.30pm
- 12 Parish Council Meeting – Village Hall – 8pm

February

- 4 St. Peter's Mothers' Union: 'Photographic Evening on Butterflies' with Mrs Carole Wakeford – Upper Church Meeting Room – 8pm
- 5 Pembury Afternoon WI: 'The Mice of St. Mary's' – Village Hall – 2pm
- 6 Pembury Evening WI: 'Dorothy in the Workplace' with Judith Kinneson Burke – Village Hall – 7.45pm
- 7 WI Annual Jumble Sale – Village Hall – 2pm
- 7 Pembury Footpath Walkers – meet outside Camden Arms – 2.15pm
- 9 Pembury U3A – Catholic Hall – 2.30pm
- 9 Parish Council Meeting – Village Hall – 8pm
- 12 Pembury Book Group – Pembury Library – 11am
- 26 Pembury Gardeners' Society AGM followed by a talk by Graham Mitchell of Brightwater Holidays – Catholic Hall – 7.45pm

March

- 2 Floral Art – Village Hall – 7.45pm
- 4 St. Peter's Mothers' Union: AGM & Bring and Buy – Upper Church Meeting Room – 8pm
- 5 Pembury Afternoon WI: Hand Bell Ringing – Village Hall – 2pm
- 6 Pembury Evening WI: Owls brought along by Mr James McCabe – Village Hall – 7.45pm
- 7 Pembury Footpath Walkers – meet at Stonecourt Lane Bus Stop – 2.15pm
- 9 Pembury U3A – Catholic Hall – 2.30pm
- 9 Parish Council Meeting – Village Hall – 8pm
- 12 Pembury Book Group – Pembury Library – 11am
- 12 Pembury Gardeners' Society: Ken Turner on Propagation – Catholic Hall – 7.45pm
- 28 Gardeners' Society Spring Show – Village Hall – 2.30pm
- 30 Floral Art – Village Hall – 7.45pm
- 30 Annual Parish Council Meeting – Village Hall – 8pm

ROSIE'S RECIPES

I CANNOT BELIEVE another year is passing by. It only seemed five minutes ago when I wrote the last recipe column. Well, I hope you enjoy the following ones I have selected which offer an alternative to the traditional roast turkey dinner, or to try out over the Christmas period.

Festive Lamb Cutlets

Ingredients for 4 servings

8 Lamb cutlets
2 tbsp corn oil
1 medium onion,
roughly chopped
175g (6oz) no-need-
to-soak dried
apricots, halved
2 tsp dried thyme
250ml (8 fl oz) dry
white wine
Salt and pepper, to taste
1 tsp cornflour
4 tsp snipped fresh chives



Preparation:

Brown cutlets in hot oil in a large pan. Remove cutlets and gently fry onion in oil for 5-6 mins. Return cutlets to pan with apricots and thyme. Pour over wine and season. Cover and cook gently for 20 mins until lamb is tender. Transfer cutlets to a serving dish and keep warm. Blend cornflour with a little cold water. Stir into apricots and onions, and cook until slightly thickened. Spoon apricot mixture onto serving dish and sprinkle with chives.

Note: Good served with brown rice and mange-tout.

Salmon and Cucumber Pie

Ingredients for 6 servings

450g (1lb) tail end piece fresh salmon (canned salmon could also be used)
450ml (¾ pt) milk
1 small onion, sliced
1 bay leaf
6 black peppercorns
25g (1oz) butter
25g (1oz) plain flour
1 egg, beaten
350g (12oz) shortcrust pastry



1 tbsp chopped fresh dill or 1 tsp dried dill
Salt and pepper, to taste
½ cucumber, peeled and sliced

Preparation:

Put salmon, milk, onion, bay leaf and peppercorns into pan, bring to boil, simmer for 2-3 mins, then cover pan and leave until cold. Remove fish from pan, skin, bone and flake. Melt butter in pan, add flour and cook for 1 min. Strain milk in, discarding onion, bay leaf and peppercorns. Bring to boil, cook for 2 mins. Add all but 1 tbsp egg. Cool. Heat oven to 200°C (400°F/Gas 6). Line a 20cm (8in) deep loose-based flan tin with ¾ pastry. Mix salmon with sauce, dill, salt and pepper. Pour into pastry, cover with cucumber slices. Brush edges of pastry with egg. Cover with remaining pastry. Decorate with trimmings. Brush with egg. Cook for 40 mins. Serve cold.

Note: This dish can be made in advance.

Quick Ginger Biscuit Log

Ingredients for 6 servings

24 ginger biscuits
4 tbsp ginger wine
450ml (¾ pt)
double cream
50g (2 oz) canned
peaches in natural
juice, drained
1½ tbsp caster sugar
1½ tbsp peach juice
Peach slices, to
decorate



Preparation

Place the biscuits in a shallow dish and sprinkle over the ginger wine. Leave until biscuits have absorbed wine. Whip the cream until it peaks. Chop the peaches. Fold into ⅔ cream with peach juice. Sandwich biscuits together, on a serving plate, using cream with peaches, to form a log shape. Cover with remaining cream. Decorate before serving.

Note: You can use any canned fruits you have in the cupboard that will combine with the ginger. Soak biscuits in rum if preferred.

Happy Christmas,

Rosie Bass

PEMBURY LIBRARY'S BIRTHDAY

ON SATURDAY 27 September, Pembury Library held a party to celebrate their 30th birthday. There were competitions and games, a chance to view Mary Standen's archive and a chance to learn how to draw dinosaurs with Mike Spoor, the illustrator of the Dinosaur Cove children's books. The party was very well attended. The library is not just a place you can borrow books from. They also lend DVDs, sell gift items and hold various activities throughout the week. Michael Romy, from the Courier, also attends the library every Tuesday between 10am and 12noon for you to speak to about events in the village.

Editor



Citizens Advice Bureau
FREE CONFIDENTIAL ADVICE

Pembury Library
Alternate Thursdays 9.30 to 11.30am

CHURCH TIMES

ST. PETER'S CHURCH SERVICES

Upper Church

8am Holy Communion

9.45am The Parish

Eucharist and Jun Chch

10am Holy Communion

(Wednesdays)

Old Church

11.30am Matins (except
first Sunday, Holy
Communion)

Evening services as
advertised on Church
noticeboards.

Contact tel. no. 824761.

www.pemburychurch.net

CATHOLIC CHAPEL OF ST. ANSELM – PEMBURY

Sunday Mass 10.30am

Holy Days – Vigil Mass
7.30pm

Weekday Service:

Wednesday – Mass 7pm

www.stjustusandanselm.org.uk

PEMBURY BAPTIST CHURCH

Whether you are familiar
with church or have never
been to a church before,
PBC is an enjoyable, caring
and diverse community with
activities all through the week
for all ages.

Our services explore relevant
life issues and are on
Sundays at 10am for a family
service (with children's
activities) and 6.30pm for a
café service. We'd love to see
you there!

Please call 825590 or visit
www.pemburybaptistchurch.org.uk
for details.

YOUR REPRESENTATIVES

PARISH COUNCIL



Cllr June Crowhurst,
44 Elmhurst Avenue TN2 4DA
Tel: 824873
Chairman of Parish Council
*Chairman, Amenities, Christmas
Lights and Pembury in Bloom*



Cllr Kevin Edser,
49 The Gill TN2 4DJ
Tel: 823643
Vice Chairman of Parish Council
*Chairman of Planning & Highways
Working Group*



Cllr David Coleman
22 Ridgeway TN2 4ER
Tel: 823402



Cllr Janet Ditchett,
7 Cornford Park TN2 4PW
Tel: 822586



Cllr Patrick Gillan
1 Knights Close TN2 4EL
Tel: 825324



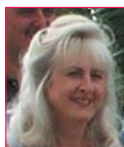
Cllr Matthew Jackson
4 Hastings Road TN2 4PD
Tel: 824761
*Chair Public Relations
Working Group*



Cllr Sally Osborn
34 Canterbury Road
TN2 4JT. Tel: 822726
*Chairman, Allotments, Burials,
Environment & Environmental
Improvement Working Group*



Cllr Andrew Proctor
82 Woodhill Park TN2 4NP
Tel: 823064



Cllr Chris Snow
1 Cornford Park TN2 4PW
Tel: 825428



**Clerk to the Pembury Parish
Council**
Barbara Russell, 6 The Grove
TN2 4BU. Tel: 823193. Email:
clerk@pemburypc.kentparishes.gov.uk

Deputy Clerk to the Pembury Parish Council
Yvette Allen, 6 The Grove TN2 4BU.
Tel: 823193.
Email: deputy@pemburypc.kentparishes.gov.uk

BOROUGH COUNCIL

Paul Barrington-King, 22 The Coppice, TN2 4EY. Tel: 825144
June Crowhurst, 44 Elmhurst Avenue TN2 4DA. Tel: 824873
Mike Tompsett, 14 Gimble Way, TN2 4BX. Tel: 822711

COUNTY COUNCIL

Kevin Lynes, 5 Downs Cottages, The Down, Lamberhurst, Kent TN3 8EX. Tel: 890922

VILLAGE ORGANISATIONS

AGE CONCERN

Mrs Sandra Springett. Tel: 522591

BLACK & WHITE MARCHING MILITAIRE

Louise. Tel: 823097

CATHOLIC CHURCH

Deacon Bill Eason. Tel: 824133

CONSERVATIVE PARTY

Terry Cload, 56 Herons Way. Tel: 823966

CRICKET CLUB

Hon. Secretary: Andy Dawes, 17 Cornford Park, Pembury.
Tel: 822862

FRIENDS OF PEMBURY HOSPITAL

c/o Pembury Hospital. Tel: 823535

FRIENDS OF PEMBURY PARISH CHURCH

Chairman: Mrs S. Clarke, Little Stanton,
Romford Road. Tel: 823932

GUIDES, BROWNIES AND RAINBOWS

Mrs M. Allan, 9 Henwood Green Road. Tel: 822373

HOSPICE IN THE WEALD

Maidstone Road. Tel: 820500

KENT COLLEGE

Headmistress: Mrs Sally-Anne Huang. Tel: 822006

KENT COLLEGE PREP SCHOOL & NURSERY

Headmistress: Mrs Ann Lawson. Tel: 820204

LABOUR PARTY

Dave & Sally Osborn, 34 Canterbury Rd. Tel: 822726

LIBERAL DEMOCRATIC PARTY

David Mills. Tel: 825577

LITTLE RASCALS

c/o PBC Office. Tel: 825590

MULTIPLE SCLEROSIS SOCIETY

TW District. Tel: 0845 6037882

NATIONAL FEDERATION OF THE BLIND, UK

Michael Coggles. Tel: 822705

NEIGHBOURHOOD WATCH

Gill Pavely. Tel: 822605

PEMBURY ALLOTMENT ASSOCIATION

Brenda Brown. Tel: 824163

PEMBURY ATHLETIC (YOUTH) FOOTBALL CLUB

David Gow. Tel: 824119

PEMBURY BAPTIST CHURCH

Revd. Wayne Alexander, Church Office. Tel: 825590

PEMBURY BOWLS CLUB

Len Birnie. Tel: 01892 681222

PEMBURY BRIDGE CLUB

Geoff Plummer. Tel: 824652

PEMBURY COMMUNITY WARDEN

Tom Younger. Tel: 07813 694138

PEMBURY COMMUNITY WORKING PARTNERSHIP

Parish Office. Tel: 823193

PEMBURY F.C. SATURDAY

Mick Waterman, 26 The Coppice. Tel: 824137

PEMBURY F.C. SUNDAY

Phil Craxton, 34 Woodhill Park. Tel: 823928

PEMBURY FOOTPATH WALKERS

N. & K. Franklin, 11 The Meadow. Tel: 823212

PEMBURY GARDENERS

Ann Purton. Tel: 824223

PEMBURY PAVILION BOOKINGS

Carole Edser. Tel: 823643

PEMBURY PHOENIX TWIRLERS

Dave Brett. Tel: 824233

PEMBURY PLAYERS

James Whitehorn. Tel: 824854

PEMBURY SCHOOL

Headteacher – Mrs C. Thewlis. Tel: 822259

PEMBURY SCHOOL ASSOCIATION

Frances Armstrong. Tel: 822259

PEMBURY SCHOOL HOUSE NURSERY

Teacher in charge: Rachel Teigen. Tel: 825580

PEMBURY SEQUENCE DANCE CLUB

Secretary: Mrs Marion Warren. Tel: 547617

PEMBURY SHORT MAT BOWLING CLUB

Arthur Storey. Tel: 822509

PEMBURY SOCIETY

Chairman: Ken Watts. Tel: 822770

PEMBURY TENNIS CLUB

Mrs S. Smith, 2 Ridgeway. Tel: 822405

PEMBURY U3A

Membership Secretary: Andrew Richardson.
Tel: 824012

PEMBURY UPPER AND OLD CHURCH

Revd. Matthew Jackson Tel: 824761

PEMBURY VILLAGE MARKET

Karol Young. Tel: 823413

Julie Patten. Tel: 824479

PEMBURY YOUTH THEATRE ACADEMY

Dee Barrington-King. Tel: 825144

PEPENBURY

Principal: Mr Roger Gibson, Cornford Lane. Tel: 822168

POLICE COMMUNITY SUPPORT OFFICER

PCSO Nick Brown. Tel: 07772 226001

ROTARY CLUB OF SOUTHBOROUGH & PEMBURY

Secretary: Mike Raper. Tel: 01892 520171

ROYAL NATIONAL LIFEBOAT INSTITUTION

Peter Chartres, 54 Woodhill Park. Tel: 823759

SCOUTS, CUBS AND BEAVERS

Mike Cartwright, 16 Cornford Park, Pembury.
Tel: 823235

SCOUT & GUIDE HQ MANAGEMENT TEAM

Mike Cartwright, 16 Cornford Park, Pembury.

Tel: 823235 and Moira Allan, 9 Henwood Green Road.
Tel 822373

ST. PETER'S MOTHERS' UNION

Secretary: Mrs M. Adams. Tel: 822769

ST. PETER'S PHOTOGRAPHIC CLUB

Events Secretary, Carol Wakeford. Tel: 822030

TOWN & COUNTRY (HIGH WEALD HOUSING)

Sally Hunter. Tel: 501605

TREE WARDEN. Caroline Mazzey. Tel: 822493

TUNBRIDGE WELLS ACCESS GROUP

Gill Pavely. Tel: 822605

TUNBRIDGE WELLS & DISTRICT VICTIM SUPPORT

SCHEME. Tel: 513969

VILLAGE HALL

Manager (bookings): Rachel Windus. Tel: 822837

WHEELCHAIR LOAN

(24 hour maximum, for Pembury Residents)

Pauline Hawker. Tel: 824327

WOMEN'S INSTITUTES

Afternoon: Mrs Margaret Buss. Tel: 822530

Evening: Mrs Angela Saunders. Tel: 822307

WRVS LUNCH CLUB

Contact: Mrs Amanda Everett. Tel: 823280



Kent
College
Preparatory School



Kent College Preparatory school for girls aged 3-11

Old Church Road, Pembury,
Tunbridge Wells, Kent TN2 4AX

Tel: 01892 820204 Fax: 01892 820214
prepschool@kentcollege.kent.sch.uk
www.kent-college.co.uk

Kent College is a registered charity no 307920 and is a member of the Methodist Independent Schools Group.