

# PEMBURY VILLAGE NEWS

ISSUE 127  
AUTUMN 2006



# CONTENTS

Bo Beep Corner – New Sign Dedication	3 & 5	What Are Your Views? Regenerating Lower Green Road Recreation Ground	20 & 21
Pembury Musical Picnic	5	The Silver Jubilee for the Catholic Parish of St Justus and St Anselm	23
Self-Congratulatory or Just Plain Sensible?	7	Going National!	23
Pembury Village Quiz Night 2006	9	Pembury In The Past	24 & 25
P.Y.T.A. – Pembury Youth Theatre Academy	9	Pembury Village Market	25
PBK Big Bike Ride – The End of the Road	11	A Water Meter Story	27
Pembury Bowls Club	13	My Plot	29
Pembury's Young Footballers Need Your Help	13	King William Public House	29
Creative Art Café Opens For Teenagers	15	Jan's Garden Views	31
Youth Minister for Pembury Baptist Church	15	A Pembury Quiz . . .	33
Pembury U3A	16	Rosie's Recipes	34
Pembury Do The Kwik Cricket Double	16	For Your Diary	35
Jamie Boxall – A Blue Sky Story	17	Crime in Pembury	36
German Visit To Pembury	17	Report A Problem	37
Snippets	19	Church Times	37
		Your Representatives	38
		Village Organisations	39

Cover photograph by Peter Greenwood FRPS

## *Editorial Working Group:*

Alison Morton (Editor), Jennifer Ayres, Paul Barrington-King,  
Rosie Bass, Janet Ditchett, Leslie Gregory and Ann Owen

*Please note: The Editor's decision is final on whether or not to publish any item submitted. The Editor reserves the right to edit (that is to cut, précis, alter, correct grammar and spelling) any item published.*

## PEMBURY VILLAGE NEWS

Editor: Mrs Alison Morton  
2 The Coppice, Pembury TN2 4EY  
Tel: 824938 Fax: 825134  
Distribution enquiries: Parish Clerk 823193  
**Email: [pvn@pembury.org](mailto:pvn@pembury.org)**  
**Website: [www.pembury.org](http://www.pembury.org)**

Pembury Village News is published four times a year by the Parish Council, but the views expressed in the magazine do not necessarily represent official council opinion or policy.

Typeset and printed by  
TMH, Tunbridge Wells.



## BO PEEP CORNER – NEW SIGN DEDICATION

ON A WARM, bright Saturday, 29 July, Pembury's splendid new sign at Bo-Peep corner was officially dedicated at 12 noon. A silhouette type, black metal sign with a cut out image and gold lettering, it was designed by artist Richard Cook and made and erected by Steve Blackman of Blackman Smithy in Robertsbridge. The Pembury Society committee took the initiative for arranging the sign and Richard is the son of two members of the committee, Jan and Les Cook. The project was jointly funded by the Pembury Parish Council and the Pembury Community Chest, a small fund administered by The Pembury Society.



Ken Watts, Vice-Chairman of the Pembury Society, welcomed Committee members, Pembury Parish Councillors, the designer and the manufacturer, John Beadle who advised on behalf of the Village Signs Society, along with a good turn-out of members. *"We should all thank those members of The Pembury Society and the Parish Council who have worked together to produce the sign as you see it today, and those members of our community who submitted design suggestions,"* said Ken. He added: *"Therefore, it gives me great pleasure to officially present to the residents of Pembury this new Bo-Peep sign – not only to maintain our links with the past but to be a symbol for the future. I hand this sign over to the Parish Council for safe keeping and maintenance."*

The new sign has been long awaited by Pembury residents because there was formerly a sign at the same spot that fell down in a storm during the winter of 2001/2002. The old sign had been arranged by an earlier committee of The Pembury Society and was dedicated on 10 May 1990. It was a painted wooden sign designed by the late Jim Holland and mounted in ironwork supplied by Peter Watson. It was split in half by the storm leaving the empty rusting frame as a bit of an eyesore until a few weeks ago when Steve Blackman put the new sign up on the old post, having first given it a good coat of creosote.

The sign project got started in early 2003 when The Pembury Society and the Parish Council agreed to form a small joint sub-committee. This foundered because both bodies experienced personnel changes but not before they had arranged a competition to create a winning design for a new sign. Seven designs competed, some to a high standard. Later on, new Society committee members took the initiative but they decided on a silhouette type of metal sign, so it was felt that unfortunately the competition designs weren't suitable, being

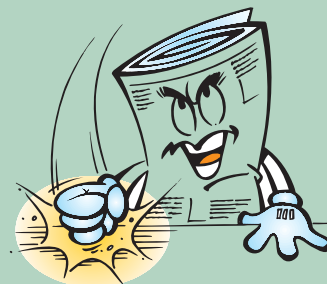
*continued on page 5*

### **COPY FOR NEXT ISSUE**

*Any news items or articles for possible inclusion in the next issue of this magazine must be forwarded to the Editor before*

***1 November 2006.***

*If you use a computer to type your article, it would be extremely helpful if you could send it (and photos) in by e-mail to [pvn@pembury.org](mailto:pvn@pembury.org)*



*Member of the National Association of Estate Agents*



Discuss your property requirements with our qualified friendly staff in  
comfortable relaxed surroundings

★ ★ OPEN 6 DAYS A WEEK – MONDAY TO SATURDAY ★ ★

**16 High Street, Pembury TN2 4NY**

**Tel: 01892 822880 Fax: 01892 825250 email: [pembury@denisebarnes.co.uk](mailto:pembury@denisebarnes.co.uk)**

Also at:	Tunbridge Wells: 01892 527733	Sevenoaks: 01732 450866
	Prestige & Country Homes: 01892 618181	Brenchley: 01892 724000
	Residential Lettings: 01732 500400	Tonbridge: 01732 771616

**Accurate?  
Reliable?  
To deadline?**



**We are!**

- ★ Audio typing & general wordprocessing
- ★ Reports, book drafts, mailshots
- ★ PowerPoint presentations
- ★ Spreadsheet and database management
- ★ Quality assured European translations
- ★ Friendly, reliable and professional service



Official hosts of the  
Pembury Village  
News website  
[www.pembury.org](http://www.pembury.org)

**PBSS Translations**  
**Pembury Business & Secretarial Services**  
**Tel: 01892 824833**  
**[www.pbss-uk.com](http://www.pbss-uk.com)      [partners@pbss-uk.com](mailto:partners@pbss-uk.com)**

---

## BO PEEP CORNER – NEW SIGN DEDICATION *continued*

suited more to a painted image. Once Richard's design became available the project could move on, going out to several manufacturers for tender before The Society presented to the Parish their proposal to order the sign from Blackman Smithy.

The area known as Bo Peep is situated at the south east of the village of Pembury and Bo Peep Corner is where Hastings Road meets Henwood Green Road just before joining the A21 Pembury bypass. The history of how Bo Peep got its name is shrouded in mystery. Bo Peep is a very old term possibly connected with a pillory or a lock-up. The first known record of Pembury tells of the manors of Pepenbury Magna and Pepenbury Parva. The latter was also at some time known as Bowridge (or south ridge) and later Bo Peep. Historian Mary E. Standen believed that the name Bo Peep could have derived from Bon Pepin (presumably from the French word bon, meaning good, and a shortening of Pepingeberia, one of the early names for Pembury). Others have speculated that the name conjures up the history of smuggling in the area with the high point acting as a lookout post for either customs men or smugglers trying to avoid them.

---

## PEMBURY MUSICAL PICNIC

**S**ATURDAY 10 JUNE 2006 saw the annual Pembury Musical Picnic on the Green, organised by Pembury Parish Council. Live music was provided by 'The Rhythm Kings', mostly light jazz/easy listening, plus talented local singer Pamela Tribe.

For once, the evening was warm, and crowds of Pembury residents from every part of the village turned out with their picnics, wine, tables and chairs, rugs, etc. Glasses clinked, greetings were exchanged, children ran around in high spirits and memories stirred as the music played. Only the failing light, a slight chilling in the air and the yawns of exhausted children persuaded people that it was time to go home.

Pembury residents gave generously toward the Parish Council's sponsored charities: St John Ambulance, Headway and Compaid and a total of £210 was raised just from change in people's pockets.

See you next year!





# David Salter

## Gas & Plumbing Services

Central Heating Installations & Upgrades

Boiler & Cylinder Changes

Breakdowns, Connections & Servicing of all gas appliances

15 Years experience with British Gas

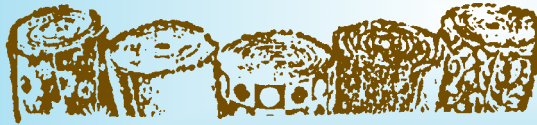
Corgi Registered



**EMERGENCY CALL OUTS – MOBILE 07733 107333 – HOME 01892 824481**

# Brian V Toogood

**CARPETS & VINYLs SUPPLIED & FITTED  
CARPETS & UPHOLSTERY CLEANED**



*Stain protection treatment for carpets and upholstery*

**FOR PERSONAL & PROFESSIONAL SERVICE TEL: PEMBURY 824252**



OVER 28 YEARS' EXPERIENCE.  
EST 1977

Any make of carpet available.  
Pattern books brought to your home.  
Carpet and upholstery cleaning, also rugs  
and orientals.  
Carpets adapted and repaired.

# JULIE ROBINSON

IHBC, BABTAC

**Professional Beauty Therapist**



FULL RANGE OF PROFESSIONAL BEAUTY TREATMENTS AVAILABLE  
WITHIN COMFORTABLE AND PRIVATE SURROUNDINGS



**SPECIALISED DERMALOGICA FACIALS \* MAVALA MANICURES/PEDICURES  
WAXING \* TOP-TO-TOE TREATMENTS**

*Please telephone for a list of treatment details. PEMBURY (01892) 824059*

# KEITH RABBITT

AMIMI

**VAUXHALL SPECIALIST**

**31 years' experience at Renny's of Tonbridge**

**Most makes serviced and repaired**

Why go to a franchised dealership when you can have  
a personalised service on a one-to-one.

**For quality, reliability and a friendly service call Keith on  
01892 723362 or 07790 436109**



M.O.T. TESTS

## SELF-CONGRATULATORY OR JUST PLAIN SENSIBLE?

*The only thing needed for evil to prosper is for good men to do nothing.*

Edmund Burke

**P**EMBURY IN 2006 seems to be a mixed bag, even going to the dogs. Rumours seem to run round, gathering momentum via mobile phones and email. If you believed them all, you'd never go out your front door!

Pembury, like every single village in the UK, has its bubbling surface skim of petty criminality. We are all immensely irritated, even incandescent, in light of scratched cars, broken fences, noise, litter, bad language, minor criminal damage, assaults and outright theft. The attacks on the Bowls Clubhouse and the old sports pavilion just seem to compound the situation.

However, before we all convince ourselves we live in Baghdad, let's take a step back.

Minor rowdiness, drinking, swearing and bad attitude have been recorded in English village life since medieval times. Bad behaviour by a few can make a big impact when everybody else is well-behaved and reasonable. Any teacher or youth worker will tell you that it's the one or two in the class of 30 that make most trouble. What about the other 28-29? We seem to go on and on about the 'bad hats' and discount the good behaviour, willingness to participate and the positive attitude of the over 93%.

There are around 6,500 residents of Pembury. There were 60 recorded incidents in the last quarter's crime figures. So, roughly speaking, there is one incident for every 108 inhabitants. Bear in mind that a sizeable proportion (ranging between a third and two-thirds in any quarter) of reported incidents take place at the hospital, the local garage and shops (Tonbridge Road, High Street and Hastings Road). Averaged out, this leaves around 30 incidents per quarter spread across the rest of the village. Not Baghdad, I think.

"That's not a true picture," I hear people say. "It doesn't include the vandalism that we don't bother to report." Enter rumour control and a vicious circle.

If anti-social behaviour in the street, or an act of vandalism, petty theft, drunkenness, whatever, occurs, it must be reported to the police to get into the crime figures. If it's not in the crime figures, then it's not visible on police statistics. If it doesn't show up statistically as a trouble spot, then the police cannot justify devoting scarce resources to it, so they don't police the area in question. So then

there are moans about lack of police presence. Circle closed.

If there is an emergency (life threatened, crime in progress, car accident), call 999. If police are required (other incident occurring that the police should deal with) call 01732 771055. Reporting other non-emergency incidents to the police (tel. 01622 650065) is not always easy. Sometimes it seems their call centre staff seem deliberately obtuse, unhelpful and using antiquated telephone systems. Other times they are wonderful! If you have Internet access then it's really easy. Just go to [www.online.police.uk](http://www.online.police.uk) and follow the instructions. Get your facts together and enlist a bit of patience – it really is worthwhile. The police will not come out to every minor incident. This is a false expectation. Dixon of Dock Green will not call. However, each incident is logged, each piece of information fits into the jigsaw and helps to build up the whole picture.

For anti-social behaviour, Terry Hughes, of the Anti-Social Behaviour Unit in Tunbridge Wells Borough Council, would love to hear from you. A down to earth realist, he has a few tricks up his sleeve as well as common-sense advice (tel. 01892 554233).

Tom Younger, the Pembury Community Warden is not a Police Officer, he acts as eyes and ears around Pembury during the day, gets involved in community youth work and gives advice to all ages in his regular surgery. Often, he can act as a first point of contact for other services (tel 07813 694138)

We sometimes feel that one person reporting one incident is a 'lone voice in the wilderness' and won't make any difference, so we don't bother. Sorry, this is an easy way out; it salves our consciences and doesn't help anybody. We also don't want to 'get involved' or we worry our house or street will be blacklisted. Yet when it's our car/house/family member, we ask why nobody saw anything/helped/ was bothered. Protesting or facing up to people is very difficult, we naturally worry about retaliation. Yes, it's possible, even likely, but what is the cost of not saying anything, ever? Tell the police, the Anti Social Behaviour Unit or the Community Warden. It's your village – you do something for it.

Aiming for 100% is always good, but 93% good is quite a high score. At the expense of being self-congratulatory, we can say that it's generally quite good here in Pembury.



## P.L.H. DECORATING

Interior - Exterior  
Painting & Decorating

**01732 773414**

Mobile 07941 068717

E-mail: [plh.decor@virgin.net](mailto:plh.decor@virgin.net)

## PEMBURY DENTAL SURGERY



**Nelis du Plessis** B.Ch.D. (Pret)

67 Hastings Road, Pembury, Tunbridge Wells, Kent TN2 4JS

Tel: (01892) 823044

**Committed to Quality Dentistry**

## Steffan Keily

**FOR ALL YOUR FENCING REQUIREMENTS**



All types of fencing supplied and fitted  
Close board, panels, palisade, post & rail, gates

**FREE ESTIMATES    FULLY INSURED**

**HOME: (PEMBURY) 01892-824048    MOBILE: 07941138060**

# STURGEON'S

**ROAD, DRIVE & CIVIL ENGINEERS**

**COAL MERCHANTS**

**PEMBURY 822221/2/3**



---

## PEMBURY VILLAGE QUIZ NIGHT 2006

THERE WERE 23 teams of six people who filled the village hall for this year's Parish Council Quiz night on 12 May. The teams were representing many of the organisations in the village and all were hoping to win the Cup and the cheque for £200. Keith Merrin was a very able Quiz Master and his great strength kept us all going to the end with the help of Adam on the computer and the Trefoil Guild who were the markers.

There were groans when the long round was introduced as a 'Sudoku' puzzle but this did help to sort out the teams and produce the eventual winners. The Footpath Walkers were keen to maintain their winning streak but the Big 'A' team (also previous winners) were also keen to do their best. Finally, the 'Watchdogs', the Neighbourhood Watch team had a good long round followed by playing their joker on the 'Dingbat' round and came

out top. As winning team they received the cup from Parish Council Chairman

David Coleman and the cheque which they promised would be donated to the MS Society. It was a noisy evening, the wine flowed and the raffle tickets all sold.

The Guides and Scouts, who organised the evening, wish to thank everyone who came, and the profit helped to boost the re-fencing fund for the headquarters building. If you didn't win this year, then better luck next year. I will try not to make the questions too hard. Thank you to every one who came.

**Janet Ditchett**, Guides & Scouts Secretary.



---

## P.Y.T.A. – PEMBURY YOUTH THEATRE ACADEMY

BACK IN MARCH a group of young people put on a show at the Pembury Baptist Church, and raised over £700 for the childrens' play area in Pembury recreation ground. From this show an idea was born, to run a theatre group for young people. Both Maddy Earley and I come from a theatrical background, having been in theatre groups most of our lives. I have choreographed pantomimes and shows in Tonbridge and Southborough and Maddy has been involved with some of the best amateur dramatic societies in our area.

P.Y.T.A is not a stuffy theatre school where you have to be good otherwise you don't get to do anything. We want the young people who come to us to experiment with ideas, use their imaginations, try out new things, perhaps learn a new skill, have fun, and make new friends. It's a great way of building confidence. We aim to produce two shows a year, a percentage of the income going to a charity of the young people's choice.

On Monday 18 July we had a taster evening and although it was a hot and sunny evening we had a fantastic response. The first group danced to a number from 'Shrek' then sung some very silly songs. The next group made their own music using their bodies and objects such as wooden spoons, empty plastic bottles and saucepans. They finished off with a musical number from 'Austin Powers'. Everyone went home happy if not a bit sweaty!! The Academy itself starts on Monday September 11 and is split into two age groups, 5-9yrs 6.30-7.30pm and 10-15yrs 7.30-8.30pm. Anyone who would like more information can phone **Dee Barrington-King** on 825144 or **Maddy** on 824489 or you can email [p.y.t.a@hotmail.co.uk](mailto:p.y.t.a@hotmail.co.uk)





## Peter Willard Conservatory Specialist

Your Local Supplier of Top Quality

UPVC Conservatories. Any size and

many different styles.

Just call *NOW* for a Free Estimate

*...A Complement to Your Home*

Telephone no. 01892 824736      Mobile no. 07950 120341

## COMTECS LTD

Providing IT Support services to Local Business

Comtecs Ltd can provide you with: -

- IT & Network Support from £10 per month
- Hardware and Software procurement
- Anti Virus Cleaning and Prevention from £5 per month
- Web Development and Design

Call for a free consultation

[www.comtecs.co.uk](http://www.comtecs.co.uk) - 01892 514 636

## PBK BIG BIKE RIDE – THE END OF THE ROAD

**T**IMELINE 18 JUNE 2006 – Arrival in Pembury. Paul Barrington-King and the group from Wiesbaden, plus a number of supporters from the UK, cycled into Pembury at about 3.30pm on Sunday 18 June, stopping for some well earned ‘light refreshments’ at the Camden Arms Hotel before proceeding to Tunbridge Wells Town Hall to a mass welcome at the finish line. It was the end of a challenging, but highly enjoyable, 400 mile cycle ride from Wiesbaden in the heart of Germany, combining the 400 year anniversary of Tunbridge Wells with a fun way of raising money for new equipment for Pembury’s Recreation Ground.

### Paul’s motivation

“As an elected member of Tunbridge Wells Borough Council representing the ward of Pembury, I am keen to support the quality of life for all residents. We have a population approaching 6,500 that keeps me busy 24/7 all the year round.

Although Pembury is a very special place to live we have a very poor provision of recreational facilities. With sporadic outbreaks of anti-social behaviour becoming a

worrying problem for our residents, research indicates that improving these facilities might offer the engagement of disaffected factions towards the positive benefits of recreation. I am hoping that my ride will encourage the raising of monies through sponsorship contributing towards the provision of badly-needed facilities. I have been crusading for this need since I was elected several years ago and I owe it to the youngsters and others to make this happen.”

Paul and fellow-cyclists raised over £2,100 overall (so far!). Paul said: “I would wish to offer my heartfelt thanks to all who supported my efforts in raising thousands of pounds for our



youngsters in the village.

It was an incredible adventure that, after many months of planning, fulfilled all of my expectations.

I should add that having completed four hundred miles in four days for the 400 year Royal Tunbridge Wells celebrations I am not at this moment considering riding five hundred miles in five days for the 500 year anniversary!”



# PEMBURY VILLAGE HALL

## AVAILABLE FOR HIRE

**Facilities include Main Hall,  
Meeting Room, Stage,  
Kitchen, Changing Rooms  
and Services.**

**Ideal for Club Meetings,  
Weddings, Anniversaries,  
Corporate Functions, Shows,  
Dances, Musical Events, etc.**

**Contact Bookings Manager –  
Rachel Windus on 822837**



### **G-Tech Computers**

Home and Home Office PC  
Support

Home Visits or Free Collection & Delivery  
No Fix - No Fee & No Call out Charge  
Upgrades To Your Existing PC  
New PC System Sales  
Servicing & Preventative Maintenance  
Broadband & Wireless Network Installation  
Virus Detection, Removal & Prevention  
Full Support Services For The Home & Home  
Office User

*Pembury - 01892 823994  
Mobile - 07929 903126*

*E Mail Address*

*Gtechcomputers@tiscali.co.uk*



## **Memorials, Restoration and Domestic Stonework**

232 The Ridge  
Hastings  
East Sussex TN34 2AE  
**Tel: 01424 421 099**  
**Fax: 01424 722 237**  
[www.burslem.co.uk](http://www.burslem.co.uk)

New Memorials, Cleaning,  
Memorial Renovation and  
Additional Inscriptions.  
Brochures available

# WALROND FULLER

**CHARTERED BUILDING  
SURVEYORS AND  
PROJECT MANAGERS**

**01892 709600**

**STRUCTURAL SURVEYS  
ADVICE ON LISTED AND  
PERIOD PROPERTIES**

---

## PEMBURY BOWLS CLUB

**I**N JULY, Pembury Bowls Club suffered a suspected arson attack and this was the distressing view the members of Pembury Bowls Club saw when they arrived at the scene on Saturday 14 July 2006.

The members were accustomed to fences being broken down, bottles on the green, graffiti on the clubhouse walls and several attempted break-ins but this . . . !

The Club was established in 1929 and has been a part of Pembury village life for almost eighty years and it will continue to do so. Although not able to welcome other bowling clubs to afternoon friendly matches, league matches continue to be held along with roll-ups by members. This in spite of the fact that a heavy digging machine and grass roller were dragged on to the green by the perpetrators.

The members are anxious to obtain any photos or memorabilia anyone may have of Pembury Bowls Club, activities, past members etc., as a number of old photos were lost in the blaze. If you can help please contact Barbara Scholten on 823445.

Pembury Parish Council is helping out with temporary storage of their undamaged equipment and County Councillor Kevin Lynes and Borough Councillor Paul Barrington-King are endeavouring to find a temporary portable building to fit on the site of the fire damaged huts.

Insofar as the fire itself is concerned, the building was quite old and wooden, with what appears to be plywood facings covered in green paint. With the dry weather it would appear not to have required much external source to set off the blaze. There were apparently no signs of anything (like petrol) being used to accelerate the fire, but presumably, once the wooden buildings started to blaze, the mowers, etc. stored inside would only have added to the problem.

At this very preliminary stage, the police do not believe it was the work of 'rampaging youths' but one or two individuals. They are apparently following some leads given by local residents, but will, no doubt, need to get evidence. The Club is currently waiting to hear from their insurers and will then consider the way forward.

**Stop Press** – The indoor short mat bowling season will be underway in the Village Hall soon. Sessions will take place on alternate Tuesdays, every Thursday and Friday. It is all very light hearted and a great way of spending a couple of hours during those dreary winter days. Enrolment sessions are Tuesday 19 September at 2.15pm, Thursday 21 September at 2.15pm and Friday 22 September at 7.15pm. However, if you are unable to attend any of these sessions you can come and give it a go and enrol at any subsequent sessions.



---

## PEMBURY'S YOUNG FOOTBALLERS NEED YOUR HELP

**A**DMINISTRATION, FOOTBALL, whatever your talent – come and help. You might never have played football in your life and you may not have thought about the different talents that are needed to run a football club. With over 200 children the club needs both administration and footballing support. The club has a strong core of helpers. We are looking for you to give us two hours a

week to help with paperwork/organisation or on the footballing side.

We would like to stress that you will not be on your own and that you can help not only at the weekends but at any time during the week. We also need fundraisers – fancy running a bingo night in the village? Contact Charlie Hambleton on tel. 824022



# AMBERSIDE DANCE STUDIO

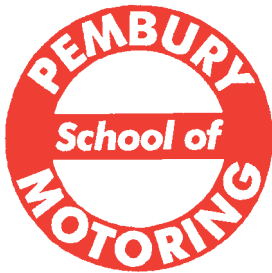
## PEMBURY VILLAGE HALL

PRE-SCHOOL CREATIVE MOVEMENT CLASSES FOR BOYS AND GIRLS  
BALLET, MODERN AND TAP DANCING CLASSES. ISTD SYLLABI  
AND EXAMINATIONS

ADULT BALLET STRETCH CLASS

SATURDAY MORNING CLASSES FOR YEAR ONE CHILDREN

**Please Contact: Victoria Mustill-King – 01892 724777**



**Steven Toogood**

*former BSM Instructor. High Pass Rate*

**Learn to drive with the BEST**

- Theory and Hazard Perception
  - Beginners Refreshers
- Motorway, Night Driving
- Patient, Friendly and Reliable
- New Ford Focus Zetec, Climate
- Nervous Drivers Welcome

Gift Vouchers Available



**01892 824 252 0771 501 877**  
Queen's Folly, 64 Lower Green Road, Pembury

# Burtons

## Pembury's Solicitors

- ★ Full Range of Legal Services
- ★ Prompt Efficient Friendly Service

The Tyled House  
23a High Street  
Pembury, Kent TN2 4PH

**Tel (01892) 824577**



---

## CREATIVE ART CAFE OPENS FOR TEENAGERS

**B**OOMING HIP HOP beats poured from Pembury Baptist Church at the launch of the youth club's creative arts café.

The event was organised by the Romford Road Church and funded by Kent County Council (KCC) to increase the activities on offer for teenagers in the village. Community projects leader Jemma Alexander said: *"The aim is to run monthly workshops so the young people can explore different arts. It gives them an opportunity to gain new skills, build their self-esteem and develop their creativity."*

The café on this occasion was a dance workshop and forthcoming events include drama, graffiti and MC-ing lessons. Mrs Alexander said the activities had been chosen to 'spark' the youngsters' interests.

The workshop was run by Collective Kent, a group which tours schools and churches using dance and performance to spread a Christian message. Teenagers at Pembury's weekly youth club 'The Mix' had already worked with the group and were excited to see their new routines.

Sam Weller of Canterbury Road, told how they played 'good dance music' and taught choreographed dances. The 17-year-old was looking forward to the other workshops, saying: *"There are going to be all different ones like drama, which is good because I am great at acting."* A hush fell over the hall as the band began their performance and everyone sat enthralled with the impressive dancing and live singing.

Charlotte Clift of Sandhurst Avenue, is studying for a sports diploma at West Kent College. She said: *"I think it is good for us and keeps us out of trouble; planning new stuff is really good for us so we do not get bored."*

KCC councillor for Pembury, Kevin Lynes used his local member grant donating around £1,000 to fund the café. He said: *"In providing a youth club, in partnership with Pembury Parish Council and Pembury Baptist Church, every Tuesday evening we are now looking to provide more and more. It is about bit by bit extending out and providing young people in Pembury with a whole lot more interesting things to do."*

---

## YOUTH MINISTER FOR PEMBURY BAPTIST CHURCH

**E**ARLIER IN THE year PBC (Pembury Baptist Church) invited Simon Cragg to be the Church's Youth Ministry co-ordinator and Associate Pastor to Wayne Alexander. Simon believed it right to accept and has already been in Pembury since mid July. Leslie Gregory caught up with Simon to find out a few things about him.

*Hi, Simon. It's good to have you around. Please introduce yourself.*

Yes, I'm Simon, aged 22. I spent most of my life in a village similar to Pembury called Great Abington near Cambridge. I was educated in the local Sawston School and a Sixth Form College in Cambridge. I had a gap year after that with the Soul Survivor Church in Watford who offered a young peoples' leadership course. I also worked in the local Post Office during school holidays so I know about meeting and dealing with people. As a youngster I wanted to be a doctor and pursued that through A levels. But God had other ideas. At 19 I went to the London School of Theology for a 3-year degree course and

gained a BA (Theology).

*What interests do you have, e.g. music?*

I am a keen player and composer of music.

I enjoy playing guitar in the PBC Worship Band.

I read quite a lot and like most fellows, I follow football especially Chelsea.

*How do you find Pembury?*

I love it. It's very similar to my home village as I've said. People are very welcoming and I feel at home. The youth are great and I hope to be able to invest in their lives.

*There are a couple of important events for you coming up, aren't there?*

Yes, my Ordination and Induction is at PBC on Sunday 17 September at 3 pm. The other is marrying Sam in July 2007. Sam is doing a degree in Applied Decorative Arts at Rochester. She, like me, is passionate about young people and wants to have an effect for good on their lives.

*Thanks for all that Simon. We will follow what the future unfolds with interest.*





You are invited to the inaugural meeting of the new  
**PEMBURY U3A**

(University of the Third Age)

to be held on

**Monday 16th October 2006 at 2pm**

**at The Catholic Church Hall, Lower Green Road, Pembury**

Our speakers will be

**DEREK PAYNE**

(Kent Contact and former Tonbridge U3A Chairman)

and

**CHRISTABEL SWORDER**

(current Tunbridge Wells U3A Chairman)

**Please do come along and learn about this exciting new venture.**

*Contact for further information: Pauline Hawker – 824327*

## PEMBURY DO THE KWIK CRICKET DOUBLE

**P**EMBURY PRIMARY School were this year's Tunbridge Wells and District Kwik Cricket champions securing both the 'A' and 'B' team competitions at the Nevill Ground Festival last Wednesday.

In an exciting 'A' final against reigning champions Brenchley & Matfield, Pembury batted first and scored an impressive 244 from their eight overs. This strong batting performance was then supported by the bowlers who restricted the run rate and managed to take nine wickets leaving the Brenchley & Matfield score on 181.

The 'B' final was a closer affair as Pembury took on local rivals Bidborough who batted first and scored 228, a score which would have been much higher had they not lost two wickets in the final over. Pembury set about the run-chase but struggled to score against some tight bowling, losing several wickets early on. However, their last two pairs of batsmen gradually built the score and they eventually reached 230, winning by just two runs.

The losing semi-finalists in the 'A' competition were Bidborough and St Paul's who finished

third and fourth respectively and in the 'B' competition St James' beat St Matthew's to finish third.

The Festival is part of a national tournament and both Pembury and Brenchley & Matfield 'A' teams went forward to the County Finals at the St Lawrence Ground, Canterbury on 2 July to compete against 22 other Festival winners from across Kent. This year's event featured 310 children in 31 teams from 21 schools who played a total of 75 matches on 15 pitches and was organised by the Borough Council's Leisure Services in conjunction with the Kent Cricket Board.

This year's Festival was played as part of the Tunbridge Wells 400th Anniversary celebrations and a specially struck commemorative medal was presented to each child by the event sponsors, King Charles' School Old Boys' Association, represented by their President, John Exall. The Mayor of Tunbridge Wells, Councillor Ron Weeden, who is also the Champion of the 400th Anniversary in his mayoral year, also presented trophies and medals.

---

## JAMIE BOXALL – *A Blue Sky Story!*

WITH THE recent publicity surrounding the anti-social behaviour activities of a small number of youths in the village it is easy to forget that we have a vast majority of ‘good ‘uns’. As a responsible and caring community I am sure that many of us support the development and aspirations of any young individuals and, within the following text, I am pleased to offer a fine example of cohesive action.



It was at a Parish Council meeting that many of us first heard of young Jamie Boxall. Those of you with sharp eyes may remember he had featured in the Pembury Players’ pantomime at Christmas. His mother, Fay, had written to the Parish office asking for help in assisting him to participate in a course at the National Youth Theatre (NYT). Jamie had qualified for the final selection after competing against many other hopefuls (over 4,000 young people were auditioned by the NYT initially) and was invited to attend a course at the Laban Centre in London in August of this year. There was, however, one catch whereby the course would require funding of £650 for teaching and residential accommodation, let alone travel and eating. Jamie wrote and (in most cases) hand delivered the letters asking for help. He sent the letter to most local businesses and the councils (Pembury and TWBC) but received rejection letters from them and from Tesco. He did, however, receive help from the Camden Arms. All the other businesses didn’t even reply to his letter. Fay relates that she was so pleased to get a letter from Parish Councillor Jennifer Ayres who advised the Boxalls that she had forwarded their letter to me. It is always difficult and virtually impossible to fund individuals from the public purse, be it Parish or Borough, but I offered to pick up the baton on this one and made some enquiries.

I contacted the Town Hall and, as I suspected, my presumptions were well-founded although I was offered some useful advice to contact local fundraising groups to ask if they might help. Firing off emails at a rate of knots, I was encouraged to receive a reply from Mark Hall of the Royal Tunbridge Wells Round Table that offered a glimpse of light at the end of the tunnel. The ensuing dialogue set the wheels in motion and, having kept the Boxalls abreast of progress, the Round Table was wonderful in providing the full funding amount for Jamie. I am sure that you will join me in wishing Jamie every success with his acting career and my thanks to all who have helped me in making his dreams a reality.

**Paul Barrington-King**

*Fay Boxall would particularly like to thank the Pembury Players, Paul Barrington-King, the Tunbridge Wells Round Table, Cllr. Jennifer Ayres and James Cunningham and those donors who gave via the Kent & Sussex Courier.*

---

## GERMAN VISIT TO PEMBURY

AS PART OF the Tunbridge Wells 400th Anniversary celebrations, the twin town of Wiesbaden sent a high level delegation to join in the June events. The Mayor of Wiesbaden, the Leader of the Council and their colleagues were taken on a whistle-stop tour of the Borough on 17 June by Tunbridge Wells Council Leader Melvyn Howell.

Stopping off at Pembury, they were welcomed by Parish Council Chairman David Coleman, Vice-Chairman Steve Morton, Cllr June Crowhurst and Cllr Alison Morton.

As readers will have seen from the previous edition and this one, Pembury Borough Councillor Paul Barrington-King had been busy forging cycling links with Wiesbaden to raise funds towards new play equipment for the Lower Green

Recreation Ground (see pages 20-21). The German visitors therefore came to see the Recreation ground to see where the money was to go. They were also very interested in the rest of Pembury, particularly housing, and made a short detour to see Bulls’ Place and Belfield Road.



*Parish Council Chairman David Coleman outlining possible ideas.*



**HANGING BASKETS MADE TO ORDER**

**always  
something  
different**

**10% DISCOUNT  
WITH THIS  
ADVERTISEMENT**

excludes sale items  
& special offers

**importer**

olive citrus & palms  
1000s of garden pots  
clay glazed  
& metal

**grower**

peat-free bedding &  
unusual patio plants  
organic herbs  
& vegetables

**supplier**

garden & house plants  
bulbs flowers hedging  
seed potatoes  
onion sets

**Prima Pots @ Kings Toll Nursery**

Maidstone Rd. Matfield TN12 7HA ( B2160 )

**01892 824474**

open 7 days - carry to car service - friendly advice

**DROP-INS** INSTANT CONTAINER GARDENING



**PHYSIOfirst**

**Physiotherapy in your own home**



Mrs Margaret Holmes MCSP  
Tel: 01892 825201  
Mob: 0772 0048047  
make your appointment today

A Chartered Physiotherapist available for home visits. All physiotherapy treatment undertaken following a complete assessment during first consultation.

---

## SNIPPETS

### SAHARA TREK

'Brian of Arabia' Horgan wrote in the last edition about his fundraising Sahara trek. The whole group together raised £63,000 for various charities of which Brian raised an impressive £3,000. Well done, Brian!

---

### AN APOLOGY . . .

The fabulous cover photo taken flying over Pembury was the hard work of Rodney Solomons, not Rod Salmon. He seemed fine about it, but your Editor is off to the audiologist!

---

### LOWER GREEN RECREATION GROUND PAVILION

The pavilion has been in a poor state for some time despite great efforts to keep it usable. Plans for the new one are going along steadily and grants are now being sought. However, it was uneconomical and illogical to spend money on an old building being replaced in the near future. On a recent visit by Parish Council and police representatives, it was decided the pavilion was no longer safe, so the Council arranged for it to be demolished. A temporary secure portable changing room container has been put on the site, with a separate storage container for the football club equipment. The Scouts & Guides were kind enough to step in and house the equipment and provide changing facilities in the interim.

---

### COMPAID UPDATE

COMPAID Trust, the Pembury-based charity for disabled adults, urgently needs to raise funds secure a new, permanent home when Pembury Hospital, its home for the past 21 years, is redeveloped. However at the beginning of August the charity learnt that it can remain at the hospital until the end of December. COMPAID's 'Save Our Services' appeal currently stands at £60,000 but so far no suitable site or premises has been found. Up to 80 disabled people a week attend COMPAID's activity centre at Pembury Hospital and the charity's minibuses are a familiar sight providing transport to shops and amenities for a further 350 disabled, elderly and vulnerable people a week.

If you come up with a brilliant fundraising idea, or you know of a suitable site or premises, please contact Betty Howell on tel. 824060 or email [compaidtrust@btinternet.com](mailto:compaidtrust@btinternet.com). There will be a Coffee Morning on behalf of COMPAID

at the Tunbridge Wells Football Ground Social Club, Culverden Down on 13 September, with raffle, tombola, cakes and surprises. See you there!

---

### STEPHEN UPDATE

You may have seen local newspaper reports in June about the callous theft from Stephen Addley's savings account. Stephen, of Elmhurst Avenue, has cerebral palsy and was saving up for a sailing holiday organised by the Jubilee Trust for disabled and able-bodied enthusiasts to work and holiday together.

However, that is not the end of the story. Donations from readers and people around the whole area poured in. Stephen's adoptive mother, June Crowhurst, writes, "Thanks to the newspaper reports to the wonderful people of Pembury who are truly magnificent. They totally raised the money for his voyage at the end of August when he sails over to France, and back into Southampton on 4 September.

Even more, the readers of the Courier and the Assembly Hall staff got together and made a huge push to help him realise his bigger dream. Thanks to Jenna (Courier) and Brian (Assembly Hall) Stephen is now off to Antigua on 17 January for 2 weeks. Stephen is just so excited!

People's generosity is humbling and makes you aware that we live in a very good community."

---

### JEMMA ALEXANDER

Jemma Alexander, Pembury Baptist Church's Community Project Leader, is now on maternity leave. If you have any queries about current projects or would like any information, please telephone the church office on 01892 825590

---

### TACKLING GRAFFITI

GraffitiHotline.co.uk has launched an online discussion forum that covers any issues surrounding graffiti, fly posting and antisocial behaviour. We hope that you will contribute to it and find the debate both informative and interesting.

As part of the launch we are conducting a national survey into the success of Community Art Projects and Murals. We want to hear your thoughts and experiences on their success and the lasting results of any projects in your area. For more information please go to [www.graffitihotline.co.uk](http://www.graffitihotline.co.uk).

## WHAT ARE YOUR VIEWS? REGENERATING LOWER

PEMBURY IS NOT well provided with recreation space. The national minimum is six acres of space per 1,000 people. Pembury has over 6,000 residents and other than the Village Green and the isolated football pitches at Woodside (accessed through Henwoods Mount), the Lower Green Road Recreation Ground is the only area available. This now looks tired and shabby and is not meeting all residents' needs. After obtaining advice from an expert consultant, the Parish Council has embarked on a two stage approach. You will have seen references in several earlier editions of the Pembury Village News, including the Annual Parish reports, for the past two years. Enthusiasm for new facilities has been expressed by groups raising money for the small children's play area. No doubt some of you have been following and/or supporting Paul Barrington-King's epic fundraising cycle ride from Wiesbaden and Dee Barrington-King's team of young mothers raising funds from the March theatre performance and the May dinner dance.

The first stage is the replacement of the young children's play area with a modern playground sited closer to the site of the old pavilion and replacing rather old play equipment. The new playground, away from the current isolated site, will allow clear visibility on all sides and be closer to the new pavilion with toilets and hopefully a snack facility. Following a consultation exhibition in May to ask potential 'consumers' and their parents which scheme they preferred of the five on offer, one was selected and should be installed soon.

The second stage is more ambitious and it is important that the views of residents and village organisations are fully explored on this. The Lower Green Recreation Ground is **not** a park; it is a recreation ground which means activities, games and leisure pursuits. In light of approaches and requests over a considerable period for more facilities, the Parish Council is particularly keen that there is something for **all** ages and all residents. However, due to



the limited space, we need to make the very best use of the small number of options open to us. Although the Council has 'saved up' a considerable amount over the past few years so that it can get this initiative going, it will be carried out over a



## ER GREEN ROAD RECREATION GROUND

period. As they say, Rome wasn't built in a day!

The Parish Council is proposing to build next an **older children's and young persons' area** roughly where the infants' playground is now. Basically, this would consist of a hard play area within a robust fence with some sports markings, goals, basket hoops, seating and other features. An illustration (indicative only of the type of area) is below with some pictures of the sort of equipment it could contain. Another idea being floated is a low level skate park. Locating these facilities down where the former infants' area was will mean it is away from housing.



As a considerable number of people walk across the ground each day between Westway and Woodhill Park, a **surfaced footpath link** is proposed to provide a mud-free walk. This will be particularly useful when we eventually get some rain!

Other requests have come from **older residents** who would like to have a quiet seating area, just for chatting and relaxing.

None of these proposals will adversely affect the existing use of the ground, for example, the junior football pitches. The current partnership with the Pembury Athletic Football Club to replace the pavilion will continue, which is needed now more than ever. This will also allow for public toilets and some refreshment facilities when built.



### So, now over to you!

We really need to know your views. This is a big investment, not only the money but in time, effort and emotion. We need a proper place to de-stress, play games and have fun. Please take a



few minutes to fill in the questionnaire enclosed in this edition of the News.

You can return it direct to Pembury Parish Office (details on page 38) or via collecting boxes in the three churches, Pembury School, the library, the Village Pharmacy, The Camden Arms, the Royal Oak, the King William, via the Scout and Guide organisations, the PAYFC or the Village Warden. Alternatively, you can post it back to us. Closing date is 20 October 2006.

Many thanks for your help.  
**Pembury Parish Council**

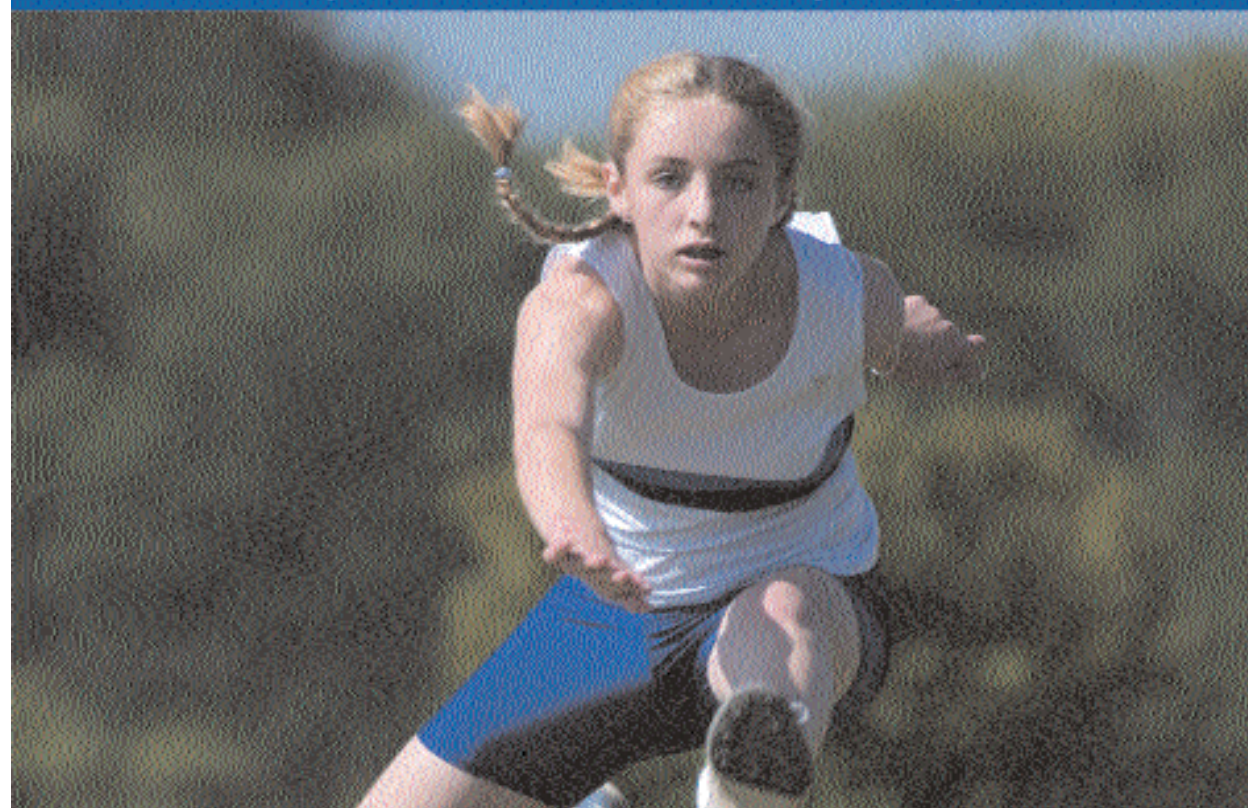




## Kent College Pembury

An independent school for girls aged 11-18

# Nurturing Confidence, Inspiring Success



Building self-esteem is at the very heart of our ethos. All girls get a chance to shine, try something different, feel good about themselves and develop new and existing talents. Exciting opportunities to develop confidence are an integral part of school life: overseas music, drama and sports tours, an Australian exchange, 65 extra-curricular activities, and leadership courses, to name a few. Our aim is to equip students with the confidence, skills and positive attitude to succeed in their GCSE and A-level examinations, university and in their chosen career.

"The School has many strengths ... teaching is very good overall, and often excellent, enabling pupils to achieve very well and make very good progress ... excellent wide-ranging programme of extra-curricular activities ... very high levels of pastoral care."

Independent Schools Inspectorate Report, 2004

**Listed 5th in Kent in the Valued Added league tables, January 2005**

Kent College Pembury, Old Church Road, Pembury, Tunbridge Wells TN24AX  
Tel: 01892 822006 Email: [admissions@kentcollege.kent.sch.uk](mailto:admissions@kentcollege.kent.sch.uk) [www.kent-college.co.uk](http://www.kent-college.co.uk)

---

## THE SILVER JUBILEE FOR THE CATHOLIC PARISH OF ST JUSTUS AND ST ANSELM

**T**HIS YEAR THE Catholic parish of St Justus (Paddock Wood) and St Anselm (Pembury) is celebrating its Silver Jubilee. The celebrations began on Tuesday 28 February 2006 with a parish mass celebrated by Reverend Kevin McDonald, Archbishop of Southwark, to which all former clergy of the parish were invited. The Parish has been served during this time by Fr John Hartley, Fr Tim Buckley, Fr Joseph Levins, Fr Geoffrey Pointer and now Fr Liam Gallagher. We also have close links with Fr Joseph Aduse in Ghana who visits us each year.



Sunday 16 July in Pembury was the day the Parish celebrated with a well organised outdoor mass attended by about 170 parishioners. The weather was glorious, too hot for some, and the service went very smoothly. Afterwards chairs were rearranged for a massive parish barbeque, with roasted pig, sausages and burgers and plates of every kind of salad you could name, rounded off with strawberries and cream. To complete the celebration 'Marvelo' the entertainer kept the children enthralled with his magic tricks and games. It was a great celebration and we hope with Fr Liam Gallagher the Parish will gain strength and show great spiritual presence in the village.

---

## GOING NATIONAL!

**K**EITH MERRIN, a businessman from Pembury, had his company shortlisted for a prestigious national training award. Managing director Keith runs training firm 'Athelbrae' from his home in Lower Green Road. The company beat off competition from more than 100 entries to be shortlisted in the best externally developed and delivered programme category of the Training Journal Award.



The industry awards were held at the journal's headquarters in Westminster on 29 June and although they didn't win, Keith reports that the winners were a large Consultancy – Blue Sky – who I have worked for as an Associate over the last eight years!

He added, *"Whilst it would have been nice to have had some glassware to dust, I wasn't wholly surprised given the size of the shortlist and the larger companies who were also in the running. We were delighted that we had reached the final stages and hopefully will be able to apply again in the future."*

Keith is also the Community Correspondent for Pembury for the Kent & Sussex Courier, so if you have any events going on or interesting things to report, do get in touch with him (824858, email: [courier@athelbrae.co.uk](mailto:courier@athelbrae.co.uk))



## PEMBURY IN THE PAST

### Pembury – As I remember it – Part 2

Elmhurst Avenue was a micro community. At one time I could remember the names of everybody who lived in the road but the passage of time has affected the old grey cells. My school mate was David Tolhurst who lived 2 houses down from the twitten. David and I got into all sorts of scrapes after school. We often went down Stone Court Lane to play on the high banks, sometimes we got right to the bottom before the geese on the farm pond chased us away. Time was the least of our worries and I was sent to my room on many occasions for coming home late. My mother used to stand at the gate with her arms folded across her chest and I knew I was in big trouble.



Outside 22 Elmhurst Avenue was a lamp post where all the kids gathered in the evenings. Communal skipping with a long rope tied to the post often enticed the grownups to nip in and out of the twirling rope. Cricket was played in the road outside the Gorringe household and most of the lads in the street played or fielded at one time or another including the two Marchant brothers who were good at the game. Stumps were an apple box and had to be moved if a car came down the road but as it is a cul de sac this was very infrequent. Opposite our house lived Bob who sometimes brought his steamroller home for the night. This slumbering monster was parked overnight on the grass verge with the fire banked up – it was always gone by the morning with only the smouldering ashes on the verge to betray it was there. Next door to us was Mr Wickenden who drove for Maidstone & District Bus Company and mended cars as a hobby. My dad knew nothing about vehicles and the first car he bought, an Austin Seven, CTT126, was held together with wooden pegs. Frank put it right for us in the garage he had built at the side of his house. I used to spend hours next door watching and I suspect this time sowed the seeds of my career in later life.

Old Mrs Cass who lived at 24 next door was a real character. She travelled everywhere on a sit-up-and-beg cycle and always wore a tan gabardine raincoat. I expect she had other clothes but this particular coat remains in my memory. Because the brakes on her bike never seemed to work very well she always finished her journey by getting off the bike whilst travelling at a considerable speed and running beside the bike to stop by her gate. Her cat used to spend the night in the wood pile below my bedroom window. I was often woken by its screeching so I kept a half brick on the window ledge to push off and crash on the corrugated iron covering our wood. Peace restored!

Mr Brown who lived in the corner house right at the bottom used to organise bus trips on Sundays for the entire neighbourhood. I recall several double decker M&D buses, possibly driven by Tubby Turner and Frank Wickenden arriving in the road early on Sunday mornings. Everybody trooped out of their houses and onto the buses and the street seemed eerily empty during the day. George and Chloe were devout church attenders and a trip to the seaside was not what we did on Sundays!! This is not to say I never went to the seaside – I have a photo of the three of us on the way to Brighton beach – me looking as miserable as sin. Perhaps it was a cold day.

Lots of families in the street kept chickens; I believe we were encouraged to do this as part of the war effort and the habit continued long after the war ended. Ours were at the bottom of our garden in an enclosure that was the full width of the plot so we were able to have at least a dozen hens, sometimes more. My job was to feed them, top up the water and collect the eggs. I could never understand why you needed to give chickens crushed sea shells and a foul smelling red powder called ovum in their food. The hedgerow behind the chicken run often

became the home to rats that were after the eggs so it was a real excitement when several neighbours arrived with nets and spades. All possible exits were blocked bar one and this was netted just after a smoke bomb was put down the hole. It always seemed to take for ever before one ran out and got caught in the net and was shovelled off! I expect several ran out the back door into the field!! We always seemed to have plenty of eggs, my mother pickled them and I was expected to eat at least one every day for breakfast. My father killed a chicken every now and then for Sunday lunch. He would do the deed down the garden and bring the bird back and hang it in the shed or over the bath to bleed. Sometimes spasmodic twitches would convince me the bird was not dead.

I only got out of the feeding routine by taking a paper round job. From home I had to ride up Henwood Green Road and up to the Mount; Mr Ireland's house was in the corner and was always cosily warm on cold winter mornings. If I was lucky Mrs Ireland had made up my round and I could leave immediately but as I progressed I learnt the round and put up my papers myself – 12 Telegraphs, six Times, but only three Daily Sketch. I had 112 houses in all starting just below the grass triangle below the Mount and finishing next to the Butchers beside the Royal Oak. Over the time I did the round, the allotments behind the Baptist church were built on and I used to deliver to the flats there. Afterwards it was a mad dash home to Elmhurst Avenue, grab something to eat, avoiding the egg if possible and run back up the twitten to the bus stop on Stone Court Lane to catch the Bus from Five Oak Green. Many a time I jumped on the platform as the bus was pulling away up Maidstone Road. You will have gathered that I went to secondary school in Tunbridge Wells, having passed the 11-Plus. This turned out to be the biggest disaster of my early years and set family against family and I was in the middle.

**Mike Crouch**

## PEMBURY VILLAGE MARKET

**T**WENTY YEARS AGO Sue Boreham became involved in the Village Market in Pembury. It was then a thriving hive of activity, and although the organisers paid rent/hall fees, they were able to make charitable donations of about £2,000 a year.

Following a break while the old hall was demolished and the new hall was built, the Market sprang up again as a fundraising arm of the Village Hall.

Through changing circumstances many of the original volunteers and stallholders have left, and in recent years organisations in the village, namely the Bowls Club, St Peter's Church and the Baptist Church have helped out on a regular monthly basis providing kitchen staff and stallholders.

Recently, however, although still a popular meeting place, attendances have dropped and revenue towards the funding has decreased. Sue Boreham and her partner Eve Fiddimore

have now decided to take a break, feeling that new blood and new ideas are needed.

*Your Editor comments: Sue and Evelyn have provided a terrific service to the community over the years and we owe them a big 'thank you' for all their unstinting hard work. It takes a great deal of dedication, resolve and drive to balance all the elements needed to keep such an enterprise going.*

*Things change - this is a natural process. Karol Young (tel. 823413) and Julie Potten (tel. 824479) have picked up the baton. The market will re-open on Tuesday 19 September, times as before.*



*Left to right: Pat Crouch, Peter Brown, Sue Boreham, Jean Dorrington. Jean and Pat have been two of the 'regulars' and made a small presentation in appreciation of all that Sue and Peter have done.*

# The national agent with local knowledge.

Get the best of both worlds with **YOUR MOVE.**

Contact your local branch on **01892 825355\***  
or visit our website

**www.your-move.co.uk**



**YOUR MOVE**

Moving made easier

\*Calls may be monitored and/or recorded for training and/or data protection purposes.

## West Kent Shooting School

We offer the most comprehensive range of Clay Pigeon shooting facilities in the South East of England



**YOUNG SHOTS DAY**

**GIFT VOUCHERS**



**www.wkss.demon.co.uk**

**Open Tuesday to Friday  
from 10am to 5pm**



**LADIES DAYS**

**CORPORATE EVENTS**



**Lessons available for Novices  
& Experts by appointment**



**English Sporting, Compact  
English Skeet & Pheasant Flush**

**New Hay Farm, Old Hay**  
(off Pearsons Green Road)  
**Paddock Wood, Kent TN12 7DG**  
Tel: 01892 83 4306  
info@wkss.demon.co.uk



---

## A WATER METER STORY

**W**ITH THE BARRAGE of discussion and television coverage now taking place concerning the shortage of water in the South East, coupled with the steady increase in the charges made upon all of us by those who supply the stuff and take it away after we have used it, you may have considered the moral and economic concerns associated with the fitting of a water meter.

I realised earlier this year that the water charges we would be expected to pay for the coming months would be much the same as those for the combined electricity and gas usage, so I decided to investigate the true benefits that we might enjoy were we to meter our water. The result turned out to be surprising and so we made a considered decision to go ahead; we are now in the fifth month 'on the meter'. In the course of this period it became apparent that there were a few lessons to be learned, so I am passing these on to you in case you have toyed with the same idea.

We have two water companies to deal with in parts of the village; South East Water for the supply and Southern Water for its disposal. Having contacted South East Water for the details of the provision and subsequent usage of a meter I heard nothing, so after a couple of weeks I had to chase them for the paperwork. Subsequently, on return of the application form the meter was fitted within a month and the installation in the footpath outside the house in the same place as the previous old stopcock was neatly completed. As such, it is a bit difficult to obtain a meter reading but much the obvious place to site the meter.

If you decide to get a meter, then make sure that you read it at the time of its installation – then read it at regular intervals afterwards so that you can experience the well-earned glow of saving water and money! If you have two water companies to contend with, then tell the waste-water one that you have had a meter fitted; it is best to write this confirmation and if you have one, two or three people living in the premises you should find that your water disposal bill is reduced. I am told, then assured, that the two water companies do communicate with each other but to date in this month five of being metered this has not been the case. Maybe because there is an element of competition between them so that they would rather not become too intimate, or perhaps it is because they both have their origin in the civil service-run publicly owned water organisation, but there does seem to be a certain reticence towards close co-operation. The mills of God, etc.

Regarding the saving in expenditure, with two adults in the household and on current charges levied on water volume, it would appear that the cost to us for the provision of water is about half of what it would have been before the change to a meter. The same reduction also applies to the charge for the removal of waste-water. So. It looks like good news, and when the charges per cubic metre of water rise in the future, there's a certainty that other methods of obtaining revenue for the water companies will increase even more. And don't forget, if the fitting of water meters becomes mandatory, then you might as well do it now and enjoy the savings in the meantime.

Of course, if you have a large family then the voluntary change to a metered supply is probably not for you unless you have a huge and expensive house; in which case you are probably on a meter already! For us, however, it was a 'no-brain' decision.

Finally, on a lighter note, remember what W. C. Fields almost said about water:  
"Ugh, can't stand the stuff – fish make love in it . . . !"

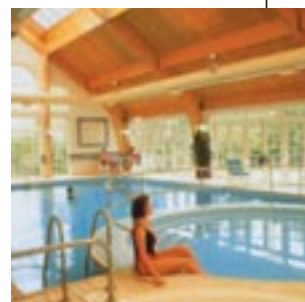
**Derek Johnson**



**We are more than just a bedroom . . .**

A modern hotel offering:

- 84 En-suite bedrooms including Luxury Suites as well as Meeting Rooms for 2 to 120 guests.
- Events such as Wedding Ceremonies, Corporate Entertaining, Christenings, Dinner Dances including Tribute Nights and Murder Mysteries.
- Poolside Club and Spa and new Beauty Studio.
- Great dining in our Mallows Restaurant offering an exciting choice of freshly prepared lunches and evening meals. Traditional Sunday Carvery every week. Themed evenings including Seafood Nights, French Nights and Summer BBQs and Disco.
- Relaxing Oast Bar and comfortable lounge for a relaxing light bite, refreshing drink or a selection of teas and coffees.
- Poolside Club – an atrium of tranquility with swimming pool, sauna, steam room and spa bath.
- Open to all – Pop in and see!
- Just 150m from Pembury Hospital and a few minutes' walk from the village.



Tonbridge Road, Pembury  
Kent TN2 4QL.  
Tel: 01892 823567  
Fax: 01892 823931.  
[www.ramadajarvis.co.uk](http://www.ramadajarvis.co.uk)

# G. F. GROVES

**YOUR FRIENDLY LOCAL BUILDER**

**CARPENTERS  
JOINERS**

**BUILDING  
CONTRACTORS**

**EXTENSIONS/CONVERSIONS/NEW-BUILD**

**PLANNING SERVICE AVAILABLE  
PURPOSE-MADE JOINERY**

**FREE ESTIMATES • FAST SERVICE**

**Telephone (01892) 838619**

---

## MY PLOT

I REALLY HAVE had one of my best summers ever on my plot this year. I blame a combination of good fortune, most significantly the re-kindled interest of my other half – lending some very welcome muscle power and probably two hundred watering miles, to and fro from the tap with watering cans . . . I don't know why but I wasn't too troubled by pests; a few blackfly on my broad beans, no carrot fly, not that much slug damage, although rather a lot of flea beetles.

Last year I could not get a parsnip to grow for love nor money. I sowed them all over the place at different times, just like I did successfully the year before – nothing. Yet, when an old plant from the previous year flowered, it self-seeded all over the place. Perhaps the secret is to use very fresh seed? Anyway, I kept this ad hoc area of parsnip seedlings to see what happened. After months of careful weeding (hoeing impossible as no rows or straight lines of any kind) they either went straight to seed or look like 'wild' plants with hardly any root at all. Huh, what a waste of time!

My broccoli has also done something unexpected; it cropped for the second year in a row. I always thought they died after they had flowered, but apparently not. I am leaving them in again, since all the while they are still healthy and making food, they've earned their right to live.

But the best thing of all is that the horsetails which blanket the ground if I don't pay attention, have met two enemies. Firstly, I tried a product called RootOut which really seems to have made a difference on the areas where it was used last year. Secondly, horsetails make good roofing for camps. After emptying a compost heap made of four wooden pallets, I was about to start using it again when I found that squatters had moved in! Two young daughters had adopted it as their den. A clip-together path had become carpet, wooden boxes were furniture, a garden was even dug around the front door and three packets of seeds poured on. And the roof was built with bamboo canes rafters, covered in bundles of horsetails for thatching!

Lastly my Victoria Plum: it had yet another bumper year – the 5th in a row. I wonder how long can it go on?

**Caroline Mazzezy**



---

## KING WILLIAM PUBLIC HOUSE

MEL THORNTON and Sandy Canham have taken over the King William Public House on Hastings Road. Mel comes from The Rose and Crown in Tunbridge Wells where she worked for 13½ years. Sandy comes from The Royal Oak in Crockham Hill near Edenbridge where, as head chef, she gained an excellent reputation for her cooking.

Sandy will be introducing her cooking, offering traditional home-cooked value-for-money pub food. There will be regular live

music nights (every other Friday), theme nights and charity events – also the popular Sunday night quiz. The large garden is currently being altered to make a child-friendly, safe environment which will be used to hold barbecues, hog roasts and children's entertainment, to appeal to families.

Mel said: *"Our aim is to run a friendly, happy, community pub with something to appeal to everyone from families to OAPs, sports and music enthusiasts to people wanting a quiet drink and a bite to eat."*



# Heritage New Drives

*Block Paving Specialists*

[www.heritagenewdrives.co.uk](http://www.heritagenewdrives.co.uk)

Tel: 01892 723849 Mobile: 07785 112583

*Thinking of a new drive?*

*Free Estimates – Give us a call*

*Paydon, Petteridge Lane, Matfield, Tonbridge, Kent TN12 7LX*



- Accounts Preparation
- Personal & Company Taxation
- Bookkeeping & Payroll
- Business & Tax Advice

APEX ACCOUNTANCY OFFER A FIRST CLASS SERVICE FOR ALL OF YOUR ACCOUNTING AND TAX REQUIREMENTS. CALL NOW TO FIND OUT ABOUT OUR FIXED FEES, EXCELLENT SERVICE AND HOW WE CAN HELP YOU.

Tel: 01892 835738 or 07736 938411

Email: [info@apexaccountancy.co.uk](mailto:info@apexaccountancy.co.uk) Website: [www.apexaccountancy.co.uk](http://www.apexaccountancy.co.uk)

**10% REDUCTION ON OUR FIXED FEES WHEN YOU MENTION THIS ADVERT WHEN CALLING**



**Home Improvements – Extensions – Free Estimates**

# ALAN CLARKE

**BUILDERS & DECORATORS**

**Tel: Pembury 823932**

## JAN'S GARDEN VIEWS

**M**OST OF US are always sad to see the end of summer but all seasons have their virtues including autumn. As the light levels fall, leaves begin to turn into a riot of magnificent colour. Seed-heads and berries abound enhancing our gardens and making provision for our ever-hungry birds. There are many national gardens to visit where, at this time of year the Acers and Azaleas particularly, are completely dazzling.

Cyclamen Hederifolium are hardy dwarf outdoor Cyclamen. They produce dainty mauve, pale pink or pure white flowers that last for weeks. These enchanting plants have fascinating decorative foliage with silver markings that appear as flowers fade. Essentially a woodland plant, it grows best in the shade of deciduous trees. Evergreen ferns and snowdrops make good companions. Always plant these Cyclamen from pots in growth. The tops of the corms should be level with the soil or just submerged amongst free draining compost and leaf-mould. Plant during September for a late autumn show; they will generally self-seed, eventually forming a pretty naturalised colony.

Evergreens, shrubs and trees can be planted throughout the autumn, but beware of early frosts. November is ideally the best time for planting trees, but which to grow needs careful thought, so never buy on impulse. They can cause great damage if planted too close to the house so check the variety you want is right for your garden. Small trees establish more quickly than large ones. Check for signs of damage or disease. There are many smaller and special trees that grow to under twelve feet from tree suppliers and these are usually sold bare-rooted and grow away far more successfully than containerised ones.

All trees, no matter how tall, have shallow roots which are at least equal to the height of the tree in full growth. They go out not down and rely on rainwater – some in vast amounts, especially when growing. The most common reason for trees to die is being planted too deeply. The diameter of the hole should be about twice the width of the root-ball. Cultivate the soil the roots will grow into and so long as the soil is moist and not water-logged or frosted, it should be fine to plant. Provide a bit of extra support by staking held with a flexible tree tie for at least their first

year while the roots become established. To help conserve moisture lay a mulch of wood chips spread loosely and away from the trunk, or mulch mats are available which keep weeds down. Remember, trees bring life to your garden in so many ways!

This is the time of year to think of planting for next spring, either with divisions or new plants. To maintain the vigour of Primroses and Polyanthus they need dividing every two or three years on rich heavier soil and on sandy soil, every year. Split the Primulas in September while the soil is still warm and receptive. Choose a cool day to lift them and ensure that they do not dry out. The clumps will pull apart quite easily to reveal several individual plants which can be snapped off the old woody root-stock. Discard any old leaves and trim roots to about four inches. Replant in groups in freshly prepared ground, or in a dug over and well-manured site in dappled shade that is cool. Under deciduous trees or between shrubs would be fine. Give them an occasional liquid feed and a mulch of leaf-mould or chipped bark to keep them cool and moist.

Some main jobs throughout autumn:-

- Several hardy annuals can be sown during September and will flower much earlier than if left till next spring.
- Finish planting all daffodil family by mid-October. Tulips in November.
- Lawns need raking to remove dead matter, then spiking to aerate.
- Apply a top dressing of sifted soil and sharp sand with lawn food to strengthen.
- Divide large clumps of perennials that flowered early and mid-summer. Later flowering ones leave till next spring.
- Cut back all spent flowers and foliage except those for winter protection and seed displays.

Enjoy the autumn colours! Happy gardening!

**Jan Davies**



**Dawn Hodgson** MSSCh MBChA  
**Chiropodist**

- Professional Advice and Friendly Care
- Diabetic Assessment & Maintenance
- Verruca Treatment, Natural Remedies or Chemical
- Ingrowing Toenail Care
- Treatment for Fungal Infections
- Day and Evening appointments available



67 Hastings Road, Pembury  
Tel: 07761 583 756  
01892 824916

Full range of  
Footcare products,  
including 100% Natural  
and Diabetic Friendly

Discounts for over  
over 70s

HSA 50% refund available

**10%**  
discount with this advert

## Are your carpets this fresh all year round?

The only way to deal with deep-down dirt, harmful mites and nasty niffs in your carpets and upholstery is with regular, professional cleaning.

To put the colour back into your home, simply call:

**Rainbow International**

Unit 2, Apple Pie Farm, Cranbrook Road,  
Beneden, Cranbrook, Kent TN17 4EU  
email: e.novoa@rainbow-int.co.uk  
web: www.rainbow-int.co.uk

**CROWBOROUGH & NORTH SUSSEX**

**01580 243311**

**01892 824244**

A FRANCHISE OWNED & OPERATED UNDER LICENSE

part of **ISS**  
DAMAGE CONTROL

**Rainbow**  
International  
CARPET CARE & RESTORATION SPECIALIST  
- a company in the ISS Group

# BEAUTYTHERAPY

**BY PAULA & MICHELLE**

EXPERIENCED THERAPISTS – CITY & GUILDS I.H.B.C. & N.V.Q. QUALIFIED

Phone **0795 2863106** or **0791 3409081** for appointments

**TREATMENTS AT COMPETITIVE PRICES**

- MANICURE • PEDICURE • MANICURE WITH HEATED MITTS • PEDICURE WITH HEATED BOOTS • FACIALS
- WAXING • MASSAGE • AROMATHERAPY MASSAGE • MAKE UP • ELECTROLYSIS • EYE BROW & LASH TINTING
- RED VEIN & SKIN TAG REMOVAL • FALSE NAILS • EAR PIERCING • EYE LASH PERMING • ST TROPEZ TAN

**SOUTHVIEW, ROMFORD ROAD, PEMBURY, KENT TN2 4BA**



## A PEMBURY QUIZ . . .

**S**IMON OAKLEY, who lives in Lower Green Road, sent us in this quiz. He introduces it below.

“I am a new resident to Pembury, moving into the area only 10 months ago – but have found it a very interesting place to live. I have

compiled a word quiz that is based upon Pembury. Do you think that you can answer the fifteen questions?

All the answers are in the word block; all you have to do is unscramble the letters”.

Hint: You can go up, down, diagonally.

p	n	k	w	i	e	s	b	a	d	e	n	c	b	q	a	g	j	h	z
e	e	l	k	d	a	s	n	d	l	p	o	h	k	t	b	c	a	c	j
m	d	m	u	o	v	a	e	a	r	b	t	h	e	g	r	o	v	e	c
b	r	a	b	d	f	g	d	m	a	e	c	j	l	b	q	t	i	e	p
u	a	d	a	u	f	j	c	a	v	n	u	m	o	n	e	b	t	q	m
r	w	s	c	z	r	a	e	r	k	t	t	h	k	r	w	o	r	i	l
y	y	m	g	k	s	y	a	r	i	r	t	c	v	n	t	p	i	o	e
b	t	a	v	h	n	a	v	c	b	a	s	t	p	e	t	e	r	s	s
a	i	i	o	q	a	d	g	i	j	q	z	s	l	y	d	e	b	s	n
p	n	d	a	v	i	d	c	o	l	e	m	a	n	o	o	p	h	k	a
t	u	t	y	q	m	c	z	a	g	l	t	e	q	k	t	l	w	e	t
i	m	b	a	m	a	g	j	g	d	p	a	r	t	h	o	d	k	l	s
s	m	r	s	c	t	h	e	w	l	i	s	g	a	h	n	d	k	l	f
t	o	b	d	m	f	s	r	t	u	l	z	q	e	q	y	h	j	y	o
a	c	a	n	t	e	r	b	u	r	y	j	d	f	n	b	v	m	h	l
q	a	p	e	r	p	e	g	e	l	l	o	c	t	n	e	k	m	o	e
n	u	r	e	c	a	l	n	d	j	f	s	a	c	m	n	w	r	l	p
e	n	o	t	s	d	i	a	m	g	h	e	j	g	f	n	a	s	m	a
d	s	p	e	p	i	n	g	e	b	e	r	i	a	a	g	l	p	e	h
t	h	e	c	o	p	p	i	c	e	e	u	r	t	w	c	b	u	s	c

### Questions

- (1) Paul Barrington-King completed a bike ride from ----- to Tunbridge Wells recently?
- (2) What is the name of the publication which is distributed four times a year by the Parish Council?
- (3) Which Labour MP was part of the panel for the long running BBC4 programme “Any Question” held in Pembury on Friday 14 April?
- (4) What is the name of Pembury Garden Centre?
- (5) What role does Tom Younger hold in the Community?
- (6) What is the name of the hotel in Tonbridge Road?
- (7) Name the three churches in Pembury?
- (8) Name the Head Teacher of Pembury School?
- (4) Name the Councillor who is the Chairman of Parish Council?
- (10) Name two roads that have a connection with trees in Pembury?
- (11) Name two roads that are called after towns in Kent?
- (12) Name the independent school for girls based in Pembury?
- (13) Which area of Pembury has lost her sheep, and can’t tell where to find them?
- (14) The original name for Pembury was?
- (15) Who was born in 1970 in Pembury, drove trucks in the army after school, normally competes in 800m and 1500m, thought about suicide in 2003, won two Olympic Gold Medals in 2004?

## ROSIE'S RECIPES

**T**HE SUMMER is coming to a close and the cold long evenings will be drawing in. So I have put together some recipes to warm you all up!

### Spinach and Celery Soup

This inexpensive and attractive soup has a delicious creamy lemony flavour and would make a satisfying prelude to any meal.

#### Ingredients for 6 servings

225g (8oz) spinach, thick midribs discarded  
25g (1oz) butter  
4 celery sticks, thinly sliced  
1 potato, cut into small cubes  
1 onion, chopped  
600ml (1pt) chicken stock  
200ml (7fl oz) milk  
250ml (8fl oz) whipping cream  
3 tbsp lemon juice  
Lemon slices, to garnish

#### Preparation

Finely chop spinach leaves into strips and set aside. Melt the butter in a saucepan and fry the chopped celery, potato and onion for 4-5 mins, stirring occasionally, until slightly softened. Add the chicken stock, bring to the boil and then simmer gently for 10 mins or until vegetables are tender. Blend in food processor or blender. Pour back into saucepan and add chopped spinach and milk, reserving a few spinach strips for garnish. Bring to the boil and then simmer for 5-6 mins or until spinach is cooked. Reduce the heat, add cream and lemon juice and cook until heated through. Pour into soup bowls and serve garnished with spinach and lemon slices.



### Beef in Wine

This traditional Austrian dish can be made with the cheaper cuts of beef such as shin, or any stewing beef.

#### Ingredients for 4 servings

800g (1½lb) beef, cut into 5cm (2in) pieces  
4 tbsp oil  
1 carrot, chopped  
100g (4oz) celeriac, chopped  
1 large parsley sprig  
450g (1lb) onions, chopped  
2tbsp tomato purée



120ml (4fl oz) German white wine  
250ml (8fl oz) beef stock  
pinch of mixed herbs  
1 bay leaf  
salt and pepper, to taste

#### Preparation

Brown the meat in heated oil in a flameproof casserole. Remove with a slotted spoon and set aside. Add the carrot, celeriac, parsley and half the onions. Cook until lightly browned. Add the tomato purée, wine, stock and mixed herbs. In a blender or food processor, blend the contents of the casserole to a smooth sauce. Return to the casserole with the meat and the remaining onion. Add the bay leaf, cover and simmer for 2 hours. Adjust seasoning, remove bay leaf and serve.

Good served with boiled potatoes and green beans, or noodles and a red wine.

For fast results reduce the cooking time by using more expensive cuts of meat, such as top rib.

### Surprise Party Peaches

A lovely hot peachy idea – peaches filled with a surprise almond and brandy filling. Use apricots, if you prefer.

#### Ingredients for

##### 4 servings

8 large canned peach halves, plus juice  
75g (3oz) trifle sponges  
40g (1½oz) ground almonds  
2 tbsp brandy  
3 tbsp apricot jam  
25g (1oz) chopped walnuts or flaked almonds



#### Preparation

Heat oven to 180°C (350F/Gas 4). Drain peaches, reserving juice. Crumble sponges and mix with ground almonds, half the brandy, 1 tbsp apricot jam and 2 tbsp reserved peach juice. Fill peach halves with mixture and place, stuffed side down, in an ovenproof dish. Warm remaining jam and mix with the brandy and remaining peach juice. Spoon over peaches and sprinkle with chopped nuts. Bake in oven for 15 mins, basting occasionally with juice, serve warm.

Good served with whipped cream or ice-cream.

Good warming, comforting food. Enjoy.

**Rosie Bass**

---

## FOR YOUR DIARY

**Village Coffee Morning/Market** – Village Hall Tuesdays 9.30am to 11.30am.

**Pembury Community Warden surgery** same days as above, 10am to 11.30am.

**WRVS Lunch Club** – every Wednesday at 11.45am in Pembury Village Hall during the school term time.

**CAB** – Pembury Library – Wednesday mornings, 9.30am to 12.30pm.

### October

- 4 St Peter's Mothers' Union: Survival in a Man's World – Denise Barnes – Upper Church Meeting Room – 8pm
- 5 Pembury Afternoon WI: Making paper flowers – Village Hall – 2pm
- 6 Pembury Evening WI: Working with the Red Cross – Village Hall – 7.45pm
- 7 Bring & Buy Tea for Pepenbury – 59 Highfield Close – 2-5pm. Details 822643
- 7 Pembury Footpath Walkers – 2.15pm – For meeting place, tel. 823212
- 9 Parish Council Meeting – Village Hall – 8pm
- 12 Pembury Gardeners: Organic Vegetables (Yalding Organic Gardens speaker) – Catholic Hall – 7.45pm for 8pm
- 16 U3A Inaugural Meeting – Catholic Hall – 2-4pm. Details 824327
- 28 Pembury Gardeners: Halloween Fancy Dress and Line Dancing – Village Hall – 8pm

### November

- 1 St Peter's Mothers' Union: Pastoral Assistant Training – Pauline Hawker – Upper Church Meeting Room – 8pm
- 2 Pembury Afternoon WI: Annual General Meeting – Village Hall – 2pm
- 3 VILLAGE FIREWORKS – Lower Green Recreation Ground – 7.30pm
- 3 Pembury Evening WI: Annual Members' meeting – Village Hall – 7.45pm
- 4 RNLI (Lifeboats) Autumn Fayre – Catholic Hall – 10am to 12 noon
- 4 Pembury Footpath Walkers - 2.15pm – For meeting place, tel. 823212
- 6 Hospice in the Weald: Christmas Market – Hospice – 11am to 4pm
- 9 Pembury Society AGM. Talk by Deputy Lieutenant of Kent – Village Hall – 7.45 for 8pm
- 13 Parish Council Meeting – Village Hall – 8pm
- 12 Remembrance Sunday – Upper Church – 10.50am
- 18 Pembury Ladies' Breakfast – Ramada Jarvis – 8.30am. Details 825590
- 18 St Peter's Autumn Fayre – Upper Church – 10am-12noon
- 21 Pembury Players' Boogie Night – Village Hall – 8.30pm
- 25 St Anselms' Christmas Fayre – Catholic Hall – 12noon to 3pm

### December

- 1 Pembury Evening WI: Christmas Party – Village Hall – 7.45pm
- 2 Pembury Footpath Walkers - 2.15pm – For meeting place, tel. 823212
- 3 Taizé Service – Upper Church – 6.30pm
- 6 St Peter's Mothers' Union: Christmas Supper – Upper Church Meeting Room – 8pm
- 7 Pembury Afternoon WI: Christmas Party – Village Hall – 2pm
- 9 Christmas Concert by 'Quorum' – Old Church – 7.30pm
- 11 Parish Council Meeting – Village Hall – 8pm



## CRIME IN PEMBURY

**I**T IS OBVIOUS that I spoke too soon and let the previous quarters' figures – January, February, March (42) go to my head. Unfortunately, it is back to earth with a bump; April, May and June recorded incidents coming in at 60 – an increase of 42% and these figures do not include the attacks on the Bowls Club and Football Pavilion.

The worrying factors are the increase from 3 to 8 for assault, 12 to 20 for criminal damage and theft offences from 3 to 11. We have to drive these figures back down otherwise we let these criminals decide the

quality of life in the area around the village. Obviously, I am going to say to the police, it is time to produce. However, I also say to the major users of the Recreation Ground, i.e. football club, parents and managers, bowls club, tennis club, Scouts and Guides and the general public who want the use of decent facilities for their children to talk to each other, get mobile and report them to the police with evidence such as photos.

We must support the police at all times but we need their support, not just fancy words about new initiatives.

**Hugh Boorman**

MONTH	Assault	Burglary Dwelling	Burglary other	Criminal Damage	Raid and Deception	Drugs	Theft from Motor Vehicle	Theft of Motor Vehicle	Theft offences	Other offences	TOTAL
<b>April 2006</b>	2	1	1	9	2		1		7	1	24
<b>May 2006</b>	3	2	1	5	2		2	2	2		19
<b>June 2006</b>	3	1	1	6	2	1	1		2		17
<b>TOTAL</b>	<b>8</b>	<b>4</b>	<b>3</b>	<b>20</b>	<b>6</b>	<b>1</b>	<b>4</b>	<b>2</b>	<b>11</b>	<b>1</b>	<b>60</b>
<b>ROAD</b>											
A21 B						1	1				2
Beagles Wood Road	2			2					1		5
Belfield Road								1			1
Bulls Place									1		1
Hastings Road	1	2						1		1	5
Herwood Green Road	3			2					1		6
Heron's Way									1		1
High Street				1	6						7
Knights Close									1		1
Lower Green Road	1			9							10
Maidstone Road			1				1		2		4
Old Church Road									1		1
Petersfield				1							1
Romford Road									1		1
The Grove	1			1							2
Tonbridge Road		2	2	3			1		2		10
Woodhill Park				1			1				2
<b>TOTAL</b>	<b>8</b>	<b>4</b>	<b>3</b>	<b>20</b>	<b>6</b>	<b>1</b>	<b>4</b>	<b>2</b>	<b>11</b>	<b>1</b>	<b>60</b>

## REPORT A PROBLEM

### Abandoned Vehicles

If you suspect that a vehicle has been abandoned please call the Client Services Team on 01892 554178 or 554246. Alternatively if you wish to leave an anonymous message phone 01892 548154 for our 24-hour dedicated hotline.

### Anti-Fraud Benefits Hotline

Please call our confidential Hotline on 01892 554107, complete our online form or for more information please visit the web page.

### Anti-social Behaviour Team

01892 554 233.

### Dogs and Strays

To report or find out about a missing dog, or if you would like advice about stray/dangerous dogs or dog fouling please call the Client Services Team on 01892 554178 or 554246.

### Faulty Street Lights

If you want to report a faulty street light please call the dedicated freephone number 0800 212571 or e-mail [kent.highwayservices@kent.gov.uk](mailto:kent.highwayservices@kent.gov.uk)

### Fly Tipping

Please call the Client Services Team on 01892 554178 or 554246/581458.

### Graffiti Hotline

For incidents of graffiti that you come across around the borough, please report these on 01892 554159.

### Noise Problems

If you are experiencing ongoing noise from a neighbour please call the environmental protection team on 01892 554235 or e-mail [envprotection@tunbridgewells.gov.uk](mailto:envprotection@tunbridgewells.gov.uk)

### Potholes or Broken Pavements

Please call Kent Highway Services on 08458 247 800 or email [kent.highwayservices@kent.gov.uk](mailto:kent.highwayservices@kent.gov.uk)

## CHURCH TIMES

### ST. PETER'S CHURCH SERVICES

#### Upper Church

8am Holy Communion  
9.45am The Parish  
Eucharist  
and Junior Church  
10am Holy Communion  
(Wednesdays)

#### Old Church

11.30am Matins (except  
first Sunday, Holy  
Communion)  
Evening services as  
advertised on Church  
noticeboards

### CATHOLIC CHAPEL OF ST. ANSELM – PEMBURY

Sunday Mass 10.30am  
Holy Days – Vigil Mass  
7.30pm  
Confessions:  
Sunday 10.15am

Weekday Service:  
Wednesday – Mass 7pm

### PEMBURY BAPTIST CHURCH

We praise God and hear  
his word on Sunday at  
10am. Children's and  
young peoples' group  
meet as well. Evening  
services as advertised.

We have many activities  
during the week for  
mums, toddlers, young  
people and senior citizens.  
Ring the church office  
825590 for details.

---

## YOUR REPRESENTATIVES

### COUNTY COUNCIL

Kevin Lynes, 5 Downs Cottages, The Down, Lamberhurst, Kent TN3 8EX. Tel: 890922

### BOROUGH COUNCIL

Paul Barrington-King, 22 The Coppice, TN2 4EY. Tel: 825144

David Mills, 125 Ridgeway, TN2 4ET. Tel: 825577

Mike Thompson, 14 Gimble Way, TN2 4BX. Tel: 822711

### PARISH COUNCIL



Cllr David Coleman  
22 Ridgeway TN2 4ER  
Tel: 823402  
*Chairman of Parish Council*



Cllr Steve Morton  
2 The Coppice TN2 4EY  
Tel: 824938  
*Vice Chairman of Parish Council  
Chairman of Planning & Highways  
Working Group*



Cllr Jennifer Ayres  
21 High Street TN2 4PH  
Tel: 824922  
*Chairman, Finance, Audit &  
Personnel Working Group*



Cllr June Crowhurst,  
44 Elmhurst Avenue TN2 4DA  
Tel: 824873  
*Chairman, Amenities, Christmas  
Lights and Pembury in Bloom*



Cllr Keith Farley  
3 Beagles Wood Road  
TN2 4HX  
Tel: 823440



Cllr Alison Morton  
2 The Coppice TN2 4EY  
Tel: 824938  
*Chairman, Pembury Village News  
Editorial Working Group. Acting Chair,  
Public Relations Working Group*



Cllr Sally Osborn  
34 Canterbury Road  
TN2 4JT. Tel: 822726  
*Chairman, Allotments, Burials,  
Environment & Environmental  
Improvement Working Group*



Cllr Norman Starkey  
71 Henwood Green Road  
TN2 4LW  
Tel: 823227



Cllr Mike Thompson  
14 Gimble Way  
TN2 4BX  
Tel: 822711



**Clerk to the Pembury Parish  
Council**  
Barbara Russell, 6 The Grove  
TN2 4BU. Tel: 823193  
Email:  
clerk@pemburypc.kentparishes.gov.uk



**Deputy Clerk to the Pembury  
Parish Council**  
Richard Parsons, 6 The Grove  
TN2 4BU. Tel: 823193  
Email:  
deputy@pemburypc.kentparishes.gov.uk



# VILLAGE ORGANISATIONS

## AGE CONCERN

Mrs Sandra Springett. Tel.: 522591

## ALZHEIMERS DISEASE SOCIETY

Simon Rooksby, Pineview Day Hospital

Pembury Hospital. Tel: 823535, Ext 3515

## BLACK & WHITE MARCHING MILITAIRE

Tel: Louise 823097

## BOWLS CLUB

Len Birnie. Tel: 01892 681222

## CATHOLIC CHURCH

Deacon Bill Eason. Tel: 824133

## COMPAID TRUST

Computer Aid for Disabled People. Tel: 824060

Transport for Special Needs. Tel: 823488

## CONSERVATIVE PARTY

Terry Cload, 56 Herons Way. Tel: 823966

## CRICKET CLUB

Hon. Secretary: Andy Dawes, 17 Cornford Park, Pembury.

Tel: 822862

## FRIENDS OF PEMBURY HOSPITAL

c/o Pembury Hospital. Tel: 823535

## FRIENDS OF PEMBURY PARISH CHURCH

Chairman: Mrs S. Clarke, Little Stanton,

Romford Road. Tel: 823932

## GUIDES, BROWNIES AND RAINBOWS

Mrs M. Allan, 9 Henwood Green Road. Tel: 822373

## HEADWAY

Libby Slattery. Tel: 823120

## HOSPICE IN THE WEALD

Maidstone Road. Tel: 820500

## KENT COLLEGE

Headmistress: Ann Upton. Tel: 822006

## KENT COLLEGE PREP SCHOOL & NURSERY

Headmistress: Anne Lawson. Tel: 820204

## LABOUR PARTY

Dave & Sally Osborn, 34 Canterbury Rd. Tel: 822726

## LIBERAL DEMOCRATIC PARTY

David Mills. Tel: 825577

## LITTLE RASCALS (formerly 'Meet-a-Mum')

c/o PBC Office. Tel: 825590

## NATIONAL CHILDBIRTH TRUST

Co-ordinator: Helen Dunkerley. Tel: 822529

## NATIONAL FEDERATION OF THE BLIND, UK

Michael Coggles. Tel: 822705

## NEIGHBOURHOOD WATCH

Gill Pavely. Tel: 822605

## PEMBURY ATHLETIC (YOUTH) FOOTBALL CLUB

David Gow. Tel: 824119

## PEMBURY BAPTIST CHURCH

Rev. Wayne Alexander

Church Office. Tel: 825590

## PEMBURY BRIDGE CLUB

Geoff Plummer. Tel: 824652

## PEMBURY COMMUNITY WARDEN

Tom Younger. Tel: 07813 694138

## PEMBURY COMMUNITY WORKING PARTNERSHIP

Richard Parsons. Tel: 823193

## PEMBURY F.C. SATURDAY

Mick Waterman, 26 The Coppice. Tel. 824137

## PEMBURY F.C. SUNDAY

Phil Craxton, 34 Woodhill Park. Tel: 823928

## PEMBURY FOOTPATH WALKERS

N. & K. Franklin, 11 The Meadow. Tel: 823212

## PEMBURY GARDENERS

Ann Purton. Tel: 824223

## PEMBURY PHOENIX TWIRLERS

Dave or Chris Brett. Tel: 824233

## PEMBURY PLAYERS

Chairman: John Hawker. Tel: 824327

## PEMBURY PRE-SCHOOL NURSERY

Mrs C. Hughes. Tel: 668514

## PEMBURY SCHOOL

Headteacher – Mrs C. Thewlis. Tel: 822259

## PEMBURY SCHOOL ASSOCIATION

Rachel Castle. Tel: 822259

## PEMBURY SCHOOL HOUSE NURSERY

Teacher in charge: Rosemary Rich. Tel: 825580

## PEMBURY SEQUENCE DANCE CLUB

Secretary: Mrs Marion Warren. Tel: 547617

## PEMBURY SHORT MAT BOWLING CLUB

Arthur Storey. Tel: 822509

## PEMBURY SOCIETY

Ken Watts. Tel: 822770

## PEMBURY TENNIS CLUB

Mrs S. Smith, 2 Ridgeway. Tel: 822405

## PEMBURY UPPER AND OLD CHURCH

Rev. Matthew Jackson Tel: 824761

## PEMBURY VILLAGE MARKET

Karol Young. Tel: 823413

Julie Patten 824479

## PEMBURY (formerly Larkfield)

Principal: Mr Roger Gibson, Cornford Lane. Tel: 822168

## ROTARY CLUB OF SOUTHBOROUGH & PEMBURY

Secretary: Mike Raper. Tel: 01892 520171

## ROYAL NATIONAL LIFEBOAT INSTITUTION

Peter Chartres, 54 Woodhill Park. Tel: 823759

## SANDRA'S HOUSE

Pre-School Nursery, Mrs S. Toogood, Queens Folly,

64 Lower Green Road. Tel: 824252

## SCOUTS, CUBS AND BEAVERS

Mike Cartwright, 16 Cornford Park, Pembury.

Tel: 823235

## SCOUT & GUIDE HQ MANAGEMENT TEAM

Mike Cartwright, 16 Cornford Park, Pembury.

Tel: 823235 and Moira Allan, 9 Henwood Green Road.

Tel: 822373

## ST. PETER'S MOTHERS' UNION

Secretary: Mrs M. Adams. Tel: 822769

## ST. PETER'S PHOTOGRAPHIC CLUB

Events Secretary, Carol Wakeford. Tel: 822030

## TABLE TENNIS CLUB.

John Burleton. Tel: 823250

## TREE WARDEN.

Caroline Mazzey Tel: 822493

## TUNBRIDGE WELLS ACCESS GROUP

Gill Pavely Tel: 822605

## TUNBRIDGE WELLS & DISTRICT VICTIM SUPPORT

SCHEME. Tel: 513969

## VILLAGE HALL

Manager (bookings): Rachel Windus.

Tel: 822837

## WOMEN'S INSTITUTES

Afternoon: Mrs Edna Morris. Tel: 822267

Evening: Mrs Elizabeth Bellchamber. Tel. 824969

## WRVS LUNCH CLUB

Contact: Mrs Amanda Everett. Tel: 823280

## YMCA

Simon Stanley. Tel: 534444



**Kent College Preparatory School, Pembury**

An independent school for girls aged 3-11

## Happiness + Confidence = Success



We believe that a happy, confident child is a successful one and our girls love school. High academic standards, excellent SATs results and preparation for grammar and independent senior schools (including our own) are at the heart of what we do, but we never forget that there is more to childhood and learning than examinations. If you would like to know more about our approach to developing happy, confident and successful pupils, please contact Mrs Shephard for a prospectus and DVD or visit our website where you can see a daily update of what our Nursery class are doing.

"A happy and secure learning environment ... teaching is very good overall and often excellent enabling pupils to achieve very well ... excellent wide-ranging programme of extra-curricular activities ... very high levels of pastoral care."

Independent Schools Inspectorate Report, 2004

Kent College Preparatory School is an independent school for girls aged 3-11.

Nursery class from age 3 with flexible attendance.

Old Church Road, Pembury, Tunbridge Wells TN2 4AX

Tel: 01892 820204 [www.kent-college.co.uk](http://www.kent-college.co.uk)