

An aerial photograph of Pembury Village and its surrounding countryside. The image shows a mix of green fields, some with hedges, and clusters of buildings. A road or railway line runs through the middle of the village. The overall scene is a typical English village landscape.

PEMBURY VILLAGE NEWS

ISSUE 126

SUMMER 2006

**PEMBURY IN BLOOM
ENTRY FORM
WITH THIS
EDITION**

CONTENTS

'Any Questions?' From Pembury	3 & 5	Tricksters	25
Pembury Gets Its Own Citizens		Mid Kent Water	26
Advice Bureau Service!	5	Pembury Outdoor Bowls Club	26
Annual Parish Meeting – 20 March 2006	7	Pembury School House Nursery	26
Spring Has Sprung And Pembury		Snippets	27 & 28
Is Set To Bloom	9	(Frederick) Dennis Barden 1932-2006	29
Pembury School Association	9	Hospice In The Weald	31
Guide and Scout Open Day	11	Your County Councillor Reports . . .	31
The Noise 2006	11	Pembury People – Joan Wales	33 & 35
Pembury Community Partnership –		The WI in Pembury	35
One Year On	13	University Of The Third Age	37
The Pembury Society Spring Meeting	15	Jane's Garden Views	38
The Sahara Trek –		For Your Diary	39
13-21 March 2006	16 & 17	Crime in Pembury	40
Pembury Beavers Start Up!	17	Pembury Players	41
Your Council Reports . . .	18	Church Times	41
Hildy Swinden	19 & 20	Your Representatives	42
PBK's Big Bike Ride	22 & 23	Village Organisations	43
We're Recruiting	25		

Cover photograph by Rod Salmon

Editorial Working Group:

Alison Morton (Editor), Jennifer Ayres, Paul Barrington-King,
Rosie Bass, Janet Ditchett, Leslie Gregory and Ann Owen

Please note: The Editor's decision is final on whether or not to publish any item submitted. The Editor reserves the right to edit (that is to cut, précis, alter, correct grammar and spelling) any item published.

PEMBURY VILLAGE NEWS

Editor: Mrs Alison Morton
2 The Coppice, Pembury TN2 4EY
Tel: 824938 Fax: 825134
Distribution enquiries: Parish Clerk 823193
Email: pvn@pembury.org
Website: www.pembury.org

Pembury Village News is published four times a year by the Parish Council, but the views expressed in the magazine do not necessarily represent official council opinion or policy.

Typeset and printed by
TMH, Tunbridge Wells.

'ANY QUESTIONS?' FROM PEMBURY

CASH FOR Peerages, Iran's threat to world peace, a break down in respect, sectarian schools and the hosepipe ban were among a wide range of contentious issues discussed when long-running BBC Radio 4 programme 'Any Questions?' came to Pembury on Friday 14 April.

The panel included Tony Benn, the longest-standing MP in the Labour party's history, former Conservative minister Steve Norris, Dr Alexandra Ashbourne, defence and foreign affairs analyst and Rod Liddle, trenchant free-speaking Associate Editor of *The Spectator* and *Sunday Times* columnist.

Chaired by Eddie Mair, the anchorman of Radio 4's PM, the daily news and current affairs programme, and produced with great professionalism and tact by Lisa Jenkinson, the live broadcast evening was enjoyed hugely by the good-humoured audience of over 200.

Replying to Elizabeth Wycombe's question on whether the panel agreed with the US that Iran was an active threat to world peace, the panel concluded that George Bush was in fact a much greater enemy to world peace. Steve Norris said: *"I suppose my worry is I'm more concerned about the man who believes God is on his side in the White House than I am about the man who thinks God is on his side in Tehran."* Tony Benn added: *"I think the American people, with a stroke of luck, will deal with him their way in the mid-term elections and in future elections."*

David Gow, referring to Tony Benn, who had renounced his title of Viscount Stansgate in 1963 asked why the panel felt anybody would wish to buy a peerage?

Rod Liddle thought 'snobbery' was the only reason and Alex Ashbourne was 'irritated' by the fact so many recent peerages were made for so-called services to education when it was really about opening the cheque book.

Pauline Hawker continued with a seemingly lighter question, asking if the panel would 'snitch' on a neighbour for using a hosepipe? Alex Ashbourne expanded the question to include wider environmental issues and believed the question should be what are we going to do about this water shortage?

In what Steve Norris called a 'shameless piece of localism,' Rod Liddle said: *"Just wait until John Prescott's plan to pave Kent and Essex and most of Surrey and build 500,000 more homes there, just wait until that plan has been put into operation, then we will start seeing a few hosepipe bans."*



Any Questions panellists, left to right: Rod Liddle, Tony Benn, Steve Norris, Dr Alex Ashbourne

continued on page 5

COPY FOR NEXT ISSUE

*Any news items or articles for possible inclusion in the next issue of this magazine must be forwarded to the Editor before
1 August 2006.*

If you use a computer to type your article, it would be extremely helpful if you could send it (and photos) in by e-mail to pvn@pembury.org



Member of the National Association of Estate Agents



**Discuss your property requirements with our qualified friendly staff in
comfortable relaxed surroundings**

★ ★ OPEN 6 DAYS A WEEK – MONDAY TO SATURDAY ★ ★

16 High Street, Pembury TN2 4NY

Tel: 01892 822880 Fax: 01892 825250 email: pembury@denisebarnes.co.uk

Also at:	Tunbridge Wells: 01892 527733	Sevenoaks: 01732 450866
	Prestige & Country Homes: 01892 618181	Brenchley: 01892 724000
	Residential Lettings: 01732 500400	Tonbridge: 01732 771616

**Accurate?
Reliable?
To deadline?**



We are!

- ★ Audio typing & general wordprocessing
- ★ Reports, book drafts, mailshots
- ★ PowerPoint presentations
- ★ Spreadsheet and database management
- ★ Quality assured European translations
- ★ Friendly, reliable and professional service



**Official hosts of the
Pembury Village
News website
www.pembury.org**

**PBSS Translations
Pembury Business & Secretarial Services
Tel: 01892 824833
www.pbss-uk.com partners@pbss-uk.com**

‘ANY QUESTIONS?’ FROM PEMBURY *continued*

On what was the nature of truth, a seasonal Easter reference to Pontius Pilate’s question, a debate about facts, interpretation, truth, doubt and the exercise of conscience ensued. Rod Liddle refreshingly said *‘He didn’t have a monkey’s [idea]’* and Steve Norris added that you should speak the truth however inconvenient. The panel concluded it was an impossible question to answer!

Whether Mrs Thatcher was the cause of the breakdown of respect in Britain, from Christopher Hall, split the panel to some extent on ideological lines, but Tony Benn generously conceded that Mrs Thatcher *‘always told you what she was going to do and then did it. She was one politician who meant what she said’*. He thought her actions often had an unpleasant outcome, though. Rod Liddle thought that other factors such as the 1960s educational reforms and the breakdown in school discipline were more important factors. Steve Norris praised Mrs Thatcher for invigorating economic and social life considerably by emphasising meritocracy and individual effort, but Tony Benn said she had promoted consumerism at the expense of people. All agreed that respect for institutions such as politics, professionals, education and churches had declined.



A light hearted question about political party colours from Robert Wilks gave the panel considerable scope to use expression like *‘muddy waters’*, *‘sludgy brown’*, *‘brownny-purple’* as a simile for the clone-like nature of the current political parties. After taking a swipe at the Liberal Democrats with *‘a streak of yellow’* Steve Norris and Tony Benn loyally stood up for their own current party colours of blue and red respectively.

A unanimous ‘yes’ in answer to David Burgess’s question whether sectarian schools tended to divide communities ended the live broadcast at 9pm. As the audience members streamed out of the hall full of the buzzing atmosphere they had enjoyed from the start many, if not all, enthusiastically thanked representatives of Pembury Parish Council who had worked hard to organise the evening.

Alison Morton

PEMBURY GETS ITS OWN CITIZENS ADVICE BUREAU SERVICE!

IT HAS LONG been felt by some residents that Pembury should have its own advice service. This was highlighted back in July 2003 when Pembury Baptist Church undertook a community survey of 11.5% of village householders, and determined that an advice centre (perhaps a weekly visit by the Citizens Advice Bureau) was seen as useful by 20% of villagers.



The Tunbridge Wells & District Citizens Advice Bureau (CAB) has now set up an outreach project, funded by Kent County Council, in Pembury. Gail Beeching has been appointed as the Pembury Outreach Adviser and she will be available at Pembury Library on Wednesday mornings between 9.30am and 12.30pm. You can either drop in, or telephone for an appointment (only one at present, available at 9.30am) on 822278.

The Citizens Advice Bureau is an independent charity and provides free, confidential and impartial advice to everybody, regardless of race, gender, sexuality or disability. Advice and information are available on a wide range of subjects, including welfare benefits, consumer rights, debt, credit, housing and homelessness, work, family and relationship problems, legal matters, local services, health, disability and much more. If you have an issue that you wish to discuss or obtain further information on, please feel free to drop into the library on any Wednesday morning, and remember that anything discussed is completely confidential.

David Salter

Gas & Plumbing Services

Central Heating Installations & Upgrades

Boiler & Cylinder Changes

Breakdowns, Connections & Servicing of all gas appliances

15 Years experience with British Gas

Corgi Registered



EMERGENCY CALL OUTS – MOBILE 07733 107333 – HOME 01892 824481

Brian V Toogood

**CARPETS & VINYLs SUPPLIED & FITTED
CARPETS & UPHOLSTERY CLEANED**



Stain protection treatment for carpets and upholstery

FOR PERSONAL & PROFESSIONAL SERVICE TEL: PEMBURY 824252



OVER 28 YEARS' EXPERIENCE.
EST 1977

Any make of carpet available.
Pattern books brought to your home.
Carpet and upholstery cleaning, also rugs
and orientals.
Carpets adapted and repaired.

JULIE ROBINSON

IHBC, BABTAC

Professional Beauty Therapist



FULL RANGE OF PROFESSIONAL BEAUTY TREATMENTS AVAILABLE
WITHIN COMFORTABLE AND PRIVATE SURROUNDINGS



**SPECIALISED DERMALOGICA FACIALS * MAVALA MANICURES/PEDICURES
WAXING * TOP-TO-TOE TREATMENTS**

Please telephone for a list of treatment details. PEMBURY (01892) 824059

KEITH RABBITT_{AMIMI}

VAUXHALL SPECIALIST

31 years' experience at Renny's of Tonbridge

Most makes serviced and repaired

**Why go to a franchised dealership when you can have
a personalised service on a one-to-one.**

**For quality, reliability and a friendly service call Keith on
01892 723362 or 07790 436109**



M.O.T. TESTS

ANNUAL PARISH MEETING – 20 MARCH 2006

REPORT, REPORT, REPORT! This, and keeping a diary of incidents however small, are two of the ways residents can tackle anti-social behaviour in Pembury. An audience of around 40 residents including Parish, Borough and County Councillors listened with great attention to Terry Hughes of the Tunbridge Wells Borough Council Anti-Social Behaviour Unit and Sgt Simon Terry, Kent Police, as they spoke at the Annual Parish Meeting in March.

The Parish Council, then Borough and County Councillors reported first on what had been happening in the past year. Parish work included: on-going planning applications, new planning rules being implemented, the usual Parish Council events – the musical picnic, the fete and fireworks, the Pembury Village News and its website (one of the ‘oldest’ in Kent), the extensive work planning the refurbishment of the Lower Green Recreation Ground, Pembury in Bloom, Speedwatch, pressure to improve the roads and their safety.

Many issues affecting Pembury were discussed; a campaign to improve bus services, lighting in the village, an increase in youth club nights, but most of all the concern residents have about anti-social behaviour. This was why the Parish Council decided to invite the speakers along to let residents know what steps they had taken and to discuss any specific questions with residents.

Terry Hughes was employed by Tunbridge Wells Borough Council as Anti-Social Behaviour co-ordinator and through the Community Safety Partnership was keen to tackle the causes and effects of such behaviour, not only to punish. He regularly visits Pembury as part of his work. He outlined the process which worked in consultation with various partners: if the housing association, school or parents signal a problem, his unit will liaise with the police, the education authority and social services. A warning letter will be sent and an acceptable behaviour agreement will be agreed with the offender. If this does not work, an ASBO (Anti-Social Behaviour Order) will be issued and the offender monitored closely. Terry considered that this process was tougher than it at first looked and had had measurable success. He urged residents to contact him with their concerns.



Sgt Simon Terry firstly praised Pembury as a low crime area, despite the recent irritating incidents and the major trouble at the end of 2004.

His team offered traditional policing services (reachable 24 hours per day in Tunbridge Wells) but also worked with social, education and housing organisations. Pembury was considered a good community. Residents countered this with reports of constant low level but unacceptable behaviour, particularly at weekends: drunkenness, fighting and scuffling, loud shouting until the early hours. They did not report these incidents, each very small, but with a cumulative drip, drip effect.

Both Terry and Simon urged residents to note everything and then keep reporting them and insist on an incident number (for insurance). Police could not commit major resources to an area unless they had information and statistics to show there was a need. Residents were reminded that cards showing appropriate contact numbers had been distributed in the Winter edition of the Pembury Village News in December 2005.



P.L.H. DECORATING

Interior - Exterior
Painting & Decorating

Pembury (01892) 825772

Mobile 07941 068717

E-mail: plh.decor@virgin.net

PEMBURY DENTAL SURGERY



Nelis du Plessis B.Ch.D. (Pret)

67 Hastings Road, Pembury, Tunbridge Wells, Kent TN2 4JS

Tel: (01892) 823044

Committed to Quality Dentistry

Steffan Keily

FOR ALL YOUR FENCING REQUIREMENTS



All types of fencing supplied and fitted
Close board, panels, palisade, post & rail, gates

FREE ESTIMATES FULLY INSURED

HOME: (PEMBURY) 01892-824048 MOBILE: 07941138060

STURGEON'S

ROAD, DRIVE & CIVIL ENGINEERS

COAL MERCHANTS

PEMBURY 822221/2/3

SPRING HAS SPRUNG AND PEMBURY IS SET TO BLOOM

NOW THAT spring has finally arrived and the spring flowers are blooming, Notcutts garden centre in partnership with Pembury Parish Council are launching this year's Pembury In Bloom competition. To help encourage gardeners to forget their winter blues four-year-old Roxanne Windus from Pembury went along to Notcutts to lend a photogenic hand to the launch with the help of other young blooms.



answers. As we launch the competition we are reminding people that they can garden without hosepipes by using water butts, water retaining gel in hanging baskets, grey water from baths and showers, drought resistant plants and many other water conservation ideas. For advice come and see us."

There are five categories in this year's competition:

- Notcutts Best Front Garden
- Best Residential Hanging Basket/Container
- Best Container planted and maintained by a child or group of children
- Notcutts Rose Bowl for the most attractive commercial frontage
- Notcutts Shield for the Best Allotment

"We decided to blow away the winter cobwebs and invite Roxanne to help us launch this year's competition," said garden centre manager, Aston Bull. "We thought there was no better way of launching the competition than having lots of blooms in the garden centre."

"This year's competition poses even more challenges to local gardeners," says Aston. "Everyone involved with In Bloom is aware of the water restrictions that may be in place over the summer months but we gardeners should not be put off by such restrictions. Gardeners are naturally creative people and there are plenty of

The closing date for all categories is Monday 10 July. Judging takes place shortly afterwards and the winners' names will be announced at a special presentation tea to be held at Notcutts in August. Entry forms will be delivered with the parish magazine or are available from Notcutts Garden Centre, Pembury and the Parish Council.

PEMBURY SCHOOL ASSOCIATION

PICNIC IN THE PARK

Saturday 15 July 2006 – 4pm to 8pm

(Well, not quite in the park but in the School grounds.)

This year rather than the usual Summer Fete we are going to be holding a day of fun for all the family with lots of games and entertainment as well as some of the familiar stalls. You can bring along your own picnic or, alternatively, there will be a barbeque and refreshments.

Tickets will be on sale at a cost of £2 per adult and £1 for children (under 2's free) and will be available from PSA members.

Further information will be available nearer the time or contact the School Office.





Peter Willard Conservatory Specialist

Your Local Supplier of Top Quality

UPVC Conservatories. Any size and

many different styles.

Just call *NOW* for a Free Estimate

...A Complement to Your Home

Telephone no. 01892 824736 Mobile no. 07950 120341

COMTECS LTD

Providing IT Support services to Local Business

Comtecs Ltd can provide you with: -

- IT & Network Support from £10 per month
- Hardware and Software procurement
- Anti Virus Cleaning and Prevention from £5 per month
- Web Development and Design

Call for a free consultation

www.comtecs.co.uk - 01892 514 636

GUIDE AND SCOUT OPEN DAY 29 APRIL 2006

OVER THE last few months the Guides and Scouts have been selling raffle tickets as one means of raising the £15,000 needed to re-fence the headquarters building. At the end of February we had enough money in grants to proceed with completing three sides of the grounds, but that meant the final side and the gate were beyond our reach.

The raffle made about £500 which will help towards the final side. A great day was



Girlguiding



had by all the units who were present in the building showing off the work they do and the fun they have.

We currently have twelve units using the building which consists of two halls and grounds for outdoor activities.

About 200 youngsters from the village use the building each week during school term time and we should like to open the facility for pack holidays during school holidays. This means further updating the building to comply with all the regulations now in force.

Many thanks to all who came on Saturday and I hope you all enjoyed the day. A big thank you must go to County Councillor Kevin Lynes who drew the raffle and was very impressed by all he saw.

Janet Ditchett, Secretary

THE NOISE 2006

YOU MAY remember last September; over 100 people from Pembury Baptist Church took part in a village clean up weekend called The Noise!

We helped over 20 people from Pembury in their homes by decorating, gardening, housework, putting up sheds and general DIY. We also had teams litter picking, removing graffiti from bus shelters with our County Councillor Kevin Lynes, creating a nature reserve at Pembury School and washing cars.

Due to the success of this event last year we are holding another Noise Weekend this year on 9 and 10 September. If you know of anyone who would like any kind of practical help then please do put them in touch with me and we can make sure the jobs get done as we would like to help as many people as possible! If you would like to take part in this weekend by taking part in a team then please do contact me as well.

Jemma Alexander 825590



PEMBURY VILLAGE HALL

AVAILABLE FOR HIRE

**Facilities include Main Hall,
Meeting Room, Stage,
Kitchen, Changing Rooms
and Services.**

**Ideal for Club Meetings,
Weddings, Anniversaries,
Corporate Functions, Shows,
Dances, Musical Events, etc.**

**Contact Bookings Manager –
Rachel Windus on 822837**



G-Tech Computers

Home and Home Office PC
Support

Home Visits or Free Collection & Delivery
No Fix - No Fee & No Call out Charge
Upgrades To Your Existing PC
New PC System Sales
Servicing & Preventative Maintenance
Broadband & Wireless Network Installation
Virus Detection, Removal & Prevention
Full Support Services For The Home & Home
Office User

Pembury - 01892 823994

Mobile - 07929 903126

E Mail Address

Gtechcomputers@tiscali.co.uk



Memorials, Restoration and Domestic Stonework

232 The Ridge
Hastings
East Sussex TN34 2AE

Tel: 01424 421 099

Fax: 01424 722 237

www.burslem.co.uk

**New Memorials, Cleaning,
Memorial Renovation and
Additional Inscriptions.**

Brochures available

WALROND FULLER

CHARTERED BUILDING

SURVEYORS AND

PROJECT MANAGERS

01892 709600

**STRUCTURAL SURVEYS
ADVICE ON LISTED AND
PERIOD PROPERTIES**

PEMBURY COMMUNITY PARTNERSHIP – ONE YEAR ON

Working for an improved quality of life for all residents in Pembury

LAST YEAR we reported the formation of an independent group called Pembury Community Partnership (PCP) to share information and resources between various local organisations, groups, authorities, churches and businesses in order to make a positive difference to the lives of the villagers in Pembury. So, one year on, how are we doing?

Volunteers from the youth organisations, Pembury School, Parish Council, Tunbridge Wells Borough and Kent County Councils, Kent Police, all the churches, High Weald HA, local businesses, Neighbourhood Watch and the Community Warden now regularly meet to pool information and jointly progress plans to address the key issues facing our community identified as youth, public safety, traffic, environment, volunteers, business and community action.

At the last meeting (March 2006) there was much progress to report including:

- the three churches are now running a Community Larder to provide emergency 'basics' to people in real need
- a community debate on anti social behaviour at the Annual Parish meeting had shared information and underlined the need for everyone to tell the Police and Community Warden of anti social problems
- the police, Community Warden and Community Safety Officer had followed up issues that had been raised by residents and at least one positive outcome had been achieved
- a 'Tricksters' show had recently been staged by Tunbridge Wells Borough Council and the Community Warden to help the elderly prevent doorstep crime in the area
- a new satellite Citizens Advice Bureau service was starting in the Library (once a week starting 3 May 2006) due to six months' Kent County Council funding
- forthcoming public consultation by the Parish Council on five alternative proposals for the

new children's playground in the Recreation Ground

- fundraising events for recreation improvements by Paul and Dee Barrington-King
- St Peters were arranging a trial trip open to all older persons to take a 'Blossom Tour' and have tea on Ashdown Forest
- a 'Speedwatch' scheme, operated by volunteers assisted by the Police and Parish Council, is now operating
- the programme of village events, organised by the Parish Council, would again include events, probably including the musical picnic and fireworks,
- Pembury Baptist had started a good neighbours scheme called Frontline where any practical needs (for example, gardening, decorating or shopping) could be met for those who struggled to do these things for themselves; this was the latest of their 'Community Action' plans, following up services such as the Lunch Club.
- discussions between Popenbury and Compaud have produced positive temporary help for Compaud's accommodation crisis
- a Pembury Contact List for reporting of crime affecting villagers and prepared by members of the Partnership had been published in the Pembury Village News
- as 'The Mix', the weekly event for young people provided by KCC Youth Services and hosted by the Baptist Church had been so successful, a second night each week would shortly be funded by Kent County Council.

Many other issues were discussed and ideas put forward to progress the issues Pembury Community Partnership hope to improve or encourage in the village during the months to come. One of the biggest difficulties is finding people willing to volunteer for the various activities and we would encourage anyone who has a few hours a week to look at the Pembury website (www.pembury.org) under the Volunteers section to see what they could do to help.

AMBERSIDE DANCE STUDIO

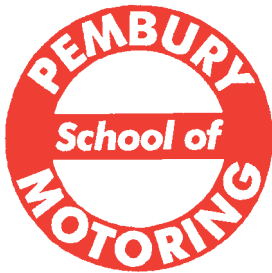
PEMBURY VILLAGE HALL

PRE-SCHOOL CREATIVE MOVEMENT CLASSES FOR BOYS AND GIRLS
BALLET, MODERN AND TAP DANCING CLASSES. ISTD SYLLABI
AND EXAMINATIONS

ADULT BALLET STRETCH CLASS

SATURDAY MORNING CLASSES FOR YEAR ONE CHILDREN

Please Contact: Victoria Mustill-King – 01892 724777



Steven Toogood

former BSM Instructor. High Pass Rate

Learn to drive with the BEST

- Theory and Hazard Perception
 - Beginners Refreshers
- Motorway, Night Driving
- Patient, Friendly and Reliable
- New Ford Focus Zetec, Climate
- Nervous Drivers Welcome

Gift Vouchers Available



01892 824 252 0771 501 877
Queen's Folly, 64 Lower Green Road, Pembury

Burtons

Pembury's Solicitors

- ★ Full Range of Legal Services
- ★ Prompt Efficient Friendly Service

The Tyled House
23a High Street
Pembury, Kent TN2 4PH

Tel (01892) 824577

THE PEMBURY SOCIETY SPRING MEETING

HARRY COLLINS – JEWELLER TO THE QUEEN

THERE WAS an air of anticipation in the Village Hall on Thursday 6 April as about 60 members of the Pembury Society eagerly awaited the speaker Mr Harry Collins. His shop in the High Street in Tunbridge Wells was known to most people and many had gazed at the beautiful antique jewellery in the windows.

Harry began by saying that he has been a jeweller for 36 years and started as a young man in a shop in Bond Street in London. At first he had been quite reluctant to go for the job as he was sure he would lose face with his friends, but he was persuaded by his mother to give it a try.

The shop in Bond Street received jewellery from all over the world and from the start Harry knew that was what he wanted to do. He soon fell in love with the beautiful antique jewellery and the exquisite craftsmanship that he saw.

As time went by he knew that he had to open his own shop and when a small shop in the High Street in Tunbridge Wells became vacant he bought it and to begin with filled the windows with jewellery that he persuaded his friends in the trade to lend him. From those small beginnings it has grown into the beautiful shop we know today. Over time the shop has enlarged with a number of top class craftsmen working for him. Harry admitted that he hadn't the powers of concentration needed to be a craftsman as he liked talking too much!! He was much better at design. Antique jewellery has always fascinated him and his favourite period is Edwardian through to Art Deco. During that time platinum started to be used in jewellery and has remained his favourite.

Six years ago he was invited to Buckingham Palace. He thought it was a joke as his brother was a well known practical joker but he went along and much to his surprise found that his name was on the list at the gate. He had an audience with Her Majesty The Queen and was asked to look at an emerald tiara, the Vladimir

tiara. His hands shook so much that the Queen did suggest that if he held the tiara still she could show him the work that needed doing!!

Harry has his own workshop in the Palace where he looks after the Queen's collections and exhibitions in the Queen's Gallery. For the late Queen Mother's 100th Birthday the Queen commissioned Harry to make the now famous Rose Brooch which was much in evidence when

Rolf Harris was painting the Queen's portrait recently. Five years ago the shop in Tunbridge Wells, G.Collins and Son was granted a Royal Warrant.

Harry then went on to talk more generally about jewellery and particularly about the cutting and setting of diamonds. He described the finding of the now famous Cullinan diamond in South Africa in 1910, the largest diamond ever found at over 3,000 carats. It was presented to King Edward VII on his

birthday. Asscher Brothers of Amsterdam studied it for three months before finally splitting it in two and then cutting it into nine major stones.

The largest at 300 carats is in the Queen's Sceptre, the second is in the crown and the third and fourth are on display in the Queen's Gallery. Starting in July there will be a new exhibition at the Queen's Gallery with many jewels on display for the first time which Harry urged everyone to try and see.

There followed a question and answer session with many questions, some of which Harry was unable to answer if they related to the Royal Family but he was able to talk about the "large" Security Guards ever present outside his shop; they are well trained and some have a military background.

It was agreed by everyone that it had been an excellent talk and Harry was warmly thanked for giving up his time for The Pembury Society.

Jan Cook, Secretary, The Pembury Society



*Harry Collins with Pembury Society
Chairman Steve Morton*

THE SAHARA TREK 13 MARCH - 21 MARCH 2006

A MOTLEY CREW congregated at Terminal 2 Heathrow, to be greeted by Sally our group Event Co-ordinator. Introductions were made and we all checked in. Gradually we migrated to the bar for a few beers and further introductions and the first photos. We departed for Casablanca at 17:10 to arrive at our destination at 22:15. We then took an onward flight to Quarzazate arriving at 23:50 where we met Rolfe our Australian trek leader. We piled into buses for a short trip to the hotel and bed.

We all arose very early for a five-hour drive into the Western Sahara to a place called M'Hamid. On route we stopped off in Zagora to buy a shash (a long head scarf) much needed in the days ahead against the desert winds. We tried in vain to haggle with the shop owner but he would not budge. Back into the buses we piled to eventually arrive at a windswept tent and camels waiting for us to begin our trek. After a lunch sitting with our backs to the wind we set off with our lead Berber Hussain at the helm. After an hour we stopped for a brief break under a tree and shade at the edge of some dunes. We set off again and had our first experience of walking over sand dunes. This is not easy climbing up and down over dunes of various gradients. Hussain our Berber leader would always take us over the dune at its lowest point but sometimes this involved considerable effort. Eventually two tops of white tents appeared in the distance. It was a welcome sight and we stumbled into camp. This had been our first real experience of walking the Sahara Desert and the reality of what we had let ourselves in for was sinking in.

The next morning we were up by 6am, checking our kit, eating a good breakfast and dismantling the tents, to walk over more dunes. My calves were getting stronger by the minute! After four hours trekking we stopped for lunch under the shade of a Tamarisk tree. I must say,

our Berbers prepared excellent lunches that were both plentiful and of a good nutritional value. While at rest out of the main heat of day the desert wind had picked up and we began to see how harsh an environment this is. We also covered up with our 'shash' firmly wrapped around both our head and face. Off we went into the wind; it bites and if sand gets into your mouth it makes you very dry. The day was spent walking across Erg Lihoudi for some six hours.

The next morning we set off across open flat terrain in an area called Bougarnne. This is a very different experience as the ground is firm and stony with tough grass poking through



Brian of Arabia!

in places. I for one really enjoyed walking on the flat plains as I could keep up with Hussain and carefully watch out for his hand signals indicating right or left or stick for straight ahead. The afternoon walking was much harder than the morning as again we encountered dunes and softer ground. We camped below some very large dunes and prior to sunset climbed up a large dune to watch the sunset. By now many of us had blisters caused mainly by the heat and sand getting in between our toes. The doctor

was first class in treating everybody so that we were able to keep going. Camp at night was fun as we would all sit around in a tent and bond as a team over dinner and the occasional glass of wine.

After another early start we set off across an area called hamada or flat stony desert. We made a few short climbs across dry dusty plains. Again lunch was taken under the only tree for miles resting again from the hottest part of the day. In the afternoon we set off towards Chgaga by far the largest dune of the region. In the morning we were to climb the dune standing some 380 meters in the distance. Many of us must have had a feeling of trepidation regarding this dune but it had to be done.

In the morning we set off for Chgaga passing a Berber camp on the way. After crossing the lower green reaches with sheep grazing we started the climb up the enormous dune. Gary one of our younger trekkers stayed with me all the way up. It was like climbing a mountain with sand blowing off its crest. I can tell you when you reached the top the views were fantastic. We all had our group photo taken at the top with the Union Jack flying. Some of the guys raced down the other side of the dune, others took the easier route down. Much easier than going up. After the descent we regrouped with the camels and spent the rest of the day walking amongst the dunes and passing the occasional nomadic encampment. We camped just below the Jebel Bani.

The last walking day was spent on the flat salt pans. At first we walked across several kilometres of hamada with sand dunes lying to the south. We then got onto a spectacularly flat

open saltpan. As the sun creates a mirage shimmering in the distance you just keep walking. The Berbers erected a tent for cover at lunchtime and the temperature reached 48.5 degrees. After lunch we only had another 8 kilometres to go and we had covered 100 km. At the end our faithful Berbers were at the

finishing line playing their drums. I must admit it brought a tear to my eye.

In the morning I walked another 15 kilometres with a few hardened individuals setting off at 5am and being picked up at seven-thirty for the start of the journey back to Quarzazate.

This was a brilliant experience during which I met some first class people all of whom had a reason to accept the Challenge of the Sahara. At the last count our group had raised £35,000 for various charities. I am sure this figure will increase. I hope to do more in the future.

Brian John Horgan, 822412/077 62 82 92 82



Keep on trekking!

PEMBURY BEAVERS START UP!

WE STARTED the colony on the 9 January with 13 boys and these were all invested in February; the local newspaper wrote an article for us, and all the parents came. We are slowly building up our activities which included an outdoor Easter hunt on the 27 April. We already have a thriving parent rota and all the parents are very keen to come along and help. Speights Butchers have donated £180 to the colony for us to buy a parachute, and we will also buy some sports equipment with the money. We plan to have a sleepover in October!!

With the opening of the Beaver colony, Sturgeon Cub pack has reopened on Monday nights, working closely with the existing Penn Cub pack. They have both been busy with exciting pack evenings and will be on camp over the late May bank holiday weekend. The Scout troop has also been busy with evening activities both in the hall and outside in the woods, also taking part in the District Camp at Adamswell. All sections of the Scout Group are benefiting with help of new adult leaders and helpers, but we are open to more helpers to join our thriving and expanding group. We have more ambitious plans which we cannot do until we have a few more helpers. If you want to help the group, then please contact Mike Cartwright 823235. During May, the Scout Group was short listed for the *Courier* Heart of the Community Award.

Nick Harrison



YOUR COUNCIL REPORTS . . .

IT HAS BEEN a busy few months for the Parish Council.

Recreation Ground Improvements – following five different schemes being submitted by prospective contractors for the new relocated children's playground, the Parish Council organised a consultation display in mid May to seek preferences from potential users. This consultation was specifically targeted at individuals with young children through the school, playgroups, library, churches and children's clubs. A steady stream of young experts and parents saw the possible schemes at Pembury Baptist Church on 17, 18 and 20 May; 140 voted for one or other scheme, the most popular gaining 63 votes. The Council will consider the final choice at a special meeting on Monday 26 June and hopes to start the actual construction work as quickly as possible. While this will be mainly funded by the Parish Council, we are very grateful for the sponsorship events being held by a group of parents, led by Dee Barrington-King, for specific equipment and for the sponsored bike ride by Paul Barrington-King (see page 22).

Wiesbaden to Tunbridge Wells Bike Ride – The 'Big Bike Ride' is being undertaken in June by Paul Barrington-King, supported by the Town Twinning Association, to mark the 400th Anniversary of Tunbridge Wells. This event will specifically be raising money for the second phase of the improvement plan, a new young people's area in the Recreation Ground. Please make sure you sponsor Paul and if you still need a form, telephone him on 825144 (see page 22).

Speedwatch – is now often to be seen operating in Pembury, with the volunteers using the monitoring and warning equipment (including the mobile 'speed flasher') to good effect. While a few motorists have been unhelpful, most are grateful to discover just how easy it is to exceed the village speed limits and then drive more carefully. The team is also building up a good database on speed patterns in certain roads which will be of assistance to the Highway Authority and Police.

BBC Radio 'Any Questions?' – was hosted by the Parish Council and broadcast live from Pembury in April. This received wide media coverage and was a great evening out for all the

residents who packed the Village Hall (see pages 3 and 4).

Bo Peep Sign – you will have seen that the new sign is now up in Hastings Road, provided jointly by the Pembury Society and Parish Council. This admirably replaces the old weather damaged sign which had to be taken down some time ago.

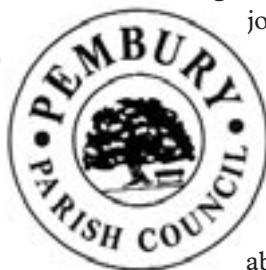
Anti Social Behaviour – there was a good debate at the Annual Parish Meeting in March and residents were able to listen to the Police and the Borough Council's Community Safety Manager on what was being done to address this continuing problem. The need for the whole community to be involved and for residents to report every incident was stressed (for non-emergencies 01622 650065 – or if in doubt, contact Tom Younger, Pembury Community Warden, 07813 694138).

Parking Problems – the Parish Council has previously discussed a number of parking problem areas with Kent County Council, including parts of Lower Green Road and Hastings Road. The Tunbridge Wells Joint Transportation Board has now agreed these be included in their future action programme and schemes are being designed. Hopefully, some are planned for later this year.

Planning – when in April the Threshers (previously Unwins) shop front in the High Street was suddenly repainted bright red, without apparent planning permission, the Parish Council immediately contacted the TWBC Planning Department along with our Borough Councillor colleagues. It seemed unbelievable to many residents that such a visual change could happen in a Conservation Area without warning or the planners being involved. Unfortunately 'the rules' are nothing like as simple as that, the repainting of commercial premises have to be assessed as 'advertisements' and the Borough Council planners are still in discussion with Threshers as this goes to press.

Pembury Musical Picnic – finally, this great annual opportunity to relax in convivial surroundings and company will be held on the Village Green, at 6pm on 10 June. Hope you and your family will be there.

David Coleman



HILDY SWINDEN

ASK ANY of us who have lived in Pembury for some time what would be our abiding memory of Hildy and you would find not only those taught by her and those with their own personal memory, you would discover those who will never forget seeing her plod round the houses as she delivered Lib Dem leaflets or encouraged householders to vote for her, or engaged in discussion or debate over the issues of the day. The other universal memory would obviously have to be Hildy in her car – usually a Mini; Hildy was to be found at the

head of many a queue of traffic through the village and on the front seat next to her would be a huge dog, which always looked as if it was in charge of the vehicle!



For Hildy the world was a wonderful place; life was to be enjoyed and if you could find the way of helping someone else at the same time, all the better – and she was not afraid of getting her own hands dirty in the process. Once a project had been decided upon, she worked at it tirelessly, with enthusiasm, dedication and energy and with a gift for networking that would draw others in to help along the way.

Born in Indonesia, in Java, where her beloved father was an army paymaster, Hildy was one of three – Vonny, a sister with whom she had a good, close relationship and Else, a half-sister who died quite young. During her youth Hildy contracted a virus which caused that curvature of her spine which made her appearance so distinctive but about which she made no fuss. The Second World War gave the Indonesians an opportunity to rid themselves of Dutch colonials and Hildy and her family escaped back to Holland with very little to survive on in an occupied country. The war years were tough, starvation a reality that daily had to be faced. It was two very hungry girls, Vonny and Hildy who made their way to Paris determined to mark the end of war celebrations there. To satisfy their hunger they went into a restaurant and ate on the premise that they could not be made to give it back! In the end they paid with what they did have – that wonderful luxury commodity of which they had a little left from their time in Java – they paid with coffee!

Catching up with her education, lost through illness and the war, Hildy made a brave decision – she wanted to learn English and make a break for independence. She came to England and discovered for herself a whole new lifestyle; she became a Buddhist for a while, took up yoga and through Slade Art School crossed paths with Lucien Freud and Stanley Spencer. She lived amongst reactionaries, rogues and artists. She met and, in 1947, married Ralph Swinden, an artist. However, she was both homemaker and breadwinner, now in the teaching profession, as well as coping with two children – Yvonne and Ralph. Yvonne can remember that her mother could make a home, create a garden out of the most unlikely and inauspicious of habitations. But the marriage was not sustainable and Hildy made another break for freedom with the children and arrived in Sandhurst, Kent, taking up employment in a school there.

continued overleaf

HILDY SWINDEN *continued*

Used most of her life to having very little money, Hildy seemed able to manage on a shoestring and the children did not go short of holidays even if it was camping! 1963 saw her political convictions crystallize into joining the Liberal party – a party of which she remained a fully paid up member all her life and which she went on to represent at Borough Elections. Ever curious, ever interested in new methods and progress made in education and teaching, Hildy moved on from Sandhurst to Paddock Wood and then to Pembury where she finished her teaching career.

As a mother Yvonne remembers her as being of the type that allowed her to learn by experience – the type of mother who was always supporting and encouraging, often surprising and always interested. Hildy loved her family – those still in Holland and her own family here. She took great pleasure in Yvonne's career and marriage and the wonderful blessing as grandchildren came along.

Hildy had finished her teaching career but retirement for her included politics, the WRVS, setting up the luncheon club here in Pembury and her long association with Tunbridge Wells Mental Health Association of which she was chair for a year. She also served as school governor at St George's School. She loved her home, her garden and her dogs. And when she finally gave up the Borough Council she discovered a love for bridge too, taking lessons to gain competence and even putting that to good use as she organised a charity bridge evening raising a wonderful sum for the Mental Health Association. She always ensured that fellow Bridge Club players never lacked a partner.

Hildy had her first brush with cancer ten years ago and the second came with a vengeance. She made it quite plain that she was not ready to let go of life yet! Her enthusiasm for life, the community, and working with people, helping wherever she could, ensured she lived it out to the end. On the ward during her last hospital admission, she was still making contact, making friends, talking to those whom she thought she could help with a few kind words.

Adapted from the Revd Heather Hughes' address at Hildy Swinden's funeral, courtesy of Derek Hawes Richards

Lorraine Braam, a Liberal Democrat colleague, adds:

Hildy Swinden represented Pembury on the Borough Council as a Liberal Councillor (later as a Liberal Democrat) for 13 years until she retired in 1995. Hildy only commenced her political career after retiring from teaching at Pembury School so her second retirement might have seemed well deserved.

She always put the interests of Pembury residents first and became a well-liked and respected local councillor by the entire village. She worked hard on many planning issues and always fought to protect Pembury's Green Belt and rural fringe and to retain its village character. She took an early interest in environmental issues and was a keen supporter of recycling. Hildy always tried to improve circumstances for the elderly and infirm in the village, as she herself understood the difficulties infirmity can bring, but at the same time never lost her interest or understanding of the young.

HANGING BASKETS MADE TO ORDER

**always
something
different**

10% DISCOUNT
WITH THIS
ADVERTISEMENT

excludes sale items
& special offers

importer

olive citrus & palms
1000s of garden pots
clay glazed
& metal

grower

peat-free bedding &
unusual patio plants
organic herbs
& vegetables

supplier

garden & house plants
bulbs flowers hedging
seed potatoes
onion sets

Prima Pots @ Kings Toll Nursery

Maidstone Rd. Matfield TN12 7HA (B2160)

01892 824474

open 7 days - carry to car service - friendly advice

DROP-INS INSTANT CONTAINER GARDENING



PHYSIOfirst

Physiotherapy in your own home



Mrs Margaret Holmes MCSP

Tel: 01892 825201

Mob: 0772 0048047

make your appointment today

A Chartered Physiotherapist available for home visits. All physiotherapy treatment undertaken following a complete assessment during first consultation.

PBK'S BIG BIKE RIDE!

I AM NOW NEARING the completion of my preparations for the fundraising ride in June. Recent activities have included visiting Wiesbaden to meet my colleagues in Germany. This self-funded visit included meeting the town representatives at the Town Hall and undertaking media interviews for the press and radio. I was very impressed, not only with the warmth of the welcome, but by the support and organization offered by the good people of Wiesbaden.

The first four stages of the ride will be very hard as I have to average one hundred miles a day. The fifth and final day will be a gentle warm down [sic] from Dover to the steps of the Town Hall in Tunbridge Wells. Civic Way is to be closed to traffic and we will be welcomed by the mayors of our two towns. I am hoping that the final day will include my *peloton* (batch of riders) riding through the villages in the borough, stopping off at Pembury Village Green, before the last few miles of the journey. The details of this final day (18 June) should be published in the local press and it would be great to see you all outside The Camden Arms.

Finally, and as a reminder, I am doing this fundraising to improve the facilities in the recreational ground. You can use the sponsorship form opposite or you can download one from the website (Click the link on the front page of www.pembury.org and then choose 'Sponsorship' from the menu on the left.). Please contribute pounds or pennies as it will all go to this cause and we will see Pembury provided with the facilities it deserves.

Paul Barrington-King, 825144



Paul Barrington-King's Big Bike Ride 400
Wiesbaden to Tunbridge Wells 14 – 18 June 2006

SPONSORSHIP FORM

Your name _____ Your address _____

Name of sponsor	Address	Amount on Completion	Amount per mile (Approx 400 miles)

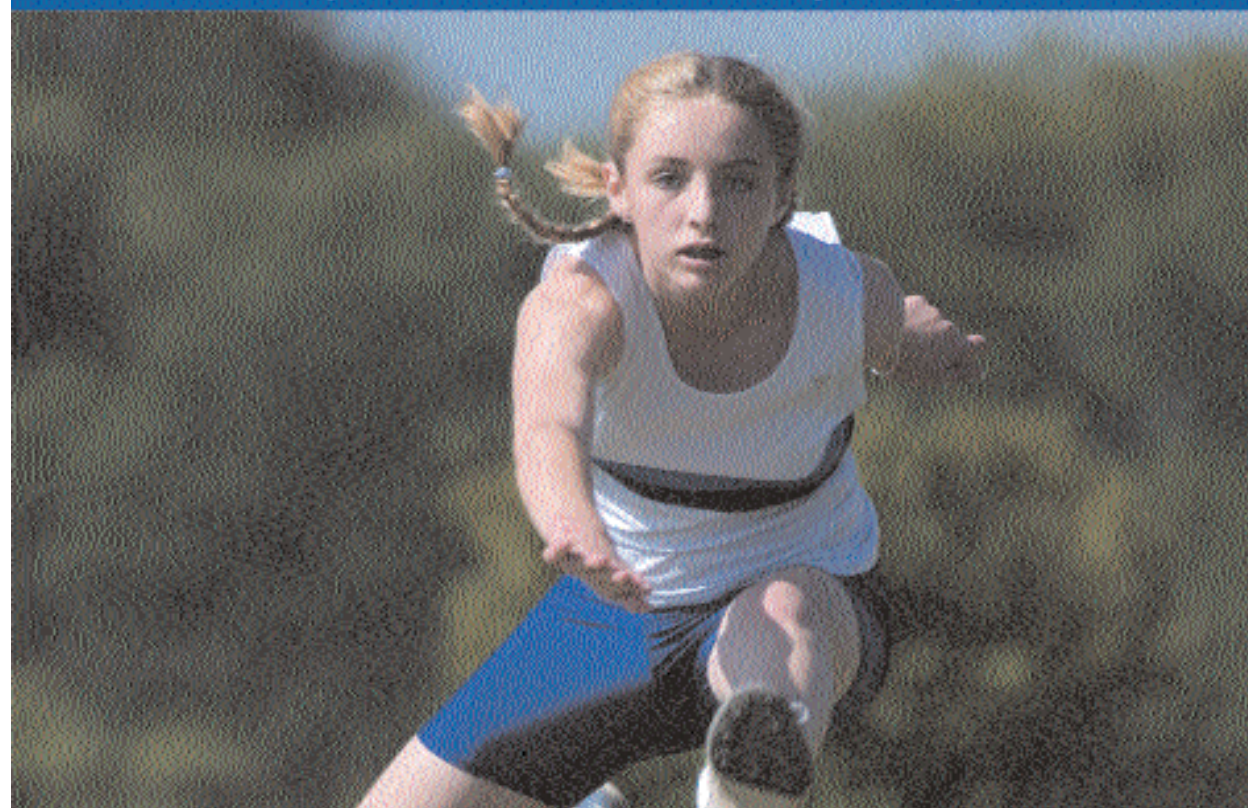
After you have collected all the above sponsorship money (cheques and donations made payable to: PBK Big Bike Ride), please post or deliver to: 10 Oakdale Road, Tunbridge Wells, Kent TN4 8DS (R.S.Gibson) or 22 The Coppice, Pembury, Tunbridge Wells, Kent TN2 4EY



Kent College Pembury

An independent school for girls aged 11-18

Nurturing Confidence, Inspiring Success



Building self-esteem is at the very heart of our ethos. All girls get a chance to shine, try something different, feel good about themselves and develop new and existing talents. Exciting opportunities to develop confidence are an integral part of school life: overseas music, drama and sports tours, an Australian exchange, 65 extra-curricular activities, and leadership courses, to name a few. Our aim is to equip students with the confidence, skills and positive attitude to succeed in their GCSE and A-level examinations, university and in their chosen career.

"The School has many strengths ... teaching is very good overall, and often excellent, enabling pupils to achieve very well and make very good progress ... excellent wide-ranging programme of extra-curricular activities ... very high levels of pastoral care."

Independent Schools Inspectorate Report, 2004

Listed 5th in Kent in the Valued Added league tables, January 2005

Kent College Pembury, Old Church Road, Pembury, Tunbridge Wells TN24AX
Tel: 01892 822006 Email: admissions@kentcollege.kent.sch.uk www.kent-college.co.uk

WE'RE RECRUITING!

No, it's not sudoku . . . although it does sometimes involve thinking laterally and being flexible!

Team work		Being on the inside track
Planning	Buzz of a successful job done	Be a voice for Pembury
Helping with problems		Serving your community

We have a number of vacancies on Pembury Parish Council and we need people to fill them.

You need to:

- Be an elector;
- Have resided in the Parish of Pembury or within 3 miles of it for 12 months before the date on which you are nominated;
- Or occupied, as owner or tenant, any land or premises in the Parish;

- Or have your principal or only place of work here;
- Be over 21;
- Be a British subject or citizen of the Irish Republic;
- Be of good character;
- Be able to attend regular monthly meetings of the full Council plus take part in working groups, usually monthly or quarterly.

You will need to sign up to the Local Government Code of Conduct – available from the Parish Clerk.

Interested? Contact the Pembury Parish Clerk, Barbara Russell, by 26 June 2006 on 823193 between 10am and 12 noon Monday to Friday for an application form and full information pack. You can also contact the office at any time by email: clerk@pemburypc.kentparishes.gov.uk or write c/o 6 The Grove, Pembury TN2 4BU.

Formal notice of vacancies is to be posted on village notice boards on Monday 5 June 2006.

Closing date will be 30 June 2006 at 12 noon and interviews or a poll will be held shortly after that date.



TRICKSTERS

TUNBRIDGE WELLS Community Safety Partnership's 'Tricksters' event at Pembury Baptist Church at the end of March was very worthwhile for those who came. Numbers of around 35 both morning and afternoon were a disappointment seeing the range of helpful advice on offer.

The 45-minute three-man show by the Solomon Touring Theatre focussed attention on how easily rogues and conmen can fool the unwary. But it also pressed home the helpful hints that keep the vulnerable safe. The musical show followed incidents in the life of George, a war veteran. There were some familiar wartime songs and others especially written to make relevant points about dealing

with doorstep salesmen.

Audience questions were well answered by a panel from Help the Aged, Neighbourhood Watch, the Fire Brigade, Kent Police and Community Wardens. Each organisation had a stand with plenty of literature and offers of help including smoke alarms and door locks.

If you didn't get there look out for a return visit of 'Tricksters', probably to be held in Tunbridge Wells. Transport can possibly be arranged for you if you ask. Tom Younger, our Pembury Community Warden, is the contact. Phone him on 07813 694138.

Leslie Gregory

**THERE IS A TOTAL HOSEPIPE BAN IN PLACE
UNTIL FURTHER NOTICE FOR ALL DOMESTIC
CUSTOMERS (AS AT 27 MAY 2006)**



On average, we use 165 litres of water every day for all our domestic needs:

Flushing the toilet	45 litres (7-10 l/flush)
Washing and bathing	50 litres
Drinking/cooking	15 litres
Laundry	25 litres
Cleaning/dishwashing	20 litres
Watering/Car washing	10 litres

Join us in a partnership to help save water – small changes to your daily routine can result in big savings.

Here are a few simple ways you can save water in the home and garden:

- Don't leave the tap running when you brush your teeth. A family of four could **save a bathful of water a day**.
- Fix any dripping taps. A dripping tap can waste **25 litres of water a day**.
- Take a shower instead of a bath. The average shower uses **30 litres** of water but a bath uses **80 litres**.
- Don't clean and peel vegetables under a

running tap. A tap left running for **10 minutes uses nearly 100 litres of water**.

- Make sure you have a full load for your washing machine/dishwasher. Each cycle of a machine uses up to **100 litres of water**.
- **Fit a water butt in the garden** to collect rain water. Plants prefer rain water. There is no need to water well-established trees and shrubs – they are generally drought-proof with a searching root system that will extract water from deep in the soil. Water directly around the roots of plants. Watering the leaves is wasteful as a high proportion evaporates. Don't water in the heat of the day. The water will evaporate before it reaches the roots. The best time to water is late afternoon or evening.

For further information on the total hosepipe ban you can visit our website at www.midkentwater.co.uk or call our customer help line on **0845 8 50 60 60**.

PEMBURY OUTDOOR BOWLS CLUB

THE OUTDOOR bowls season has now started! Our OPEN DAY is Monday 29 May 2006 from 2pm. All are welcome to come and have a go, just bring flat shoes.

If you cannot make the OPEN DAY (or it's too wet, come along to one of our roll-up sessions Monday and Fridays 2.30-4.30pm).

Barbara Scholten 823445



PEMBURY SCHOOL HOUSE NURSERY SCHOOL

PEMBURY SCHOOL House Nursery School are holding their Annual Garden Party on Sunday 2 July from 2-4.30pm in the Nursery garden (if wet, in Hall 2 of Pembury School). This year we will be showing off our new soft surface play area and play equipment funded by a National Lottery grant and parents' fundraising.

There will be many activities for children and adults alike including lucky dip, tombola, score-a-goal, hook-a-duck, raffle, children's competitions and much more! Our good-quality secondhand stall for baby's and children's clothes, white elephant and new book stalls remain with our usual selection of refreshments including mouth-watering home-made cakes and biscuits.

Come and join the fun and support your local nursery school. Judging by past years it will be a fantastic afternoon out for all the family and whether it rains or shines you will still have a good time!

SNIPPETS

BOROUGH ELECTIONS – THE RESULTS

The election for one of Pembury's three Borough Councillors was held on 4 May and there were two candidates: Tom Symondson (Liberal Democrat) who had represented Pembury since last year and Mike Tompsett (Conservative). The votes cast were: Mike Tompsett 1124, Tom Symondson 877 so Mike was duly elected. The percentage turnout was 44.7% of voters eligible to take part, the highest turnout in the Borough apart from Southborough North at 45.13%.

THE TERRIBLE TWO – LAZY PARKING AND HIS CONSTANT COMPANION SLOPPY DRIVING

A 'fan' of theirs writes to your Editor: "Please, please, please! Can you highlight the problem of very lazy people parking in such a dangerous manner? So many times I am driving through the village and this is happening. It's not only dangerous, it's stupid! Only last week I was driving through the crossing in the High Street by the chemists and a young woman suddenly parked up on the crossing and sprang out of her car on the driver's side. Not only was it a shock for me, but I almost took her door off. When I sounded my horn she just stood there using f*** words. Lovely!

I am a disabled person but I still would not park or drive without care and consideration"

PEMBURY EVENTS – CHANGE OF PLAN!

The Musical Picnic will take place on the Village Green on 10 June between 6pm and 9pm as usual. However, for various reasons including available manpower, effort concentrating on more events (both this year and next), and a wish to try different things, the Parish will not be running a fete as such this summer. Instead, the Parish Council will stage a fun day in the Lower Green Recreation Ground in the autumn when the refurbishment of the children's playground is

complete. The Fireworks night on Friday 3 November will also include much more, particularly on the food and drink front!

NEWS FROM COMPAID

An exciting art exhibition entitled 'This is Me' featuring work by local disabled people comes to the Corn Exchange, Tunbridge Wells from 24 June to 2 July. Artist in residence, Rosie Davis, has helped clients at COMPAID Trust's Activity Centre at Pembury Hospital develop new work, and the results celebrate the talents and skills of the artists using the computer as a tool for original, imaginative work.

Venue: The Corn Exchange, Tunbridge Wells, admission free.

Dates: Saturday 24 June to 2 July 2006.

Weekdays and Saturdays – 9am to 5.30pm:

Sundays – 10am to 5.30pm.

"THAT'S ENTERTAINMENT" AND DINNER DANCE AT THE RAMADA JARVIS

On 11 March parents, friends and the general public enjoyed a fabulous variety show called "That's Entertainment" at Pembury Baptist Church. The youngsters sung and danced their socks off and included tributes such as The Blues Brothers, Queen, Aretha Franklin, to name but a few.

The money raised from the sale of the tickets and the raffle reached an impressive £708 and will go towards improving the facilities in the children's play area in the Lower Green Recreational Ground. Well done to Dee Barrington-King and team for all their hard work and to everybody who supported the efforts of our youngsters.

Following this, Dee and team (Philippa James and Trisha Lester) raised over £3,500 at the dinner dance on 12 May at the Ramada Jarvis. "An amazing night", said Dee, with excellent food and a first class band.

"Massive thanks to the Jarvis and to

continued on page 28

SNIPPETS *continued*

Kaddy Lee-Preston who quadrupled her auction prizes on the night,” she added. The Cadillacs, who waived their usual fee, had everyone rocking. Most of all, Dee wanted to thank all the people of Pembury, “I don’t think there is anywhere else with such community spirit,” she concluded.

P.S. We understand that Dee may be starting up a theatre school – for more details call her on 825144

PEMBURY HOSPITAL SPORTS & SOCIAL CLUB

The club is the first bar in Pembury to go smoke free. Associate membership is also open to members of the local community. See www.mtw-ssc.co.uk for more details or tel. 01892 633945 or 633944.

RICHARD CROUCH – PEMBURY CRICKET CLUB

President of Pembury Cricket Club, Dick Crouch, stepped down as president at the club’s AGM. His innings with the club had lasted for 50 years. He opened it as a batsman, captained both XIs and went on to be secretary and latterly president.

The club presented him with a cut glass decanter for his long innings, which saw, among other projects, the building of the new club house. We wish him well in his retirement and look forward to seeing him on the Old Codgers supporters’ bench in the coming season.

CAR NAVIGATION SYSTEMS STOLEN

More and more car navigational systems are being stolen. Please take care to remove them from your cars or vans when not in use, so that passing thieves cannot see them.

MINI MOTORBIKES

Did you know that they can only be ridden on private land? It is not just mini bikes. If you own an electric or petrol powered

scooter or quad bike, please note they cannot be used in public places, including the public highway, without being taxed, insured, and registered and must comply fully with the Road Traffic Act and Vehicle Excise legislation. For more info on mini bikes, quad bikes or scooters, contact the Crime Reduction Unit on: 01732 876132.

PEPENBURY

On 3 April a number of residents at Pepenbury took up an invitation from Greg Clark MP to visit him at the Houses of Parliament. Greg welcomed them and took them on a tour around the Mother of Parliaments. This is a first for Pepenbury residents and is very much part of their aim to be more involved in the community in general.

Two of the group have recently left Pepenbury to live independent lives in Pembury. They are enjoying this new challenge and feel well accepted locally.

If you thought Pepenbury only sold plants, Pepenbury Farm Shop has local fruit and veg, meat, cheese, preserves, eggs, etc. plus crafts produced at Pepenbury; open 10am to 4pm 7 days a week. Even more, the coffee shop sells hot drinks and pre-prepared things like cakes and scones and there is also a charity shop on site, so plenty of opportunities for a spot of ‘retail therapy’!

SPEEDWATCH

The Speedwatch group is going out regularly around Pembury and producing good results. Volunteer watchers are actively being recruited and David Hanes, the co-ordinator would like to hear from you if you would like to join. The work involves hours to suit you; you will receive training on both the equipment itself and practical aspects of staffing a Speedwatch spot. Contact David on 823174 or email on dhanes@nildram.co.uk for more information.

(FREDERICK) DENNIS BARDEN 1931 - 2006

WITH THE passing of Den, as he liked to be known, Pembury has lost yet another of its colourful characters. Only a few days before his 75th birthday and shortly after his discharge from a lengthy hospital stay Dennis passed away at home in the presence of Nan, his wife of 55 years.

Den was born in Brenchley, one of eight brothers and sisters and moved to Pixot Hill where he grew up, attending Brenchley School. Upon leaving, he worked for Raymond Wickham on the fruit farms at Brenchley. It was during this time that he joined the local fire service and was an ever-ready volunteer for the work the occupation required.

Den then met and married local girl Nancy and begun married life in Matfield, the first of several moves which included Petteridge, Five Oak Green and Pembury. The marriage was blessed with four children – his beloved daughter Christine and sons Nigel, Kevin and Andrew. He was very much the family man but unfortunately sadness and bereavement were never far away. He lost a grandson as a result of a traffic accident, two sisters passed away and his daughter-in-law. The death of his own son Kevin, as unexpected as it was sudden, left him totally devastated and in truth he never really recovered from the traumas.

After leaving the farm Den took up employment with Gough Cooper for nineteen years, then worked for Crown Chemicals at Lamberhurst. His last employment was for the health authority at Pembury Hospital and it was there that his health begun to deteriorate. Following a bout of anthrax earlier on in his life he suffered the first of two aneurisms in 1991, followed by a second in 2000. It was this later misfortune that restricted his mobility and he became the instantly recognisable figure on his ‘puncture happy’ motorised buggy who was always happy to stop and pass the time of day with a friendly chat en route to the supermarket or local ‘chippy’.

It was with his gardening skills however, that Den really excelled and his allotment was his hobby and ‘other’ life. He was to be found almost every day, with the exception of the worst winter weathers, in his allotment shed where he would relax in his own company or engage in deep conversation with anyone who dropped in over a cup of home-brewed tea. Den liked nothing better than to identify a plant problem, its control and then confront any doubters with his A-Z encyclopaedia to confirm his diagnosis.

Den did not pretend to be the total gardener. ‘I’m not a flower grower, I’m a veg man’ – he would proudly proclaim and a veg man of extraordinary talent he certainly was. With a tidy, weed free allotment bursting at its immaculate edges, producing year round fresh vegetables, his expertise and attention to detail caught the judge’s eye in the annual best kept allotment competition (part of Pembury in Bloom) and he was outright winner on numerous occasions, proudly attending the awards ceremony to receive his winners shield.

Den exhibited produce at many local horticultural events including the prestige shows of the Kent Federation and Tunbridge Wells societies and he won numerous awards. It was at his local Pembury show that he proved what a top-class showman he really was, winning the prestigious ‘George Sturgeon’ vegetable cup for a record nine times. In addition, he won many awards for individual vegetable classes being particularly proud of his selected runner beans and unbeatable dishes of potatoes.

He will be sadly missed from the allotments but Nancy has in mind that the gardening tradition must be kept in the family and has given son Andrew and the grandchildren the task of trying to match at least some of the Dennis gardening magic.

Derek Parks

‘Our Dad was a good and honest man – he made no bones. He also grew some mean veg! The family are proud of his achievements. He will be a hard act to follow.’

Andrew J Barden (on behalf of Den’s Family)



The national agent with local knowledge.

Get the best of both worlds with **YOUR MOVE**.

Contact your local branch on **01892 825355***
or visit our website

www.your-move.co.uk



Moving made easier

*Calls may be monitored and/or recorded for training and/or data protection purposes.

West Kent Shooting School

We offer the most comprehensive range of Clay Pigeon shooting facilities in the South East of England



YOUNG SHOTS DAY

GIFT VOUCHERS



www.wkss.demon.co.uk

**Open Tuesday to Friday
from 10am to 5pm**



New Hay Farm, Old Hay
(off Pearsons Green Road)
Paddock Wood, Kent TN12 7DG
Tel: 01892 83 4306
info@wkss.demon.co.uk



LADIES DAYS

CORPORATE EVENTS



**English Sporting, Compact
English Skeet & Pheasant Flush**



**Lessons available for Novices
& Experts by appointment**

HOSPICE IN THE WEALD

SOME FABULOUS events are being organised to continue Hospice's 25th anniversary year. A 1930s/40s Rhythm & Ragtime Ball, featuring 'The Foxtrot Serenaders' is being held at the Spa Hotel on Friday 23 June at 7.30pm, carriages 1am, dress: Black Tie. Not only will there be a champagne reception followed by a three course dinner with coffee and mints, but you will also be able to dance the night away to the sounds of Glen Miller, George Gershwin, Cole Porter, Hoagy Carmichael, Jelly Roll Morton, Irving Berlin and many more. Tickets are £55 and tables of ten can be booked for a group (Full details at the end of this article)

On Sunday 9 July, from 12 noon to 5pm, a country fair will be held in the grounds of Chevening House, Chevening, near Sevenoaks by kind permission of the Board of Trustees of Chevening House.

There will be demonstrations by birds of prey, dogs, fly fishing and much more . . . Craft stalls, farmers market, live music, children's entertainment, maze, café bar, beer tent and rest area will all go to make up a wonderful day out for the whole family in a beautiful English garden and lakeside setting. Entry price: adults £5 (children free of charge). Free Car Parking within the grounds.

That same evening, you can listen to cool jazz on a summer evening as the 'Pasadena Roof Orchestra' will perform at 7.30pm (gates open for picnics by the lake at 6.30pm). Ticket price: £18.50 per person (children half price). VIP package for six people £390 to include: private candlelit cabana by the lake, personal butler service, champagne on arrival plus deluxe picnic box (optional). £390 with deluxe picnic box, £210 without picnic box.

Tickets from Box Office on 820530. Box Office open Monday to Friday 9am to 5pm. (If calling out of hours please leave your name and tel. no. and we will get back to you ASAP.) All telephone bookings subject to £1.50 admin charge. Tickets for both events can be purchased direct from Reception, Hospice in the Weald, Maidstone Road, Pembury TN2 4TA or by post to the Events Dept. (please make cheques payable to Hospice in the Weald).

YOUR COUNTY COUNCILLOR REPORTS . . .

Cornford House

In my new role as Cabinet Member for Adult Social Services, I was delighted to have been asked to visit Cornford House in Pembury and speak to the residents. I have to admit feeling a little apprehensive when I turned up and saw a "full house" complete with lectern, microphone and PA system! I stayed for much of the afternoon, and after my presentation, had a chance to sit and chat with several of the residents about their lives and their time at Cornford. A fascinating experience, it made me realise how lucky we are in Pembury to have such facilities on our doorstep, and I hope I will be invited again.

Outreach CAB at Pembury Library

I'm really pleased to have been able to respond to a local need for which many Pembury residents have pressed me – accessible Citizen's Advice. The CAB in Tunbridge Wells provides an excellent service, but many felt it was difficult to get to, on public transport. As a result, and thanks to the efforts of library staff from Wednesday 3 May, there has been a weekly CAB

session. For a six-month trial, the sessions will be held every Wednesday from 9.30am to 12.30pm, offering expert advice on Housing, Employment, Debt, Youth, Mental Health and Home Visiting caseworkers.

Creative Arts Café

We should all be proud of the work done by Pembury Baptist Church, particularly with local youth. The County Council along with the Parish Council provides funding for a weekly youth club, which has grown from strength to strength. As an infrequent visitor I can confirm a lively, vibrant atmosphere, full of young Pembury residents who value the evening's activities immensely. This year, I will be directing further KCC grant monies into a new project – the Creative Arts Café. The first of these monthly events was held on 24 May at 7pm in the church, café style, with a dance group coming in to teach the youth. I wish continuing success to all involved (including your KCC Community Warden Tom Younger!) and hope attendance continues to grow.

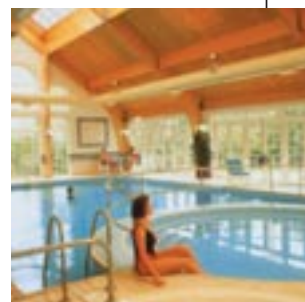
Kevin Lynes, KCC Member for Pembury



We are more than just a bedroom . . .

A modern hotel offering:

- 84 En-suite bedrooms including Luxury Suites as well as Meeting Rooms for 2 to 120 guests.
- Events such as Wedding Ceremonies, Corporate Entertaining, Christenings, Dinner Dances including Tribute Nights and Murder Mysteries.
- Poolside Club and Spa and new Beauty Studio.
- Great dining in our Mallows Restaurant offering an exciting choice of freshly prepared lunches and evening meals. Traditional Sunday Carvery every week. Themed evenings including Seafood Nights, French Nights and Summer BBQs and Disco.
- Relaxing Oast Bar and comfortable lounge for a relaxing light bite, refreshing drink or a selection of teas and coffees.
- Poolside Club – an atrium of tranquility with swimming pool, sauna, steam room and spa bath.
- Open to all – Pop in and see!
- Just 150m from Pembury Hospital and a few minutes' walk from the village.



Tonbridge Road, Pembury
Kent TN2 4QL.
Tel: 01892 823567
Fax: 01892 823931.
www.ramadajarvis.co.uk

G. F. GROVES

YOUR FRIENDLY LOCAL BUILDER

**CARPENTERS
JOINERS**

**BUILDING
CONTRACTORS**

EXTENSIONS/CONVERSIONS/NEW-BUILD

**PLANNING SERVICE AVAILABLE
PURPOSE-MADE JOINERY**

FREE ESTIMATES • FAST SERVICE

Telephone (01892) 838619

PEMBURY PEOPLE – JOAN WALES

“God isn’t looking for people of great faith, but for individuals ready to follow Him” Hudson Taylor

JOAN WAS born in 1916 at Seven Kings near Ilford in Essex, one of four children and her father was a managing director of a surgical appliance company in London. The family moved to Sandhurst Park Road in Tunbridge Wells in 1921 which was then an unmade road surrounded by garden nurseries. Joan began her schooling at St. James Primary School before moving to her next seat of learning at Tunbridge Wells County School for Girls.

It was in Paignton, Devon, when Joan was eight years old, that she became a Christian. She recalls *“In those days the Childrens’ Special Service Mission would have services on the beach with the children making pews and a pulpit out of the sand and using seashells as decoration”*. The following year Joan’s mother became gravely ill and this was a dreadful time for the family. She remembers *“One day I crept into her bedroom but when I saw how ill my mother was I turned away hoping that she would not see my tears,”* but Joan’s tear-stained face was reflected in the bedroom mirror. Her mother called Joan to her and said *“Don’t cry. We will talk to Jesus about it.”* Joan knelt down and prayed and then, truly believing that her mother would soon be better, she kissed her and went out of the room convinced that her mother would recover. A few days later it was a shock when Joan was told that her mother had died. She recalls *“I went to her bedroom and took the Bible from the table beside her bed. It opened at John Chapter 14 1-3 with the passage ‘Don’t let your hearts be troubled. Trust in God, trust also in me. In my Father’s house are many rooms; if it were not so I would have told you. I am going there to prepare a place for you. I will come back and take you to be with me that you also may be where I am. You know the way to the place where I am going’*”. Joan was comforted by this.

Joan’s schooling continued with an unhappy spell at Worthing before completing her education in Bideford, North Devon. With a desire to become a nursery nurse, Joan then proceeded to Princess Christian College in Windsor and then to her first and only post in County Wicklow, Ireland in 1935. During this summer, Joan attended a missionary meeting and she remembers

“This was where God spoke to me about serving him overseas.” The following year she attended a meeting held by the Keswick Convention where Joan remembers *“I was asked three questions ‘Does the Lord Jesus mean anything to you? Does the Lord Jesus mean something to you? Does the Lord Jesus mean everything to you?’*” Joan found this very challenging but she states *“I prayed to the Lord Jesus and He answered me by saying ‘Joan, if you cannot trust the One who died then whom can you trust?’”*

Joan, now fully committed to her vocation, was willing to travel anywhere and shortly after this, having been influenced by the biography of Hudson Taylor the founder of the China Inland Mission, her lifelong association with China began. Leaving her nursery post in Eire, she firstly helped in a home for unmarried mothers in Dublin and subsequently completed a year in Bermondsey, London at the Medical Mission Hospital. This was followed by an acceptance from the China Inland Mission to begin training but alas in September 1939 war broke out and this was disrupted. From 1941 to 1944 Joan was assistant matron at Fegan’s Home for Boys in Northamptonshire. Handing in her notice in May she continued her missionary training at Newington Green and the way was at last open for Joan to proceed to China.

The adventure began with Joan boarding a train with her six colleagues to journey from Kings Cross to Hull. She recalls *“The porters removed their caps as we all sang the 23rd Psalm before departing”*. A three

continued on page 35



Heritage New Drives

Block Paving Specialists

www.heritagewnewdrives.co.uk

Tel: 01892 723849 Mobile: 07785 112583

Thinking of a new drive?

Free Estimates – Give us a call

Paydon, Petteridge Lane, Matfield, Tonbridge, Kent TN12 7LX



- Accounts Preparation
- Personal & Company Taxation
- Bookkeeping & Payroll
- Business & Tax Advice

APEX ACCOUNTANCY OFFER A FIRST CLASS SERVICE FOR ALL OF YOUR ACCOUNTING AND TAX REQUIREMENTS. CALL NOW TO FIND OUT ABOUT OUR FIXED FEES, EXCELLENT SERVICE AND HOW WE CAN HELP YOU.

Tel: 01892 835738 or 07736 938411

Email: info@apexaccountancy.co.uk Website: www.apexaccountancy.co.uk

10% REDUCTION ON OUR FIXED FEES WHEN YOU MENTION THIS ADVERT WHEN CALLING



Home Improvements – Extensions – Free Estimates

ALAN CLARKE

BUILDERS & DECORATORS

Tel: Pembury 823932

PEMBURY PEOPLE – JOAN WALES *continued*

week sailing to Bombay followed and then a 48 hour train journey to Calcutta. An RAF transport plane then carried them to Chongqing with a bus ride then taking the group to Chengdu. A three day journey on a boat with no cabins then took them to Loshan where Joan studied Chinese at the language school. In 1947 she proceeded with some older colleagues to Zhaojue, a small fort 7000ft up in the Great Cold Mountains where missionaries had never been before. Joan remembers “*We were involved with medical work, visiting the villages and teaching several Chinese teenagers who had never been to school how to read their Chinese characters. In due course a few became Christians*”. Sadly, this work would end when the political climate in China changed in 1950. On Christmas Day the missionaries were informed that they had to leave their happy outpost. A very long journey followed, first on horseback and then by bus and boat to Hong Kong before being flown back to England in a BOAC airliner.

Within two years, however, Joan soon found herself working in Thailand with the Overseas Mission Fellowship now the new name of the C.I.M. The next thirty years were a very happy period for Joan and she recalls that the Thai people were very open and friendly. In 1983 Joan returned to England and took up residence in Reigate and soon found herself as the Parish Visitor to the Anglican Church of St. Mary’s. She moved to our lovely village of Pembury in 1993 and Joan began a loving bond with the Free Church that we now all know as the Baptist Church. She has returned to China seven times since 1983 to teach English to primary school children during their summer vacation.

Hudson Taylor has influenced the lives of many and I am sure that Joan is a legacy to his statement that “If I had 1,000 lives, I’d give them all for China.” Joan sees Pembury as a very special place and loves to be involved with the Baptist Church although I feel it will not be too long before China calls once again for her to continue her life’s mission.

Paul Barrington-King

Additional note from the Editor: We understand that Joan is off to China on 9 July for six weeks to teach English during the school holidays. Bon voyage, Joan!

THE WI IN PEMBURY

THE WOMEN’S Institute was founded in Canada in 1897. The first on this island was in Wales in 1915. The first group in Pembury was started in 1921. It was started as an organisation for women in the rural areas as a means of them socialising together and exchanging ideas. They enjoyed such activities as art, drama, poetry, cookery and craft. The Pembury group has met continuously since that date and has recently celebrated 85 years of unbroken membership. During the 1960s a second group was formed in Pembury known as Pembury Evening WI and is now a very active strong group.



However the original group now called Pembury Afternoon WI is still very much in existence. Originally, the ladies were very formal being known only as Mrs Hunt, Mrs Jury, etc. but nowadays we are all called by our first names such as Joan, Edna and Daisy. The groups are all very democratic and enjoy an interesting programme of talks, demonstrations and discussions. They hold combined District meetings at intervals during the year when they enjoy the company of members from all the other rural areas locally, Lamberhurst, Marden, Five Oak Green and Capel, to name a few, with a District Carol Service each Christmas.

Pembury Afternoon WI held a dinner in March to celebrate their birthday and members are seen here cutting the birthday cake.

Dawn Hodgson MSSCh MBChA
Chiropodist

- Professional Advice and Friendly Care
- Diabetic Assessment & Maintenance
- Verruca Treatment, Natural Remedies or Chemical
- Ingrowing Toenail Care
- Treatment for Fungal Infections
- Day and Evening appointments available



67 Hastings Road, Pembury
Tel: 07761 583 756
01892 824916

Full range of
Footcare products,
including 100% Natural
and Diabetic Friendly

Discounts for over
over 70s

HSA 50% refund available

10%
discount with this advert

Are your carpets this fresh all year round?

The only way to deal with deep-down dirt, harmful mites and nasty niffs in your carpets and upholstery is with regular, professional cleaning.

To put the colour back into your home, simply call:

Rainbow International

Unit 2, Apple Pie Farm, Cranbrook Road,
Beneden, Cranbrook, Kent TN17 4EU
email: e.novoa@rainbow-int.co.uk
web: www.rainbow-int.co.uk

CROWBOROUGH & NORTH SUSSEX

01580 243311

01892 824244

A FRANCHISE OWNED & OPERATED UNDER LICENSE

part of **ISS**
DAMAGE CONTROL

Rainbow
International
CARPET CARE & RESTORATION SPECIALIST
- a company in the ISS Group

BEAUTYTHERAPY

BY PAULA & MICHELLE

EXPERIENCED THERAPISTS – CITY & GUILDS I.H.B.X. & N.V.Q. QUALIFIED

Phone **0795 2863106** or **0791 3409081** for appointments

TREATMENTS AT COMPETITIVE PRICES

- MANICURE • PEDICURE • MANICURE WITH HEATED MITTS • PEDICURE WITH HEATED BOOTS • FACIALS
- WAXING • MASSAGE • AROMATHERAPY MASSAGE • MAKE UP • ELECTROLYSIS • EYE BROW & LASH TINTING
- RED VEIN & SKIN TAG REMOVAL • FALSE NAILS • EAR PIERCING • EYE LASH PERMING • ST TROPEZ TAN

SOUTHVIEW, ROMFORD ROAD, PEMBURY, KENT TN2 4BA

UNIVERSITY OF THE THIRD AGE

ARE YOU RETIRED or semi-retired? Is life in the slow lane just a little bit too slow? The University of the Third Age (U3A) is coming to Pembury.

The main aim of U3A is to “encourage and enable older people to help each to share their knowledge, skills and experience”. Another is to “celebrate the capabilities and potential of older people and their value to society”

and encourage the establishment of U3As in every part of the country.

Among the guiding principles on styles and methods of learning is the recognition

that “the pleasure of learning” is a driving force in U3A and that U3A members see themselves as both learners and teachers.

No qualifications are required to join – and no qualifications or degrees awarded.

Members are encouraged to see the value and take pleasure in learning for its own sake.

U3A defines “third age” as coming after the “first age” of youthful growth and education and the “second age” of maturity, career and/or home-making responsibility. It comes after full-time employment, usually with retirement and senior citizen status, but U3A does not specify any minimum age for membership.

The movement was founded in France in 1972 where it was closely linked to universities. When it came to Britain it became more of a self-help organisation. Most of the teaching and tuition comes from the ranks of its own members. It is a unique educational self-help co-operative. U3A is one of the fastest growing organisations in the country.

The precise pattern varies from place to place but a typical U3A will offer a range of interest groups from language classes to archaeological and philosophical studies, from art and craft groups to music appreciation and creative writing, from gardening to walking, from bridge to scrabble. There will also usually be a monthly meeting, with a speaker, and occasional outings to which all members

are invited.

As leadership comes from the members themselves, a U3A member may be a student in one group one day and the leader or tutor the next. It is not always necessary to have an expert as a leader. In some subjects, members learn from each other and the role of the leader is to encourage everyone to take part.

Interest groups are often quite small with meetings or classes taking place in members’ homes. Not only does this save on accommodation costs, it makes for friendly contact among members. Costs are

kept as low as possible so that members can take part in as many groups as they wish. Quite often members join to try out a subject that they always fancied. Others join because they are looking to make new friends in their retirement.

While each U3A is an autonomous unit responsible for organising its programme, the Third Age Trust, of which all local U3As are members provides local U3As with administrative and educational resources and support to help in running their groups. They also offer summer schools in a wide variety of subjects which are staffed by volunteer tutors.

A new Pembury U3A will need people willing to serve on the organising committee, people enthusiastic about a hobby or interest and willing to lead a small group, and lots of people who just want to learn something new and make new friends at the same time.

A meeting will be organised in the autumn for anyone interested in finding out more. The Kent Co-ordinator for new U3A groups will be there so that you can ask questions and there will be lots of information available. So that we can gauge the potential interest from Pembury and book a suitable hall for the first meeting, please would you send a stamped addressed envelope to Mrs Pauline Hawker, 1 The Rowans, Heskett Park, Pembury, TN2 4JQ and you will receive notification of the date and time of that meeting.



JAN'S GARDEN VIEWS

THE SEASON of SUMMER is especially welcome this year after the late arrival of spring that brought with it a hefty snowfall in this part of Kent, causing amazing damage. Flowers were flattened, young trees snapped and even older trees succumbed and lay uprooted. A neighbour's beautiful early flowering ornamental cherry tree was split down the middle; its pink blossoming branches scattered across the garden.

Now, we hope for long warm sunny days to sit out, relax and enjoy our gardens. Patios have become a favourite to do just this. Containers sited nearby are ideal for scented flowers that are a feast for the senses. Tobacco plants, pinks, lavender and night-scented stocks release their perfumes on warm summer evenings. Honeysuckle and roses can be trained to grow up trellis panels, are wonderfully scented and give privacy.

Choice of pots and tubs has never been so varied. There are glazed ceramics in bold colours (these may need frost protection.) Styles in wood, some broad and deep that would hold a shrub, possibly hydrangea. Then there are half-barrels and trugs – all add a rustic charm. Terracotta always blends well with bricks or natural stone. There are urns in reconstituted stone, some designed with classically inspired patterns – if you wish to be up-market!

Fuchsias, or ladies eardrops, are surely a 'must have' in every garden. Their exquisite abundant ballerina blooms hang from the branches of these deciduous shrubs for many months. The pendulous flowers have a colour range of mainly reds, pale and vivid pinks, purples and pure white. Their long flowering period extends from early summer to mid-autumn when grown outdoors, and often till the first frosts. Flowers can be single, double or semi-double. All have prominent stamens, usually eight, often highly coloured. Fuchsias differ widely in hardiness and habit. There are hardy hybrids that will survive outdoors all year round and make excellent focal plants and can even be grown as hedging. They vary in height but as they are pruned hard in early spring, can be controlled. The half-hardy

varieties have a much wider range of flower colour and flower size. These make excellent summer bedding



and container plants. They will over-winter in a greenhouse or frost-free place. Their habit is erect and bushy or trailing, the latter often chosen for hanging baskets and window boxes. Fuchsias are easy to propagate from cuttings and can be done when pruning in late spring or summer. They root easily in cuttings compost and grit on a sunny windowsill or unheated greenhouse. Plant fuchsias outdoors from mid-spring onwards (later for half-hardy to avoid risk of frost) in any fertile soil in a site with full sun or partial shade. Keep watered until established and apply a potash-rich (tomato feed) fertiliser in mid-summer. Add a protective mulch in autumn around the base of each hardy plant.

We now have a hosepipe ban and water has become a very precious commodity. Water butts retain rainwater from guttering that gives a continuous flow. In times of drought there are ways to prevent drying out. Plenty of organic matter worked into the ground and a thick mulch laid will help a lot. Established shrubs should only need water in very dry weather. Soak the soil around new ones thoroughly to last the plant for some time. Always water in the evening, as in the daytime it evaporates fast.

Some essential summer jobs:

- Keep weeds down, don't allow to seed
- Give roses a second feed to keep them flowering
- Also feed perennials every two weeks with a potash rich plant food
- Lawns too will need feeding and weeds eradicated
- Pests and diseases need to be dealt with promptly.

Have a wonderful summer!

Happy gardening!

Jan Davies

FOR YOUR DIARY

Village Coffee Morning – Village Hall Tuesdays 9.30am to 12 noon, full market last Tuesday of the month same times.

WRVS Lunch Club – every Wednesday at 11.45am in Pembury Village Hall during the school term time.

CAB – Pembury Library Wednesday mornings 9.30am to 12.30pm

June

- 14 The Big Bike Ride starts from Wiesbaden, Germany . . .
- 18 . . . The Big Bike Ride ends in Tunbridge Wells (see centre pages for more information)
- 24 COMPAID art exhibition starts – Pantiles, Tunbridge Wells – see Snippets page 28
- 24/25 Flower Festival – Old Church – open late mornings and afternoons

July

- 1 Pembury Footpath Walkers – Stonecourt Lane – 2.15pm
- 2 Pembury School House Nursery: Annual Garden Party – Pembury School – 2pm
- 3 Parish Council Meeting – Village Hall – 8pm
- 5 St Peter's Mothers' Union: Outing – Ightham Mote and Gardens – details 822769
- 6 Pembury Afternoon WI: Some Kent Ghosts – Village Hall – 2pm
- 7 Pembury Evening WI: Crime Prevention - Village Hall – 7.45pm
- 8 Pembury Gardeners: Summer Show – Village Hall - 2.30pm
- 10 Pembury in Bloom closing date – see enclosed leaflet
- 10 Floral Art – Village Hall – 8pm
- 15 Pembury School Association: 'Picnic in the Park' – Pembury School – 4pm to 8pm
- 16 St Anselms Silver Jubilee BBQ – Catholic Hall – details 822586

August

- 3 Pembury Afternoon WI: Crime Prevention – Village Hall – 2pm
- 3 & 4 Tunbridge Wells Borough Council: Multi-sports for children – Lower Green Recreation Ground – 9.50am-12.00pm – call Elise Rendall on 01892 526121
- 4 Pembury Evening WI: Members' meeting – TBA – details from 824969
- 5 Pembury Footpath Walkers – Camden Arms – 2.15pm
- 9 St Peter's Mothers' Union: Members' garden party – contact Secretary for details 822769
- 14 Floral Art – Village Hall – 8pm

September

- 1 Pembury Evening WI: Hoping for a Few Laughs – Village Hall – 7.45pm
- 2 Pembury Footpath Walkers – Stonecourt Lane – 2.15pm
- 4 Floral Art – Village Hall – 8pm
- 6 St Peter's Mothers' Union: 'Growing Up in Pembury 2' – Upper Church Meeting Room 8pm
- 7 Pembury Afternoon WI: Royal Ladies – Village Hall – 2pm
- 9 Pembury Gardeners: Autumn Show – Village Hall – 2.30pm
- 11 Parish Council Meeting – Village Hall – 8pm
- 17 Pepenbury: 'Taste of Kentish Fare' – Pepenbury, Cornford Lane – 10am to 4pm

CRIME IN PEMBURY

WELL, WHAT CAN I say? You may remember that the last set of crime figures for October, November and December 2005 totalled 55 recorded incidents and we set a target of 47 for this quarter. Well, the total number of recorded incidents for January, February and March 2006 is 42. Brilliant! But we must not get complacent.

Criminal damage and theft from motor vehicles are still much too high, so please, before you leave your car or go to bed at night, just have another look around to make sure that you have left nothing too obvious to tempt the 'villains'.

Sadly, the Pembury Gardeners' Society shed at the allotments was broken into back in March and stock to the value of £120 was stolen and £90 of damage inflicted to the locks and building. The Society offers a great service to the gardeners of the village and is also a great place for a natter on a

Sunday morning. This raid seems to have been the culmination of months of planning and the stolen goods may be being laundered through the black market as I write.

So, whilst this quarter was an excellent improvement, we can't let up.

Use the free contact card given by the Parish Council in the Winter issue of this magazine, pester the police if you think it is necessary; they can't act without your call, and be vigilant. It is your vigilance that has brought this figure down.

Your target crime figure for April, May and June is 39 (or below) and I am sure that together we can do it.

Good Luck and don't forget your Community Warden, Tom Younger (07813 694138).

Hugh Boorman

MONTH	Assault	Criminal Damage	Fraud and Deception	Drugs	Theft from Motor Vehicle	Theft of Motor Vehicle	Vehicle Interference	Theft Offences	TOTAL
January 2006	1	7	2		10	1	1	3	25
February 2006	2	5		1	5	2			15
March 2006					2				2
TOTAL	3	12	2	1	17	3	1	3	42
ROAD									
A21B						1		1	2
Beagles Wood Road		2							2
Bellfield Road		1							1
Bulls Place		1							1
Camden Avenue		1							1
Church Road							1		1
Hastings Road		1			1	1		1	4
Henwood Green Road	2	4			2				8
Hérons Way						1			1
Highghfield Close					1				1
High Street	1		2						3
Lower Green Road		2							2
The Grove				1					1
Tonbridge Road					13			1	14
TOTAL	3	12	2	1	17	3	1	3	42

*Too much football?
Take a Break, grab your racket (or umbrella!) and
join Pembury Players for . . .*

Commercial Break
a comedy by Carolyn Drury



and

Anyone for Tennis?
a farce by Gwyn Clark



*Friday 16th and 17th June 2006
7.45pm – Pembury Village Hall*

*Tickets £6.00 (includes strawberries and cream)
Licenced Bar.*

Tickets from Speights; Post office; Pembury Pharmacy

CHURCH TIMES

ST. PETER'S CHURCH SERVICES

Upper Church

8am Holy Communion

9.45am The Parish

Eucharist

and Junior Church

10am Holy Communion

(Wednesdays)

Old Church

11.30am Matins (except
first Sunday, Holy
Communion)

Evening services as
advertised on Church
noticeboards

CATHOLIC CHAPEL OF ST. ANSELM – PEMBURY

Sunday Mass 10.30am

Holy Days – Vigil Mass

7.30pm

Confessions:

Sunday 10.15am

Weekday Service:

Wednesday – Mass 7pm

PEMBURY BAPTIST CHURCH

We praise God and hear
his word on Sunday at
10am. Children's and
young peoples' group
meet as well. Evening
services as advertised.

We have many activities
during the week for
mums, toddlers, young
people and senior citizens.
Ring the church office
825590 for details.

YOUR REPRESENTATIVES

COUNTY COUNCIL

Kevin Lynes, 5 Downs Cottages, The Down, Lamberhurst, Kent TN3 8EX. Tel: 890922

BOROUGH COUNCIL

Paul Barrington-King, 22 The Coppice, TN2 4EY. Tel: 825144

David Mills, 125 Ridgeway, TN2 4ET. Tel: 825577

Mike Thompson, 14 Gimble Way, TN2 4BX. Tel: 822711

PARISH COUNCIL



Cllr David Coleman
22 Ridgeway TN2 4ER
Tel: 823402
Chairman of Parish Council



Cllr Steve Morton
2 The Coppice TN2 4EY
Tel: 824938
Vice Chairman of Parish Council
Chairman of Planning & Highways
Working Group



Cllr Jennifer Ayres
21 High Street TN2 4PH
Tel: 824922
Chairman, Finance, Audit &
Personnel Working Group



Cllr June Crowhurst,
44 Elmhurst Avenue TN2 4DA
Tel: 824873
Chairman, Amenities, Christmas
Lights and Pembury in Bloom



Cllr Keith Farley
3 Beagles Wood Road
TN2 4HX
Tel: 823440



Cllr Leslie Gregory
47 High Street TN2 4PH
Tel: 822343
Chairman, Public Relations
Working Group



Cllr Alison Morton
2 The Coppice TN2 4EY
Tel: 824938
Chairman, Pembury Village News
Editorial Working Group



Cllr Sally Osborn
34 Canterbury Road
TN2 4JT. Tel: 822726
Chairman, Allotments, Burials,
Environment & Environmental
Improvement Working Group



Cllr Norman Starkey
71 Henwood Green Road
TN2 4LW
Tel: 823227



Cllr Mike Tompsett
14 Gimble Way
TN2 4BX
Tel: 822711



Clerk to the Pembury Parish Council
Barbara Russell, 6 The Grove
TN2 4BU. Tel: 823193
Email:
clerk@pemburypc.kentparishes.gov.uk



Deputy Clerk to the Pembury Parish Council
Richard Parsons, 6 The Grove
TN2 4BU. Tel: 823193
Email:
deputy@pemburypc.kentparishes.gov.uk

VILLAGE ORGANISATIONS

AGE CONCERN

Mrs Sandra Springett. Tel.: 522591

ALZHEIMERS DISEASE SOCIETY

Simon Rooksby, Pineview Day Hospital

Pembury Hospital. Tel: 823535, Ext 3515

BLACK & WHITE MARCHING MILITAIRE

Tel: Louise 823097

BOWLS CLUB

Len Birnie. Tel: 01892 681222

CATHOLIC CHURCH

Deacon Bill Eason. Tel: 824133

COMPAID TRUST

Computer Aid for Disabled People. Tel: 824060

Transport for Special Needs. Tel: 823488

CONSERVATIVE PARTY

Terry Cload, 56 Herons Way. Tel: 823966

CRICKET CLUB

Hon. Secretary: Andy Dawes, 17 Cornford Park, Pembury.

Tel: 822862

FRIENDS OF PEMBURY HOSPITAL

c/o Pembury Hospital. Tel: 823535

FRIENDS OF PEMBURY PARISH CHURCH

Chairman: Mrs S. Clarke, Little Stanton,

Romford Road. Tel: 823932

GUIDES, BROWNIES AND RAINBOWS

Mrs M. Allan, 9 Henwood Green Road. Tel: 822373

HEADWAY

Libby Slattery. Tel: 823120

HOSPICE IN THE WEALD

Maidstone Road. Tel: 820500

KENT COLLEGE

Headmistress: Ann Upton. Tel: 822006

KENT COLLEGE PREP SCHOOL & NURSERY

Headmistress: Anne Lawson. Tel: 820204

LABOUR PARTY

Dave & Sally Osborn, 34 Canterbury Rd. Tel: 822726

LIBERAL DEMOCRATIC PARTY

David Mills. Tel: 825577

LITTLE RASCALS (formerly 'Meet-a-Mum')

c/o PBC Office. Tel: 825590

NATIONAL CHILDBIRTH TRUST

Co-ordinator: Helen Dunkerley. Tel: 822529

NATIONAL FEDERATION OF THE BLIND, UK

Michael Coggles. Tel: 822705

NEIGHBOURHOOD WATCH

Gill Pavely. Tel: 822605

PEMBURY ATHLETIC (YOUTH) FOOTBALL CLUB

David Gow. Tel: 824119

PEMBURY BAPTIST CHURCH

Rev. Wayne Alexander

Church Office. Tel: 825590

PEMBURY BRIDGE CLUB

Geoff Plummer. Tel: 824652

PEMBURY COMMUNITY WARDEN

Tom Younger. Tel: 07813 694138

PEMBURY COMMUNITY WORKING PARTNERSHIP

Richard Parsons. Tel: 823193

PEMBURY F.C. SATURDAY

Mick Waterman, 26 The Coppice. Tel. 824137

PEMBURY F.C. SUNDAY

Phil Craxton, 34 Woodhill Park. Tel: 823928

PEMBURY FOOTPATH WALKERS

N. & K. Franklin, 11 The Meadow. Tel: 823212

PEMBURY GARDENERS

Ann Purton. Tel: 824223

PEMBURY PHOENIX TWIRLERS

Dave or Chris Brett. Tel: 824233

PEMBURY PLAYERS

Chairman: John Hawker. Tel: 824327

PEMBURY PRE-SCHOOL NURSERY

Mrs C. Hughes. Tel: 668514

PEMBURY SCHOOL

Headteacher – Mrs C. Thewlis. Tel: 822259

PEMBURY SCHOOL ASSOCIATION

Rachel Castle. Tel: 822259

PEMBURY SCHOOL HOUSE NURSERY

Teacher in charge: Rosemary Rich. Tel: 825580

PEMBURY SEQUENCE DANCE CLUB

Secretary: Mrs Marion Warren. Tel: 547617

PEMBURY SHORT MAT BOWLING CLUB

Arthur Storey. Tel: 822509

PEMBURY SOCIETY

Steve Morton. Tel: 824938

PEMBURY TENNIS CLUB

Mrs S. Smith, 2 Ridgeway. Tel: 822405

PEMBURY UPPER AND OLD CHURCH

Rev. Matthew Jackson Tel: 824761

PEMBURY VILLAGE MARKET

Sue Boreham Tel: 824385

Eve Fiddimore Tel: 518277

PEMBURY (formerly Larkfield)

Principal: Mr Roger Gibson, Cornford Lane. Tel: 822168

ROTARY CLUB OF SOUTHBOROUGH & PEMBURY

Secretary: Mike Raper. Tel: 01892 520171

ROYAL NATIONAL LIFEBOAT INSTITUTION

Peter Chartres, 54 Woodhill Park. Tel: 823759

SANDRA'S HOUSE

Pre-School Nursery, Mrs S. Toogood, Queens Folly,

64 Lower Green Road. Tel: 824252

SCOUTS, CUBS AND BEAVERS

Mike Cartwright, 16 Cornford Park, Pembury.

Tel: 823235

SCOUT & GUIDE HQ MANAGEMENT TEAM

Mike Cartwright, 16 Cornford Park, Pembury.

Tel: 823235 and Moira Allan, 9 Henwood Green Road.

Tel: 822373

ST. PETER'S MOTHERS' UNION

Secretary: Mrs M. Adams. Tel: 822769

ST. PETER'S PHOTOGRAPHIC CLUB

Events Secretary, Carol Wakeford. Tel: 822030

TABLE TENNIS CLUB.

John Burleton. Tel: 823250

TREE WARDEN.

Caroline Mazzey Tel: 822493

TUNBRIDGE WELLS ACCESS GROUP

Gill Pavely Tel: 822605

TUNBRIDGE WELLS & DISTRICT VICTIM SUPPORT

SCHEME. Tel: 513969

VILLAGE HALL

Manager (bookings): Rachel Windus.

Tel: 822837

WOMEN'S INSTITUTES

Afternoon: Mrs Edna Morris. Tel: 822267

Evening: Mrs Elizabeth Bellchamber. Tel. 824969

WRVS LUNCH CLUB

Contact: Mrs Amanda Everett. Tel: 823280

YMCA

Simon Stanley. Tel: 534444



Kent College Preparatory School, Pembury

An independent school for girls aged 3-11

Happiness + Confidence = Success



We believe that a happy, confident child is a successful one and our girls love school. High academic standards, excellent SATs results and preparation for grammar and independent senior schools (including our own) are at the heart of what we do, but we never forget that there is more to childhood and learning than examinations. If you would like to know more about our approach to developing happy, confident and successful pupils, please contact Mrs Shephard for a prospectus and DVD or visit our website where you can see a daily update of what our Nursery class are doing.

"A happy and secure learning environment ... teaching is very good overall and often excellent enabling pupils to achieve very well ... excellent wide-ranging programme of extra-curricular activities ... very high levels of pastoral care."

Independent Schools Inspectorate Report, 2004

Kent College Preparatory School is an independent school for girls aged 3-11.

Nursery class from age 3 with flexible attendance.

Old Church Road, Pembury, Tunbridge Wells TN2 4AX

Tel: 01892 820204 www.kent-college.co.uk