

# PEMBURY VILLAGE NEWS

ISSUE 123

AUTUMN 2005



# CONTENTS

2005 Village Fete On The Green	3 & 5	To Plan Or Not To Plan – That Is The Question!	24
Pembury's New Borough Councillor – Tom Symondson	7	Mayor of Tunbridge Wells Visits Compaid Trust Resource Centre	25
Pembury Farmers' Market	7	Jan's Garden Views	27
Pembury Blooms Again	9	My Plot	28
All Change!	11	Make It A Date	28
Compaid Night At The Flicks – 26 November 2005	13	Your Clerk Reports . . .	30
Pembury School Family Days	13	Rosie's Recipes	33 & 34
Your County Councillor Reports . . .	15	For Your Diary	35
Pembury People – Sarah Clarke	16	Crime in Pembury	36
Schools Thoughts From 50 Years Ago	17	Making Connexions – Information And Advice For 13-19 Year Olds	37
Snippets	19	Church Times	37
Pembury Musical Picnic On The Green	20 & 21	Your Representatives	38
Did You See?	23	Village Organisations	39
The Delivery Man Scam	23		

## *Editorial Working Group:*

Alison Morton (Editor), Jennifer Ayres, Paul Barrington-King,  
Janet Ditchett, Leslie Gregory, Rosie Latter and Ann Owen

*Please note: The Editor's decision is final on whether or not to publish any item submitted. The Editor reserves the right to edit (that is to cut, précis, alter, correct grammar and spelling) any item published.*

## PEMBURY VILLAGE NEWS

Editor: Mrs Alison Morton  
2 The Coppice, Pembury TN2 4EY  
Tel: 824938 Fax: 825134  
Distribution enquiries: Parish Clerk 823193  
**Email: [pvn@pembury.org](mailto:pvn@pembury.org)**  
**Website: [www.pembury.org](http://www.pembury.org)**

Pembury Village News is published four times a year by the Parish Council, but the views expressed in the magazine do not necessarily represent official council opinion or policy.

Typeset and printed by  
TMH, Tunbridge Wells.



## 2005 VILLAGE FETE ON THE GREEN

**T**HE SUN DEFINITELY had his hat on this year! After the washout last year, we were praying for good weather and we were not disappointed. Holly Lewis and Paul Fitzgerald from Meridian opened the fete and the Mayor of Tunbridge Wells, Cllr Jenny Paulson-Ellis, came along for a good part of the afternoon.



Traditional stalls such as tin mine, face painting, lucky numbers, raffle, plants, bric-a-brac, sweets and books, together with stalls from village organisations such as the Pembury Society, plus some new attractions – the cups and saucers roundabout – meant there was something for everybody. Both the tea tent with delicious (and much sought after) home-made cakes run by the Evening WI and the barbecue, run by Juliet Lewis-Williams on behalf of the Parents of Autistic Children Tonbridge, were very popular throughout the afternoon.

Music was provided by Richard Reyn who got many feet tapping with classic rock and pop songs. Pembury people, their friends and visitors flocked to the green that afternoon and over £600 was raised for Headway, Compaid and St Johns Ambulance.

*continued on page 5*

### **COPY FOR NEXT ISSUE**

*Any news items or articles for possible inclusion in the next issue of this magazine must be forwarded to the Editor before  
**1 November 2005.***

*If you use a computer to type your article, it would be extremely helpful if you could send it (and photos) in by e-mail to [pvn@pembury.org](mailto:pvn@pembury.org)*





**Give yourself a treat!**

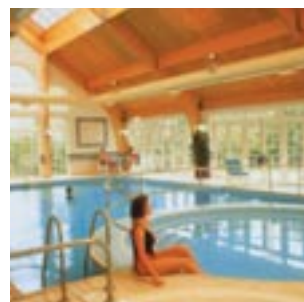
A modern hotel offering:

- 84 En-suite bedrooms including Luxury Suites as well as Meeting Rooms for 2 to 120 guests.
- Events such as Wedding Ceremonies, Corporate Entertaining, Christenings, Dinner Dances including Tribute Nights and Murder Mysteries.
- Fine dining in our Mallows Restaurant offering an exciting choice of freshly prepared lunches and evening meals.
- Relaxing Oast Bar and comfortable lounge for a relaxing light bite, refreshing drink or a selection of teas and coffees.



Tonbridge Road, Pembury  
Kent TN2 4QL.  
Tel: 01892 823567  
Fax: 01892 823931.  
[www.ramadajarvis.co.uk](http://www.ramadajarvis.co.uk)

- Poolside Club – an atrium of tranquility with swimming pool, sauna, steam room and spa bath.
- Open to all.
- Just 150m from Pembury Hospital and a few minutes' walk from the village.



# Burtons Pembury's Solicitors

- ★ Full Range of Legal Services
- ★ Prompt Efficient Friendly Service

The Tyled House  
23a High Street  
Pembury, Kent TN2 4PH

**Tel (01892) 824577**



## 2005 VILLAGE FETE ON THE GREEN *continued*

The fete was put together by a dedicated team from the Parish Council Public Relations Group. Thanks must also go to all the other helpers who helped set up and take down everything at each end of the day, including the (new and very smart) large marquee. Pembury School kindly loaned their staging again (as they had for the musical picnic).

However, the lynchpin of the whole event was Parish Clerk Barbara Russell who did a great deal of the 'donkey work' beforehand of organising the stalls, highways and health & safety, borrowing equipment, securing raffle prizes, etc. as well as being there the whole day until 8pm.

Yes, it was hard work, but it was also a great success and a lot of FUN!

See you next year . . .



*Flowers being presented to Meridian Television's Holly Lewis and Paul Fitzgerald.*

# David Salter

## Gas & Plumbing Services

Central Heating Installations & Upgrades

Boiler & Cylinder Changes

Breakdowns, Connections & Servicing of all gas appliances

15 Years experience with British Gas

Corgi Registered



**EMERGENCY CALL OUTS – MOBILE 07733 107333 – HOME 01892 824481**

# Brian V Toogood

**CARPETS & VINYLs SUPPLIED & FITTED  
CARPETS & UPHOLSTERY CLEANED**



*Stain protection treatment for carpets and upholstery*

**FOR PERSONAL & PROFESSIONAL SERVICE TEL: PEMBURY 824252**



OVER 28 YEARS' experience.  
EST 1977

Any make of carpet available.  
Pattern books brought to your home.  
Carpet and upholstery cleaning, also rugs  
and orientals.  
Carpets adapted and repaired.

# JULIE ROBINSON

IHBC, BABTAC

**Professional Beauty Therapist**



FULL RANGE OF PROFESSIONAL BEAUTY TREATMENTS AVAILABLE  
WITHIN COMFORTABLE AND PRIVATE SURROUNDINGS



**SPECIALISED DERMALOGICA FACIALS \* MAVALA MANICURES/PEDICURES  
WAXING \* TOP-TO-TOE TREATMENTS**

*Please telephone for a list of treatment details. PEMBURY (01892) 824059*

# KEITH RABBITT

AMIMI

**VAUXHALL SPECIALIST**

**31 years' experience at Renny's of Tonbridge**

**Most makes serviced and repaired**

Why go to a franchised dealership when you can have  
a personalised service on a one-to-one.

**For quality, reliability and a friendly service call Keith on  
01892 723362 or 07790 436109**



M.O.T. TESTS



---

## PEMBURY'S NEW BOROUGH COUNCILLOR – TOM SYMONDSON

**T**OM WAS born in Pembury Hospital in November 1982, attended Pembury Primary School and then Mascalls in Paddock Wood. After A levels he went to study International Relations at the University of Plymouth, gaining a BSc(Hons) before moving back to Pembury to take up a place on Kent County Council's leadership development programme.

Since returning, Tom has become a governor of Mascalls, where he is chair of the Health and Safety Committee and link governor for music and humanities. This makes him currently the youngest school governor in Kent!

Asked about the reason he decided to become a borough councillor, Tom says, *"Villages like Pembury are too often forgotten by a council more concerned with the town*

*centre and I want to change that. Having spent my life in Pembury, I understand how important it is to keep its 'village' feel while going ahead into the 21st century."*



Tom plans to campaign for better transport links, particularly for people who rely on public transport. The current, rather limited, timetables to and from Pembury can be frustrating, especially outside rush hours.

He also feels strongly about the lack of youth facilities in the village and will work with other local councillors to help change this.

Tom enjoys travelling and tries to visit new places as often as possible, having been to the USA and the Czech Republic so far this year. He is a keen musician, playing both the cello and piano. He also enjoys singing, both as part of a choir and as a soloist.

---

## PEMBURY FARMERS' MARKET



*Busy buyers at Pembury Farmers' Market on 5 August.*

## P.L.H. DECORATING

Interior - Exterior  
Painting & Decorating

Pembury (01892) 825772

Mobile 07941 068717

E-mail: plh.decor@virgin.net

# STURGEON'S

ROAD, DRIVE & CIVIL ENGINEERS  
COAL MERCHANTS

PEMBURY 822221/2/3

HANGING BASKETS MADE TO ORDER

always  
something  
different

**10% DISCOUNT**  
WITH THIS  
ADVERTISEMENT

excludes sale items  
& special offers

importer

olive citrus & palms  
1000s of garden pots  
clay glazed  
& metal

grower

peat-free bedding &  
unusual patio plants  
organic herbs  
& vegetables

supplier

garden & house plants  
bulbs flowers hedging  
seed potatoes  
onion sets

Prima Pots @ Kings Toll Nursery

Maidstone Rd. Matfield TN12 7HA ( B2160 )

**01892 824474**

open 7 days - carry to car service - friendly advice

**DROP-INS** INSTANT CONTAINER GARDENING



---

## PEMBURY BLOOMS AGAIN

**T**HE SUN SHONE and the winners of Pembury in Bloom 2005 celebrated their win at Notcutts Garden Centre yesterday in a quintessentially English way by having afternoon tea. The finalists had all gathered to find out who had won in this year's competition, a secret much-guarded by the judges until the day of the presentation

The new Notcutts Garden Centre manager, Aston Bull, and Cllr. June Crowhurst of Pembury Parish Council awarded prizes and certificates to the following for their floral feats. The winners were:

### **Best Front Garden**

1st John Wooden, Henwood Green Road – £100 in Notcutts vouchers; 2nd Lisa Gouldthorpe, Sandhurst Avenue – £50 in Notcutts vouchers; 3rd Patrick Campbell, Henwood Green Road – £25 in Notcutts vouchers.

### **Best Hanging Basket**

1st Ernest Mackleden, Middlefield – £70 in Notcutts vouchers; 2nd Melanie Hambleton, Woodhill Park – £30 in Notcutts vouchers; 3rd Shirley Steel, Tonbridge Road – £15 in Notcutts vouchers.

### **Best Children's Container**

1st Matthew Williamson, Heskett Park – £20 in Notcutts vouchers; 2nd Aidan Gouldthorpe, Sandhurst Avenue – £10 in Notcutts vouchers; 3rd Bethany Greagsby, Hastings Road – £5 in Notcutts vouchers.

### **Best Allotment**

Fredrick Barden, Woodside Road Allotments.

### **Most Attractive Commercial Property**

The Camden Arms, High Street.





*Left to right: John Wooden, Carol Cunningham, Cllr June Crowhurst, Frederick Barden, Aston Bull (standing), Ernest Mackleden and Rebecca Williamson (for Matthew Williamson)*

Certificates were also awarded to those Highly Commended in the Front Garden and Hanging Basket categories.

At the presentation Cllr June Crowhurst congratulated everybody for all the time and effort that they had put into making Pembury bloom this year and said: *"The judges always enjoy going around Pembury judging this competition and with so many beautiful displays it was a hard task to pick the winners. Every year we receive more and more entries and next year a newcomer's category will be included."*

## Accurate? Reliable? To deadline?







### We are!

- ★ Audio typing & general wordprocessing
- ★ Reports, book drafts, mailshots
- ★ PowerPoint presentations
- ★ Spreadsheet and database management
- ★ Quality assured European translations
- ★ Friendly, reliable and professional service

Official hosts of the  
Pembury Village  
News website  
[www.pembury.org](http://www.pembury.org)

**PBSS Translations**  
**Pembury Business & Secretarial Services**  
**Tel: 01892 824833**  
**[www.pbss-uk.com](http://www.pbss-uk.com)      [partners@pbss-uk.com](mailto:partners@pbss-uk.com)**




THE HEALING ART OF

## ***REFLEXOLOGY***

***Reflexology has been shown to be effective for:***

Back pain	Hormonal imbalances
Migraine	Sports Injuries
Arthritis	Digestive disorders
Sleep disorders	Stress related conditions



***CELIA PRICE    01892 824333 (Member of AoR)***  
***15 Henwood Green Road, Pembury***

## AMBERSIDE DANCE STUDIO

### *PEMBURY VILLAGE HALL*

PRE-SCHOOL CREATIVE MOVEMENT CLASSES FOR BOYS AND GIRLS  
 BALLET, MODERN AND TAP DANCING CLASSES. ISTD SYLLABI  
 AND EXAMINATIONS

ADULT BALLET STRETCH CLASS  
 SATURDAY MORNING CLASSES FOR YEAR ONE CHILDREN

**Please Contact: Margaret King AISTD – 01892 822574**

---

## ALL CHANGE!

### ST PETER'S PEMBURY

*After Rev Stephen Sealy's departure from Pembury last November, Rev Heather Hughes has been 'holding the fort'. However, from September, Pembury has a new Vicar and we would like to extend him and his wife a very warm welcome to Pembury and hope they will very quickly feel at home in our village.*

Rev Matthew Jackson, 30, previously curate at St Margaret's in Kings Lynn, is looking forward to moving to Pembury to have his own parish and getting to know the congregation and people in the wider community. Having been a chaplain to Southampton's Mission to the Seafarer's Centre, he admits that a drink at the local was one of the more pleasant aspects of the Vicar's work!

Originating from Norfolk, he attended university at Aberystwyth, worked in Southampton for a while before ordination training in Cuddesdon near Oxford. He met his wife, Emma, a physiotherapist, when he was working as a parish assistant at Fawley (New Forest). They have a very bossy cat called 'Humbug'. Matthew and Emma enjoy walking, eating out and going to the cinema.

Matthew's induction service will be on 13 September at 7.30pm at the Upper Church to which everybody is welcome. In his article in 'The Key' (St. Peter's newsletter), he looks forward to working with people in Pembury. 'I'm sure the first task will be to listen carefully and to learn about the hopes and fears, the problems and the opportunities facing us in the church and the wider community so that we can find the best way forward together.'

*(Our thanks to 'The Key, The Newsletter of St Peter's Pembury' for the information and photograph)*



*The Rev Matthew Jackson and his wife Emma.*

---

### ST ANSELM'S PEMBURY

Fr Geoffrey Pointer has been at the Catholic Church in Pembury for the last 14 years. He has been in charge of the Parish of St Justus in Paddock Wood and the Catholic Chapel of St Anselm in Pembury, ably helped by his two deacons of whom Rev Bill Eason is the Deacon in Pembury.

Fr Geoffrey has now been appointed to a new much larger parish in Gillingham and we shall all be sad to see him go. This was his first parish as priest in charge and, in his own words, he has learnt a lot from us. He has overseen the complete overhaul of the roof of the building, seen the kitchen updated and the new toilets installed so that we now comply with the regulations for people with disabilities. Many people have come and gone during his stay and been influenced by him. We all wish him well in his new parish and we must move on.

We have a new priest starting with us, Fr Liam Gallagher, who has been known to Fr Geoffrey since the age of eight when he was an altar server in Fr Geoffrey's parish in Strood. He has previously worked in Tunbridge Wells and recently in Maidstone so knows the area already. We welcome him in September and hope he gets on well with his Pembury congregation and with the other churches in Pembury.



*Father Geoffrey Pointer.*



**Tel: 01892 824420**



**BLADErunners**  
PEMBURY *ghd*

GUINOT  
INSTITUT - PARIS

*Heavenly  
Elements*

BEAUTY & SKINCARE  
for men & women



Putlands Leisure Centre, Mascalls Court Road  
Paddock Wood, Tonbridge, Kent TN12 6NZ  
Telephone: 01892 835505

**Burslem  
Stonemasons** EST 1880

**Memorials, Restoration and  
Domestic Stonework**

232 The Ridge  
Hastings  
East Sussex TN34 2AE  
**Tel: 01424 421 099**  
**Fax: 01424 722 237**  
[www.burslem.co.uk](http://www.burslem.co.uk)

New Memorials, Cleaning,  
Memorial Renovation and  
Additional Inscriptions.  
Brochures available

**WALROND  
FULLER**

**CHARTERED BUILDING  
SURVEYORS AND  
PROJECT MANAGERS**

**01892 709600**

**STRUCTURAL SURVEYS  
ADVICE ON LISTED AND  
PERIOD PROPERTIES**

---

## COMPAID NIGHT AT THE FLICKS – 26 NOVEMBER 2005

**C**OMPAID IS PLANNING to show the classic film *Dead of Night* [1945, b&w, 104 minutes, Ealing Studios] at Pembury Village Hall on 26 November. The cast includes Michael Redgrave, Mervyn Johns, Googie Withers, Ralph Michael, Basil Radford, Naunton Wayne & Frederick Valk.

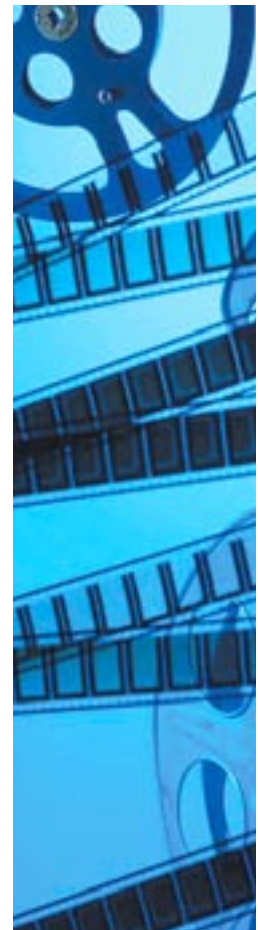
The film tells five supernatural tales. Visiting a country house, architect Walter Craig (Mervyn Johns) realises that it and his fellow guests are familiar from a recurring nightmare. As the guests share their own tales of the supernatural, Craig is filled with a growing dread. Michael Redgrave plays the troubled, and finally unhinged, talented ventriloquist driven to attempting murder by his apparently conscious dummy. The linking narrative, directed by Basil Dearden, holds the film together effectively, building up a sense of dread towards the suitably delirious conclusion.

The background to the film is interesting. *Dead of Night* was made in 1945 and is one of a handful of true 'horror' films of the British cinema's first half century, certainly the most important film in that genre until the beginning of Hammer's horror cycle a decade later. The film marks a break from the documentary-influenced realism that had dominated wartime films, particularly Ealing's.

Jonathan Balcon has kindly agreed to give an introductory talk about his memories of the heyday of Ealing Studios under his father, the late Sir Michael Balcon.

Tickets are £5 (this includes tea and biscuits), payable either at the door or in advance. Further information from Barry O'Sullivan on 824060

An event not to be missed!



---

## PEMBURY SCHOOL FAMILY DAYS

**I**N RECENT months Pembury School has sought to engage the School community and the wider community by providing a range of activities. The School has worked closely with the Adult Education department at Tunbridge Wells Borough Council to provide a partnership that benefits all age groups.

In the initial stages we have held two family days at the school that have encouraged all families in the community to join with us to celebrate the range of learning opportunities that are available. These sessions were held on Saturdays and open to all, with a free ploughman's lunch provided.

From these initial ventures we have held a

series of sessions that have enabled parents, and the wider community, to take part in a literacy and numeracy programme. The aim has been to share the range of different ways that children now encounter these two vital strands of learning.

We have just completed our fourth session and in September we will be holding another series. All are welcome even if you do not have a child at the school but are seeking a wider understanding of literacy and numeracy.

If you are interested please contact the School Office in the second week of September (tel: 822259).

**Cath Thewlis,**  
Headmistress, Pembury School



## Peter Willard Conservatory Specialist

Your Local Supplier of Top Quality

UPVC Conservatories. Any size and

many different styles.

Just call *NOW* for a Free Estimate

*...A Complement to Your Home*

Telephone no. 01892 824736      Mobile no. 07950 120341



Home Improvements – Extensions – Free Estimates

# ALAN CLARKE

*BUILDERS & DECORATORS*

Tel: Pembury 823932



---

## YOUR COUNTY COUNCILLOR REPORTS . . .

### **REPRESENTING PEMBURY:**

Though stepping into the shoes of Patrick Mayhew and Archie Norman was always going to be daunting, Greg Clark, our new MP, has made an excellent start. He has already demonstrated his willingness to work on local issues alongside both County and Borough colleagues of all political persuasions. Greg and I have already held a successful Saturday morning 'Pembury Surgery' at the Camden Arms. I am sure we all wish him, his wife Helen and their young daughters all the best in his new role.

In June the sad death of Bruce Ballantine resulted in a local by-election for Pembury. Again, the campaign was hard fought on the doorsteps, but by just a few votes Tom Symondson became Bruce's replacement. I wish him well as a newly elected borough councillor, and hope he will work alongside me, Paul Barrington-King and David Mills, putting aside politics for the good of Pembury. If he can exhibit just a fraction of the passion and commitment shown by Bruce, he'll be doing well.



### **KCC COMMUNITY WARDEN:**

By now you should all have seen Pembury's KCC Community Warden, Tom Younger walking his 'beat' in and around the village. I've received many positive comments from both young and old since he arrived, and he's fast becoming an indispensable part of village life.

In writing, you may not be aware that PC Chris Goddard, Pembury's Community policeman, retires this month. Chris has been hugely committed to Pembury, and in particular its young people, and he will be sorely missed by the village.

### **TRAFFIC ISSUES:**

I couldn't close this bulletin without an update on the Pembury 'SpeedWatch' initiative. The equipment has been purchased and I understand the training has now been organised, so it won't be long before motorists who speed through Pembury will be 'caught' and their speeds reported to Kent Police. Let's hope that this, in conjunction with the other recent measures such as road marking, village gateways and more prominent speed roundels, will really start to make a difference throughout the village.

Whilst we all owe a debt of gratitude to the Speedwatch volunteers, we always need more volunteers – for SpeedWatch, youth work, graffiti cleaning and litter picking – the more residents become involved, the cleaner and safer Pembury will be for us all.

For more details on any of the issues above, or if I can do anything to help as your County Councillor, please call me on my mobile number 07834 308015.

**Kevin Lynes**

## PEMBURY PEOPLE – SARAH CLARKE

**I**T WAS THE leadership guru Max De Pree who stated *“The first responsibility of a leader is to define reality. The last is to say thank you. In between, the leader is a servant”*. This philosophy might suitably reflect the efforts of our former Parish Council Chairman Sarah Clarke who, with her astute leadership, has guided us through many recent challenges and, in her own words, has now ‘taken a pause’. After nine years at the helm she has stepped down to enjoy a well-earned break from the pressures of community responsibility.

Married to Alan and having one daughter, Catherine, Sarah was born in Islington. One of three daughters, the family home was in Weston and then Harpenden with Sarah’s father being an economist and her mother a qualified physiotherapist. Her school years were spent at Malvern Girls College before graduating from the University of Essex with a degree in social sciences. It was in 1969 that Sarah moved to Frant and soon found herself not only supply teaching at St Peters in Tunbridge Wells but also taking the post of Clerk to Frant Parish Council. It was during this time that Sarah first met her future husband Alan.

A long association with the legal profession began in 1973 with Sarah becoming a partner in practice at the Nat West Chambers in Paddock Wood. During this year Sarah moved to Pembury (Heskett Park) and, in line with Ibsen’s comment that ‘A community is like a ship; everyone ought to be prepared to take the helm’, she soon became involved in local civic activity. Derek Betts, the then owner of the stores in Henwood Green Road and Chairman of our Parish Council, persuaded Sarah to join in 1978. This particular tenure saw her as Chairman until 1987. The Sussex Police Authority also recognized Sarah’s skills

and she joined their prosecution team in Hastings.



Two more changes of residence followed – to Greenleas and then Romford Road in Pembury. The career side of Sarah’s life was also moving apace with the setting up of a private practice in West Malling before becoming a partner at Thomson, Snell and Passmore in Tunbridge Wells. It wasn’t long before Sarah was needed again in parish life, returning as Vice-Chair in 1995 before taking up the Chair during the following year. Other community roles have included the Chairmanships of The Friends of Pembury Parish Church and Pembury

2000+. To add to this impressive workload, Sarah also currently sits as a deputy district judge!

During the rare moments of relaxation Sarah’s many interests include gardening, her pets, music, reading and travel. A confirmed Francophile, having lived and worked in France, this love affair has seen friendships lasting over forty years. She has a penchant for Normandy and Provence with the town of St Remy, birthplace of the visionary Nostradamus, having a particular place in Sarah’s heart. Yet one is reminded of how special our own village is when Sarah states *“People in this area do not know how fortunate they are. We really live in a green and pleasant land that has not only great beauty but also unique qualities. When people move to our village they do tend to stay.”* Many thanks, Sarah, for your unstinting efforts in preserving our vibrant community; all of us I am sure will agree with her when she concludes *“It is important for Pembury to be permitted to retain its individuality and special nature”*.

**Paul Barrington-King**

## SCHOOL THOUGHTS FROM 50 YEARS AGO

*"I have been a pupil at Pembury Primary School since 1998 and my Nan was also a pupil there from 1951 to 1957. As I will be leaving the School this term, I decided to talk to my Nan in order to find out what the school was like fifty years ago. I devised twenty questions to interview my Nan about some of the differences.*

**M**Y NAME IS Janet Cook (née Weeks) and when I was a pupil at Pembury Primary School it was very small. There were three infant classrooms which are still used today and 4-5 classrooms in the senior school house which is now 130 years old. The infant classes were down at the bottom of the school grounds. The Headmaster's name was Mr Beynon and I remember him being very kind and well liked. He lived in what is now the Pembury School House Nursery.

The uniform was very similar to what it is today but we did not wear polo shirts, Pembury School was not written on the jumpers and the ties were slightly different but the school colours were the same. School uniform was not compulsory, as many parents could not afford to buy it. We didn't have mufti days then either.

The playing area has changed now as the playground then was very small and it was around the old school buildings and the area below the steps. There were no playing fields when I was a child.

Our desks were wooden with a lift-up lid and in the corner was a small china ink well. There was no school fete in the summer term but we had a 'bring and buy' sale on a much smaller scale. We also had a sports day which was held in the Pembury recreation ground every summer.



*Janet Cook with grandson Joe.*

Our curriculum was very basic. We had maths, English, geography, history, nature study, music and needlework. Our music lessons were held in the Institute which is now the village library. There was no homework and no swimming either. The teachers were very nice although I do remember one that I didn't like!!

Most local children walked to school as few people had cars. There was a small coach that went around the outlying areas picking up the children. Some did cycle to school and they kept their bicycles in a shed at the bottom of the playground. Once a year the local policeman PC Edmonson used to visit the school and we would bring our bicycles for him to check the reflector, the bell and the brakes to see that everything was in working order.

Most children had school dinners which I remember everyone moaning about but actually they weren't that bad! My favourite thing was gypsy tart – and it still is today.

I remember going on a school trip to Lullingstone Castle where they had silkworms and also to Bodiam Castle. I enjoyed my days at Pembury School and I cried when I left."

*Having interviewed my Nan I can see how things have changed but I think one thing that I would like to be able to do today would be to cycle to school.*

### **Joe Meiners**

With thanks to Hazel Hawes-Richards for all her help.



**10%**  
discount with this advert  
for work completed by (31.07.05)



## Are your carpets this fresh all year round?

The only way to deal with deep-down dirt, harmful mites and nasty smells in your carpets and upholstery is with regular, professional cleaning.

Help is at hand from your local branch of Rainbow International. Our fully trained personnel will provide you with a top quality, safe and cost-effective service.

Your carpets and upholstery will be really clean, bright and soft to touch. And our special de-odourisation process leaves your furnishings smelling lovely.

To put the colour back into your home, simply call:

**Rainbow International**  
Unit 6, Crown Yard, Bridgebury Park, Goudhurst, Kent TN17 2QE  
email: e.novos@rainbow-int.co.uk  
web: www.rainbow-int.co.uk

Crowborough, North Sussex, Ashford & New Romney

**01580 212701**

**“Buy One and Get One Free!”**  
(Limited period only)  
Subject to terms and conditions

a part of  **DAMAGE CONTROL**

  
**Rainbow International**  
CARPET CARE & RESTORATION SPECIALIST  
- a company in the ISS Group

# G. F. GROVES

Your friendly local builder

**CARPENTERS  
JOINERS**

**BUILDING  
CONTRACTORS**

**EXTENSIONS/CONVERSIONS/NEW-BUILD**

**PLANNING SERVICE AVAILABLE  
PURPOSE-MADE JOINERY**

**FREE ESTIMATES • FAST SERVICE**

**Telephone (01892) 838619**

---

## SNIPPETS

### **Village Fireworks – 4 November**

The annual fireworks show will be held in the Lower Green Recreational Ground and will start at 7.30pm. Light bracelets, shakers, headbands, etc. will be on sale. Please bring a torch for your own safety and please ensure that all children are accompanied by a responsible adult. The show is FREE, but we will be taking a collection for our three sponsored charities - Compaid, Headway and St Johns Ambulance – so do bring some pennies with you.

---

### **Local author to give talk – 2 November**

Well-known resident of Pembury, Elizabeth Coxon-Taylor has written memoirs of her interesting life called *'Brewing, Ballet and Bedpans'*.

Pembury Library is delighted to welcome her on Wednesday 2 November at 11am to 12 noon to talk about her book. Free tickets are available from Pembury Library, Henwood Green Road, Please contact 822278 for further information.

---

### **Borough Council Election June 2005**

As there was a vacancy for Pembury following the death of Borough Councillor Bruce Ballantine, an election was held on 30 June. The results were as follows:

Tom Symondson (Lib Dem)	699
Mike Tompsett (Conservative)	657
Victor Webb (UKIP)	41

Tom Symondson was elected as Pembury's third borough councillor. His contact details are on page 38 and you can read about him on page 7.

---

**Hospice in the Weald** are looking for someone to lead a community group, based in Pembury, who would organise some events to help raise funds for the hospice. If you feel able to help or require further information please contact Helen Bournat on 820532.

---

### **Weald of Kent Crossroads Autumn Roadshow, Pembury Village Hall, October 28 2005 10am to 12.30pm**

Our Celebration Fayre last year was a great success and we would like even more local

people to come along. As it is being held during the half term holiday, we are catering for children and families as well which will make it a fun event for all.

**Linda Wyton**, Weald of Kent Crossroads

---

### **Your events in December 2005**

If you would like to publicise your Christmas and New Year events during the second half of December, please email or write to the Editor by 1 November with details of your event. *(As the News is published in the first week of December, events before 12 December are, however, likely to miss publication.)*

---

### **Kent Community Safety Booklet for the West Kent Police Area**

By now, you should have received the above booklet, most of them delivered with the News in Focus during late July/early August. It's packed with useful telephone numbers and information about benefits, recycling, housing, road safety, fly-tipping, etc. Further information from the Tunbridge Wells Police Community Unit on 01892 502033.

---

**Burslem Stonemasons**, one of our long-standing advertisers, is celebrating 125 years in business. Apart from local memorial stonework, they have carried out restoration work on Hever Castle and Penshurst Place, provided fireplaces, kitchen worktops, plaques and other bespoke stonemasonry. Burslems built the famous Menin Road Gate at Ypres as well as monuments at other famous battlefields and, more locally, the new Tonbridge War Memorial in 2004.

---

**The Village Pharmacy** (formally Ditchetts Chemist) has advised us that they are expanding the shop considerably and planning a new dispensary, a private consulting room, as well as a ramp for less mobile customers. Ida Charnings, the pharmacist, asks for your sympathy and support during the building phase which may last for several weeks. She says the shop will remain open, with the odd closure here and there for health and safety reasons, but they will try to give plenty of notice!

## PEMBURY MUSICAL PICNIC ON THE GREEN

SATURDAY 11 JUNE 2005 saw the (now annual) Pembury Musical Picnic on the Green, organised by Pembury Parish Council. Live music was provided by 'The Rhythm Kings', mostly light jazz/easy listening, plus local band 'Get Right Back' headed up by Paul Beeching and colleagues from Pembury Baptist Church.

This year, the Pembury-Lompret Friendship Project invited the Mayor of Lompret to bring a group over and the Mayor, Michel Loosvelt, his wife Marie-Claude and fellow councillor Jean-Paul Vinckier joined us on the Village Green. We also welcomed our new MP, Greg Clark, as well as 'regulars' such as Kevin Lynes, our County Councillor.

The evening was mild and crowds of Pembury residents from every part of the village turned out with their picnics, wine, tables & chairs, rugs, etc. Glasses clinked, greetings were exchanged, children ran around in high spirits and memories stirred as the music played. Only the failing light, a slight chilling in the air and the yawns of exhausted children persuaded people that it was time to go home.

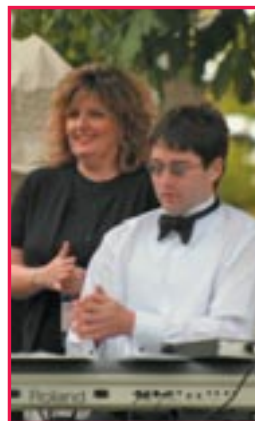


*The Mayor of Lompret meets our new MP Greg Clark.*



*The Rhythm Kings in full swing.*









**Kent College Pembury**

An independent school for girls aged 11-18

## Nurturing Confidence, Inspiring Success



Building self-esteem is at the very heart of our ethos. All girls get a chance to shine, try something different, feel good about themselves and develop new and existing talents. Exciting opportunities to develop confidence are an integral part of school life: overseas music, drama and sports tours, an Australian exchange, 65 extra-curricular activities, and leadership courses, to name a few. Our aim is to equip students with the confidence, skills and positive attitude to succeed in their GCSE and A-level examinations, university and in their chosen career.

"The School has many strengths ... teaching is very good overall, and often excellent, enabling pupils to achieve very well and make very good progress ... excellent wide-ranging programme of extra-curricular activities ... very high levels of pastoral care."

Independent Schools Inspectorate Report, 2004

**Listed 2nd in Kent in the Valued Added league tables, January 2005**

Kent College Pembury, Old Church Road, Pembury, Tunbridge Wells TN2 4AX  
Tel: 01892 822006 Email: [admissions@kentcollege.kent.sch.uk](mailto:admissions@kentcollege.kent.sch.uk) [www.kent-college.co.uk](http://www.kent-college.co.uk)

---

## DID YOU SEE?

**I**N AUGUST, a very thought-provoking television programme was broadcast about the care of the elderly in some of our hospitals, how they could not eat the food provided or manage to feed themselves, thus going hungry which obviously stilted their recovery emotionally and physically. There was also much distress caused to the hard-pressed staff who have to continue day-in and day-out without enough resources and manpower to do a very demanding job.

We all have friends and neighbours employed at the hospital or in the local care and residential centres and know just how dedicated they are. I am in no way suggesting that their patients receive anything but the best care available; however, it made me think. Do they need an extra pair of hands at mealtimes? What could I do to help? Would it be possible to find a little time? Would that be allowed or welcome? All fairly straightforward questions, I think. Meeting up with various friends and acquaintances I was pleased to hear many had seen the same programme and felt they could offer some help. Most of us have loved ones we cannot help due to location but still would like to do SOMETHING for another in distress.

Through a friend at the hospital I have had a meeting with the Voluntary Services Manager who was very happy to assure me that although Pembury Hospital has a very high reputation for patient welfare they would be delighted to get such help. At present, there are four wards, with just under 20 patients each who could benefit from volunteers assisting between 12 noon and 2pm. Obviously, there would be no call for any medical work, lifting or washing, just assistance to make the patient comfortable, ensure they had a drink and help in the serving and giving of food to those in need.

There would be a few forms to fill in, basic information, background and health mainly, for the protection of both sides and I am hopeful that by mid to late September a scheme can be put together to put these ideas into practice.

If you feel that you can spare two hours once a week, fortnightly, monthly or just be on an emergency list, I would love to hear from you. You do not need any medical background, just a desire to bring a little light. You can be male, female, old, young, retired, unemployed or a student. Transport would not be a problem as we should be able to arrange to share days with drivers who will get a parking permit so no expense will be incurred. I do hope some of you will give this a little thought. It would be lovely to hear from you and who knows, by the time we end up needing a helping hand our wonderful new hospital will be built and a list of volunteers will be there ready and waiting.

**Sue Boreham** – 824385

---

## THE DELIVERY MAN SCAM

**W**E HAVE learnt about another delightful way that conmen are relieving us of our pennies . . . A supposed delivery man (and it usually is a man or two men), rings your doorbell with a 'parcel for next door'. (The conman has already checked that 'next door' is out.) Being neighbourly, you agree to take the parcel in and the delivery man then says that there is £XXX to pay on the parcel.

You are in a fix; you don't want to disoblige your neighbour, so you feel you should pay it.



Unfortunately, this is a scam.

By all means continue to take parcels in for neighbours from proper postal workers and couriers, but never pay anything to a delivery person who asks for money. Firmly refuse to pay and ask for a contact card so that your neighbour can arrange an alternative delivery date. That will probably be the last you see of them!



## TO PLAN OR NOT TO PLAN? – THAT IS THE QUESTION!

**T**HINKING OF extending or altering your house or property? Do you need planning permission? Common examples of when you will need to apply for planning permission are:

- Your proposed house extension is above a certain percentage (permitted development) of the size of the original house.
- You want to make additions or extensions to a flat or maisonette (including those converted from houses).
- You want to divide off part of your house for use as a separate home, for example, a self-contained flat or bed-sit.
- You want to divide off part of your home for business or commercial use, for example, a workshop, or you want to build a parking place for a commercial vehicle at your home.
- You want to build something which goes against the terms of the original planning permission for your house. An example is where your house may have been built with a restriction to stop people putting up fences in front gardens because it is on a specifically designed 'open plan' estate (The Borough Council keeps a record of all planning permissions in this area.).
- The work you want to do might obstruct the view of road users. For instance, where the fence, wall or gate would be over 1 metre high and next to a highway used for vehicles; or over 2 metres high elsewhere.
- The work would involve a new or wider access to a trunk or classified road.
- You want to build an addition which would be nearer to any highway than the nearest part of the 'original house', unless there would be at least 20 metres between your house (as extended) and the highway. The term 'highway' here includes all roads, footpaths, bridleways and byways, if they are public rights of way.
- More than half the area of land around the 'original house' would be covered by additions or other buildings.
- The proposal will remove (or be detrimental to) a tree or trees.

- Your house is a listed building or in a conservation area or in (or close to) the Metropolitan Green Belt or the Area of Outstanding Natural Beauty.

If you are carrying out internal alterations or work which does not affect the external appearance of the building, you generally do not need planning permission. Neither is it required for small alterations to the outside such as the installation of telephone connections and alarm boxes. However, always check with the Borough Council's planning service!

If your application is partly or wholly refused or is granted differently from what you asked for, or is not determined within the time limit of eight weeks, you can appeal. Appeals are made to the Planning Inspectorate.

### **Enforcement**

If you go ahead with your development without the required permission, the Borough Council – the planning authority for this area – may ask you to make a retrospective planning application.

If it decides that permission should not be granted, you may well be required to put things back as they were. You can appeal, but if the verdict comes out against you and you still refuse to comply, you can be prosecuted.

### **General advice**

If you are in any doubt about whether you need to apply, you should consult the planning department of the Borough Council. For further information about planning see the Tunbridge Wells Borough Council Website [www.tunbridgewells.gov.uk](http://www.tunbridgewells.gov.uk) Another good source of advice is the national planning portal [www.planningportal.gov.uk/wps/portal](http://www.planningportal.gov.uk/wps/portal)

### **Steve Morton**

Chairman, Planning Working Group,  
Pembury Parish Council

*Please note: This article is published as a helpful guideline only, does not constitute legal, professional or expert advice. No liability whatsoever is accepted for any dispute arising from any legal or planning process or the results of any legal or planning process.*

## MAYOR OF TUNBRIDGE WELLS VISITS COMPAID TRUST RESOURCE CENTRE

**T**HE MAYOR of Tunbridge Wells, Councillor Mrs Jennie Paulson-Ellis, paid an official visit to local charity, COMPAID Trust on Thursday, 7 July.

The Mayor spent four hours with the staff and clients learning about the work COMPAID Trust undertakes with disabled adults. Cllr. Paulson-Ellis said: "I have seen COMPAID's fleet of special needs adapted minibuses around the town but I had no idea that COMPAID did so much more".

The Mayor met clients at COMPAID's Resource Centre and saw some of the paintings and designs produced using computers and specialist software. She also heard from Lynn Batchelor, COMPAID transport manager, about COMPAID's minibus service for the disabled and elderly in Tunbridge Wells, Tonbridge and Malling.

Jacqui Culmer, who lives in Southborough and has been a client at COMPAID's Resource Centre for the last three years, said: *"I was thrilled to meet the Mayor. She was really friendly and we had a long chat about my painting. I really like coming to COMPAID and I've got a lot of friends here. I'm glad that the Mayor knows more about us now."*

Barry O'Sullivan, fundraising manager at COMPAID Trust, said that the Mayor had heard about COMPAID's plans for the future, which included a 4 kilometre Wheelchair Challenge around Dunorlan Park in September and celebrating the charity's 20th birthday in 2006. *"This is an exciting time for COMPAID. We will be moving to new, temporary premises on site when Pembury Hospital starts its rebuild next Spring and we are looking forward to celebrating our birthday in the same year as Tunbridge Wells has its 400th. Having the Mayor visit COMPAID has been a great privilege for us, the Mayor is a real people person, she is interested in everyone and makes them feel at ease."*



*The Mayor, Councillor Mrs Jennie Paulson-Ellis, chats to Jacqui Culmer at COMPAID's Resource Centre.*

*Member of the National Association of Estate Agents*



Discuss your property requirements with our qualified friendly staff in  
comfortable relaxed surroundings

★ ★ OPEN 7 DAYS A WEEK ★ ★

**16 High Street, Pembury TN2 4NY**

**Tel: 01892 822880 Fax: 01892 825250 email: [pembury@denisebarnes.co.uk](mailto:pembury@denisebarnes.co.uk)**

Also at:     Tunbridge Wells: 01892 527733                      Sevenoaks: 01732 450866  
                 Prestige & Country Homes: 01892 618181        Brenchley: 01892 724000  
                 Residential Lettings: 01732 500400                Tonbridge: 01732 771616



FREE QUOTATION no obligation  
NO JOB TO SMALL!

## Brushworks

■ PAINTERS & DECORATORS  
also a full interior design service

call Ray Lambert:

**01892 824011**



## Steffan Keily

**FOR ALL YOUR FENCING REQUIREMENTS**

All types of fencing supplied and fitted  
Close board, panels, palisade, post & rail, gates

**FREE ESTIMATES    FULLY INSURED**  
**HOME: (PEMBURY) 01892-824048    MOBILE: 07941138060**



---

## JAN'S GARDEN VIEWS

**W**E ARE NOW into AUTUMN, a mellow season, a time of thankfulness for all the good things grown from the soil safely harvested, and stored for us all to benefit. All around are glorious golden and amber tints on foliage, with seed-heads and berries to enhance the garden and feed the ever-hungry birds.

Dahlias and asters continue to delight us with their brilliance, wealth of colour, and are a bonus at this time of year. Fuchsias too with their opulent ballerina skirts dance away until the return of frost.

Now is a good time to collect seeds from the garden as they ripen. The pods should be dry and brown. Small bunches enclosed in brown paper bags and hung upside down will provide plenty of seeds for future plants. You will need to label them.

Sometimes we need to assess our gardens, cast a critical eye over the plants and consider if they have performed well. It is all too easy to make a wrong judgement and plant perennials in the wrong place, so some may need moving. This can be done now while the soil is still warm and the layout still evident.

The ground should be prepared now for planting new evergreens, trees or shrubs. Add well-rotted manure to the soil and a suitable slow-release fertiliser. If it is dry they will need plenty of watering, the foliage as well as the roots. There are often strong winds at this time of year, so staking and tying-in are advisable to all vulnerable plants and new trees. Young shrubs need winter protection with a 2 inch layer of shredded bark, cocoa shell or compost.

Lawns may need some attention. Aerate, scarify and re-seed worn patches or sow seed for new lawns. Protect with cotton to deter hungry birds. Turf can be laid until the end of October.



For your ponds, remember to feed fish now, as live food is becoming scarcer and they need to build up reserves for the winter. Tidy area around the pond and cover with netting to catch falling leaves.

Bulbs are plentiful for choice now and are such a welcome sight in spring after the long winter. Lilies can go in now, with less chance of the bulbs drying out than if they are planted in spring. They benefit from rich soil and semi-shade. Tulips are best planted in November. There are so many wonderful varieties for early and late displays, together with wallflowers and forget-me-nots for an eye-catching display.

The usual autumn jobs await. Cut back the spent stems and foliage of perennials that have finished flowering. Tidy beds and borders of spent annuals and falling leaves and prepare them for spring displays. Bring in frost tender plants. Dry and store dahlia tubers and gladioli corms.

Keep a watch for frost and beware of squirrels and mice that like to make a meal of small bulbs!

Happy Gardening  
**Jan Davies**

---

## MY PLOT

**W** E ALLOTMENTEERS were so relieved when it finally rained in mid July. At long last my runner beans might stand a chance because my once-a-day splashes with a watering can simply weren't enough. They were very behind – everyone else's were in flower and about to start cropping; mine were at three leaves with no buds in sight. But there was method in my madness . . . By delaying them, I figured they would peak in September when I was back from holiday, rather than in August when they would go to waste. Sounded like a good plan; I'm full of good plans. Who am I trying to kid? It wasn't planned at all!

This was my third set of beans that I was nurturing – the first were grown in my greenhouse in March and planted out at the end of May: too cold to grow on and finally just gave up the ghost. The second crop (ground now warm) was planted direct in the soil: all grew: all got eaten by slugs. The third crop was bought from a nursery – already three leaves tall . . . Anyway, it worked and I am now a start-your-runners-off-in-July convert.

I planted row after row of onions, none of which grew but I succeeded with carrots for the first time. No parsnips but brilliant peas; pathetic courgettes but amazing plums; asparagus gone but tons of blackcurrants and blackberries. Thus it was a mixed summer.

Also, I grew the most fantastic crop of horse tails in living memory. I had three plots completely covered in the stuff. I don't know if it's climate-related, but there was more of it in more places than there ever was before. I am now waging chemical warfare on it with a product called Root Out. The box claims it can do the job and I've reached the stage when I'll try anything. Blow organic principals – this is an emergency. My success will be judged by whether I've turfed the lot by next year.

**Caroline**

---

## MAKE IT A DATE

### **Pembury Village Hall, Tuesdays from 13 September**

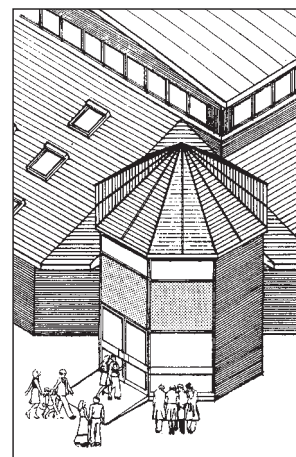
Pembury's own coffee shop and village market returns at 9.30am on 13 September after the summer break.

Over the last year we have been delighted with the growing numbers attending on a Tuesday morning, everyone seems to enjoy having a chat and a cuppa. Old and young come to meet and make friends, buy the wonderful gifts, cards, bric-a-brac and of course the home-made cakes, bargain groceries and the best priced vegetables and fruit available. By the time we re-open all our local fruit should be in plentiful supply and local seasonal vegetables come in just picked.

Several wonderful local groups help man the kitchen and market on different weeks but anyone or group can ask for a stall on a regular or occasional basis. All you need to do is ring up and ask. You might be a charity or someone having a clear out. The table fee is very reasonable and goes into the pot for hall funds. Last year we made almost £1,200 towards maintenance and running costs.

We all enjoy doing it – love the company – and hope to see you there.

Contact: **Evelyn Fiddimore**: 518277 or **Sue Boreham**: 824385



# PEMBURY DENTAL SURGERY



**Nelis du Plessis** B.Ch.D. (Pret)

67 Hastings Road

Pembury

Tunbridge Wells

Kent TN2 4JS

Tel: (01892) 823044

**Committed to  
Quality Dentistry**

- **Accounts Preparation**
- **Personal & Company Taxation**
- **Book-keeping & Payroll**
- **Business & Tax Advice**



APEX ACCOUNTANCY OFFER A FIRST CLASS SERVICE FOR ALL OF YOUR ACCOUNTING AND TAX REQUIREMENTS. CALL NOW TO FIND OUT ABOUT OUR FIXED FEES, EXCELLENT SERVICE AND HOW WE CAN HELP YOU.

Tel: 01892 835738 or 07736 938411

Email: [info@apexaccountancy.co.uk](mailto:info@apexaccountancy.co.uk)

Website: [www.apexaccountancy.co.uk](http://www.apexaccountancy.co.uk)

**Dawn Hodgson** MSSCh MBChA  
**Chiropodist**

- Professional Advice and Friendly Care
- Diabetic Assessment & Maintenance
- Verruca Treatment, Natural Remedies or Chemical
- Ingrowing Toenail Care
- Treatment for Fungal Infections
- Day and Evening appointments available



**67 Hastings Road, Pembury**

**Tel: 07761 583 756**

**01892 824916**

Full range of  
Footcare products,  
including 100% Natural  
and Diabetic Friendly

Discounts for over  
over 70s

HSA 50% refund available



---

## YOUR CLERK REPORTS . . .

**T**HE DIFFICULTY with the Clerk's report is knowing what could interest you out of the great variety of topics addressed by your Parish Council. I have therefore selected a few items of interest and information not appearing elsewhere in this edition of the News.

**Street Lighting** – Parish lights are those in Henwood Green Road (south of Romford Road), Romford Road, Woodside Road and Kings Toll Road. We do all we can in practical terms to maintain those lights. All other lights (except the A21) are the responsibility of the Kent County Council (KCC). The A21 being a trunk road, is managed by a Highways Agency contractor. If you see a problem, you can report it in the following ways:

Parish Lights	01892 823193 or pemburypc@pembury.org
KCC Lights	0800 212 571
A 21	01634 385500

**Highways** – The management of Kent Highways has recently changed and the Parish Council will be working with the new KCC team on the more fundamental issues. As I write the final “gateway” around Pembury is about to take shape at Woodside. If you are aware of a burning issue regarding highways please let me or one of your Councillors have the details. Alternatively, you can telephone Kent Highways direct on 0845 303 2500 if there is a maintenance problem.

**Planning** – Although we have no powers Pembury Parish Council is a Statutory Consultee and spends a noticeable proportion of time on planning. In the first six months of 2005 the council has considered over 60 applications ranging from simple conservatories to complete new housing developments. The Parish Council recognises there must be change but it also has to consider the ‘character’ of the village. One recent case which is a good example

and needed careful consideration was a fairly large new development proposed in the top of the village in the Conservation Area. The plans have gone through several stages with significant improvement. At this point the outcome is not known.

**Proposed new pavilion in the Recreation Ground** – As everyone knows the present pavilion is in an appalling state. Early last year the Parish Council agreed to pursue the rebuilding and substantial improvement of this in partnership with Pembury Junior Football Club who are bidding for the large external sports grants essential to funding this. The Council has commissioned the necessary architects’ drawings and has now obtained planning approval for the replacement building. Much now depends upon the success of the football club’s grant applications.

I should add here the rest of the Recreation Ground is not forgotten. The Parish Council realises the need to upgrade the whole of this important local facility and has engaged a consultant to prepare a long term improvement plan. There will then be wide public consultation before this goes to a more detailed stage.

**Pembury Hospital** – The Parish Council maintains regular contact with the team running the project. It is, after all, the biggest development Pembury is likely to see for many years. So far there seem to be no surprises and it appears to be running to time.

This is only a smattering of Council’s wide range of business – perhaps you would like to be more involved? At present we have two casual vacancies for Parish Councillors. If you are interested please contact me no later than 12noon Friday 23 September 2005. Why not spread your wings and help lift Pembury to greater heights?

**Barbara Russell**  
Clerk to Pembury Parish Council

# MAKE THE RIGHT MOVE WITH YOUR MORTGAGE

St. James's Place provides a comprehensive mortgage service designed to suit your own individual requirements offering:

- ❑ *Remortgages and Buy-To-Lets*
- ❑ *Exclusive Schemes*
- ❑ *Written Quotations*
- ❑ *Access to most of UK's Lenders*
- ❑ *A comprehensive range of products for first time/next time buyers*

To make the right move with your mortgage call:

**01892 823206 or 0207 638 2400**

Or write to:

**MICHAEL THEOBALD**

**ST. JAMES'S PLACE, 3 MOORGATE PLACE, LONDON EC2R 6EA**

E-mail: michael.theobald@sjpp.co.uk



**ST. JAMES'S PLACE**  
PARTNERSHIP

*The St. James's Place Group stands behind and guarantees the advice given by members of the St. James's Place Partnership when recommending any of the products and services provided by companies in the St. James's Place Group.*

YOUR HOME IS AT RISK IF YOU FAIL TO KEEP UP REPAYMENTS ON A MORTGAGE OR OTHER LOAN SECURED ON IT.

## HEAD-MASTERS HAIR & BEAUTY UNISEX SALON

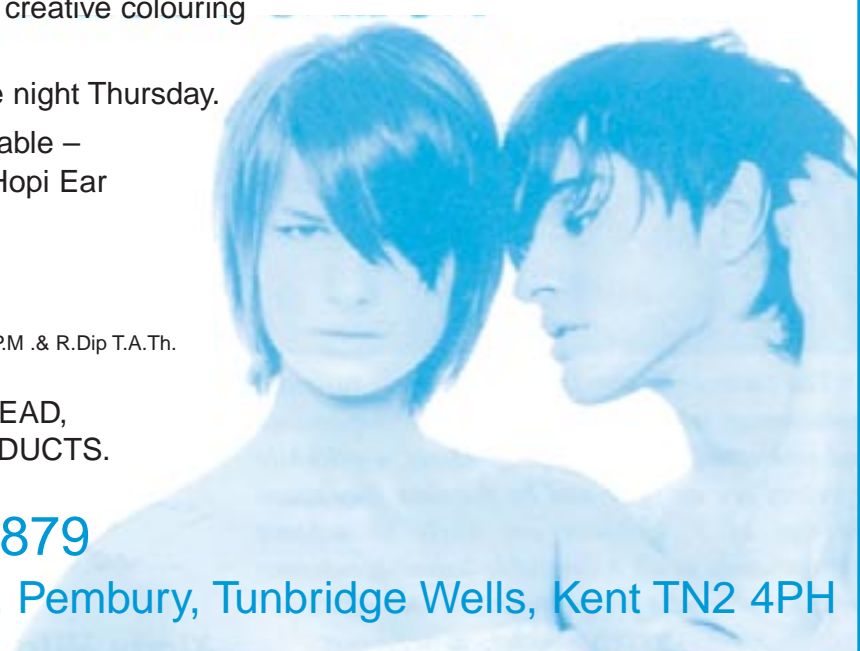
- Specialist in cutting and creative colouring to suit you.
- Open Tues to Sat – Late night Thursday.
- Beauty Treatments available – Massage, Reflexology, Hopi Ear Candles and Waxing.

Our Therapist is  
FIONA FENNELL Dip.ITEZ A.P.M. & R.Dip T.A.Th.

TIGI® BEDHEAD,  
CATWALK PRODUCTS.

**Tel: 01892 822879**

25-27 High Street, Pembury, Tunbridge Wells, Kent TN2 4PH



## GENUINE FREE RANGE EGGS

ALL HENS GIVEN FULL DAYLIGHT ACCESS TO PASTURE.

FULL RANGE OF SIZES AVAILABLE.

IT'S THE FRESHNESS THAT MAKES THE DIFFERENCE!

**LITTLE HAWKWELL FARM  
MAIDSTONE ROAD  
PEMBURY**

(top of Colts Hill)

**Telephone: 01892 824184**



## ROSIE'S RECIPES

**B**Y THE TIME you read this column I will have been married just for a very short while. So I have hurriedly prepared some tasty recipes in time for Bonfire Night.

### CARROT, APPLE AND CASHEW NUT SOUP

#### Serves 6

1lb (450g) carrots  
1 large onion  
1 small potato  
1 large cooking apple  
2oz (50g) butter or margarine  
2pt (1.2l) vegetable stock  
2oz (50g) broken cashew nuts  
Salt & pepper to taste

Roughly chop the vegetables and apple. Melt the butter in a large saucepan and sauté the prepared vegetables for five minutes, stirring occasionally. Add the remaining ingredients, bring to the boil, cover and simmer for 30 minutes until the vegetables are just tender. Allow to cool before blending in a liquidizer. Reheat to serving temperature and adjust seasoning to taste.

Children will particularly like this next recipe.

### POTATO WEDGES WITH TUNA



#### Serves 4

3 large baking potatoes  
3tsp olive oil  
1 leek, sliced  
200g can tuna in brine, drained

2 x 400g cans chopped tomatoes with chilli in tomato juice

Preheat the oven to 220°C/Gas 7/fan oven 200°C. Cut the potatoes into wedges and put in a roasting tin. Drizzle over two tablespoons of the oil, making sure all the potatoes are covered. Bake for 30 minutes until crispy on the outside and soft inside.

Meanwhile, heat the remaining oil in a pan and fry the leek until softened. Tip in the tuna and the chilli tomatoes, breaking the tuna down until well combined with the tomatoes. Cook for a few minutes until hot. Season and spoon over the potatoes in the roasting tin, mixing gently. Serve immediately.

### BONFIRE CAKE

To make 5 November really special this cake will impress anybody who comes round for tea. This is much easier to make than you think.

#### Serves 10-12

*Ingredients for the cake:*

6oz (175g) butter or margarine  
6oz (175g) caster sugar  
3 large eggs  
5oz (150g) self-raising flour  
1 tsp (5ml) baking powder  
1oz (25g) Bournville Cocoa  
1 small orange  
Orange food colouring  
2 pint (1.2 litre) ovenproof basin, greased  
Baking tray

Cream the fat and sugar until light in colour and texture. Gradually add the eggs, then fold in the flour and baking powder sifted together. In a separate mixing bowl,



*continued on page 34*

---

## ROSIE'S RECIPES *continued*

blend the cocoa to a paste with a little boiling water, then add half the cake mixture to it and mix well. Finely grate the orange rind and add it to the remaining mixture with enough strained colouring if liked. Spoon the two mixtures alternately into the basin then swirl through only once so that they remain separate. Smooth the top and hollow out the centre slightly. Stand the cake on a baking tray and cook in a moderate oven (180°C, 350°F, Gas 4) for 1-1½ hours until cooked through. When cooked, a warm skewer inserted into the middle of the cake should come out cleanly. Turn out and cool on a wire tray.

### *Ingredients for decoration:*

12 oz (350g) plain butter icing  
Yellow and red food colouring  
12-16 Chocolate Flakes from Family Pack  
Guy's head, made from card or marzipan (optional)  
Divide the butter icing in half and colour

one portion bright yellow and the other a good red. It does not matter if the icing gets a little soft. Spread nice thick lines of alternate colours of butter icing, from the top to the bottom of the turned-out cake, covering it completely. Dip a paint brush into neat food colouring, brush short strokes at irregular intervals over the icing to highlight the 'flames'. Alternatively, for speed and simplicity, cover the cake completely with just yellow butter icing. Cut the Flakes into thinner strips with a sharp knife. Press the pieces into the icing, letting the brilliant colours show through. Sprinkle the Flake crumbs over the top. Make the guy's head out of card, drawing on the features, and place it in the centre of the cake. Lift the cake on to a plate or board.

Don't forget the village fireworks night on Friday 4 November in the Recreation Ground.

**Rosie Bass** (formerly Latter)

---

## LOW FAT CHRISTMAS PUDDING

Although Christmas is some months off, Christmas pudding is traditionally made some time before so that the flavour can mature into that rich, full-bodied experience that we all love.

This, however, is a 'lite' version, so you can tuck in without counting the calories!

1 teaspoon sunflower oil  
6oz dried apricots (chopped)  
4oz raisins  
4oz sultanas  
Grated zest and juice of two oranges  
3 desert apples cored and grated  
2oz brown sugar

2 eggs  
2 tsp cinnamon  
1 tsp nutmeg  
8oz fresh brown breadcrumbs  
2 tbs brandy



Grease pudding basins with the oil.

Place all the ingredients into a basin and mix well.

Steam the pudding for at least three hours and leave to stand

Steam for at least 1 hour before serving.

**Janet Ditchett**

---

## FOR YOUR DIARY

**Village Coffee Morning** – Village Hall Tuesdays 9.30am – 12 noon, full market last Tuesday of the month same times. **WRVS Lunch Club** – every Wednesday at 11.45am in the Pembury Village Hall during the school term time. **Community Warden Surgeries** – fortnightly – 1pm Camden Court – Contact 07813 694138

### September

- 18 Pepenbury (previously Larkfield): 'Taste of Kent' Autumn Fair – details 822168
- 24 Barn Dance: British Heart Foundation fundraiser – Village Hall – 7.30pm – Tickets 824250
- 24 Hospice in the Weald: Silver Anniversary Party – Hop Farm, Paddock Wood 7.30pm – Tickets and details from Fiona Parry 820508

### October

- 1 Pembury Footpath Walkers – Stonecourt Lane – 2.15pm
- 1 Pembury Farmers' Market – Village Green – 9am to 1pm
- 5 St Peter's Mothers' Union: Wild Flowers of Kent – Upper Church Meeting Room – 8pm
- 6 Pembury Afternoon WI: History of the Apple – Village Hall – 2pm
- 7 Pembury Evening WI: The History of Cheese – Village Hall – 7.45pm
- 10 Parish Council Meeting – Village Hall – 8pm
- 10 Floral Art – Village Hall – 8pm
- 10 St Peter's Photographic Club: Speaker TBA – Upper Church Meeting Room – 8pm
- 13 Pembury Gardeners: General Gardening talk, Leonard Stebbings – Catholic Hall – 7.45pm
- 15 Pembury School Association: Adult Disco – Pembury School – 7.30pm
- 20 Pembury Society AGM plus talk on Peru – Village Hall – 7.45 for 8pm
- 24 St Peter's Photographic Club: Holiday prints & slides – Upper Church Meeting Room – 8pm

### November

- 2 Pembury Library: Talk on 'Brewing, Ballet and Bedpans' by Mrs Coxon-Taylor – Library 11am. Details see 'Snippets'
- 3 Pembury Afternoon WI: Annual General Meeting – Village Hall – 2pm
- 3 Hospice in the Weald: Firewalk and Icewalk – 6.30pm – details Tanya Ingham 820533
- 4 VILLAGE FIREWORKS – Lower Green Recreation Ground – 7.30pm
- 4 Pembury Evening WI: Annual Members' meeting – Village Hall – 7.45pm
- 5 Pembury Farmers' Market – Village Green – 9 am to 1pm
- 5 RNLI (Lifeboat) Autumn Fayre – Catholic Hall – 10am to 12 noon
- 5 Pembury Footpath Walkers – Camden car park – 2.15pm
- 7 Hospice in the Weald: Christmas Market – Hospice – 11am to 4pm
- 7 Parish Council Meeting – Village Hall – 8pm
- 7 St Peter's Photographic Club: Open Competition – Upper Church Meeting Room – 8pm
- 9 St Peter's Mothers' Union: Care of Young Families – Upper Church Meeting Room – 8pm
- 12 Pembury Players' Social: Open to all – Village Hall – 7.30pm
- 13 Remembrance Sunday – Upper Church – 10.50am
- 14 Floral Art – Village Hall – 8pm
- 19 St Peter's Autumn Fayre – Upper Church – 10am
- 21 St Peter's Photographic Club: Table Top – Upper Church Meeting Room – 8pm
- 26 Compaidd: 'Night At The Flicks' – Village Hall – 6.30 for 7pm – or details see page 13
- 27 Taizé Service – Upper Church – 6.30pm

### December

- 1 Pembury Afternoon WI: Christmas Party – Village Hall – 2pm
- 2 Pembury Evening WI: Christmas Craft – Village Hall – 7.45pm
- 3 Pembury Farmers' Market – Village Green – 9 am to 1pm
- 3 Pembury Footpath Walkers – Stonecourt Lane – 2.15pm
- 5 Parish Council Meeting – Village Hall – 8pm
- 5 St Peter's Photographic Club: Match-A-Slide – Upper Church Meeting Room – 8pm
- 7 St Peter's Mothers' Union: Christmas Supper – Upper Church Meeting Room – 8pm
- 8 Hospice in the Weald: 'Light Up a Life' service – Hospice – 6.30pm
- 12 Floral Art – Village Hall – 8pm
- 21 Pepenbury Carol Service – Upper Church – 2.30pm – All welcome



## CRIME IN PEMBURY

THE CRIME figures shown below are for the months of April, May and June and thankfully show a welcome drop of nearly 23% on the previous quarter. However, we must not get lulled into a sense of false security by feeling comfortable with an overall figure of 57, which is still far too high.

The most persistent and annoying statistic is the one of criminal damage which happens mainly late in the evening and I am sure that the same few people are responsible. Twice in recent months we have been fortunate to prevent car theft or damage by interrupting the would-be perpetrators before the crime was committed. However, our ambition is to catch them next time and hand them over.

In the last edition I was very critical of standards set by some parents and their offspring and I make no apologies for that. But the vast majority of our youngsters are good fun, energetic, constructive and contribute to the future fabric of our village.

My criticism this time is aimed at the magistrates and judges who have the final say after the criminal or offender comes to court. I am sure there are times when, like me, you wonder which planet those who pass sentence come from. There must be many police officers who, having spent hours establishing their case, basically on our behalf, then suffer the anger and frustration of seeing the person with the final say make the most awful decision and undo all the hard work. It is time that judges and magistrates were made answerable on a regular basis to the authority in which they were sitting.

Sadly, summer moves quickly away so exercise caution, lock your sheds and garages and leave nothing outside to go walkies. Our target next quarter is forty and below.

Be Vigilant

**Hugh Boorman**

MONTH	Assault	Burglary Dwelling	Burglary Other	Criminal Damage	Fraud and Deception	Theft from Motor Vehicle	Theft of Motor Vehicle	Theft Offences	TOTAL
<b>April 2005</b>	3	1	3	5	1	1	2	5	<b>21</b>
<b>May 2005</b>	1	1	1	2	1	3	1	1	<b>11</b>
<b>June 2005</b>	8		1	7	2	2	1	4	<b>25</b>
<b>TOTAL</b>	<b>12</b>	<b>2</b>	<b>5</b>	<b>14</b>	<b>4</b>	<b>6</b>	<b>4</b>	<b>10</b>	<b>57</b>
<b>ROAD</b>									
Bellfield Road				1				1	<b>2</b>
Bulls Place					1			1	<b>2</b>
Hastings Road	2		1	2			1		<b>6</b>
Henwood Green Road	1						2		<b>3</b>
Henwoods Mount			1	2					<b>3</b>
Highfield Close							1		<b>1</b>
High Street	6			4	2			1	<b>13</b>
Knights Close		1							<b>1</b>
Lower Green Road		1		2					<b>3</b>
Romford Road			1			1		1	<b>3</b>
Tonbridge Road	2		2	3	1	5		5	<b>18</b>
Woodhill Park	1							1	<b>2</b>
<b>TOTAL</b>	<b>12</b>	<b>2</b>	<b>5</b>	<b>14</b>	<b>4</b>	<b>6</b>	<b>4</b>	<b>10</b>	<b>57</b>

## MAKING CONNEXIONS – INFORMATION AND ADVICE FOR 13-19 YEARS OLDS

**C**ONNEXIONS KENT & MEDWAY provides free impartial and confidential advice, guidance, support and personal development services to all 13-19 year olds whatever their background and needs and those up to the age of 25 years who have learning difficulties and disabilities. They can also provide a service to parents and carers who need help on how to advise their children on qualifications, training and employment.

The service is delivered by specially trained Personal Advisers who are based in schools, colleges, at Connexions Access Points, and in a range of community settings. As well as guidance on careers and learning, Personal Advisers can help young people with issues such as jobs, training, housing, money, relationships and health. They can also help them develop their talents and interests, for example, through volunteering, community projects, the arts, sport or other local leisure activities.

The nearest Connexions Access Point can be found at Lansdowne Mews, 196 High Street, Tonbridge TN9 1HQ or call on tel: 01732 361257. Alternatively, for more information about Connexions Kent & Medway visit their website on [www.connexionskentandmedway.co.uk](http://www.connexionskentandmedway.co.uk). Young people can send a query to a P.A. through the Connexions Kent & Medway website or the Connexions Direct service [www.connexions-direct.com](http://www.connexions-direct.com)

Connexions Direct is a phone and web based service that offers quick and easy access to expert advice.

- You can talk in complete confidence to a Personal Advisor any time between 8am and 2am: call **0808 0013219**
- Send an email via the website at <http://www.connexions-direct.com>
- Text Connexions Direct on **07766 413219** (*normal charges apply*)

## CHURCH TIMES

### ST. PETER'S CHURCH SERVICES

#### Upper Church

8.00am Holy Communion

9.45am The Parish

Eucharist  
and Junior Church

10.00am Holy  
Communion  
(Wednesdays)

#### Old Church

11.30am Matins (except  
first Sunday, Holy  
Communion)

Evening services as  
advertised on Church  
noticeboards

### CATHOLIC CHAPEL OF ST. ANSELM – PEMBURY

Sunday Mass 10.30am

Holy Days – Vigil Mass  
7.30pm

Confessions:  
Sunday 10.15am

Weekday Service:  
Wednesday – Mass 7pm

### PEMBURY BAPTIST CHURCH

We praise God and hear his word on Sunday at 10am. Children's and young peoples' group meet as well. Evening services as advertised.

We have many activities during the week for mums, toddlers, young people and senior citizens. Ring the church office 825590 for details.

---

## YOUR REPRESENTATIVES

### COUNTY COUNCIL

Kevin Lynes, 5 Downs Cottages, The Down, Lamberhurst, Kent TN3 8EX. Tel: 890922

### BOROUGH COUNCIL

Paul Barrington-King, 22 The Coppice, TN2 4EY. Tel: 825144

David Mills, 125 Ridgeway, TN2 4ET. Tel: 825577

Tom Symondson, 50 Henwood Green Road, TN2 4LH. Tel: 07985 142965

### PARISH COUNCIL



Cllr David Coleman  
22 Ridgeway TN2 4ER  
Tel: 823402  
**Chairman of Parish Council**



Cllr Steve Morton  
2 The Coppice TN2 4EY  
Tel: 824938  
**Vice Chairman of Parish Council**  
*Chairman, Finance, Audit & Personnel  
Working Group, Chairman of Planning  
& Highways Working Group*



Cllr Jennifer Ayres  
21 High Street  
TN2 4PH  
Tel: 824922



Cllr June Crowhurst,  
44 Elmhurst Avenue TN2 4DA  
Tel: 824873  
*Chairman, Amenities, Christmas  
Lights and Pembury in Bloom*



Cllr Keith Farley  
3 Beagles Wood Road  
TN2 4HX  
Tel: 823440



Cllr Leslie Gregory  
47 High Street TN2 4PH  
Tel: 822343  
*Chairman, Public Relations  
Working Group*



Cllr Alison Morton  
2 The Coppice TN2 4EY  
Tel: 824938  
*Chairman, Pembury Village News  
Editorial Working Group*



Cllr Sally Osborn  
34 Canterbury Road  
TN2 4JT. Tel: 822726  
*Chairman, Allotments, Burials,  
Environemt & Environmental  
Improvement Working Group*



Cllr Roger Parrett  
27 Canterbury Road  
TN2 4JT  
Tel: 825948



Cllr Norman Starkey  
71 Henwood Green Road  
TN2 4LW  
Tel: 823227



**Clerk to the Pembury Parish  
Council**  
Barbara Russell, 6 The Grove  
TN2 4BU. Tel: 823193  
Email: [pemburypc@pembury.org](mailto:pemburypc@pembury.org)



**Deputy Clerk to the Pembury  
Parish Council**  
Richard Parsons, 6 The Grove  
TN2 4BU. Tel: 823193  
Email: [pemburydc@pembury.org](mailto:pemburydc@pembury.org)



# VILLAGE ORGANISATIONS

## AGE CONCERN

Mrs Sandra Springett. Tel.: 522591

## ALZHEIMERS DISEASE SOCIETY

Simon Rooksby, Pineview Day Hospital  
Pembury Hospital. Tel: 823535, Ext 3515

## BLACK & WHITE MARCHING MILITAIRE

Tel: Louise 823097

## BOWLS CLUB

Len Birnie. Tel: 01892 681222

## CATHOLIC CHURCH

Deacon Bill Eason. Tel: 824133

## COMPAID TRUST

Computer Aid for Disabled People. Tel: 824060  
Transport for Special Needs. Tel: 823488

## CONSERVATIVE PARTY

Terry Cload, 56 Herons Way. Tel: 823966

## CRICKET CLUB

Hon. Secretary: Andy Dawes, 17 Cornford Park, Pembury.  
Tel: 822862

## FRIENDS OF PEMBURY HOSPITAL

c/o Pembury Hospital. Tel: 823535

## FRIENDS OF PEMBURY PARISH CHURCH

Chairman: Mrs S. Clarke, Little Stanton,  
Romford Road. Tel: 823932

## GUIDES, BROWNIES AND RAINBOWS

Mrs M. Allan, 9 Henwood Green Road. Tel: 822373

## HEADWAY

Libby Slattery. Tel: 823120

## HOSPICE IN THE WEALD

Maidstone Road. Tel: 820500

## KENT COLLEGE

Headmistress: Ann Upton. Tel: 822006

## KENT COLLEGE PREP SCHOOL & NURSERY

Headmistress: Anne Lawson. Tel: 820204

## LABOUR PARTY

Dave & Sally Osborn, 34 Canterbury Rd. Tel: 822726

## LIBERAL DEMOCRATIC PARTY

David Mills. Tel: 825577

## LITTLE RASCALS (formerly 'Meet-a-Mum')

c/o PBC Office. Tel: 825590

## NATIONAL CHILDBIRTH TRUST

Co-ordinator: Helen Dunkerley. Tel: 822529

## NATIONAL FEDERATION OF THE BLIND, UK

Michael Coggles. Tel: 822705

## NEIGHBOURHOOD WATCH

Gill Pavely. Tel: 822605

## PEMBURY ATHLETIC (YOUTH) FOOTBALL CLUB

David Gow. Tel: 824119

## PEMBURY BAPTIST CHURCH

Assoc Pastor Wayne Alexander  
Church Office. Tel: 825590

## PEMBURY BRIDGE CLUB

Geoff Plummer. Tel: 824652

## PEMBURY COMMUNITY WARDEN

Tom Younger. Tel: 07813 694138

## PEMBURY COMMUNITY WORKING PARTNERSHIP

Richard Parsons. Tel: 823193

## PEMBURY F.C. SATURDAY

Mick Waterman, 26 The Coppice. Tel. 824137

## PEMBURY F.C. SUNDAY

Phil Craxton, 34 Woodhill Park. Tel: 823928

## PEMBURY FOOTPATH WALKERS

N. & K. Franklin, 11 The Meadow. Tel:  
823212

## PEMBURY GARDENERS

Ann Purton. Tel: 824223

## PEMBURY PHOENIX TWIRLERS

Dave or Chris Brett. Tel: 824233

## PEMBURY PLAYERS

Chairman: John Hawker. Tel: 824327

## PEMBURY PRE-SCHOOL NURSERY

Mrs C. Hughes. Tel: 668514

## PEMBURY SCHOOL

Headteacher – Mrs C. Thewlis. Tel: 822259

## PEMBURY SCHOOL ASSOCIATION

Tracey Perrett. Tel: 823334

## PEMBURY SCHOOL HOUSE NURSERY

Teacher in charge: Rosemary Rich. Tel: 825580

## PEMBURY SEQUENCE DANCE CLUB

Secretary: Mrs Marion Warren. Tel: 547617

## PEMBURY SHORT MAT BOWLING CLUB

Arthur Storey. Tel: 822509

## PEMBURY SOCIETY

Steve Morton. Tel: 824938

## PEMBURY TENNIS CLUB

Mrs S. Smith, 2 Ridgeway. Tel: 822405

## PEMBURY UPPER AND OLD CHURCH

Revd. Heather Hughes. Tel: 824761

## PEMBURY VILLAGE MARKET

Sue Boreham Tel: 824385

Eve Fiddimore Tel: 518277

## PEMBURY (formerly Larkfield)

Principal: Mr Roger Gibson, Cornford Lane. Tel: 822168

## ROTARY CLUB OF SOUTHBOROUGH & PEMBURY

Secretary: Mike Raper. Tel: 01892 520171

## ROYAL NATIONAL LIFEBOAT INSTITUTION

Peter Chartres, 54 Woodhill Park. Tel: 823759

## SANDRA'S HOUSE

Pre-School Nursery, Mrs S. Toogood, Queens Folly,  
64 Lower Green Road. Tel: 824252

## SCOUTS, CUBS AND BEAVERS

Mike Cartwright, 16 Cornford Park, Pembury.  
Tel: 823235

## SCOUT & GUIDE HQ MANAGEMENT TEAM

Mike Cartwright, 16 Cornford Park, Pembury.  
Tel: 823235 and Moira Allan, 9 Henwood Green Road.  
Tel: 822373

## ST. PETER'S MOTHERS' UNION

Secretary: Mrs M. Adams. Tel: 822769

## ST. PETER'S PHOTOGRAPHIC CLUB

Events Secretary, Carol Wakeford. Tel: 822030

## TABLE TENNIS CLUB.

John Burleton. Tel: 823250

## TREE WARDEN.

Caroline Mazzey Tel: 822493

## TUNBRIDGE WELLS ACCESS GROUP

Gill Pavely Tel: 822605

## TUNBRIDGE WELLS & DISTRICT VICTIM SUPPORT

SCHEME. Tel: 513969

## VILLAGE HALL

Manager (bookings): Rachel Windus.

Tel: 822837

## WOMEN'S INSTITUTES

Afternoon: Mrs Edna Morris. Tel: 822267

Evening: Mrs Elizabeth Bellchamber. Tel. 824969

## WRVS LUNCH CLUB

Contact: Mrs Amanda Everett. Tel: 823280

## YMCA

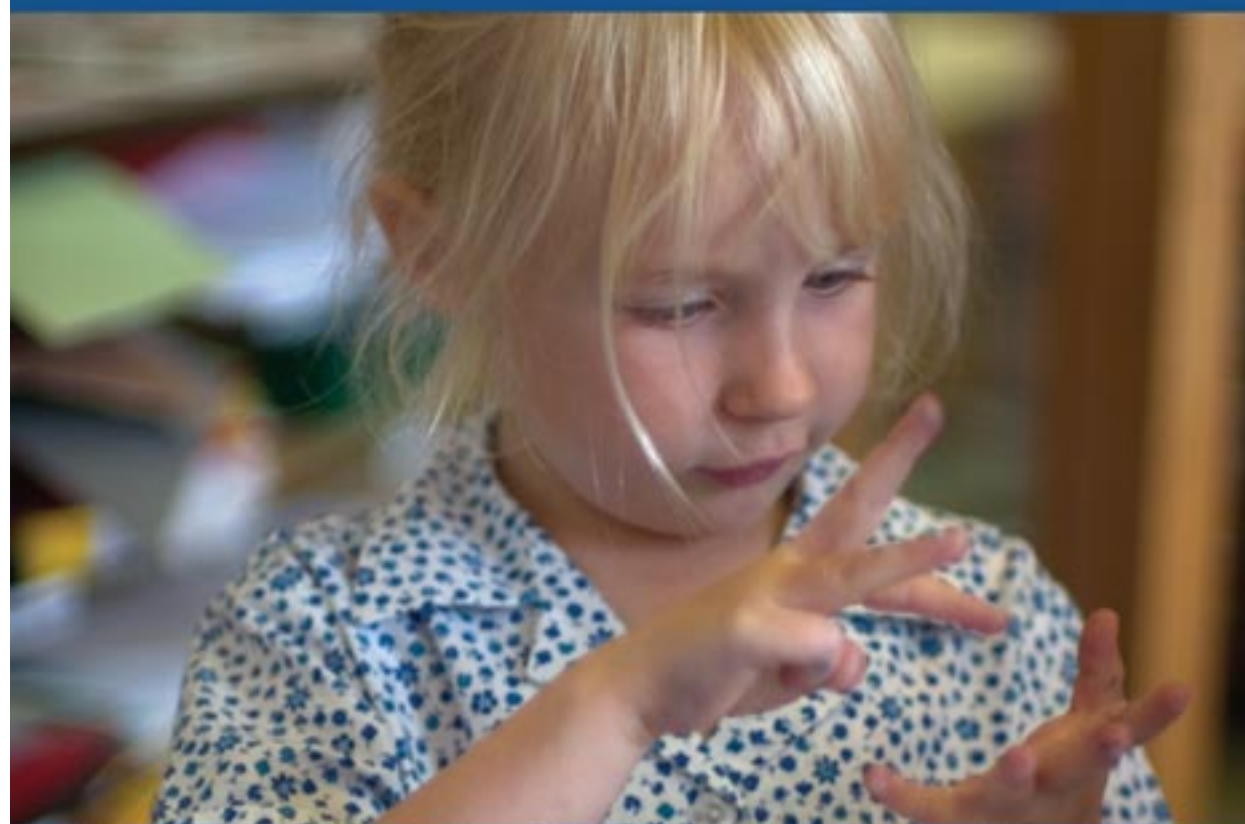
Simon Stanley. Tel: 534444



**Kent College Preparatory School, Pembury**

A balanced foundation for future success

## Happiness + Confidence = Success



We believe that a happy, confident child is a successful one and our girls love coming to school. High academic standards, excellent SATs results and preparation for grammar and independent senior schools are at the heart of what we do, but we never forget that there is more to childhood and learning than examinations.

If you would like to know more about our approach to developing happy, confident and successful pupils, please contact Mrs Jones on 01892 820204 or visit our website at [www.kent-college.co.uk](http://www.kent-college.co.uk)

"A happy and secure learning environment ... teaching is very good overall and often excellent enabling pupils to achieve very well ... excellent wide-ranging programme of extra-curricular activities ... very high levels of pastoral care."

**Independent Schools Inspectorate Report, 2004**

Kent College Preparatory School is an independent school for girls aged 3-11.

Nursery class from age 3 with flexible attendance.

Old Church Road, Pembury, Tunbridge Wells TN2 4AX