

# PEMBURY VILLAGE NEWS



ISSUE 120  
WINTER 2004

# CONTENTS

Working Together For Pembury	3 & 5	Jan's Garden	23
Mozambique Revisited	7	Pembury Evening WI – October	24
Lower Green Post Office To Close – The End of an Era	9	St Anselms Steps Up	24
Snow White And The Seven Dwarfs Are Coming To Pembury	9	Pembury In The Past	25
Pembury Millennium Book Takes Its Place In History	11	Snippets	27
“Get A Life!”	11	Pembury Darby And Joan Club	27
Pembury Small Business Exhibition	13	Recipe Corner	28
Pembury's Anti Social Behaviour Dispersal Order	15	Machu Picchu Or Bust!	30
Seasonal Topics From West Kent Police Community Crime Reduction Dept	16	Crime in Pembury	33
Dragon Boats	17	Pembury In China	34
News Flash – A Posh Plot!	19	For Your Diary	35
News From Hospice In The Weald	19	Church Services Over The Christmas Period	36
Pembury Goes To Lompret!	20 & 21	Pembury Footpath Walkers	37
		Church Times	37
		Your Representatives	38
		Village Organisations	39

Cover photograph by Steve Morton

## *Editorial Working Group:*

Alison Morton (Editor), Paul Barrington-King,  
Leslie Gregory and Ann Owen

*Please note: The Editor's decision is final on whether or not to publish any item submitted. The Editor reserves the right to edit (that is to cut, précis, alter, correct grammar and spelling) any item published.*

## PEMBURY VILLAGE NEWS

Editor: Mrs Alison Morton  
2 The Coppice, Pembury TN2 4EY  
Tel: 824938 Fax: 825134  
Distribution enquiries: Parish Clerk 823193  
**Email: [pvn@pembury.org](mailto:pvn@pembury.org)**  
**Website: [www.pembury.org](http://www.pembury.org)**

Pembury Village News is published four times a year by the Parish Council, but the views expressed in the magazine do not necessarily represent official council opinion or policy.

Typeset and printed by  
TMH, Tunbridge Wells.



## WORKING TOGETHER FOR PEMBURY

**I**N THE LAST three months, Pembury has experienced serious public order problems – theft and public disturbance, nuisance and threatening behaviour. Widespread concern was expressed by residents and councillors at Parish, Borough and County levels, and rumours were rife.

I contacted Mike Fuller, Chief Constable of Kent Police, who had made antisocial behaviour a key issue in his first few months in the County. I explained how shocking it was that in just a couple of weeks, an area such as Pembury could breed such intimidation; and how committed the residents and their elected representatives were to taking back the village from those who would ruin it.

Within days “Operation Excalibur” had come to Pembury. Police presence was massively increased, and within days the village was the subject of the first Dispersal Order in West Kent. This gave police the power to ask any group of two or more persons to disperse and go home, failing which they could be arrested on the spot.



The Dispersal Order, which expired on the last day of October, can be either extended or reinstated should the need arise. Finally, Operation Quest, with a mobile exhibition in the centre of Pembury, saw the police providing door to door advice and support throughout October. There have been worrying moments along the way (one or two local press articles didn't help) but it looks like we're past the worst. Now the whole community needs to rediscover its confidence.

The biggest point made to me by residents throughout this worrying episode has been the need for a visible presence in the village which is why I'm delighted to be able to tell you that Kent County Council has agreed to deploy a Kent Community Warden specifically for

### **COPY FOR NEXT ISSUE**

*Any news items or articles for possible inclusion in the next issue of this magazine must be forwarded to the Editor before*

**1 February 2005.**

*If you use a computer to type your article, it would be extremely helpful if you could send it in on disk or by e-mail. If you do not have a disk, we can supply you with one.*



*Member of the National Association of Estate Agents*



**Discuss your property requirements with our qualified friendly staff in  
comfortable relaxed surroundings**

**★ ★ OPEN 7 DAYS A WEEK ★ ★**

**16 High Street, Pembury TN2 4NY**

**Tel: 01892 822880 Fax: 01892 825250 email: [pembury@denisebarnes.co.uk](mailto:pembury@denisebarnes.co.uk)**

**Also at: Tunbridge Wells: 01892 527733**

**Sevenoaks: 01732 450866**

**Prestige & Country Homes: 01892 618181**

**Brenchley: 01892 724000**

**Tonbridge: 01732 771616**

**Residential Lettings: 01732 500400. Black Cat Financial Services Ltd: 01732 771444**

# **G. F. GROVES**

**Your friendly local builder**

**CARPENTERS  
JOINERS**

**BUILDING  
CONTRACTORS**

**EXTENSIONS/CONVERSIONS/NEW-BUILD**

*PLANNING SERVICE AVAILABLE  
PURPOSE-MADE JOINERY*

**FREE ESTIMATES • FAST SERVICE**

**Telephone (01892) 838619**

## WORKING TOGETHER FOR PEMBURY *continued*

the village. Subject to recruitment and training, Pembury's Warden should start work in the first couple of months of the New Year, and, working with the police and the County Council, will provide home visits and crime prevention advice. Forging links with schools, social services and local residents groups, they will give both a visible deterrent and a friendly face for young and old.

In the meantime, I have asked for one of our neighbouring Wardens to come into Pembury part-time to begin to establish relationships. But this alone won't be enough – everybody needs to play a part if we're to avoid going back to the bad experiences of the last couple of months. That's why I'm looking for volunteers – for "Pembury Champions" who can help me to set up some initiatives to make Pembury strong again:

- Traffic speeds through the village are a common complaint.\* If I can find some volunteers, I'll start up a 'SpeedWatch' group, where villagers monitor speeds and report to Kent Police. I'll pay for the equipment, and the police will provide the training.
- The more residents meet and communicate, the lower the incidence of crime and nuisance. It's been suggested that we establish some residents' groups – they could be specific to your road, or a wider catchment, even the whole village, and I'll need volunteers to coordinate and run these groups.
- There's nothing more certain to bring an area down than litter and graffiti. If anyone will volunteer to set up a group, I'll provide the equipment to get rid of graffiti and collect litter throughout the village. Just a Sunday morning once a month will get the village spotless.
- The "Friends of Pembury Youth" initiative has enabled the Baptist Church to host a thriving Youth Club one evening a week. With extra volunteers, we could run this facility on more evenings during the week. Cath Thewlis has offered to host a "Little Villagers" club at the Primary School. I'll arrange the checks and training for anyone who wants to get involved.



If you'd like to volunteer for any of the above initiatives, I'd be happy to hear from you. Call me at County Hall on 01622 694101 or at home on 01892 890922, or by e-mail to [kevin.lynes@kent.gov.uk](mailto:kevin.lynes@kent.gov.uk).

In addition, you can track the progress of these local initiatives on my website, [www.kevinlynes.com](http://www.kevinlynes.com). That's it for now – I hope to report some more good news next time!

*\*Editor's note: See typical incident on page 11*

**Kevin Lynes**

## P.L.H. DECORATING

Interior - Exterior  
Painting & Decorating

Tel: 01732 770058 / 07941 068717

## Brian V Toogood

CARPETS & VINYLs SUPPLIED & FITTED  
CARPETS & UPHOLSTERY CLEANED



*Stain protection treatment for carpets and upholstery*

FOR PERSONAL & PROFESSIONAL SERVICE **TEL: PEMBURY 824252**



OVER 28 YEARS' experience.  
EST 1977

Any make of carpet available.  
Pattern books brought to your home.  
Carpet and upholstery cleaning, also rugs  
and orientals.  
Carpets adapted and repaired.

## JULIE ROBINSON

IHBC, BABTAC

Professional Beauty Therapist



FULL RANGE OF PROFESSIONAL BEAUTY TREATMENTS AVAILABLE  
WITHIN COMFORTABLE AND PRIVATE SURROUNDINGS



SPECIALISED DERMALOGICA FACIALS \* MAVALA MANICURES/PEDICURES  
WAXING \* TOP-TO-TOE TREATMENTS

*Please telephone for a list of treatment details. PEMBURY (01892) 824059*

## KEITH RABBITT

AMIMI

VAUXHALL SPECIALIST

31 years' experience at Renny's of Tonbridge

**Most makes serviced and repaired**

Why go to a franchised dealership when you can have  
a personalised service on a one-to-one.

For quality, reliability and a friendly service call Keith on  
01892 723362 or 07790 436109



M.O.T. TESTS



## MOZAMBIQUE REVISITED

**A**T EASTER 2003, a team from Pembury Baptist Church visited an orphanage run by Iris Ministries in Maputo, Mozambique, bearing gifts from the children of Pembury School and others. That trip changed the lives and outlooks of all who went. One of the many 'fruits' of the first visit was that a water well was dug for the Kawendes family, caring for 36 orphans whose parents have died of AIDS.

In October 2004, a second team of ten returned to the Iris orphanage to practically share Jesus' love with the orphans, the sick, the homeless and those marginalized in some way, living in the world's sixth poorest country. It was such a privilege to be able to love, feed, play and pray with whoever 'crossed our paths'!

Many of the 530 children at the orphanage have been brought in off the streets. Despite the obvious need, the orphanage was a very happy place in which many have known their lives transformed by the love of Jesus. Quite remarkable to see, given the traumatic pasts some have endured.

We arrived loaded with shorts and t-shirts from Pembury School, to be given to the children this Christmas. (Once again, a big thank you goes to all children and parents who gave so generously and to all those in Pembury and beyond who have supported our various appeals over the last two years.) We took pre-school supplies, crafts, footballs, Frisbees, face paint, stickers, skipping ropes and games galore. And what fun we had! Possibly more fun than the children!



*Left to right, back row first: Gail Beeching, Robert Sayell, Barbara Russell, Wendy Collins, Donna Walker, Mike Ough, Paul Beeching, Eunja Palmen, Paul Turner, Christine Sayell.*

As well as playing, we did some work! The girls' toilet and shower block was in desperate need of a face-lift, so we set to with our scrapers and paintbrushes. Some also mended torn mosquito nets while others taught pre-school. Outside the orphanage we visited the city rubbish dump where many families live and work, which was a really moving experience for everyone. We visited hospitals, prisons, the street children and homeless in downtown Maputo, distributing bread, hugs and prayers wherever we went.

Needless to say, all of us have returned never to be the same again. We gave a little but received so much more in return from the children and adults we met. Our lives were challenged to the core by some amazing individuals we met who dedicate their lives to helping others. We have come back to Pembury having seen tremendous poverty but also having met those who have very little materially but whose strength of faith leaves them so much richer than ourselves.

What a challenge, what a privilege, and what better way to spend two weeks. Needless to say, we'll be going back!

**Christine Sayell**

# **STURGEON'S**

**ROAD, DRIVE & CIVIL ENGINEERS  
COAL MERCHANTS**

**PEMBURY 822221/2/3**

## **WALROND FULLER**

**CHARTERED BUILDING SURVEYORS**

**01892 709600**

**STRUCTURAL SURVEYS AND ADVICE ON LISTED  
AND PERIOD PROPERTIES**

# **PEMBURY VILLAGE HALL**

**Available for hire.**

**Facilities include Main Hall, Meeting Room, Stage,  
Kitchen, Changing Rooms and Services.**

**Ideal for Club Meetings, Weddings, Anniversaries,  
Corporate Functions, Shows, Dances, Musical Events, etc.**

**Contact Bookings Manager – Rachel Windus on 822837**



---

## LOWER GREEN POST OFFICE TO CLOSE – THE END OF AN ERA

**H**AVING JUST BEEN through the agonising decision to close our sub post office in Pembury (Lower Green Branch) I felt like sharing my thoughts with your readers.

Firstly, I have followed with interest the opinions on the recent closures of sub post offices in urban Tunbridge Wells. The views are always the same, “What about the elderly and less fortunate members of our community?” an emotion I have first-hand experience with and one which made my decision to close all the harder!

These days, post offices are not making money from their own existence, which is why they are always coupled with a ‘retail side’. As there are too many non-profitable post office branches then closures are inevitable. This will make the surviving offices busier, but I doubt more profitable, unless people realise that the profit in a sub post office comes from its retail takings. Just look at the high street post offices, run just as post offices by Royal Mail, who made a £70 million loss last year from their endeavours.

The problem is that many surviving post offices are getting more post office business and less retail business because the likes of Tesco are fast becoming the latest convenience store in all geographic areas. No problem, so Tesco is the way forward for this market, the rules of supply and demand work as always. However, Tesco are only interested in the profitable side of retail business and leave a trail of non-profitable sub post offices in their wake. You only need to look at the Tesco takeover of the “One Stop” chain followed by the closure of “One Stop” post offices to see the Tesco approach, something that Paddock Wood residents will be all too familiar with!

So can I suggest that when Tesco are putting in plans to site a new store then the local planning department accept it only on the grounds that they include a sub post office facility in the store, then the elderly get an extra benefit from the changes? It seems to me that the elderly people whom we all respect have been forgotten by central government, other than being bullied into starting some sort of bank account to access a well deserved state pension.

Local government seems to be just as inept at recognising the needs of these people! Perhaps a business rate subsidy for anyone running a sub post office would be a start to addressing the problem.

Sorry, Pembury Lower Green pensioners, you deserve better than you are getting in your retirement. Good luck to my surviving sub post master colleagues throughout the UK. You all deserve to be knighted.

**Mark Southgate**

---

## SNOW WHITE AND THE SEVEN DWARFS ARE COMING TO PEMBURY!

**P**EMBURY PLAYERS are performing the classic pantomime ‘Snow White and the Seven Dwarfs’ this year. Opening night, in the village hall, is on Wednesday 12 January at 7.30pm for a special performance arranged for all the Brownies, Guides, Rainbows, Cubs and Scouts in Pembury. There may even be some visiting groups from further away. Then there will be nightly shows at 8pm on Thursday 13, Friday 14 and Saturday 15 with a matinee at 3pm on Saturday as well.

You can buy tickets from John and Linda

Turnbull’s Post Office on Hastings Road, at ‘Bees Knees’, Monson Road, Tunbridge Wells during shop opening hours or via any member of the cast. They cost £3 for children and concessions, and £4.50 for adults.

If you have never been to a local production like this, then you will find it very different from a big show like the Assembly Hall pantomime in Tunbridge Wells. There’s much more interaction between audience and stage, local jokes and, of course, a good chance that you know one or more of the stars!



**BLS**  
business  
solutions

**AND BEYOND**



**KC**

## Kent College Pembury

Independent day and boarding school for girls aged 11-18.  
A Methodist school founded in 1886.

- ♦ A happy, forward-thinking school offering an excellent learning environment for girls.
- ♦ High academic standards and excellent public examination results.
- ♦ Small teaching groups enabling a high level of individual attention and support.
- ♦ Modern facilities: 400-seater theatre, indoor-heated swimming pool, music school, sports hall, new multi-media laboratory for modern languages .
- ♦ Academic, music and drama scholarships at 11+, 13+ and 16+. Art and PE scholarships at 13+ and 16+. All worth up to 50% of tuition fees.
- ♦ Busy extra-curricular programme with 60 clubs and activities.
- ♦ Caring, Christian community with resident Methodist Chaplain.



Kent College Pembury  
Old Church Road, Pembury  
TN2 4AX

Tel: 01892 822006  
[www.kent-college.co.uk](http://www.kent-college.co.uk)

---

## PEMBURY MILLENNIUM BOOK TAKES ITS PLACE IN HISTORY

**M**EMORIES, STORIES, notes, signatures, comments – all these make up the snapshot of Pembury at the end of the second millennium recorded in the Pembury Millennium Book. During the whole of 2000 Pembury residents were asked to put down their thoughts and comments about living in Pembury and what it meant to them. The results were gathered together into a handsome leather bound book which is now in the safe hands of the Centre for Kentish Studies at County Hall, Maidstone.

Derek Johnson, immediate Past Chairman of the Pembury Society and Simon Galwey, last Chairman

of the Millennium Committee, were accompanied on 4 November by Parish Councillor Alison Morton (your editor) to Maidstone to deposit the book formally. Students of local history and researchers from across Kent and beyond will be able to study the original at the Maidstone Centre. A large copy of the book is in Pembury library so that local residents can consult it as well.



*Left to right Simon Galwey, Derek Johnson, Stuart Bligh (manager at the Centre for Kentish Studies), Parish Councillor Alison Morton*

---

## “GET A LIFE!”

**N**O PROBLEM on Pembury High Street racetrack! Somebody else’s, I presume? A 45-year-old parishioner told me about an incident that happened to him on Thursday 28 October in the High Street that is unfortunately all too common. He was driving past the Village Hall towards Woodsgate Corner, purposefully observing the 30 mph speed limit as it was around school leaving time when there are generally quite a lot of children and extra cars around.

Tailgating his car was a silver Honda Jazz with a young woman driver and a child front seat passenger aboard. Impatient at obeying the law, the Jazz pulled out as soon as the road widened, accelerated to over 40mph, overtook the parishioner, bombed off along the road and had to screech to a halt at the red traffic lights.

Our parishioner, arriving at the lights a few seconds later, wound his window down and politely pointed out that the speed limit was 30mph.

“Get a life!” she retorted.

I wonder whose life she meant; she was well on track to get somebody’s. Let’s hope it’s not her own child’s.

**Editor**

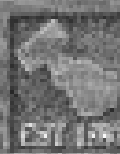
# ***Learn to drive***

with **Lesley Jackson**,  
your local fully qualified  
AA driving instructor,  
call **01892 824130**.

**Just AA sk.**

**AA driving school**

**Burslem  
Stonemasons**



## **Memorials, Restoration and Domestic Stonework**

232 The Ridge

Hastings

East Sussex TN34 2AE

**Tel: 01424 421 099**

**Fax: 01424 722 237**

[www.burslem.co.uk](http://www.burslem.co.uk)

**New Memorials, Cleaning,  
Renovation of Memorials,  
Memorial Benches and  
Additional Inscriptions.  
Brochures available**

**Tel: 01892 824420**



**GUINOT**  
INSTITUT • PARIS

*Heavenly  
Elements*

**BEAUTY & SKINCARE  
for men and women**

Putlands Leisure Centre  
Mascalls Court Road  
Paddock Wood  
Tonbridge  
Kent TN12 6NZ

**Tel: 01892 835505**

CIBTAC

BABTAC



## PEMBURY SMALL BUSINESS EXHIBITION

**E**XHIBITORS AND visitors both considered the exhibition held on 10 October to have been very successful. Although not as busy as last year's village exhibition for voluntary groups, steady attendance meant that most stall holders ended the day with having concluded useful business as well as enjoying the opportunity to have demonstrated what they could offer the residents of Pembury.

Cllr John Cunningham, the Mayor of Tunbridge Wells, opened the exhibition and all the exhibitors were particularly struck by the interest he took in them and by his words of encouragement. It is especially important to promote small rural businesses in the current economic framework and his support of the event was much valued in this respect.

Stallholders included Peter Willard, conservatory specialist; David Knight from Pippins Farm; Sue Sellwood, herbalist; Robbe Di Nardo from Prima Pots; Alison Morton from PBSS Translations; Mike Theobald from St James Place Partnership; Betty Howell from Compaid; Laura Bull, homeopath; Jo and Erik from Rainbow International; Lee Green from Spring Hill Trout Waters; Celia Price, reflexologist; Pembury Chiropractor; plus Jackie Matthias from the West Kent Chamber of Commerce and Industry. Pembury Parish Council also had a display about Pembury and life in the village.

Paul and Tamzin from 'The Complete Lunch' sold the most exquisite sandwiches and snacks throughout the day showing that their high local and regional reputation was thoroughly deserved. Celia Price gave hands on free 10-minute reflexology sessions which were pronounced as 'wonderful' by lucky recipients. PBSS Translations ran a 'Parlez-Vous?' language quiz which attracted a lot of competition, literally! Debbie Saunders of Pembury won the prize of Marks & Spencer vouchers by a very narrow margin.

The Parish Council would be very happy to run the exhibition again and looks forward to contacting the 70+ Pembury businesses for their support.



*Left to right: David Knight of Pippins Farm, Cllr Alison Morton, Cllr Leslie Gregory, Jackie Matthias, West Kent Chamber of Commerce and Industry*

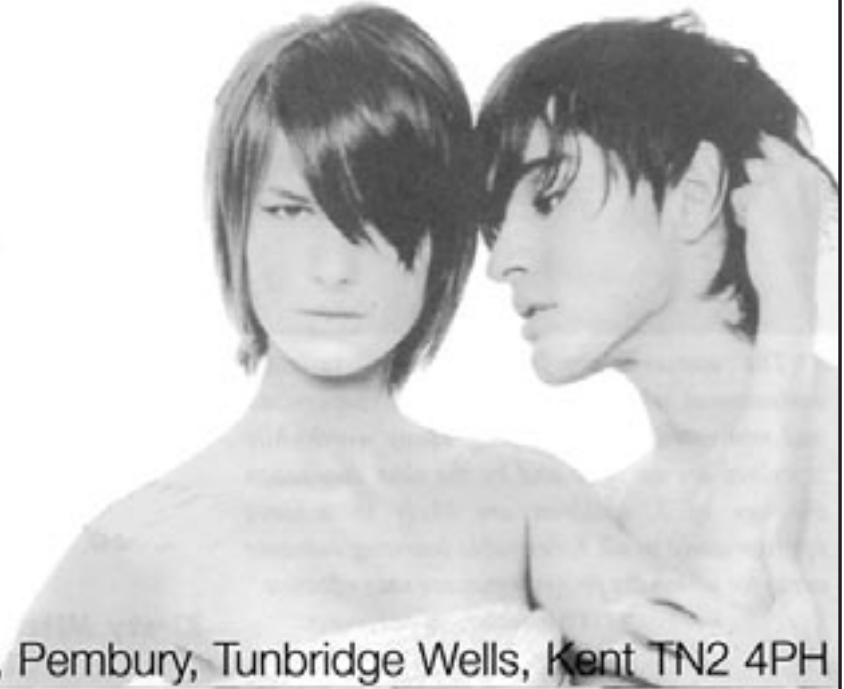


*Debbie Saunders receiving her prize from Alison Morton of PBSS Translations*



*Left to right: Cllr Keith Farley; Cllr David Coleman, Vice-Chairman, Pembury Parish Council; Borough Cllr John Cunningham, Mayor of Royal Tunbridge Wells; Cllr Leslie Gregory, Chairman, Public Relations Working Group, Pembury Parish Council; Cllr Alison Morton, Editor, Pembury Village News and Vice-Chairman, Public Relations Working Group, Pembury Parish Council; Cllr June Crowhurst; Borough Cllr (for Pembury) Paul Barrington-King*

## HEAD-MASTERS HAIR & BEAUTY UNISEX SALON



25-27 High Street, Pembury, Tunbridge Wells, Kent TN2 4PH



Home Improvements – Extensions – Free Estimates

# ALAN CLARKE

*BUILDERS & DECORATORS*

Tel: Pembury 823932

---

## PEMBURY'S ANTI SOCIAL BEHAVIOUR DISPERSAL ORDER

**A**S EVERYONE MAY know, in September Tunbridge Wells Borough Council and Kent Police made a Dispersal Order relating to Pembury under the Anti Social Behaviour Act 2003. This was the first such order in West Kent.

This followed an extraordinary spate of anti-social disorder problems that struck primarily the High Street area but also overflowed into other parts of the village. Under the order the police were given the power to disperse any groups they considered to be 'potentially dangerous or anti social' and to arrest people who refused to comply.

It is fair to say that the Parish Council has mixed views on this. While we are grateful for the recent massive police efforts and that the Dispersal Order, which lasted until the end of October, stopped major incidents of further public disorder, it is not at all clear that the root problems, affecting the quality of life of many innocent residents, have improved. It is also obvious that dealing with such matters is now very complicated and involves a large number of agencies. The police also seem to be constrained. Not so long ago, major public disorder would result in arrests, the enforcement of the law through the courts and, where appropriate, guilty parties being bound over not to re-offend.

This does not seem to happen now, much to the frustration of the police, one suspects.

However, we cannot just sit back and moan about 'the good old days' and the failings of national politicians. We, the community, have to work together with the various

agencies to address the problems and that is not just suppressing 'the anti social'. Many of the issues result from an increasing lack of social cohesion and the alienation of those who feel they are outside the system; we need to deal with that, too.

That is why the Parish Council welcomes and is already playing a full part in the local initiatives masterminded by Kent County Councillor Kevin Lynes. These are summarised elsewhere in this issue (pages 3 and 5).

We particularly welcome the work that has been done on youth issues and ensuring Pembury will shortly have its own Kent Community Warden.

**David Coleman**

Vice Chairman Pembury Parish Council



---

## SEASONAL TOPICS FROM WEST KENT POLICE COMMUNITY CRIME REDUCTION DEPARTMENT

### CRIME PREVENTION

- Keep valuables out of sight at home and in the car.
- Do not leave keys in vehicles (even for a minute while paying for fuel).
- Don't leave car keys out when at home, pop them in a drawer or coat pocket; that way they cannot be hooked out of a window or letter box.
- Make sure documents with account and personal details are properly destroyed so that others cannot spend your money for you. See below for useful website.



### HOME SAFETY

Thinking of extending your home or feeling vulnerable? The Crime Reduction unit has staff who will complete a survey of your property free of charge and can advise on home security and 'secure by design' for your property. Ring 01732 370677 and ask for the Crime Reduction Officers.

When you are buying batteries for Christmas presents please remember to get one suitable for your smoke alarm.

### PERSONAL SAFETY

- Make sure your children wear something reflective when out at night and have a means of contacting you in an emergency.
- Keep an eye on your elderly/vulnerable neighbours.
- Don't drink so much over Christmas/New Year that you don't know what you are doing or who with!

### ROAD SAFETY

- Make sure your car has a winter check and that fluid and anti freeze levels are right. Allow time for the windscreen to clear in the morning if it is frosty.
- Don't drink and drive! The local drink drive campaign starts on the 1 December.



Those with internet access may like to visit:  
[www.crimereduction.gov.uk](http://www.crimereduction.gov.uk) and [www.identity-theft.org.uk](http://www.identity-theft.org.uk)

We wish you a safe and trouble free festive season.

**Inspector Simon Wilshaw,**  
Crime Reduction Coordinator West Kent Police



## DRAGON BOATS

WITH NO REGARD for life or limb, 16 'brave' (and a little crazy!) rowers, mostly parents of pupils at Pembury school, prepared to board a long, yet very narrow and extremely unstable Dragon boat for the first of three qualifying races on Bewl Water at this years Fundraisers' Dragon Boat Festival.

With oars in hand, life vests secured and full instructions given, including the official capsizing procedure – a pointless exercise, so we thought – the sky blackened, the wind strengthened and our resolve hardened. We could picture the faces of the kids at Pembury School when the funds that we were raising for the PSA were used to provide them with new playground equipment, exciting teaching aids and much more.

1. . . 2. . . 3. . . 4. . . The united call, synchronising our stroke rate as we glided along like a Chinese serpent to the starting line. We even looked great because as part of a new sponsorship package local Pembury businesses had paid to have themselves depicted on our hats and T-shirts – hence our team name 'The Pembury Village People' (see photo). Everything was coming together perfectly as we turned for the start. At that moment, the wake from a support motorboat rolled smash-bang into our boat, lifting, spinning and finally dumping us into the water. Bobbing around like apples at an early Halloween party, we were finally plucked out and packed into one of the offending motorboats and returned to shore.

Wet, freezing, humiliated; but nothing could dampen our resolve as we piled straight back

into another boat. We came back to win our second race with our best time of 1 minute 4.03 seconds, earning us a respectable 39th place overall.

I wish to thank all the children and their families and friends for their support and Royal Mail who made a donation to our cause. Also, a big thank you goes to the



*Back row from left to right: Max Eager, Phil White, Duncan Pease, Alan Harris, John Goulding (hidden), Mark Slack, Rob Elcombe, Richard Beeching, Rob Di Nardo, Terry Skittles.*

*Bottom row from left to right: Julie Eager, Hilary White, Chris Moysey, David Raymond, Sarah Harris, Pete Moysey, Mick Stevens*

following companies for joining the Pembury School PSA Supporters' Club:

- Bladerunners – hairdressers
- Camden Arms – pub
- Denise Barnes – estate agents
- King William IV – pub
- Pembury Dentist Surgery – dentist
- Kings Toll Nursery – garden plants & pots
- Raj Vojan – Indian restaurant

together raising to date over £2500! A great team effort, with the kids the ultimate winners.

**Robbe Di Nardo**  
Pembury School PSA



## Peter Willard Conservatory Specialist

Your Local Supplier of Top Quality

UPVC Conservatories. Any size and

many different styles.

Just call *NOW* for a Free Estimate

*...A Complement to Your Home*

Telephone no. 01892 824736      Mobile no. 07950 120341

## Burtons Pembury's Solicitors

- ★ Full Range of Legal Services
- ★ Prompt Efficient Friendly Service

The Tyled House  
23a High Street  
Pembury, Kent TN2 4PH

Tel (01892) 824577

---

## NEWS FLASH – A POSH PLOT!

There is always a small, but steady, turnover of allotmenters and if the facts published in newspapers and magazines are to be believed many new tenants are women – especially young mothers. The trend is even showing in Pembury. But I know that lots of other people would love to try growing their own food, except that they are worried they won't be able to keep on top of it all the time. Well I'll let you into a little secret . . . very few people do (and I'm not one of them).

To encourage the more wary (realistic/pessimistic/faint hearted) people to take an allotment on, the Parish Council is going to prepare a plot over this winter as a show plot. It will be dug over and planted up to demonstrate what can be done by an allotment holder. Although it will be designed as a model plot, it will be subject to all the vagaries of the weather, weeds, etc., just like any other allotment. However, the aim is to show what CAN be achieved by a bit of effort and a good sense of humour!

The rental on a whole plot is £15 per year – what a bargain, I hear you all cry – but if you are really up for the challenge of taking on an overgrown plot without the help of the Pembury groundsmen, then, when you have rescued the allotment from its derelict state, you will get the next year rent-free!

For anyone wanting to take on an allotment, the number available has actually gone down a bit. The three along the hedge on Henwoods Green Road have been left to grass over and the parish council now mows them. This makes it easier for the hedge cutting machines to get to the bank twice a year when it needs tidying. There have been some ideas about making this bank more wildlife friendly by planting butterfly and bird attracting plants along it. A nature reserve would suit me well but it would make the groundsmen's job harder again. More thinking time is needed but it would be lovely if it could happen.

**Caroline Mazze**

---

## NEWS FROM HOSPICE IN THE WEALD

**H**OSPICE IN THE WEALD is gearing up to commemorate its 25 years of caring for our community in 2005.

The local based charity which serves a population of 280,000 over 400 square miles of West Kent and East Sussex wants its Silver Anniversary to be extra special.

During the last three years it has opened more beds and extended its range of services and clinics and now wants its 25th Anniversary to raise those additional funds needed to provide more facilities for people facing life threatening conditions.



The Hospice is interested to hear from individuals and companies that would like to play a part in raising funds, volunteering some free time, or supporting the

Hospice in some way. Contact Glenda Rogers on 820546.

Currently the Hospice is looking for Nurses, grade D and E, as well as a Housekeeping Assistant (part time). Whatever

your skills and interests, please consider your local Hospice and help to be part of its future.

**John Ashelford**  
Chief Executive



## PEMBURY GOES TO LOMPRET!

On a distinctly grey and cloudy morning six representatives from Pembury set off on a visit to Lompret near Lille. We had been invited by the Mayor, Michel Loosvelt, and his council to visit Lompret and see for ourselves what Pembury's prospective twinning partner looked like. Halfway to Lille the weather changed and turned into a glorious late summer's day which was perfect for Lompret as they were holding their equivalent of our village fete.

After a welcome reception at the Mairie (equivalent to town hall) when we presented a gift of local Pembury and Kentish produce to the Lompret



*Cllr Alison Morton presents Michel Loosvelt, Mayor of Lompret with a basket of local produce on behalf of Pembury Parish Council and the people of Pembury*



*Lompret town hall*

representatives, we visited the 'braderie' (a cross between a bring-and-buy sale and boot fair, but run by children) and saw a demonstration of paintballing about to start. Visiting the primary school, we were taken round by children, teachers and parent-teacher representatives and impressed by the children's ability to speak English. The school representatives were extremely keen

on the idea of twinning exchange visits.

A delicious lunch at the Mairie was followed by dropping into the village quiz taking place in the excellent village/sports hall, a flying visit around the local countryside,



*Visit to the 'braderie' outdoor sale*





*The Mayor of Lompret welcoming the visitors from Pembury*

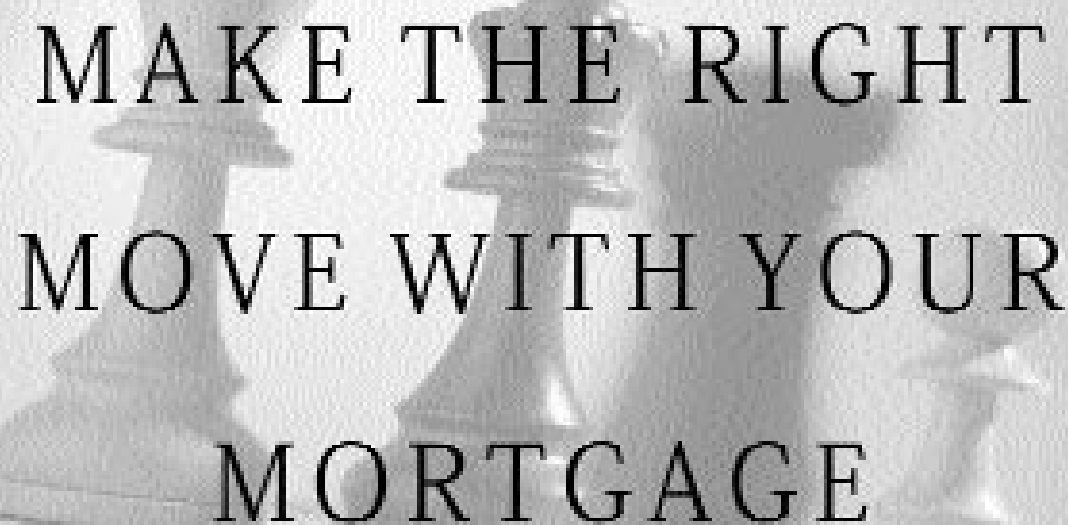
a visit to the church and a cup of tea before departing. A great deal of talking and exchange of ideas ran continuously throughout the day and the enthusiasm was infectious.

We received good advice and support from the LGIB – the Local Government International Bureau – which helps localities develop these links. Moreover, the visit would not have been anywhere near so easy to organise without the practical help given by Eurotunnel who provided us with tickets under their Town Twinning scheme. Many thanks go to both these organisations.

The next step is to get all the village clubs and groups together and invite them to set up exchanges, meetings and events with their counterparts in Lompret. The success of the twinning will only be assured if all groups in Pembury take an active part. There is a great deal of openness, kindness and enthusiasm in Lompret for this project. If you are interested in finding out more, do contact Alison Morton on 824938 or Mike Miller on 822527.



*Lompret school*



# MAKE THE RIGHT MOVE WITH YOUR MORTGAGE

St. James's Place provides a comprehensive mortgage service designed to suit your own individual requirements offering:

- *Remortgages and Buy-To-Lets*
- *Exclusive Schemes*
- *Written Quotations*
- *Access to most of UK's Lenders*
- *A comprehensive range of products for first time/next time buyers*

To make the right move with your mortgage call:

**01892 823206 or 0207 638 2400**

Or write to:

**MICHAEL THEOBALD**

**ST. JAMES'S PLACE, 3 MOORGATE PLACE, LONDON EC2R 6EA**

E-mail: [michael.theobald@sjpp.co.uk](mailto:michael.theobald@sjpp.co.uk)



**ST. JAMES'S PLACE**  
PARTNERSHIP

*The St. James's Place Group stands behind and guarantees the advice given by members of the St. James's Place Partnership when recommending any of the products and services provided by companies in the St. James's Place Group.*

YOUR HOME IS AT RISK IF YOU FAIL TO KEEP UP REPAYMENTS ON A MORTGAGE OR OTHER LOAN SECURED ON IT.

## JAN'S GARDEN

**T**HE EVER continuous cycle of seasons brings us to WINTER once again. Memories of warm days fade and thoughts of activities for colder weather take over. In our gardens there is still plenty that can be done, weather permitting. We need to take stock of what is worth keeping of the skeletal stems left from last summer's growth, for winter interest. These structures look marvellous in pale winter sunshine with a settle of frost. They also provide a home for over-wintering insects, and any seeds and berries left become food for the birds that is vital for them during winter.

As winter progresses severe frosts are likely to occur and we should take preventative measures to mulch or cover up plants that are vulnerable. Tender varieties such as pelargoniums and half-hardy fuchsias should by now be lifted and in a frost free place. Frozen paths can become slippery. Avoid using salt as it will run and be detrimental to the garden, instead use sand. During snowfalls remove any from bird-tables and feeders so they are able to eat and drink without difficulty.

Re-firm tall plants loosened by the wind and frost, checking their stakes and ties. Roses need cutting back by a third and re-firmed to help prevent wind-rock. All borders should be tidied up before the cold weather makes it impossible. Compost all plant debris; if left it provides ideal shelter for slugs and snails.

During late winter in a mild spell, many herbaceous plants that are three or four years old can be dug up, divided and re-planted if not done in autumn, discarding the inside and retaining the outer newer growth. Using the two spades back-to-back method provides instant new plants! This gives an opportunity for some winter digging over established beds and preparation for new ones. Any frost we have had will help break down heavy clods into a workable texture. Incorporate lots of compost or manure and add coarse grit if you need to improve drainage. Firm your new plants in well and allow space round them.

Roses are still all round favourite flowers despite the black spot and aphids (which can be treated). November to March is ideal planting time especially for bare-rooted roses that are reputedly the best to grow, having been lifted when dormant and healthy so are less traumatised and happier plants. Specialist nurseries are the best for choice. Roses that produce lovely hips create good autumn and winter interest and also attract birds into the garden. Roses planted with other shrubs and perennials help to reduce occurrence and spread of disease. After mild winters they can be pruned during February. Using sharp secateurs reduce stems to between three and five inches long at an outward facing bud. Floribundas need less severe pruning.

Finally, keep a check on all dahlia tubers and gladioli corms for rot. Spray greenhouse plants with water occasionally. Finish winter pruning and use to continue the compost heap.

Have a great Christmas. Happy gardening!

**Jan Davies**





---

## PEMBURY EVENING WI – OCTOBER

**O**UR 40TH ANNIVERSARY celebrations were a resounding success with our President, Elizabeth Fieldhaus welcoming 60 guests from our own and other WI's in the area, which included two of our original members in 1964.

Our guest speaker was Janet Clare who is a member of the Magic Circle, and she enthralled us with her tricks and tales of her determination to become a member of the all-male Magic Circle.



We offered our guests ample refreshments, which included a hot meal with wine, followed by a piece of our celebration cake which was made by one of our members.

This was a most enjoyable evening, with time to renew old acquaintances and also make some new friends. Many thanks to all those who worked so hard to make this a very special evening.

**Cynthia Johnson**

---

## ST ANSELM'S STEPS UP

**A**T LAST, THE FRONT steps leading to St Anselm's Catholic Church have been formally opened.

Originally, putting a proper flight of steps in had been designated as a Millennium project, but had to be put on hold when the roof needed repairs. After four years (and the toilet upgrade needed to comply with new regulations) we were able to put the entrance project into reality.

In September 2004 Fr Joseph Aduse, Fr Geoffrey Pointer and Rev Bill Eason were able to bless the steps and formally open them. Since the opening, a wooden fence has been erected for the safety of the play school and parishioners; the trees and bushes have been cut back so that you get a good view of the Church from the road. In addition, on the inside we have a representation of St Anselm on the window at the altar end of the church.



We hope all these improvements will benefit the parishioners and the village of Pembury.

**Janet Ditchett**



## PEMBURY IN THE PAST

### Old School Photos

*Endless fascination with old photographs show how much importance people attach to the past. Who says history is a dying subject?! Eileen Hicks (née Brown) sent us in this 1950s photograph.*

“My mother-in-law who lives in Pembury sent me your Autumn 2004 Pembury Village News and in the article ‘Pembury in the Past’ was little me! I enclose a photo which [. . .] was taken in 1950 at Pembury School.

*Back row (from the left): Ivan Philpott, David Kemp, Roy Jarvis, Michael Armitage.*

*Middle row: Colin Withers, Raymond Lee, Leslie Vousden, George Hide, Robert Paris, Geoffry Cyster, Brian Hicks, Richard Kirkham.*

*Front row: Angela Vater, Goda Vater, Rita Young, Ann Jenner, Eileen Brown, Marie Meinel.*

I married Brian Hicks and was married for nearly 45 years until his death in January 2003. I hope this might be of interest to Pembury residents.”



### Some facts about Pembury School . . .

Pembury School has been on its present site since 1872 and the infants' area was built in 1963. The first headmaster was Joseph Spyer; the head teacher in 2004 is Mrs Cath Thewlis. The school currently has just over 400 pupils.

# David Salter

## Gas & Plumbing Services

Central Heating Installations & Upgrades

Boiler & Cylinder Changes

Breakdowns, Connections & Servicing of all gas appliances

15 Years experience with British Gas

Corgi Registered



**EMERGENCY CALL OUTS – MOBILE 07733 107333 – HOME 01892 824481**

# Kempsters The Funeral Directors

A family business that has served the community since 1882

**A COMPLETE 24 HOUR FUNERAL SERVICE**

**2-4 ALBION ROAD • TUNBRIDGE WELLS**

**Telephone: 01892 523131**

Be thoughtful, take out a  
GOLDEN CHARTER  
PRE-PAID FUNERAL PLAN



## Steffan Keily

**FOR ALL YOUR FENCING REQUIREMENTS**

All types of fencing supplied and fitted  
Close board, panels, palisade, post & rail, gates

**FREE ESTIMATES FULLY INSURED**

**HOME: (PEMBURY) 01892-824048 MOBILE: 07941138060**

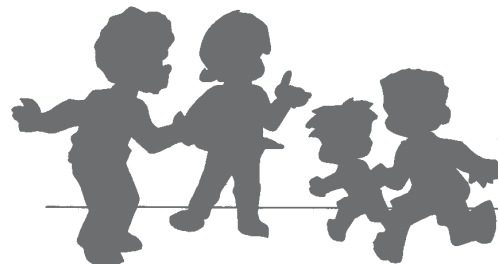
# EXPERIENCED CHILDMINDER

Experienced Registered Childminder  
has full and part time vacancies. Very  
accommodating hours, great flexibility  
and a friendly home environment.

**Telephone Debbie:**

**01892 824605**

**07944 831351**



---

## SNIPPETS

### **Parish Council events**

I know it's early, but you might like to make an advance note of some events being planned by the Parish Council for 2005:

*Annual Parish Meeting*

Monday 21 March 2005

*Musical Picnic on the Green*

Saturday 11 June 2005

*Pembury Village Fete*

Saturday 9 July 2005

*Pembury Village Fireworks*

Friday 4 November (provisional)

---

### **Pembury Village Fireworks**

Another great success this year! Over 2,000 people stood and 'Oooh'-ed and 'Aaah'-ed at the spectacular show brought to them by Fawkes Fireworks on Friday 5 November. Speights the Butchers did an excellent trade in takeaway food and Coopers provided

a great range of light sticks, stars, headbands and bracelets which added to the fun.

The fireworks night has become one of the key village events and raises a significant amount of money for the Parish Council's charities – St John's Ambulance, Compaid, Headway and Hospice in the Weald. This year, over £1,350 was contributed by voluntary contributions from spectators. Thank you!

---

### **Village Market**

Regular Tuesday morning visitors to Pembury Village Hall will want to thank all those who have provided various stalls and served coffee during the past year.

We wish them a happy Christmas and a restful two weeks break. Closed on 28 December and 4 January, the market and coffee shop will re-open in the new year on 11 January.

---

## PEMBURY DARBY AND JOAN CLUB

**T**HE ABOVE CLUB was started in 1949 by Mrs Amy Johnson for the benefit of village people over the age of 60 to chat with each other as there were a number of widows and pensioners who were lonely. There were of course very few cars.

The club met fortnightly at various venues over the years and when myself and my wife joined 27 years ago there was a membership of 100. At most meetings there was a speaker or musical entertainment. There was also a collection for a charity, which over the years on average amounted to somewhere in the region of £350, which for pensioners was a good effort. Various charities benefited such as The Hospice, RNLI, Kent Air Ambulance, RNIB and latterly Macmillan Cancer Relief.

Things have, of course, changed since 1949. People are living longer and at 80 years of age still drive cars. Of course, the 'great reaper' has been in evidence over the years and the membership is now down to 25 and I'm afraid that I can no longer spare the time to carry on. It is unfortunate but there have been no younger volunteers to take on the duties of secretary to arrange entertainment so I'm afraid that the club will close at the end of the year. The end of an era.

**W B J Woodhams**

## RECIPE CORNER

### VEGETARIAN LASAGNE

6oz (175g) lasagne sheets (If using pre-cooked then run the sheets under a cold tap to make them pliable.)

1lb (450g) chopped vegetables, sautéed – leeks, red pepper, courgettes and mushrooms with a handful of peanuts make a tasty mixture

1 jar Bolognese sauce – any remaining can be frozen

2 oz (50g) butter

2 oz (50g) plain flour

1 pint milk

4 oz (110g) grated cheddar

Put butter, flour and milk into a saucepan together and stir with a wooden spoon until mixture thickens. Add 2 oz grated cheese

Put some sheets of lasagne into base of oblong ovenproof dish approx 10in x 8in.

Cover with half the vegetable mixture and

half the Bolognese sauce. Put a second layer of lasagne sheets over this, then more Bolognese sauce and remainder of vegetable mix. Top with last of the lasagne, then pour white sauce over and sprinkle remainder of cheese on top.

Bake at gas mark 6/400°F/200°C for 30 minutes until bubbly and golden.

Serves 5 to 6.



### HOMEMADE SHORTBREAD

6oz (175g) plain flour

3oz (75g) cornflour

6oz (175g) butter

3oz (75g) caster sugar

Sift together the flour and cornflour. Cream butter and sugar until light and fluffy. Combine everything and knead lightly until smooth. Press mixture into oblong tin 7in x 11in. Prick all over with a fork. Bake at gas mark 3/325°F/170°C for 40 minutes. Cut into finger or triangles while still warm and leave in tin until quite cold.

**Jean Aust**





# AMBERSIDE DANCE STUDIO

## PEMBURY VILLAGE HALL

Pre-School Creative Movement Classes for Boys and Girls

Ballet, Modern and Tap Dancing Classes for all ages.

ISTD Grades and Examinations

**Please Contact: Margaret King AISTD – Pembury 822574**

## THE HEALING ART OF **REFLEXOLOGY**

*Reflexology has been shown to be effective for:*

Back pain	Hormonal imbalances
Migraine	Sports Injuries
Arthritis	Digestive disorders
Sleep disorders	Stress related conditions



**CELIA PRICE 01892 824333** (Member of AoR)  
**15 Henwood Green Road, Pembury**

***'You deserve a break!'*** A MODERN HOTEL OFFERING. . .

■ **84 En-Suite Bedrooms** including executive rooms and luxury suites.

■ **Mallows Restaurant** offering an exciting choice of freshly prepared lunches and evening meals.

■ **Oast Bar and Comfortable Lounge** for a relaxing light bite, refreshing drink or a selection of teas and coffees.

■ **Poolside Leisure Club** – an atrium of tranquillity with swimming pool, sauna, steam room and spa.

■ **Open to all.** ■ **Just past Pembury Hospital**

**TONBRIDGE ROAD, PEMBURY, KENT TN2 4QL. Tel: 01892 823567**

**[www.ramadajarvis.co.uk](http://www.ramadajarvis.co.uk)**



## **EXPERIENCED FEMALE MATHS TEACHER AND EXAMINER**

**OFFERS ONE-TO-ONE TUITION FOR ALL LEVELS  
FROM AGE 11 TO GCSE.**

**REASONABLE RATES APPLY**

**PLEASE CALL (01892) 825568**

## MACHU PICCHU OR BUST!

**T**WO PEMBURY residents, Denzil Edwards and Rose Mitson, have completed a four-day trek in Peru in aid of the British Heart Foundation this October. The trek follows the Inca Trail that runs from Cusco to the ancient Inca city of Machu Picchu. The terrain is rugged and the altitude varies – sometimes precipitously – between 2500 and 4200 metres. The whole group experienced mild symptoms of altitude sickness at first, but quickly acclimatised.

Rose is a registered nurse and a life-long resident of Pembury. She is a founder member and current chairman of the Tunbridge Wells branch of the BHF, and went on the society's trek last year in China.

Denzil, a consultant psychiatrist at Pembury Hospital, has done the annual BHF London to Brighton Bike Ride for the last ten years and very much enjoyed the change of scenery, and the exciting new challenge of this trek.

The BHF is the country's leading charity for research into heart and circulatory disease, and

it funds education and the provision of cardiac equipment to hospitals and patients. All the sponsorship money raised for this trek is going to the BHF's charitable work.

Anyone who would like to contribute retrospectively can e-mail Rose at [RosemariePoppy@aol.com](mailto:RosemariePoppy@aol.com) or Denzil at [dedwards@nildram.co.uk](mailto:dedwards@nildram.co.uk), or phone 825150.



*Denzil and Rose in training, making friends with a llama on Paul White's farm in Pembury*



*Rose and Denzil at Machu Picchu*



## RAINBOW INTERNATIONAL

### The Carpet and Upholstery Cleaning Specialist

- ✓ Carpets, Upholstery and Rugs
- ✓ Spot cleaning and Stain Removing
- ✓ Fully insured & trained technicians
- ✓ Competitive Prices
- ✓ Leather Care
- ✓ Patio, Deck & Driveway Cleaning
- ✓ Truck-mounted cleaning system
- ✓ Satisfaction Guaranteed

**Call now for a free quotation 01580 212 701**

***If we can't clean it no one can!***

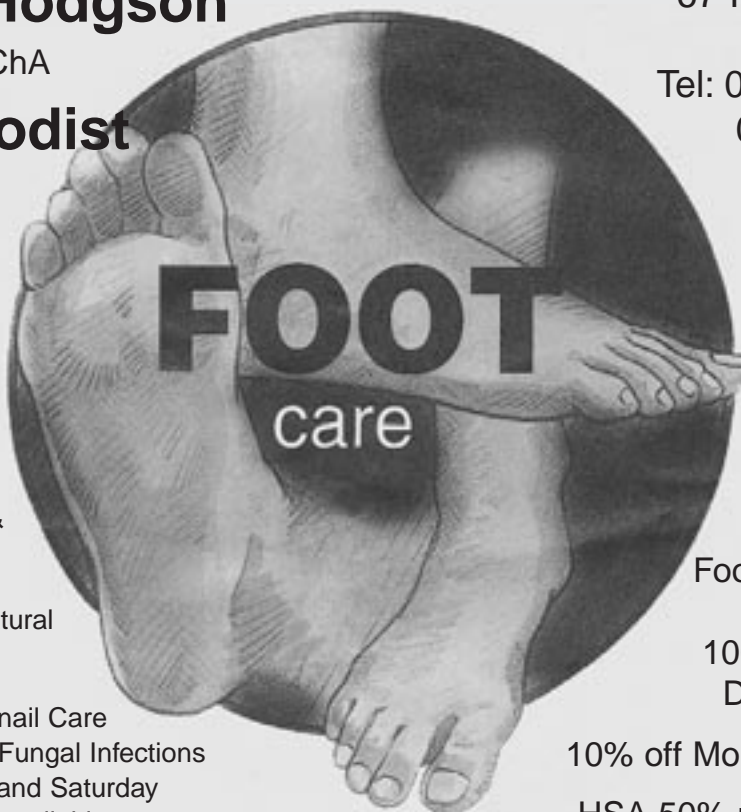
## Dawn Hodgson

MSSCh MBChA

### Chiropodist



- Professional Advice and Friendly Care
- Diabetic Assessment & Maintenance
- Verruca Treatment, Natural Remedies or Chemical
- Ingrowing Toenail Care
- Treatment for Fungal Infections
- Day, Evening and Saturday appointments available



67 Hastings Road  
Pembury

Tel: 07761 583 756  
01892 824916

Full range of  
Footcare products,  
including  
100% Natural and  
Diabetic Friendly

10% off Mondays over 65's  
HSA 50% refund available

GENUINE  
**FREE RANGE EGGS**

ALL HENS GIVEN FULL DAYLIGHT ACCESS TO PASTURE.

FULL RANGE OF SIZES AVAILABLE.

IT'S THE FRESHNESS THAT MAKES THE DIFFERENCE!

**LITTLE HAWKWELL FARM**  
**MAIDSTONE ROAD**  
**PEMBURY**  
(top of Colts Hill)

**Telephone: 01892 824184**

*'The family Nursery  
and terracotta importers  
on your doorstep'*

**HIGHEST QUALITY  
AT THE LOWEST PRICE!**



**KINGS TOLL NURSERY**  
Maidstone Road on B2160  
Tel: 01892 824474

Bedding/Patio Plant Growers : Shrubs & Perennials : Trees : Bulbs :  
Bare rooted hedging : Loose seed potatoes, onion & shallot sets :  
Specialist in Citrus, Olive Trees & Hardy Palms : Vegetable & Herb Plants :  
Hanging Baskets & Pots planted to order or ready made – always available :  
Fresh flowers – weekly : Large range of houseplants.

Over 1,000 varieties of terracotta and glazed pots, urns, novelties and  
ornaments imported directly from all over the world.

Helpful advice – Carry to car service – Local deliveries – Garden Services

**OPEN 7 DAYS A WEEK**



## CRIME IN PEMBURY

I REALLY DID hope that it wouldn't be necessary to report such a disastrous set of crime figures as these for July, August and September. Suddenly, the instances of criminal damage shot up to 24 but sadly we know that this figure is far from accurate, with many people suffering in silence and not bothering to report it to the police. Interestingly enough, the figure for criminal damage for the same period of 2002 was eight.

However, we owe the police a great vote of thanks for their concentrated efforts in Pembury which suddenly brought about a great feeling of relief in the village and everyone that I have spoken to is extremely grateful. Many thanks especially to Inspector Simon Wilshaw whose prompt response when the Catholic Church was attacked on three or four consecutive nights was much appreciated.

We must never go through such a traumatic period again. Even though difficult, especially when children are in their teens, I would say to all parents just occasionally find out what their offspring's movements are. It will not matter who they are, if they are caught committing any criminal act they will be handed over to the police; named and shamed. The net is slowly tightening on the suppliers of the alcohol to these youngsters and it will make my day when they can also be named.

The good news is that it is possible that Pembury may soon have a Community Support Officer and we must welcome him/her with open arms. Please make him/her welcome and I hope that there is an open meeting called where we can all introduce ourselves and later on feel comfortable about passing on confidential information.

Many thanks go to Kevin Lynes, our County Councillor, for his unfailing support for Pembury on many issues but especially on crime.

Happy Christmas to you all, but let's make it even better by just spending some time with someone who is lonely, by giving something to those who have little and remembering not to throw away all your old clothes, etc. after Christmas because to someone they will mean everything.

**Hugh Boorman**

MONTH	Assault	Burglary Dwelling	Burglary Other	Criminal Damage	Fraud and Deception	Drugs	Theft from Motor Vehicle	Theft Offences	TOTAL
<b>July 2004</b>	2	2	1	6	2	1	1	9	<b>24</b>
<b>August 2004</b>			5	8	1			2	<b>16</b>
<b>September 2004</b>	3	4	2	10			2	3	<b>24</b>
<b>TOTAL</b>	<b>5</b>	<b>6</b>	<b>8</b>	<b>24</b>	<b>3</b>	<b>1</b>	<b>3</b>	<b>14</b>	<b>64</b>
<b>ROAD</b>									
A21 B				1					<b>1</b>
Beagles Wood Road				1					<b>1</b>
Brickfields	1	1		1					<b>3</b>
Church Road				1					<b>1</b>
Elmhurst Avenue				1					<b>1</b>
Hastings Road	1	1	1	4		1	2	1	<b>11</b>
Henwood Green Road	2			4					<b>6</b>
Henwoods Mount			2						<b>2</b>
Herons Way				1				1	<b>2</b>
High Street				3	3			2	<b>8</b>
Knights Close				1					<b>1</b>
Lower Green Road		1	1	2				2	<b>6</b>
Maidstone Road	1	1							<b>2</b>
Old Church Road				1				3	<b>4</b>
Romford Road			1						<b>1</b>
The Grove				1				1	<b>2</b>
Tonbridge Road			2				1	3	<b>6</b>
Woodhill Park		2	1	2					<b>5</b>
Woodsgate Way								1	<b>1</b>
<b>TOTAL</b>	<b>5</b>	<b>6</b>	<b>8</b>	<b>24</b>	<b>3</b>	<b>1</b>	<b>3</b>	<b>14</b>	<b>64</b>

## PEMBURY IN CHINA

*Louise Fowlie contacted us with her experiences of China . . .*

“**H**I, SOME of you may remember me, others may not. I’ve lived in Pembury since I was five years old and now am taking a year abroad as part of my degree programme, to study in Beijing, China. I thought I’d take a few moments to write some of the things I have experienced in China, as I recently read the Autumn 2004 copy of Pembury Village News.

The first thing that struck me when I stepped off the plane was the heat. We arrived on 20 July, right in the middle of the summer. The temperature was about 38°C (100°F) and it stayed about the same for about a month or so. The second obvious thing was the smell and the dust. Beijing is a very dusty city and many of the side streets really smell bad. After trying to take everything in, in those first few moments, I was then whisked off to the hotel, whilst on the way discovering China’s road system.

In the last three months, I have come to realise that Beijing has to be the busiest city I have ever been to, where road signs don’t mean a great deal and traffic tends to drive wherever it pleases.

Generally, the consensus is to drive on the right, and if you want to turn right, carry on, regardless of whether the traffic light is red or not. Despite this, the taxis are, in spite of being quite old, in a way advanced. Each taxi has a machine, which produces a receipt telling you how far you’ve travelled, the amount it has cost, and the time you’ve been “waiting”, either stood still or travelling at less than 20 kph. Beijing also has specifically designed bicycle paths which run along the side of the road, and which cars tend to use a lot too. For the amount of cyclists though, I guess the number of paths is essential. Unless you’ve seen pictures or experienced it for yourself, I can’t express the amount of bicycles that ride on Beijing’s roads everyday.

Whilst I am studying at university, every day from 8am until 12 pm, I have still found time to visit some of the sights and enjoy a social life. There are certain places, which a lot of foreigners tend to visit for a night out, and if you need an often-welcome break from Chinese, those are the places to go.

Everywhere is generally a lot cheaper than the UK, with a trip to the supermarket for a month’s worth of food working out at about £8. The restaurants are also cheap with many dishes costing an average of 30p. Beijing is famous for its Roast Duck, and as I’ve found, some places are better than others, but generally as Beijing is a modern city, everywhere has edible, fresh food. Although the language can sometimes be a barrier, with taxi drivers having the strongest Beijing accent I’ve ever heard, I generally manage to survive!

Overall, as I am here for a year, I have come to accept Beijing as my new home, and although I miss the quietness of Pembury, I have so many friends here to make this one of the most memorable, enjoyable and exciting experiences of my life.”

**Louise Fowlie**



*Me (far left) and some friends with my Chinese tutor and family on our first trip to the Great Wall. The weather wasn't particularly great and we were rained on, on our way back down the Wall.*

---

## *FOR YOUR DIARY*

Village Coffee Morning – Village Hall Tuesdays 9.30am – 12 noon, full market last Tuesday of the month same times.

WRVS Lunch Club – every Wednesday at 11.45am in the Pembury Village Hall during the school term time

### **January**

- 1 Pembury Footpath Walkers – Stonecourt Lane – 2.15pm
- 3 New Year's Footpath Walk – Stonecourt Lane – 10am (Details from 822051)
- 5 St Peter's Mothers' Union: 'Doing It Ourselves' – Upper Church Meeting Room – 8pm
- 6 Pembury Afternoon WI: New Year's party – Village Hall – 2pm
- 7 Pembury Evening WI: The Neptune Coastal Campaign – Village Hall – 7.45pm
- 10 Parish Council Meeting – Village Hall – 8pm
- 10 St Peter's Photographic Club – Upper Church Meeting Room – 8pm
- 13/14/15 Pembury Players Pantomime: 'Snow White and the Seven Dwarfs' – Village Hall – 8pm plus matinee at 3pm on Saturday 15 January
- 24 St Peter's Photographic Club – Upper Church Meeting Room – 8pm
- 29 Pembury Athletic Football Club: Disco – Village Hall – 8pm.  
Contact Charlie Hambleton tel: 824022

### **February**

- 2 St Peter's Mothers' Union: 'Here's One I Read Earlier' Sheila Miller – Upper Church Meeting Room – 8pm
- 3 Pembury Afternoon WI – Village Hall – 2pm. Details from 822267
- 4 Pembury Evening WI: Sugarcraft – Village Hall – 7.45pm
- 5 Pembury Footpath Walkers – Meet at The Camden Arms – 2.15pm
- 5 WI Jumble Sale – Village Hall – 2pm
- 5 Pembury School Association: Adult Disco –  
For details, please contact Tracy Perrett tel: 823334
- 7 Parish Council Meeting – Village Hall – 8pm
- 7 St Peter's Photographic Club – Upper Church Meeting Room – 8pm
- 12 Pembury Sequence Dance Club dance – Village Hall – 7.30pm
- 21 St Peter's Photographic Club – Upper Church Meeting Room – 8pm
- 24 Pembury Gardeners' Society: AGM – Village Hall – 7.45 for 8pm

### **March**

- 2 St Peter's Mothers' Union: AGM and Bring & Buy – Upper Church Meeting Room – 8pm
- 3 Pembury Afternoon WI – Village Hall – 2pm. Details from 822267
- 4 Pembury Evening WI: The WI's Jewel in the Crown – Village Hall – 7.45pm
- 5 Pembury Footpath Walkers – Meet at Stonecourt Lane – 2.15pm
- 7 Parish Council Meeting – Village Hall, meeting room – 8pm
- 7 St Peter's Photographic Club – Upper Church Meeting Room – 8pm
- 10 Pembury Gardeners' Society: Talk 'Herbaceous Plants' by Hilary Newman – Village Hall – 7.45 for 8pm
- 14 Floral Art – Village Hall – 8pm
- 21 ANNUAL PARISH MEETING – Village Hall – 8pm
- 21 St Peter's Photographic Club: TBA – Upper Church Meeting Room – 8pm
- 26 Gardeners Spring Show – Village Hall – 2.30pm

# CHURCH SERVICES OVER THE CHRISTMAS PERIOD

## ST PETER'S

19 December	6.30 pm	Parish Carol Service – Upper Church
24 December	4 pm	Children's Crib Service – Upper Church
	11.30 pm	Midnight Eucharist – Upper Church
25 December	8 am	Holy Communion – Upper Church
	9.45 am	Family Eucharist with carols – Upper Church
	11.30 am	Holy Communion with carols – Old Church
2 January	11.30 am	Carol Service – Old Church



## ST ANSELM'S PEMBURY

24 December	7.30 pm	Carols
	8 pm	First Mass of Christmas
25 December	10.30 am	Holy Mass
26 December	10.30 am	Holy Mass followed by Children's Nativity

## PEMBURY BAPTIST CHURCH

19 December	6.30 pm	Carols by Candlelight
24 December	11.30 pm	Christmas Eve Communion
25 December	10 am	Celebration of the birth of Jesus
26 December	10 am	Worship for all ages



## PEMBURY FOOTPATH WALKERS

**I**T'S AUTUMN – darker, wetter, colder – but you can still brighten these days up by walking with Pembury Footpath Walkers while we look forward to the spring.

New members are always welcome on our monthly local walks which take place on the first Saturday (details in 'For Your Diary' near the back of this magazine).

We are a friendly group and the pace is gentle, though the terrain occasionally requires a little more strenuous effort.

The winter walks are, of necessity, quite short, but they do give the opportunity for a little fresh air and exercise and the sunsets can be stunning if the weather is clear. Now would be a good time for those of you who have a conscience about being couch potatoes to come and join us. Our walks also provide an opportunity to explore some of the more rural parts of Pembury.

Once a year, in June, we venture out further afield for the whole day. Last June we went



to the Darwell Reservoir area and next June we hope to explore round Bough Beech.

We look forward to seeing some new faces, together with our regulars, in 2005.

**Neil and Kathryn Franklin**

Telephone 823212

## CHURCH TIMES

### ST. PETER'S CHURCH SERVICES

#### Upper Church

8.00am Holy Communion

9.45am The Parish

Eucharist  
and Junior Church

10.00am Holy  
Communion  
(Wednesdays)

#### Old Church

11.30am Matins (except  
first Sunday, Holy  
Communion)

Evening services as  
advertised on Church  
noticeboards

### CATHOLIC CHAPEL OF ST. ANSELM – PEMBURY

Sunday Mass 10.30am

Holy Days – Vigil Mass  
7.30pm

Confessions:  
Sunday 10.15am

Weekday Service:  
Wednesday – Mass 7pm

### PEMBURY BAPTIST CHURCH

We praise God and hear  
his word on Sunday at  
10am and 4th Sundays at  
6.30pm. Other evenings to  
be announced.

We have many activities  
during the week for  
mums, toddlers, young  
people and senior citizens.  
Ring the church office  
825590 for details.

#### January 6

Alpha Course commences  
at Church – 825590 for  
details.

# YOUR REPRESENTATIVES

## County Council



Mr Kevin Lynes  
5 Downs Cottages, The Down,  
Lamberhurst, Kent TN3 8EX  
Tel: 890922

## Borough Council



Bruce Ballantine  
6 Maidstone Road  
TN2 4DD  
Tel: 822156



Paul Barrington-King  
22 The Coppice  
TN2 4EY  
Tel: 825144

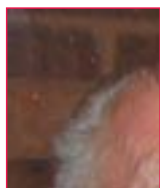


David Mills  
125 Ridgeway  
TN2 4ET  
Tel: 825577

## Parish Council



Cllr Mrs Sarah Clarke  
Little Stanton, Romford Road  
TN2 4AY  
Tel: 823932  
**Chairman of Parish Council**



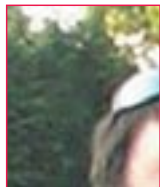
Cllr David Coleman  
22 Ridgeway TN2 4ER  
Tel: 823402  
**Vice Chairman of Parish Council**  
*Chairman of Planning Working Group*



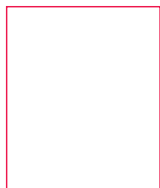
Cllr Mrs June Crowhurst,  
44 Elmhurst Avenue  
TN2 4DA  
Tel: 824873



Cllr Leslie Gregory  
47 High Street TN2 4PH  
Tel: 822343  
*Chairman, Public Relations  
Working Group*



Cllr Steve Morton  
2 The Coppice TN2 4EY  
Tel: 824938  
*Chairman, Finance & Audit  
Working Group*



**Clerk to the Pembury Parish Council**  
Mrs Barbara Russell, 6 The Grove  
TN2 4BU. Tel: 823193  
Email: PemburyPC@pembury.org

## Parish Council

There are vacancies. If you are interested in becoming a Parish Councillor contact Barbara Russell, Clerk to the Parish Council, details below.



Cllr Richard Crouch  
17 Highfields Close  
TN2 4HG  
Tel: 823164



Cllr Keith Farley  
3 Beagles Wood Road  
TN2 4HX  
Tel: 823440



Cllr Mrs Alison Morton  
2 The Coppice TN2 4EY  
Tel: 824938  
*Chairman, Pembury Village News  
Editorial Working Group*



Cllr Mrs Sally Osborn  
34 Canterbury Road  
TN2 4JT  
Tel: 822726



**Assistant Clerk to the Pembury Parish Council**  
Richard Parsons, 6 The Grove  
TN2 4BU. Tel: 823193  
Email: PemburyPC@pembury.org

# VILLAGE ORGANISATIONS

## AGE CONCERN

Mrs Sandra Springett. Tel.: 522591

## ALZHEIMERS DISEASE SOCIETY

Simon Rooksby, Pineview Day Hospital  
Pembury Hospital. Tel: 823535, Ext 3515

## BEAVERS, CUBS AND SCOUTS

Mike Cartwright, 16 Cornford Park, Pembury.  
Tel: 823235

## BLACK & WHITE MARCHING MILITAIRE

Tel: Louise 823097

## BOWLS CLUB

Len Birnie. Tel: 01892 681222

## BROWNIES AND RAINBOWS

Mrs M. Allan, 9 Henwood Green Road. Tel: 822373

## CATHOLIC CHURCH

Deacon Bill Eason. Tel: 824133

## COMMUNITY WORKING GROUP

Hugh Boorman. Tel: 823068

## COMPAID TRUST

Computer Aid for Disabled People. Tel: 824060  
Transport for Special Needs. Tel: 823488

## CONSERVATIVE PARTY

Terry Cload, 56 Herons Way. Tel: 823966

## CRICKET CLUB

Hon. Secretary: Andy Weaver. Tel: 824362

## DARBY & JOAN CLUB

Jim Woodhams. Tel: 823990

## FRIENDS OF PEMBURY HOSPITAL

c/o Pembury Hospital. Tel: 823535

## FRIENDS OF PEMBURY PARISH CHURCH

Chairman: Mrs S. Clarke, Little Stanton,  
Romford Road. Tel: 823932

## GIRL GUIDERS

1st Pembury Company: Mrs A. Baker,  
Tel: 0771 264 3946

## HEADWAY

Libby Slattery. Tel: 823120

## HOSPICE IN THE WEALD

Maidstone Road. Tel: 820500

## KENT COLLEGE

Headmistress: Anne Upton. Tel: 822006

## KENT COLLEGE JUNIOR SCHOOL & NURSERY

Headmistress: Anne Lawson. Tel: 820204

## LABOUR PARTY

Dave & Sally Osborn, 34 Canterbury Rd. Tel: 822726

## LARKFIELD

Principal: Mr Roger Gibson, Cornford Lane. Tel: 822168

## LIBERAL DEMOCRATIC PARTY

Bruce Ballantine. Tel: 822156

## LITTLE RASCALS (formerly 'Meet-a-Mum')

c/o PBC Office. Tel: 825590

## NATIONAL CHILDBIRTH TRUST

Co-ordinator: Helen Dunkerley. Tel: 822529

## NATIONAL FEDERATION OF THE BLIND, UK

Michael Coggles. Tel: 822705

## NEIGHBOURHOOD WATCH

Gill Pavely. Tel: 822605

## PEMBURY ATHLETIC (YOUTH) FOOTBALL CLUB

David Gow. Tel: 824119

## PEMBURY BAPTIST CHURCH

Assoc Pastor Wayne Alexander  
Church Office. Tel: 825590

## PEMBURY BRIDGE CLUB

Geoff Plummer. Tel: 824652

## PEMBURY F.C. SATURDAY

Mick Waterman, 26 The Coppice. Tel. 824137

## PEMBURY F.C. SUNDAY

Phil Craxton, 34 Woodhill Park. Tel: 823928

## PEMBURY FOOTPATH WALKERS

N. & K. Franklin, 11 The Meadow. Tel: 823212

## PEMBURY GARDENERS

Ann Purton. Tel: 824223

## PEMBURY PHOENIX TWIRLERS

Dave or Chris Brett. Tel: 824233

## PEMBURY PLAYERS

Chairman: John Hawker. Tel: 824327

## PEMBURY PRE-SCHOOL NURSERY

Mrs C. Hughes. Tel: 668514

## PEMBURY SCHOOL

Headteacher – Mrs C. Thewlis. Tel: 822259

## PEMBURY SCHOOL ASSOCIATION

Tracey Perrett. Tel: 823334

## PEMBURY SCHOOL HOUSE NURSERY

Teacher in charge: Rosemary Rich. Tel: 825580

## PEMBURY SEQUENCE DANCE CLUB

Secretary: Mrs Marion Warren. Tel: 547617

## PEMBURY SHORT MAT BOWLING CLUB

Arthur Storey. Tel: 822509

## PEMBURY SOCIETY

Steve Morton. Tel: 824938

## PEMBURY STOOLBALL CLUB

Mrs Sandy Rice-Tucker. Tel: 822483

## PEMBURY TENNIS CLUB

Mrs S. Smith, 2 Ridgeway. Tel: 822405

## PEMBURY UPPER AND OLD CHURCH

Rev. Stephen Sealy. Tel: 824761

## PEMBURY VILLAGE MARKET

Sue Boreham Tel: 824385

Eve Fiddimore Tel: 518277

## ROTARY CLUB OF SOUTHBOROUGH & PEMBURY

Secretary: Mike Raper. Tel: 822095

## ROYAL NATIONAL LIFEBOAT INSTITUTION

Peter Chartres, 54 Woodhill Park. Tel: 823759

## SANDRA'S HOUSE

Pre-School Nursery, Mrs S. Toogood, Queens Folly,  
64 Lower Green Road. Tel: 824252

## SCOUT & GUIDE HQ MANAGEMENT TEAM

Mike Cartwright, 16 Cornford Park, Pembury.  
Tel: 823235 and Jackie Fichtmüller, 19 Bellfield Road,  
Pembury. Tel 825032

## ST. PETER'S MOTHERS' UNION

Secretary: Mrs J. Tompkins. Tel: 823123

## ST. PETER'S PHOTOGRAPHIC CLUB

Events Secretary, Carol Wakeford. Tel: 822030

## TABLE TENNIS CLUB. John Burleton. Tel: 823250

## TREE WARDEN. Caroline Mazzei Tel: 822493

## TUNBRIDGE WELLS ACCESS GROUP

Gill Paveley Tel: 822605

## TUNBRIDGE WELLS & DISTRICT VICTIM SUPPORT

SCHEME. Tel: 513969

## VILLAGE HALL

Manager (bookings): Rachel Windus.

Tel: 822837

## WOMEN'S INSTITUTES

Afternoon: Mrs Edna Morris. Tel: 822267

Evening: Mrs Chris Johnson. Tel. 823150

## WRVS LUNCH CLUB

Contact: Mrs Amanda Everett. Tel: 823280

## YMCA

Simon Stanley. Tel: 534444



**Kent College Preparatory School, Pembury**

A balanced foundation for future success

# Happiness + Confidence = Success



We believe that a happy, confident child is a successful one and our girls love coming to school. High academic standards, excellent SATs results and preparation for grammar and independent senior schools are at the heart of what we do, but we never forget that there is more to childhood and learning than examinations.

If you would like to know more about our approach to developing happy, confident and successful pupils, please contact Mrs Jones on 01892 820204 or visit our website at [www.kent-college.co.uk](http://www.kent-college.co.uk)

"A happy and secure learning environment ... teaching is very good overall and often excellent enabling pupils to achieve very well ... excellent wide-ranging programme of extra-curricular activities ... very high levels of pastoral care."

Independent Schools Inspectorate Report, 2004

Kent College Preparatory School is an independent school for girls aged 3-11.  
Nursery class from age 3 with flexible attendance.  
Old Church Road, Pembury, Tunbridge Wells TN2 4AX