

The background of the cover is a photograph of a village scene. In the center, a stone church tower with a crenellated top and arched windows is visible. To the left, a large, leafy tree partially obscures the tower. In the foreground, there is a grassy area, a paved path, and a small landscaped garden with a white lamp post and several bushes. A large, bare tree trunk is on the right side of the frame.

PEMBURY VILLAGE NEWS

ISSUE 118
SUMMER 2004

CONTENTS

Winner Takes All!	3 & 5	Compaid	24
Pembury Set to Bloom Again!	7	Pembury Cricket Club Ladies 2004	
Roads and Things . . .	9	Calendar	24
Calling All Groups and Clubs . . .	9	My Plot	25
Pembury Quiz Night	11	Pembury in the Past	27/28
Beach Party in Pembury	11	Pembury Youth Club	28
Environmental Improvement Around Pembury	13	Church Times	29
3rd Pembury Brownies	13	Pembury People – James Webb	30
Hospice in the Weald	15	Jan’s Garden Views	33
Pembury Short Mat Bowls Club	15	Rosie’s Recipe Corner	34
TWBC Summer Activities for Young People 2004	16	For Your Diary	35
Rev. Stephen Sealey	16	Your Representatives	36
1st Pembury Brownies on Holiday	16	Crime in Pembury	37
A Pembury Society Event	17	Village Fete on the Green	38
Snippets	19, 23 & 25	Village Organisations	39
A Big Thank You!	20/21		

Cover photograph by Leslie Gregory

Editorial Working Group:

Alison Morton (Editor), Paul Barrington-King, Leslie Gregory,
Rosemary Latter, Steve Morton and Ann Owen

Please note: The Editor’s decision is final on whether or not to publish any item submitted. The Editor reserves the right to edit (that is to cut, précis, alter, correct grammar and spelling) any item published.

PEMBURY VILLAGE NEWS

Editor: Mrs Alison Morton
2 The Coppice, Pembury TN2 4EY
Tel: 824938 Fax: 825134
Distribution enquiries: Parish Clerk 823193
Email: pvn@pembury.org
Website: www.pembury.org

Pembury Village News is published four times a year by the Parish Council, but the views expressed in the magazine do not necessarily represent official council opinion or policy.

Typeset and printed by
TMH, Tunbridge Wells.

WINNER TAKES ALL!

PEMBURY-BASED groups had terrific success in the community grants awarded on 22 April 2004.

Eighty-four guests gathered at the Ramada Jarvis Hotel in Pembury to celebrate the winners of the Kent & Sussex Courier's and AXA PPP Healthcare's Heart of the Community Awards. More than 80 applications were received for a slice of the £10,000 available.

Pembury winners included the Pembury Athletic (Youth) Football Club (£2,000 towards a new pavilion), Hospice in the Weald (£1,000 to buy an intravenous machine), Compaid Trust (£1,000 towards a professional folding machine), Pembury Scouts and Guides (£500 for a new cooker) and Headway (£1,000 to run a series of drumming workshops).

Janet Ditchett (left) and other members of the Pembury Scouts and Guides Management Team



PAYFC with Pembury Parish Clerk Barbara Russell, Cllr Hugh Boorman, Cllr Keith Farley, Kevin Edser, David Gow and other PAYFC representatives



COPY FOR NEXT ISSUE

Any news items or articles for possible inclusion in the next issue of this magazine must be forwarded to the Editor before
10 August 2004.

If you use a computer to type your article, it would be extremely helpful if you could send it in on disk or by e-mail. If you do not have a disk, we can supply you with one.



Member of the National Association of Estate Agents



**Discuss your property requirements with our qualified friendly staff in
comfortable relaxed surroundings**

★ ★ OPEN 7 DAYS A WEEK ★ ★

16 High Street, Pembury TN2 4NY

Tel: 01892 822880 Fax: 01892 825250 email: pembury@denisebarnes.co.uk

Also at: Tunbridge Wells: 01892 527733

Sevenoaks: 01732 450866

Prestige & Country Homes: 01892 618181

Brenchley: 01892 724000

Tonbridge: 01732 771616

Residential Lettings: 01732 500400. Black Cat Financial Services Ltd: 01732 771444

G. F. GROVES

Your friendly local builder

CARPENTERS
JOINERS

BUILDING
CONTRACTORS

EXTENSIONS/CONVERSIONS/NEW-BUILD

*PLANNING SERVICE AVAILABLE
PURPOSE-MADE JOINERY*

FREE ESTIMATES • FAST SERVICE

Telephone (01892) 838619

WINNER TAKES ALL! continued

Headway Trust team with former Mayor Dennis Smith (right)



Hospice in the Weald team with Chief Executive John Ashelford (right)

Photographs courtesy of
Courier Newspapers



Compaid Trust team

P.L.H. DECORATING

Interior - Exterior
Painting & Decorating

Pembury (01892) 823813

Brian V Toogood

CARPETS & VINYLs SUPPLIED & FITTED
CARPETS & UPHOLSTERY CLEANED



Stain protection treatment for carpets and upholstery

FOR PERSONAL & PROFESSIONAL SERVICE **TEL: PEMBURY 824252**



OVER 28 YEARS' experience.
EST 1977

Any make of carpet available.
Pattern books brought to your home.
Carpet and upholstery cleaning, also rugs
and orientals.
Carpets adapted and repaired.

JULIE ROBINSON

IHBC, BABTAC

Professional Beauty Therapist



FULL RANGE OF PROFESSIONAL BEAUTY TREATMENTS AVAILABLE
WITHIN COMFORTABLE AND PRIVATE SURROUNDINGS



SPECIALISED DERMALOGICA FACIALS * MAVALA MANICURES/PEDICURES
WAXING * TOP-TO-TOE TREATMENTS

Please telephone for a list of treatment details. PEMBURY (01892) 824059

KEITH RABBITT

AMIMI

VAUXHALL SPECIALIST

31 years' experience at Renny's of Tonbridge

Most makes serviced and repaired

Why go to a franchised dealership when you can have
a personalised service on a one-to-one.

For quality, reliability and a friendly service call Keith on
01892 723362 or 07790 436109



M.O.T. TESTS

PEMBURY ALL SET TO BLOOM AGAIN!

HANGING BASKET champion Sarah Burnham of Heskett Park helped Parish Councillor Gill Pavely and Notcutts plants manager, Nick Lucker, launch this year's Pembury in Bloom competition by inviting them along to see her greenhouse packed full of baby plants, ready to take on all comers in this year's Pembury In Bloom.

So dig out your spades, shovel into action and share your floral feats with the rest of the community for a chance to win some super prizes. The competition is sponsored by Notcutts Garden Centre and run in partnership with Pembury Parish Council.

"Pembury in Bloom is a popular community based competition," says Jon Kemp, Garden Centre manager. "The competition brightens up the village each year and it would be great to see even more people entering this year. Gardeners can either enter their own gardens or others can enter them on their behalf. Do not be daunted by Sarah's fabulous entry last year because there are chances for everyone to win a prize."

With gardening vouchers to be won, this year's categories are:

- The Notcutts Best Front Garden;
- The Best Residential Hanging Basket;
- The Best Container Planted and Maintained by a Child or Group of Children;
- The Notcutts Rose Bowl for the Most Attractive Commercial Frontage;
- The Notcutts Shield for the Best Allotment.

The closing date for all categories is Monday, 12 July 2004. Judging takes place shortly afterwards and the winners' names will be announced at a special presentation tea to be held at Notcutts. Entry forms are enclosed with this Village News, available from Pembury Parish Council (contact details page 36) and from Notcutts Garden Centre, Tonbridge Road, Pembury.



Left to right Sarah Burnham, Nick Lucker, Plantaria Manager at Notcutts, and Cllr Gill Pavely from Pembury Parish Council

STURGEON'S

ROAD, DRIVE & CIVIL ENGINEERS
COAL MERCHANTS

PEMBURY 82221/2/3

WALROND FULLER

CHARTERED BUILDING SURVEYORS

01892 709600

STRUCTURAL SURVEYS AND ADVICE ON LISTED
AND PERIOD PROPERTIES

PEMBURY VILLAGE HALL

Available for hire.

**Facilities include Main Hall, Meeting Room, Stage,
Kitchen, Changing Rooms and Services.**

**Ideal for Club Meetings, Weddings, Anniversaries,
Corporate Functions, Shows, Dances, Musical Events, etc.**

Contact Bookings Manager – Rachel Windus on 822837

ROADS AND THINGS . . .

AFTER A LOT of pushing and shoving in a collective effort by Pembury Parish Council, our Borough Councillors and County Councillor, not to mention Pembury residents, we are pleased to let you know that we will be getting some road improvements over the next few months.

Apart from a resurfacing programme (details below), safety and parking schemes are being introduced to make life more pleasant for all residents. A scheme to reduce speed near Pembury School and make the junction with Church Road safer is scheduled to be done in the summer holidays (subject to a satisfactory safety audit).

At the top of the village near Camden Avenue, new pavements with some parking spaces in front will ensure that pedestrians will no longer feel vulnerable walking from the Camden Arms bus stop to the Pelican crossing.

In order to stop the dangerous parking on the Catholic Hall side of the Village Green on Lower Green Road, double-yellow lines have been requested. Your Editor is only one amongst many who has narrowly escaped an accident caused by inconsiderate parking at that junction.

New 'gateways' with coloured road markings and larger 30 mph signs will be placed on the entrances to the village on the High Street, by Bo-Peep corner and on Maidstone Road which should lead to everybody being quite clear about the proper speed limit that is acceptable inside Pembury.

Road re-surfacing

A road closure order will be in place from 12th July (but work will probably not start on that date because it is an order covering many parts of the Borough) to close Lower Green Road from its junction with the High Street to its junction with Polley Close. Work should take 1-2 days.

A second road closure order will be in place from 1st August for the following roads to be re-surfaced: Amberleaze Drive, Highfield Close, Woodsgate Way, Woodhill Park, Henwoods Crescent, The Glebe, Forest Way, The Coppice, Knights Close, The Grove.

CALLING ALL GROUPS AND CLUBS, ORGANISATIONS AND SOCIETIES OR CLUSTERS OF ANY ILK . . .

YOU MAY HAVE seen in last edition's 'Snippets' that your Editor had a moan about the various clashes of dates of events in the village. Well, to stop this happening as much as possible in the future, the Parish Council has revived the idea of a Pembury Diary, but with a difference!

The diary will be accessed via a link on the Pembury website (look under the section 'Pembury Village Life'), printed off and kept in the Library in a paper version. Those on-line can check the diary using their computer at home or the public access ones in the library. The paper copy can be viewed in a loose leaf folder, also at the Library.

The hero who has volunteered to co-ordinate this is Janet Ditchett, a familiar village personality. There can be few who have not bought their pills, potions, creams and cough

medicine at Janet's (and Peter's) shop before the couple retired.

So here is how it will work . . .

If you want to hold an event, check the diary first.

As soon as you have your event(s) date(s) decided, contact Janet with the details.

Janet will need date, time, venue, organisation and contact name and address. She can be contacted by:

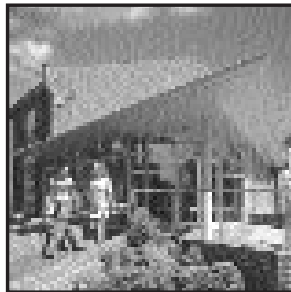
- post at 7 Cornford Park, Pembury TN2 4PW
- telephone on 01892 822586
- email jmditchett@freebone.net

So let's try and avoid having multiple events. Despite recent advances in cloning technology, we still haven't found a way to be at more than one place at a time!

Editor



BLS
 PROFESSIONALS
 AND MANAGERS



Kc

Kent College Pembury

Independent day and boarding school for girls aged 11-18.
 A Methodist school founded in 1886.

- ♦ A happy, forward-thinking school offering an excellent learning environment for girls.
- ♦ High academic standards and excellent public examination results.
- ♦ Small teaching groups enabling a high level of individual attention and support.
- ♦ Modern facilities: 400-seater theatre, indoor-heated swimming pool, music school, sports hall, new multi-media laboratory for modern languages .
- ♦ Academic, music and drama scholarships at 11+, 13+ and 16+. Art and PE scholarships at 13+ and 16+. All worth up to 50% of tuition fees.
- ♦ Busy extra-curricular programme with 60 clubs and activities.
- ♦ Caring, Christian community with resident Methodist Chaplain.



Kent College Pembury
 Old Church Road, Pembury
 TN2 4AX

Tel: 01892 822006

www.kent-college.co.uk

PEMBURY QUIZ NIGHT

ALIVELY QUIZ NIGHT was enjoyed by all those present at the Village Hall on Friday 14 May. As before, it was very well organised by Pembury Scouts and Guides units. Twenty-two teams of six from a wide range of village groups and organisations took part and the rivalry was strong, but very friendly. Keith Merrin, the Pembury Community correspondent for the Courier, took over as quizmaster this year, maintaining order in a friendly and confident manner.

The winning team representing the Pembury Footpath Walkers was presented with the Parish Council Cup by Parish Council Chairman, Sarah Clarke, and received a cheque for £200 to donate to the charity of their choice, in this case, £100 to the Pembury Scouts and Guides and £100 to the Kent Air Ambulance. Runners up were: 2nd The Brains Trust, 3rd The Willans, 4th The Big Dippers, 5th Muts, joint 6th Jaded C, Brainstormers and Pembury Parish Council. The Maltcheesers in last place were very sporting winners of the wooden spoon.



Full results can be found on the Pembury Village News website at <http://www.pembury.org/quiz04.htm>

Many thanks must go to the Scouts who ran the bar and the Guides who organised the evening and the raffle.

The winning team: left to right Kathryn Franklin (receiving the cup), Barbara Ballantine, Neil Franklin, (partially hidden), Parish Council Chairman Sarah Clarke (presenting the cup), Brian Toseland, Peter Parfitt, Martha Toseland.

BEACH PARTY IN PEMBURY!

Saturday 3rd July 1.30pm

OK, SO WE HAVEN'T got the sea and there will be very little sand but we will have everything else! There will be ice creams, candyfloss, pony rides, bouncy castle and barbeque to give the Pembury School Fete a seaside theme this year.

SUN – Yes, please!

If the weather is like it was last year it will be a marvellous day.

SEA – A lot of water will be thrown at the volunteers in the stocks and sloshed around by the panning for gold. A lot of liquid refreshment will be available at the tea and beer tents!



SAND – The under 5s can have a lovely time in the sand pit and play area. We have a chance for you to get silly with the welly throwing, slippery pole competition, knobbly knees competition and seaside postcards.

There will be a street dancing display, a tug of war competition, Punch & Judy, and school orchestra to entertain.

There will be a huge range of stalls to entertain including; plant, coconut shy, tombolas, craft stalls, teas, cakes, white elephant and many more! So make a date in your diary.

Linda Bowen, Pembury School Association

Learn to drive

with **Lesley Jackson**,
your local fully qualified
AA driving instructor,
call **01892 824130**.

Just AA sk.

AA driving school

**Burslem
Stonemasons** EST. 1890

Memorials, Restoration and Domestic Stonework

232 The Ridge
Hastings
East Sussex TN34 2AE
Tel: 01424 421 099
Fax: 01424 722 237
www.burslem.co.uk

New Memorials, Cleaning,
Renovation of Memorials,
Memorial Benches and
Additional Inscriptions.
Brochures available

Tel: 01892 824420



GUINOT
INSTITUT • PARIS

Heavenly

BEAUTY & SKINCARE
for men and women

Putlands Leisure Centre
Mascalls Court Road
Paddock Wood
Tonbridge
Kent TN12 6NZ

Tel: 01892 835505

CIBTAC

BABTAC

ENVIRONMENTAL IMPROVEMENT AROUND PEMBURY

IN THE WINTER 2003 News (page 4), we wrote about hedge-laying. Well here are some results!

December 2003



February 2004



May 2004
Growing madly!

3RD PEMBURY BROWNIES

3RD PEMBURY BROWNIES spent a very busy holiday at Broadstone Warren this Easter. Twenty five brownies enjoyed the extensive grounds with egg/hedgehog (!) hunts, picnics, games and long walks. New brownies made their Promise in the woods followed by a BBQ tea. Craft badges were earned – not only for gluing, painting, cutting and collage but also knitting and sewing which proved to be both interesting and fun. All twenty five brownies were returned to parents tired but most looking forward to the next Brownie holiday.



**HEAD-MASTERS HAIR & BEAUTY
UNISEX SALON**



25-27 High Street, Pembury, Tunbridge Wells, Kent TN2 4PH



Home Improvements – Extensions – Free Estimates

ALAN CLARKE

BUILDERS & DECORATORS

Tel: Pembury 823932

HOSPICE IN THE WEALD

AFTER NINE AND a half years as Fundraising Director, Richard Snow left the Pembury-based charity Hospice in the Weald in early May.

Richard joined the Hospice in 1994 at the start of the campaign to raise £4.3 million to build the new Hospice to include an In-Patient facility in Maidstone Road, Pembury, which opened in 1998. In the five years since the first patient was admitted to the In-Patient Unit the charity has extended its range of services and facilities to help more people in its 400 sq mile catchment area of West Kent and East Sussex.

Hospice in the Weald now has to raise close to £3 million each year to meet the demands for its vital services with only around 10% core funding coming from the NHS. As the charity looks forward to its



25th Jubilee year in 2005, Richard Snow feels that it is time for the challenge of raising such a large sum to be given fresh eyes and new ideas. He adds, *"I have thoroughly enjoyed my time with the Hospice and both Chris and I have met so many wonderful people who are so committed to its work. We both wish the Hospice continued success for the future."* Richard's wife Chris resigned earlier this month as

Voluntary Link Co-ordinator for Pembury due to other commitments.

John Ashelford, Chief Executive, Hospice in the Weald commented, *"The charity has been very fortunate to have both Richard and Chris helping to raise funds for us for such a long time. Most charities see their fundraisers move on within five years. We will always be grateful for all their hard work and wish them every success, good health and happiness for the future."*

PEMBURY SHORT MAT BOWLS CLUB

PEMBURY SHORT Mat Bowls Club closed their season with their finals evening on Friday 23 April. The first match was the drawn pairs, Pat Jackson and Bill Squires against Tim Whitmore and Bob Kilbey, with the winners trophy going to Pat and Bill. We then enjoyed the final of the arranged pairs between Geoff and Celia Wickenden who were the winning pair with David and Mary Taylor as runners-up.

There was a brief interval for refreshments supplied by Sandra Squires and Pauline Kilbey which gave a party atmosphere to the evening. The last final was a singles match between Janette Thomson and Bill Squires. This was a very thrilling match with Janette just beating Bill by one shot on the last end. Lesley Brown and Arthur Storey won the Captain's Cup, which is an afternoon competition played through the season. Sandra Squires and David Taylor were runners-up.

The club had an unsuccessful season with the five league teams but had better results in the Kent County Competitions with one pair, two triples and two single players all reaching the final knock-out stages. The two single players reached the last sixteen with one player losing to the Kent Captain and the other one lost to the Kent number one player.

Arthur Storey

REV. STEPHEN SEALY

THE REVD. STEPHEN SEALY, St Peter's Upper and Old Church vicar, is leaving Pembury later this year for a new challenge in the suburban fringe of London. After eight years here, Stephen is taking on the church of St John the Evangelist, a town centre church in Sidcup with a parish of around 10,000 people.

He says that it will be a wrench to leave the good friends he has made here and he will miss the beautiful countryside around Pembury. He has enjoyed village life here in Pembury with its strong sense of community.

After a spell of study leave in North Wales, Rome and Iona between July and October which will give him time for reflection and refreshment,

Stephen will be back in Pembury for about a month and will take formal leave in early November.

Whilst personally sad to see him move away from Pembury we would like to wish him the very best of luck for his new challenge in Sidcup.



TWBC SUMMER ACTIVITIES FOR YOUNG PEOPLE 2004

DURING THE SUMMER holiday period there will be a range of sport and art activities on offer for young people, including in Pembury Recreation Ground. Tunbridge Wells Borough Council Leisure Services will be distributing the 'Summer Activities for Young People 2004' brochure at the beginning of July. The brochure will contain details of various courses, some of which are co-ordinated by Leisure Services in partnership with local clubs and coaches, others are organised directly by sports clubs or local organisations.

Sports activities on offer will include tennis and football camps, judo classes, indoor and outdoor climbing, athletics courses and in addition there will be an exciting range of activities on offer at the Weald Sports Centre, Cranbrook; Putlands Sports and Leisure Centre, Paddock Wood; and the Tunbridge Wells Sports and Indoor Tennis Centre.

Arts activities will take place at various venues, including Tunbridge Wells Museum and Art Gallery and Trinity. Also, the Borough Councils Multi-Activity sessions will be back again this summer, combining the skills of professional artists working with clay and crafts and experienced sports leaders will deliver parachute games, mini sports and general playground fun.

The brochure will be distributed to all schools in the borough, sports centres, libraries, the tourist information centre, Trinity and Tunbridge Wells Museum and Art Gallery. All schools are provided with enough brochures for one copy per family, so keep your eye out for your copy in your child's book bag at the beginning of July!

Editor: The Borough did not have the exact timings for sports in Pembury as we went to press. We will try and publicise the timings on the Parish notice boards, via the Community News column in the Courier, etc. Football sessions are being offered in August by SAFA – see 'SNIPPETS' on page 23.

1ST PEMBURY BROWNIES ON HOLIDAY

IN OUR 60th Anniversary Year we decided to be bold and go further afield for our Pack Holiday. A coach journey to Kingsdown International Scout Centre at Deal led to great excitement for twenty brave Brownies.

We stayed in a bungalow with wooden floors – lovely to look at but very noisy at 1.30am.

The weather was great and we spent lots of time outside. The Brownies went on go-carts and grass sledges; they climbed trees and practised their skipping; they baked biscuits and swept up the flour. After four busy days they slept on the bus on the way home!

Thank you to everyone who helped.

Moira Allan 1st Pembury Brownies

A PEMBURY SOCIETY EVENT

ALL THE MEETINGS of the Society are friendly affairs with good speakers. Some are extra good, when everything clicks, and some have that little bit more that makes them special. The Spring Meeting was just that – special. And it was the easy and relaxed personality of Kaddy Lee-Preston, the weather forecaster from BBC South East, that bound it all together and drove it to its success.

Kaddy told the audience – which numbered nearly one hundred – about how her interest in weather early in her life guided her towards a career in the direction of the science of quality forecasting. We all now know that she has achieved recognition as the engaging lady who mostly gets the predictions of tomorrow's sun and showers right and it was great having her with us to tell us about the highs

and lows of her path towards her success. It is always a pleasure to see her on our television screens and it was interesting to learn how the information on ambient weather conditions is gathered from land, sea, air and satellite sources and collated to create what is now an increasingly reliable forecast of things to come. The talk was, well, atmospheric!



Kaddy Lee-Preston with Derek Johnson, Chairman of The Pembury Society



Parish Council Chairman Sarah Clarke in discussion with Kaddy Lee-Preston

granted the efforts of those who do much to ensure the smooth operation of a Society such as ours and this was a small gesture of the appreciation of the members.

Derek Johnson

Cycling is her hobby and she travels considerable distances each year in aid of a charity, which is Macmillan Nurses for Cancer Relief. In the not-too-distant future she plans to take an adventurous cycling journey in Brazil to raise funds for this same cause and has promised to return to tell us about her experiences.

During the evening a presentation was made to Ken Watts, the Membership Secretary of the Society, as a thank-you for all the work he has done over the years. It is easy to take for



Peter Willard Conservatory Specialist

Your Local Supplier of Top Quality

UPVC Conservatories. Any size and

many different styles.

Just call *NOW* for a Free Estimate

...A Complement to Your Home

Telephone no. 01892 824736 Mobile no. 07950 120341

Burtons Pembury's Solicitors

- ★ Full Range of Legal Services
- ★ Prompt Efficient Friendly Service

The Tyled House
23a High Street
Pembury, Kent TN2 4PH

Tel (01892) 824577

SNIPPETS

Fete on the Green 2 - 5pm Saturday 10 July – NOT TO BE MISSED!

Following the Musical Picnic on 12 June, the Parish Council is organising the next of its annual events – the Fete on the Green. All the usual attractions (live music, strawberries, teas, cakes, games, a grand draw raffle, barbeque, ice cream van, children's rides, stalls, competitions) plus Gemma Humphries, the weather forecaster from Meridian Television, will be there to open the fete at 2pm. Profits will be split between local charities. A great afternoon for all the family and a chance to meet up with friends and neighbours and catch up on village gossip! It's all happening on the village green . . .

If you are a local business and would like to get some publicity by giving a raffle prize, Parish Clerk Barbara Russell will be very pleased to hear from you (tel. 823193 9am-1pm or answerphone; email pemburypc@pembury.org).

Bruce Ballantine

Some of you may know that Bruce Ballantine, one of Pembury's Borough Councillors, has been ill and is now recovering from a serious operation. We wish Bruce all the very best and hope he is back to full health soon. In the meantime, his Liberal Democrat councillor colleague David Mills (tel. 825577) and Conservative councillor Paul Barrington-King (tel. 825144) will be very happy to continue looking into questions, complaints and issues on behalf of Pembury residents.

Pembury Flower Festival

The festival will be held in the Old Church over the Patronal weekend of 26/27 June. Exhibitors will be able to prepare displays all day on Friday 25 June; the church will then be open from 10.30am on Saturday 26 June until 4pm (there is a wedding in the church at 4.30pm). Not surprisingly, the theme of the festival this year is "A Country Wedding"! The church will be open for Matins on Sunday 27 June at about 11.30am and will remain open afterwards until the evensong service at 6.30pm.

Refreshments will be available all weekend and any funds raised will go towards the continuing cost of the upkeep of the church. The Flower Festivals have in the past produced the most

beautiful displays of flowers and hopefully this year will be no exception.

New services and businesses in Pembury

Fiona Fennell, a qualified therapist, has started providing reflexology, massage and thermo-auricular therapy at the Headmasters salon in Pembury High Street (tel 822879). Sam's Professional Ironing Services can be contacted on 825914 and the Pembury Handyman (decorating, carpentry, plumbing, electrical, gardening, etc.) also on 825914.

We wish them all good luck in their ventures and are glad to see new commercial ventures starting up in Pembury.

. . . which leads us nicely on to . . .

Pembury Small Business Exhibition

Following the success of the Village Exhibition last September which showcased clubs, groups and voluntary organisations, Pembury Parish Council is proposing to hold a similar event purely for small businesses, typically sole traders and small family businesses, often based in a home office or small workshop. A lot of commercial activity goes on in Pembury and we would like to tell the whole village about it! It will probably be held in October on a Sunday (businesses are too busy working at other times of the week!).

The Parish Office will be sending round a letter inviting interest from those it knows about, but if in the meantime you would like to tell us about your business, please contact the office (tel. 823193 9am-1pm or answerphone; email pemburypc@pembury.org; post 6, The Grove, Pembury TN2 4BU).

Downingbury Place

Melvyn Cole contacted us about this and writes: "In the spring edition of the village newsletter on page 21, "Mary Standen's Archive", a question was asked as to the location of Downingbury Place. Downingbury Place was council housing, built between the wars and situated on the right hand side of Church Road after leaving the junction with Maidstone Road. I don't know when they were changed to become part of Church Road, but they were called Downingbury Place in the early 1950s".

continued on page 23

A BIG THANK YOU!

In the Spring News, we featured an article from Pembury residents Rachel and Stewart Hodson who were planning a Sahara trek to raise money for Macmillan Cancer Relief. They're back and write here about their experience.

Thank you very much for your support of our recent 100km trek across the Sahara Desert in order to raise funds for Macmillan Cancer Relief. This has to be one of our best experiences yet! It was challenging, yet wonderful and enjoyable at the same time! There were 57 participants from all over the UK, supported by a Macmillan representative, 5 tour operator leaders, including a doctor, as well as local Berbers and cameleers (with their camels!). As at the end of the trip, the group as a whole had raised over £153,000 for Macmillan which should help to pay for some much needed nurses as well as funding new buildings and generally helping people and their families after the diagnosis of cancer.



The group worked well together; this truly was a team effort! Those more able helped those that struggled and everyone offered encouragement (and sweets and tracker bars!) to each other. We met some lovely and interesting people and passed many hours chatting which turned what otherwise could have been a hard trudge through some difficult terrain into something more manageable.

We met up with the rest of the group and tour operator leaders at Heathrow Terminal 1 on Saturday 13th March, which is where our adventure began.

After a rather rowdy five hour flight we arrived at Marrakech. With no time difference, we couldn't use jet lag as one of our tiredness excuses! We loaded onto a coach and minibus and started what was supposed to be a 4-5 hour transfer to a hotel in Ouarzazate. Part of this transfer included crossing the Atlas Mountains, which proved to be our first challenge! Our coach got stuck in a snow storm! At one point in order to get the coach going again, we all had to get out and huddle like penguins to keep warm whilst the blizzard was blowing all around us – and we were hardly dressed for arctic conditions!!

We finally arrived at the hotel at 5.45am, ³/₄ hour before we were supposed to be getting up to continue our journey by coach to the starting point of the trek!

We started our trek in the afternoon of 14th March after very little sleep, but we were all still in good spirits. The trek started across a flat open plain before we had our first taste of sand dunes. We arrived at our first night's camp after about three hours, which had been set up by the local Berbers accompanying the trip. This happened on a daily basis and it was lovely every night to come into camp, being greeted by their happy faces and to a cup of mint tea.

We all found a spot in a 10-12 man tent before checking out the facilities!! There was a mess tent and a cook's tent. Most importantly, there were four latrines, covered by little tents to add a degree of privacy!

Every night we spent under the stars. Although it was cold, about 6-7°C, we were snug in our sleeping bags, just looking up at the stars before drifting off to sleep. What a wonderful experience!

Each morning we were up by about 6am with the sunrise and were having breakfast by 7am – a feast of porridge and bread! We all helped to break camp before slapping on the sun cream and doing about 10-15 minutes of warm up exercises, coordinated by one of the leaders.

The camels were loaded with our big rucksacks and we were off! We all had to walk through a people gate, which was to become a routine every time we stopped - just to make sure no one was missing. The days grew hotter and hotter as we crossed spectacular landscapes – firstly across some dunes and then onto a flat rocky plateau, before more dunes, again!

We generally lunched under a tree – salad with a banana or orange and then relaxed before the afternoon trek.

The scenery was changing all the time, and we were extremely lucky because it had rained a few weeks before our trip, the first time in 10 years, so a lot of vegetation had sprung up from nowhere and at times, if you forgot where you were and forgot about the heat and suddenly looked up, you could have been in a meadow in the UK!

All 6 days took a similar format – arriving back at camp between 4 and 6 pm depending on the day's walk. We had time to chill out in our tent and have a “wet wipe wash” before we ate. Our evening meal took the form of soup, followed by a meat or vegetables, with rice, pasta or couscous followed by tinned fruit.

Every evening we had a briefing from the group leaders – talking about what we had achieved and preparing us for what was still to come. Most evenings, our Berber guides and cameleers entertained us with singing and dancing and there were occasions when we tried to join in too!

Hygiene was important and before every meal we held our hands out (like little school children!) for a squirt of alcohol handwash!

Over the course of the 6 days, we encountered temperatures of up to 48°C and walked over a variety of terrain – ranging from hamada (flat stony ground) to small sand dunes of soft sand, to firmer sand and to the top of a 120m sand dune – Erg Chegaga.



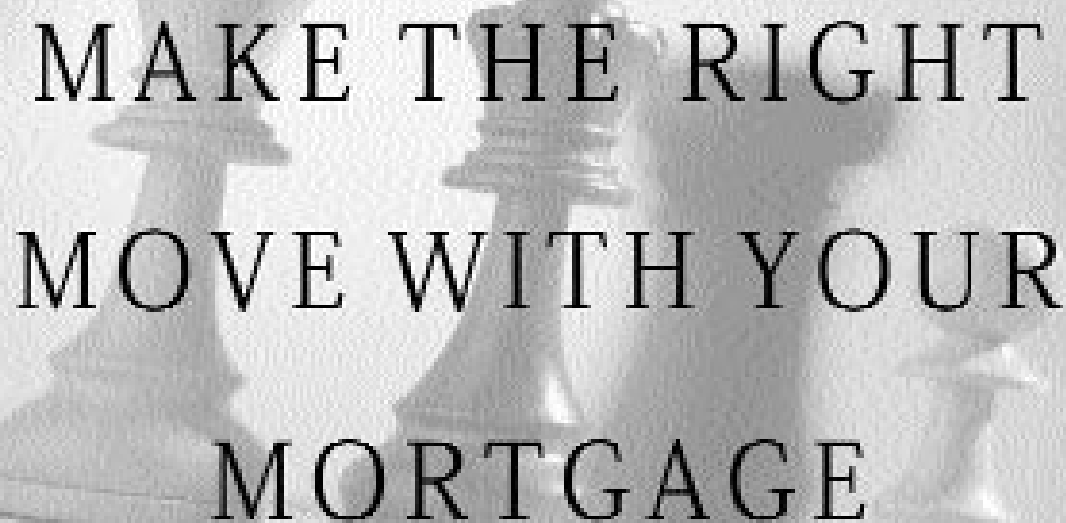
On the last day, just before the final 500m of the trek, we stopped and had an emotional couple of minutes when we thought about what we had achieved and why we were there. The guides left us at that point in preparation to meet us at the finishing line. We trekkers decided that it would be appropriate to come through the finish together – all 57 of us in a long line holding hands - an experience we will never forget and one which apparently bought tears to the eyes of our guides.

After the six days some of us chose to do a further 15km sunrise walk before jumping onto cattle trucks to take us back to the main road where the coach was waiting. Back at the hotel, we were met by singers and dancers to celebrate our return – we felt so special!

After a celebratory meal and ‘thank yous’ all round, we managed to get a few hours sleep before the journey back to Marrakech – much less eventful than our first experience of this route!

Overall, we had such a wonderful experience, one which we shall keep close in our hearts for many years to come.

Rachel and Stewart Hodson



MAKE THE RIGHT MOVE WITH YOUR MORTGAGE

St. James's Place provides a comprehensive mortgage service designed to suit your own individual requirements offering:

- ▣ *Remortgages and Buy-To-Lets*
- ▣ *Exclusive Schemes*
- ▣ *Written Quotations*
- ▣ *Access to most of UK's Lenders*
- ▣ *A comprehensive range of products for first time/next time buyers*

To make the right move with your mortgage call:

01892 823206 or 0207 638 2400

Or write to:

MICHAEL THEOBALD

ST. JAMES'S PLACE, 3 MOORGATE PLACE, LONDON EC2R 6EA

E-mail: michael.theobald@sjpp.co.uk



ST. JAMES'S PLACE
PARTNERSHIP

The St. James's Place Group stands behind and guarantees the advice given by members of the St. James's Place Partnership when recommending any of the products and services provided by companies in the St. James's Place Group.

YOUR HOME IS AT RISK IF YOU FAIL TO KEEP UP REPAYMENTS ON A MORTGAGE OR OTHER LOAN SECURED ON IT.

SNIPPETS *continued from page 19*

Speeding in Pembury

(Dr.) Peter Pattisson contacted us in reply to Derek Johnson's paragraph about speeding in Pembury in the Pembury Society section of the last issue of Pembury Village News.

"For the last fifteen years I have made a point of driving at not more than 30 mph within the bounds of Pembury (with occasional lapses!). I can only think of two or three occasions when drivers behind have been visibly angered by this (and that doesn't worry me). If those of us who feel strongly about this (and I think this is probably the majority of resident drivers in Pembury) stuck to our convictions the problem would be resolved. It does mean allowing enough time – about 5 minutes to get from one end of the village to the other."

Editor adds: "I couldn't agree more! I, too, am quite deliberate at sticking to 30 mph. Sure, it's a bit boring, but worth doing in order to make it safer for everybody."

Pembury author Russell Smallwood

Russell Smallwood of Romford Road has just published his book 'Muddling Through' describing pre-war Germany and Egypt, Sandhurst Military College, the retreat from Dunkirk, victory in Italian East Africa, governing post-war Berlin, farming in Kenya and the return to England. For more information contact Russell on tel. 822069.

A sad sign . . .

We were contacted by an (anonymous) resident reporting that the steps on the doorway to the Village Pharmacy (formerly Ditchetts) had had racially offensive graffiti written on them over the Easter weekend. Your Editor spotted similar on the Pelican crossing control box nearby and on a fence along the High Street. With the 60th anniversary of D-Day on us, it is an embarrassment to us as a community and a nation that anti-Semitic daubs are still appearing in the 21st century.

Hospice in the Weald

CEO John Ashelford would like to hear from any members of the community who would like to become involved in the Charity's local Fundraising Link Group. Following the

retirement of some long serving members John is keen to find new volunteers who would be interested to play a part in fundraising for the Hospice and helping to raise its profile. There are many ways to help so please call Judy on 820531 to fix up a chat.

Football Sessions in August

Following their success at Easter, the Southern Association Football Academy will be running more coaching sessions for primary school age children in August. Times are 10am-3pm between 23 and 27 August. Email Lloyd Biggs at lloyd_b@planet-safa.com or telephone on 01424 433726 or 07711 588272 to find out more and/or book a place.

Twinning with Lompret project

The first meeting will have taken place by the time you read this and we'll report to you about what was discussed in the next News. Around ten people expressed an interest in exploring the project further. If you would like to be involved, do contact Barbara Russell, the Parish Clerk (tel. 823193 9am-1pm or answerphone; email pemburypc@pembury.org; post 6, The Grove, Pembury TN2 4BU).

Kent & Medway Biological Records Centre

The KMBRC was established in May last year and it is based at Tyland Barn, Maidstone, along with the Kent Wildlife Trust. However, it is a separate organization but the Kent Wildlife Trust is one of its partners, along with English Nature, Kent County Council, Medway Council and the Environment Agency. The centre aims to provide a focus for Kent's wildlife and habitat information. We are currently trying to build up a comprehensive database of wildlife information, which will be available to anyone with an interest, including conservation organizations, developers, academics and the general public.

At this stage, we are still trying to get as much data in as possible, so any records of wildlife are very welcome. We're interested in records of literally anything, not just the rare or threatened species, including birds, frogs, foxes, mice, etc. Many people regularly see wildlife in their gardens or on their daily stroll with the dog and

continued on page 25

COMPAID

WHEN YOU think of COMPAID Trust, it is usually because of the distinctive Special Needs Transport often seen around the village and which provides such a valuable service in the Community.

But I wonder how many of you know about our other facilities, including the busy Day Centre, located in the Pembury Hospital Grounds and based around a

variety of computer activities to assist in the rehabilitation of people living with a wide range of disabilities? Or the Office Bureau offering local companies and individuals a variety of services including professional small run printing services such as business and wedding stationery? Or the advice on accessing computers, appropriate softwares and outreach help that is available?

Last summer, Pembury Parish Council generously donated half the proceeds of the Village fete to COMPAID Trust (who also had a stall there). We'd like to thank them and also our wonderful core of volunteers who are an essential part of the COMPAID Trust family. However, we need more help! If you can spare just a few hours a week and are interested in activities such as driving, passenger escorting, helping others use computers (if you like Scrabble, desk top publishing or art, you'll LOVE COMPAID Trust!), computer maintenance, gardening, handicrafts or have office skills – we need YOU!

Phone **Betty Howell** on 824060 to visit COMPAID Trust for a chat.



PEMBURY CRICKET LADIES 2004 CALENDAR

FOLLOWING THE success of the Pembury Cricket Club Ladies 2004 Calendars, more than £1,000 was raised for the Cricket Club. Equipment has been purchased for the Club kitchen and a donation of £407 was presented to the Hospice in the Weald in Pembury on 4 May. The Calendar Ladies thank everyone for their help and support.



Pictured with Richard Snow from Hospice in the Weald are (from left to right) Julie Moxon (June), Rebecca Eastwood (July), Jean Smith (February) and Heather Purdy (August)

SNIPPETS *continued from page 23*

these are just the kind of records we would like to hear about.

Lorinda Jewsbury Support Officer
Email: lorinda.jewsbury@kmbrc.org.uk
Telephone: 01622 685646/685780

Farmers' Market

Pembury Parish Council is warmly supporting the idea proposed by the landlord of the Camden Arms to hold a Farmers' Market (probably quarterly) on the Village Green. The Tunbridge Wells Farmers' Market has been a great success and the Council very much welcomes this type of additional facility for the residents of Pembury.

Advance Notice – Coffee Morning and Sale

The friends of Pembury Parish Church will hold their annual Coffee Morning and sale on Saturday 4 September 2004 between 10am and noon on the Village Green or, if wet, in the Upper Church.

There will be many attractive stalls including cakes, handicrafts, gifts, paperbacks, posh junk, preserves, plants, FPPC items, a tombola and refreshments.

Do please put this date in your diaries and come and support us.

Biddy Willson on 822029 can always collect 'non perishables'.

MY PLOT

I am so behind!

Every time I'm free, it rains/snows/hails and when the sun comes out I'm stuck at work. Disaster – I know there's always 'next year' but at this rate we're going to go hungry (well OK, we'll have to buy it all instead).

I have got a greenhouse full of beans of many colours that hopefully by the time this is read, will be transplanted into open ground. And I've got a cardboard box full of bags of potatoes sprouting in my kitchen that will hopefully also be planted soon. They are already really late so there will be no early new spuds for me. (Altogether now – aaaaaaah!).

At times like these I am glad that one of my plots is permanently planted with fruit. Even if I did nothing, I would still get a crop of strawberries, raspberries, blackberries, currants and gooseberries. My Victoria plum had plenty of blossom this spring so a good crop should follow. Last year there was almost none. The pattern for the past few years seems to be two years 'on', one year 'off'. I'd be interested to know whether other people notice the same.

Thank you to the artichoke fans and non-fans that contacted me about globe and Jerusalem artichokes. Loads of gems of information emerged that revolved significantly around the windiness factor! That aside, it turns out that they may even be poised to become an alternative medicine . . .

If only a use could be found for horsetails. Horsetails are one of the main weeds on the allotments and they are practically invincible. When the nuclear holocaust hits and only cockroaches are left, it'll be horsetails that they are living amongst. The only good thing I've found is that if you leave them to die in a barrow (away from anywhere where they could root back into the ground) they are the quickest plants to rot down that I ever knew. Horsetails make the most crumbly, lovely compost ever. Really!

Caroline Mazzezy



David Salter

Gas & Plumbing Services

Central Heating Installations & Upgrades

Boiler & Cylinder Changes

Breakdowns, Connections & Servicing of all gas appliances

15 Years experience with British Gas

Corgi Registered



EMERGENCY CALL OUTS – MOBILE 07733 107333 – HOME 01892 824481

Kempsters The Funeral Directors

A family business that has served the community since 1882

A COMPLETE 24 HOUR FUNERAL SERVICE

2-4 ALBION ROAD • TUNBRIDGE WELLS

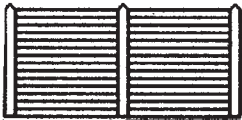
Telephone: 01892 523131

Be thoughtful, take out a
GOLDEN CHARTER
PRE-PAID FUNERAL PLAN



Steffan Keily

FOR ALL YOUR FENCING REQUIREMENTS



All types of fencing supplied and fitted
Close board, panels, palisade, post & rail, gates

FREE ESTIMATES FULLY INSURED
HOME: (PEMBURY) 01892-824048 MOBILE: 07941138060

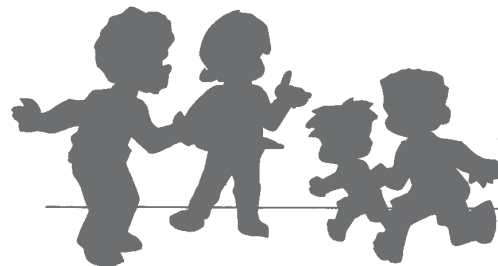
EXPERIENCED CHILDMINDER

Experienced Registered Childminder
has full and part time vacancies. Very
accommodating hours, great flexibility
and a friendly home environment.

Telephone Debbie:

01892 824605

07944 831351



PEMBURY IN THE PAST

Brian Aylard from Highfield Close wrote to us by email about making telephone calls in the 1950s

“**A**S PER OUR telephone chat just now, and after reading Mary Standen’s splendid *Back In Time* booklet, I can (nearly) remember the old telephone exchange at Pembury. In 1950 it was in the old Post Office building next to E R Walker, Drapers, at the top of Lower Green Road.

The building is now the NatWest Bank branch and Walker’s is now the Chinese take-away. I had started working as a ‘Youth in Training’ with the Post Office Telephones and was with the local linesman who looked after the Pembury exchange. This exchange was one of the last still functioning in the country with the old local battery system. This meant that each household lucky enough to have a telephone needed a rechargeable accumulator battery standing alongside the phone.

To make a call there was a wooden box containing an electric generator with a handle which had to be turned to send a voltage back to the exchange to drop down a flap which displayed the caller’s number and sounded a buzzer to alert the operator. The linesman had to visit each subscriber regularly to change the accumulators and recharge them at the exchange. This he did on his bicycle with the accumulators (I think they were called Laclanché cells) carried in a box on the carrier frame over the back wheel. Shortly after this a new exchange was installed in a first floor room at 31 High Street. I remember having to go in the door at the side of the building and up to what is now living accommodation to work in the new exchange. This facility remained for several years until an automatic exchange was built in Hastings Road. This building is still used by BT but is not the Pembury exchange which is now a section of the Tunbridge Wells exchange.”



Pembury Post Office at an earlier time. At the top left you can see the bell sign indicating that telephone service was available from the Post Office

PEMBURY IN THE PAST

Two Pembury boys get together in New Zealand after 60 years of friendship

ROGER GORRINGE, who lived at 38 Elmhurst Avenue, and Tony Pomfrett from 14 (now 2) The Grove, played together as boys and both attended Pembury School under the then headmaster, Mr A H Fenner. On leaving school they both became apprentices at G & F Penn, in the High Street, Pembury. Roger as a plumber and Tony as a carpenter/joiner.

Tony completed his apprenticeship, went off to play soldiers under National Service and then joined the Metropolitan Police.

Roger was not so fortunate and after a serious accident at work, spent a long time in hospital after which he had to retrain as an instrument maker. During this period of time their relationship drifted apart, until by accident Roger saw Tony on duty in Croydon, where he had been posted as a PC.

The friendship has continued since that time and also includes their wives. This has

continued even though Tony and Pam emigrated to New Zealand in December 1964.

The photograph shows Roger and Tony enjoying a 'Wee Dram' whilst talking over old times when Roger and Margaret joined Tony and Pam in New Zealand who were celebrating their Golden Wedding Anniversary on January 30th 2004.



PEMBURY YOUTH CLUB

SINCE THE last issue of the Pembury Village News things have moved quickly!

One evening in March the Youth Club met at the Baptist Church because of a broken lock at Woodside! The young people loved it – the warmth and the toilets worked! They asked if they could meet there permanently.

Consequently an arrangement was made between the Church Leadership, Kent County Council and the Parish Council to make a fresh start for the Club in May. The first night was a great success. Twenty four young people came and two new volunteers have committed their time to be there regularly.

The KCC involvement is two paid youth

workers, Yvonne Powell who has considerable experience as a detached youth worker and Jemma Alexander who has worked with the group at Woodside for the past year.

The aim of the club is to enable the young people from the beginning 'to own their club and to recognise its success is up to them.' The Youth Leaders will be working to enable and equip the young people to run and to lead the club themselves.

It is intended to establish 'The Friends of Pembury Youth', an umbrella organisation with wide representation which will look at strategic development for youth work in Pembury.

Jemma Alexander

(Discussions are in hand about an alternative use for the YMCA building on the Woodside site.)

AMBERSIDE DANCE STUDIO

PEMBURY VILLAGE HALL

Pre-School Creative Movement Classes for Boys and Girls

Ballet, Modern and Tap Dancing Classes for all ages.
 ISTD Grades and Examinations

Please Contact: Margaret King AISTD – Pembury 822574

THE HEALING ART OF

REFLEXOLOGY

Reflexology has been shown to be effective for:

Back pain	Hormonal imbalances
Migraine	Sports Injuries
Arthritis	Digestive disorders
Sleep disorders	Stress related conditions



CELIA PRICE 01892 824333 (Member of AoR)
15 Henwood Green Road, Pembury

CHURCH TIMES

ST. PETER'S CHURCH SERVICES

Upper Church

8.00am Holy Communion

9.45am The Parish

Eucharist
and Junior Church

10.00am Holy

Communion
(Wednesdays)

Old Church

11.30am Matins (except
first Sunday, Holy
Communion)

Evening services as
advertised on Church
noticeboards

CATHOLIC CHAPEL OF ST. ANSELM – PEMBURY

Sunday Mass 10.30am

Holy Days – Vigil Mass
7.30pm

Confessions:

Sunday 10.15am

Weekday Service:

Wednesday – Mass 7pm

PEMBURY BAPTIST CHURCH

We praise God and hear
his
word on Sunday at 10am
and 1st, 3rd and 5th
Sundays at 6.30pm.

We have many activities
during the week for
mums, toddlers, young
people and
senior citizens. Ring the
church office 825590 for
details.

PEMBURY PEOPLE

James Webb – A Champion in the Making

MANY OF US might not be aware that we have a prodigious sporting talent within our community. The motorsport arena has already recognized that fourteen year old James Webb is developing into a future star on two wheels. Recent exposure on both terrestrial and satellite television has reflected the considerable elevation of this talented Pembury youngster. It gives me great pleasure to offer our readers some insight into James's awards and what makes him a 'Pembury Person'.

It was only a matter of time before the young James, and his brother Daniel, became enthused with their father Jimmy's passion for motorbikes. Jim had a successful career on the track behind him and was keen to support his children's sporting ambitions. He recounts "This was never a case of me living out my dreams through my kids. The boys were keen from the start and as a parent it was natural to support their ambitions".

With a considerable investment of time and money and with the ethos that the only place that 'success' comes before 'work' is in the dictionary, the Webb family entered James into the Junior Motocross discipline in 1997. Results soon followed in competition at national level. As part of the East Kent team he gained a championship 4th place. Moving up to the 80 class he then finished 6th in another championship on his Honda. The following years saw impressive performances at Brands Hatch, Mallory Park and Silverstone with many top ten finishes on his Honda GP 125. This class is highly competitive and is televised on five different television channels. James was interviewed on 'Men and Motors' on '2 Wheels 2003' and further media exposure seems certain.

In 2003, as a result of his efforts, James was selected to be a student of the 16 Auto Cycle Union Academy. Victories followed and James was soon on top of the podium at the Bemsee

King of Clubs Championship at Silverstone. At fourteen years old he was not only the youngest rider ever to win this but also with a double victory and a club lap record! In addition, our young aspirant finished a remarkable 4th in the Motorcycle Racing Union Championship competing against many British Superbike RS175 contenders. As a result of this impressive debut James was rewarded with the 'Minnie Grenfell Award' for the most promising future rider. It should be noted that previous recipients of this award included Mike Hailwood, Geoff Duke, Phil Read, and Dave Potter – fine company indeed!



The Webb family are keen to express gratitude for the support of our community in James's

success. Local sponsors have included John Mears, The Royal Oak and AllSigns who collectively have once again proven that Pembury people are there when it matters. Younger brother Dan is already impressing with his exploits on two wheels and any extra sponsorship would be welcomed. I am sure that some of you might be wondering what mum Libby thinks about all this and she states: "This discipline is much safer on the race track. It might come as a surprise but I am not so happy about the dangers of riding a bike on the public highways". James adds: "I am really grateful for the incredible support from Pembury and the surrounding area, not only from sponsors and friends but also from my school. I aim to keep trying my best and one day hope to compete in the World Superbike Championships".

The great Mohammed Ali once said "It's a lack of faith that makes people afraid of meeting challenges, and I believe in myself". James Webb appears to have demonstrated belief and faith when faced with the challenges of his chosen sport. We could have a World Champion in the making and on behalf of us all may I wish him every success.

Paul Barrington-King



RAINBOW INTERNATIONAL

The Carpet and Upholstery Cleaning Specialist

- ✓ Carpets, Upholstery and Rugs
- ✓ Spot cleaning and Stain Removing
- ✓ Fully insured & trained technicians
- ✓ Competitive Prices
- ✓ Leather Care
- ✓ Patio, Deck & Driveway Cleaning
- ✓ Truck-mounted cleaning system
- ✓ Satisfaction Guaranteed

Call now for a free quotation 01892 836940

If we can't clean it no one can!

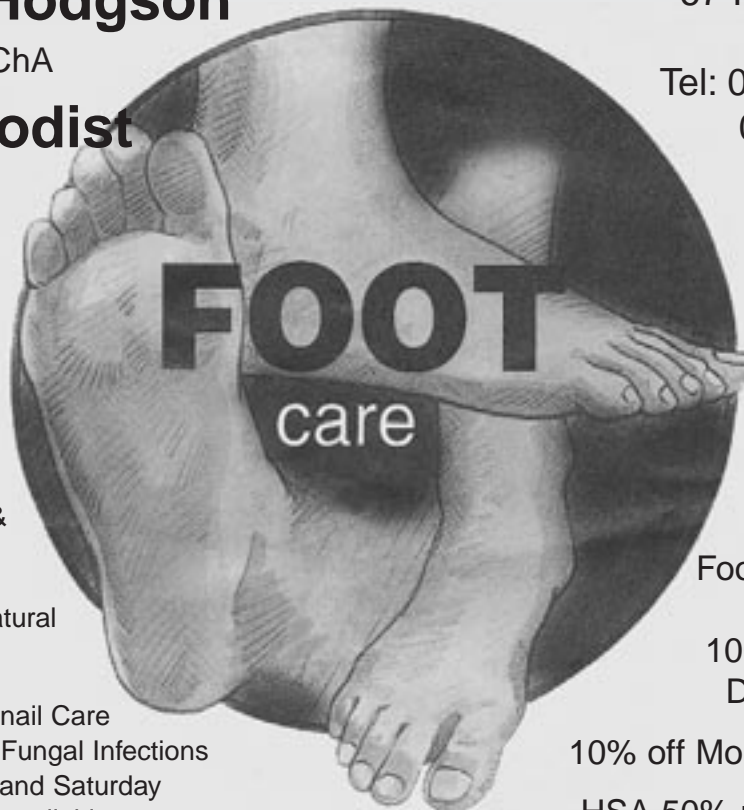
Dawn Hodgson

MSSCh MBChA

Chiropodist



- Professional Advice and Friendly Care
- Diabetic Assessment & Maintenance
- Verruca Treatment, Natural Remedies or Chemical
- Ingrowing Toenail Care
- Treatment for Fungal Infections
- Day, Evening and Saturday appointments available



67 Hastings Road
Pembury

Tel: 07761 583 756
01892 824916

Full range of
Footcare products,
including
100% Natural and
Diabetic Friendly

10% off Mondays over 65's

HSA 50% refund available

GENUINE
FREE RANGE EGGS

ALL HENS GIVEN FULL DAYLIGHT ACCESS TO PASTURE.
FULL RANGE OF SIZES AVAILABLE.
IT'S THE FRESHNESS THAT MAKES THE DIFFERENCE!

LITTLE HAWKWELL FARM
MAIDSTONE ROAD
PEMBURY
(top of Colts Hill)

Telephone: 01892 824184

*'The family Nursery
and terracotta importers
on your doorstep'*

**HIGHEST QUALITY
AT THE LOWEST PRICE!**



KINGS TOLL NURSERY
Maidstone Road on B2160
Tel: 01892 824474

Bedding/Patio Plant Growers : Shrubs & Perennials : Trees : Bulbs :
Bare rooted hedging : Loose seed potatoes, onion & shallot sets :
Specialist in Citrus, Olive Trees & Hardy Palms : Vegetable & Herb Plants :
Hanging Baskets & Pots planted to order or ready made – always available :
Fresh flowers – weekly : Large range of houseplants.

Over 1,000 varieties of terracotta and glazed pots, urns, novelties and
ornaments imported directly from all over the world.

Helpful advice – Carry to car service – Local deliveries – Garden Services

OPEN 7 DAYS A WEEK

JAN'S GARDEN VIEWS

HERE WE ARE in the lazy, hazy, crazy days of SUMMER – and long may it last. We all want to relax in our gardens and enjoy the warmer days so for most of us less garden maintenance is desirable. With forethought and planning this can be achieved and also produce a well kept garden that is a delight to the eye. One good idea is to make a plan of work that would take a limit of one hour perhaps twice a week, especially now we have lighter evenings.

For your lawns, make sure your mower is adequate for the job and regularly sharpened. Consider eliminating small grass areas and cover them with gravel, cobbles or informal paving with spaces left for carpeting plants or small herbs which make an attractive and useful alternative.

Weeding can be a time consuming job, but using your hoe to catch weeds while they are tiny is invaluable. They don't have a chance to set seed and can be hoed out and returned to the soil. Weeds rob the garden of water and nutrients and also harbour many pests and diseases. Ground-cover plants and evergreen dwarf Junipers smother weeds and reduce maintenance. Mulching borders is gaining in popularity. Forest bark is attractive and breaks down slowly, helps to prevent weeds and reduces watering. The initial expense can justify the considerable saving in labour.

Many gardeners are retired and while they may be keen, many find they need to reduce jobs that require bending. Raised beds help considerably and look attractive – strategically arranged. A raised sink garden standing on bricks can give endless pleasure to grow alpines, miniature roses or any small plants of your choice. An old stone sink (these are still about) or a second-hand glazed one would be ideal with a waste outlet for drainage. Cover the bottom with a layer of crocks and gravel and fill with a good potting compost to within an inch of the top. Once planted up apply gravel or stone chippings for an attractive finish and to help conserve moisture round the plants.

Low maintenance evergreen shrubs have become increasingly popular. While evergreens are a useful framework they should be used moderately, as flowers and seasonal changes prevent the garden from looking soulless. Shrubs

can be mixed successfully with herbaceous plants. Many have a sturdy habit and do not require staking such as phlox, penstemons, lupins, alliums, irises and hardy fuchsias to name but a few. The joy of the wonderful flowers they produce surely outweighs the work of a little pruning they require and they reward you by returning year after year!



With the children's summer holidays approaching it is a good time to encourage children of all ages to take interest in the garden. Give them a patch of soil of their own with a trowel and some easy seeds such as sunflowers or nasturtiums. These are quite fast to germinate and grow. Buy a few tomato plants to grow something edible and they will love the watering bit and watching small tomatoes appear. They will get wet feet and make a muddy mess but don't worry, it is that first inkling of interest that is all-important and will stay with them. Another idea they may take to is to make a miniature garden in any old tray. Moss is best to line the tray, pressed down firmly then they need to look outdoors for a list of things such as small stones, old tree bark, twigs, pine cones, leaves, acorns. Then indoors, for any beads, string, plastic animals, a small mirror, marbles, building blocks and anything else that appeals. Leave them to use their imagination and energy, and then see what emerges.

A brief run-down of some essential summer jobs:

- Keep deadheading for continuous flowers on your annuals and perennials.
- Roses need their second fertilizer feed during June or early July and watch for those aphids.
- Take action immediately against pests and diseases as they can build up at an alarming rate.
- During droughts, don't cut the lawn too short and vary the direction in which you cut it.
- Keep your greenhouse well aired and free of whitefly. Crushed garlic placed around helps a lot or grow Tagetes (Marigolds) among plants.

Have a wonderful summer. Happy gardening!

Jan Davies

ROSIE'S RECIPE CORNER

WITH THE summer months coming upon us I thought I would concentrate on recipes that lend themselves to outside entertaining. The first one is an alternative to meat barbecues but with a tropical flavour.

CALYPSO KEBABS

Ingredients for 4 Kebabs

2 courgettes
1 red pepper
2 pineapple slices
2 apricots
4 oz (100g) small button mushrooms
2 oz (50g) butter
2 tsp chilli sauce
2 tsp ground coriander
4 tsp desiccated coconut



Preparation

Cut courgettes into fairly thin slices. Cut pepper, pineapple and apricots in chunks. Thread fruit and vegetables onto long skewers with mushrooms. Melt butter in an old saucepan on barbecue. Stir in chilli sauce and coriander. Brush kebabs with spiced butter and cook on barbecue for 5-8 minutes. Turn occasionally and brush with butter. Sprinkle with coconut before serving. Good served with Rice and bean salads.

Note: Courgettes take longer to cook than the other kebab ingredients so cut into slices rather than chunks for even cooking. This is also a good recipe if you are watching your weight, as they are only 130 calories per kebab.

My second choice is a dish you can make ahead of time. You can use any variety of pasta shapes that you like.

MEDITERRANEAN PASTA SALAD

Ingredients

8 oz (225g) pasta twists
1 large tomato, chopped into large pieces
6 slices salami, cut into halves
12 stuffed pimiento olives, sliced
4 oz (100g) frozen peas, thawed
1 green pepper, seeded and cut into strips
2 oz (50g) diced Cheddar cheese

Dressing

3 tbsp oil
1 tbsp each wine vinegar and lemon juice
2 tbsp chopped parsley
1 tsp garlic salt
3/4 tsp dried oregano
1/4 tsp black pepper

Preparation

Cook pasta twists in boiling salted water according to packet directions – the pasta should be al dente (firm to the bite).

Drain well and reserve. Meanwhile, in

a large bowl, combine remaining salad ingredients, mixing well. Stir in pasta twists. In a small bowl, combine all the dressing ingredients, mixing well. Pour over pasta. Toss, cover and chill for 2 hours. Add cheese. Adjust seasoning, toss and serve.

Note: Good served with plenty of crisp French bread or wholemeal rolls. If you prefer you can replace the salami with ham or for a vegetarian option just omit.

Last but not least a quick easy dessert.

CHERRY TRIFLE

Ingredients for 4 servings

4 slices Madeira or sponge cake, diced
15 oz (425g) can cherries
3 tbsp orange juice or Kirsch
1/4 pint (150 ml) double cream
1/2 pint (300 ml) canned custard
whipped cream and fresh cherries (optional), to decorate

Preparation

Divide cake between 4 individual serving dishes. Drain cherries, reserving juice, and remove stones, if wished. Mix 6 tsp reserved cherry juice with orange juice or Kirsch and drizzle over cake. Top with cherries. Whip cream to soft peaks and mix evenly with custard. Spoon custard mixture over trifles. Decorate each trifle with a rosette of whipped cream and fresh cherries, if using. Chill for at least 1 hour before serving.

Note: For a healthy alternative use thick yoghurt instead of cream, if preferred, and fold lightly into custard. Use Kirsch only for special occasions.

Enjoy the summer months and please send me your recipes so that I can include them in the column.

81 Beagles Wood Road, Pembury, TN2 4HZ
Email: rosielatter@yahoo.co.uk. Tel: 822059

Rosie Latter



FOR YOUR DIARY

Village Coffee Morning – Village Hall Tuesdays 9.30am – 12 noon, full market last Tuesday of the month same times.

WRVS Lunch Club – every Wednesday at 11.45am in the Pembury Village Hall during the school term time

June

- 17 – 19 Pembury Players Summer Production – 2 One Act Plays – Village Hall – 8pm
- 23 Pembury Village Hall Management Committee AGM – Village Hall – 8pm
- 26/ 27 Flower Festival – Old Church – open 10.30am-4pm (Sat) and 12.30pm-6.30pm (Sun)
(all times approximate)
- 27 Pembury Garden Tour – 1.30pm – details from 822030

July

- 1 Pembury Afternoon WI: Eden Entertainers – Village Hall – 2.15pm
- 2 Pembury Evening WI: I Bought it at an Auction – Village Hall – 7.45pm
- 3 Pembury Footpath Walkers – Stonecourt Lane – 2.15pm
- 3 Pembury Gardeners: Summer Show – Village Hall – 2.30pm
- 5 Parish Council Meeting – Village Hall – 8pm
- 7 St Peter's Mothers' Union: 'How does your garden grow?' – Upper Church Meeting Room – 8pm
- 10 VILLAGE FETE ON THE GREEN – 2 to 5pm
- 12 Pembury in Bloom closing date – see enclosed leaflet
- 21 Floral Art – Village Hall – 8pm

August

- 4 St Peter's Mothers' Union: Members' garden party – contact Secretary for details 823123
- 5 Pembury Afternoon WI: Members' meeting
- 6 Pembury Evening WI: Members' meeting
- 7 Pembury Footpath Walkers – Bo Peep Corner – 2.15pm
- 18 Floral Art – Village Hall – 8pm
- 23-27 SAFA: Football coaching sessions for children – Recreation ground – 10am-3pm – call 01424 433726 for information

September

- 2 Pembury Afternoon WI: Rudyard Kipling – His Life & Work – Village Hall – 2.15pm
- 3 Pembury Evening WI: The Crown Jewels – Village Hall – 7.45pm
- 4 Friends of Pembury Parish Church: Coffee morning and sale – Village Green – 10 am
- 4 Pembury Footpath Walkers – Stonecourt Lane – 2.15pm
- 8 St Peter's Mothers' Union: 'Not only in Church' – Upper Church Meeting Room – 8pm
- 9 Walk the Weald – starting from the Hospice at 9am
- 13 Parish Council Meeting – Village Hall – 8pm
- 13 St Peter's Photographic Club – Upper Church 8pm – details from 822030
- 15 Floral Art – Village Hall – 8pm

YOUR REPRESENTATIVES

County Council

Mr Kevin Lynes, 5 Downs Cottages, The Down, Lamberhurst, Kent TN3 8EX. Tel:890922

Borough Council

Mr Bruce Ballantine, 6 Maidstone Road TN2 4DD. Tel: 822156

Mr Paul Barrington-King, 22 The Coppice TN2 4EY. Tel: 825144

Mr David Mills, 125 Ridgeway TN2 4ET. Tel: 825577

Parish Council



Cllr Mrs Sarah Clarke
Little Stanton, Romford Road
TN2 4AY

Tel: 823932

Chairman of Parish Council



Cllr David Coleman
22 Ridgeway TN2 4ER

Tel: 823402

Vice Chairman of Parish Council

Chairman of Planning Working Group



Cllr Mrs Margaret Armitage
2 Cornford Park

TN2 4PN

Tel: 824208



Cllr Hugh Boorman, 52 Henwood
Green Road TN2 4LH. Tel: 823068

*Chairman, Burials Amenities and Allotments
Working Group. Chairman Environmental
Improvement Working Group*



Cllr Richard Crouch
17 Highfields Close

TN2 4HG

Tel: 823164



Cllr Keith Farley
3 Beagles Wood Road

TN2 4HX

Tel: 823440



Cllr Leslie Gregory
47 High Street TN2 4PH

Tel: 822343

*Chairman, Public Relations
Working Group*



Cllr Mrs Alison Morton
2 The Coppice TN2 4EY

Tel: 824938

*Chairman, Pembury Village News
Editorial Working Group*



Cllr Steve Morton
2 The Coppice TN2 4EY

Tel: 824938

*Chairman, Finance & Audit
Working Group*



Cllr Mrs Sally Osborn
34 Canterbury Road

TN2 4JT

Tel: 822726



Cllr Mrs Gillian Pavely
52 Maidstone Road TN2 4DE

Tel: 822605

*Chairman, Christmas Lights &
Pembury in Bloom Working Group*



**Clerk to the Pembury Parish
Council**

Mrs Barbara Russell, 6 The Grove
TN2 4BU. Tel: 823193.

Email: PemburyPC@pembury.org

Cllr Mrs June Crowhurst, 44 Elmhurst Avenue
TN2 4DA Tel: 824873

Cllr Graham Lewis, 16 The Coppice TNB2
4EY Tel: 823459

CRIME IN PEMBURY

ALTHOUGH ONLY a small increase overall from 46 in the previous quarter to 47 for the quarter Jan-March 2004, the figures for crime reported to the police are disappointing in as much that the highest figure – 13 – is for criminal damage, most of which I suspect is committed by people who live amongst us. Most of the damage takes place on Friday or Saturday nights, at a time when most people are in bed.

Unfortunately, in the last week of March, a spate of burglaries in one day stunned several households into realising how vulnerable we can be and I do ask that if you trust your neighbours, every now and then bring them into your confidence and let them know your movements.

In the summer the Parish Council will be spending some of your money on new children's play equipment and we ask for your support in helping to protect these items from the anti-social who continually strive to wreck anything that is good.

Full marks to Pembury Baptist Church for providing a youth centre and I say to all the youngsters, support it, it's good and it's for you. Kevin Lynes, our County Councillor also deserves a pat on the back for his tireless efforts on behalf of the Pembury youth.

Please support the police in any way you can but also let me know of any difficulty in communicating with them.

Remember, don't make it easy for the criminal fraternity.

Hugh Boorman

MONTH	Assault	Burglary Dwelling	Burglary Other	Criminal Damage	Fraud and Deception	Drugs	Theft from Motor Vehicle	Theft of Motor Vehicle	Vehicle Interference	Theft Offences	TOTAL
January 2004	1	3	1	4	1	1	6	1	1		19
February 2004				5	2		2			2	11
March 2004	2	4	1	4	4		1			1	17
TOTAL	3	7	2	13	7	1	9	1	1	3	47
ROAD											
Beagles Wood Road				1							1
Brickfields	1										1
Hastings Road		1	1	2		1	1				6
Henwood Green Road		4		3					1		8
Henwoods Mount				2							2
High Street	2	1		1	6		2				12
Kings Toll Road										1	1
Lower Green Road				2							2
Maidstone Road					1						1
Petersfield				1			2				3
Romford Road							1	1			2
Tonbridge Road			1	1			1			2	5
Woodhill Park		1					2				3
TOTAL	3	7	2	13	7	1	9	1	1	3	47

VILLAGE FETE ON THE GREEN

10 July 2004 2-5pm

To be opened by Gemma Humphries
ITV Meridian weather forecaster

Plants, bric-a-brac, books, local souvenirs and preserves, bottle & tin mine, candy floss and children's roundabout plus games and competitions for all ages, home-made cakes, a tea tent (run by the WI), ice-cream van and a barbecue courtesy of Speights Butchers.

GRAND RAFFLE

LIVE MUSIC BY LOCAL SINGER RICHARD REYN

All profits go to local charities

See your friends, catch up on gossip,
win a prize, chill out...

... It's all happening on the Green ...

VILLAGE ORGANISATIONS

AGE CONCERN

Mrs Sandra Springett. Tel.: 522591

ALZHEIMERS DISEASE SOCIETY

Simon Rooksby, Pineview Day Hospital
Pembury Hospital. Tel: 823535, Ext 3515

BEAVERS, CUBS AND SCOUTS

Mike Cartwright, 16 Cornford Park, Pembury.
Tel: 823235

BLACK & WHITE MARCHING MILITAIRE

Tel: Louise 823097

BOWLS CLUB

Len Birnie. Tel: 01892 681222

BROWNIES AND RAINBOWS

Mrs J. Fichtmüller, 19 Belfield Road. Tel: 825032

CATHOLIC CHURCH

Deacon Bill Eason. Tel: 824133

COMMUNITY WORKING GROUP

Hugh Boorman. Tel: 823068

COMPAID TRUST

Computer Aid for Disabled People. Tel: 824060
Transport for Special Needs. Tel: 823488

CONSERVATIVE PARTY

Terry Cload, 56 Herons Way. Tel: 823966

CRICKET CLUB

Hon. Secretary: Andy Weaver. Tel: 824362

DARBY & JOAN CLUB

Jim Woodhams. Tel: 823990

FRIENDS OF PEMBURY HOSPITAL

c/o Pembury Hospital. Tel: 823535

FRIENDS OF PEMBURY PARISH CHURCH

Chairman: Mrs S. Clarke, Little Stanton,
Romford Road. Tel: 823932

GIRL GUIDERS

1st Pembury Company: Mrs A. Baker,
Tel: 0771 264 3946

HEADWAY

Libby Slattery. Tel: 823120

HOSPICE IN THE WEALD

Maidstone Road. Tel: 820500

KENT COLLEGE

Headmistress: Anne Upton. Tel: 822006

KENT COLLEGE JUNIOR SCHOOL & NURSERY

Headmistress: Anne Lawson. Tel: 820204

LABOUR PARTY

Dave & Sally Osborn, 34 Canterbury Rd. Tel: 822726

LARKFIELD

Principal: Mr Roger Gibson, Cornford Lane. Tel: 822168

LIBERAL DEMOCRATIC PARTY

Bruce Ballantine. Tel: 822156

LITTLE RASCALS (formerly 'Meet-a-Mum')

Alison Burgess. Tel: 515714

NATIONAL CHILDBIRTH TRUST

Co-ordinator: Helen Dunkerley. Tel: 822529

NATIONAL FEDERATION OF THE BLIND, UK

Michael Coggles. Tel: 822705

NEIGHBOURHOOD WATCH

Gill Paveley. Tel: 822605

PEMBURY ATHLETIC (YOUTH) FOOTBALL CLUB

David Gow. Tel: 824119

PEMBURY BAPTIST CHURCH

Pastor David Graham. Assoc Pastor Wayne Alexander
Church Office. Tel: 825590

PEMBURY BRIDGE CLUB

Geoff Plummer. Tel: 824652

PEMBURY F.C. SATURDAY

Mick Waterman, 26 The Coppice. Tel. 824137

PEMBURY F.C. SUNDAY

Phil Craxton, 34 Woodhill Park. Tel: 823928

PEMBURY FOOTPATH WALKERS

N. & K. Franklin, 11 The Meadow. Tel: 823212

PEMBURY GARDENERS

Ann Purton. Tel: 824223

PEMBURY PHOENIX TWIRLERS

Dave or Chris Brett. Tel: 824233

PEMBURY PLAYERS

Chairman: John Hawker. Tel: 824327

PEMBURY PRE-SCHOOL NURSERY

Mrs C. Hughes. Tel: 668514

PEMBURY SCHOOL

Headteacher – Mrs C. Thewlis. Tel: 822259

PEMBURY SCHOOL ASSOCIATION

Linda Bowen. Tel: 825536

PEMBURY SCHOOL HOUSE NURSERY

Teacher in charge: Rosemary Rich. Tel: 825580

PEMBURY SEQUENCE DANCE CLUB

Secretary: Mrs Marion Warren. Tel: 547617

PEMBURY SHORT MAT BOWLING CLUB

Arthur Storey. Tel: 822509

PEMBURY SOCIETY

Derek Johnson. Tel: 823150

PEMBURY STOOLBALL CLUB

Mrs Sandy Rice-Tucker. Tel: 822483

PEMBURY TENNIS CLUB

Mrs S. Smith, 2 Ridgeway. Tel: 822405

PEMBURY UPPER AND OLD CHURCH

Rev. Stephen Sealy. Tel: 824761

PEMBURY VILLAGE MARKET

Sue Boreham Tel: 824385

Eve Fiddimore Tel: 518277

ROTARY CLUB OF SOUTHBOROUGH & PEMBURY

Secretary: Mike Raper. Tel: 822095

ROYAL NATIONAL LIFEBOAT INSTITUTION

Peter Chartres, 54 Woodhill Park. Tel: 823759

SANDRA'S HOUSE

Pre-School Nursery, Mrs S. Toogood, Queens Folly,
64 Lower Green Road. Tel: 824252

SCOUT & GUIDE HQ MANAGEMENT TEAM

Mike Cartwright, 16 Cornford Park, Pembury.
Tel: 823235 and Jackie Fichtmüller, 19 Bellfield Road,
Pembury. Tel 825032

ST. PETER'S MOTHERS' UNION

Secretary: Mrs J. Tompkins. Tel: 823123

ST. PETER'S PHOTOGRAPHIC CLUB

Events Secretary, Carol Wakeford. Tel: 822030

TABLE TENNIS CLUB. John Burleton. Tel: 823250

TREE WARDEN. Caroline Mazzey Tel: 822493

TUNBRIDGE WELLS ACCESS GROUP

Gill Paveley Tel: 822605

TUNBRIDGE WELLS & DISTRICT VICTIM SUPPORT

SCHEME. Tel: 513969

VILLAGE HALL

Manager (bookings): Rachel Windus.

Tel: 822837

WOMEN'S INSTITUTES

Afternoon: Mrs Edna Morris. Tel: 822267

Evening: Mrs Chris Johnson. Tel. 823150

WRVS LUNCH CLUB

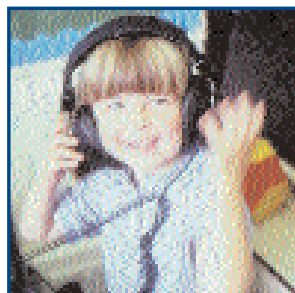
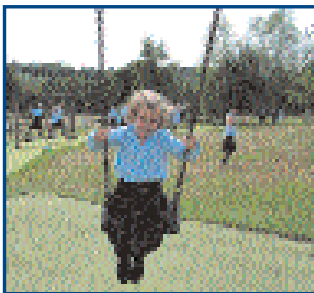
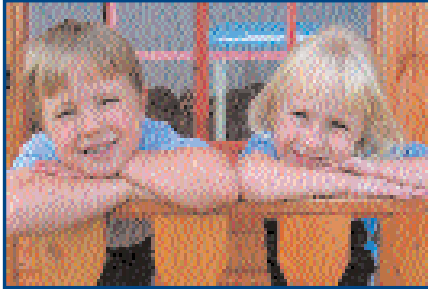
Contact: Mrs Amanda Everett. Tel: 823280

YMCA

Simon Stanley. Tel: 534444

Kent College Junior School & Nursery

Independent school for girls aged 3-11. A Methodist school established in 1945.



- ♦ A happy, lively and caring learning environment where young girls thrive.
- ♦ Main intakes are to the Nursery (aged 3) and Reception (aged 4).
- ♦ Nursery grant accepted.
- ♦ From aged 3 our pupils have specialist teachers for dance, music, drama, swimming and gym.
- ♦ Small teaching groups with highly qualified, experienced staff.
- ♦ After school care facilities.
- ♦ Housed in a modern building with excellent facilities including spacious playgrounds, indoor swimming pool, theatre and sports hall.

KC 
Junior School

Kent College Junior School,
Old Church Road, Pembury
TN2 4AX
Tel: 01892 820204
www.kent-college.co.uk