

PEMBURY

— brought to you by Pembury Parish Council —

VILLAGE NEWS

Spring 2021

Issue 185



Overall Winner of Photographic Competition – Philip Davis. 'Beautiful Autumn colours as sunset approaches' – The Old Coach Road.

FREE

CONTENTS

Chair's Report	3	Aspens	28
Covid Vaccinations – Spring of Hope	5	The Pembury Martyr	29
Virtual Annual Parish Meeting	7	Pembury footpaths	29
Parish Councillor Vacancy	9	Rainbows and Brownies	30
1 st Pembury Scout Group	11	3 Ladies	30
Pembury Wildlife Group	13	The origins of Simnel cake	31
Early spring gardening	15	Recipe for Simnel cake	31/32
Friends of Pembury Parish Church	17	Pembury U3A	32
Pembury Gardeners' Society	17	Pembury Society	32
The Amherst family	17	Lockdown project	33/34
Pembury quiz	19	Bring on the summer and cricket!	35
Photographic competition results	20	Hospice in the Weald	36
Other entries of the photographic comp	21	Pembury recreation ground	36
Annual report	22	Crime report	37
Annual council budget	23/24	Village organisations	38
Census 2021	25	Your representatives	39
My allotment plot	27		

PEMBURY VILLAGE NEWS

C/O Parish Council Office, Lower Green Recreation Ground,
Lower Green Road, Pembury, TN2 4DZ.

Distribution enquiries: Deputy Parish Clerk 01892 823193

Email: deputy@pemburyparishcouncil.gov.uk

www.pemburyparishcouncil.gov.uk

Pembury Village News is published four times a year by the Parish Council, but the views expressed in the magazine do not necessarily represent official council opinion or policy.

Please note: the Editorial team's decision is final on whether or not to publish any item submitted. They reserve the right to edit (that is to cut, précis, alter, correct grammar and spelling) any item published.

The Editor and Publisher, Pembury Parish Council, are not responsible for any opinions or comments made by contributors or advertisers in the Pembury Village News.

CHAIR'S REPORT

Welcome to the Spring edition of Pembury Village News. We're still in lockdown, with it likely to go on for a few more months, but with the vaccination programme continuing apace there is some light at the end of the tunnel. As you will see from the Waterfield House article, they have had 91% of their over 80-year-olds vaccinated, and as I write this the NHS has invited the first 4 groups for at least their first vaccination, and over half a million have had two doses, and they are now calling those in groups 5 & 6 for their jabs. There is hope that all adults will have had both doses of their vaccination by the end of August, and with new mass vaccination centres opening up, along with the incredible streamlined efficiency of local centres, I hope this ambition is realised.

By the time this issue comes out, Boris will have told us of his roadmap out of lockdown, with most parents hoping (and praying) that children will return to school on March 8th. I am lucky enough to have secondary school children who do all of their lessons online via Teams or Zoom, but my heart goes out to those parents who have had to become teachers over the last year, perhaps some will decide to take up teaching as a career? Or perhaps it has put others off for life..... either way I salute all of you. I am hoping for a summer where we can meet up with friends, inside (oh the luxury!), or go out for a meal, or just to the pub for a drink. It seems like so long since the first lockdown, and although we had a brief respite last summer, it really does feel like life has been on hold for a year. If you are finding it tough, please do reach out to one of the support

groups available, you can call Samaritans on 116 123, or send a free text "SHOUT" to 85258 and someone will call you back within 5 minutes. Alternatively, you can call the local NHS urgent mental health helpline, Kent and Medway on 0800 783 9111. They are open 24 hours a day, 7 days a week. Please do seek help if you are struggling, you really are not alone.

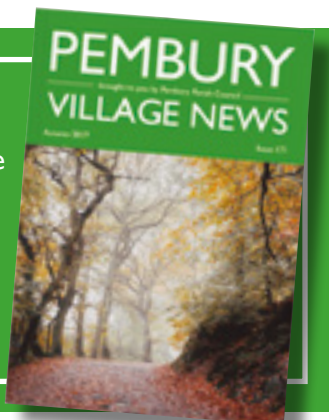
Our Annual Parish meeting WILL go ahead this year, either virtually, or if allowed, in real life! We are awaiting Government guidance on this, and will keep you updated through our website and Facebook pages.

Finally, it was so lovely to see all the effort you made with Christmas lights and external decorations; they really did look amazing. Looking forward, although it is a few months away, now is the time to start thinking about "Pembury in Bloom". We are updating the categories, and can always introduce new ones to suit the colourful displays around the village! There will definitely be ones for hanging baskets; small front garden; large front garden; most colourful display; most varied display and I'm tempted to include a category for best insect friendly garden! I look forward to seeing Pembury blooming over the summer months. Kind regards.



COPY DEADLINE FOR NEXT ISSUE

Any news items/articles/photographs for possible inclusion in the next issue of this magazine must be forwarded by **1st May** to the Parish Office, Lower Green Recreation Ground, Lower Green Road, Pembury, TN2 4DZ; deputy@pemburyparishcouncil.gov.uk





Established for over 40 years in Kent.

01892 824577 pembury@burtons-solicitors.com

Tyled House, 23A High Street, Pembury, Tunbridge Wells, TN2 4PH



As a personable law firm we are able to get to know our clients and tailor our expertise to meet their requirements. Our excellent staff are approachable and easily available to our clients; looking after matters promptly and efficiently.

Our Services

Residential Conveyancing – Commercial Conveyancing – Family Matters

Equity Release – Elderly – Wills– Powers of Attorney – Probate

Debt Collection – Estate Planning



Burtons Solicitors is authorised and registered by the Solicitors Regulation Authority:
Also at: Suite 1, Peach Business Centre, 8 Chestnut Ave, Walderslade ME5 9LL -SRA No. 625445

COVID VACCINATIONS - SPRING OF HOPE

2020 has been a year that most of us would like to forget but it will be etched in our memories. However, 2021 brings hope – a hope that the Covid vaccine will turn things around so that we can enjoy our freedom, relationships and health amongst everything else. Waterfield House GPs want to reassure the residents of Pembury (and wider) that even though Covid-19 is here to stay with us it won't be the same as it was in 2020. We strongly advocate and encourage that if you are invited for the vaccine then please do have one, prioritising it over everything else.

The vaccine could be administered to most individuals irrespective of ethnic or cultural backgrounds. We urge you not to heed to any misinformation especially via social media. For reliable information on Covid and Covid vaccinations, please visit [nhs.uk](https://www.nhs.uk) or [gov.uk](https://www.gov.uk) website. Please also beware of the scammers asking for your personal details. We have collated information on the 'News' section of our website around Covid vaccinations which you may find helpful.

As of 31 January, we had 91% of our over eighties, most of the residents and staff at Cornford House and Hazeldene House along with health and social care workers, vaccinated with at least the first dose. We are currently vaccinating those over 75 years of age. Please may we take this opportunity to ask you not to call us up regarding the vaccination programme. Either visit our website for details or follow the instructions given to you via letter or phone as it deters patients who need health care if the phone lines are busy.

We are very grateful to those amongst the Pembury residents who have volunteered to marshal at the vaccination centre at Tunbridge Wells Masonic Hall.

For now 'Stay Home, Stay Safe'.

GPs at Waterfield House Surgery
(Written on 9 February 2021)

UK CORONAVIRUS SCAMS

Action Fraud **Cyber Aware**

Coronavirus: vaccine scams **i**

- In the UK, coronavirus vaccines will only be available via the NHS. You can be contacted by the NHS, your employer, a local GP surgery or pharmacy, to receive your vaccine.
- **REMEMBER:** The vaccine is free of charge. If you are asked to pay for the vaccine or asked for your bank account or card details, it is a scam.

Learn more: actionfraud.police.uk/vaccine

OFFICIAL

#coronavirusfrauds



The Reliable and Professional Service with the
Personal Touch

Caroline Milwidsky

Accounting Bookkeeping Payroll and PAYE National Insurance Self Assessment
RTI Compliance Management Accounts Corporation Tax Budgets and cash flows VAT

???? How much time do you spend on your accounts rather than running your business ????

Not only can we prepare your annual accounts and deal with the tax, but we can also help on a day by day,
week by week, monthly or quarterly basis.

Our clients include Self Employed Sole Traders and Limited Companies across a wide
and varied range of businesses.

Contact: Caroline Milwidsky Tel: 01892 891220 - Mob: 07885 249968

Email: c.milwidsky@bteconnect.com



*J & D Francis
Plumbing and Heating*

• *Commercial and Domestic Installation, Servicing and Maintenance*

- Natural Gas
- Oil
- LPG
- Bathroom Installations
- General Plumbing
- Emergency Breakdowns



James: 07584 284875

Daniel: 07775 851716

james.francis@jdfplumbing.co.uk



Pembury Parish Council's

Virtual Annual Parish Meeting



**Government guidance
awaited - details to follow**

**Please check our social media,
website & notice boards for
more details**

www.pemburyparishcouncil.gov.uk



Dawn Hodgson MSSCh MBChA
Chiropodist

HCPC Registered - Home Visits

- Professional Advice and Friendly Care
- A Broad Range of Chiropody Services Available, Including:
 - Verruca Removal
 - Ingrowing Toenail Treatment
 - Fungal Infections
 - Corn Treatment and Removal
- Expertise in Diabetic Assessment & Maintenance

Day and evening appointments are available - Discount for the over-70s
Simply Health 50% refund - Police checked for your reassurance

T: 01892 824 916 M: 07761 583 756

E: dawn756@live.com

www.pemburychiropodist.co.uk

7 Greenleas, Pembury, Tunbridge Wells, Kent, TN2



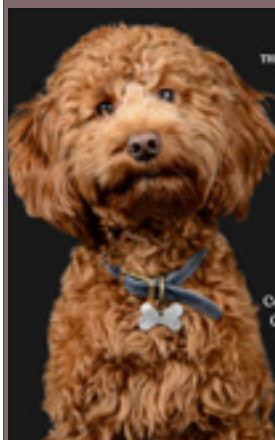
SCRUFFY PAWS

where your dog is treated like family

Follow us on Facebook for offers and to book online!



Scruffy Paws Dog Grooming



THE BEST DOG GROOMER IN TOWN!

Scruffy Paws is a professional & friendly dog groomer based in Pembury, specialising in small & medium dogs.

Contact: Harriot Sinclair
City & Guilds Qualified
Tel: 07750 184992



Book your dog in for a groom today - shiny coat & wagging tail guaranteed!



Pembury, Kent

personal touch computers

www.pt-c.co.uk

networking



Home and business IT

Up front costs, no unexpected hourly fees

security



Laptops/custom PCs

Wireless / ADSL / CABLE installs, helpful advice

reinstallation



Callouts available

Business hours / evenings and weekends

upgrades

Aaron Taylor 07545 996 410

email – aaron@pt-c.co.uk

PC/server builds

repairs

Parish Councillor Vacancy

Could you provide a voice for people living in Pembury?

If so, why not think about joining the Parish Council as we currently have a vacancy.
We are an active council looking for enthusiastic people to join us!

What does a Parish Councillor do?

A councillor's primary role is to represent their parish and the people who live in it. As part of a local Council, you will work with Council staff to run local services, influence the long-term development policy and improve the quality of life and the environment in our local area.

If you have some time to spare and want to get involved in the future of Pembury, then please consider the role!

An application form and more information is available from the Parish Council website:

www.pemburyparishcouncil.gov.uk
or please get in touch with the Parish Clerk.
clerk@pemburyparishcouncil.gov.uk



R Goode Plastering
All plastering & Rendering works

15 years experience Contact for free quote



1 Herons Way
Pembury TN2 4DH
Tel: 01892 319853 Mobile: 07900 907445
E-Mail: rgoodeplastering@hotmail.co.uk

Unlock your next move
with BarnesKingsnorth



**FOR LOCAL KNOWLEDGE AND
EXPERTISE, CALL**

YOUR

PEMBURY AGENT

01892 822880
www.bkestateagents.com




New Showroom Open! Viewing by Appointment

THE BEST KEPT SECRET IN PEMBURY!

Penumbra Blinds have been Manufacturing & Supplying Internal Window Blinds & Curtains, External Awnings and Canopies to residential and commercial customers from our facilities on Romford Road since 1991!

Your truly local company for any of the following:-

- ◆ All types of Internal Blinds including the new Vision™ roller blind system
- ◆ Friendly Service
- ◆ External Blinds, Awnings, Canopies & Gazebos
- ◆ Expert Advice
- ◆ Solar Control & Security Window Films
- ◆ No Pressure Sales!

Visit us at the far end of Romford Road and find out why we've been here so long!



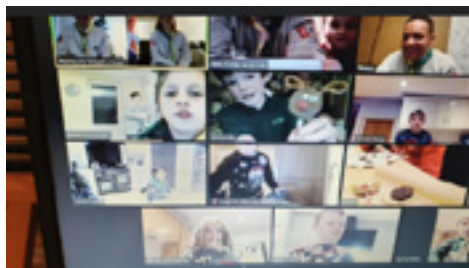
Tel: 01892 825522 E-mail: info@penumbrablinds.com

www.penumbrablinds.com

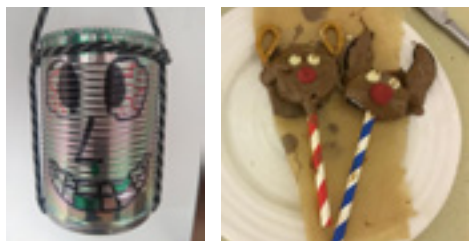


Unit 2 Albans Farm, Romford Road, Pembury, Tunbridge Wells TN2 4BB

As we move into 2021, for reasons everyone is aware of, little has changed regarding our ability to meet face-to-face. Undeterred, our dedicated leaders and fabulous young people continue to make the best of it by meeting online via Zoom.



The Beaver colony continues to have fun every week. Reflecting on last term we packed in a lot of new and interesting activities and invested three new members, all online! Many of the activities went towards Challenge badges. One of the highlights was marking Remembrance Sunday by getting into our uniforms and taking part in a two-minute silence outside our front doors. During the term we also did some cooking and made some 'armpit fudge' (probably best to Google that one!)

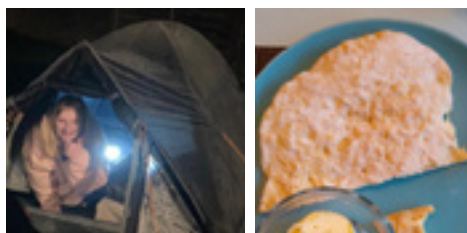


We had some festive fun in the run-up to Christmas, making Santa 'beard' advent calendars and decorating our own mini Christmas trees. Fun was had with some online movie quizzes and scavenger hunts. Although we wish we could all meet face-to-face, strike up a campfire and play outside, the Beavers continue to be enthusiastic about this new way of Scouting. The leadership team is very proud of all the Beavers and we are so grateful to the parents for their continued support.

Our Cubs have enjoyed a variety of activities, games, and quizzes. Notable highlights include; code cracking, movie quiz, origami and a Christmas craft activity – reindeer Orio pops. We have not forgotten our Scouting traditions either and all learned how to tie a 'barrel hitch' knot and made some hanging containers with it! We are massively proud of our Cubs who continue to turn up – 'virtually' each and every week to join in. Thanks also to the parents who continue to support Scouting during this difficult time.

Pembury Scouts have been meeting virtually on Zoom each week and continue to enjoy meeting up virtually whilst we remain in lockdown. Each week our leaders come up with innovative ways of providing scouting online, from fun games such as 'Minute to win-it' and 'Taskmaster' challenges to more Scouting based activities such as Map Symbol Bingo. A particular favourite evening had the Scouts making flatbread and butter live whilst on Zoom, with some surprisingly good results! We have even managed to hold an investiture ceremony online for two new Scouts into our troop. Despite all the fun we are having on Zoom, we are all really looking forward to resuming face-to-face Scouting sometime in 2021!

In mid-January, our Piranha Explorers unit attended 'Virtual Winter Camp'. Traditional Scouting activities were enjoyed and shared online via Zoom, such as fire lighting, cooking campfire donuts with hourly challenges. Our unit came in the top 100 teams in the country. Two hardy Explorers (Lily and Andrew) even spent the weekend camping out in tents in their gardens (very cold!). Great fun was had by all, including a campfire via Zoom. Well done to all those who took part.



Call for a free no obligation estimate



R.W.R. Vehicle Body Repairs

30 Years experience with a personal professional and prompt
service at an affordable price

Trade Prices 07842122768

WESTWOOD BUILDERS

26 Westway, Pembury, Kent. TN2 4EX

Office 01892 325378 Mobile 07710 895598 E-mail; paulbuild444@gmail.com



Friendly Local Professional Builder, with over thirty years' experience.

Kitchens, Bathrooms, Loft Conversions, Extensions, Design Service Available.

Call for a no obligation quote.

What about a “Pembury Wildlife Group”?

We are fortunate in Pembury to be surrounded by varied and beautiful countryside. There are miles of footpaths in the parish going through habitats including woods, orchards and open grassland. There are many streams and some are piped to the Pembury reservoir which collects water for supplying the Tunbridge Wells area. From the higher ground we have some great views across the Low and High Wealds.

Much of the rural surroundings to the village are designated as an “Area of Outstanding Natural Beauty” (AONB) and some parts are in the Metropolitan Green Belt (MGB). These categories give a degree of protection but they can be adjusted if pressures such as housing development override. This makes it important to try and record what wildlife, of all forms – plants, insects, mammals, amphibians, reptiles etc. are living alongside us. Such information is vital for officials and planners to properly assess proposals and to support or add protection where it is needed. Also it could provide a valuable educational resource possibly accessed via the Parish website and social media.

Some other villages have started Wildlife Groups to collect data and set a base line against which changes can be measured. Climate change is having a big effect locally and nationally and is a growing concern. Increased population and extra traffic are adding to the pressures.

A wildlife group could bring together a spread of residents both young and old. There must be a wide range of skills within the village. Bird watchers and insect enthusiasts will be vital but also photographers, I.T. experts and those with other specific interests or just with a general empathy for the countryside.

At present a Pembury Neighbourhood Plan is being prepared for the next 20 years and the Environment and Green Spaces working group is looking at a variety of relevant issues. A Pembury Wildlife Group could provide a wealth



of valuable information from the community to help preserve and enhance the natural world around us.

The next step is for the working group of the Pembury Neighbourhood Plan to decide. The Marden Wildlife Group is a local model started only a year ago and with much information already collected and a superb publication as a result. They have formed a core “Whats App” group for those strongly involved – including some local farmers, an ornithologist, an entomologist, a botanist and a photographer. A Facebook link has also been set up for everyone interested and a website may possibly follow. They have forged links with local environmental organisations such as the Kent Wildlife Trust and have had some advisory visits where Covid restrictions allowed. Main activities last year included moth trapping and bat detecting as well as recording bird species and meadow flora.

For further information and to get involved, please email ndp@pemburyparishcouncil.gov.uk

COMPUTER REPAIRS

HOME PC'S • LAPTOPS • SERVERS
INSTALLATIONS • MAINTENANCE • BUSINESS NETWORKS

Free estimates provided within 24 hours.

Recently moved to new workshops in PEMBURY.

Ring or call in to discuss your requirements.

**NO FIX
NO FEE**

- MG Computer Services -

"A reputable company established in 1982 with experienced staff"

145B Hastings Road - Pembury - 01892 826130

HAVE YOU CONSIDERED ADVERTISING YOUR BUSINESS IN THE PEMBURY VILLAGE NEWS?

THE TOTAL COST FOR THE REMAINING
THREE EDITIONS IN 2021 ARE:

QUARTER PAGE - £183.75

HALF PAGE - £247.50

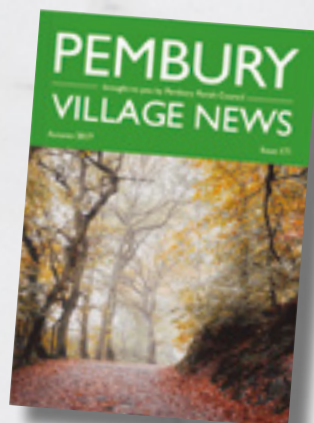
WHOLE PAGE - £375

INSIDE FRONT COVER - £431.25

FOR MORE INFORMATION

CONTACT US ON:

deputy@pemburyparishcouncil.gov.uk

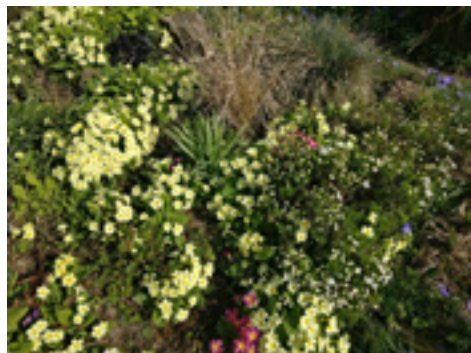


EARLY SPRING GARDENING

At this time of year, the flower garden is starting to wake up from the long winter months.

Days are longer and the earth is slowly warming up, so now is the time to tidy up and prepare the garden for the summer flowering season. Don't get carried away, we will still be having frosts and even snow. You need to make sure that delicate plants continue to be protected and don't be tempted to plant out bedding plants, even if we are enjoying warm Spring weather.

With the warmth, comes the weeds! Work through the beds, removing obvious weeds and pulling out the countless clumps of grass. Look out for slugs – this is the time when they start to emerge and shred your favourite flowers overnight.

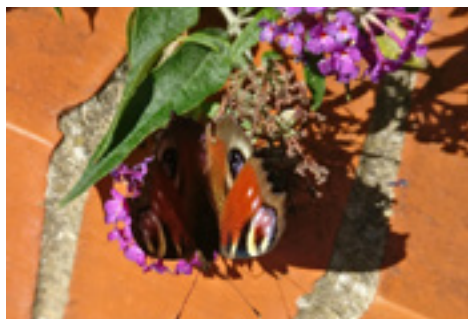


If the ground is dry, give the lawn its first cutting on the highest setting and trim the edges, but if it is too wet to walk on then leave for a while longer. Attempting to cut wet grass now will tear it out in clumps and leave you with soggy patches.

If you have a buddleia in your garden, now is the time to be brutal and cut it back. Don't be afraid, this tough plant can be cut down almost to ground level and will still come back with a wealth of new wood and flowers. Look out for the first buds on the main stem and cut just above them. Buddleia will flower in the Summer and attracts butterflies, bees and ladybirds.

If you are lucky enough to have snowdrops in your garden, you can easily propagate them by digging up clumps, separating them and replanting to fill gaps or to start a new display.

Wait until they stop flowering and the leaves start to go yellow. Plant where you want them



and water in well. They may not look too healthy once you have completed this job but the leaves will eventually die back and the bulbs will establish themselves in their new position.

You can do the same with primroses to create mass clumps of this very pretty Spring flower.

There are some bulbs which can be planted in the Spring which will bloom in the same Summer, as long as the ground is fairly dry. If you plant when it is too wet, the bulbs will rot or the slugs will get them so best to wait until conditions are right. Try Lilies, Begonias, Alliums and Crocosmia.

Finally, March is the time to start sowing seeds, either straight into the soil, or under cover in a greenhouse, conservatory, kitchen window sill or plastic bag!

Visit the garden centre and study the huge range of flower seeds on offer. Read the backs of the seed packets carefully before you rush to buy. Everything you need to know is there and if you follow the instructions, you will be well rewarded in a few months' time with your own home-grown bedding plants.

Cllr Annie Partridge



Nina Welch

MIDLIFE COACH
FOR WOMEN



*Love who you are...
be excited about your future*

I CAN HELP YOU TO...

- prioritize self care.
- connect with who you actually are.
- recognize, confront and overcome the things that hold you back.
- grow your confidence, creativity and spirituality.



Believe in and invest in yourself

Book your **free discovery call**
on **07761 252062** or visit
www.ninawelchcoaching.com

Service - Install - Repair



DTH  **01892 824763**
Heating **07760 425099**

dth.heating@btinternet.com

f Pembury Parish Council



Pembury Parish Council is on Facebook

Stay in the know at
**[facebook.com/
pemburyparishcouncil](https://facebook.com/pemburyparishcouncil)**

You can also find us on Instagram!

Phil's Kitchens



No need to change your whole kitchen.... Just do a kitchen refurb!

- Replace worktops with high quality worktops (many colours to choose from)
- Replace your sink/hobs/oven/ washing machine, dishwasher, cabinets, doors and handles
- Gas/Electric/Plumbing compliant
- Many happy customers in and around Tunbridge Wells

Phone Phil 07773723646

FRIENDS OF PEMBURY PARISH CHURCH

The plans for last year's Heritage Open Day Exhibition during September of weddings in the Parish Church were, like so many things, affected by the pandemic. It is hoped to stage it this year and to add information about those sometimes overlooked, but important participants in weddings – the organist. If you have photos or memorabilia of weddings and/or information about the organists who have played at the Parish Church, please contact Margaret Pettitt. Tel: 01892 822905.

PEMBURY GARDENERS' SOCIETY



The restrictions required for the pandemic have made all the Society's normal activities impossible, causing the cancellation of all three shows, the plant sale, the monthly flower arranging meetings and any possible outings in 2020. The Spring/Daffodil show which usually takes place at the end of March is almost certainly also not possible.

Perhaps we may hope to be able to hold our Plant Sale at the end of May and the Summer and Autumn shows in June and September respectively. Members' subscriptions for 2020 are to be carried over to 2021.

After all the extra gardening that has taken place during recent months, we can look forward to bumper entries in the shows when they resume!

Margaret Pettitt

THE PARISH CHURCH OF ST PETER - THE AMHERST FAMILY

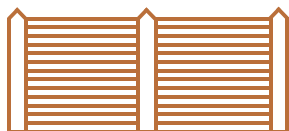
I have mentioned before what an influential and powerful family the Amherst family were. They lived for many years at Bayhall and certain areas and property took their name. When we were kids there always used to be a Knight's helmet mounted on the rear wall at the nave of the Old Church and in those days the church was never locked and the helmet was always visible. Sadly, the helmet was stolen and the church has remained locked ever since other than for church services.

Thankfully a local historian very kindly gave me a document that contained a picture of that helmet which had been the property of Richard Amherst and there are two slabs in the sanctuary of the Church Floor; one to Dorothy Amherst 1654 and one to Richard Amherst 1694. Whether the helmet had ever been worn in battle I do not know but I will try and find out.

The records show details of the longest serving vicar, Mr Richard Woodward, who from 1677 was incumbent for 54 years, right through from Charles II to George II, seeing six sovereigns and one revolution.

Hugh Boorman





Steffan Keily

FOR ALL YOUR FENCING REQUIREMENTS

All types of fencing supplied and fitted
Close board, panels, palisade, post & rail, gates

FREE ESTIMATES FULLY INSURED

HOME: (PEMBURY) 01892 520150 MOBILE: 07941 138060



Pembury Dental Surgery

- New Patients Welcome
- Children seen under NHS
- Full range of preventative treatments
- Cosmetic dentistry (veneers, crown & bridgework)
- Tooth Whitening
- Implant Dentistry
- Digital x-ray
- Direct access to Hygienist
- Relaxing, friendly environment

Dr.Nelis du Plessis B.Ch.D.(Pret)
Emily Mann Hygienist

Address: 67 Hastings Road, Pembury, Tunbridge Wells, Kent, TN2 4JS
Tel: 01892 823044 - Email: info@pemburydentalsurgery.co.uk
Web: www.pemburydentalsurgery.co.uk

Committed to Quality Dentistry



PEMBURY QUIZ

The answers to all the questions can be found by walking around the village! Answer the questions below and add together the digits of the answer. The number corresponds to a letter, e.g if the answer is 1960, add $1+9+6+0$ which is 16 and the 16th letter of the alphabet is P.

When you have all the letters unscramble them to spell out something yummy to do with Easter.

1. On the Historic Map of Pembury on the village green what number is Springrove Mill?

2. How many flagpoles hang on the front of The Camden Arms?

Take away 1

3. In which year was the nave of St Peter's Old Church completed?

Take away 3.

4. In the cemetery behind the school is a gravestone to the memory of Paris Kirton Flanders Foot. How old was he when he died?

Take away 70.

(Hint. You don't have to walk on the grass to find it!)

5. What is the A number of the road from Pembury to Paddock Wood?

Add 1

6. In which year did the King William IV first open as a pub?

Take away 2

7. On the Historic Map of Pembury what number is Pembury school?

Add 3

8. According to the brass plaque outside the Almshouses opposite St Peter's Upper Church, they were given by Sir Charles Amherst in which year?

9. The drinking trough on the green is dedicated to the memory of Margery Polley. In which year was she martyred?

Take away 7

10. What is the last number of Pembury Parish Council's telephone number?



PHOTOGRAPHIC COMPETITION



Highly Commended Favourite View - John Vale-Taylor; taken from Amhurst Bank - 'pastureland for athletic sheep'!



Highly Commended Notable Buildings – Nicola King – St. Peter's Church – 'a focal point for the community'



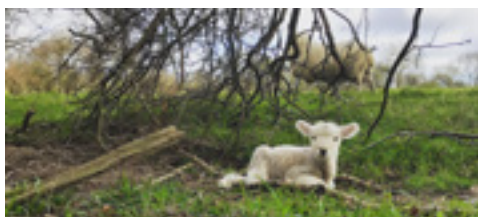
Debbie Garrett Pippins Farm Apple orchards: "My favourite place to walk, especially in Spring. It's so pretty when the apple blossom comes out."



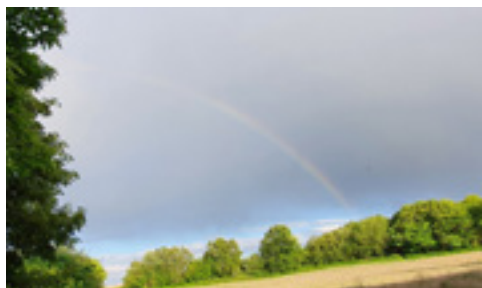
Peter Chartres – Stile ‘epitomises hope of new & brighter things to come (cross the stile and follow the path!)’



Nicola King, ‘Slowery Woods near the Bo Peep end of the village at the height of bluebell season’.



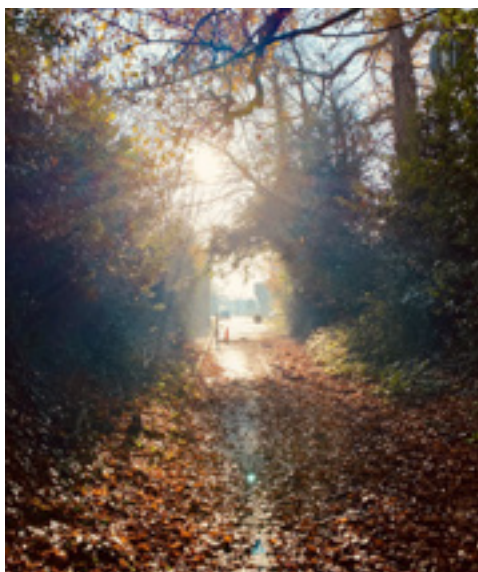
Lambs in spring – Sophie McArthur. This is near Kent College. ‘It again reminded me that the world is carrying on, even though everything else had stopped’



Rainbow – Ahmed Elgamal ‘Rainbow over the field’



Resting place – Peter Chartres – ‘A welcome resting place to admire the view on a long country walk’



Sophie McArthur – the bottom of Church Road. ‘Light at the end of the tunnel’

ANNUAL REPORT 2020/21

Well, what a year 2020 turned out to be! Most of our events were cancelled and our normal activities were put on hold. The Parish Office was closed to members of the public and office staff continue to work from home. The Parish Council were pleased that so many members of the community pulled together to support those in need in the village. Nevertheless, Pembury Parish Council has had another busy year maintaining its facilities and delivering its services to the village!



Here is a snapshot of our work this year:

FULL COUNCIL

- We had to learn how to use Zoom for our meetings and are now very proficient!!
- We sadly said goodbye to Shelley Harris who had served as councillor for 7 years.
- We also welcomed Joe Pearce to the Council, and he sits on the Planning & Highways Committee.

COMMUNICATION & EVENTS COMMITTEE

- The quarterly village newsletter, the Pembury Village News continued and was delivered to every house in the village.
- Following the problems with the Christmas lights and residents helping to fund a Christmas tree in 2019 at the last minute, this year we were determined to pull out all of the stops! Everyone agreed that the display was a welcome sight. Many favourable comments were received either directly or via the Pembury Facebook pages.
- A new Community Grants Fund was distributed to some deserving community groups to help with developing their facilities.
- Work began to create a Youth Council so young people could have a voice. Hopefully, this will gain momentum when we can all meet again.

NEIGHBOURHOOD DEVELOPMENT PLAN

- Volunteers were recruited to join the working groups to help shape the future of Pembury. They are now working hard on various projects throughout the village.

OPEN SPACES COMMITTEE

- We continue to manage the Lower Green Recreation Ground, Woodside Playing Fields, Henwood Green Road allotments, burial grounds, Village Green, Old Coach Road, War Memorial and other open spaces in the village.
- Significant work to improve the condition of vacant plots has resulted in a big increase in new tenants at the allotment site!

PLANNING & HIGHWAYS COMMITTEE

- The committee meets monthly and reviewed and responded to over 60 planning applications in 2020.
- The village continued to object against the Hendy Motor Village proposed off the Pembury Road. Working with our Borough Councillors we were rewarded with a refusal against the application when it was considered at Tunbridge Wells Borough Council.

FINANCE & HR COMMITTEE

- The Finance and HR Committee oversees the Council finances and Human Resources function.
- Our internal and external auditors have again given us a clean bill of health to our accounts and governance arrangements. We were also awarded Quality Council status in recognition of the work of the Council.

ANNUAL COUNCIL BUDGET 2021/22

Working for Pembury People



TOTAL REVENUE
BUDGET £273,131



£228,497
83% of the budget comes from the domestic ratepayers in Pembury. The Parish Council does not receive any portion of business rates nor government grants.



£32,092
12% of the budget comes from fees and services such as burials, advertising and sports pitch hire



£10,300
4% of the budget comes from donations and grants for projects

£2,167
1% of the budget comes from reserves.

What it will cost Pembury residents per average B and D household



£101.06

per year

£1.94

per week

An increase of **£4.04** per year or **7p** per week compared with 2020/21.

We save up some of our money for future projects in the same way you would. These are called "earmarked reserves". We get these reserves either by including them in the precept or by using any surplus at the end of the year. We also have a "General Reserve" as a contingency against future unknown occurrences. As the owner of several large buildings and a huge number of trees throughout the parish we cannot leave anything to chance. Below is a summary of the current reserves held:

Total Earmarked Reserves	£45,020
Ring-fenced reserve: Donation to Pembury Scouts for disabled access to scout hut	£3,214
Covid-19 Hardship Fund	£3,078
General Reserves projection at year end	£57,241



Where the money goes

We maintain public open spaces and the play area in the village, which do not generate income as they are free for the public to use. In normal years we organise free community events throughout the year! We also provide the Christmas tree and lights display on the Village Green. We have started work on a Neighbourhood Development Plan and are making good progress with a team of volunteers from the village.

SERVICES £52K (NET COST £30K)	COUNCIL & ADMINISTRATION £105K (NET COST £100K)	OPEN SPACES £95K (NET COST £87K)	COMMUNICATIONS & EVENTS £21K (NET COST £12K)
Cemetery & burials £25k (net cost £8k)	Council administration £85k (net cost £82.5K)	Building costs £6K	Newsletter & communications £7k (net cost £-2K)
Allotments £4.5k (net cost £3k)	Council offices £9.5k	General Open Spaces costs £78k (net cost £73.5k)	Christmas display £6.5k
Streetlights & street furniture £3k	Professional fees £4k	Floral display £1k	Events & competitions £7K
Civic Amenity Lorry £1k	Loan & bank charges £4k	Playground £10k (net cost £6K)	Youth Council £0.5k
Dog bins £3.5k	Grants & donations £3K (net cost £0)		
Neighbourhood plan £10K (net cost £6K)			
Community project £5K			

If you have any queries or comments regarding the budget please contact **Helen Munro, Clerk, Pembury Parish Council, Lower Green Recreation Ground, Pembury, TN2 4DZ** or email clerk@pemburyparishcouncil.gov.uk.

census
2021

Be a part of Census 2021

Census day is 21 March 2021.

By taking part and encouraging others to do the same, you'll help make sure your community gets the services it needs.



Find out more at www.census.gov.uk



Follow @Census2021



Office for National Statistics

www.census.gov.uk

A4GIP1

Louise Fitzgerald DipPFS EFA Independent Financial Adviser



Your local IFA providing **trustworthy advice**
with a personal touch

- ③ Are you getting a good return on your **savings**?
- ③ Do you need help mapping out your **retirement**?
- ③ Are your loved ones **financially protected**?

- ✓ **FREE** of charge initial consultation - no cost, no obligation
- ✓ **Remote appointments** available - advice from the comfort of your own home
- ✓ **Independent** and whole of market

Get in touch

☎ 07891 039256

✉ louise@horlockholdcroft.co.uk

Horlock Holdcroft Financial Consultants Ltd. is authorised and regulated by the Financial Conduct Authority. FCA number 515774.



MadeleineS Accountants and Taxation Advisors

Tel: 07572 815474
www.mmadeleine.co.uk
davidandmadeleine09@gmail.com

Proactive · Approachable · Timely and Efficient Service

We offer a fixed fee service, catering to sole traders, partnerships, limited companies and charities.

With over 25 years of experience in both practice and industry, David has a wealth of experience as a chartered accountant.

As we emerge from the pandemic that has affected us all, it is about revival and not just survival and about building business back better for an improved quality of life as well.

Contact us to see if we may help you.

We provide an initial free consultation.

Our Services

- Preparation of Financial Statements for companies, partnerships, sole traders and charities.
- Preparation and submission of all related Corporation Tax Returns and Partnership Returns.
- Completion and submission of Personal Tax Returns.
- Provision of payroll services and associated advice.
- Assistance in completion of Vat returns and associated advice.
- Business start-up advice and assistance.
- Bookkeeping services (SAGE, Quick Books, Excel, IRIS, Making Tax Digital).
- Tax planning services (corporate and personal).

MY ALLOTMENT PLOT by Caroline Mazzei

Recently it's been much too wet for digging – the soil gets so stuck on my boots and tools, and it's not actually that good for the soil either. It is however, if doing some strenuous exercise in lockdown is the order of the day, very hard work! I avoid it wherever possible!!

My visits are for harvesting only – there's still broccoli, swede, parsnip, cabbage and chard to pick/dig, and parsley and chives too. My leeks were a tragic failure sadly. But, if you aren't still harvesting - or are a new plotter without a harvest yet - one really useful thing to get sorted now, is your compost heap/s.



There's a lot of variety out there and most people have got something pretty rough and ready. Pallets are a popular choice for attaching four together [fill from the top; tidier but more difficult to dig out] or three together [fill from the front; tends to fall out but much easier to get the compost out when it's ready]. Some cover, some don't. Some use other materials and some have plastic Daleks. The main thing is to have something.

Plants grow in soil, tiny bits of rock, taking millions of years to form. The compost – or organic matter - puts nutrients back in and makes it a lot easier for us to dig. The average mix in nature is around 9 parts soil to 1 part organic matter.

It's really important to keep our soil because



we won't get any more. And it's really important to add organic matter to keep it fertile. So, by composting our weed roots and our scraps we get the perfect solution. And for that extra boost of nourishment, there is the horse poo depot shown in the photo above. For anyone along the top edge who doesn't know, this is opposite the gate to the horses' field. A perfect win-win whereby the horses get mucked out and we get free manure. Add it into the compost occasionally and it will speed up the process nicely!





Make a Difference with a Career at Pembury's Aspens Charities

Have you recently been furloughed or made redundant due to the COVID pandemic, or maybe you're looking for that first step after school or college or a change in career? Local charity, Aspens, may have just the opportunity for you.

With its head office and many services based in Pembury, Aspens is a regional charity that supports children and adults with learning disabilities, complex needs and those on the autistic spectrum.

Formerly known as Pepenbury, the social-care charity provides highly personalised assistance to those it supports and empowers those it cares for to live life to its full potential.

Aspens has a number of residential and supported living services based in Pembury and offers a wide range of flexible employment opportunities, such as support roles, community outreach and positive behaviour support.

Aspens are keen to meet both those with, and without, former social care experience; the most important personal attributes the charity seeks are those who are caring, hard-working and passionate about making a difference to the lives of people with learning disabilities or autism.

The charity offers flexible hours to fit around childcare, family and personal commitments, excellent training and ongoing opportunities for professional development. Aspens also provides an inclusive working environment in which everyone feels valued no matter what their age, race, religion, gender, sexual orientation or disability.

If you'd like to find out more about joining Aspens' dedicated team they would love to hear from you. Contact the recruitment team at: recruitment@aspens.org.uk | 01424 773366 ext. 116

View Aspens' current vacancies at: <https://www.aspens.org.uk/work-for-us>



THE PEMBURY MARTYR

Due to the ongoing Covid lock-down, we have decided to release our film on-line. It will be available on the village website – pembury.org and on The Pembury Channel at [Vimeo.com](https://www.vimeo.com). The film will also be available to share, to download and to add to other collections. We sincerely hope that you will be able to watch our film and we look forward to your feedback. 'The Pembury Martyr' is a village community production.

David Doré, Producer



PEMBURY FOOTPATHS

My wife and I go for a walk most days and especially love to walk the footpaths in the highlighted area of the map shown below - as you will see, this is up by Kent College. At the moment we tend to go to places where we are unlikely to meet anyone, and if we do, we ensure that we are in a position to avoid any contact and keep a safe distance and our facemasks are always to hand. I do wonder though, how many people realise that the village has over 21 miles of public rights of way consisting of footpaths, bridleways and lanes for the benefit of all to use.

I know that the weather of late has been atrocious and many of the paths are now mud baths and not good for walking but please get a Parish footpath map and explore the countryside around us. If you have not got a map please contact the Parish office or ring me on 01892 823068, the maps cost £1.00 each.

To start things off I have featured a section of the map which I hope people will recognise and use and I will feature a different one in the next edition.

Please remember that by the time you read this magazine in several areas there will be sheep with lambs so if you have a dog please keep it on a lead and should there be bullocks in a field please be careful and please make sure that all gates are left shut.

Hopefully this virus will soon ease and our group which tries to keep the footpaths open will be able to meet again and can I respectfully request that people take their litter home with them?

Be careful and stay in good health!

Hugh Boorman



RAINBOWS AND BROWNIES

The arrival of the 2021 didn't bring the public the hope and joy that they were looking for, and it was the same for Guiding.

Face to face meetings are still prohibited and our only method of keeping the girls engaged is through Zoom and home set activities.

As we leaders have discovered, not all girls enjoy taking part on Zoom, but with the reintroduction of remote learning/teaching, comes the extra challenge of every child having to sit in front of a screen for far more time than any of us parents would choose. With Zoom Unit meetings, we are asking parents to put their daughter in front of a screen for even more time, as well as asking those parents to be present while their Rainbow daughters and sometimes their Brownie daughters, take part in the online session. Many of these parents may well have compromised their own work schedule for remote teaching, and the hours post school can be vital to them completing their own job targets. I think leaders are being as mindful of this fact as possible, introducing other ways of engaging with the girls in their Unit – setting activities to be completed at home with evidence being sent to their leaders, as an example.

2nd Pembury Rainbows and Brownies are combining both Zoom and home activities and it's currently working very well for us. We have found ways to adapt Guiding's programme activities so that they can be achieved both online and at home, enabling the girls to work towards their theme awards. It is a lot of extra

work for us volunteers and we are not all able to commit to these extra hours.

Rainbows have made their own sundials, using a torch for our very much missed sunlight, they have dabbled in their own methods of DIY repair jobs, and have even allowed their teddies to travel the world in spite of not being able to join them! They have drawn maps of their walk to school, pointing out dangers and coming up with ways of keeping safe – our very own Safety Superheroes, as well as becoming master puppeteers.



Brownies have been just as busy. We have introduced them to First Aid, including the all-important initial treatments of different burns, as well as discussing the silent illnesses, diabetes and severe allergic reactions. We've asked them to create a campaign to get people 'More Motivated To Move' - the results were fantastic and all so different. We have taught them to sew, to use a screwdriver and hammer sensibly, as well as introducing them to Afghanistan culture – kite fighting as an example, with each girl making their own kite.



Times are different. Times are hard. But there will always be Rainbows and Brownies.

Amanda Baker

3 LADIES

This photo was taken before tighter restrictions came in and shows three ladies celebrating "what we can do" rather than "dwelling on what we aren't allowed to do"! They all live in Pembury and had a lovely socially distanced get together.

Tricia Dyson, Catherine Brown and Christine Lane all enjoying a hot drink in the Recreation Ground!



THE ORIGINS OF SIMNEL CAKE

The origin of the Simnel cake dates back to medieval times where it started life as a yeast leavened bread made with the highest quality flour available. Simnel comes from the Latin 'simila' which translated as the whitest and finest flour.

When we think of Simnel cake, we tend to think of Easter, but the cake was traditionally eaten on Mothering Sunday which fell in the middle of Lent. Not to be confused with Mother's Day, which is a modern-day American import, Mothering Sunday occurs on the fourth Sunday of lent when people visited their mother church or cathedral.



Lent actually lasts for 46 days but Sundays were not considered 'prescribed days' thus allowing some limited indulgence on these days and reducing the fasting to the more well-known 40 days.

By the time we get to the 17th/18th centuries, the bread mixture became sweeter, enriched with dried fruit, spices and nuts and would be boiled like a pudding. It was then wrapped in pastry, glazed and baked until a hard crust formed and looked similar to the Scottish Black Bun, a traditional fruit cake with a pastry base and topping, which is still enjoyed at Christmas and the New Year north of the border.

At the end of the 19th century, it starts to look more like the cake we know today, although the marzipan layer and topping do not appear until the 20th century. At this stage, it became common to insert a layer of marzipan in the centre of the cake before it was cooked and top it with 11 small balls of marzipan once cooked, which supposedly represented the 12 disciples, minus the wretched Judas. There is no one particular recipe for Simnel cake and you can therefore use your favourite fruit cake recipe, whether that is a traditional rich Christmas cake recipe, or a much lighter version. I like to use this one which I inherited from my mother and which has some acknowledgement to the 17th/18th centuries boiled method.

INGREDIENTS

350g mixed dried fruit.
½ tsp bicarbonate of soda.
150g glazed cherries, washed
dried and roughly chopped.
300ml milk.

50g mixed peel (optional)
350g self-raising flour.
50g walnuts roughly chopped.
2 eggs, beaten.
175g dark soft brown sugar.

450g marzipan.
110g butter.
3 tbsp apricot jam.
1 tsp mixed spice.
1 extra egg, beaten.

1. Preheat the oven to 160°C/140° Fan/Gas 3. Place all the ingredients except the flour, bicarbonate and eggs into a saucepan. Bring gently to boil, stirring until the sugar dissolves, and simmer for 5 minutes. Cool slightly.
2. Add the eggs, flour and bicarbonate and mix well.
3. Line a deep 20cm (8in) cake tin with baking/greaseproof paper. Add half the mixture and level.
4. Roll out 1/3rd of the marzipan into a circle which fits neatly into the tin and covers the mixture. Add the remaining cake mixture and level the top.

5. Bake for 40 minutes, then reduce the heat to 150°C/130° Fan/Gas 2 and cook for a further 40-45 minutes. Test with a skewer but try not to pierce the marzipan layer as this may give a false reading.
6. Allow to cool in the tin for 10 minutes, then turn onto a wire rack and remove the paper.
7. Warm the jam and brush onto the top of the cake.
8. Roll out half of the remaining marzipan and place on top of the cake. Crimp the edges with your thumb or use a fork to make indentations. Take the remaining marzipan and roll into 11 small balls, fix them onto the top of the cake using a small amount of beaten egg.
9. Brush the marzipan with the egg and put under a hot grill for about 5 minutes. Do not take your eyes off it during this process as it can quickly burn. Alternatively, use a cook's blow torch.

PEMBURY U3A

With Covid-19 restrictions in place our monthly meeting and interest groups, have had to continue via 'Zoom'. Who would have thought this time last year, 2020, we would have to adapt to the new (to some people) technologies of the internet?

Pembury U3A successfully completed their postponed AGM in early January via Zoom where over 80 people attended. Our normal programme of activities is continuing to be planned for when the restrictions are lifted. Who knows when this will be?!

Pembury U3A always welcomes new members. Please contact Rick Lawrence for more details by emailing membership@pemburyu3a.org.

Michael Cartwright
Chair Pembury U3A

PEMBURY SOCIETY

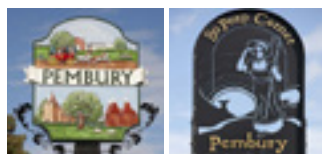
Sadly we are still are not able to commit ourselves to meeting together, with speakers, but the Society's committee continue to be active in the various planning issues that are relevant to Pembury, and keep a watch on issues that might affect the village and its environs.

Our website has lots of information concerning the village, with links to many interesting places and topics. Buildings, historic maps, details of each locality of the village showing where shops and businesses were and the people that once owned them. Then go to the pictures of the past, people and places, and videos to be watched. A section of articles and reference material covers

many topics of interest, particularly helpful for those researching back into time.

So in the meantime, to all members, friends and families, take care, and enjoy the benefits of more walking around the village, seeing things that have usually passed you by, perhaps looking at the historic past from the website, and realising Pembury is such a nice village to be living in with a rich past – something to be cherished!

David Hanes
Chairman



LOCKDOWN PROJECTS

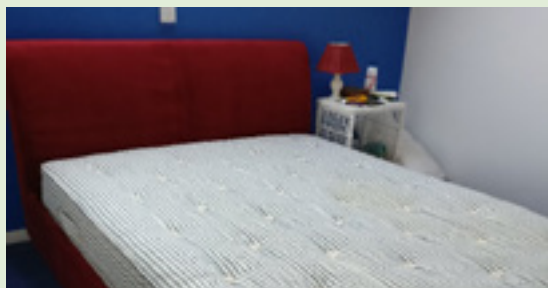
Councillors were asked to share their lockdown projects and these are what was sent in!



Collage by Cllr Maggie Weaver – work in progress!



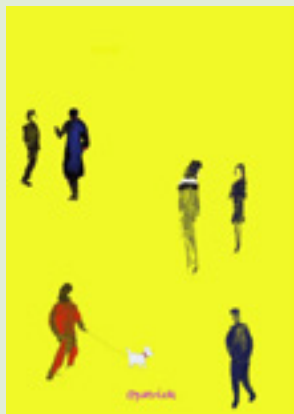
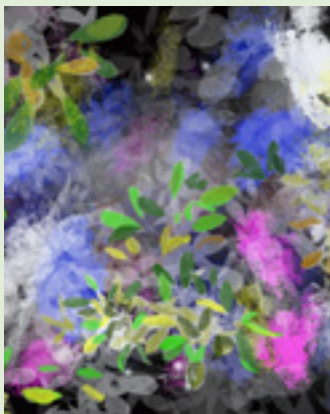
Cllr Susan Sharp. "Well, not nearly as exciting or creative as my fellow councillors but here is a picture of my second lot of lockdown marmalade and gin, the first lot having been made and consumed during the first lockdown. Not something I have ever attempted before."



Cllr Annie Partridge - Christmas jumpers, home-made masks and re-covered the bed frame.

LOCKDOWN PROJECTS (continued)

My art is one 'lockdown project' and I have been painting to inspire. The other is making films for church and YouTube featuring stories of people getting over addiction and trauma. There is also a great deal of humour as you know I like to laugh. Learning to edit, produce, direct and write my own scripts has been a revelation but worth it by Cllr Patrick Gillan



Cllr Nigel Stratton. "The last time I was involved in building model railways was before the age of 15, when my late Father was alive...and as you can imagine he used to do most of it! So things have changed quite a lot in the intervening 50 years.

I wanted to create a winter scene and so have scattered fake snow around. I decided on just a light covering.

The whole thing can be dismantled, including the baseboard, which is in 2 parts, and I have bought two padded covers for that purpose."

Having seen what the Councillors have been doing in their spare time during lockdown, we would love it if you shared what you have been doing. Please send any articles and photos to deputy@pemburyparishcouncil.gov.uk.

BRING ON THE SUMMER AND HOPEFULLY CRICKET !?

As I type we have just had our AGM and it is of course unclear as to what the season of 2021 will bring, but whatever shape or form the summer looks like, we look forward to continuing with the high spirits and goodwill that was generated last year. Congratulations to Chris Wells who has been appointed 1st XI Captain, carrying on a rich family history within the club, all other officers were re-appointed.

Despite the belated start to the season and the many restrictions brought in due to the pandemic, we had an enjoyable season in 2020.

To their credit the Kent County Village League ran an abbreviated version of the league structure in July & August and the Club XI battled valiantly against some strong opposition.

Sundays were a particular highlight under the charismatic tutelage of Grant Peters, there were some very entertaining games, and some good cricket was played with smiles on faces, plus we had an excellent balance of youth and experience in the side which will certainly benefit the former over the coming seasons.

Despite losing what would have been virtually a full season under normal circumstances, we had a brilliant season in the junior section. After getting the green light mid-summer, we then proceeded to have more junior hardball cricket than we have probably ever had running late into the summer. We had double coaching sessions on Friday nights and Saturday mornings, added to that the u13s (Blue Caps) won their

league and the u11s (Steelers) finished runners-up in theirs, winning seven of their eight games. Additionally it is really pleasing to confirm that we are introducing a u15 (Colts) team into the junior leagues as well this coming season.

Sadly due to the restrictions we were unable to run the All Stars programme last summer (softball cricket for ages 5 – 8) but we will endeavour to get this back on in 2021, assuming we gain permission.

We were certainly very humbled with the level of sponsorships that we received in 2020 from local business and supporters, particularly generous in these uncertain times. We are of course very keen to forge further links to help us continue to evolve and indeed fulfil our ambitious plans for the Cricket Club, details of the various sponsorship packages we offer can be found via our website.

Roll on the summer!

Richard Dawes (Club Captain – Pembury CC) – <http://pembury.play-cricket.com>



Like us on Facebook - facebook.com/PemburyCricketClub



Follow us on Twitter - twitter.com/pemburycc



Follow us on Instagram - instagram.com/pemburycricketclub



HOSPICE IN THE WEALD - Reducing Pressure on the NHS – Right Now!

Hospice in the Weald has been working to reduce pressure on the local NHS as the COVID pandemic continues to cause high levels of hospital admissions in the local area.

The Hospice has made a number of beds on their In-Patient Ward in Pembury and Cottage Hospice in Five Ashes available for those who need care at the end of life. This might be patients with COVID in hospital or those at home.

Paul Madden, Care Director, said: "As the local hospital is admitting more than three or even four times the number of daily COVID cases than the previous peak and people are dying in

ambulances waiting for hospital admission across the country, we want people to know that you don't have to die alone in hospital, home, or worse. Care from Hospice in the Weald means you can still have visitors - we can offer beds directly to the families of those at the end of their lives, with or without COVID-19."

If you or someone you know needs Hospice care, the Hospice is here. Get in touch right now, via telephone or our website. Call 01892 820515 or visit hospiceintheweald.org.uk

Written on 8 February 2021

PEMBURY RECREATION GROUND

A year or two back, the Parish Council asked residents if the old climbing frame should be kept or got rid of. The response was an overwhelming 'keep'! It reminded a lot of people of their childhoods – people who are now bringing their own children to the rec and no-one wanted to see it go. We have now had a new safety surface put underneath and once the climbing frame has been painted, which is planned for this year, the area will look so much smarter. Repair work has also been done to the safety surfacing in the well-used Kindergarden area.



CRIME REPORT

Unfortunately, whilst I do not like to be looking on the dark side it is very difficult to be full of joy at the moment. We have to listen to the professional advice given to us, not always easy to determine to whom we should listen, but it does remind me of the music titled 'Variation on a Theme'.

Let us hope that the punishment issued out to all those who blatantly break the law is raised to such a level that it is something they will live to regret and that they are named and shamed.

We have to hope and pray that this virus will start to recede and that those still in hospital will recover and return to their families and that those still awaiting previously arranged operations can proceed.

We must always be grateful for the endless, tremendous and selfless effort put in by the NHS staff of all levels to fight this evil and we must not forget those who have lost loved ones.

Returning to the crime figures, it is a little disappointing that they have risen on the previous quarter by seven offences. Thankfully, violent crime showed an encouraging drop from 51 down to 26 but other offences rose from 11 to 32 and criminal damage up from 6 to 17, and these include vehicle windows being broken under cover of darkness. With the lighter evenings coming in let us hope we can drive these lowlife out. Of course, it is perfectly possible that some of these offences are committed by people from outside the village.

We have been requested by the Kent Police who provide the crime figures every quarter to publish a warning regarding Coronavirus Vaccine scams. Please read and if there is anyone that you know, relative, neighbour or friend who might be vulnerable to these crooks please, please make sure that they read this warning and understand the possible outcome if they fall for it.

Please let us all hope that things can and will improve before long and that we can improve the situation for all families and their children who are missing school.

Please be careful.

Hugh Boorman.

Crime type by reported month (PEMBURY WARD)	Violent Crime	Burglary Residential	Theft of a motor vehicle	Theft from a motor vehicle	Theft Offences (exc vehicle offences)	Criminal Damage	Other Offences	Total
Oct-20	9	1	1	1	5	2	8	27
Nov-20	8	1	1	0	8	10	10	38
Dec-20	9	1	0	2	5	5	14	36
Oct to Dec 2020 total	26	3	2	3	18	17	32	101

Total recorded crime						
Pembury	Capel	Goudhurst and Lamberhurst	Branchley and Horsmonden	Sherwood	Park	
Oct-20	27	10	13	8	73	78
Nov-20	38	11	8	13	85	55
Dec-20	36	3	7	24	69	53
Oct to Dec 2020 total	101	24	28	45	227	186

VILLAGE ORGANISATIONS

AGE CONCERN	Mrs Sandra Springett. Tel: 522591
AMBERSIDE DANCE STUDIO	Principal: Sadie Van Der Spuy. Tel: 07734 053509. www.360dance.co.uk
ASPENS (FORMERLY PEPENBURY)	CEO – Robert Shanahan. Tel: 01892 822168
CATHOLIC CHURCH	Fr. Ed Tomlinson. Tel: 825009
CONSERVATIVE PARTY	Sue Nuttall. Tel: 01892 822776. Email: sue_nuttall@tiscali.co.uk
FRIENDS OF PEMBURY PARISH CHURCH	Chairman: Mrs S. Clarke, Little Stanton, Romford Road. Tel: 823932
GUIDES, BROWNIES AND RAINBOWS	Caroline Cooper. Email: pemburydistrict@btinternet.com
HOSPICE IN THE WEALD	Maidstone Road. Tel: 820500
KENT COLLEGE	Headmistress: Ms J. Lodrick. Tel: 822006
KENT COLLEGE PREP SCHOOL & NURSERY	Headteacher: Mr N Pears. Tel: 820204
LIBERAL DEMOCRATIC PARTY	David Mills. Tel: 825577
LITTLE RASCALS	c/o PBC Office. Tel: 825590
MULTIPLE SCLEROSIS SOCIETY	TW District. Tel: 0845 6037882
NATIONAL FEDERATION OF THE BLIND, UK	Michael Coggles. Tel: 822705
NEIGHBOURHOOD WATCH	Janet Ditchett. Tel: 822586
OUT AND ABOUT CLUB	Sue Giles. Tel: 823318
PEMBURY ATHLETIC (YOUTH) FOOTBALL CLUB	Alban Poulson. Tel: 822919 / 07748680071
PEMBURY BAPTIST CHURCH	Church Office. Tel: 825590
PEMBURY BOWLS CLUB	Phil Griffin Tel: 823129
PEMBURY BRIDGE CLUB	Geoff Plummer. Tel: 824652
PEMBURY CHILDMINDER'S CO-ORDINATOR	Sam Knight 07793066471 mrssam.knight@btinternet.com
PEMBURY CRICKET CLUB	Secretary/Treasurer: Andy Weaver, 51 Heskett Park Tel: 824362
PEMBURY DAY CENTRE	c/o PBC Office. Tel: 825590
PEMBURY FOOTBALL CLUB	Saturday Secretary: Michael Brown 327480 Sunday Secretary: Phil Craxton 823928 Chairman: Andrew Rice-Tucker 823195
PEMBURY GARDENERS' SOCIETY	Ann Purton. Tel: 824223
PEMBURY WALKING CLUB	Martin Bolt. Tel: 07769707061
PEMBURY PAVILION BOOKINGS	Gillian Mayrick. Tel: 824852
PEMBURY PLAYERS	Maggie Weaver, Chair of Pembury Players. Tel: 824362
PEMBURY SCHOOL	School Office. Tel: 822259
PEMBURY SCHOOL ASSOCIATION	Chair: Theresa Mason. email: psa@pembury.kent.sch.uk
PEMBURY SCHOOL HOUSE NURSERY	Teacher in charge: Rachel Teigen. Tel: 825580
PEMBURY SHORT MAT BOWLING CLUB	Arthur Storey. Tel: 822509
PEMBURY SOCIETY	Chairman: David Hanes. Tel: 823174
PEMBURY U3A	Rick Lawrence. email: membership@pemburyu3a.org
PEMBURY UPPER AND OLD CHURCH	Vicar: Rev. Richard Worssam / Church Administrator – 711126
PEMBURY VILLAGE MARKET	Jean Tyler. Tel: 01732 357820/Suzanne Leviton. Tel: 07927713256
POLICE COMMUNITY SUPPORT OFFICER	PCSO Nick Brown. Tel: 07772 226001 Email: nicholas.brown@kent.pnn.police.uk
ROTARY CLUB OF SOUTHBOROUGH & PEMBURY	Secretary: Nigel Stratton. Tel: 822936
ROYAL NATIONAL LIFEBOAT INSTITUTION	Peter Chartres. Tel: 823759
SCOUTS, CUBS AND BEAVERS	Richard Alfieri. Email: sturgeonclubspembury@gmail.com
ST. ANSELM'S CATHOLIC CHURCH	01892 825009
ST. ANSELM HALL ENQUIRIES	Janet Ditchett. Tel: 822586.
ST. PETER'S MOTHERS' UNION	Secretary: Tina Walters. Tel: 822545 (after 4pm)
TABLE TENNIS CLUB	John Burleton. Tel: 823250
THE ALLIANCE	3 Stanam Road, TN2 4LD
THE ORDINariate OF OUR LADY OF WALSINGHAM	Fr. Ed Tomlinson, 31 Henwoods Crescent. Tel: 825009
TOWN & COUNTRY (High Weald Housing)	Housing manager: Stephen Aspinall. Tel: 0845 8731 321
TREE WARDEN	Hugh Boorman. Tel: 823068
TUNBRIDGE WELLS ACCESS GROUP	Gill Pavely. Tel: 822605
TUNBRIDGE WELLS & DISTRICT VICTIM SUPPORT SCHEME.	Tel: 513969
VILLAGE HALL	Manager (bookings): Tel: 07983 228181
WOMEN'S INSTITUTE	Evening: Mrs Gillian Williamson. Tel: 01892 822 577 Email: pewisecretary@gmail.com Web: pemburyeveningwi.wordpress.com

YOUR COUNCILLORS



Cllr Katy Brooks
Chair of Pembury Parish Council,
Vice Chair of Communications & Events Committee
Chair of Finance & HR Committee
Member of Planning & Highways Committee
katy.brooks@pemburyparishcouncil.gov.uk



Cllr Annie Partridge
Vice Chair of Pembury Parish Council
Vice Chair of Planning & Highways Committee
Member of Finance & HR Committee
Member of Communications and Events Committee
annie.partridge@pemburyparishcouncil.gov.uk



Cllr Heather Eastoe-Kirby
Member of Open Spaces Committee
Member of Communications and Events Committee
heather.eastoe Kirby@pemburyparishcouncil.gov.uk
07801 274778



Cllr Joe Pearce
Member of Planning & Highways Committee
joe.pearce@pemburyparishcouncil.gov.uk



Cllr Alan Gaukroger
Chair of Planning & Highways Committee
Member of Open Spaces Committee
alan.gaukroger@pemburyparishcouncil.gov.uk



Cllr Susan Sharp
Chair of Open Spaces Committee
01892 823040
susan.sharp@pemburyparishcouncil.gov.uk



Cllr Patrick Gillan
Vice Chair of Open Spaces Committee
Member of Planning & Highways Committee
1 Knight's Close
01892 825324 07747 002766
patrick.gillan@pemburyparishcouncil.gov.uk



Cllr Christine Snow
Member of Open Spaces Committee
1 Cornford Park
christine.snow@pemburyparishcouncil.gov.uk
01892 825428



Cllr Graham Hall
Member of Planning & Highways Committee
Ashcroft, 38 Lower Green Road
01892 822689
graham.hall@pemburyparishcouncil.gov.uk



Cllr Nigel Stratton MBE
Member of Open Spaces Committee
Vice-Chair of Finance & HR Committee
01892 822936
nigel.stratton@pemburyparishcouncil.gov.uk



Cllr Louise Mills
Chair of Communications & Events Committee
louise.mills@pemburyparishcouncil.gov.uk



Cllr Maggie Weaver
Member of Open Spaces Committee
Member of Communications & Events Committee
01892 824362
07725009904
maggie.weaver@pemburyparishcouncil.gov.uk

Clerk to Pembury Parish Council

Helen Munro
c/o Parish Council Offices, Lower Green Recreation Ground
Lower Green Road
Pembury, TN2 4DZ Tel: 823193
Email: clerk@pemburyparishcouncil.gov.uk

Deputy Clerk to Pembury Parish Council

c/o Parish Council Offices, Lower Green Recreation Ground
Lower Green Road
Pembury, TN2 4DZ Tel: 823193
Email: deputy@pemburyparishcouncil.gov.uk

BOROUGH COUNCIL

Cllr Paul Barrington-King, 57 Henwood Green Road, TN2 4LH Tel: 07899 731696
Cllr David Reilly, 8 Forest Way, TN2 4EP Tel: 01892 458216
Cllr David Hayward, 3 Stanam Road, TN2 4LD Tel: 01892 808000

COUNTY COUNCIL

Cllr Paul Barrington-King, 57 Henwood Green Road, TN2 4LH Tel: 07899 731696



AJ SERVICES

ROOFING & PAINTING

**New Roofs • Flat Roofs • Rubberised Sealant
Roof Repairs • Ridge Tiles • Chimneys Rebuilt
Repointing • Fascias & Soffits • Guttering
Downpipes • Dry Verge Systems
Interior & Exterior Painting**



Home: 01892 231 777
Mobile: 07884 298 951

www.ajservicesuk.co.uk | ajservices3@outlook.com