

PEMBURY VILLAGE NEWS

ISSUE 155
Autumn 2013



CONTENTS

Chair's Report	3	Village Quiz Night	26
Pippins Farm - Apple Day	5	Gardeners' Summer Show	27
Dr Andrew Cameron	7	Jeff Stewart	27
Public Access Defibrillator	9	In The Beginning	28
Fergus Anckorn Talk	11	Scout Group - Joseph Boddy	29
RNLI Autumn Fayre	11	Footpath Walkers	29
Picnic on the Green	13	Recipes	30
Retirement of Rev'd. Heather Hughes	15	Kent Police	31
The Recreation Ground	17	Pembury History	32
Ken Watts Memorial Seat	19	Crime Report	32
My Plot	19	Crime Figures	33
Pembury Athletic Under 12s	20	For Your Diary	34
Pembury Athletic Under 12s <i>Continued</i>	21	KCC Highways	35
Human Nature vrs No Nature	22	KCC Highways <i>Continued</i>	36
Walking Backwards - Brownies	23	Citizens Advice Bureau	36
Pembury Bowls Club	23	Citizens Advice Bureau	37
Family Harvest Supper	25	Knotweed	37
Evergreen or Holm Oak	25	Your Representatives	38
End of Term	26	Village Organisations	39

Front cover Photo taken by Sarah Pomfrett

Edited, typeset and printed by
Printwells (Tunbridge Wells) Limited.
www.printwells.com

Please note: the Editorial team's decision is final on whether or not to publish any item submitted. The team reserve the right to edit (that is to cut, précis, alter, correct grammar and spelling) any item published.

PEMBURY VILLAGE NEWS

c/o Parish Council Offices, Lower Green Recreation Ground,

Lower Green Road, Pembury, TN2 4DZ

Distribution enquiries: Parish Clerk 823193

Email: deputy@pemburypc.kentparishes.go.uk

www.pemburypc.kentparishes.gov.uk

Pembury Village News is published four times a year by the Parish Council, but the views expressed in the magazine do not necessarily represent official council opinion or policy.

CHAIR'S REPORT AUTUMN 2013

Summer has arrived and with it the glorious sunshine, I have never seen the Village looking so lovely. Everyone really has made such an effort with their floral displays, gardens and containers and our own hanging baskets through the High Street look so vibrant.

Judging has been carried out for the Pride in Pembury and also the Scarecrow Competition. Well done to everyone who went that extra mile to enhance the Village and Village life.

Picnic on the Green was really well attended and this year was a showcase for local talent. Their time was given freely, with enthusiasm and it's great to see youngsters at the start of their climb to the top of show business. I offer my sincere thanks to music promoter Danny Littlechild for organising all of the afternoon/evening's entertainment and coping with a howling wind which proved to be a major feat. Where the Picnic is concerned, if we don't try new acts and directions, it would become stale so your feedback on this is very welcome. Do you want it every year or perhaps every other year; please write and let me know.

We have had a good summer so far, but we have a major battle looming with the fight for our Greenbelt land, and the Penn's Yard Appeal, waiting for the Inspectorate decision. The villagers of Pembury are most definitely not 'nimby's'; we welcome small developments on Brownfield sites and new residents, but our green fringe around the Village is so necessary to keep our identity.

Like all villages who think they are special, we know we are!! We have so much to be proud of; a fantastic school, a G.P Surgery which does its utmost to give us appointments and care as needed, shops that are thriving, first rate Public Houses which are so welcoming and recreational facilities that are well used and the envy of other areas. This is our Village – and we need to protect it.

We are so lucky to have so many willing volunteers living here; our Environment group who every week sort out some of the overgrown footpaths, clear them, and protect our Environment, also those of you who deliver the P.V.N. and the ladies from the W.I who maintain the horse trough on the Green, and Mr and Mrs Snow who plant up the War Memorial planters, thank you all.

I felt very privileged to attend the retirement service for St. Peter's Curate Rev'd. Heather Hughes. The whole morning was such a joy and celebration of this special lady who I know has brought so much comfort and pleasure to everyone she met during her time as Curate, thank you Heather.

I sincerely hope you have all had a lovely summer.

Cllr Mrs June Crowhurst



Copy for Next Issue - Please note change of email address

Any news items or articles for possible inclusion in the next issue of this magazine must be forwarded to the Parish Office, c/o Parish Council Offices, Lower Green Recreation Ground, Lower Green Road, Pembury, TN2 4DZ

1st November 2013

If you use a computer to type your article, it would be extremely helpful if you could send it (and photos attached separately) in by email to deputy@pemburypc.kentparishes.gov.uk

Broadfeed^{LTD}

Feeding All Creatures Great And Small



**Animal & pet feeds, saddlery, clothing,
accessories, bedding and much more.**

• Free & Easy Parking • Helpful Staff • Friendly Advice • Delivery Service

**6-7 Spa Industrial Park, Longfield Road,
Tunbridge Wells, Kent. (Opposite Kwik Fit).**

Tel: 01892 532619

www.broadfeed.co.uk

Open 8.00 – 5.30 Monday to Friday, 8.30 – 4.00 Saturdays

P.D.C **WATER** **SERVICES**

External Plumbing/Groundwork

All work carried out to a high standard

W.I.A.P.S Registered

Emergency Call-Outs

Paul – Mobile **07788420889**



Peek **Landscaping**

Driveways, paths, patios, drainage, Fencing/gates, walling, turfing, garden clearance, general maintenance.
All work carried out to the highest standard, customer references available on request. Fully Insured.

For free advice and quotations, contact Brooke Peek on:

M: 07900 945521, E: brooke_peek@hotmail.co.uk

25 Judd Rd, Tonbridge, TN9 2NH



Pippins Farm Apple Day

Sunday October 13th 2013
11am – 5pm



- Apple Pressing Demonstrations •
- Free litre of fresh juice per adult (own container) •
- Juice and Cider Tastings •
- Apple Tastings and Displays – approx 50 varieties •
- Orchard Tours •
- Pick Your Own & Farm Shop •
- Apple Games •
- “Apple Art” Display •
- Hog Roast & Homemade Refreshments •

ENTRY: Adults £3 (proceeds to Hospice in the Weald)

From A21 – take A228 for Paddock Wood. Follow signs for Pembury and Hospice in the Weald.

Pippins Farm, Maidstone Road, Pembury, Kent, TN2 4AD
(www.pippinsfarm.co.uk Tel: 01892 824544)

Reg Charity No. 280276

PEMBURY DENTAL SURGERY



Nelis du Plessis B.Ch.D. (Pret)

67 Hastings Road, Pembury, Tunbridge Wells, Kent TN2 4JS

Tel: (01892) 823044

Committed to Quality Dentistry



New Hay Farm, Old Hay
Paddock Wood, Kent TN12 7DG
T: 01892 83 4306



West Kent Shooting School



- ◆ Practice Facilities in English Sporting and English Skeet
- ◆ New for 2013 our 100ft High Tower
- ◆ Lessons and Gun Fitting available by appointment
- ◆ Ideal setting for Corporate Entertainment
- ◆ Open Monday to Friday 10am - 5pm

www.wkss.demon.co.uk

Wills

• Powers of Attorney •

Probate

Help and advice at reasonable costs

Home visits

All fees agreed before you proceed

For a free initial consultation with Peter Camrass DipPFS Aff.SWW

Tel: 01622 720985

peter@camrasswills.co.uk

Mobile: 07747 007971

www.camrasswills.co.uk

DR ANDREW CAMERON

"What's the worst thing that's going to happen to me?" The voice trembled and I think was really asking "am I going to die?" I am certain they considered death to be the worst of all possible outcomes. It made me wonder whether my dying is indeed the worst thing I can imagine. As much as death worries me, I realised my greatest fear would be to live without hope. Hope is that confident expectation in the future being all right.

'Hope springs eternal from the breast of man' is that very well-known line from that not-so-well known poem 'Essay on Man' by the eighteenth century English poet Alexander Pope. He was writing about how chaotic and confusing our lives appeared to be and through our limited understanding of the universe, man had to rely on hope. Some great thinkers have tried from time to time to describe alternatives to the message of hope. In my work and studies, I have reflected upon the human condition as related by the three of the ancient Greek philosophies. Firstly the stoics believed that we were all governed by the universal law; a law that applied to everyone without exception. Death was simply a natural part of that universal law. The philosophy encouraged people to just accept their destiny; nothing happens by accident so everything happens through the necessity of the natural law. Don't complain, put up with it, and be stoical.

The cynics on the other hand can be summed up by Socrates, who when looking at a stall in the market place remarked, "What a lot of things I don't need". Cynics do not believe that happiness is found in material possessions or even good health. Diogenes, the famous cynic, lived in a barrel and owned a cloak, a stick and a bag. He had everything that he wanted. He did not concern himself with his own health; even his own death did not disturb him. Similarly other people's woes did not cause him any apparent distress. That's cynics for you!



Thirdly, we have the Epicureans, inspired by Epicurus. They believed that in life the best thing was pleasure and the worst was pain. Greek culture at the time feared the wrath of the gods and feared the gods' judgement. Epicurus had a quick and attractive answer; don't worry about death because as long as we are alive we are not dead and when we are dead, we no longer exist. He believed that no one he knew had ever complained about being dead. So since there was no judgement; be happy, be good and then die.

All these ideas had many followers and probably people today still hold with these beliefs. But all fall short in satisfying the needs of the human heart. When my daughter, Hannah, died 27 years ago, my wife Sue and I found no comfort or solace in being stoical. Hannah's death did not make us become cynical about life and dismissive of the pain that death brings. We did not think of her life as just one life to be enjoyed and to then cease to be. At that time of despair and heartache many platitudes were spoken to us, "Everything happens for a reason", "It is what it is", "This, too, shall pass". These trite comments had no real substance and as hurting people we did not wish to hear them.

What I did find was that hope springs eternal. I discovered a confidence through my pain that meant I knew everything would be all right. Not that God was going to miraculously bring Hannah back to life, not that I did not hurt more than I had ever imagined. None of these; I simply found hope. Hope binds us to the future and frees us from the present; a present where so much rubbish is heaped upon us. As the writer of Proverbs said 'a hope deferred makes the heart sick', because hope is indeed the anchor in our lives and we should be joyful in hope. So to all you cynics, stoics and epicureans out there, whatever hurts and upsets may befall you, I hope everything will be all right; and it will be. Trust me, I'm a doctor.

Dr. Andrew Cameron

Burtons

Pembury's Solicitors

* Prompt Efficient Friendly Service

The Tyled House
23a High Street
Pembury, Kent TN2 4PH

Tel: (01892) 824577

G. F. GROVES Ltd

CARPENTERS, JOINERS & BUILDING CONTRACTORS

EST. 1979

ALL ASPECTS OF GENERAL BUILDING

EXTENSIONS

LOFT CONVERSIONS

RENOVATIONS

Tel: 01892 724424

Mob: 07774 742747

PUBLIC ACCESS DEFIBRILLATOR

The Parish Council are pleased to announce that they have successfully secured funding for a Public Access Defibrillator (PAD), to be sited at Pembury Pharmacy in the High Street. A PAD site is a location where an Automatic External Defibrillator (AED) is stored and made available to members of the public, for use in an emergency situation. Many of you will have seen an AED before, hanging on the walls of mainline stations, major airports and shopping centres. South East Coast Ambulance Service NHS Foundation Trust is currently working with its partners in the community to increase the numbers of these devices in rural locations and areas of high footfall. This work also links well with the current advertising campaign encouraging members of the public to use “hands only CPR” in cases of cardiac arrest.



An AED is a lightweight, portable device that delivers an electric shock through the chest to the heart. The shock can stop an irregular rhythm and allow a normal rhythm to resume in a heart in Sudden Onset Cardiac Arrest (SOCA), where defibrillation in the first few minutes can increase the chance of survival from 7-10% up to 75%. Untreated SOCA will lead to death within minutes if not treated.

Initially the AED will be stored inside the Pharmacy and will be available during opening hours, as shown below. Later this year, the AED will be mounted in a cabinet on the outside of the building to ensure that it is available at any time. The cabinet will be locked and can only be opened by use of a pin code. If you dial 999 in an emergency situation, you may be asked by a member of the Ambulance service staff to go to the Pharmacy and collect the AED. In this case you will be given the pin code. The AED only weighs 6.6 lbs. (3.1 kg) and is easily carried. It can automatically analyse the patient and decide if a shock is required or not. The operator just needs to follow simple commands from the AED and push the shock button if told to. In addition to this, the Emergency Medical Advisors who answer 999 calls for the Ambulance service will be able to give instructions to a user if required.

We hope that there will not be a call for this to be used but think you will see the benefit it can provide to our community.



Pharmacy Opening Hours:

Monday:	9am - 6.30pm
Tuesday:	9am - 6.30pm
Wednesday:	9am - 5pm
Thursday:	9am - 6.30pm
Friday:	9am - 6.30pm
Saturday:	9am - 5pm
Sunday:	Closed



Caroline Milwidsky

**The Reliable and Professional Service with the
Personal Touch**

**Accounting Bookkeeping Payroll and PAYE National Insurance Self Assessment
RTI Compliance Management Accounts Corporation Tax Budgets and cash flows VAT**

???? How much time do you spend on your accounts rather than running your business ????

Not only can we prepare your annual accounts and deal with the tax, but we can also help on a day by day,
week by week, monthly or quarterly basis.

Our clients include Self Employed Sole Traders and Limited Companies across a wide
and varied range of businesses.

Contact: Caroline Milwidsky Tel: 01892 891220 - Mob: 07885 249968

Email: c.milwidsky@btconnect.com



PEMBURY PAVILION

AVAILABLE FOR HIRE

A 1000sq ft club-room area with fully-fitted kitchen adjacent.

Suitable for all occasions: Meetings, Seminars, Training Groups, Children's Birthday Parties, Anniversaries, Funeral Wakes – just a few of the many functions that can be accommodated at the Pavilion throughout the year.

For further information contact:

GILLIAN MAYRICK on 824852 or gillianmayrick@aol.com

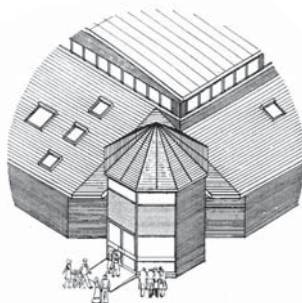
PEMBURY VILLAGE HALL

AVAILABLE FOR HIRE

**Facilities include Main Hall, Meeting Room, Stage,
Kitchen, Changing Rooms and Services.**

**Ideal for Club Meetings, Weddings, Anniversaries,
Corporate Functions, Shows, Dances, Musical Events, etc.**

**CONTACT BOOKINGS MANAGER –
RACHEL WINDUS ON 822837**



THURSDAY 7TH NOVEMBER 2013

AT 7.30 IN THE UPPER CHURCH, PEMBURY

ADMISSION £4 ON THE DOOR.

Free tea/coffee afterwards

Fergus Anckorn Talk



In 1937, Fergus Anckorn, at 18, became the youngest ever member of the Magic Circle. When war came in 1939, he gave service not only as a gunner in the Royal Artillery but also as a conjuror entertaining fellow troops.



After being captured in the Far East he was ultimately to use his skills to distract the Japanese guards from their brutal slave driving in prisoner of war camps and on the building of the infamous Burma-Siam railway line. His conjuring both saved his life and very nearly lost him his life. A true survivor, he is today the oldest member of the Magic Circle.

We are delighted that Fergus will be with us to talk about his wartime experiences and allow us this unique opportunity to hear the very moving details of his life as a Japanese Prisoner of War.

Further information: Pauline 01892 824327

RNLI AUTUMN FAYRE : SATURDAY 26 OCTOBER 2013

Year by year, an average of 8,000 people are rescued by the RNLI's lifeboats, operating from 230 LB stations, along with RNLI Lifeguards on our beaches, saving lives day-in, day-out 24/7. Most crews are unpaid volunteers, risking their lives to save others.



The whole organisation is funded without UK Government support of any kind - relying upon charitable donations, local fundraising and legacies to (literally) keep it afloat.

Just about anybody who visits the seaside, goes swimming, or ventures out to sea on a ferry, fishing boat, pleasure cruise, etc., could - sooner or later - need the help of the Lifeboat Service.

Pembury Branch RNLI recognises this need and has been raising money locally for nearly 50 years. A regular annual fundraising event is their Autumn Fayre - which this year will be held at the Catholic Hall (Lower Green Road) on Saturday 26 October. The

Mayor of Tunbridge Wells has been invited to open proceedings at

10am and the Fayre will run until 12 noon. Admission will be charged at a very modest 50p (children 20p), to include refreshments.

This will be a wonderful opportunity to start Christmas shopping, away from the hustle and bustle of the town centre. Good quality gifts, suitable for all ages, will be on sale at very competitive prices - as well as a wide range of attractive Christmas cards.

But, apart from presents to buy, the RNLI Fayre always has high value prizes in its grand raffle and various other games offer the chance to add to takeaway winnings. The home-made cake stall is ever popular and interesting items can be found amongst the bric-a-brac.

If you feel you would like to help with this event (e.g., cake baking, providing bric-a-brac or raffle prizes, etc.), please contact

Peter Chartres : 01892 823759.



PHIL'S KITCHEN INSTALLATIONS

01892 523192 / 07773723646

Based in Tunbridge Wells • You supply - we fit

- High quality all-in or partial fitting
- No job too small
- Worktop, sink, hob replacement-only service
- References available
- Integrated and freestanding appliance fitting
- Reasonable rates and free quotations
- Tiling/Electrics/Plumbing/Gas undertaken

David Salter

Gas & Plumbing Services

Central Heating Installations & Upgrades

Boiler & Cylinder Changes

Breakdowns, Connections & Servicing of all gas appliances

15 Years experience with British Gas

Corgi Registered

EMERGENCY CALL OUTS - MOBILE 07733 107333



Pembury, Kent

personal touch computers

www.pt-c.co.uk

networking



Home and business IT

Up front costs, no unexpected hourly fees

security



Laptops/custom PCs

Wireless / ADSL / CABLE installs, helpful advice

reinstallation



Callouts available

Business hours / evenings and weekends

upgrades

Aaron Taylor 07545 996 410

email – aaron@pt-c.co.uk

PC/server builds

repairs

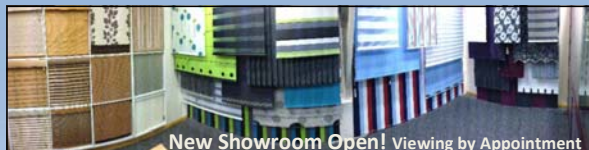
PICNIC ON THE GREEN

"It isn't raining, it actually is not raining," was the cry that went up on Saturday afternoon - 15th June when the Parish Council was setting up for the event. However the wind was so strong it was not letting people open their chairs unless they sat on them! The gazebo that was set up for the musical acts had to be tethered to a car each side to keep it on the ground! But the people came and the musicians arrived, everyone had a

great time. There was music to suit all tastes; many thanks must go to Danny Littlechild from AVP who brought the acts together, all of whom gave their time and performed for nothing. A bucket collection was taken which will be split between the Parish Council chosen charity – St. John Ambulance who supports all our events, and village projects. We hope everyone will be back in November for the next event, the annual firework display – 8 November.

Janet Ditchett





THE BEST KEPT SECRET IN PEMBURY!

Penumbra Blinds have been Manufacturing & Supplying Internal Window Blinds & Curtains, External Awnings and Canopies to residential and commercial customers from our facilities on Romford Road since 1991!

Your truly local company for any of the following:-

- ◆ All types of Internal Blinds including the new Vision™ roller blind system
- ◆ External Blinds, Awnings, Canopies & Gazebos
- ◆ Solar Control & Security Window Films
- ◆ Friendly Service
- ◆ Expert Advice
- ◆ No Pressure Sales!

Visit us at the far end of Romford Road and find out why we've been here so long!



Tel: 01892 825522 E-mail: info@penumbrablinds.com

www.penumbrablinds.com



Unit 2 Albans Farm, Romford Road, Pembury, Tunbridge Wells TN2 4BB



YOUR LOCAL, INDEPENDENT ESTATE AGENT WITH WORLDWIDE 24 HOUR COVERAGE

VOTED 'BEST WEST KENT ESTATE AGENT' BY THE PUBLIC

Please call in to discuss all your property requirements in a relaxed, friendly environment where we will be pleased to assist you.

www.bkestateagents.com



Please scan with your smart phone for full details of all our properties

16 High Street Pembury Tunbridge Wells Kent TN2 4NY:

Telephone- 01892 822880

Email: pembury@bkea.co.uk

Other offices at:

Tonbridge
141 High Street
Tonbridge TN9 1DH
01732 771616



Lettings
141 High Street
Tonbridge TN9 1DH
01732 771616

RETIREMENT OF REV'D. HEATHER HUGHES

A Service to celebrate the ministry of Rev'd. Heather Hughes and to mark her retirement as Curate of St. Peter's Pembury was held in the Upper Church on Sunday 14th July.

The service was attended by the Chair and members of Pembury Parish Council, reflecting the valued work Heather has done for the village community. A packed church applauded her inspirational sermon.

After the service the congregation enjoyed a magnificent buffet lunch.



The Vicar of St. Peter's, Rev'd. Douglas Robertson, commented, "The service was a great opportunity to celebrate Heather's ministry over many years, both in St. Peter's and in our village community. It was lovely that we were joined by two former Vicars of St. Peter's – Rev'd. Jim Brasier and Rev'd. Stephen Sealy."

Back Row (l-r) Rev'd. Jim Brasier, Rev'd. Stephen Sealy and Rev'd. Martin Sully

Front Row (l-r) Rev'd. Douglas Robertson, Rev'd. Heather Hughes, Jill Marchant and Rev'd. Mandy Carr







 Dog sitting from £15/day

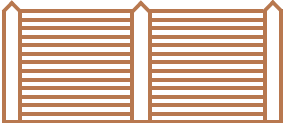
 Stay overs from £15/night

 Dog grooming from £30/dog*
*puppies from £10

Tish Garland - 07749650222

 www.showpawsdogwalkingandsitting.co.uk 

Steffan Keily



FOR ALL YOUR FENCING REQUIREMENTS

All types of fencing supplied and fitted
Close board, panels, palisade, post & rail, gates

FREE ESTIMATES

FULLY INSURED

HOME: (PEMBURY) 01892 520150 MOBILE: 07941 138060

Dawn Hodgson MSSCh MBChA Chiropodist

HPC Registered - Home Visits

- Police checked
- Professional Advice and Friendly Care
- Diabetic Assessment and Maintenance
- Verruca Treatment
- Ingrowing Toenail Care



**7 Greenleas, Pembury,
Kent TN2 4NS**
Mobile: 07761 583756
Tel: 01892 824916

- Treatment for Fungal Infections
- Day and Evening Appointments available
- Discounts for Over 70's
- Simply Health 50% Refund Available

COMPUTER REPAIRS

HOME PC'S • LAPTOPS • SERVERS
INSTALLATIONS • MAINTENANCE • BUSINESS NETWORKS

Free estimates provided within 24 hours.
Recently moved to new workshops in PEMBURY.
Ring or call in to discuss your requirements.



- MG Computer Services -

"A reputable company established in 1982 with experienced staff"

145B Hastings Road - Pembury - 01892 826130

THE RECREATION GROUND, LOWER GREEN ROAD

The following was largely extracted from the minutes of the parish council meetings which are deposited in the Kent Archives at Maidstone.

The idea for a recreation ground in Pembury was first suggested in summer 1931. Initially the parish council considered the 'unused part of The Grove housing site for playing fields' but then settled on 'High Gee Field' which was to be retained as an open space or recreation ground. The owners were Messrs Romary & Co (biscuit manufacturers) of Tunbridge Wells. It seems that the frontage on Lower Green Road was already earmarked for housing as Mr Romary wanted to sell off that bit and give the council the option of buying the rest subject to a covenant 'for use for public recreation only'.

The following spring KCC gave PPC permission to raise £450 to purchase the 7 acre field. The parish office still has the conveyance and it is apparent that, by then, Mr Romary had sold the whole field to Arthur Herbert Price of Shirley Dene, Hastings Road, builder, who had raised a mortgage of £900 from George Blackstock of Altnabraec, High Street in order to do this. Mr Price was required to fence off the building plot and the rest was transferred to the PPC on 22 July 1932 when the £400 purchase money was paid directly to Mr Blackstock in part repayment of Mr Price's loan.

After the cost of purchase and some fencing very little of the £450 was left so the council sought grants to finance work on levelling the site and so they could decide what was to be provided. By January 1933 they had received £105 from the Carnegie Trust and £35 from Kent Playing Fields Assn. Relief labour from the District Surveyor was used for the levelling work and a precept of £120 plus money in bank would fund a pavilion. W T Ames of Hillcroft (£220) won the contract to build the pavilion against Messrs G F Penn (£350).

Although the field was only a rough meadow, the village football team were already using it as they asked if they could continue playing there. They later asked if they could play cricket there in the summer, but that was refused.

From the beginning it was agreed that there should be tennis courts, a bowling green and a children's play area which was to be fully equipped with seesaws, giant stride, sandpit and swings.

To help equip the playground PPC asked Kent County Playing Fields Assn for a grant.

In the meantime Mr Baggeson, the well known local nurseryman, had advised the council on what trees and shrubs to plant, a water supply had been installed, the pavilion was completed and Mrs W A W Smith of Colebrook Park had gifted some laurel bushes.

In May 1933 Mr Ames gave a flag pole and the Bowling Green was officially opened (although it was not fit for use until 1935). The recreation ground was officially opened by Lord Camden in July.

After that the gifts really started to materialise and it is obvious that George Blackstock was only one of many benefactors to the project.

C D Norton gave £5/5/- for a clock in the pavilion

Mq Camden gave £5 towards some seats, which were subsequently purchased from Penns
Mr Baggeson planted the shrubs he had previously promised

F J Wheeler offered plants.

It was not until May 1935 that Mr Blackstock gave £46/15/- towards the cost of turfing and surrounding the Bowling Green, as 'formerly agreed and promised'. A month later the jubilee committee gave £7/8/5d for a surround for the jubilee tree and for seats and Mq Camden gave a further £2/2/- towards seats.

Throughout this time further work was being done. The tennis courts were laid, the Bowling Green was hedged and gated, gates were installed at the entrance, a drinking fountain was installed etc. Bye laws were written, tenancy agreements made with the bowling and tennis clubs and a groundsman was appointed.

Eighty years on we should be grateful to the vision of the parish council of the 1930s and to the many local benefactors who have provided us with such a legacy.

Kathryn Franklin

Leaflets | Programmes | Posters Booklets | Wedding Stationery | Calendars Business Stationery | Yearbooks | Brochures

Established for over 20 years, we are a family run printing company based in Pembury.
We have experience of working with small and medium sized businesses working within predefined budgets and offering a complete service from design to print if required, and 10 years experience of producing Funeral Service Sheets to Funeral Directors and Families.

We also produce exclusive car prints in conjunction with KAR-ART.

COMPOSING OPERATIONS LTD

PRE-PRESS • PRINTING • FINISHING • DOCUMENT MANAGEMENT

T: 01892 823988

E: compops@btconnect.com W: www.composingoperations.co.uk



Friendly professional service for all your foot care needs.

Surgery and home visits available. HPC registered.

Reduced fees for over 70s at surgery appointments.

67 Hastings Road, Pembury, TN12 4JS.

All major cards accepted

Surgery: 01892 822855 Mob: 07901922901

Whites Landscaping.co.uk

*Drives – Patios – Fences – Brickwork
Turf - Garden Design*



For free, no obligation quotes and advice please telephone 01580 891079 or 07986 843903

Member of the K.C.C. Buy With Confidence – Public Liability Insured – Extensive Portfolio and Written References

KEN WATTS MEMORIAL SEAT

You may recall the article in the summer 2012 edition of the PVN regarding the sad passing of Ken Watts and the desire of the Pembury Society to place a memorial seat on the Village Green in his memory. Finding the ideal position took some while bearing in mind that we had to allow room for our groundsmen to mow and also to be synonymous with something Ken had been involved in, so we thought the closer to the Village sign the better.

Having looked at several supplier options we chose a company from Swansea and I have to say that they could not have been more helpful in their advice and co-operation. On their advice a seat made of Iroko was selected.

Getting the seat from Wales to Pembury then became a bit of nightmare. Shortly after leaving their depot at 4am on the day of delivery snow swept the country but their driver made the decision to carry on and eventually made it to the Parish depot where it was kept in storage until conditions on the Green were suitable and it was finally installed on the morning of Saturday 18 May.

The unveiling was carried out by Ken's niece Mandy and the ceremony was well attended. The holes for the seat were dug by my friends Neil Franklin, Geoff Collins and the Village Groundsman Ryan Lewis. The cost of the seat, including VAT and carriage was £780.60 and on behalf of the Pembury Society I would like to offer our thanks to all those people who contributed to the seat and the Parish Council for their co-operation.

What was interesting was the fact that whilst we were digging the holes we had to alter the location several times because we came across what appeared to be the foundations of a previous building. Any ideas anyone?

The seat is a fitting tribute to Ken so let's ensure that it is looked after.

Hugh Boorman
Treasurer, Pembury Society



MY PLOT

These photos show two really good examples of why I am such a fan of the wrong colour veg – it's so easy to spot them! I only have to go up and down this row of purple mangetout three times instead of five or six [and still miss some!] Plus they have prettier flowers.

Likewise the yellow courgettes. Gone are the days of the courgette that must have been a gherkin one day, but was a full-blown marrow the next.

I did try to grow purple climbing French beans as well, but failed the first time and indeed the second time too. If it wasn't for being rescued with a gift of a third set of plants [thank you so much Chris] I would have none at all. I have heard other people struggled this year to get beans started, but now it's hot and humid and all's well that ends well etc., etc. I'll still be eating beans in October!

Unlike my sweet corn which also hated the long cold spring. Out of two packets of seed – some 50 to 60 seeds – I have two plants! They probably won't even pollinate so could be a total waste. It was way too late to start again as they need our whole summer to grow. ☹

However it's been an awesome soft fruit year; strawberries, more currants than I've ever known, gooseberries by the ton, and a return to bough-breaking quantities of plums on the tree.



Finally, some observations on first early potatoes – has anyone else noticed they don't flower? For the third year, I have waited for the classic sign of readiness, which didn't come. Then my second 'earlies' have caught up and I stopped being interested in the firsts. Next thing I know, they have died right down and I've blamed 'rubbish seed' [2 years ago], 'drought' [last year], or 'too cold' [this year]. Only this year I looked under the remains of the plant and there they were! Ready and waiting but under an already-finished plant – which had not flowered...

I'd welcome other people's thoughts?

Caroline Mazzezy

PEMBURY ATHLETIC UNDER 12S WIN THE TITLE!

Pembury's U12s started and finished last season in bright sunshine - the intervening seven months saw rain, snow, mud, high drama, quality football and a convincing title win in the Crowborough B division. We finished nine points ahead of the second placed Sevenoaks. The end of season statistics speak volumes.

Played	Won	Drew	Lost	Goals for	Goals Against	Points
14	13	0	1	71	16	39

The season started in September 2012, with a 5-1 away win at Langton Green Rangers with Pembury re-establishing their quick short passing game of previous seasons. The game was killed off in the second half as we went 5-0 up, Langton scoring in the dying seconds.

The summer reorganisation of the team had paid dividends – we weren't conceding goals any more and the stylish short passing was providing an end product. Notable was a debut of Freddie Hill at centre back alongside the centre back rock of Luke Hunton.

Against Broad Oak, Pembury were 5-0 up at half time and finished 8-1 winners in the end. We didn't know it at the time, but Broad Oak turned out to be strong contenders for the title, so the scale of this victory was significant. There were 2 goals each for Ben Edwards, Miles Christian and Alex Wood and a goal apiece for Louis White and Mark Gallagher. The powerful and creative central midfield partnership of Alex Wood and Tom Saltmarsh was starting to make us believe this could be a special season.

We then beat Hailsham away 6-1 win and Langton Green at home 11-2.



On 21 October we faced Ridgeway Tigers away and they put us under more pressure than in other matches of the season. Whilst the score finished 5-1, this was definitely the Day of the Defender! Luke Hunton's last ditch tackles and goal line clearances and Mark Gallagher's mastering of a highly talented right winger were critical. George Rackcliffe and Matt Reed gave the sort of solid performance at the back you need when under the cosh. Nick Ithier gave us the outlet we needed, scoring one and making two before half time.

Next we played out an epic encounter with Sevenoaks. Despite having the better game we found ourselves 2-0 down in the second half. A lionhearted performance from Miles Christian inspired the players to attack after attack, with Louis White scoring with 10 minutes to go. The Pembury boys intensified their attacks and Miles hit the bar. It ended with our first league defeat of the season but the fight showed by the players was a defining moment for the season to come.

On 18 November away at Crowborough, Alex Wood opened the scoring Nick Ithier constantly worried the opposition with his pace and skill on the right wing; Miles scored two then went straight to hospital to have his appendix out! But this was our first clean sheet of the season and the boys in defence, Luke Hunton, Freddie Hill, Matt Reed, George Rackcliffe, Mark Gallagher and Reece Reddick (Gk) could step up and take a bow!

We faced Uckfield Grasshoppers - second in the league. They took an early lead and despite wave after wave of attacks stood firm in defence. Deep in the second-half two Uckfield strikers broke clear - Reece Reddick roared out of his goal to smother the shot. A few minutes later Nick Ithier scored a crucial goal to level it. Manager Darren White wasn't satisfied with the draw and went for the jugular. He moved Mark from defence to attack and the result was probably the goal of the season volley from him in the last minutes. It felt like a very big win.

After a long Christmas break, we played on a waterlogged Uckfield pitch for the return fixture. Despite the conditions our short passing game still thrived and we dominated the first 15 minutes. Alfie Lenton had signed for us over the Christmas period and provided verve and energy from midfield, scoring on his debut. Tom Saltmarsh with his usual classy midfield performance scored our second but you felt we should have scored a third to kill the game off. Just before half time Uckfield scored with their first attack and you could sense the balance had shifted. Uckfield put us under more pressure early second half and scored the equaliser. Thanks to his usual box to box performance Alex Wood, with outstanding support from the swashbuckling Joe Ferguson, regained control of midfield and Louis White started pulling the strings up front, setting up Miles Christian and Tom Saltmarsh with the goals. It felt like we had knocked a strong contender out of the Championship race.

Another enforced break and we played Broad Oak away who were new title contenders. Again a very wet pitch, and again we dominated the first 15 minutes. Tom Saltmarsh teed up Matt Reed who scored from range. Miles scored another. Just before half-time Broad Oak took control and scored with their first shot. They continued to dominate and only a breathtaking save from keeper Reece, yet another goal line clearance from Luke and last-ditch block from Freddie Hill, kept us in the game.

And then a respite. We were awarded a penalty and you just knew we had to score to give ourselves breathing space. Up stepped a very cool Louis White who calmly blasted home. Just as well - Broad Oak scored a second shortly afterwards. But by now we were fighting back and held on to take the game.

At home to Hailsham we gained a 9-0 victory. Nick Ithier amongst the scorers in his debut as striker, Alex Wood scored another after playing the opponent's midfield off the park. Goal difference was giving us a big advantage at the top.

On 3 March we beat Ridgeway 6-0, including a glorious headed goal from Joe Ferguson.

We now knew that we could mathematically seal the divisional title when we played Sevenoaks on 14 April. It was to be a tense Championship decider.

Alex Wood opened the scoring with a header from a corner and then Sevenoaks pulled one back from a long-range free kick in an even game. Pembury got another, courtesy of a break away from Louis White and Sevenoaks again pulled level. We led again from an own goal off a Nick Ithier cross to lead 3-2 at half time.

Sevenoaks came out second half all guns blazing and hit the bar. Reece was quick off his line all game to snuff out a lot of attacks, and whilst Luke, Tommy Salt, George and Mark kept a solid line at the back, Joe Ferguson came off the bench to make tackle after tackle to win back control of the game. Alex Wood tormented the Sevenoaks defence with another amazing run and was scythed down in the box. Another critical penalty – another very calm Louis White to smash the ball home.

Back came Sevenoaks with another goal to make it 4-3. A season or two ago I think we may have buckled. But the Sevenoaks away fixture, and Uckfield and Broad Oak home games had given us the belief to reverse the flow of a game when against us. Another surging run from Miles down the left and the ball broke into the box. Matt Reed took a calm touch then swivelled to hit the ball with his left foot to score and secure the Divisional title.



HUMAN NATURE VRS NO NATURE

If ever there was a time when people needed to stop and think about nature and their own little piece of England, it's now.

Evidence over the past years has endlessly pointed to the damage that we humans have visited upon nature. David Attenborough goes as far as to say that humans are a plague on the planet and that we are destroying our native species, with some considered on the brink of no return.

The news of our native species' decline comes hard on the heels of the continued problems of bees, not just here in the UK, but worldwide. Colony Collapse Disorder just won't go away. Though of course many bee species seem to be in trouble.



An hour's debate could lead to fingers being pointed with the blame laid at the feet of several groups. The Government, Farmers, Industry, Housing. Would this help? I don't think anything would really be achieved, as shown by humans' past behaviours with continued refusals by various groups to do things differently as a whole.

It is also interesting that, in the 60th year of our current monarch's reign, there is movement towards recreating wildflower meadows in each county.

Getting gardeners to be a little more sympathetic toward nature isn't a new idea though one that is seemingly growing. We are extremely lucky that we have inherited a pond that has frogs, newts and dragonfly visiting. But we are also aiming at not just having a nice looking garden that produces food and flowers, but also one that has wildlife within it.

It would be nice to think that our gardens harboured all that wildlife can offer though most of us accept that the wildlife we get will be bees, hover flies, butterflies, slugs and snails and creepy crawlies. The hedgehog may be on the verge of extinction; there isn't one in my garden – but I would love one (or two actually, if there is to be the pitter-patter of tiny hedgehog feet). Foxes, Badgers, come hither!

If we all make an effort, you just never know what will turn up. What we do now will influence what we get in the future. There is much talk of saving the financial planet, but what is the point if we don't actually save the planet itself?

Probably the biggest effort people make today, as we are seemingly obsessed apparently, is to feed the birds in the garden.

So how about developing a 'rough' area in your garden. Maybe a few native plants that would encourage more invertebrates – and remember, not all creepy crawlies are bad for the garden, most do us favours so we can avoid using treatments.

With the likely increase in house building, continued mis-management of a Common Agricultural Policy within Europe and the lack of any real 'green' policies within any Government party, it simply comes down to us to save our wildlife because no one else is going to do it. It really is that simple. The big organisations can't do it alone. They have plenty of information on what we can do to help.

Human Nature can be defined as a group of characteristics that separate us from other animals – thinking, feeling and acting. And let's make one thing clear for sure – humans are animals. I say that as a statement of fact though it never ceases to amaze me how we continue to separate ourselves from the 'animal world'.

Can we apply those three characteristics – thinking, feeling, acting – in the argument of Human Nature vrs No Nature in our gardens today.

WALKING BACKWARDS FOR HOSPICE IN THE WEALD

As part of a Walking Badge, some of the Rainbows and Brownies were challenged to walk backwards round Pembury Recreation Ground this term. Over 50 girls and leaders took part in the Challenge with everyone bringing a donation for the Hospice.

After a fun challenge, the girls spent the rest of the evening playing in the Recreation Ground. The girls commented that it was difficult to 'steer' when you were walking backwards, and there were several minor bumps – luckily nothing serious!

Thanks to the girls and leaders who took part – we collected £161.73 which has been sent to the Hospice.

Moirá Allan
1st Pembury Brownies



Brownies

PEMBURY BOWLS CLUB



A group of very willing lady members helped in the kitchen at our Open Triples Turnaround Competition at the beginning of June. We were extremely fortunate with a break in the cold, wet and windy weather that seemed to last for weeks prior to the tournament. Groombridge were the winners this year and we thank our sponsors Henry Paul Funerals for their continued support. At last the weather has changed making it quite challenging to bowl in the raised temperature but the Weald, Tunbridge Wells Men's Thursday League, the Ladies league and the friendly matches between other clubs continue along with internal

club competitions, a busy time for another couple of months. Our next event is a Ladies Fun Day on Friday 23 August and we are hoping for good weather then, not very pleasant playing in the rain!

We have had several new members join the club this season but it is never too late to join in and have a go. Don't just pass by, come in and just watch, you will be welcome.

Barbara Scholten
Committee Member

'Quality Ironing @ an Affordable Price'

Jane's Ironing Service

- WEEKLY, FORTNIGHTLY & OCCASIONAL
- FREE COLLECTION & DELIVERY
- FAST TURNAROUND
- WELL ESTABLISHED & RELIABLE
- EXCEPTIONAL PROFESSIONAL SERVICE

Call Sarah: **07872 824908**



TIME TO PARTY YOURSELF INTO SHAPE!

**ZUMBA EVERY TUESDAY FROM 8PM – 9PM
AT PEMBURY SCHOOL, LOWER GREEN ROAD, PEMBURY**

COST £5 - DON'T MISS OUT!

**PLEASE BOOK VIA WWW.BOOKWHEN.COM/GETZUMBAFIT OR
CONTACT ADELE CLARK ON 07876 787869**

Get ZUMBA Fit.co.uk
DITCH THE WORKOUT. JOIN THE PARTY

Business Accountants for Business People

- Accounting and Bookkeeping
- Tax and Tax Planning
- Regulation and Compliance
- Advice and Support
- Cost Effective Fees & Cash-Flow Benefits
- All fees are agreed in advance
- We don't charge by the hour
- Straight & Direct Communication



CASPER HATCH MAAT, ICPA

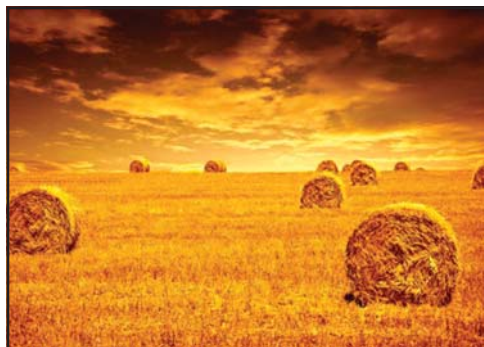
T:01892 824196

E:casper.hatch@aims.co.uk

W:www.aims.co.uk

AIMS®

Accountants for Business



FAMILY HARVEST SUPPER

**SATURDAY 5TH OCTOBER
AT THE VILLAGE HALL**

**This great fun night out for the whole family will include
party games, live music and a Ploughman's Supper.**

Bring your own wine and beer

**Tickets at £6 adults and £3 under 14s available from
the Chemist, the Post Office**

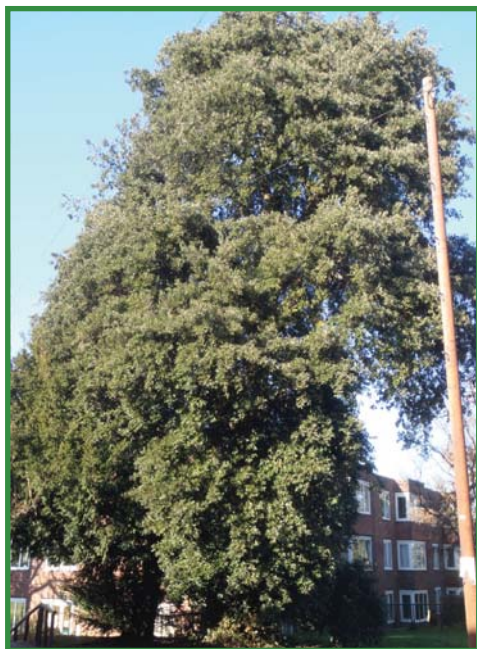
EVERGREEN OR HOLM OAK

This tree is in front of Sunhill Court and is quite likely to be mistaken for a Holly – or maybe the Yew that grows very close to it [on the left here]. Even its name acknowledges the similarity – Holm being an old name for Holly and Ilex being the name for all real Hollies. However it is an Oak – which is obvious as soon as you see the acorns in their usual cups.

It has glossy evergreen leaves with prickles when young and – again, just like the Holly – has smooth-edged leaves higher up out of the reach of grazing animals.

It was introduced to this country around 1580 but is not an old tree and it is an unusual choice of tree to plant in its position. They are more normally seen on the south coast where they put up with sea spray very well. This may be why it has thrived here despite the road salt it must receive, unlike the fate of a nearby Holly which is now pretty much dead, possibly from the effects of snow clearance?

Caroline Mazzezy



END OF TERM

“Wednesday 24th July 2013 saw the end of another school year and goodbye to another Year 6 at Pembury School. It has long been a tradition for families with children leaving and breaking up from school, to meet up at Pembury Recreation Ground on the last day of term. It was great to see so many families having fun and enjoying the warm weather.”



PEMBURY VILLAGE QUIZ NIGHT 2013

A very popular event in Pembury saw the greatest number of teams we have ever had in the Village Hall. Nearly every aspect of village life was represented and I hope everyone enjoyed the evening of fun, laughter and a bit of hard work. There were rounds for every taste from sport to history and general knowledge. The footpath walkers were determined to get the cup this year and were successful, donating their winning cheque of £300 to Cancer Research in memory of Brian Toseland, who was a stalwart of their team in the past, and died last year. The Pembury Trefoil Guild helped by marking, collecting papers, running the very successful raffle and helping the Scouts with the bar. Keith Merrin was as ever a great quiz master keeping us all on our toes and ably helped by his son Adam. There was a contest for the wooden spoon and it was even suggested there should be more than one awarded but the 'Try Hard' team just managed it! The proceeds of the evening amounting to £700 will go towards more work needed to maintain the 'Scout and Guide Headquarters' which provides activities for about 250 children in Pembury. As always they are desperate for adult help to run both the Guide and Scout units, as they cannot survive without help. Thank you to everyone who came and to Cllr Mrs June Crowhurst, Chairman of the Parish Council, who presented the winner's cup.

Janet Ditchett



PEMBURY GARDENERS' SUMMER SHOW

The Pembury Gardeners' Society held its Summer Show on Saturday 29th June at the Village Hall. The exhibits were of a high standard considering the weather conditions in the last few months. It was a pity that the sweet peas were down on last year but we expected this due to the weather. However, both floral art and cookery were up on last year. Lily Penfold did a great job in making a miniature garden with which she won the Maurice S Mephm cup for the best exhibit in the junior classes.

Trophies and medals were awarded for:

Sweet Peas - John Gorringe Award for most points to Jim Lear;

National Sweet Pea Medal for best exhibit to Jim Lear;

Roses - John Baggesson Rose Bowl for most points to Steve Jones;

Society Award for best exhibit to Brian Fryer;

Floral Art - Helen Reeves Trophy for most points to Mrs B Penfold;

Certificate for best exhibit to Miss V Penfold;

Fruit and Vegetables - R W Smeal Cup for most points to Steve Jones;

Handicraft - Standen Cup for most points to Mrs H Wood;

Cookery - Miss Hartman Cup for most points to Mrs M Karpinski.

Juniors - Maurice S Mephm Cup for best exhibit to Lily Penfold;

Certificates also went to Imogen and Oscar Riley.

We would like to thank all exhibitors and visitors who attended the show and hope to see you at the Autumn show on Sunday September 8th.

John Wood
Show Secretary



JEFF STEWART

Jeff Stewart who lives in Australia is trying to get in touch with Ann and Jane, pictured below in 1960. They lived in Woodside Road in the Pembury in the 1950s.

Jeff's parents, James and Marie (right) were friendly with the girls' parents and he thinks their surname is possibly 'Heale'.

If anyone knows of their whereabouts, please contact Jeff. His details are: PO Box 187, Yarra Junction 3797, Victoria, Australia. Email: jeffirstewart@live.com



I am going to move the years on a bit for this issue and then go back to where I was in the next issue. The reason I am doing this is because I have found a document that I thought I had lost. We already know that there were perhaps three water mills around Pembury, and the mill along Redwings Lane is the one still standing, Springrove Mill. However the one mentioned in the document below, dated 27th May 2012 relates to a much earlier period. Perhaps it was one that had been there on any one of the sites of the mills we already know about.

You will notice that the site of the mill was located at Elvinden (Elvindenne) as in Pembury. I have tried to find the location in Pembury of that name Eelvinden and with the help the Medway Archives have come up with an alternative name which could be Aluinden which evidently could mean a field name. Pembury, as you probably know was originally a clearing in the vast forest of Anderida but

was obviously a fertile area to require the various mills to grind the grains. The name of Simon de Wahull features several times in the history of Pembury, he granted the advowson, ie, the administration of the manors of Pepenbury Magna and Pepenbury Parva, alias Bowridge (Bopeep) to the abbey of Bayham in c1239.

I find it quite fascinating that so much was happening here in Pembury so long ago. I will continue with the history of Pembury and hopefully provide a picture of what was here prior to the Normans and the Old Church.

Hugh Boorman

226

PEDES FINIUM.

CLXXXIX.—(141 J.)

[27th May, 1212, 14 Jo.]

(In a recognizance of Mortdauncestor, William Crespin acknowledges to Simon de Wahull a mill in Elvinden, for which the said Simon grants the said mill to the said William, to hold of him and his heirs by the free service of nine shillings per annum.)

Apud Wintoniam, in Octabis Sancto Trinitatis, anno regni Regis Johannis quartodecimo.

Coram ipso domino Rege, Simone de Pateshull, Jacobo de Poterna, Henrico de Ponte Aldemer, Rogero Husearl, Justiciariis, etc.

Inter SIMONEM DE WAHULL, petentem, et WILLELMUM CRESPIUM, tenentem.

De uno molendino, cum pertinentiis, in ALVINDEN.¹

Unde recognicio de morte antecessoris. Summonia fuit inter eos in eadem Curia, scilicet quod predictus WILLELMUS recognovit predictum molendinum cum pertinentiis, esse jus ipsius SIMONIS.

Et pro hac recognicione et fine et concordia, predictus SIMON dedit et concessit eidem WILLELMO predictum molendinum, cum pertinentiis, tenendum sibi et heredibus suis, de ipso SIMONE et heredibus suis in perpetuum, per liberum servicium novem solidorum per annum, redditus eorum ad festum Sancti Michaelis, pro omni servicio et exactione.

¹ I.e. Elvindenne, in Pembury.

JOSEPH BODDY – PEMBURY SCOUT GROUP

Well done to Joseph Boddy for achieving all the available activity badges there are in the Cub Scout section. There are 33 badges ranging from the equestrian to the chef badge and Joseph did quite a few badges at home – including learning how to ride a horse!! It is the first time that anyone from Pembury Scout Group has achieved this and it is quite rare nationally too.

Joseph received his last badges at the Scout Group AGM where he was also awarded the Chief Scout Silver Award which is the highest award available to Cub Scouts. He has now moved on to Scouts and has already been away camping with the troop.

Keep it up Joseph and well done.

Michelle Usherwood
Group Scout Leader.



PEMBURY FOOTPATH WALKERS

Pembury Footpath Walkers is an informal, friendly rambling group based in the village. We meet at 2.15 pm on the first Saturday of the month and walks are usually between 4 and 6 miles in length, lasting about 2½ hours. We have three starting points in the village (Stonecourt Lane Bus Stop, Bo-peep Corner & The Camden) and walks are always circular. In June each year, we have a longer, all-day walk further afield.

We feel there is more to a walk than just putting one foot in front of the other and, although we do not dawdle, we do stop to admire the views or observe any unusual wildlife, be it flora or fauna, along the way. There are 21 miles of public footpaths within the parish to explore - through woods, open country and along green lanes.



We also try to support the maintenance and promotion of our local public rights of way.

New walkers are always welcome so why not come and join us? For more information contact the secretaries, **Neil & Kathryn Franklin, on 823212**

RECIPES

Oven Baked Scotch Eggs

6 Medium Eggs
1lb Sausage Meat
1tbsp Chopped Parsley
1 Egg (beaten)
6oz Breadcrumbs



1. Put the eggs in a saucepan, cover with water and simmer for about 8 minutes.
Drain and immediately cover with cold water to cool;
2. When cool, peel off shells and set aside;
3. Pre-heat oven to 190°, fan 170°, gas 5;
4. Mix sausage meat and parsley in a bowl
5. Using wet hands, divide sausage meat into six portions;
6. Shape each portion into a flat patty, put an egg in the centre of each and wrap the sausage meat around the egg making sure they are completely covered;
7. Put the beaten egg in a bowl and the breadcrumbs on a plate;
8. Dip the sausage-coated eggs into the beaten egg and then roll in the breadcrumbs to coat completely;
9. Put on a baking sheet and bake for about 25 minutes until golden.



No-Cook Chocolate Tart

8oz Crushed Biscuits
1tbsp Golden Syrup
4oz Dark Chocolate
2tbsp Icing Sugar – extra for dusting
3tbsp Crème Fraiche

4oz Butter
4oz Milk Chocolate
1tsp Vanilla Essence
7floz Whipping Cream
8oz Raspberries



1. Melt the butter with the syrup and stir in the biscuits;
2. Press into the base of a rectangular tin. Chill while the filling is made;
3. Break-up the two chocolate bars and melt in a bowl in the microwave.
Stir in the vanilla essence and sift in the icing sugar;
4. Whip the cream until it just holds its shape. Fold into the melted chocolate;
5. Pour into the prepared tin and smooth the top;
6. Chill for at least two hours;
7. Cut the tart into fingers and serve each slice with a teaspoon of crème fraiche topped with a raspberry and dust lightly with icing sugar.



MEET YOUR LOCAL OFFICERS IN WEST KENT

Ann Barnes, Kent's Police and Crime Commissioner, explains her manifesto promise to deliver Mobile Police Stations near you...

'When I was campaigning to be elected Police and Crime Commissioner for Kent, one of my main manifesto promises was to launch a fleet of 'mobile police stations', to mainly serve rural parts of the county, as a way of boosting visible community policing in areas where there was a perceived lack of police presence. I wanted to make it easier for you to contact your local officers and get the help and advice you need.

When I make a promise, I never break it – so in late June I was delighted to be able to launch the first phase of Police Contact Points in East Kent – and now it's your turn in the west of the county.

As of 7th August they have been visiting various locations in and around Tonbridge & Malling, Tunbridge Wells, Sevenoaks and Maidstone – so you may already have seen them, and perhaps even visited one!

I do hope you've already heard about them, but if you haven't, the Police Contact Points are a major new initiative, as they will serve 180 locations around the county each month - making a total of 360 visits. Hopefully you can see what a positive impact this could make to isolated communities around our county. You can use them to report a crime or anti-social behaviour, discuss any local policing issues or concerns, or just to pop in and find out who your local Police Community Support Officer is and get to know them.

When I go out and about around the county to speak to the public, the one thing I'm told time and time again is that you, the people of Kent, want more visible community policing, so I really hope the Police Contact Points are utilised. Please spread the word - so as many people as possible can benefit from them.



Your local Police Contact Point will be in Tunbridge Wells every other Thursday evening from 6pm – 7.30pm in the main car park of Pembury Hospital. The next visits are Thursday 5th September and Thursday 19th September, so I really hope you'll be able to go along. There are dates for October as well so do check out my website and have a look www.kent-pcc.gov.uk.

Even if you don't have anything to report or discuss, your local Police Community Support Officer would be happy to meet you and have a chance to introduce themselves. I would really love your feedback on what you thought, so do get in touch.'

PEMBURY'S HISTORY NOW ON A DEDICATED WEB SITE

Pembury's website was created by, and is still maintained by, Steve Morton. It contains all there is to know about modern Pembury, and some pages about the past. There has been a recent demand to expand the history section, and it was decided to create a new web site to house the history content. Much has been written about Pembury's history over the years and a lot of it is difficult to find these days as some books are out of print.

The new web site will act as focal point for these lost gems of knowledge. It will index and link to many of the Pembury in the Past articles. It contains many customised maps to illustrate the locations of lost sites, and maps that enhance the descriptions of bygone Pembury - where to find the 3 blacksmiths' workshops, the 12 pubs, the bus garage, antiques shop, brick & tile factory, the swimming pool, fishmonger, 3 banks and much more. There are a lot of old photographs and there will be many more to follow. We have sections for historic pictures and maps, lists of the old shops and pubs, but nothing as yet about the churches, manors, farms or housing development.

This is an open, on-going project. Volunteers wishing to help in the compilation of these topics would be welcome.

Tony Nicholls

Please take a look - www.pembury.org/history

REPORTED CRIME IN PEMBURY

I cannot believe that we are past the halfway mark this year already. Unfortunately the crime figures do not make good reading, especially when we expect to see a dramatic reduction during the spring and summer months. The total figure for April, May and June is 54, which is only one down on the previous quarter. There always used to be a marked reduction in spring and summer but the average figure is now creeping upwards, not downwards as the 'powers that be' would have us believe. The main items again are violent crime, theft and criminal damage. Nationally we are told that there is this dramatic reduction in overall crime but being the cynical person that I am, I cannot believe that the would-be criminals out there have taken sympathy with police, (because police numbers are down), and have agreed to back off for a while. I don't think so...

I have a large degree of sympathy for the police who are expected to provide a better level of service with fewer front line full-time officers

and I have to ask again as to whether certain crimes are being de-categorised to avoid being included in the main crime reports. Please give the police all the support you can but also let me know if you do not receive a crime incident number when you report a crime.

Be careful out there.

Hugh Boorman



CRIME FIGURES



Corporate Development
Business Information Unit

Recorded crime in Pembury

If a road name does not appear in the table below, it is because no crimes have been reported to Kent Police in that road during the specified period

Crime type by reported month	Violent Crime	Burglary Dwelling	Burglary Other	Theft From Motor Vehicle	Theft of Motor Vehicle	Criminal Damage Offences	Theft Offences (exc vehicle offences)	Drug Offences	Fraud & Forgery	Other Offences	Total recorded crime
April 13	6	1	0	0	1	3	6	1	5	0	23
May 13	4	0	2	2	0	7	3	0	1	0	19
June 13	3	1	0	0	1	1	3	1	1	1	12
April - June 2013	13	2	2	2	2	11	12	2	7	1	54

Crime type by road name	Violent Crime	Burglary Dwelling	Burglary Other	Theft From Motor Vehicle	Theft of Motor Vehicle	Criminal Damage Offences	Theft Offences (exc vehicle offences)	Drug Offences	Fraud & Forgery	Other Offences	Total recorded crime
A21 A	0			0	0	0	1	0	0	0	1
BEAGLES WOOD ROAD	1			0	0	0	0	0	0	0	1
BELFIELD ROAD	1			0	1	0	0	0	0	0	2
HASTINGS ROAD	0			0	0	1	0	1	0	0	3
HENWOOD GREEN ROAD	0			1	0	1	1	0	0	0	3
HENWOODS CRESCENT	0			0	0	1	0	0	0	0	1
HIGH STREET	0			0	0	4	2	0	4	0	10
KNIGHTS RIDGE	1			0	0	0	0	0	0	0	1
LOWER GREEN ROAD	0			0	0	0	1	0	0	0	1
MAIDSTONE ROAD	2			1	0	2	0	0	0	0	5
OLD CHURCH ROAD	0			0	0	0	1	0	1	0	2
PEMBURY ROAD	0			0	0	0	0	0	2	1	4
RIDGEWAY	1			0	0	0	0	0	0	0	1
SANDHURST AVENUE	0			0	0	0	1	0	0	0	1
SWEEPS HILL CLOSE	0			0	0	1	0	0	0	0	1
THE GROVE	0			0	0	0	0	1	0	0	1
THE PADDOCK	0			0	0	0	0	0	0	0	1
TONBRIDGE ROAD	7			0	1	1	5	0	0	0	14
WOODSIDE ROAD	0			0	0	0	0	0	0	0	1
TOTAL RECORDED CRIME (EXC BURGLARY DWELLING & OTHER)	13	2	2	2	2	11	12	2	7	1	54

The data above was extracted from Kent Police's LIVE crime recording system GENESIS on 4th July 2013 at 15:00 hrs, and is therefore subject to change

FOR YOUR DIARY

For more up to date information on events see the online diary at www.pembury.org.

Village Market – Village Hall, Tuesdays 9am – 11.30am, term time only.

Town & Country Housing Group – Clinic – last Tuesday in the month.

CAB – Pembury Library – alternate Tuesdays 9.30am – 11.30am.

For more up to date information on events see the online diary at www.pembury.org.

SEPTEMBER 2013

2nd	Floral Art Group	8.00pm	Baptist Church Hall
3rd	Pembury U3A	2.00pm	Village Hall – signing-on event - interest groups
4th	St. Peter's Mothers' Union	2.00pm	Talk by Judy Cuthbert
6th	Evening WI	7.45pm	Village Hall 50 ways to tie a Scarf
7th	Friends of Pembury Old Church	10.00/12.00	Coffee on the Green
7th	Pembury Footpath Walkers	2.15pm	Meet at Bo-Peep Corner
8th	Pembury Gardeners'	2.00pm	Village Hall – Autumn Show
9th	Parish Council Meeting	8.00pm	Parish Office - Recreation Ground
12th	Afternoon WI	2.00pm	St. John Ambulance Service

OCTOBER 2013

1st	Pembury U3A	2.00pm	Village Hall - Talk on Tiller Girls
4th	Evening WI	7.45pm	Village Hall - Talk on Kent Ghosts
5th	Pembury Footpath Walkers	2.15pm	Meet at Stonecourt Lane
5th	St. Peter's Harvest Supper	5.30pm	Village Hall - Tickets required
5th	Pembury Primary School	7.30pm	Barn Dance at the School
7th	Pembury Parish Council	8.00pm	Parish Office - Recreation Ground
7th	Floral Art Group	8.00pm	Baptist Church Hall
9th	St. Peter's Mothers' Union	8.00pm	Deanery event at St. Lukes
10th	Afternoon WI	2.00pm	Village Hall - Saving Memories
13th	Pippins Apple Day	All day	Fun events and sale at Pippins Farm
19th	St. Anselms Autumn Event	10.00am/12.00	Ideas for Christmas
24th	Pembury Society Meeting	7.30pm	St. Peter's - Speaker - Ann Barnes
26th	R N L I Fayre	10.00am/12.00	St. Anselms Catholic Hall.

NOVEMBER 2013

1st	Evening WI	7.45pm	Village Hall - Fun Music presentation
2nd	Pembury Footpath Walkers	2.15pm	Meet opposite the Camden Arms
4th	Parish Council Meeting	8.00pm	Parish Office - Recreation Ground
4th	Floral Art Group	8.00pm	Baptist Church Hall
5th	Pembury U3A	2.00pm	Village Hall - Speaker
6th	St. Peter's Mothers' Union	8.00pm	St. Peter's - Photographic presentation
7th	Japanese Prisoner of War	7.30pm	St. Peter's Church - Fergus Anckorn Talk (with magic)
8th	Pembury Firework Display	7.00pm	Recreation Ground
9th	Fundraising Event	2.30/5pm	Village Hall (in aid of Breakthrough Breast Cancer)
10th	Remembrance Sunday	11.00pm	Civic Service with wreath laying
14th	Afternoon WI	2.00pm	Village Hall - Gemology
30th	Pembury School Christmas Fair	11.00am/1.00	Pembury School

DECEMBER 2013

2nd	Pembury Parish Council	8.00pm	Parish Office - Recreation Ground
2nd	Floral Art Group	8.00pm	Baptist Church
3rd	Pembury U3A	tbc	Village Hall – Christmas Dinner
4th	St. Peter's Mothers' Union	tbc	Christmas Party
6th	Evening WI	7.45pm	Village Hall – American Supper and Quiz Night
7th	St. Peter's Church	10.00am/12	Christmas Fayre
7th	Pembury Footpath Walkers	2.15pm	Meet at Stonecourt Lane Bus Stop
12th	Afternoon WI	tbc	Christmas Lunch

PRIVATE TREES NEAR/OVERHANGING THE HIGHWAY

Dear Resident

I have previously worked with your parish council in publishing information on vegetation. I would like to take the opportunity to expand on this by providing some guidance on the maintenance of private trees, and how you can work with us in mitigating the consequences to the highway network and highway users when trees and branches uproot and fall.



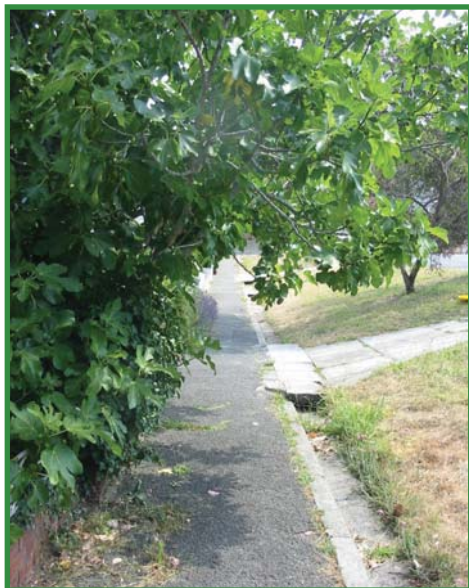
In many cases fallen trees will result in inconvenience to road users when we have to close the road and clear the debris, however the worst case scenario can be serious injury or even fatalities, the most recent example being the loss of life at Sandhurst Road, Tunbridge Wells in 2012.

Kent County Council regularly inspects its own street trees, and trees on its property such as publicly funded schools and other council facilities. **However this forms a small fraction of all trees within falling distance of the highway, the majority of which are private.**

The consequences of fallen trees on the highway can be devastating and prevention is certainly better than cure in regards to their maintenance. If you have trees on your property, within distance of, or overhanging the road, I would appreciate your time in reading the points below.

HOW YOU CAN HELP

- Kent County Council Highways & Transportation does not, and cannot inspect every private tree within reach of the highway. Help us ensure all relevant trees are monitored by regularly inspecting your private trees.
- Monitor them for signs of deadwood/dead bark, fungus infection and root stability/exposed roots. A tell tale sign of a tree in trouble is usually seen in the crown during summer, where the tree lacks foliage and fails to blossom.
- If you rent your property and have any concerns on trees within its boundaries, please contact the landowner and/or letting agent to make them aware.
- If you own your property and have any concerns on your trees please contact an appropriate and qualified tree surgeon as soon as you are able, to inspect. Please note that Kent County Council does not have the resources to provide this service.
- Occasionally our inspections of the roads will flag up a potential issue with private trees. If this is the case we will write to you regarding the next steps you will need to take. Please help us by following our instructions promptly. Please do not ignore any specific issue that we raise with you as you will be liable for the costs and consequences for any incident involving your trees once we have made you aware.
- Please be aware that under Common Law It is the land owner's responsibility to regularly have their trees checked for health and stability as part of a general duty of care.



ALSO, PLEASE CONSIDER THE FOLLOWING

- If you are planning on moving to a new property, particularly if it's a rural location it might be worth speaking with the current owner regarding any issues they have had with trees on the property. A visual inspection of any trees from the roadside may help you identify any future problems, and prevent surprises later on.
- If you have any relatives who may be unable to monitor their trees on their property, it may be worth helping them in this regard as they can still be liable if anything goes wrong.
- Names of contractors can be found in your local directory or on the internet. Of course I would encourage you to do your own research on any potential contractor you choose to ensure they are qualified and reputable.

Thank you for taking the time to read this article. I do appreciate that it is not always possible for landowners, including KCC, to prevent all incidents involving trees despite our best efforts and practices. However by ensuring all trees in the parish are regularly inspected by the appropriate owners, we can work together in minimising the risk to the highway and those who use it.

Jonathan Dean

**Highway Steward
Kent County Council Highways &
Transportation**



TUNBRIDGE WELLS AND DISTRICT CAB

I paid the fees for a plumbing training course over 3 months ago but I haven't received course materials or been able to get in touch with the company to book my practical training. It looks like the company has closed down.

This is clearly a very frustrating situation. If you can't get in touch with the company it could mean that it has moved to another office, closed down or that it's a fake company and the course was a con. You can check with Companies House to see if it is registered firm www.companieshouse.gov.uk. If the course was accredited by a body, check with accreditation body to see if it was legitimate. If you find that the company was fake you should report it to Action Fraud on 0300 123 2040. If you've paid for the course by credit or debit card you may be able to get some money back from your bank. The Citizens Advice [adviceguide](http://adviceguide.org.uk) website www.adviceguide.org.uk and consumer service 08454 04 05 06 can tell you more about how to find out if a trader has stopped trading and about extra protection if you buy on credit or debit card.



**Advice line 01892 533880 or 01580 714936
advice@twcab.cabnet.org.uk**

TUNBRIDGE WELLS AND DISTRICT CAB

I'm behind on my energy bills, credit cards and rent and my phone is ringing constantly with people demanding money. The stress is getting me down and I don't know how I'm going to pay what I owe. What can I do?

The most important thing is not to panic. Remember that this is a common problem and help is freely available from Citizens Advice.

Dealing with debt is daunting and at times seems insurmountable, but it is better in the long run to tackle your debts rather than taking out more loans.

You first need to get a clear idea of who you owe money to: make a list of your creditors then work out which debts you should prioritise.

The most important debts are those that would have the most serious consequences if you didn't pay them. You should look to get rent and energy bills sorted first so your home isn't at risk and so that your water and electricity keep running.

Once you know your priorities, you should try to get a clear idea of how much money you have spare. Make a list of all your income and spending.

Go through your spending line by line and think about any savings that you could make: can you cut any spending? Or switch your energy supplier? Can you walk to work and not take transport?

Next, give your debtors a call. Stay calm and be honest with them: tell them how much you have available and see if you can agree a repayment plan with them.

If you can't see any spare cash and do not have anything you can sell to make ends meet, then it is much better to first seek help than to take out a loan. Loans can sometimes end up getting you more into debt rather than helping you.

You should remember that Citizens Advice can help you at any stage, and more advice is available here:

http://www.adviceguide.org.uk/england/debt_e/faq_index_debt/faq_debt_debts_getting_out_of_control.htm

Advice line 01892 533880 or 01580 714936 - advice@twcab.cabnet.org.uk



JAPANESE KNOTWEED

It is only quite recently that I have found out how dangerous Japanese Knotweed is, not only to the environment but also to structures, concrete and roadways. For those who don't know the origin of this plant it was first introduced into this country as an ornamental plant in the 19th century. Unfortunately, over time it has established a wide range of habitats including roadsides, riverbanks and derelict buildings and out-competes native plants and animals.

I have enclosed a picture of the plant for those who have never seen it, but it is lush green in colour, large shovel-shaped leaves, a stem that is similar to bamboo in appearance and produces quite a mass of white flowers around September or October.

It spreads through its crown, rhizome (underground stem) and stem segments rather than its seeds. It can cause havoc below concrete and tarmac, coming up through the resulting cracks and damaging road ways and buildings.

It can grow a metre in one month and it cannot be guaranteed to have been eradicated even if soil was removed at a depth of five metres or seven metres from the stem. The reason I have brought it to your attention is that it is appearing in several areas around the village and the relevant authority has been informed. If, in the unfortunate event that you find it on your property or notice it on your neighbours do not attempt to dig it out or move any pieces cut down until you have sought advice from the Environmental Agency or your local authority.

For more information and to realise the potential danger of this plant just go on to Google and enter Japanese Knotweed. If you have not seen it before go along Romford Road and at the bottom of the dip you will see a large clump surrounding the lamp post. Of course it might have been removed by the time you read this.

Hugh Boorman



YOUR REPRESENTATIVES

PARISH COUNCIL



Cllr Mrs June Crowhurst
44 Elmhurst Avenue, TN2 4DA
Tel: 824873
Chair of Parish Council
Chair of Amenities, Christmas Lights and Pride in Pembury (inc. Public Relations) Working Group



Cllr Mrs Sally Osborn
34 Canterbury Road, TN2 4JT
Tel: 822726



Cllr Sean Cawley
c/o Henry Paul Funerals
10 High Street, TN2 4NY
Tel: 825505
Chair of Environment/Environmental Issues (inc. Allotments & Burials) Working Group



Cllr David Coleman
22 Ridgeway, TN2 4ER
Tel: 823402
Vice Chair of Parish Council
Chair of Planning & Highways Working Group



Cllr Mrs Janet Ditchett
7 Cornford Park, TN2 4PW
Tel: 822586
Vice Chair of Amenities, Christmas Lights and Pride in Pembury (inc. Public Relations) Working Group



Cllr Steve Rose
80 Woodhill Park, TN2 4NP



Cllr Patrick Gillan
1 Knights Close, TN2 4EL
Tel: 825324



Cllr John Hine
68 Woodhill Park, TN2 4NP
Tel: 824393
Vice Chair of Planning & Highways Working Group



Cllr Paul Roberts
107 Beagles Wood Road, TN2 4JJ
Tel: 822602
Chair of Audit, Finance and Personnel Working Group



Cllr Mrs Chris Snow
1 Cornford Park, TN2 4PW
Tel: 825428



Cllr Duncan Hope
80 Woodhill Park, TN2 4NP
Tel: 824496
Vice Chair of Audit, Finance & Personnel Working Group



Cllr Mrs Shelley Harris
29 Lower Green Road, TN2 4DZ
Tel: 822544



Cllr David Reilly
8 Forest Way, TN2 4DZ
Tel: 458216
Vice Chair of Environment/Environmental Issues (inc. Allotments & Burials) Working Group



Clerk to Pembury Parish Council
Barbara Russell,
c/o Parish Council Offices,
Lower Green Recreation Ground
Lower Green Road
Pembury, TN2 4DZ
Tel: 823193
Email: clerk@pemburypc.kentparishes.gov.uk

Deputy Clerk to Pembury Parish Council

c/o Parish Council Offices,
Lower Green Recreation Ground
Lower Green Road
Pembury, TN2 4DZ
Tel: 823193
Email: deputy@pemburypc.kentparishes.gov.uk

BOROUGH COUNCIL

Cllr Paul Barrington-King, 57 Henwood Green Rd, TN2 4LH Tel: 825144
Cllr Mrs June Crowhurst, 44 Elmhurst Avenue, TN2 4DA Tel: 824873
Cllr Mike Tompsett, 14 Gimble Way, TN2 4BX Tel: 822711

COUNTY COUNCIL

Mr Chris Hoare
KCC, Sessions House, County Hall, Maidstone, ME14 1XQ Tel: 08457 247 247

VILLAGE ORGANISATIONS

AGE CONCERN

Mrs Sandra Springett. Tel: 522591

AMBERSIDE DANCE STUDIO

Principal: Victoria Mustill-King. Tel: 724777

CATHOLIC CHURCH

Fr. Ed Tomlinson. Tel: 825009

CONSERVATIVE PARTY

Simon Bishop, 18 Cornford Park. Tel: 822302

FRIENDS OF PEMBURY PARISH CHURCH

Chairman: Mrs S. Clarke, Little Stanton, Romford Road.
Tel: 823932

GUIDES, BROWNIES AND RAINBOWS

Mrs M. Allan, 9 Henwood Green Road. Tel: 822373

HOSPICE IN THE WEALD

Maidstone Road. Tel: 820500

KENT COLLEGE

Headmistress: Mrs Sally-Anne Huang. Tel: 822006

KENT COLLEGE PREP SCHOOL & NURSERY

Headmistress: Mrs Ann Lawson. Tel: 820204

LABOUR PARTY

Dave & Sally Osborn, 34 Canterbury Rd. Tel: 822726

LIBERAL DEMOCRATIC PARTY

David Mills. Tel: 825577

LITTLE RASCALS

c/o PBC Office. Tel: 825590

MULTIPLE SCLEROSIS SOCIETY

TW District. Tel: 0845 6037882

NATIONAL FEDERATION OF THE BLIND, UK

Michael Coggles. Tel: 822705

NEIGHBOURHOOD WATCH

Janet Ditchett. Tel: 822586

OUT AND ABOUT CLUB

Sue Giles. Tel: 823318

PEMBURY ATHLETIC (YOUTH) FOOTBALL CLUB

Colin Forward. Tel: 825436

PEMBURY BAPTIST CHURCH

Church Office. Tel: 825590

PEMBURY BOWLS CLUB

Phil Griffin. Tel: 01892 823129

PEMBURY BRIDGE CLUB

Geoff Plummer. Tel: 824652

PEMBURY COMMUNITY LINK GROUP FOR HOSPICE IN THE WEALD

Graham Hayler. 9 The Gill. Tel: 824680

PEMBURY COMMUNITY WORKING PARTNERSHIP

Parish Office. Tel: 823193

PEMBURY CRICKET CLUB

Secretary/Treasurer: Mr A Weaver, 51 Heskett Park
Tel: 824362

PEMBURY DAY CENTRE

c/o PBC Office. Tel: 825590

PEMBURY ECO GROUP

Rick and Masha Bayles. Tel: 822865

PEMBURY FOOTBALL CLUB

Saturday Secretary: Bill Baker. Tel: 825822

Sunday Secretary: Phil Craxton. 823928

Chairman: Andy Rice-Tucker. Tel: 822483

PEMBURY FOOTPATH WALKERS

N. & K. Franklin, 11 The Meadow. Tel: 823212

PEMBURY GARDENERS' SOCIETY

Ann Purton. Tel: 824223

PEMBURY PAVILION BOOKINGS

Gillian Mayrick. Tel: 824852

PEMBURY PLAYERS

James Whitehorn. Tel: 824854

PEMBURY SCHOOL

School Office. Tel: 822259

PEMBURY SCHOOL ASSOCIATION

Chair: Jo Alfieri. Tel: 824603

PEMBURY SCHOOL HOUSE NURSERY

Teacher in charge: Rachel Teigen. Tel: 825580

PEMBURY SHORT MAT BOWLING CLUB

Arthur Storey. Tel: 822509

PEMBURY SOCIETY

Chairman: Lea-Ann Owen. Tel: 822929

PEMBURY TENNIS CLUB

Mrs S. Smith, 2 Ridgeway. Tel: 822405

PEMBURY U3A

Membership Secretary: Andrew Richardson. Tel: 824012

PEMBURY UPPER AND OLD CHURCH

Rev'd. Douglas Robertson. Tel: 824761

PEMBURY VILLAGE MARKET

Karol Young. Tel: 823413

PEMBURY YOUTH THEATRE ACADEMY

Dee Parrott. Tel: 825773

PEPENBURY

Principal: Mr Roger Gibson, Cornford Lane. Tel: 822168

POLICE COMMUNITY SUPPORT OFFICER

PCSO Nick Brown. Tel: 07772 226001

ROTARY CLUB OF SOUTHBOROUGH & PEMBURY

Secretary: Nigel Stratton. Tel: 822936

ROYAL NATIONAL LIFEBOAT INSTITUTION

Peter Chartres, 54 Woodhill Park. Tel: 823759

SCOUTS, CUBS AND BEAVERS

Michelle Usherwood. Tel: 822020

SCOUT & GUIDE HQ MANAGEMENT TEAM

Michelle Usherwood. Tel: 822020

ST. ANSELM HALL ENQUIRIES

Janet Ditchett. Tel: 822586.

ST. PETER'S MOTHERS' UNION

Secretary: Tina Walters. Tel: 822545 (after 4pm)

TABLE TENNIS CLUB

John Burleton. Tel: 823250

THE ORDINariate OF OUR LADY OF WALSINGHAM

Fr. Ed Tomlinson, 31 Henwoods Crescent. Tel: 825009

TOWN & COUNTRY (HIGH WEALD HOUSING)

Housing manager: Antony Allder.
Tel: 0845 8731 321

TREE WARDEN

Caroline Mazzey. Tel: 822493

TUNBRIDGE WELLS ACCESS GROUP

Gill Pavely. Tel: 822605

TUNBRIDGE WELLS & DISTRICT VICTIM SUPPORT SCHEME.

Tel: 513969

VILLAGE HALL

Manager (bookings): Rachel Windus. Tel: 822837

WHEELCHAIR LOAN (24 hour maximum, for Pembury Residents)

Pauline Hawker. Tel: 824327

WOMEN'S INSTITUTES

Afternoon: Mrs Margaret Buss. Tel: 822530

Evening: Jane Jones. Tel: 823601



HENRY PAUL
FUNERALS



HENRY PAUL FUNERALS

Contemporary and Traditional Services

HENRY PAUL FUNERALS is a traditional family owned funeral directors purposely dedicated to providing distinct levels of service, choice, dignity and care to bereaved families in Pembury, Tunbridge Wells and surrounding areas.

- 24 Hour Emergency Service • Home Visits • Private Chapel of Rest
- Full Fleet of Modern & Vintage Vehicles • Floral Tributes • Catering •
- Memorial Masonry • Pre-paid Funeral Plans • Repatriation

01892 825505

www.henrypaulfunerals.co.uk



10 High Street, Pembury, Tunbridge Wells, Kent TN2 4NY

