

# PEMBURY VILLAGE NEWS

Issue 142  
SUMMER 2010

## CONTENTS

Chair's Report	3	Pembury Players	21
Pembury Arts & Crafts Fair	5	Pembury Village Quiz	23
Speedwatch – We Need You	5	Pembury Women's Institute Celebrates 90 Years	23
Summer Fun at Pembury Fun Day	7	Pembury's Own Victoria Cross Holder – Part 2	25
Pembury School Are The Champions!	7	Pembury School Association	27
King William Reborn	9	Neighbourhood Watch in Pembury	27
Snippets	9	Green Gardening – Fascinating Wasps	28
My Plot	11	Pembury Hospice Shop	29
The Pembury Society	11	Pembury Bowls Club	31
Kent College	13	Pembury Trees – Silver Birch	31
Tunbridge Wells 10K Run and 1K Fun Run	13	People of Pembury in the Past	31
Easter Fun Day	13	Have You Spotted The Pembury Parrots?	33
A Gem of a Market	15	Pembury Gardeners' Society	33
Whatever Happened to Easter Bonnets?	15	Crime In Pembury	34
Pembury Tennis Club	16	For Your Diary	35
Pembury Senior Football Club	16	Rosie's Recipes	36 & 37
Litter-Pick-A-Mile	17	Church Times	37
Waterfield House Surgery	17	Your Representatives	38
Pride In Pembury	19	Village Organisations	39
Pembury People – Barbara Russell	20		
Pembury Cricket Club	21		

Cover photograph by Colin Harvey.

### *Editorial Working Group:*

Louise Fowle (Editor), Paul Barrington-King, Rosie Bass, Masha Bayles, Rick Bayles, June Crowhurst, Janet Ditchett, Melanie Karpinski, Sally Osborn and Kathy Wallwork.

*Please note: The Editor's decision is final on whether or not to publish any item submitted. The Editor reserves the right to edit (that is to cut, précis, alter, correct grammar and spelling) any item published.*

## PEMBURY VILLAGE NEWS

Editor: Miss Louise Fowle  
c/o 6 The Grove, Pembury TN2 4BU

Distribution enquiries: Parish Clerk 823193

**Email:** [pvn@pembury.org](mailto:pvn@pembury.org)

**Website:** [www.pembury.org](http://www.pembury.org)

Pembury Village News is published four times a year by the Parish Council, but the views expressed in the magazine do not necessarily represent official council opinion or policy.

Typeset and printed by  
Folderspring and Heronswood  
Press, Tunbridge Wells.

## CHAIR'S REPORT

**A**FTER THE awful winter we had with the ice and snow, it's been such a joy to be around the village to see spring emerging. The banks of primroses and violets are such a welcome change from all the snow.

We are coming to the end of another Council year. It's been a busy year, with our various work programmes and my thanks go to all our Councillors for their hard work. Sadly, due to relocation, we have lost the Reverend Matthew Jackson and Steve Morton; both will be greatly missed as they contributed greatly to the Parish Council with their clear, concise input and strong work ethic.



If there is anyone in the village reading this who feels they would enjoy giving back to their community and a challenge, please get in touch with the Clerk and put your name forward for one of the vacant positions on our Council. We do work hard for the village and it's an honour to be part of the Council, so have a think about applying, you would be very welcome.

Our environmental push is really up and running and new life is now emerging from the Old Coach Road project. It will be so interesting to watch and see what will emerge and grow that perhaps has been dormant for years, but we must be careful to cherish Pembury's own conservation reserve.

The next thing on the social calendar is the Musical Picnic on the Green on 19 June and I really look forward to seeing you all there with your families. Fingers crossed for warm weather! It's really fantastic with all the picnics being laid out; very tempting arrays of food. It's always such a lovely social event.

Pride in Pembury is going to be, I hope, well supported with all your wonderful front gardens and containers. The colours of the displays are so fantastic, so make sure you are ready to enter. See the flyer with this magazine for your entry form.

All the village businesses are entering this year for the Best Commercial Frontage, the High Street and Hastings Road are going to be really worth looking forward to, so please, gardeners, get ready for the off! You all do such hard work in making the competition worthwhile, as well as raising the profile of Pride in Pembury.

Lastly, thank you to all who give encouragement, practical advice and help in all our endeavours as a Parish Council to ensure Pembury stays so special.

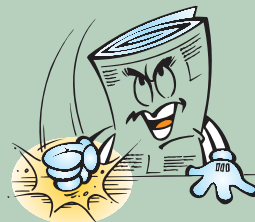
**June Crowhurst**, Parish Council Chair

### **COPY FOR NEXT ISSUE**

*Any news items or articles for possible inclusion in the next issue of this magazine must be forwarded to the Parish Office, c/o 6 The Grove before*

**1 August 2010.**

*If you use a computer to type your article, it would be extremely helpful if you could send it (and photos) in by e-mail to [pvn@pembury.org](mailto:pvn@pembury.org)*



**Leaflets ● Flyers ● Programmes ● Posters**  
**Booklets ● Stationery ● Calendars**  
**Dvd Sleeves ● Cards ● Yearbooks ● Direct Mail**  
**Design ● Binding ● Scanning ● Photocopying**

Established for over 20 years, we are a family run printing company based in Pembury.  
 We provide a fast, high quality, competitively priced service, on both large and small quantities.

Whether you require flyers, stationery, wire bound booklets or any other type of printing.

You need only pick up the phone and we will be happy to discuss the best and most cost effective way to achieve the results you want.

## **COMPOSING OPERATIONS LTD**

PRE-PRESS • PRINTING • FINISHING • DOCUMENT MANAGEMENT

13 High Street, Pembury, Kent TN2 4PH

T: 01892 823988 • F: 01892 824032 • E: compops@btconnect.com

W: [www.composingoperations.co.uk](http://www.composingoperations.co.uk)





# **WEST KENT**

## **CONSTRUCTION**

### **SERVICES LTD**

**Extensions**

**Conservatories**

**Conversions**

**Patios**

**Refurbishments**

**Landscaping**

**Plumbing & Electrical**



**01892 825500**

**[www.westkentcs.co.uk](http://www.westkentcs.co.uk)**



## PEMBURY ARTS & CRAFTS FAIR

ON FRIDAY 14 May, St Peter's Church put on its second Art and Craft exhibition which lasted until Sunday 16 May. The Preview evening, which was new this year, was a great success. People liked the layout and range of crafts on show, especially the pottery. Also new this year was the involvement of three local schools: Pembury Primary, Skinners' Kent Academy, and Kent College. These as one would expect, were very vibrant and were much admired. Pepenbury, who took part last year were back again, with an even more impressive offering. Their display, which included both pottery and paintings, was very striking and resulted in a number of positive inquiries as to where they could be contacted.



The Arty Crafty Cafe which was open throughout the event was kept busy; with filled rolls and cream teas being the most popular. Over the two and a half days, more than 300 people came through the doors.

**Carole Wakeford**

## SPEEDWATCH – WE NEED YOU

FOR MANY years, there has been an increasing concern that a number of our roads have speeding problems, a concern that I have personally experienced during walks through the village at different times of the day.

Some years ago, Kevin Lynes initiated a grant from KCC to purchase vehicle speed monitoring equipment for Pembury Parish Council.

As previously reported in this magazine, the equipment is extremely easy to use, and very effective in instantly calming traffic, monitoring and recording speeds of all vehicles, and in extreme cases, enables persistent perpetrators to be apprehended by the police.

One of its main advantages is that, over time, it builds up a comprehensive picture of our roads, and identifies areas that do have excessive speeding issues. This information,

in turn, can be passed to the relevant highways departments to back up our claims for more permanent speed calming measures.



To confirm this perception, we, as a village, need to combine our efforts to form a dedicated team of "Speedwatchers", to spare an hour or so a week, to simply set up the equipment in various locations throughout the village and monitor traffic speed.

This information will then be used to make our roads safer for all users.

If you are one of those villagers who are fed up with speeding traffic and want to do something to make our roads safer, please contact the Parish Council Clerk on 823193, and register your name and number, and I will contact you to form the Pembury Speedwatch Group.

**Kevin Edser**

## Steffan Keily

**FOR ALL YOUR FENCING REQUIREMENTS**



All types of fencing supplied and fitted  
Close board, panels, palisade, post & rail, gates

**FREE ESTIMATES FULLY INSURED**  
**HOME: (PEMBURY) 01892-824048 MOBILE: 07941138060**



### Your local choice

**for made-to-measure  
Blinds & Awnings**

Friendly no nonsense service  
tailored to your needs since  
1991.

Call for a quote or to visit  
our showroom in Pembury.  
Free quotes and fitting.



**Tel: 01892 825522**

Email:  
info@penumbrablinds.com  
www.penumbrablinds.com  
Unit 2 Albans Farm, Romford Road,  
Pembury, Tunbridge Wells TN2 4BB

**ACCIDENT  
REPAIR SPECIALISTS.**

**ALL INSURANCE  
WORK UNDERTAKEN**



**ALL MECHANICAL  
WORK AND  
SERVICING.**

**MOTs ARRANGED**

**COME TO THE PEOPLE WHO CARE – FRIENDLY, COURTEOUS SERVICE**

**Tel: 01892 822761**

*Family Owned Business*

**Fax: 01892 824591**

## P.L.H. DECORATING

Interior – Exterior  
Painting & Decorating

**01732 773414**

Mobile 07941 068717

E-mail: plh\_decor@sky.com

## SUMMER FUN AT PEMBURY FUN DAY

OVER 45 Pembury and local area organisations are preparing to provide games, fun, face painting and more along with five superb arena events for the Family Fun Day on 10 July at the Pembury Recreation Ground.

Guides, Scouts, Police, Pepenbury, U3A, Promise-land and Planet Cupcake are just a few of the stalls that will be testing your balance or throwing skills and taxing your brains or reflexes.

From 2pm until 5pm you will be able to sample the food, the fun and the activities. The Pembury Churches Together (the organisers) have decided that entrance is free with any donations or profits being shared between Hospice in the Weald and Pepenbury. We hope to see you there to share in the fun!

If you have any queries or would like a stand, please contact Helen on 825590 or [Helen@pemburybaptistchurch.org](mailto:Helen@pemburybaptistchurch.org).

**Helen Nevison**



## PEMBURY SCHOOL ARE THE CHAMPIONS!

NEW AGE Kurling is a great new sport that can be enjoyed by all children. The 'stones' have three large ball-bearings underneath which allow them to glide across any smooth surface towards the target. This year Pembury School entered three teams from Year 4 in the Tunbridge Wells Festival at Skinners' Kent Academy. Each team was made up of four children and each team played 10 games in their league against other schools in the area. There were 19 teams taking part. The winners of each league then played three rounds to determine the overall champions.

Pembury B team emerged winners of League A and they played St. Mark's A team, the League B winners, in the final. Watched by all the competitors, teachers and parents, the Pembury team kept their nerve and stormed ahead in the first game. The second and third games were close but Pembury were declared the champions by 6-1.

Well done to all the Pembury School teams who tried their best and supported and encouraged each other.

### Minibridge Success

Pembury School Bridge Club recently entered a national competition run by the English Bridge Union, to play set hands of cards against other schools, both primary and secondary and community colleges. 32 pairs entered and four were from Pembury Primary. Our club only began in September, so we were thrilled to have two pairs placed in the top twenty, and two in the top ten. Our highest placing was thanks to Adam Cooper and Will Taylor, who achieved a magnificent 7th.

The English Bridge Union is currently promoting the game of minibridge to be played in primary schools, as it can help with mathematics and social skills. All teaching staff at Pembury have received training in playing this enjoyable and skilful game.

The club may be able to go and play at the House of Lords in the autumn. Watch this space!

**Jane Gardner**





**Friendly professional service for all your foot care needs. Surgery and home visits available. HPC registered. Reduced fees for over 70s at surgery appointments.**

**87 Hastings Road, Pembury TN12 4JS.**

**Surgery: 01892 822855. Mob: 07901922901**

**ALL MAJOR CARDS ACCEPTED.**

**Dawn Hodgson** MSSCh MBChA  
**Chiropodist**

HPC Registered – Home Visits

- Police checked
- Professional Advice and Friendly Care
- Diabetic Assessment and Maintenance
- Verruca Treatment
- Ingrowing Toenail Care



**7 Greenleas, Pembury,  
Kent TN2 4NS**

**Mobile: 07761 583756**

**Tel: 01892 824916**

- Treatment for Fungal Infections
- Day and Evening Appointments available
- Discounts for Over 70's
- HSA 50% Refund Available



**The Old Chapel**  
**Krysia Ritchie BSc (Hons) Ost**

**Babies, children, adults  
and during pregnancy**

**Registered Osteopath**

**Tel: 01892 826 133**

**The Old Chapel | Hastings Road | Pembury | Kent TN2 4JS**

## **Foot Health Care – Home Visiting Service**

- ❖ Nail Trimming ❖ Ingrown Toenail ❖ Athletes Foot ❖ Callus & Corn Removal
- ❖ Verrucae & Wart ❖ Fungal Nail ❖ Reflexology

**CARMEL DUNMALL**

**RGN, RM BSc(Hons), MAR MCFHP MAFHP – Foot Health Practitioner**  
**For a home visit call**

**07969 080860**

## KING WILLIAM RE-BORN

**T**HESE DAYS we hear an awful lot about pubs closing down but it's not often that you hear about one re-opening. So it's particularly good news that the King William IV on Hastings Road has re-opened its doors under new management.

The pub closed down back in August and many feared that it might eventually make way for new development, but it's back with a re-vamped and refreshed look. New tenants Dave Andrews and Lyn Morgan are both from Pembury and are keen to see the place re-established as a village family pub. They're planning to develop the extensive outside space to the rear of the pub into a proper beer garden where families can sit and enjoy themselves. The building



has been re-decorated throughout and is already attracting a lot of custom. By the time you read this article, the kitchens will have been refurbished and Dave and Lyn will be offering a regular menu alongside their special food events that have already included a Beef Roast to celebrate St. George's Day.

The pub is hosting regular quizzes, with all money raised going to the Hospice in the Weald and they also plan to bring live music back to the King Will, though this time the accent will be on acoustic jazz and blues styles.

Pembury is very lucky in that we have four good, community-oriented pubs within the village. It's good to see the King Will back.

**Rick Bayles**

## SNIPPETS

### STRAWBERRY TEA

The Friends of Pembury Parish Church will be holding their annual Strawberry Tea in the Old Church on Sunday 27 June from 2.30-4.30pm.

### MUSICAL PICNIC ON THE GREEN

This year's picnic will be on the Village Green on 19 June. The evening begins at 6pm and there will be music from local bands. Everyone is invited along; admission

is free, although donations will be accepted for charity. Bring a picnic and come and enjoy the atmosphere!

### PRIDE IN PEMBURY

This summer, the Parish Council are once again hosting the Pride in Pembury competition. There is an entry form with this magazine, and the form can also be downloaded from [www.pembury.org](http://www.pembury.org). The deadline for entries is 30 July 2010.

# The national agent with local knowledge.

Get the best of both worlds with **YOUR MOVE.**

Contact your local branch on **01892 825355\***  
or visit our website

**www.your-move.co.uk**



Moving made easier

**YOUR MOVE**

\*Calls may be monitored and/or recorded for training and/or data protection purposes.

## BarnesKingsnorth



Please call in to discuss all your property requirements in a relaxed, friendly environment where we will be pleased to assist you.

16 High Street, Pembury, Kent, TN2 4NY

Telephone: 01892 822880

Fax: 01892 825250

Email: [pembury@bkea.co.uk](mailto:pembury@bkea.co.uk)

ALL VIEWINGS ACCOMPANIED BY PROFESSIONAL SALES PEOPLE  
[www.bkestateagents.com](http://www.bkestateagents.com)



*Other offices at*

TONBRIDGE  
141 High Street  
Tonbridge, Kent TN9 1DH  
Tel: 01732 771616

LETTINGS:  
141 High Street  
Tonbridge, Kent TN9 1DH  
Tel: 01732 771616

## MY PLOT

**T**HERE WAS nothing I could have reported in the last issue because I don't think I stepped foot in the allotments from November until March! I didn't get any of the usual 'putting to bed' jobs done and as a result it was a complete mess when spring finally arrived.

However, things are now looking fine and, surprisingly, I didn't lose anything to the prolonged cold. In fact, coincidence possibly, I got a very early and heavy crop of Asparagus, which was good.

One survival surprise was Fennel. The ones that went to seed last summer have re-sprouted in quite a cluster. This could be a very profitable accident if I get two or three 'bulbs' instead of one.

I have tried growing Autumn Onion sets for the second time but they are looking as though they are simply going to flower. This happened last time I gave them a go (in 2007) and when they flowered that time I blamed a really hot April; they don't have that excuse this year!

For the first time, I grew Calabrese rather than Broccoli. It seemed like a good idea to grow the stuff I would normally buy (I think the major difference is the large flower head, rather than loads of smaller ones? I'm happy to be corrected here). Anyway, the large first flower was all well and good, but that was it! Crop over; an entire row for six months which did two meals max. I won't bother with that again!

**Caroline Mazze**



## THE PEMBURY SOCIETY

**I**N A WELL-FILLED village hall, the Pembury Society held its Spring Meeting. The speaker was Roger Smith from the Village Sign Society. He gave an illustrated talk on the history of village signs in Kent.

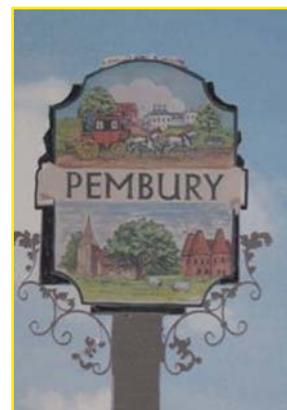
There are over 170 village signs in Kent, all of them very different. Some are made from wood, some of wrought iron and others from acrylic. Many of the signs are recent additions to the villages. He showed a varied selection including the Bo-Peep sign in Pembury. He left a blank space for the proposed new sign on the Green for Pembury.

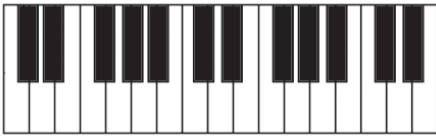
Roger's talk was followed by a presentation by Les Cook, the vice-chairman of the Pembury Society, on the proposed new ornamental sign for Pembury. The plan is to erect the sign on the lower end of the Village Green so that it can be seen from all directions. The sign will be a coloured one, painted on both sides. Made in acrylic, the hope is that it will last for many years.

The cost of the sign is in the region of £4,500, of which £1,500 has already been donated by Kent County Council. The rest will be financed by the Society themselves from existing funds and by donations from members of the society, local businesses and villagers.

The hope is to have the sign on the Village Green by September. If you would like to contribute, please ring our chairman, Ken Watts, on 822770.

**Barbara Ballantine**





## Piano Lessons Theory of Music lessons

**Catherine S Brown** LRAM PGCE

*Member of The Incorporated Society  
of Musicians*

- Highly qualified and experienced teacher
- Beginner to grade 8 offered
- Outstanding success rate with public examinations

Contact:  
01892 826005 or  
csb.music@live.co.uk



**Seldaw**

Domestic Cleaning

**'Green' cleaning at its best!**

- Natural Eco friendly plant products used
- Tunbridge Wells and surrounding area
- Weekly - fortnightly - monthly
- Spring clean - builders clean
- All equipment provided
- Competitively priced

Call us today for a quotation on

**01580 752885**

or alternatively

**07961 972902**



[www.seldaw.co.uk](http://www.seldaw.co.uk)

**BLADErunners**

Amber and Rachael offer.  
A discount of 20% on  
cut, colour and perms  
until 31st of July.

43 Hastings Road  
Pembury  
Kent  
TN2 4PB

Tel. 01892 824420

[www.bladerunnerspembury.co.uk](http://www.bladerunnerspembury.co.uk)

Thalgo Body Treatments  
Thalgo Facial Treatments  
Hands & Feet with Nailtiques  
Make-up  
Beauty Treatments  
Spa Days

**Lucy's**  
BEAUTY STUDIO  
HEALTH & BEAUTY

**Lucy Pilfold** B.A.B.T.A.C. qualified therapist  
Ramada Jarvis Hotel, 8 Tonbridge Road,  
Pembury, Kent TN2 4QL  
[www.lucysbeautystudio.co.uk](http://www.lucysbeautystudio.co.uk)  
**01892 820444**  
**free parking**

## KENT COLLEGE

### Young Fashion Designer Competition 2010 and KCRunway10

Kent College's reputation for its innovative and exciting bi-annual Catwalk productions will be put to the test this year, with the launch of the Young Designer Competition open to Textiles students in the South East studying GCSE and A level Textiles or Product Design.

KCRunway10 was held at the Judi Dench Theatre, Kent College, at the beginning of May, with students modelling work created by Year 7, through to individual and innovative A level products designed and made by Year 13.

The Young Designer Competition was instigated by Kent College's Head of Textiles, Mrs Karen Wintle, and is currently being offered as a pilot scheme throughout the South East. It is hoped that with possible future sponsorship and recognition, it will become a nationwide annual event, offering valuable encouragement to fashion students in the 15–19 age group. By creating this competition, the college aims to showcase the talent and potential of young designers around the region.

The Young Fashion Designer Competition requires students to send evidence of portfolio design work. Selected finalists are invited to attend the competition final on Saturday 19 June where they will be interviewed by a panel of experienced judges from educational and fashion backgrounds. Prizes will be awarded for each level at GCSE, AS and A2 and students saw prize winning entries featured in a showcase display in Hoopers department store in Tunbridge Wells at the end of May.

**Emma Chandler**



## TUNBRIDGE WELLS 10K RUN AND 1K FUN RUN

**T**HIS TAKES place on Sunday 19 September, 10am. It starts and finishes at the Lower Cricket Ground, Tunbridge Wells. It is a challenging but very scenic course with a new, faster, flatter route for 2010!

While the 10km run is taking place, families and children have a chance to run 1km, with each person completing the race being awarded

a medal. As all event costs have been covered through sponsorship, all money raised will go to the Hospice in the Weald. Bryony Shaw, Olympic bronze medallist, will start the runners off and give out medals at the finish line. For entry forms call 820508 or enter online at [www.runnersworld.co.uk](http://www.runnersworld.co.uk).

**Ruth Fahie**

## EASTER FUN DAY

**R**AINBOWS, BROWNIES and Guides in Pembury had the chance to celebrate Easter and have lots of fun, at their Easter Fun Day on Saturday 27 March. Over 70 girls and 12 Guiders met at the Guide & Scout Headquarters for a day of craft, fun and chocolate.

We decorated eggs, rolled eggs, made chocolate nests, hunted for eggs, judged decorated eggs, ate chocolate and made Easter chicks. In between all this we had lots of fun and there was lots of laughter.

Many thanks to all the Guiders for their hard work.

**Moirá Allan**, District Commissioner



## PEMBURY VILLAGE HALL

### AVAILABLE FOR HIRE

**Facilities include Main Hall, Meeting Room, Stage, Kitchen, Changing Rooms and Services.**

**Ideal for Club Meetings, Weddings, Anniversaries, Corporate Functions, Shows, Dances, Musical Events, etc.**

**CONTACT BOOKINGS MANAGER –  
RACHEL WINDUS ON 822837**



## Alexander Benjamin

*Garden design and landscaping specialist*

All garden maintenance and landscaping work undertaken, including lawnmowing, weeding, hedgecutting, pruning, turf laying and planting. Also paving, brickwork, stonework, timberwork and water features. Landscape Design. Friendly and reliable service.

**Contact Alex Walsh:**

**Mob: 07794 070261 • Home: 01959 577684**

## West Kent Shooting School



Practice facilities in:  
English Sporting and English Skeet

**New Hay Farm, Old Hay  
(off Pearsons Green Road)  
Paddock Wood, Kent TN12 7DG**

Accessory and Clothing Shop, Cartridge Shop  
and Webshop: [www.wksswebshop.co.uk](http://www.wksswebshop.co.uk)

Tel: 01892 834306 [info@wkss.demon.co.uk](mailto:info@wkss.demon.co.uk)  
[www.wkss.demon.co.uk](http://www.wkss.demon.co.uk)

- 100ft High Tower!
- Gun fitting, Lessons for Novices and Experts by appointment
- Corporate Days / Gift Vouchers

Open  
Monday to  
Friday from  
10am to 5pm

## G-Tech Computers

*Home and Home Office PC Support*



**Contact Details:**  
Pembury - 01892 823994  
Mobile - 07929 903126  
[info@gtechpcsupport.co.uk](mailto:info@gtechpcsupport.co.uk)

*Home Visits or Free Collection & Delivery  
Full Support Services for the Home & Home Office User  
No Fix - No Fee & No Call out Charge  
Virus Detection, Removal & Prevention  
Upgrades to your Existing PC  
Broadband & Wireless Network Installation  
New PC System Sales  
Servicing and Preventive Maintenance*

## A GEM OF A MARKET

**T**UESDAY MORNINGS in Pembury are so wonderful; the Village Market in the Village Hall is open from 9am to 11.30am and is the real highlight of my week. It's a pleasure to meet and greet old friends and sit and have a coffee.

There is an abundance of fresh fruit, vegetables, groceries, fresh hen and duck eggs, mouth-watering home-baked pies, cakes and pastries, along with local jams and chutneys to go with the fresh bread on sale. This is really a one-stop experience, as you can order and buy the most beautiful jewellery, handcrafted greeting cards, and lovely hand-knitted items. If your reading material is running low, there are plenty of books for sale.

What is so generously given is the time for the stalls supporting charities; Pepenbury, Air Ambulance, Diabetes, Pembury Football Club and St. Peters Church; where else would you find such dedication? At the Market you are welcomed from the moment you enter the doors. It's a really good social atmosphere; all of the stall holders are very friendly and helpful.

Tom, the Community Warden, is there every week for a chat to if you have concerns. A Town and Country Housing Association representative is also often in attendance. Myself and my colleague, Mike Tompsett, part of your Borough Councillors team, are there at least twice a month, more if needed, should you wish to share concerns with us.

There have been rumours that the Village Market was closing, DEFINITELY NOT!! It's warm, welcoming and vibrant and everything is a bargain! Please take the time to come and browse. You will, as I did, find it's a real hub of our community, and worth that extra effort to explore the stalls.

For information or to book a stall, please contact Karol Young on 823413 or Jean Tyler on 01732 357820.

**June Crowhurst**

## WHATEVER HAPPENED TO EASTER BONNETS?

**W**ELL THEY were in abundance at the Pembury Baptist Church Day Centre on 30 March. We had the privilege of the Mayor of Tunbridge Wells, Leonard Price, judging the bonnets and the winner was Doreen Tomkins, who lives in the village. The Mayor also spent time talking to the members of the Day Centre and he thoroughly enjoyed a two-course freshly cooked lunch with us. He also



brought along his driver, Jerry, and I did ask him if he was free anytime to drive for us – I am sure our members would have loved being picked up in the Mayoral car!! Unfortunately, he had to decline.

If anyone is interested in joining us, we meet on Tuesdays during term time and have a keep-fit lady who comes each week. We regularly have quizzes, speakers, a Bring & Buy stall once a month and much more. We offer lifts if you are unable to come under your own steam. Although it is primarily an over 60's club we do welcome those who may be not quite this age but would enjoy the company and activities. Please contact Rosie Bass on 822059 for more information.

**Rosie Bass**

## PEMBURY TENNIS CLUB

**P**EMBURY TENNIS Club is a small, friendly club situated in the Recreation Ground, Lower Green Road. We play on Wednesday and Friday evenings from 6pm during the summer and Sunday mornings from 10.30am all year round. We play mainly mixed doubles and provide the tennis balls. We are always pleased to welcome new members, so dust off your racket and come and join us. If you are interested or need any further information, please contact Kim Phipps on 824224 or Sheila Smith on 822405. We hope to see some new faces this season.

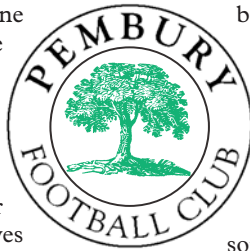
**Sheila Smith**



## PEMBURY SENIOR FOOTBALL CLUB

**I** THINK PLAYERS, officials and supporters alike will agree that this has been a very tough season. Local football is going through a very difficult time with a shortage of fully committed players to cover the numerous clubs in the area. Although we consider ourselves one of the stronger clubs we too are suffering like everyone else.

On a Saturday, our first team have struggled around the foot of the table in the Kent County League Division Two whilst our reserves have equipped themselves reasonably well in Division One of the Tonbridge League. We have, though, been hampered by player availability to the extent that we have often struggled to field two full elevens. This is clearly not conducive to success. In order to try and address this we have, for next season, withdrawn our team from the Kent County League, gone back to our roots and applied to put both our sides in the Tonbridge League. We hope that the reduction in travel time will re-ignite some enthusiasm, that we may attract some new players and this will hopefully take the club forward again on the playing front.



Sundays have been a similar story; we started the season in Divisions One and Two of the West Kent Sunday League and it wasn't long before player availability meant that we had to withdraw our reserve side. Again a real shame as the club had been one of the leading lights in this league over the previous seasons, having been champions twice and senior cup winners. This year we will finish in the bottom half of Division One but our performances certainly picked up towards the end of the season as some of our younger members began to find their feet at this level. Next season we are looking to re-establish the reserves but will need to be certain of availability and commitment before we do so.

So a plea – all prospective new players come and join us - Pembury F.C. has over 100 years of tradition, we run our club the right way and have a good social ethos. We are committed to welcoming new players – all we ask is that, in signing, you are committed to playing football. We await your call and hopefully will see you when we begin training in the summer.

**Andrew Rice-Tucker**, Chairman

## LITTER-PICK-A-MILE

**A**S PART OF Sport Relief, the Tunbridge Wells KCC Wardens are doing a litter-pick-a-mile in 15 villages and urban areas across Kent. The litter-pick in Pembury happened at the end of March. Tom Younger, Gary Simpson (Sherwood Warden) and Charlene Grundy (Support Warden) picked litter from a mile of roads and alleyways in Pembury. They collected three dustbin bags full of rubbish plus a battered plastic box and a car bumper! They also discovered asbestos roofing sheets dumped in an alleyway and have informed the Borough Council. Their sponsorship has gone to Sport Relief, the money being used to help people living incredibly tough lives both in the UK and in the world's poorest countries.

**Nigel Freeman**



## WATERFIELD HOUSE SURGERY

**S**PRING HAS arrived, the blossom is bursting and I can hear the shouts of joy from antihistamine manufacturers who have endured a barren winter, simply waiting for the hay fever to erupt again. For those who suffer, we can prescribe a month's supply of antihistamines on the NHS to try to control the symptoms.

At Waterfield House, spring is that time of year when we are assessed regarding the quality of the "holistic care" provided throughout the year to our patients, and it is very satisfying to see the surgery achieve in the region of 93% total. Thank you to everyone who contributes to that success, especially the patients who are willing to have blood and other bodily fluids checked, blood pressures recorded, electrocardiograms plotted and endless questions asked whilst filling out forms.

We have also become a training practice for junior doctors who, as part of their foundation studies, come out from the security of the hospital to see what medicine is like in the real world. They are very enthusiastic but I fear it is clear evidence of my age that these new doctors look so young! I know about policemen looking younger but I wasn't prepared for the same with doctors. I also thank all those who have been happy to see the young doctors. Although new to general practice, they have all remarked how welcoming Pembury has been.

We have been delighted with the response for ideas for the redecoration of the waiting room and expect to see progress over the summer. I am still open to Banksy creating a unique mural so if anyone has contacts, please feel free to drop a hint in the right direction.

Lastly a few words about the second-hand book stall in reception. What a wonderful contribution this has made and several hundred pounds have been raised to purchase extra equipment; the pulse oximetry devices that measure arterial oxygen levels were one such acquisition. Thank you to all those who buy, read and donate the books.

May I wish you all a wonderful summer and I look forward to seeing some of you over the coming months with bee-stings, mosquito bites, sun-burn and everything else the fine weather promises.

**Dr Andrew Cameron**



Pembury, Kent

# **personal touch** computers

[www.pt-c.co.uk](http://www.pt-c.co.uk)

networking

security

reinstallation

upgrades

PC/server builds

repairs

-  **Home and business IT**  
Up front costs, no unexpected hourly fees
-  **Laptops/custom PCs**  
Wireless / ADSL / CABLE installs, helpful advice
-  **Callouts available**  
Business hours / evenings and weekends

Aaron Taylor 07545 996 410  
email – [aaron@pt-c.co.uk](mailto:aaron@pt-c.co.uk)



# **Broadfeed** LTD

*Feeding All Creatures Great And Small*

**Animal & pet feeds, saddlery, clothing, accessories, bedding and much more.**

- Free & Easy Parking • Helpful Staff • Friendly Advice • Delivery Service

**6-7 Spa Industrial Park, Longfield Road,  
Tunbridge Wells, Kent. (Opposite Kwik Fit).**

**Tel: 01892 532619**

**[www.broadfeed.co.uk](http://www.broadfeed.co.uk)**

**Open 8.00 – 5.30 Monday to Friday, 8.30 – 4.00 Saturdays**

# Pembury Parish Council presents

# **Pride in Pembury**

*annual garden and photographic competition*

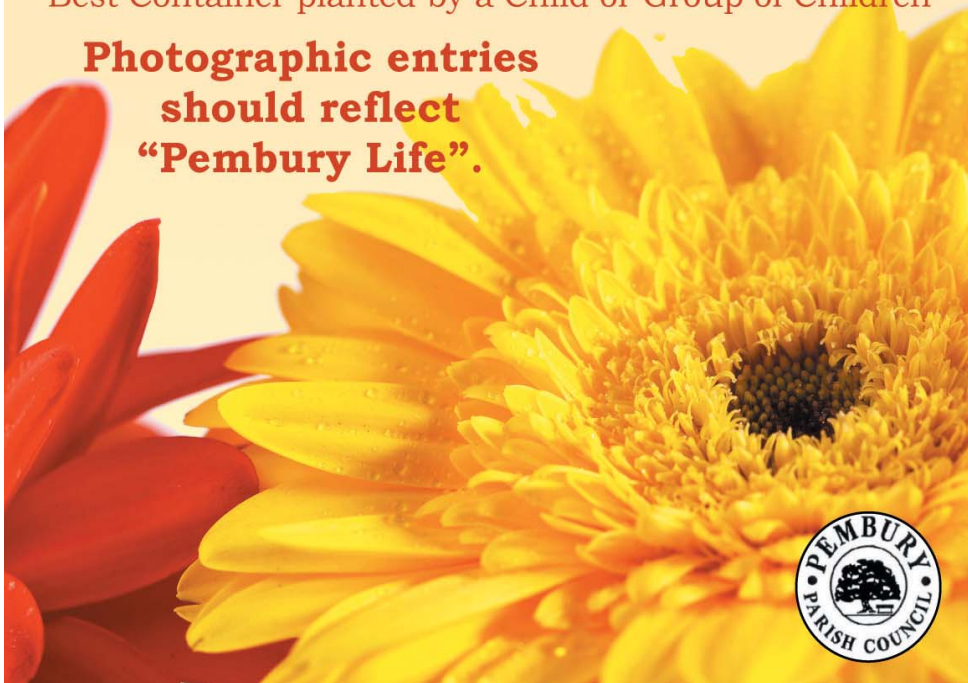
**Enter by July 30th 2010 and you could win  
one of the coveted cups and an invitation to  
the winners' tea at the Pavilion.**

*And, the top three entries for the photograph competition will have  
their photograph on display in the village for a whole year.*

## **Horticultural Categories:**

Best Front Garden - Best Hanging Basket or Container  
Best Commercial Frontage - Best Allotment  
Best Container planted by a Child or Group of Children

**Photographic entries  
should reflect  
"Pembury Life".**



## PEMBURY PEOPLE

**BARBARA RUSSELL (née Giles),  
Clerk to the Parish Council**

*You have lived here all your life, haven't you?*

Well yes, I was born and brought up here and went to the local primary school, but there was a period when I moved away when I first got married. We went to Canterbury where we ran a pub for a while, but once the children arrived we decided it wasn't really the right environment for small children and we moved back to The Grove in Pembury, where I've lived ever since. My Dad came from Pembury and my brother still lives here, but my sister's in East Peckham and my Mum came from as far away as Tunbridge Wells!

*What was Pembury like when you were growing up?*

Well it was the sort of place where everyone knew everyone else, but this changed in the 60s as Pembury expanded with the estates and commuters, which turned it into a bit of a dormitory village. In those days the main employers were the brickworks and the hospital – where my uncle was actually head gardener. But there are still lots of people I went to school with here and I could certainly tell you a few stories if this wasn't going to be published!

*What inspired you to become a parish clerk?*

Well it was the ideal job for me with young children as it was part-time. I've now been clerk to the parish for 20 years and the job has evolved enormously, mainly because local government has changed so much. What is nice is that younger people are becoming councillors – it used to be mainly retired people with time on their hands and it was really more reactive than proactive. I think the profile of being a councillor has improved recently because the council has become so proactive that people want to get involved in the exciting projects going on like the restoration of the Recreational Ground or the Old Coach Road. Also, things like the Musical Picnic and the Fireworks have definitely upped the profile of the council.



*You're also involved in different kinds of missionary work?*

Yes, I've been to Mozambique three times where I worked in an orphanage in Maputo. We played and worked with the children and visited the rubbish dump where the homeless lived. It was a life changing experience to see such abject poverty – where people had to live off vegetable peelings to survive. Honestly, we moan about our potholes, but you should see theirs! And there's no rubbish collection and it's all so corrupt. At first you feel so guilty, but then you realise that life isn't fair, but if you can make even a small difference, it's worth doing.

*What about your work as a street pastor in Tunbridge Wells?*

That's so rewarding because people really appreciate us being there. We're not out to evangelise, just to try to make the town safer on a Friday night. We start at 8pm and work through until about four in the morning, visiting the pubs and clubs where young people go. The idea is not to get involved in problems but to try and diffuse any awkward situations and prevent them from escalating. We carry space blankets and first aid kits and a lot of it is just looking out for the youngsters, especially girls on their own. We also hand out flip-flops for girls who can no longer walk in their heels! They have [www.streetpastors.com](http://www.streetpastors.com) printed on them and are now selling like hot cakes on eBay I hear!

**Mel Karpinski**

## PEMBURY CRICKET CLUB

AS THE 2010 season continues, the sound of leather on willow can still be heard from Chalket Lane. With both our 1st XI and 2nd XI Saturday sides changing leagues this year, many new visitors have been welcomed to our clubhouse and our Sunday XI continues to see teams returning year on year for a few friendly overs.

Our junior section is flourishing, all our junior sides are now well into their Mid Kent Youth League games.

The club's thriving social events continue throughout the summer with BBQs, 6-a-side and a Family Fun Day all planned, and of course the club bar always welcomes new faces.

If you'd like to be involved in your local cricket club, come along to the ground in Chalket Lane any afternoon, any weekend or give me a call on 834166.

**Sandy Crouch**

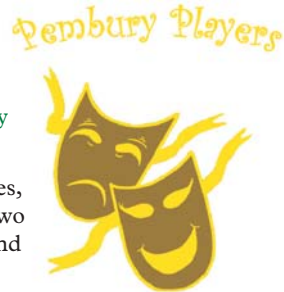


## PEMBURY PLAYERS . . .

**. . . present two short summer plays -**

*'Jump Off'* by John Waterhouse and *'The End of the Beginning'* by Sean O'Casey

After a couple of years with their focus mainly on winter pantomimes, Pembury Players are getting back to what they do best, presenting two very different, but equally fascinating, comedy plays on Friday 18 and Saturday 19 June at the Village Hall.



*'Jump Off'*, directed by Tony Turner, was successfully performed here several years ago. It provides another opportunity for one of our teenage stars, Catriona Allen, to shine as the bewildered young Pauline perched in a precarious position on a ledge at the top of a tall building, in the unwelcome company of Aubrey, played by Andrew Hawker. It's guaranteed to keep the audience on the edge of their seats as Pauline threatens to leap off. Will she or won't she? Come along and find out.

*'The End of the Beginning'* by contrast, directed by John Hawker, is a whole new experience for us. Set in the mid 20th Century in rural Ireland, it has a charming and timeless script and features Chris Tampsett and Martin Sully as two quirky characters, Darry and Barry, who bite off much more than they can chew when they swap their normal outdoor work for Lizzie's household chores. The play, which also features Hilary Smith, builds to an unpredictable climax with plenty of zany action on the way.

Players' Chairman, Chris Tampsett, says: 'I am delighted that we have recruited enough experienced actors this year to present a full evening's summer entertainment. I do hope Pembury residents will take the opportunity to support this venture as we have worked very hard on all aspects of the performance including two splendid sets to make it a really good show.'

The dates for the show at Pembury Village Hall are: Friday 18 and Saturday 19 June at 8pm. There will be a licensed bar. Tickets priced at £7 (£5 for children/OAPs) can be bought on the door or in advance from the Post Office or the Chemists.

**James Whitehorn**, Secretary



## PEMBURY PAVILION

**NOW AVAILABLE FOR HIRE**

Brand New Facilities in the Recreation Ground  
Suitable for Children's Parties, Social Groups, Sports Events, Meeting and more . . .

For further information contact  
Colin Forward on 825436 or [colin.forward@comms-factory.com](mailto:colin.forward@comms-factory.com)

## *Heritage New Drives*

*Block Paving Specialists*

**[www.heritagewdrives.co.uk](http://www.heritagewdrives.co.uk)**

Tel: 01892 723849 Mobile: 07785 112583

*Thinking of a new drive?*

*Free Estimates – Give us a call*

*Paydon, Petteridge Lane, Matfield, Tonbridge, Kent TN12 7LX*

## PEMBURY DENTAL SURGERY



**Nelis du Plessis B.Ch.D. (Pret)**

67 Hastings Road, Pembury, Tunbridge Wells, Kent TN2 4JS

Tel: (01892) 823044

**Committed to Quality Dentistry**

When you get to a certain age you've earned the right to: have an afternoon nap, listen to The Archers, have someone else do the housework, get taken out shopping or simply enjoy staying at home... And they say it's a dog's life.

TerraBlu provides domiciliary support in Pembury and Tunbridge Wells. The company has an 'excellent' rating from CSCI (Commission for Social Care Inspection) and provides services to Private, Social Service and Kent Card clients.

Call: 01892 529429 or email: [Julia.Mead@terraflu.co.uk](mailto:Julia.Mead@terraflu.co.uk)



**Taking care...**

[www.terraflu.co.uk](http://www.terraflu.co.uk)



## PEMBURY VILLAGE QUIZ

**T**HE VILLAGE quiz, held on 21 May in the Village Hall and organised by Pembury Scouts and Guides, was a great success. Quiz master Keith Merrin kept the questions rolling as 22 teams battled for the top spot. The quiz was open to all organisations within the village.

Question rounds were interspersed with quick rounds, a long round about the London Underground, and a raffle. A licensed bar was provided throughout the evening too.

The winning team from the Black Horse received the Quiz cup, and donated their winnings to the Hospice in the Weald.

Congratulations and thanks to all those who came along to take part, and to those who gave their time for compiling the quiz, running the bar, and making the evening run so smoothly. We all look forward to next year's event!

**Editor**



## PEMBURY WOMEN'S INSTITUTE CELEBRATES 90 YEARS

**T**HE WI IN Pembury was started on 29 March 1920 and there has been a WI here ever since. During the war years they were busy with projects such as collecting eggs and making linen for the county hospital in Pembury. After the war they helped with the prisoners of war and even made 784 jars of jam for them one year!

After that time in 1965 they celebrated the Golden Jubilee of the National Federation and erected the 'Pembury' sign on the village green. Later that year the WI was split and a new 'Pembury Evening WI' was formed and the original Pembury WI became known as 'Pembury Afternoon WI'. They have a varied programme of activities and currently are discussing the labelling of food.



In 2010 they reached their 90th birthday and so, on 1 April, at the monthly meeting they had a 'fish & chips' lunch and celebrated with a special birthday cake and a cup of tea.

On Saturday 10 April the WI had a special big celebration of

both WIs with a display of scrapbooks, record books and craft items from past years. The afternoon was formally opened by Mrs Chris Klempau, the Chairman of the West Kent Federation, and members from other WIs were invited along. The event was well supported by members of the village and Pembury Parish Council Chairman, Mrs June Crowhurst, also came, as well as guests from Capel, Paddock Wood, Matfield and Horsmonden. We were lucky to have Mr Robin Kenworthy present whose mother was secretary and President in the 1950s and he brought some of his mother's memorabilia with him. We sold craft items and cakes on the day and ran a raffle with gifts donated by businesses in the village, and offered a cup of tea to all those who came. It was a great celebration which was enjoyed by everyone. In ten more years it will be our centenary!

**Janet Ditchett**, President – Pembury Afternoon WI

## **FREE ESTIMATES**

● **EXTENSIONS** ● **HOME IMPROVEMENTS** ● **DECORATING**

*Contact*

**Alan Clarke of**

# **CWC BUILDERS LTD**

**13 High Street, Pembury TN2 4PH**

**Tel: 01892 823932**

**E-mail: cwcbuilders@aol.com**

**Company Reg. No. 6392201**



# **G. F. GROVES Ltd**

**CARPENTERS, JOINERS & BUILDING CONTRACTORS  
EST. 1979**

**ALL ASPECTS OF GENERAL BUILDING  
EXTENSIONS  
LOFT CONVERSIONS  
RENOVATIONS**

**Tel: 01892 724424  
Mob: 07774 742747**

## PEMBURY'S OWN VICTORIA CROSS HOLDER

### Part 2

**I**N HIS REMINISCENCES, Major General Dixon writes: "we purchased a little property near Tunbridge Wells at Pembury, recommended to me by a brother officer Major Sempriere."

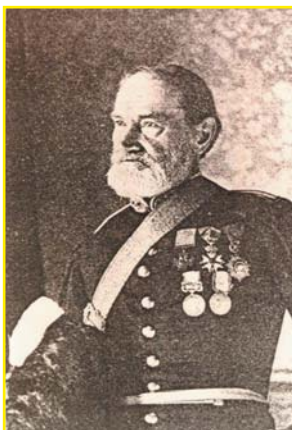
The "little" house was Woodsgate, which stood on the edge of Pembury, where the Texaco Garage is now. The house had been an Inn in 1785 on the road from London to Rye and Hastings. General and Mrs Dixon lived there with their nephews and nieces, the Bosanquets, and they all took a very active part in village life. Village fetes were held at Woodsgate and an archery club practised in the grounds.

Charles Gower was his gardener for many years and described the Dixons as ideal employers. They were sincere and devout Christians, caring for all who worked for them. On Sunday Mrs Dixon ran a bible class for the local lads - some of them of a very young age. She seems to have been a kindly lady.

The General became frail and doddery. Each day Charles would walk with him around his small domain. The old man would ask: "Chickens laying well, Gower?", "Cow milking well, Gower?", "Pigs well, Gower?" To each question Charles would answer resoundingly "Yes, General" regardless of what the situation really was.

Charles and his family occupied accommodation over the stable block at Woodsgate. After his first wife died and he remarried, Mrs Dixon promised him and Emily a new cottage to be built in the grounds for his growing family of five sons.

The 1901 census showed Amelia Bosanquet, 65, sister-in-law and Charles Bosanquet, 35, nephew living with the Dixons.



Major General Dixon died on 7 January 1905, aged 84, at home. Cause of death was listed as "senile decay, valvular heart disease and influenza". As a mark of respect to the many friends he had made in the village, the first part of the funeral service was held in St. Peter's Church in the morning of 12 January. The service was taken by his nephews and the Rev H. S. Brooke, Vicar of Pembury. Afterwards the remains were conveyed to Kensal Green Cemetery, London, for burial in the family grave at 2pm.

His obituary in the *Kent and Sussex Courier* stated: "Profound regret is felt in Pembury at the passing away of the gallant soldier, who had been an esteemed resident of the village for upwards of 30 years. The village will miss a valued and honoured resident, whose sympathies were ever practical, although of late years increasing infirmity had impaired his once splendid mental and physical powers."

Mrs Dixon stayed at Woodsgate until 1922 when she moved to 8 Calverley Terrace, Tunbridge Wells with Charles Bosanquet. She remained here until her death, aged 93, on 3 September 1926. She was buried alongside her husband.

Woodsgate became a country club and restaurant in the 1940s and 1950s before being demolished in March 1960. This made way for the Woodsgate Way housing estate, and an extension to the Woodsgate Garage.

Dixon's medals are still in the possession of a distant relative. He is remembered on a brass plaque in St. Peter's Church and with the other nine V.C. Holders of the Borough at the Victoria Cross Grove, Dunorlan Park, Tunbridge Wells.

**Richard Snow**



# APEX ACCOUNTANCY

**Chartered Certified Accountants**

We are a small firm of accountants looking to meet your needs with our focus on you, the client.

WE ARE CLEAR ABOUT OUR CHARGES WHICH USE A COMPETITIVE FIXED FEE TARIFF, AVAILABLE ON OUR WEBSITE OR BY CONTACTING US ON THE NUMBER BELOW.

10% DISCOUNT IF YOU MENTION PEMBURY VILLAGE NEWS WHEN CALLING – ASK FOR SCOTT.

#### Business Accountancy

Bookkeeping & VAT  
Business Tax  
Payroll & CIS  
Company Formations and Business Start Ups  
Company Secretarial

#### Taxation

Personal tax  
Tax planning  
HMRC Investigations

#### Value Added Services

Through our partners we may also be able to offer leading edge tax planning strategies.

We also offer a free no obligation 30 minute meeting.

**Telephone 01892 800900 / 01892 835738**

**[www.apexaccountancy.co.uk](http://www.apexaccountancy.co.uk)**

**Orchard Business Centre, Badsell Road, Five Oak Green TN12 6QU**

# Barsleys

**The Department Store**



A family business founded  
in Brenchley in 1891.  
Over a century of personal service.



## The Department Store in Paddock Wood

Carpets • Flooring • Beds  
Furniture • Curtains  
Blinds • Tracks & Poles  
Free Local Estimates & Delivery  
Fitting Services Available  
Fabrics • Bedwear • Linens  
Duvets • Pillows • Towels  
• Schoolwear  
• Scout and Guide Uniforms  
• Clothing & Footwear  
for all the family  
• Coffee Shop

***"Why go  
anywhere else?"***

### Barsleys Department Store

**16-22 Commercial Road, Paddock Wood Tel: 01892 833464**

**email: [mail@barsleys.co.uk](mailto:mail@barsleys.co.uk) [www.barsleys.co.uk](http://www.barsleys.co.uk)**

## PEMBURY SCHOOL ASSOCIATION

**L**AST TERM, the PSA ran a 'Kids on the Catwalk' fashion show. It was a tremendous success: the children had the opportunity to strut their stuff on the catwalk, and everyone had a great evening. We also had a disco, always a favourite with the children, and the two events raised a good amount of money for the school. The PSA have bought the school a new overhead projector multi-media system for the school hall, which all of the children will benefit from in many ways. We have also pledged £2,500 towards a new server for the school's ICT suite; another purchase which will give huge benefits to everyone at the school.

Plans for the PSA Summer Fair are well underway. This year, on Saturday 3 July from 12-2pm, we are holding a World Cup Themed Balloon Race. Tickets will be sold beforehand and on the day. The tickets are attached to balloons which will be released on the day, and the people whose balloons travel the furthest will win prizes. For anyone who may have concerns, please be assured that the balloons and tickets are biodegradable, and no string or plastic will be used. The timings have been set so that we don't clash with any crucial football matches, and we would encourage everybody in Pembury to come along on the day to support the school and watch what we hope will be a spectacular sight as two thousand balloons are released into the air.

**Frances Armstrong**



## NEIGHBOURHOOD WATCH IN PEMBURY

**I** HAVE JUST been reading an old copy of PVN from 1997 and it's interesting because of an article on Neighbourhood Watch. The Scheme has been running for nearly 20 years in Pembury but I don't think many people really understand what it is about. Simply put, it's neighbours watching out for neighbours.

Arranged into areas, each with a co-ordinator, we keep an eye open for anything unusual to help keep our homes safe. We report anything out of character and any suspicious people lurking around. On the ground, it's making sure your neighbour knows when you are at home, when you are away and where you are on holiday just in case the unexpected happens.

When we started in Pembury, most of the roads were covered by the scheme, but over the years people have retired, moved away, or given up and we need to boost the scheme to keep the crime level at a minimum and let people know they are safe when they live in Pembury.

The scheme is looked after by a member of the Police force who is keen to reassess the scheme locally. We have a very active Police Community Support Officer, Nick Brown, but he covers several villages and cannot be around all the time, although you can often contact him on a Tuesday morning in the village hall along with our KCC Community Warden, Tom Younger. You may receive a letter asking if you support the scheme, please answer the questionnaire. I hope we get sufficient interest to call a meeting in the village to explain how the scheme works. Pembury is a great place to live, please keep it safe for all, young and old alike.

**Janet Ditchett**, Liaison for Pembury in Tunbridge Wells district

## GREEN GARDENING – FASCINATING WASPS

**T**RADITIONALLY, WASPS are seen as a nuisance at best or as a fierce buzzing pest on a mission to inflict painful stings on anyone and everyone. Well, unless you have an allergy, and the vast majority of us don't, those stings aren't that bad. And as for wasps, they are truly fascinating creatures with a complex social life – and they're a great form of natural pest control. So don't be too quick to judge them.

Most wasp species in the UK look very much alike and it requires a trained eye to tell them apart. The two kinds we are most likely to come into contact with are *Vespula vulgaris*, the common wasp and *Vespula germanica*. Both construct complex nest structures out of chewed wood mixed with saliva and other materials. Common wasps build their nests underground, while their German cousins prefer elevated locations such as roofs, tree branches or sheds. Those lucky queen-wasps that survive winter hibernation – and not many do – start looking for suitable nest sites in late April to May. At this stage if you'd rather not have them nearby, like in your shed or attic, simply place moth balls to pass on the message (advice given by a specialist entomologist, although moth balls are now hard to source since being declared unhealthy). Where wasps nests are concerned, prevention is the key. Queens will not move after they choose a site. Destroying an active nest is a messy and hazardous business with health threats to pets and aquatic life. Besides it only gives temporary relief. Wasps soon come back and re-colonise a good site. When the queen is finished building her HQ, she lays eggs that produce female workers that will care for all following generations until the end of summer. Although adult wasps are largely vegetarian, young grubs are carnivorous and require a high protein diet. That's where wasps become gardeners' friends, hunting thousands of aphids, caterpillars and other pesky beasts. Last year we were lucky to have a wasp nest in roof tiles nearby (although my neighbours may disagree). These wasps completely cleared my fruit trees & roses of aphids within a short while, enjoying a few overripe fruit in exchange. I certainly did not mind – it was fair payment for their hard labour.



As soon as the female workers pupate, the queen can devote all her time to egg laying. She lays up to 30,000 in a summer, although not more than 5,000 are present in a colony at any one time. Wasps, as any other creatures, have their predators. Although not much will go for an adult, grubs succumb to a parasitic beetle that lays its eggs inside them. Nature does have its means of population control after all, so no need for nasty pesticides.

Wasps pose no health threat if they land on your food. They are remarkably fastidious, and clean the nest cells daily, as these are reusable structures. They also 'employ' grubs of a particular fly that live in the nest and feed off waste.

There is strong evidence, and also my personal experience, that they do accept neighbours, such as us and our pets as long as we don't threaten them, and calmly ignore your presence. We had a nest in the roof tiles in London, right above our door to the roof terrace. All summer we were out there, and neither us nor our guests were stung. The wasps simply went about their business, completely ignoring all of us.

So next time you see a buzzing beast, pause for thought. Despite their reputations, wasps do more good than harm.

**Masha Odintsova-Bayles**

## PEMBURY HOSPICE SHOP

**T**UCKED AWAY in a corner of the High Street is a small shop that is very much a focal point of our village, and a continuing success at raising much needed finance for our Hospice. When I retired from my profession in 1996, I felt I wanted to do something in the Community, so in October of that year I started my shift at the Hospice Shop on a Thursday morning.

Sue Boreham, who had been much involved in the Hospice Fundraising Link Group, was the inspiration for starting the shop in Stan's old electrical-come-variety store. It was very simple and we had no hot water or up-to-date mod cons, but it took off. It was a bit like entering Aladdin's Cave as the shop was crammed with a huge variety of clothes, bric-a-brac, old books, shoes, china, glasses, etc. The list is endless.



My first morning was with another volunteer who had been in the gent's department at Weekes Store in Tunbridge Wells. He looked so efficient with his tape measure around his neck. Audrey Parish, who also lives in the village, was also on this shift and we have worked together harmoniously for 14 years.

Sue Boreham moved on to help organise the Village Market and her place was taken by Lynne who had also been a volunteer. Lynne brought her own ideas for the shop and it became more of a boutique style. Naturally some of the customers found the change not to their liking, but many liked the simpler uncluttered look. Improvements in the lighting and new carpets, etc. enhanced the overall appearance; Lynne celebrated with all the volunteers the 10th Anniversary of the shop, with champagne, balloons and a cake, and soon after this announced that she was leaving. She and her husband, who had now retired, decided to go touring in their new motor-home.

A new manageress was sought, and Moira Sherwood, who was running the Hospice's Tunbridge Wells shop, became our leader. New brooms sweep in, and Moira was no exception. To this day she has a passion for changing the shop around, making it more user-friendly, but never boring. Stock is constantly moved on and all items reasonably priced, with the immoveables discounted or moved to the sale rail. Real bargains to be had here!

The shop has gone from strength to strength and we draw our customers from a wide area – and all this through word of mouth. Still the donations roll in. Designer clothes, High Street labels, books, jewellery, bone china, antiques, bric-a-brac, children's clothes, toys, the list is endless and fascinating. Couples, and there are many downsizing, whose children do not appreciate the china and crystal of earlier generations, bring some beautiful items to the shop. Young parents buy prams, high chairs, baby clothes, saving money in these straitened times. Grandparents too replenish the toy boxes they keep in their homes for visiting grandchildren. Most of these are of the traditional kind: jigsaw puzzles, dinky cars, and of course well loved children's books as they have more time to read to the children.

We all see regular customers on our shifts and they become like old friends, always thrilled when they spot a bargain. Over the years I have heard stories of happy and sad events in their lives. One couple are film extras in their retirement, and it's interesting to hear of the films in which they are appearing, albeit in a minor way. Another fairly regular gentleman who comes is Raymond Briggs, the creator of 'The Snowman'. He says we are his favourite charity shop! Next time I see him I am going to ask him if he will sign his book for me and we can then auction it or put it in a raffle.

Many people comment on the excellent window dressing. This is usually themed, and is carried out by Jean Smith who has volunteered her help for some 14 years. Last, but not least, are the 26 volunteers who man the shop and give of their time unstintingly. Moira is ever appreciative of us all, and always takes an interest in our lives. The atmosphere is welcoming and friendly and we all work for a common purpose. Takings are up year on year. However, it is you, the public and people of Pembury we must thank for your generosity in not only buying, but in the wonderful donations you give that make this shop so popular.

**Jenny Humphrey**

## David Salter

### Gas & Plumbing Services

Central Heating Installations & Upgrades

Boiler & Cylinder Changes

Breakdowns, Connections & Servicing of all gas appliances

15 Years experience with British Gas

Corgi Registered



**EMERGENCY CALL OUTS – MOBILE 07733 107333 – HOME 01892 824481**

## PHIL'S FIRES

### The Fireplace & Chimney Specialist

- ✓ Stove Installations
- ✓ Chimney Linings
- ✓ Fireplace Installations
- ✓ Manufactured, Twin-Wall Chimney Construction
- ✓ Cows and Birdguard Fitting
- ✓ Chimney Capping
- ✓ Clean, Reliable, Fully Insured
- ✓ Free Quotations

**CALL 07877 031580**

## SJ Services

SJ Services have become experts in the treatment of **Japanese Knotweed** and are currently treating infestations from as far afield as Birmingham down to Southampton. We hold all relevant insurances and chemical licenses and due to our new stem-injection system we can now guarantee to eradicate your infestation.

For a free estimate please call 01622 873216

Strettit Farm  
7 Snoll Hatch Road  
East Peckham  
Kent TN12 5EE



## PEMBURY BOWLS CLUB

**A**T LAST spring has arrived and the start of the new bowling season. We are welcoming a number of new members but would like more to join us, either as full playing members, casual players or just giving it a try. By the time this is published we will have held our open day on 31 May, but our roll-up days are Monday and Friday afternoons 2-4, so just come along and have a go.

The club will be welcoming a touring team on Friday 4 June and our Open Triples Turnaround Tournament the following Sunday, 6 June. It would be great to see some local people occupying the seats around the green then or at any time matches are on.

More information about Pembury Bowls Club can be found on our website: [www.pemburybowlsclub.co.uk](http://www.pemburybowlsclub.co.uk).

**Barbara Scholten**, Competitions Secretary



## PEMBURY TREES – SILVER BIRCH

**T**HESE SILVER Birches are outside Camden Court and are now too old to show their silver bark – probably about 60 or 70 years. Silver Birches grow fast and die young so rarely last 100 years. They are the first to colonise new spaces but quickly get outgrown by larger, more long-lived trees.

They often have messes of twigs in them that are called witches' brooms. These are caused by infections which make the tree grow like mad, producing far too many twigs in one place. They don't seem to do the tree any harm and they are often taken over by small nesting birds.

Silver Birches are always shedding something; bud scales in the spring, seeds late summer to early winter and twigs pretty much all year round.

Younger, less gnarled trees can be found in Belfield Road where you can see the silver bark which gives it its name – coined in 1830 by Tennyson in his poem entitled The Dirge.



**Caroline Mazzei**

*Betula pendula*

## PEOPLE OF PEMBURY IN THE PAST

*Editor: We have received the following email. Do you remember this family? If you have any information about them, or even photographs, please contact the editor, whose details are on the inside front cover.*

**M**Y NAME IS Tim Cottingham and I live in Brisbane, Australia. I lived in the Kent area until 2001 when we came out here to live. While in the UK I was doing some family research and found lots of relatives. Fortunately I have been able to carry it on out here. Over the last year I have found that some of my Cottingham relatives lived in Pembury. There was a Fred and Nancy Cottingham and their son Arthur who lived in Church Road, Pembury. Sadly Arthur died in 1949, Fred in 1957 and Nancy in 1960. I have managed to locate a photograph of Arthur and his mum, Nancy, but not of Fred.

Fred was one of 12 children; so far I have been able to find photos of all the other children except for Fred Cottingham. I have tried lots of angles to locate a photo but so far they haven't been successful.

# Burtons Pembury's Solicitors

★ Prompt Efficient Friendly Service

The Tyled House  
23a High Street  
Pembury, Kent TN2 4PH

Tel (01892) 824577

## LIBRARY OPENING TIMES

Pembury Library, The Hop House, Henwood Green Road, Pembury TN2 4HS

Tel: 822278. Email: [pemburylibrary@kent.gov.uk](mailto:pemburylibrary@kent.gov.uk)

<i>Monday:</i>	<i>Tuesday:</i>	<i>Wednesday:</i>	<i>Thursday:</i>	<i>Friday:</i>	<i>Saturday:</i>	<i>Sunday:</i>
Closed	9 am-6 pm	9 am-6 pm	9 am- 6 pm	9 am- 6 pm	10 am-2 pm	Closed

Pembury Library now participates in a new scheme to recycle old batteries. Just bring them along during opening times and place them in the special container.

The Library also offers a Home Library Service for anyone who is unable to visit the library. A volunteer will deliver and collect a selection of books to readers' homes on a monthly basis. Please contact the library for more information.



## HAVE YOU SPOTTED THE PEMBURY PARROTS?

**I**T WOULD appear that over the last few months we have two new residents in Pembury, in the form of a pair of large green parrots or parakeets. They have been spotted in the trees in and around the village green. You cannot mistake their squawking for any other birds. Apparently they were first sighted in Pembury in the winter in someone's garden and seem to have somehow survived our British weather, even with all the snow we had. Has anyone lost two parrots or have they just taken a liking to Pembury? If they are yours or if anyone has any idea where they came from, perhaps you could contact the RSPB or the local RSPCA to help safeguard the future of these lovely visitors. – **Lesley Campbell**

These are probably Ring Necked Parakeets (*Psittacula krameri*) that originate from Africa and Southern Asia. They're part of a feral, naturalised population that first bred in the UK as far back as the early 70s.

The largest concentration of these birds is up around Esher in Surrey but they have spread extensively throughout the South East and a number of breeding groups have been identified in Kent. While they're very pretty birds, seeing them around Pembury is not particularly good news. Their main diet is fruit and berries and they're particularly destructive feeders, especially since flocks tend to be quite large. They also out-compete many of our native birds for available food.

The harsh winter we've just had will probably have reduced numbers but there are estimated to be 5,000 breeding pairs in S.E. England. Let's hope the two that have been seen around the village were a stray pair passing through.

**Rick Bayles**, Pembury Eco Group



## PEMBURY GARDENERS' SOCIETY

**D**ESPITE THE enduring winter, the Gardeners' Society bravely went ahead with its spring show. Yes, the Daffodils were far fewer than usual, but those that were there were still of a high standard.

And as if to make up for it, people entered the cookery, handicraft and floral art classes in higher numbers than usual.

The children had two classes: a decorated Easter cup cake – won by Oscar Riley, and a posy of spring flowers – won by Ruth Mazzezy.

Looking forward to the summer show on Saturday 10 July, we can anticipate glorious Sweet Peas, Roses, masses of vegetables and

plenty of other flowers including a class for a hanging basket.



Floral Art has, for example, classes for arrangements in a watering can, in a candlestick and to represent the ballet Swan Lake. Cookery includes Meringues, Madeleines and Eclairs.

The juniors have to make a miniature garden in a regular seed tray (recent years suggest that the judges do not expect growing plant material) or to decorate a small pizza. Both classes are divided into under 7 years and 7–11 years.

For a full show schedule or to enter any of the classes, please contact John Wood on 824877. – **Caroline Mazzezy**

## CRIME IN PEMBURY

**S**PRING AT Last and with it the lighter evenings. Unfortunately the reported crime figures for the months of January, February and March 2010 show an increase over the preceding quarter to 51 against 39; an increase of 12, approximately 30%.

I have just woken up to the fact that the figures sent to me by the police for October, November and December 2009 did not show any numbers for criminal damage, which is totally unheard of. This was either a clerical error on their part or a deliberate attempt to milk the truth. I will investigate and report back to you.

Theft and burglary are both showing an increase and all I can ask is that you do not make things easy for the criminals among us.

In April alone, there has been damage to a shop in the High Street and to the new lights in the Recreation Ground.

Please report anything suspicious - you may be able to prevent a crime.

I would also like to briefly touch on the subject of traffic speed. It's bad enough when through traffic shows a total disregard for our safety but when our own parishioners show the same contempt, we have a problem. To those people, I say, don't be selfish and slow down.

**Hugh Boorman**

MONTH	Assault	Burglary Dwelling	Burglary Other	Criminal Damage	Fraud and Forgery	Theft from Motor Vehicle	Theft Offences	Theft of Motor Vehicle	Vehicle Interference	TOTAL
January 2010	1		4	2	1	2	3			13
February 2010	1	1	5	2		1	3	1	1	15
March 2010	2		5	3	1	4	7		1	23
<b>TOTAL</b>	<b>4</b>	<b>1</b>	<b>14</b>	<b>7</b>	<b>2</b>	<b>7</b>	<b>13</b>	<b>1</b>	<b>2</b>	<b>51</b>
ROAD										
Beagles Wood Road	1	1	2			1	1	1		7
Canterbury Road			3			1				4
Chalket Lane			1				1			2
Elmhurst Avenue	1			2						3
Hastings Road	1			1			2			4
Henwood Green Road				1		1				2
High Street				1			1			2
Lower Green Road				1		1	1			3
Pembury Road					1		4			5
Petersfield			2			1			1	4
Romford Road			4							4
Sandhurst Avenue			2			1			1	4
The Grove				1						1
Tonbridge Road	1					1	3			5
Woodhill Park					1					1
<b>TOTAL</b>	<b>4</b>	<b>1</b>	<b>14</b>	<b>7</b>	<b>2</b>	<b>7</b>	<b>13</b>	<b>1</b>	<b>2</b>	<b>51</b>

## FOR YOUR DIARY

**Village Market** – Village Hall, Tuesdays 9am-11.30am.

**Pembury Community Warden Surgery** – Village Hall, Tuesdays 10am-11.30am.

**Town & Country (High Weald Housing)** – Clinic, Tuesdays 10am-11.30am.

**CAB** – Pembury Library, Thursdays 9.30am-11.30am.

### June

- 18 & 19 Pembury Players – Village Hall – 8pm
- 19 Musical Picnic – Village Green – 6pm
- 27 Friends of St. Peter's Strawberry Tea – Old Church – 2.30-4.30pm

### July

- 1 Afternoon WI: 'Emma and Nelson' by Sheila Boyd – Village Hall – 2pm
- 2 Evening WI: 'Dorothy in the workhouse' by Judith Kinneson Burke – Village Hall – 7.45pm
- 3 Pembury Footpath Walkers – Meet at Stonecourt Lane bus stop – 2.15pm
- 5 Floral Art – Village Hall – 7.45pm
- 8 Pembury Book Group – Pembury Library – 11am
- 10 Pembury Fun Day – Lower Green Recreation Ground – 2-5pm
- 10 Pembury Gardeners' Society Summer Show – Village Hall – 2.30pm
- 12 Pembury U3A – Catholic Hall – 2.30pm
- 12 Parish Council Meeting – Pavilion – 8pm
- 30 Deadline for Pride in Pembury Entries

### August

- 5 Afternoon WI: Members' Outing – Village Hall – 2pm
- 6 Evening WI: Annual Social Evening – Village Hall – 7.45pm
- 7 Pembury Footpath Walkers – Meet opposite the Camden Arms – 2.15pm
- 9 Pembury U3A – Catholic Hall – 2.30pm
- 9 Floral Art – Village Hall – 7.45pm
- 12 Pembury Book Group – Pembury Library – 11am

### September

- 2 Afternoon WI: 'Sweets and Chocolates' by Mrs Margaret Clift – Village Hall – 2pm
- 3 Evening WI: The medium of radio & the BBC by Andy Garland – Village Hall – 7.45pm
- 4 Pembury Footpath Walkers – Meet at Stonecourt Lane bus stop – 2.15pm
- 6 Floral Art – Village Hall – 7.45pm
- 9 Pembury Book Group – Pembury Library – 11am
- 11 Pembury Gardener's Society Autumn Show – Village Hall – 2.30pm
- 13 Pembury U3A – Catholic Hall – 2.30pm
- 13 Parish Council Meeting – Village Hall – 8pm
- 19 Hospice in the Weald 10K and 1K Fun Run – Tunbridge Wells Lower Green Cricket Ground – 10am

## ROSIE'S RECIPES

**A**T OUR last editorial meeting I was asked to find some vegetarian recipes with a little more spice in them. Well I have searched through my archives and have come up with the following. I do hope you will give them a go although the Choc and Nut Trifle may not be so vegetarian but perhaps a little indulgent – there are 715 calories in each serving! Oh well, the diet starts next week. Have a great summer.

### Spicy Bean and Mushroom Tacos

#### Ingredients for 4 servings:

8 taco shells  
450g (16oz) can baked beans in tomato sauce  
300g (11oz) can button mushrooms, drained  
1 tomato, roughly chopped  
2 tsp chilli sauce  
spring onions, chopped and grated  
50g (2oz) cheese to garnish



#### Preparation:

Heat oven to 180°C (350°F/Gas 4). Put taco shells on a baking tray and heat for 5–10 mins until crisp. Put beans, mushrooms, tomato and chilli sauce in a saucepan. Cook, stirring, for 4–5 mins. Spoon bean and mushroom mixture into taco shells. Mix together onion and cheese and sprinkle over. Serve immediately. Tip: Do not separate the taco shells before heating in the oven, or they will close up and become very difficult to fill.

### Chilli Beef Pie



#### Ingredients for 4 servings:

350g (12oz) of Quorn (for non vegetarians use lean minced beef)  
2 tbsp vegetable oil  
1 onion, chopped  
1 green pepper, seeded and chopped  
1 garlic clove, crushed  
2 celery sticks, diced  
1 tsp curry powder  
few drops chilli sauce (optional)  
salt and pepper, to taste  
½ tsp dried thyme  
7 tbsp tomato ketchup  
75g (3oz) raisins  
75ml (3fl oz) water  
1 x 20 cm (8in) bought shortcrust pastry case  
6 sliced pimento-stuffed olives, and onion and green pepper rings, to garnish (optional)

#### Preparation:

Heat the oil in a large saucepan and fry the meat for 5–10 mins (the Quorn will probably take less time), stirring, until it changes colour. Add the onion, pepper, garlic and celery and cook for a further 5 mins. Stir in curry powder, chilli sauce, if using, salt and pepper, thyme, ketchup, raisins and water. Cover and simmer for 15 mins. Heat oven to 230°C (450°F/Gas 8). Spoon meat mixture into pastry case and garnish with the sliced olives and onion and pepper rings, if using. Bake for 15 minutes. Cut into wedges and serve.

Good served with: Tortilla chips and a crisp salad.

## ROSIE'S RECIPES – continued

### Choc and Nut Trifle:

#### Ingredients for 4 servings:

100 g (4 oz) plain chocolate  
 75g (3 oz) small macaroons  
 2 tbsp brandy or sherry  
 411g (14½oz) can pear quarters, drained.  
 600ml (1pt) fromage frais  
 300ml (½pt) ready-made custard  
 300ml (½pt) whipping cream  
 50g (2oz) chopped toasted hazelnuts  
 ½ tbsp cocoa

#### Preparation:

Melt chocolate in a bowl over pan of hot water. Divide macaroons between four individual dishes. Arrange in base of dish. Pour brandy over macaroons and top with pears. In a bowl, mix together fromage frais and custard. Stir in chocolate. Spoon over fruit. Cover and chill until chocolate mixture has set. Whip cream until it stands in soft



peaks. Carefully fold in nuts. Smooth over chocolate mixture and sieve cocoa over top. Serve. Variations: For a non-alcoholic trifle, substitute 2 tbsp fresh orange juice for brandy and use mandarins instead of pears.

**Rosie Bass**

## CHURCH TIMES

### ST. PETER'S CHURCH SERVICES

#### Upper Church

8am Holy Communion

9.45am The Parish  
 Eucharist and  
 Jun Church

10am Holy Communion  
 (Wednesdays)

#### Old Church

11.30am Matins (except  
 first Sunday, Holy  
 Communion)

Evening services as  
 advertised on Church  
 noticeboards.

Contact tel. no. 824761.  
[www.pemburychurch.net](http://www.pemburychurch.net)

### CATHOLIC CHAPEL OF ST. ANSELM – PEMBURY

Sunday Mass 10.30am

Holy Days – Vigil Mass  
 7.30pm

Weekday Service:  
 Wednesday – Mass 7pm

[www.stjustusandanselm.org.uk](http://www.stjustusandanselm.org.uk)

### PEMBURY BAPTIST CHURCH

Whether you are familiar  
 with church or have never  
 been to a church before,  
 PBC is an enjoyable, caring  
 and diverse community  
 with activities all through  
 the week for all ages.

Our services explore  
 relevant life issues and are  
 on Sundays at 10am for a  
 family service (with  
 children's activities) and  
 6.30pm for a café service.  
 We'd love to see you there!

Please call 825590 or visit  
[www.pemburybaptistchurch.org.uk](http://www.pemburybaptistchurch.org.uk) for details.

## YOUR REPRESENTATIVES

### PARISH COUNCIL



Cllr June Crowhurst,  
44 Elmhurst Avenue TN2 4DA  
Tel: 824873  
*Chairman of Parish Council*



Cllr David Coleman  
22 Ridgeway TN2 4ER  
Tel: 823402



Cllr Patrick Gillan  
1 Knights Close TN2 4EL  
Tel: 825324  
*Chairman, Amenities, Christmas Lights and Pride in Pembury*



Cllr Melanie Karpinski  
48 Maidstone Road TN2 4DE  
Tel: 824466  
*Chairman, Environment, Environmental Issues (incorporating Allotments & Burials)*



Cllr Andrew Procter  
82 Woodhill Park TN2 4NP  
Tel: 823064  
*Chairman, Audit, Finance and Personnel Working Group*



Cllr Chris Snow  
1 Cornford Park TN2 4PW  
Tel: 825428



**Clerk to the Pembury Parish Council**  
Barbara Russell, 6 The Grove  
TN2 4BU. Tel: 823193. Email:  
clerk@pemburypc.kentparishes.gov.uk



Cllr Kevin Edser,  
49 The Gill TN2 4DJ  
Tel: 823643

*Vice Chairman of Parish Council  
Chairman of Planning & Highways Working Group*



Cllr Janet Ditchett,  
7 Cornford Park TN2 4PW  
Tel: 822586



Cllr Duncan Hope  
80 Woodhill Park TN2 4NP  
Tel: 824496



Cllr Sally Osborn  
34 Canterbury Road  
TN2 4JT. Tel: 822726



Cllr Beverli Shaw  
3 Knight Ridge TN2 4HP  
Tel: 823268  
*Chairman of Public Relations Working Group*

**Deputy Clerk to the Pembury Parish Council**  
6 The Grove TN2 4BU. Tel: 823193 Email:  
deputy@pemburypc.kentparishes.gov.uk

### BOROUGH COUNCIL

Paul Barrington-King, 22 The Coppice, TN2 4EY. Tel: 825144

June Crowhurst, 44 Elmhurst Avenue TN2 4DA. Tel: 824873

Mike Tompsett, 14 Gimble Way, TN2 4BX. Tel: 822711

### COUNTY COUNCIL

Kevin Lynes, KCC, Sessions House, County Hall, Maidstone, Kent ME14 1XQ. Tel: 890922

## VILLAGE ORGANISATIONS

### AGE CONCERN

Mrs Sandra Springett. Tel: 522591

### AMBERSIDE DANCE STUDIO

Principal: Victoria Mustill-King. Tel: 724777

### BLACK & WHITE MARCHING MILITAIRE

Louise. Tel: 823097

### CATHOLIC CHURCH

Hall Enquiries: Janet Ditchett. Tel: 822586

### CONSERVATIVE PARTY

Terry Cload, 56 Herons Way. Tel: 823966

### FRIENDS OF PEMBURY HOSPITAL

c/o Pembury Hospital. Tel: 823535

### FRIENDS OF PEMBURY PARISH CHURCH

Chairman: Mrs S. Clarke, Little Stanton,  
Romford Road. Tel: 823932

### GUIDES, BROWNIES AND RAINBOWS

Mrs M. Allan, 9 Henwood Green Road. Tel: 822373

### HOSPICE IN THE WEALD

Maidstone Road. Tel: 820500

### KENT COLLEGE

Headmistress: Mrs Sally-Anne Huang. Tel: 822006

### KENT COLLEGE PREP SCHOOL & NURSERY

Headmistress: Mrs Ann Lawson. Tel: 820204

### LABOUR PARTY

Dave & Sally Osborn, 34 Canterbury Rd. Tel: 822726

### LIBERAL DEMOCRATIC PARTY

David Mills. Tel: 825577

### LITTLE RASCALS

c/o PBC Office. Tel: 825590

### MULTIPLE SCLEROSIS SOCIETY

TW District. Tel: 0845 6037882

### NATIONAL FEDERATION OF THE BLIND, UK

Michael Coggles. Tel: 822705

### NEIGHBOURHOOD WATCH

Gill Pavely. Tel: 822605

### OUT AND ABOUT CLUB

Sue Giles. Tel: 823318

### PEMBURY ALLOTMENT ASSOCIATION

Brenda Brown. Tel: 824163

### PEMBURY ATHLETIC (YOUTH) FOOTBALL CLUB

Colin Forward. Tel: 825436

### PEMBURY BAPTIST CHURCH

Rev. Wayne Alexander, Church Office. Tel: 825590

### PEMBURY BOWLS CLUB

Len Birnie. Tel: 01892 681222

### PEMBURY BRIDGE CLUB

Geoff Plummer. Tel: 824652

### PEMBURY COMMUNITY LINK GROUP FOR HOSPICE IN THE WEALD

Graham Hayler. 9 The Gill. Tel: 824680

### PEMBURY COMMUNITY WARDEN

Tel: 07813 694138

### PEMBURY COMMUNITY WORKING PARTNERSHIP

Parish Office. Tel: 823193

### PEMBURY CRICKET CLUB

Hon. Secretary: Sandy Crouch, 7 The Forge,  
Five Oak Green. Tel: 834166

### PEMBURY ECO GROUP

Rick and Masha Bayles. Tel: 822865

### PEMBURY FOOTBALL CLUB

Saturday Secretary: Bill Baker. Tel: 825822

Sunday Secretary: Phil Craxton. 823928

Chairman: Andy Rice-Tucker,

35 Woodhill Park. Tel: 822483

### PEMBURY FOOTPATH WALKERS

N. & K. Franklin, 11 The Meadow. Tel: 823212

### PEMBURY GARDENERS

Ann Purton. Tel: 824223

### PEMBURY PAVILION BOOKINGS

Colin Forward. Tel: 825436

### PEMBURY PHOENIX TWIRLERS

Dave Brett. Tel: 824233

### PEMBURY PLAYERS

James Whitehorn. Tel: 824854

### PEMBURY SCHOOL

Headteacher: Mrs C. Thewlis. Tel: 822259

### PEMBURY SCHOOL ASSOCIATION

Sam Knight. Tel: 824862

### PEMBURY SCHOOL HOUSE NURSERY

Teacher in charge: Rachel Teigen. Tel: 825580

### PEMBURY SHORT MAT BOWLING CLUB

Arthur Storey. Tel: 822509

### PEMBURY SOCIETY

Chairman: Ken Watts. Tel: 822770

### PEMBURY TENNIS CLUB

Mrs S. Smith, 2 Ridgeway. Tel: 822405

### PEMBURY U3A

Membership Secretary: Andrew Richardson.  
Tel: 824012

### PEMBURY UPPER AND OLD CHURCH

Rev. Matthew Jackson Tel: 824761

### PEMBURY VILLAGE MARKET

Karol Young. Tel: 823413

Jean Tyler. Tel: 01732 357820

### PEMBURY YOUTH THEATRE ACADEMY

Dee Barrington-King. Tel: 825144

### PEPENBURY

Principal: Mr Roger Gibson, Cornford Lane. Tel: 822168

### POLICE COMMUNITY SUPPORT OFFICER

PCSO Nick Brown. Tel: 07772 226001

### ROTARY CLUB OF SOUTHBOROUGH & PEMBURY

Secretary: Nigel Stratton. Tel: 822936

### ROYAL NATIONAL LIFEBOAT INSTITUTION

Peter Chartres, 54 Woodhill Park. Tel: 823759

### SCOUTS, CUBS AND BEAVERS

Mike Cartwright, 16 Cornford Park. Tel: 823235

### SCOUT & GUIDE HQ MANAGEMENT TEAM

Mike Cartwright, 16 Cornford Park. Tel: 823235 and

Moirra Allan, 9 Henwood Green Road. Tel: 822373

### ST. ANSELM HALL ENQUIRIES

Janet Ditchett. Tel: 822586.

### ST. PETER'S MOTHERS' UNION

Secretary: Mrs M. Adams. Tel: 822769

### TOWN & COUNTRY (HIGH WEALD HOUSING)

Sally Hunter. Tel: 501605

### TREE WARDEN. Caroline Mazzev. Tel: 822493

### TUNBRIDGE WELLS ACCESS GROUP

Gill Pavely. Tel: 822605

### TUNBRIDGE WELLS & DISTRICT VICTIM SUPPORT SCHEME. Tel: 513969

### VILLAGE HALL

Manager (bookings): Rachel Windus. Tel: 822837

### WHEELCHAIR LOAN

(24 hour maximum, for Pembury Residents)

Pauline Hawker. Tel: 824327

### WOMEN'S INSTITUTES

Afternoon: Mrs Margaret Buss. Tel: 822530

Evening: Mrs Angela Saunders. Tel: 822307



# HENRY PAUL FUNERALS

*Contemporary and Traditional Services*

Henry Paul Funerals is a traditional family run funeral directors purposely dedicated to providing distinct levels of service, choice, dignity and care to bereaved families in Pembury, Tunbridge Wells and surrounding areas.

24 Hour Emergency Service

Home Visits

Private Chapel of Rest

Full Fleet of Modern &  
Vintage Vehicles

Floral Tributes

Catering

Memorial Masonry

Pre-paid Funeral Plans

Repatriation

10 High Street, Pembury, Tunbridge Wells, Kent TN2 4NY  
01892 825505 | [info@henrypaulfunerals.co.uk](mailto:info@henrypaulfunerals.co.uk) | [www.henrypaulfunerals.co.uk](http://www.henrypaulfunerals.co.uk)