

FREE

PEMBURY NEWS

Brought to you by Pembury Parish Council

Summer 2026

Issue 206

Inside this issue:

- **Four paws and a big heart: meet Pembury's most unusual pupil**
- **Why the Local Plan matters for Pembury**
- **Come together for Picnic in the Park 2026**



ARKITON

Roofing & Building Ltd

LOCAL • FRIENDLY • RELIABLE



New Roofs



Guttering



Roof Repairs



Flat Roofs



Chimney Repairs



Plus much more...

*Arkiton offer the best Quality and Service - Price Promise Guarantee
Arkiton Roofing & Building Ltd will beat any like-for-like quote*

CALL US TODAY FOR A FREE QUOTE

01892 884540

ARKITON.CO.UK

CONTENTS

Welcome	5	Church Chatter	25
Busy Junction Made Safer	7	Scouting in Pembury	27
Tell us about Local Heroes	7	Pembury Bowls Club Roundup	29
What is a Local Plan	8	Cricket Underway	30
Swift Initiative Launched	11	Pembury Players	31
Cover Story: Pedro the Cat	12	Energy from Waste	33
No Mow May	15	Out & About Club	34
Military Road Run	16	Pembury Evening WI	35
Hospice in the Weald	19	Support Aspens	36
It's Picnic Time!	21	Village Organisations	37
Pembury Guiding Volunteers	22	PPC Committees and Memberships	38
Pembury Gardeners	23	Your Councillors	39
Community Cafe	24		

PEMBURY VILLAGE NEWS

C/O Parish Council Office, Lower Green Recreation Ground,
Lower Green Road, Pembury, TN2 4DZ.

COPY DEADLINE FOR NEXT ISSUE:

Pembury Village News (PVN) is published four times per year by the Parish Council. Deadline for the Autumn issue is 24 August 2026. Consideration will be given to all articles providing space allows. To enquire about submitting articles or the distribution of the PVN please email: pvn@pemburyparishcouncil.gov.uk

Distribution enquiries: 01892 823193

Email: pvn@pemburyparishcouncil.gov.uk Web: www.pemburyparishcouncil.gov.uk

The Editor and Publisher, Pembury Parish Council, are not responsible for any opinions or comments made by contributors or advertisers in the Pembury Village News. The Editorial team's decision is final on whether or not to publish any item submitted. They reserve the right to edit (that is to cut, précis, alter, correct grammar and spelling) any item published. We will only include an article if space allows.

R Goode Plastering

All plastering & Rendering works

15 years experience Contact for free quote



1 Herons Way
Pembury TN2 4DH

Tel: 01892 319853 Mobile: 07900 907445
E-Mail: rgoodeplastering@hotmail.co.uk



WHETHER YOU'RE LOOKING FOR HIGH-ENERGY SESSIONS TO BOOST YOUR HEART RATE OR LOW-IMPACT CLASSES TO ENHANCE FLEXIBILITY AND TONE YOUR BODY, WE HAVE SOMETHING FOR EVERYONE.



OUR GROUP EXERCISE CLASSES INCLUDE:
PILATES
LEGS, BUMS & TUMS
ZUMBA
WEIGHTS WORKOUTS
CLUBBERCISE

LOOKING FOR A PERSONALISED FITNESS EXPERIENCE? OUR PERSONAL TRAINING PACKAGES PROVIDE WORKOUTS TAILORED SPECIFICALLY TO YOUR INDIVIDUAL NEEDS. PLEASE GET IN TOUCH FOR MORE INFO.

📞 07876787869

🌐 www.pemburyfitness.co.uk



INSPIRE. BELIEVE. SHINE

360 Dance is a successful and welcoming dance school for all ages based in Pembury.

BALLET * MODERN * TAP * JAZZ * EXAMS * SHOWS

Contact us to begin your dance journey today.



CONTACT: SADIE VAN DER SPUY LISTD
SADIE@360DANCE.CO.UK
WWW360DANCE.CO.UK



Dawn Hodgson MSSCh MBChA
Chiropodist

HCPC Registered - Home Visits

- Professional Advice and Friendly Care
- A Broad Range of Chiropody Services Available, Including:
 - Verruca Removal
 - Ingrowing Toenail Treatment
 - Fungal Infections
 - Corn Treatment and Removal
 - Expertise in Diabetic Assessment & Maintenance

Day and evening appointments are available - Discount for the over-70s
Simply Health 50% refund - Police checked for your reassurance

T: 01892 824 916 M: 07761 583 756

E: dawn756@live.com

www.pemburychiropodist.co.uk

7 Greenleas, Pembury, Tunbridge Wells, Kent, TN2

WELCOME

Welcome to the new-look Pembury News, brought to you by none other than Pembury Parish Council.

Every now and again we all need a makeover, and our village magazine was no exception. I was part of the task force for this new initiative and got straight onto looking at popular covers loved throughout these green isles: *Vogue*, *Horse and Hound*, *Hello!*, *OK!* and *Attitude*. In the end, we went with something more conventional. I love it and hope you do too.

Inside you will find a whole heap of stories to keep you enthralled, including the recent Military Road Run, with its spectacular array of military vehicles, the new swift initiative launched to protect Pembury's winged summer visitors, and of course Pembury School's newest pupil, who has fur and whiskers.

Coming up on 4 July it's Picnic in the Park, a whole-village picnic event full of fun, laughter and sunshine. Yes, it will be sunny - c'mon, let's be positive!!

Also inside this edition, you will find out why the 'Local Plan' matters and, if you are not sure what that is, read on.



Despite the challenges that we face as a village and as a community, we are more than fortunate to live in such a beautiful part of the world. Pembury really is a marvellous place: there is something for everyone, whatever your age, and we are lucky to have some fantastic local towns nearby, as well as being close to London – one of the most vibrant cities on earth!

I'm going to sign off now, quite literally, as I say farewell after eighteen years of serving as a Parish Councillor, to focus on my writing. Meanwhile, on behalf of Pembury Parish Council, I wish you a very happy summer and see you all on 4 July in the Park.

Cllr Patrick Gillan
Pembury Parish Council

JOIN US FOR PEMBURY'S COMMUNITY PICNIC EVENT...

PICNIC IN THE PARK 2026

SAVE THE DATE

**SATURDAY
4TH JULY**

FIND OUT MORE ON PAGE 20

PEMBURY
PARISH COUNCIL



Penumbra
BLINDS AND AWNINGS

Your Local Manufacturer and Supplier
of **Blinds & Awnings. Great Quality,**
Great Service, Great Prices.



Showroom open by appointment — www.penumbra blinds.com | 01892 825522

Unit 2 Albans Farm, Romford Road, Pembury, Tunbridge Wells TN2 4BB



Pembury, Kent

personaltouch computers

www.pt-c.co.uk



Home and business IT

Up front costs, no unexpected hourly fees



Laptops/custom PCs

Wireless / ADSL / CABLE installs, helpful advice



Callouts available

Business hours / evenings and weekends

Aaron Taylor 07545 996 410

email – aaron@pt-c.co.uk

n e t w o r k i n g

s e c u r i t y

r e i n s t a l l a t i o n

u p g r a d e s

P C / s e r v e r b u i l d s

r e p a i r s

We are pleased to share that, following our proposal to install double yellow lines at a busy junction in Pembury, the scheme is being taken forward by Kent County Council.

Last year, as a result of complaints from residents, we undertook a consultation about the junction of Maidstone Road and Church Road. 87% of respondents felt that the junction posed a safety concern to pedestrians and drivers, with cars parked on the corner making it difficult to pull out safely, particularly around school time.

KCC have since undertaken a statutory consultation and have approved the scheme to add double yellow lines to the junction, which will be funded by a Highways improvement grant. The work is set to go ahead in May/June this year.

Thank you again to those who took part in the consultation process, helping us to improve safety and access for local residents.



TELL US ABOUT PEMBURY'S LOCAL HEROES

Does the name Rodney Harry Rackshaw Downes ring any bells? How about Angus Fairhurst? Both are artists, but you might be more familiar with names such as Michel Roux Jr., the Michelin-starred chef, or Robb Cross, the World Champion darts player. What do they all have in common? They were all born in Pembury!

Pembury has also been the birthplace of Dame Kelly Holmes (born in 1970) and cricketer Sam Billings (born in 1991). Quite a list for a village of our size!

Of course, fame isn't everything. While there may well have been more high-profile names born here in recent years, we're just as interested - perhaps more so - in Pembury's local heroes.

Do you know someone living in the village whose achievement deserves a bit of recognition? Perhaps your grandson swam a mile for charity, or your daughter raised funds by running a marathon. Maybe a neighbour volunteers quietly week after week, making a real difference behind the scenes.

We at Pembury News would love to hear these stories, so please get in touch via pvn@pemburyparishcouncil.gov.uk to let us know!

WHAT IS A LOCAL PLAN...

You may have heard people talking about the Local Plan and wondered what it means for Pembury. This short guide explains in straightforward terms what the plan is, which local sites are involved, and how residents can keep informed and have their say as proposals come forward.

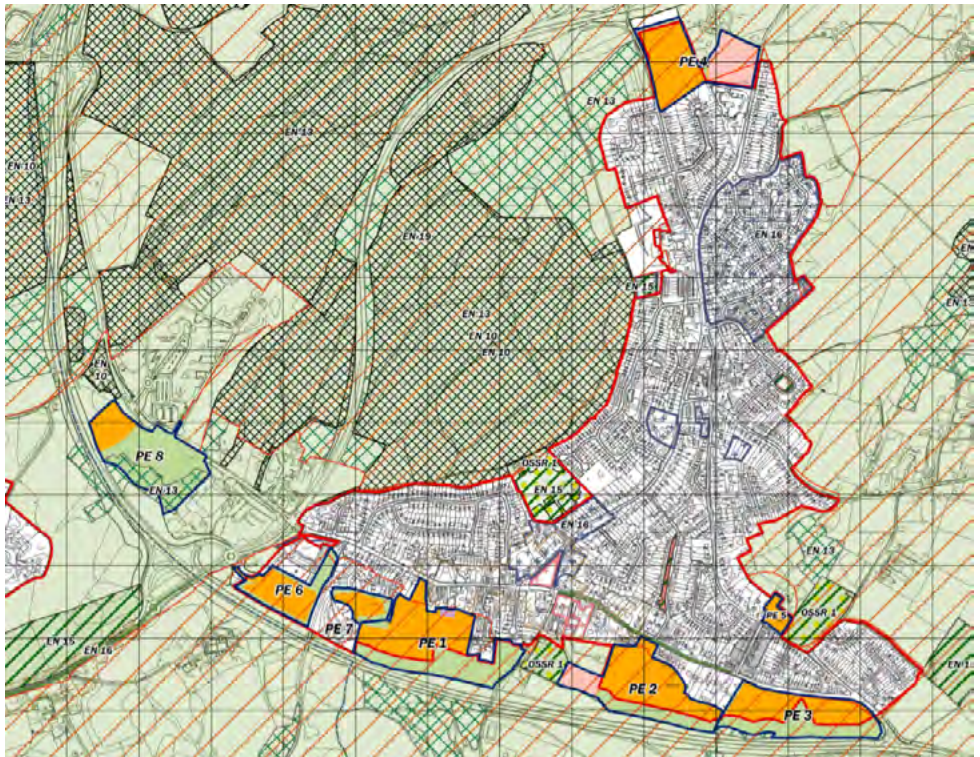
A Local Plan is prepared by Tunbridge Wells Borough Council (TWBC). It sets out where new homes and facilities can be built, and which areas should be protected, over a long-term period of around 15–20 years.

The current Tunbridge Wells Local Plan (2020–2038) identifies land in the Borough where housing development may take place in principle. This does not mean building happens immediately. Detailed planning applications are still required, and these are assessed separately.

TWBC has also begun work on reviewing the Local Plan. This may identify further development sites in the future. Public consultations will take place as part of this process, giving residents a chance to share their views before any decisions are made.

Housing sites in and around Pembury

The Local Plan includes several sites in Pembury that are shown on the map below. Some are for housing, while others are for different uses or have already been built.



...AND WHY DOES IT MATTER TO PEMBURY?

Two sites in and around Pembury are allocated for housing but have not yet been built:

- **PE2 – Land at Hubbles Farm**
Planning permission approved for 87 homes
- **PE3 – Land to the east near Bo Peep Corner**
Planning permission approved for 99 homes

Building has not yet started on either site, and there is currently no confirmed timetable.

Two further housing sites have not yet submitted planning applications:

- **PE1 – Land behind the Village Hall**
Approximately 80 homes
- **PE4 – Land at Downingbury Farm**
Planning application expected later in 2026 for approximately 60 homes

Other sites

- **PE5 – Oast Gardens**
Already built
- **PE6, PE7 and PE8**
Not allocated for housing

What happens next?

Developers are expected to submit planning applications for the remaining two housing sites (PE1 and PE4) in due course. When applications are submitted, residents will have the opportunity to comment to TWBC. Pembury Parish Council will share updates via social media and the website.

The role of the Parish Council

Pembury Parish Council will continue to:

- Monitor planning applications and policy changes
- Respond formally to consultations
- Represent local views on issues such as traffic, infrastructure, and village character

How can you get involved?

You can:

- Take part in public consultations run by Tunbridge Wells Borough Council
- Follow updates from Pembury Parish Council, which will share key information and consultation dates

Updates will be shared via the Parish Council's website and social media channels, so please keep an eye out for further information.

www.pemburyparishcouncil.gov.uk

We fit, fix and service boilers



APV
HEATING SERVICES

Specialising in:

- Boiler Installation
- Air Source Heat Pump Installations
- Boiler Servicing & Fault Finding
- CP 12 (Landlord) Certificates



07557 989895



01892 352216



info@apvheatingservices.com



www.apvheatingservices.com



LINT Accountants

14 Beagleswood Road Pembury
Tunbridge Wells TN2 4HX

T 01622 673815

M 07816 784088

casper@lintacs.co.uk

www.lintacs.co.uk

Registered Office Administration & Taxation Centre Ltd t/a

Lint Accountants, 14 Beagleswood Road, Pembury, Tunbridge Wells, Kent, TN2 4HX.

Registered in England No: 67182967. If you wish to check our status please visit www.checktrading.com or call 0303 1234 4444.

Residents in Pembury are being invited to play a key role in protecting one of Britain's most iconic birds, as the Green Pembury Working Group leads a new Swift Initiative in partnership with High Weald Swifts.

Swifts, known for their high-speed flight and distinctive summer calls, are in serious decline. UK numbers have dropped by 66% since 1995, placing them on the red list of conservation concern. Despite this, Pembury still supports a small but important colony. In summer 2025, swifts were regularly spotted above Pembury School, Church Road and The Grove: evidence that the village remains a valuable habitat.

Green Pembury is at the heart of efforts to protect and grow this local population. Working closely with High Weald Swifts, the group is focusing on one of the biggest threats facing the species: the loss of nesting spaces. Swifts traditionally nest in small gaps under roof tiles and eaves, but modern building methods and home improvements have removed many of these sites.

To tackle this, Green Pembury is encouraging the installation of specially designed swift nesting boxes on homes and buildings near existing colony areas. These boxes provide safe, long-term nesting spaces and are a simple but effective way to support the birds. The initiative also aims to expand the colony by increasing the number of suitable nesting locations across the village. Pembury Primary School is expected to join the effort by installing boxes following planned building works.

Residents are central to the success of the initiative. Green Pembury is inviting homeowners to host a swift box or even build and install one themselves. By

taking part, residents can make a direct and lasting contribution to reversing the decline of this remarkable species.

There are other simple ways to help. Swifts rely entirely on flying insects for food, eating up to 20,000 a day. Residents can support insect populations by planting native wildflowers such as birds-foot trefoil, knapweed, red clover, ox-eye daisy and yarrow, and by avoiding the use of pesticides. Even small changes in gardens can have a meaningful impact.

Green Pembury hopes the initiative will inspire a village-wide effort to safeguard swifts for future generations. Anyone interested in taking part can contact the group at PemburySwifts@outlook.com.

As Cheryl Mason of High Weald Swifts notes, the partnership offers a real opportunity for local people to help bring swifts back in greater numbers.

With community support, Pembury's skies can continue to be filled with these extraordinary summer visitors for years to come.



COVER STORY: PEDRO THE CAT...

Every school has its own special traditions, memorable moments, and beloved characters, but for staff and pupils of Pembury Primary it comes with four paws and a very distinctive purr. One day Pedro the cat simply wandered into the school grounds as if he had always belonged there, and from that moment on, he became part of the school community.

From the beginning, Pedro made it clear that he wasn't just visiting, he was home.



A Friend to Everyone

The school children adore him. The staff adore him. In truth, it's impossible for anyone not to! Pedro greets people with calm confidence, weaving himself into school life with a kind of gentle authority. Whether it's a busy morning drop-off or a quiet afternoon lesson, he is always somewhere nearby, observing the world with his bright, knowing eyes.

His presence brings a sense of warmth and comfort to those around him, and many children look forward to spotting him each day. For some, Pedro is a friend to talk to; for others, he's a little moment of joy in a busy school routine.

Classroom Connoisseur

One of Pedro's favourite activities is choosing his 'classroom of the day.' No one knows what motivates his choice: sunlight; mood; or perhaps just curiosity, but almost every teacher has, at some point, discovered Pedro curled up in a cosy corner of their room.

When Pedro settles down for a nap, the atmosphere changes instantly. The children take great pride in keeping the room quiet for him, tiptoeing around their work as if they're guarding something precious, which, in a way, they are. Pedro has become a gentle reminder of kindness, care, and consideration. They all know to not wake him and to not crowd him.



A Star of School Events

Pedro doesn't limit his involvement to everyday lessons. He has attended assembly, strolling in with the confidence of someone who knows he is more popular than the headteacher and even made an appearance at the Christmas fair. He loves to join the local evening classes too! Pedro brings joy wherever he goes.

It seems that Pedro knows exactly when the school needs a little extra magic.

More Than Just a Cat

What makes Pedro so special isn't just his soft fur or soothing purr. It's the way he brings people together. He offers comfort to children who need a moment of calm. He makes staff smile on hectic days. He adds personality and heart to the school in a way no one could have planned but everyone appreciates.

As a member of staff expressed it 'Pedro didn't just choose us once; he chooses us every day. And we're very glad he does.'



We are a small family run business based in East Sussex with 18 plus years of experience. We are passionate about providing a personal service where you are always in control.

For a free quotation and friendly advice please do not hesitate to contact us on the details below:

Mobile: 07912215199
 Telephone: 01323 833979
 Email: gildridgefencing@gmail.com
 Website: www.gildridgefencing.com



ABOUT US

We offer a range of services cross Sussex and Kent including Agricultural and Domestic Fencing, Decking, Gates, Digger 360 works (ground clearance, levelling and ditching etc) Tree Felling, Tree reductions and Hard Landscaping.

We can also re-design your garden to bring your ideas to reality with precision decking, pergolas, sheds,



ALL OUR WORK IS ISSUED WITH INSURANCE BACKED GUARANTEES

- ✓ Pitched Roofing
- ✓ Flat Roofing
- ✓ New Roof Installations
- ✓ Roof Repairs
- ✓ Chimney Work
- ✓ Re-pointing
- ✓ Lead Work & Welding
- ✓ Drone Roof Surveys
- ✓ UPVC Fascia, Soffit & Guttering
- ✓ Gutter Vacuuming
- ✓ Professional Roof Cleaning
- ✓ Velux Windows & Roof Lanterns

COOPER & SONS ROOFING
 & PROPERTY SERVICES LTD
 PROTECTION THAT PAYS FOR YEARS

01892 598001
07784 500611
info@cooperandsons.uk



Throughout May, we were pleased to support *No Mow May*, a national initiative encouraging communities to give nature a helping hand by allowing grass and wildflowers to grow freely during the spring growing season. This simple change in land management helps create space for biodiversity to recover and flourish at a time when wildlife is most active.

Across the village, several key green spaces were left unmown throughout the month, including The Coppice, Old Church, Lower Green Cemetery, and Coronation Gardens. These areas took on a noticeably different character, with longer grasses, developing seed heads, and emerging wildflowers transforming the usual neat appearance into a more natural, flowing landscape.

While the change in appearance can feel unfamiliar at first, the ecological benefits are significant. Allowing grass to grow provides essential habitat and food sources for pollinators such as bees, butterflies, and hoverflies. The increased availability of nectar-rich wildflowers supports these species during a critical period in their life cycles, helping to strengthen local ecosystems. Even small pockets of unmown land can act as vital stepping stones for wildlife, linking habitats across the village.

One of the most important examples of this approach is St Peter's Old Churchyard, which is already managed in a nature-focused way throughout much of the year. The Churchyard is designated as a Local Wildlife Site due to its exceptional biodiversity. Despite its modest size, it supports rare unimproved grassland, where a carefully balanced mix of long and short vegetation allows wildflowers, orchids, and fungi to thrive.

The site is also of national significance for its lichens and mosses. The historic tombs and stone walls provide unique microhabitats, supporting over 90 species of lichen and more than 30 species of moss. These organisms are highly sensitive to environmental change and are an important indicator of air quality and ecological continuity.

To protect this delicate habitat, St Peter's Old Churchyard is not mown until September. This longer management cycle ensures wildflowers are able to flower and set seed, while also supporting insects and fungi throughout the summer months.

In addition to supporting wildlife, *No Mow May* also contributes to improved soil health and helps reduce emissions associated with regular mowing. While the benefits may be gradual, they are meaningful and cumulative.

We hope residents enjoyed seeing these spaces evolve over the month. Initiatives like *No Mow May* demonstrate how small, thoughtful changes in land management can make a real difference, helping to create a greener, richer, and more wildlife-friendly village for everyone.



THE MILITARY ROAD RUN AND THE 1909 'GUARDS DASH'

Once again, this year's Military Road Run was a great success, bringing the community together in a wonderful display of village spirit. Participants enjoyed a warm and enthusiastic welcome along the route, with many commenting on the support from those watching. One said, "Great run through Pembury, nice to see so many people and have so many waving hands!" Another added, "Everyone outside waving showed the true spirit of the village," while others described it as "always the highlight of the Run - what a friendly and enthusiastic welcome!"

The event was well supported, with around 68 participants taking part on the day, and many more having entered. Once again, it raised significant funds for Combat Stress, with valuable support from the Pembury Explorer Scouts, who collected over £200. Thanks are also due to everyone who helped make the day such a success, including those who provided the static display in Camden Car Park, the Camden Arms and King William for refreshments, and photographers David Sellman and Tony Nicholls for capturing the occasion.



The Military Road Run commemorates the historic 'Guards Dash' of 17th March 1909. This remarkable event was organised to publicise the AA and demonstrate the potential of motoring. A battalion of soldiers was transported from London to Hastings and back, testing whether large-scale troop movements could be carried out by motor transport rather than rail.

Over 300 motor cars took part, carrying around 1,000 men and supplies. The departure caused great excitement, with two to three thousand people gathering at the Camden Hotel, on the Green, and along the High Street to witness the convoy set off.

The event is now remembered each year through the Military Road Run, which continues to celebrate both local involvement and an important moment in transport history.

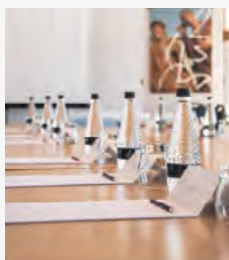
More information can be found in *Bygone Pembury Vol. 1*, available from Barnes Kingsnorth, and on the Pembury history website: www.pastpages.co.uk>pemburyhistory



Satellite Conference Room

FLEXIBLE, HOURLY RATE MEETING ROOM HIRE

£25 PER HOUR



Need a quiet, professional space to work or meet? Rent our small conference room by the hour! Perfect for remote workers, client meetings, or focused team sessions. Whether you need a productive environment for an hour or an afternoon, our flexible booking makes it easy. Conveniently located and affordably priced. Book now and make your work time count!

Your private working space includes:

WIFI | Stationary Essentials | Video Conferencing System | Unlimited Tea & Coffee

Afternoon Tea

Traditional Afternoon Tea £25pp
Add a glass of Prosecco at £7.50pp



Indulge in a delightful afternoon tea experience! Savour a selection of exquisite finger sandwiches, heavenly cakes, and freshly baked scones, all paired with our finest specialty teas. Perfect for a relaxing afternoon with friends or a charming solo escape. Join us for a taste of elegance and tradition, where every bite is a moment of bliss. Senior citizens enjoy 50% off on Sundays, subject to availability.

Celebration of Life Events

Mercure Tunbridge Wells is the ideal location to gather with friends and family to celebrate the life of a loved one.

Our compassionate team understand your needs at this difficult time and specialise making the celebration seamless in every way.



8 Tonbridge Road, Pembury, Tunbridge Wells, TN2 4QL
mercuretunbridgewells.co.uk | 01892 628 298
events@mercuretunbridgewells.co.uk



Hospice in the Weald is once again inviting the local community to take part in two much-loved fundraising events in 2026: the Moonlight Walk and the Open Gardens Season. Both offer wonderful opportunities to enjoy the local area while supporting vital hospice care for patients and families.

The Moonlight Walk returns on Saturday 27 June, starting from Sevenoaks Rugby Club at 6pm and finishing at midnight. Participants can choose from four, eight or thirteen mile routes, all taking in the beautiful surroundings of Knole Park. The evening begins with a lively warm-up to music, followed by a chance to set off together under the evening sky.

On return, walkers will be welcomed with a glass of fizz at the finish line, with food, tea and coffee also available to purchase. The event offers a special opportunity for reflection and remembrance for those walking in memory of a loved one, as well as a fun evening for friends and families to enjoy together. Well-behaved dogs are also welcome to join in.

The walk raises essential funds to support Hospice in the Weald in providing free care and support for people facing life-limiting illness and their loved ones. Entry fees and sponsorship all contribute to this important work.

Alongside this, the Open Gardens Season 2026 offers the chance to explore some of the most attractive and interesting



private gardens across West Kent and East Sussex. Running from 19 April to 8 September, the season features 28 gardens, each offering something unique.

Visitors can enjoy everything from the formal grounds at Tonbridge School, to the charming cottage garden at Little Walkhurst in Benenden, and the impressive three-acre gardens at Long Barn in the Weald. New for this year is Bailiff's House in Hever, showcasing a beautiful Arts and Crafts-style garden. The Tunbridge Wells in Bloom event also returns with nine gardens open to the public.

As well as enjoying the sights, sounds and scents of summer gardens, visitors can enjoy refreshments and pick up gardening inspiration along the way.

Hospice in the Weald extends sincere thanks to all garden owners, volunteers and supporters who make these events possible each year. Funds raised help provide essential care and support when it is needed most.

For full details or to book, visit hospiceintheweald.org.uk, email fundraising@hospiceintheweald.org.uk, or call 01892 820533.



JOIN US FOR PEMBURY'S COMMUNITY PICNIC

PICNIC IN THE PARK 2026

FREE ENTRY

**SATURDAY 4TH JULY
1PM - 5PM**

PEMBURY RECREATION GROUND

BAR

KIDS ACTIVITIES

FOOD

WITH MUSIC FROM MINT DJS



SPONSORED BY



Burtons Solicitors

BarnesKingsnorth



Summer is fast approaching and we are looking forward to the community coming together for Pembury's annual Picnic in the Park event.

Picnic in the Park takes place on Saturday 4 July at Pembury Recreation Ground, from 1pm until 5pm and entry is completely free.

For this year's Picnic in the Park we will be going back to basics with a relaxed and easy-going event, providing you with the soundtrack and the backdrop to your picnic, whilst you gather together your blankets, lunches and loved ones!

This year the music will be supplied by the award-winning Mint DJs, so come ready with your requests and help to shape the summer vibe.

For those who'd like to supplement or even upscale their picnics we have a variety of food and drinks offerings on-site, including ice creams, burgers and cakes, as well as a bar and Prosecco truck.

We encourage you to bring garden games to make the most of the afternoon, and alongside this we'll have some activities to keep little ones amused, including an eye-spy trail, facepainting and some fete-style favourites such as 'splat the rat'!

Events like Picnic in the Park are really important for building stronger communities, giving us the chance to get to know one another better, to enjoy the fresh air together and find new appreciation for the place that we live.

We look forward to picnicking with you soon.

At this year's Picnic in the Park we are delighted to be joined by:

- Mint DJs
- The Moody Mare Craft Beer Bar
- Prosecco Truck
- Toni Bell Ice Creams
- Sweetpea Facepainting
- Out to Lunch
- Pembury Community Cafe
- SERV Kent Blood Runners
- our featured charity



We would like to extend a special thanks to this year's sponsors:
LINT Accountants, Burtons Solicitors and Barnes Kingsnorth Estate Agents

Pembury Guiding district continues to grow, with both young members and our volunteer adult helpers. These volunteers are the lifeblood of our units and district. Here they share some of their experiences and what it gives to them personally:

Jay

I joined 1st Pembury Guides as a parent helper in September 1979; by September 1980 I was the Guide unit leader. My journey in Girlguiding has been extraordinary: full of incredible friendships, opportunities and adventures. I have memories of magical camps, travelling across Europe skiing, walking, cycling and narrow boating. I've explored underground caves and climbed mountains, as well as organising service projects for older sections in The Gambia, renovating a school, and Zimbabwe, working on a game reserve. Girlguiding really is an extended family, and I still enjoy my involvement with Rainbows, Brownies and Guides, 47 years later.



Karen

I have multiple sclerosis and Girlguiding has always supported me as a volunteer, without it ever being an issue. As a District helper, I support girls from Rainbows to Rangers when an extra pair of hands is needed. I'm not available every week but still see the girls grow and progress through their Guiding journey. I recently helped at our 100th anniversary Thinking Day celebration, with girls from all sections. It was busy but great fun, with

a memorable moment being 'the human knot,' where everyone links hands to form a knot and then works together to undo it without letting go!



Lucy

I volunteered at Pembury Guides after spotting an advert in the PVN and have thoroughly enjoyed the past few months helping at meetings. It's been wonderful to see the Guides have fun, try new activities and encourage one another and I've learnt new skills too. I was a Brownie and Guide when I was younger, and enjoy the nostalgia while seeing how much girls still gain from Guiding today. Guiding has moved with the times and now includes badges such as craftivism. If you are thinking of volunteering, I would say go for it come along, meet our young people and leaders, try new things and be inspired by what Girlguiding offers.

If you are interested in becoming a helper with us, please register your interest via: www.girlguiding.org.uk/get-involved/become-a-volunteer/register-to-volunteer



PEMBURY GARDENERS: SPRING SHOW SUCCESS

Our Spring show took place on 28 March on a glorious day when visitors were treated to a feast of spring flowers and other floral arrangements.

Last summer's drought followed by waterlogged gardens in late winter and early spring left experienced flower exhibitors somewhat concerned over whether their stock would survive well enough to enable show worthy blooms, but happily these fears did not materialise!

The judges had some fantastic entries to choose from: Ann Purton won The Doris Dawn Cup for the floral art, Derek Parks took the Daffodil Society's Bronze medal for the Best Daffodil, and Claire Knoop was awarded the Kent Federations Horticultural Certificate for the best item in Cookery.

This year's Summer Show will be on 20 June held again in the Village Hall, doors open at 2pm, so do come along and chat over where you think the Judges "got it wrong" and indulge in a cup of tea and cake! Even better - why not try your hand at exhibiting? No experience is needed to take part, your flowers or pot plants at home could even surpass the ones that win!

You don't have to be a Society Member to enter. If you would like a schedule please contact Derek Parks on (01892 822804) who would be happy to deliver one and answer any questions you may have.

Derek Parks

Show Co-ordinator



COMMUNITY CAFE: UPDATES



As the weather perks up, we look forward to seeing everyone out and about and hopefully many will pop into the Community Coffee Shop at the Pavilion on Monday mornings.

Our Easter event was held on 13 April during which we were able to start our year of donations to charities by having a talk from Trevor Sayers from SERV Kent Bloodrunners - our main charity this year. He and 3 other SERV Kent volunteers spent all morning with us, and it was extremely enlightening to hear about the wonderful work they all do to make sure blood gets to where it is needed in emergency situations.

We also held a raffle during the morning which is always a crowd pleaser, and we are extremely grateful to all the local businesses that help so much by donating prizes for our events.

By the end of the morning, with raffle tickets and sale of cakes and drinks we had raised nearly £500 and together with a further £500 from our kitty, we have been able to give the charity £1000.



Meanwhile, our local Brownies and Cubs have been beavering away designing new posters to advertise our coffee shop. The finished designs will be arriving any day now, and look forward to awarding a prize for the chosen 2 designers.

Keep a watchful eye out - you could be one of the first to see these new posters, especially if you come to enjoy our lovely cakes, coffee and a natter every Monday morning.

Go on. You know you want to...



I don't know about you, but I find it surreal to remember the Covid pandemic, those days when we were all locked down because of a global virus we couldn't see. These days thankfully those lockdowns are a distant memory, but there is an epidemic that still affects so many in the UK: one of loneliness. Lots of factors can contribute, including families being scattered, ill health, comparing ourselves to others on social media and so on...



Here at Pembury Baptist Church one of the ways we try to combat loneliness is through our weekly day centre for seniors. It's called Tuesday Club and we meet on - you guessed it - Tuesdays...

We gather at 10am during term-time in our church hall. There is tea, coffee and biscuits and the opportunity to chat over quizzes, crosswords and games. If you like mindfulness colouring that is always available too.



Just before midday we have a brief 'thought for the day' and then a two-course lunch. All of this is for a voluntary contribution of £5 which helps cover the food costs. We finish around 12.30pm and it is all made possible by a wonderful team of volunteers. Here are a few of the things people said to me about Tuesday Club just this morning:

'It's a great place to make new friends',
Fran

'It's very good if you live on your own',
Shirley

'All the helpers are wonderful', John

'We all miss it when it's not on', Janet

If you are over 60 and would like to give it a try you'd be more than welcome. You can give us a call at the office on 01892 825 590 first, or just come along.

Pastor Dan Foster
Pembury Baptist Church





Burtons Solicitors

Your Local
Legal Experts

Trusted family law team

Our family team understands that the breakdown of a relationship is one of the most difficult times for families, and we are here to support you.

Helping you navigate:

- Divorce
- Separation
- Financial Settlements
- Child Arrangements Orders
- Cohabitation Agreements
- Separation Agreements
- Occupation Orders
- Non-Molestation Orders
- Pre-Nuptial Agreements
- Post-Nuptial Agreements



"Vicky and Emily were fantastic. Getting divorced can be stressful and emotional, but the support I received was great. I could contact them about the smallest detail and they explained it very clearly."



"Vicky & Emily have been fantastic at Burton's Solicitor's. A pleasure to work with."



Pembury: 01892575519

family@burtons-solicitors.com | www.burtons-solicitors.com

Tyled House, 23A High St, Pembury, Tunbridge Wells, Kent, TN2 4PH - Registered Office

Now that Spring has arrived with lighter evenings, in the Scouting world we look forward to spending more time getting outdoors. We are particularly looking forward to our St George's Day celebration, when we combine with all other Scout Groups in the Tunbridge Wells District for an action-packed day of activities at our District Campsite at Adamswell, with transport provided by the Spa Valley Railway.

Recently, we have been fortunate enough to recruit some new leaders to our Group; welcome on board to you all and as always, my enormous thanks to all Pembury Scouting Leaders, who give up their time freely to provide 'skills for life' for our young people.

If you wish to become involved in our fantastic Scout Group please contact sturgeoncubspembury@gmail.com.

Richard 'Alf' Alfieri, Pembury Scout Group Lead Volunteer



The Beavers enjoyed a visit from the owl and raptor centre.



The Cubs had a fantastic time at Laser Quest on Knights Park.



The Scouts have been busy on their craft badge, making welly removers.



The Explorers enjoyed a chilled evening making 's'mores' around the camp fire.

SA LANDSCAPING LTD

www.salandscaping.co.uk
01732 671146
sales@salandscaping.co.uk



DO YOU NEED
Garden
Maintenance ?

All aspects of Garden Maintenance are catered for by our professional team including Lawn Care.

You can visit our Website and select the Garden Maintenance page to find out more or you can just give us a call on



01732 671146



www.salandscaping.co.uk

Scan with the camera on your phone to visit our website.



Over 40 five star reviews

With Options starting from just £300 per month, you are sure to find the right one for you.

PEMBURY BOWLS CLUB ROUNDUP



Our long-awaited season began mid-April and on the first weekend we had our Open Day. It was a beautiful day and we welcomed many people of all ages. Everyone seemed to enjoy trying their hand at bowling as much as the tea and fabulous variety of cakes. There were lots of youngsters and we are hoping to see some of them at our Junior Sessions on Saturday mornings.

Our competitions are now well underway with new members settling happily into our group, taking part in our roll ups and competitions.

Over the winter months, for the first time, we hosted socials at the clubhouse on Saturday afternoons. We had drinks and cakes and played a variety of games such as darts, shove halfpenny, cards, also trying out some new ones. The afternoons were a great success and all helped to keep our bowling spirits high!

We are looking forward to another successful year for the club and if you fancy a try out, pop up and see us on a Wednesday evening between 6pm and 8pm or a Friday afternoon between 2pm and 4pm.

Sue Jones

Honorary Secretary
Pembury Bowls Club





The season is now underway and we are looking forward to another cricketing summer at Pembury CC. Plenty of work has been carried out over the off season to leave us well set for the summer ahead.

Once again we have two senior sides entered into the Kent County Village League and have a full fixture list of friendlies on a Sunday plus a calendar of social events.

We continue to have a thriving junior section with regular coaching and hardball teams at u11, u13 & u15 levels, plus 2026 also sees the return of the ECB Initiative 'All Stars' to PCC. 'All Stars' provides a fantastic experience for all children aged 5-9 years old. The programme is designed to introduce children to the sport, learning fundamental movement skills, including catching, throwing and batting. Sessions run on Saturday mornings. For further details please visit <http://pembury.play-cricket.com>

We are always looking for new players and members of all ages and abilities, so if you are interested please get in touch via our website or socials, or pop up and watch us in action over a sunny weekend!

Richard Dawes

Club Captain, Pembury CC

PLAY CRICKET THIS SUMMER

U13 & U15 PLAYERS WANTED
EXPERIENCED AND NEW PLAYERS WELCOME

HARD BALL CRICKET | **COMPETITIVE LEAGUE MATCHES** | **REGULAR TRAINING & SUNDAY GAMES** | **ALL EQUIPMENT PROVIDED**

TRAINING & MATCHES

U15s WEDNESDAY EVENINGS | **U13s** FRIDAY EVENINGS | **MATCHES** SUNDAY MORNINGS

pemburycc@gmail.com | OR COME DOWN TO TRAINING

GET INVOLVED WITH PEMBURY PLAYERS



As the evenings begin to draw in and the nights become longer, many people find themselves wondering how best to spend their time at home.

A simple answer is to join a local club and make new friends.

Although we are known as a drama group, Pembury Players offers far more than acting alone. There are sets to paint, props to create or source, and costumes to find or make. In addition, there is a bar to run, front-of-house duties to cover, and a wide variety of other tasks that all contribute to our productions.

In September, we will begin preparations for our January pantomime, and we would warmly welcome new members to help bring the show to life. Whether you have experience in theatre or simply want to get involved in a friendly and creative group, there is a place for you.

We meet on Thursdays at 8pm in the Village Hall, and on occasion the evening may conclude with a visit to a local hostelry. The first meeting of the new season will be on Thursday 3 September.

We look forward to welcoming you.



WESTWOOD BUILDERS

26 Westway, Pembury, Kent. TN2 4EX

Office 01892 325378 Mobile 07710 895598 E-mail; paulbuild444@gmail.com



Friendly Local Professional Builder, with over thirty years' experience.

Kitchens, Bathrooms, Loft Conversions, Extensions, Design Service Available.

Call for a no obligation quote.

Call for a free no obligation estimate



R.W.R. Vehicle Body Repairs

30 Years experience with a personal professional and prompt
service at an affordable price

Trade Prices 07842122768

Ever wondered what happens to unrecyclable waste from our green bins? The U3A Climate Change Group visited the Allington Energy from Waste (EfW) plant to find out. This is where up to half a million tonnes of waste is burnt each year to generate electrical energy.

On arrival, we were given an introduction to how the plant operates, then issued with protective helmets, high-vis jackets and safety goggles for our tour. Our first stop was the weighbridge, where lorries are weighed on arrival and departure so the exact amount of waste processed can be calculated and charged accordingly.

Next was the tipping hall, where waste is unloaded, piled up and fed into a shredder. This area was rather smelly, so we were glad to move on to the control room.

From here, operators monitor a deep bunker of shredded waste and use joystick-controlled grabbers to move it into furnaces: rather like a rather dirty version of a seaside teddy grabber machine!

Energy from the burning waste heats water, producing steam that powers a turbine generating electricity for around 60,000 homes. Plans are in place to supply recovered heat directly to homes, a hospital and a primary school. The ash produced is also reused as aggregate in road building and construction.

Flue gases are carefully cleaned through rigorous physical and chemical processes to meet Environment Agency standards, and there are plans to capture carbon dioxide emissions. Thanks to its location near the M20, the air released is considered cleaner than the surrounding environment! In fact, peregrine falcons have even nested on the chimney and are successfully raising chicks.

The EfW plant has operated continuously since 2008 and actively supports the local community through education, charity involvement, school careers events, and guided tours such as ours. We very much enjoyed the visit and had plenty to discuss over lunch on the way home.



OUT & ABOUT CLUB: EXCITING TRIPS AHEAD!

The Out & About Club is a friendly community initiative organised and supported by St Peter's Church. It offers local residents the opportunity to enjoy affordable organised day trips, particularly for those who may find it difficult to arrange outings independently or who would simply enjoy visiting places in good company.

We are pleased to announce some fantastic outings for 2026, offering a wonderful mix of culture, entertainment, and seasonal celebration. We hope you will be able to join us and enjoy some memorable days out with friends old and new.

On Saturday 27 June 2026, we head to the spectacular London Tattoo, a vibrant display of music, marching and performance, with tickets costing £52 per person.

On Thursday 17th December 2026 we will round off the year in style with a Christmas Variety Show and cream tea at the Criterion Theatre on the Isle of Sheppey, at a cost of £50.



We are aware that rising coach and venue costs can make outings more expensive. For this reason, we have scheduled just three carefully chosen trips this year, each designed to provide enjoyable and worthwhile experiences.

The Out & About Club is open to everyone, with a particular focus on supporting those who may have limited opportunities to travel, such as people with mobility difficulties, no access to transport, or other needs. There is no membership fee, and anyone is welcome to request details and book a place.

In the event of oversubscription, priority is given to those most in need of this service, particularly Pembury residents and those who would otherwise have fewer opportunities to get out and about.

All trips are organised on a non-profit-making basis, with a risk assessment carried out for each outing. Full details are provided in advance so members can decide whether the trip is suitable for their mobility and comfort.

If you have mobility needs and require a seat towards the front of the coach, please let us know when booking. We may also be able to offer limited support for a carer to accompany a disabled passenger free of charge, please enquire for details.

To receive booking forms and further information, please contact Sue Giles on 01892 823318.

We are a friendly group and welcome new members and visitors. We meet on the first Friday of each month from 7.45pm at the Village Hall. As well as a talk or activity there is usually a competition and plenty of time for chatting over tea or coffee and cake.

The highlight of the coming months is our cake sale, so do come and see us on the Village Green on 6 June! There will be the usual variety of homemade delicious cakes, biscuits and quiches. We will also be selling tickets for the Fashion Show that we are holding on 26 September. Tickets are just £7 each and Colours, the company that provides the clothing (and models!), will be selling high street brands at up to 70% off.



Across the next months we also have talks about 'Inheritance Tax and Planning', 'The Value of Trees', and 'Shoes: Highs and Lows'. Later in the year we are hoping for good weather for our Owl Walk at Bore Place, postponed from last because of a storm.

If you are interested to find out more about what WI has to offer please come and visit us. You can attend one or two meetings without joining the WI to get a feel for our meetings and to decide whether it is for you. For more information contact pewisecretary@gmail.com.

Viv Walton, Secretary



Based in Pembury on Cornford Lane, Aspens is a welcoming community hub supporting autistic people, those with learning disabilities, and their families, across the South East. Summer is the perfect time to explore our beautiful site, enjoy a family day out and discover the many ways you can get involved.

Our Pembury site is open to the public and offers a relaxed, family-friendly space to enjoy the sunshine. Visitors can meet our friendly farm animals, wander the buggy-friendly woodland walk, let little ones explore the playground and take in stunning countryside views.

The Bluebell Café is a highlight for many, serving drinks, cakes and light bites. It now also offers bespoke event catering using fresh, local produce - ideal for summer celebrations. We also have rooms available to hire, making Aspens a perfect venue for gatherings, with access to our meadow, woodland walk, farm and Café to make your event extra special.

There are plenty of ways to support Aspens this summer:

- Visit the Café and enjoy our holiday BBQs and children's activities.
- Declutter and donate quality items at our Pembury donations centre.
- Shop in our Paddock Wood, Crowborough and Bexhill stores.
- Volunteer with our animals, gardens, shops or Café.
- Adopt an Animal and receive an adoption pack with a certificate and information booklet - an ideal summer gift for children or animal lovers.

Find out more at aspens.org.uk and help us continue supporting local families this summer.



VILLAGE ORGANISATIONS

360 DANCE	Sadie Van Der Spuy. Tel: 07734 053509. www.360dance.co.uk
AGE UK	Mrs Sandra Springett. Tel: 522591
ASPENS (FORMERLY PEPENBURY)	CEO – Robert Shanahan. Tel: 822168
CATHOLIC CHURCH	Fr. Ed Tomlinson. Tel: 825009
CONSERVATIVE PARTY	Sue Nuttall. Tel: 822776. Email: sue_nuttall@tiscali.co.uk
FRIENDS OF PEMBURY PARISH CHURCH	Chairman: Mrs S. Clarke, Little Stanton, Romford Road. Tel: 823932
GUIDES, BROWNIES AND RAINBOWS	Amanda Baker. pemburydistrict@gmail.com Tel: 07812 562814
HOSPICE IN THE WEALD	Maidstone Road. Tel: 820500
INDEPENDENTS FOR TUNBRIDGE WELLS	David Hayward. Tel: 01892 808000
JUNIOR DARTS	Dan Littlechild. Tel: 07947 084266
KENT COLLEGE	Head: Miss K.Handford. Tel: 822006
KENT COLLEGE PREP SCHOOL & NURSERY	Headteacher: Mrs S Hall. Tel: 820204
LIBERAL DEMOCRATIC PARTY	David Mills. Tel: 825577
LITTLE RASCALS	c/o PBC Office. Tel: 825590
MULTIPLE SCLEROSIS SOCIETY	TW District. Tel: 0845 6037882
NEIGHBOURHOOD WATCH	Janet Ditchett. Tel: 822586
OUT AND ABOUT CLUB	Sue Giles. Tel: 823318
PATIENTS PARTICIPATION GROUP	www.waterfieldhousepractice.nhs.uk/about-the-ppg
PEMBURY ATHLETIC (YOUTH) FOOTBALL	www.pemburyyouthfc.co.uk
PEMBURY BAPTIST CHURCH	Church Office. Tel: 825590
PEMBURY BOWLS CLUB	Sue Jones. susanejones@ymail.com Tel: 07734 294855
PEMBURY BRIDGE CLUB	Matthew Rosenz. Tel: 07798 657233
PEMBURY CHILDMINDER'S CO-ORDINATOR	Sam Knight. Tel: 07793066471 mrssam.knight@btinternet.com
PEMBURY CRICKET CLUB	Chairman: Andy Weaver, 51 Heskett Park Tel: 824362
PEMBURY DAY CENTRE	c/o PBC Office. Tel: 825590
PEMBURY FITNESS	www.pemburyfitness.co.uk . Tel: 07876 787869
PEMBURY FOOTBALL CLUB	Saturday Secretary: Michael Brown 327480 Sunday Secretary: Phil Craxton 823928 Chairman: Andrew Rice-Tucker 823195
PEMBURY GARDENERS' SOCIETY	Ann Purton. Tel: 824223
PEMBURY PAVILION BOOKINGS	Gillian Mayrick. Tel: 824852. Email: gillianmayrick@aol.com
PEMBURY PLAYERS	Maggie Weaver, Chair of Pembury Players. Tel: 824362
PEMBURY SCHOOL	School Office. Tel: 822259
PEMBURY SCHOOL ASSOCIATION	Chair: Caroline Hurmson. email: psa@pembury.kent.sch.uk
PEMBURY SCHOOL HOUSE NURSERY	Mrs Kelly Marsh - Manager of Pembury School House Nursery. Tel: 825580
PEMBURY SOCIETY	Information www.pemburysociety.org
PEMBURY TAI CHI	Peter Histed. Tel: 07900 952103
PEMBURY U3A	Annie Partridge. Email: membership@pemburyu3a.org
PEMBURY UPPER AND OLD CHURCH	Vicar: Rev. Richard Worssam. Tel: 459894
PEMBURY WALKING GROUP	Martin Bolt. Tel: 07769707061
ROYAL NATIONAL LIFEBOAT INSTITUTION	Peter Chartres. Tel: 823759
SCOUTS, CUBS AND BEAVERS	Richard Alfieri. Email: sturgeoncubspembury@gmail.com
ST. ANSELM'S CATHOLIC CHURCH	825009
ST. ANSELM HALL ENQUIRIES	Trudy Donachie. Tel: 07748771779. Email: trudy.donachie@sky.com
ST. PETER'S MOTHERS' UNION	Secretary: Tina Walters. Tel: 822545 (after 4pm)
TOWN & COUNTRY (High Weald Housing)	Tel: 0845 8731 321
TREE WARDEN	Hugh Boorman Tel: 823068 and Martin Barrett Tel: 07403119207
TUNBRIDGE WELLS ACCESS GROUP	Michael Coggles. Tel: 822705
TUNBRIDGE WELLS & DISTRICT VICTIM SUPPORT SCHEME.	Tel: 513969
VILLAGE HALL	Manager (bookings): Tel: 07983 228181
WATERFIELD HOUSE SURGERY	825488 www.waterfieldhousepractice.nhs.uk
WOMEN'S INSTITUTE	Secretary: Mrs Viv Walton Tel: 07860 361252 Email: pewisecretary@gmail.com Web: pemburyeveningwi.wordpress.com

PEMBURY PARISH COUNCIL COMMITTEES AND MEMBERSHIPS

Full Council	
Cllr Nigel Stratton – Chair Cllr Lester Young – Vice Chair Cllr Chris Banwell Cllr Astra Birch Cllr Aaron Brand Cllr Patrick Gillan Cllr Graham Hall	Cllr Brian Hemsley Cllr Lisa Maddison-Brown Cllr Paul Simmons Cllr Christine Snow Cllr Maggie Weaver VACANCY x 1

Finance & HR Committee
Cllr Astra Birch – Chair Cllr Nigel Stratton – Vice-Chair Cllr Chris Banwell Cllr Paul Simmons VACANCY x2

Communications Committee
Cllr Brian Hemsley - Chair Cllr Patrick Gillan Cllr Nigel Stratton Cllr Maggie Weaver VACANCY x2

Open Spaces Committee
Cllr Christine Snow– Chair Cllr Lisa Maddison-Brown – Vice-Chair Cllr Maggie Weaver VACANCY x3

Green Pembury Working Group
Cllr Lester Young - Chair Cllr Nigel Stratton Mark Arnold Martin Barrett Paul Mason Lawrence Matthews Tracey Perrett

Events Committee
Cllr Astra Birch - Chair Cllr Nigel Stratton – Vice Chair Cllr Chris Banwell Cllr Patrick Gillan Cllr Lisa Maddison-Brown Cllr Christine Snow Cllr Maggie Weaver

Strategic Working Group
Cllr Astra Birch Cllr Brian Hemsley Cllr Christine Snow Cllr Nigel Stratton Cllr Lester Young

Neighbourhood Plan Working Group
Cllr Nigel Stratton – Chair Cllr Graham Hall

Planning & Highways Committee
Cllr Lester Young – Chair Cllr Graham Hall – Vice Chair Cllr Aaron Brand Cllr Brian Hemsley Cllr Lisa Maddison-Brown VACANCY x1

Appointments to Outside Bodies from January 2026	
KALC Area Committee Cllr Nigel Stratton	Pavilion Management Committee Cllr Graham Hall Cllr Christine Snow Cllr Nigel Stratton
KALC Annual Meeting Cllr Nigel Stratton	Save Pembury Cllr Christine Snow
Charles Amherst Alms-houses Cllr Nigel Stratton Cllr Maggie Weaver	
Village Hall Management Committee Cllr Lisa Maddison-Brown Cllr Maggie Weaver	

YOUR COUNCILLORS



Cllr Chris Banwell
chris.Banwell@pemburyparishcouncil.gov.uk



Cllr Lisa Maddison Brown
lisa.maddison-brown
@pemburyparishcouncil.gov.uk



Cllr Astra Birch
astra.birch@pemburyparishcouncil.gov.uk



Cllr Paul Simmons
paul.simmons@pemburyparishcouncil.gov.uk



Cllr Aaron Brand
aaron.brand@pemburyparishcouncil.gov.uk



Cllr Christine Snow
christine.snow@pemburyparishcouncil.gov.uk



Cllr Patrick Gillan
patrick.gillan@pemburyparishcouncil.gov.uk



Cllr Nigel Stratton MBE
nigel.stratton@pemburyparishcouncil.gov.uk



Cllr Graham Hall
graham.hall@pemburyparishcouncil.gov.uk



Cllr Maggie Weaver
maggie.weaver@pemburyparishcouncil.gov.uk



Cllr Brian Hemsley
brian.hemsley@pemburyparishcouncil.gov.uk



Cllr Lester Young
lester.young@pemburyparishcouncil.gov.uk

BOROUGH COUNCIL



Cllr David Hayward
3 Stanam Road,
TN2 4LD
Tel: 01892 808000



Cllr Astra Birch
34 Elmhurst Avenue
Pembury,
TN2 4DA



Cllr Hugh Patterson
60 Sychem Place
Five Oak Green,
TN12 6TS
Tel: 01892 837201

COUNTY COUNCIL



Cllr Colin Sefton
Colin.Sefton@kent.gov.uk

Clerk to Pembury Parish Council
Helen Munro
c/o Parish Council Offices, Lower Green
Recreation Ground, Lower Green Road
Pembury, TN2 4DZ Tel: 823193
Email: clerk@pemburyparishcouncil.gov.uk



AJ SERVICES

ROOFING & PAINTING

**New Roofs • Flat Roofs • Rubberised Sealant
Roof Repairs • Ridge Tiles • Chimneys Rebuilt
Repointing • Fascias & Soffits • Guttering
Downpipes • Dry Verge Systems
Interior & Exterior Painting**



PEMBURY

Home: 01892 231 777

Mobile: 07884 298 951

www.ajservicesuk.co.uk | ajservices3@outlook.com